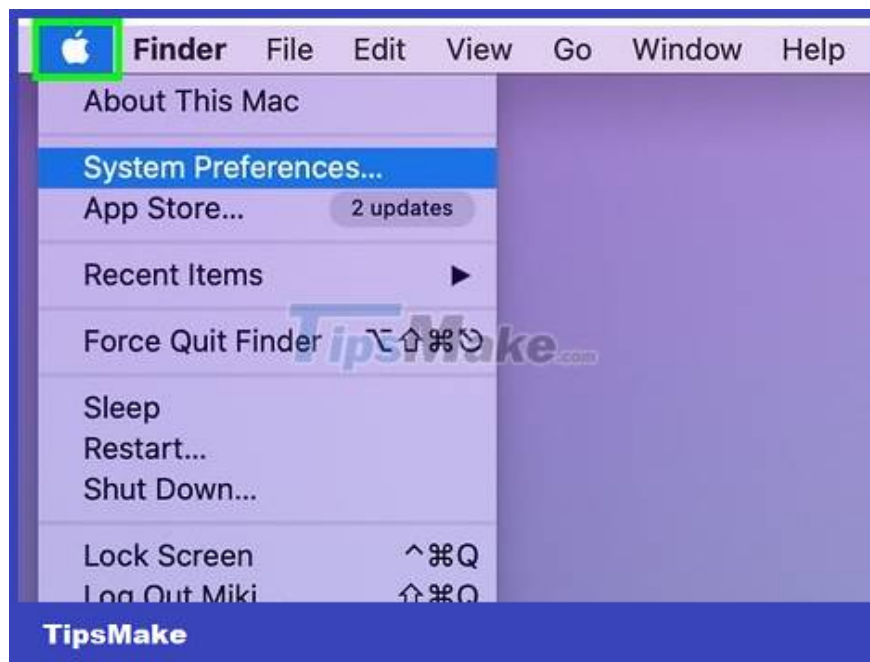


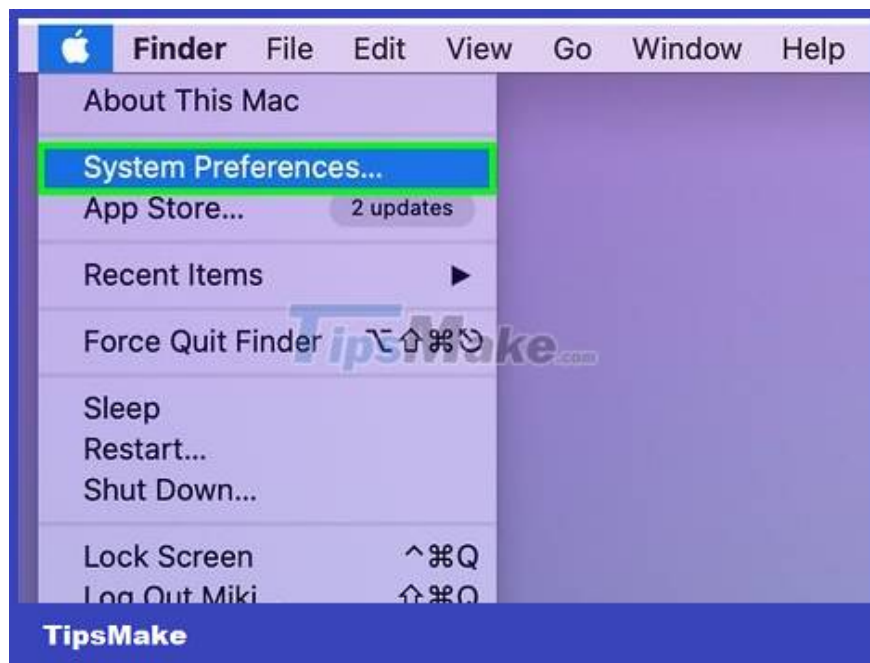
How to Determine the IP Address on a Mac

When a Mac operating system computer connects to a network, it is assigned an address called an IP address (Internet Protocol address). An IP address has four character ranges separated by spaces, each with a maximum of three characters.

Determine the internal IP address (on OS X 10.5 and later)



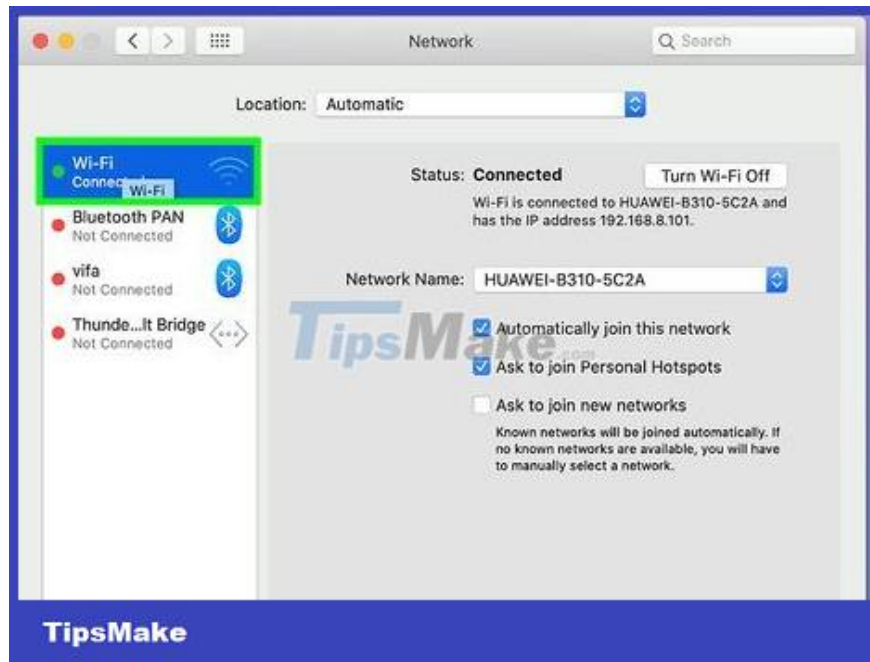
Click the Apple icon in the upper-left corner of the screen.



Scroll down, select System Preferences.



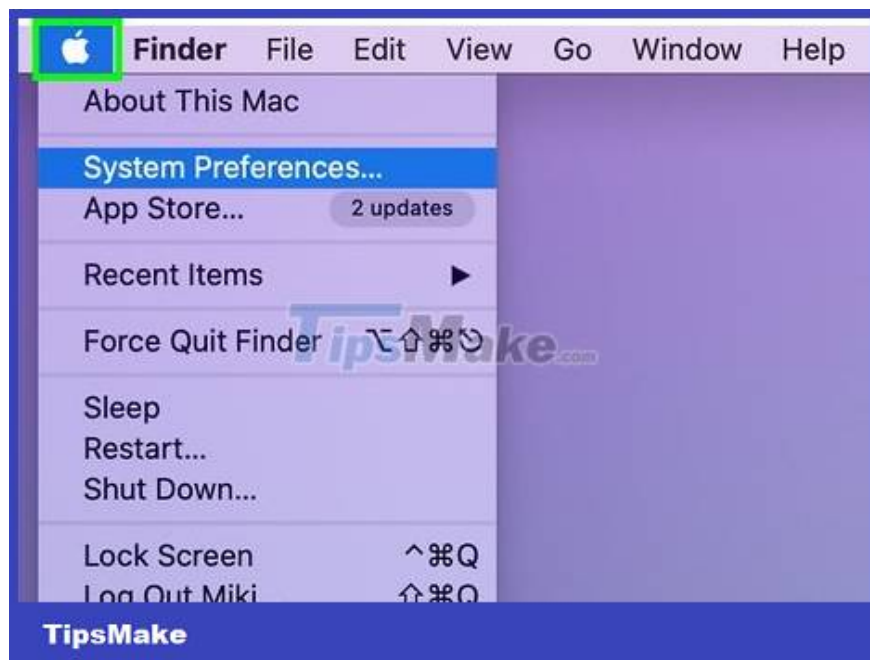
Click the Network item on the third line.



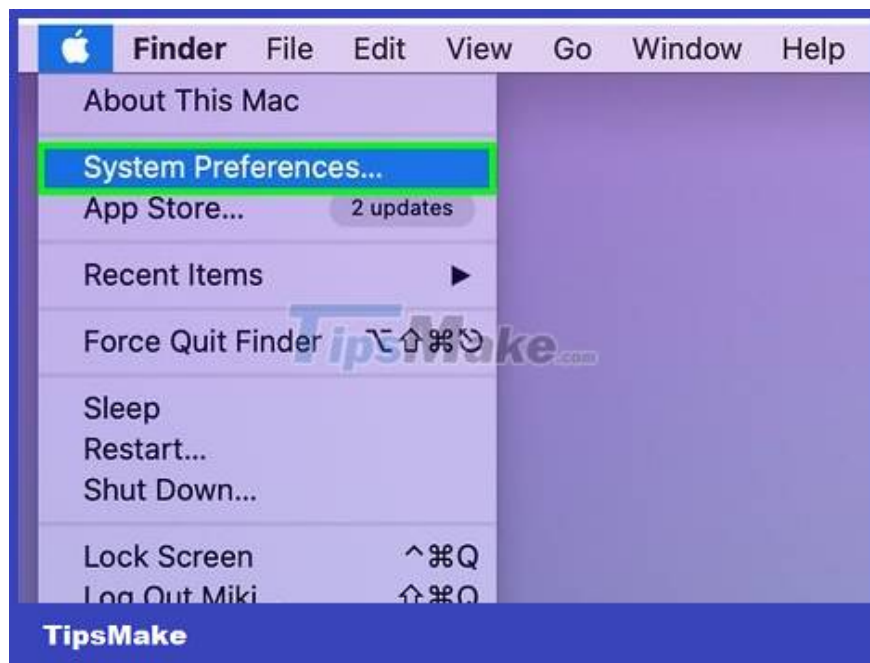
Choose your connection method. Usually, the computer will be connected to the network via AirPort (wireless network) or Ethernet (wired network). Connected status will appear next to the network connection you are using. You should see the IP address listed in a smaller font size, just below the Status status.

The active connection method is usually set by default.

Determine the internal IP address (on OS X 10.4)



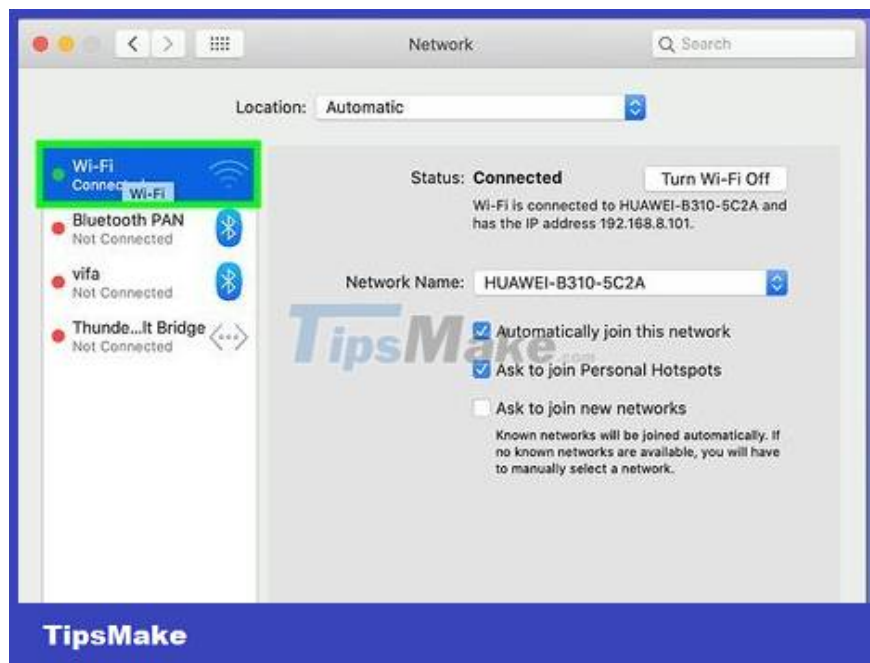
Click the Apple icon in the upper left corner of the screen.



Scroll down, select System Preferences .



Click on the Network item located on the third line.

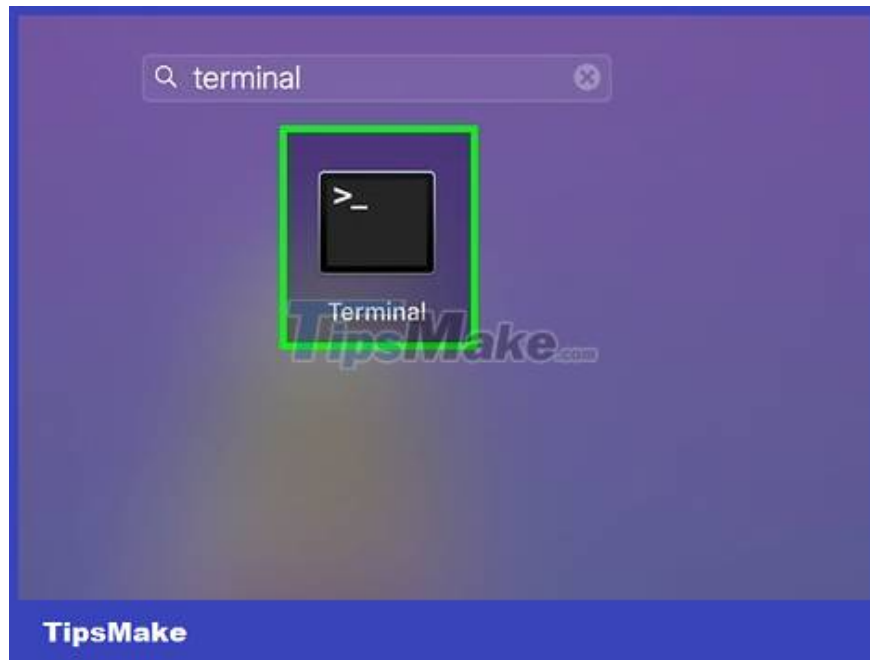


Select your connected network. We can select the network we want to see the IP address from from the Show drop-down menu. If you use a wired connection, select Built-In Ethernet. If you are using a wireless connection, select AirPort.

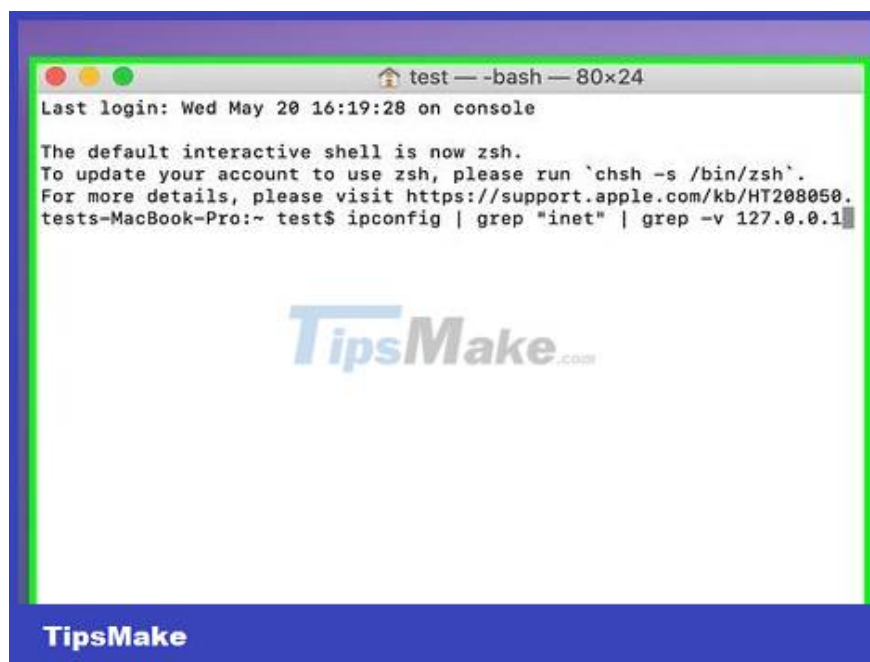


Click the TCP/IP (internet protocol suite) tab. Your IP address will show up in the setup window.

Find the internal IP address using Terminal



Access the Terminal tool. You can find it in the Utilities section of the Application folder.



Use the 'ifconfig' command. The normal 'ifconfig' command will throw out a lot of unnecessary data and cause a bit of confusion for the user. The following command line will show your internal IP address, and remove most of the unnecessary information:

```
ifconfig | grep "inet" | grep -v 127.0.0.1
```

This command will remove entry 127.0.0.1, the data will always appear no matter what kind of computer you use. This is a type of repeated response that you can ignore if you are only interested in the IP address.

```
test — -bash — 80x24
Last login: Wed May 20 16:19:28 on console

The default interactive shell is now zsh.
To update your account to use zsh, please run `chsh -s /bin/zsh`.
For more details, please visit https://support.apple.com/kb/HT2088050.
tests-MacBook-Pro:~ test$ ipconfig | grep "inet" | grep -v 127.0.0.1
usage: ipconfig <command> <args>
where <command> is one of waitall, getifaddr, ifcount, getoption, getpacket,
v6packet, set, setverbose
tests-MacBook-Pro:~ test$ ipconfig | grep "inet" | grep -v 127.0.0.1
inet6 ::1 prefixlen 128
inet6 fe80::1%lo0 prefixlen 64 scopeid 0x1
inet6 fe80::86c:7934:8260:7baf%en0 prefixlen 64 secured scopeid 0x4
inet 192.168.8.101 netmask 0xfffff00 broadcast 192.168.8.255
inet 10.8.0.1 --> 10.8.0.2 netmask 0xffffffff
inet6 fe80::9039:8ff:fee0:3c74%awd10 prefixlen 64 scopeid 0xa
inet6 fe80::9039:8ff:fee0:3c74%llw0 prefixlen 64 scopeid 0xb
inet6 fe80::28ff:3424:37c8:de29%utun1 prefixlen 64 scopeid 0xc
inet6 fe80::1405:5380:6239:9cab%utun2 prefixlen 64 scopeid 0xd
inet6 fe80::e2ff:817e:4535:9220%utun3 prefixlen 64 scopeid 0xe
tests-MacBook-Pro:~ test$
```

TipsMake

Copy IP address. Your IP address will be displayed next to the 'inet' entry.

Find your external IP address



TipsMake

Go to your router (router) configuration page. Almost the entire router can be accessed through the web interface, where users can view and adjust settings. Open the web interface by typing the router's IP address into a web browser. Look through your router's reference to find the specific router address. The most common router addresses are:

192.168.1.1

192.168.0.1

192.168.2.1

Connected WLAN Clients

ID	IP Address	Host Name
Clients1: 2		
1	192.168.	tests-MBP
2	192.168.	DESKTOP-IC4SBP8

Blacklist

TipsMake

Open Router Status. The location of the external IP address for each router is different. Most of them show up in Router Status or WAN (Wide Area Network) Status.

Under Internet Port in Router Status, your IP address will be displayed in full. It consists of 4 sequences of characters, each with a maximum of 3 characters.

This is the IP address of the router you use. Any connection made from this router carries that IP address.

This IP address is assigned to you by your carrier. Most public IP addresses are 'dynamic', meaning it changes over time. This address can be hidden using a proxy server.



Search on Google with the keyword 'ip address' or 'ip address'. The first displayed result is your external/public IP address.

You finished reading the article "**How to Determine the IP Address on a Mac**" edited by the [TipsMake](#) team. We hope this article has provided you with many useful tech tips and tricks. You can search for similar articles on tips and guides. Thank you for reading and for following us regularly.