

How to Determine Processor Speed

This article describes the different locations where CPU speed is reported in Microsoft Windows XP. In Windows XP and in Windows Server 2003, CPU speed is reported in the following locations: === The System Properties tab === To view the...

Method 1 of 6:

The System Properties tab

To view the CPU speed on the System Properties tab,



1.

Right-click My Computer, and then click Properties.

2.



Click the **General** tab. CPU information is listed in the first or second line of the Computer area.

Method 2 of 6:

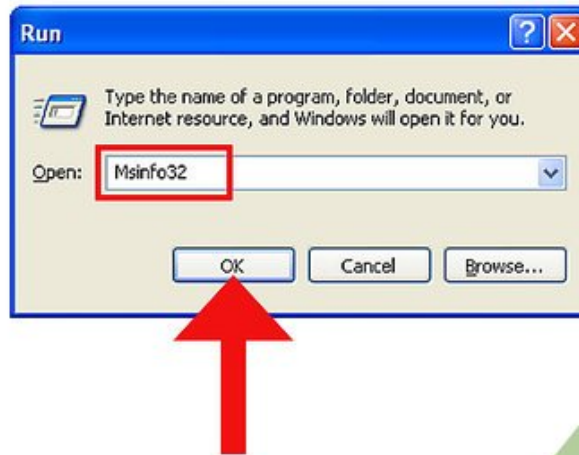
System Information utility

To use the System Information utility to see CPU speed,

1.

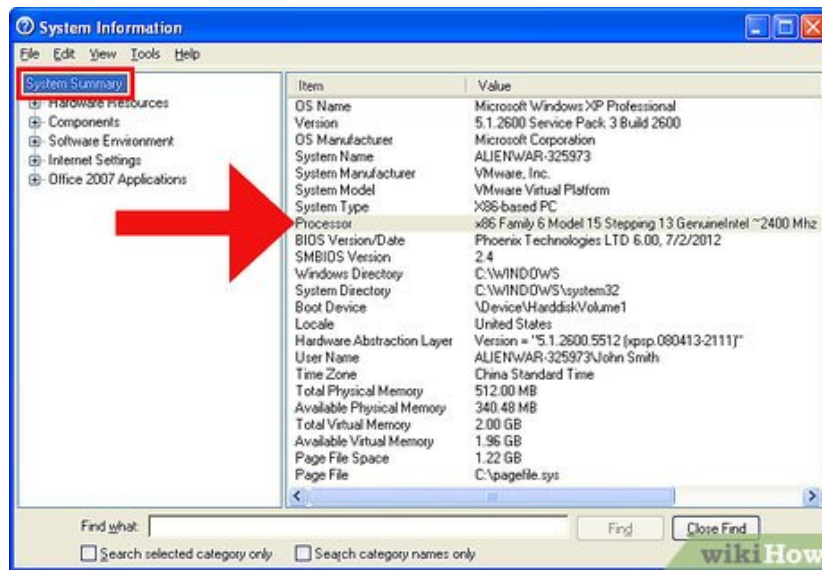


Click **Start**, click **Run**



2.

Type Msinfo32, and then click OK.



3.

Click System Summary. CPU speed is displayed in the Processor line.

Method 3 of 6:

Help and Support Center

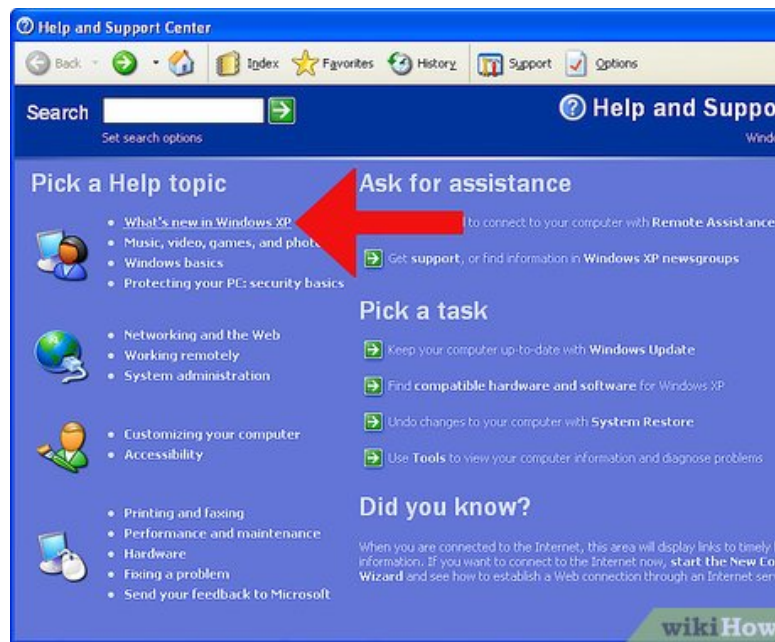
To use the Help and Support Center to see CPU speed, use one of the following methods:

1. View Detailed System Information

1. Click Start, and then click Help and Support.



2. Click What's new in Windows XP, click Tools, click Advanced System Information, and then click View Detailed System Information.

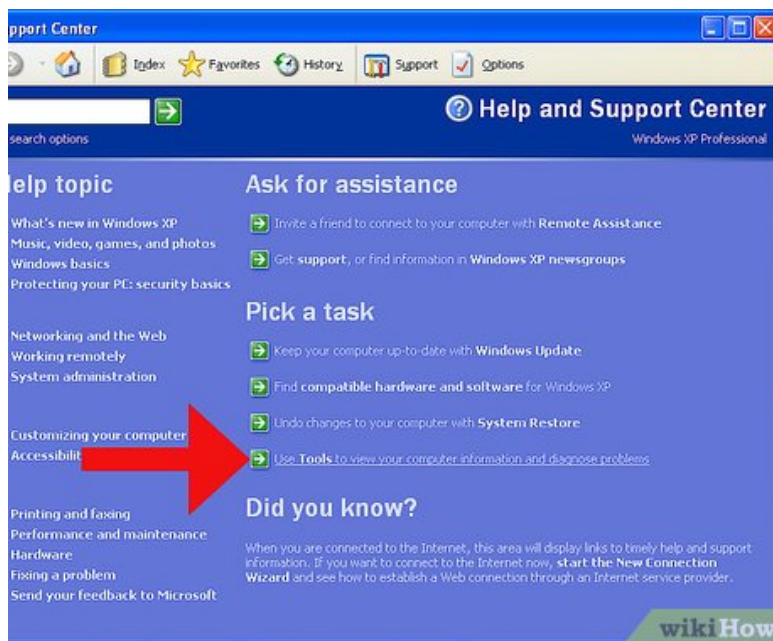


2. My Computer Information

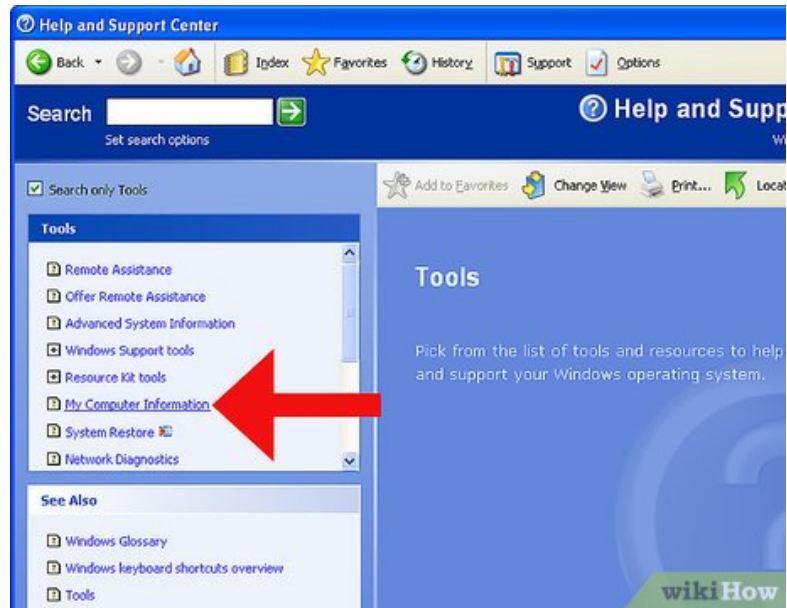
1. Click Start, and then click Help and Support.



2. Click Use Tools to view your computer information and diagnose problems.



3. In the Tools list, click My Computer Information, and then click Find information about the hardware installed on this computer.



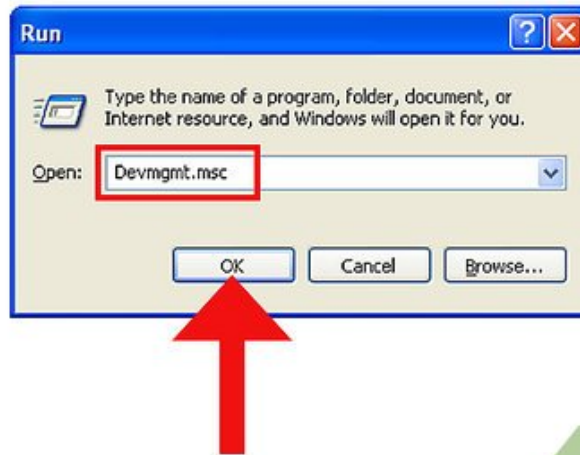
Method 4 of 6:

Device Manager

To use Device Manager to determine CPU speed,



Click Start, click Run.



2.

Type Devmgmt.msc, and then click OK. Expand Processors to see CPU information.

Method 5 of 6:

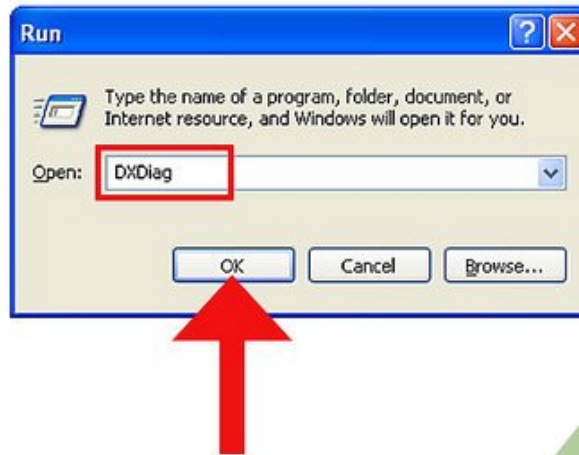
DirectX Diagnostic Tool

To view the CPU speed in the DirectX Diagnostics Tool,



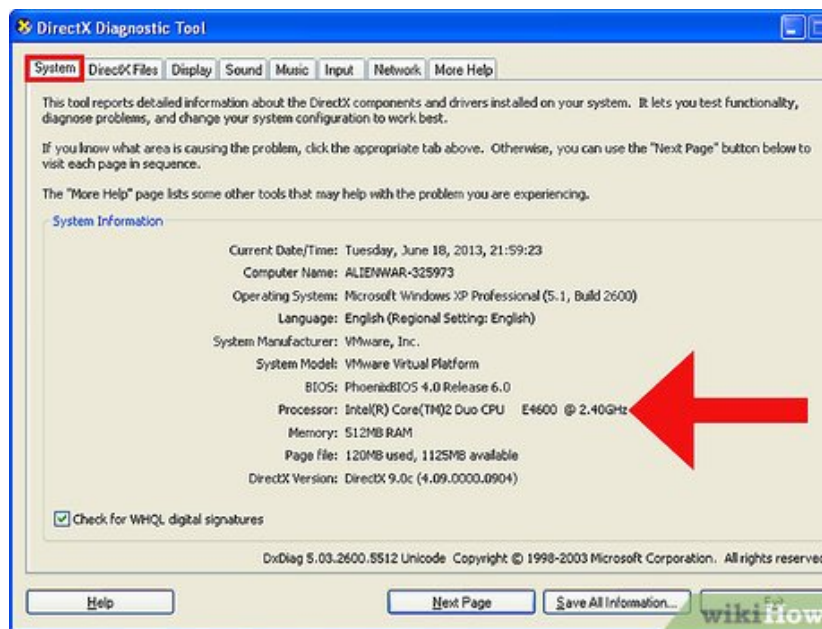
1.

Click Start, click Run.



2.

Type DXDiag, and then click OK.



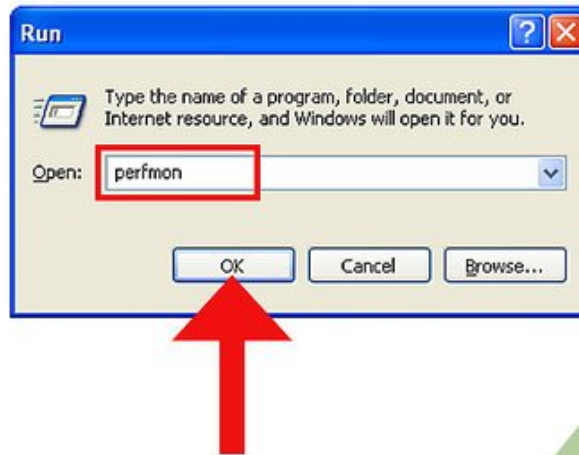
3.

Click the **System** tab. CPU information is displayed in the Processor line. The DirectX Diagnostic Tool uses the CPUID to retrieve CPU speed information.

Method 6 of 6:

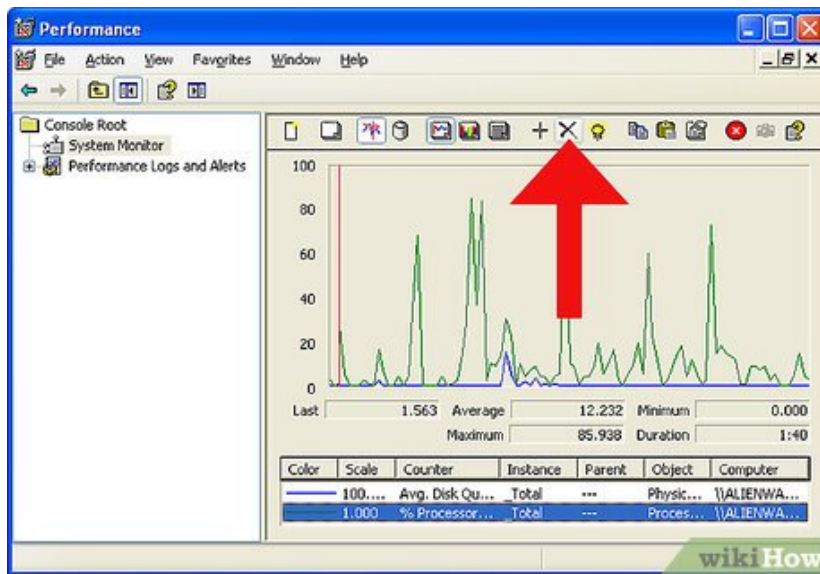
System Monitor

If your computer supports ACPI processor performance states, such as Enhanced Intel SpeedStep technology or AMD PowerNow! technology, you can use the System Monitor part of the Windows Performance tool to determine current CPU speed. To use System Monitor to determine CPU speed, follow these steps:



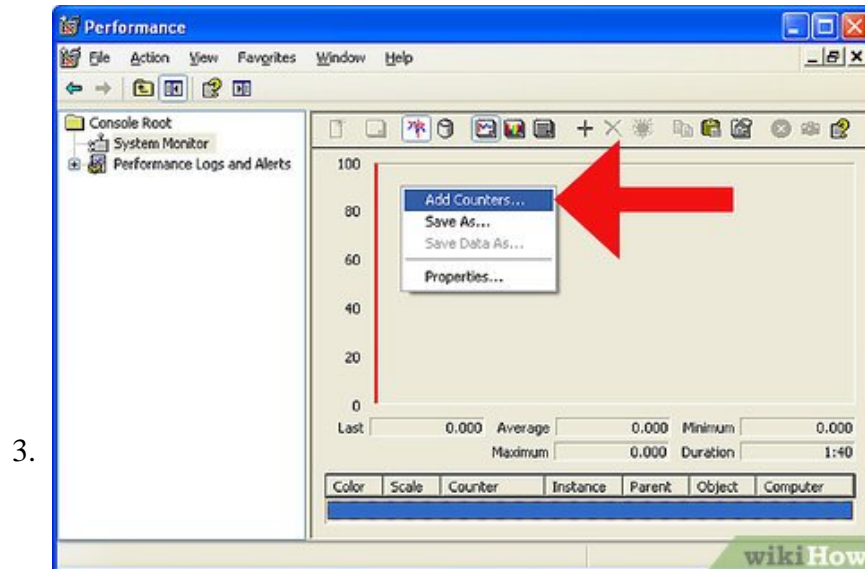
1.

Click Start, click Run, type perform, and then click OK.

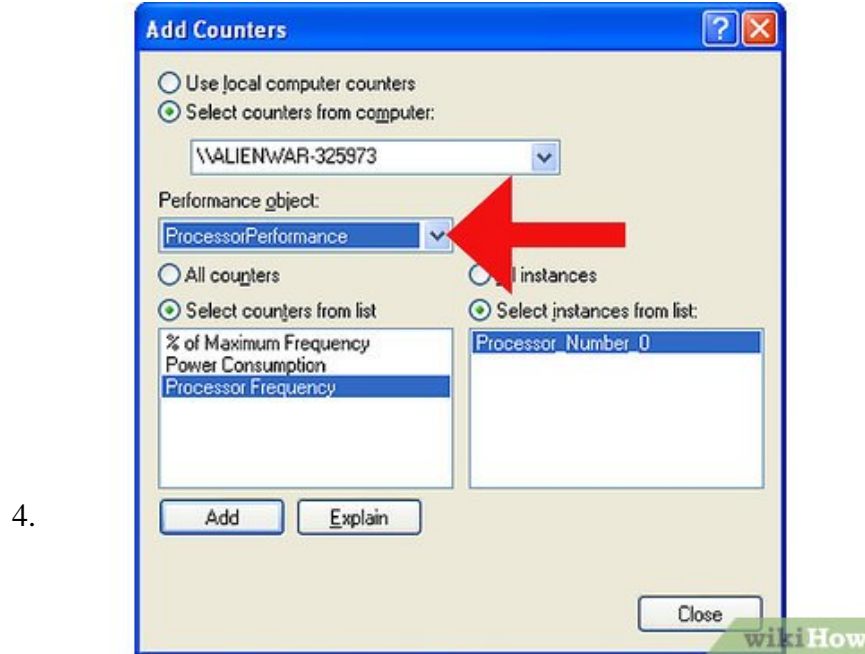


2.

Remove the default counters.

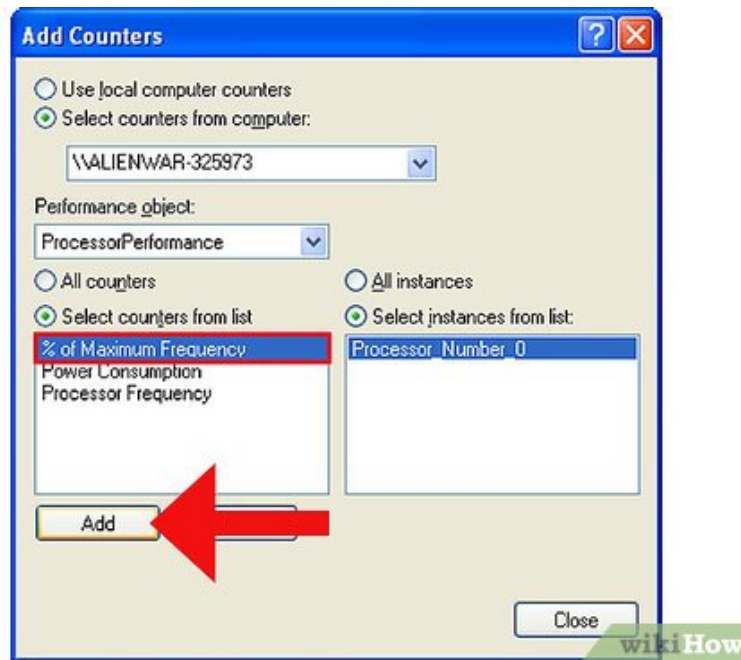


Right-click the chart, and then click Add Counters.



Click Processor Performance in the Performance object box.

5.



Click % of Maximum Frequency in the list of counters, and then click Add. Alternatively, you can click Processor Frequency in the list of counters, and then click Add.

You finished reading the article "**How to Determine Processor Speed**" edited by the [TipsMake](#) team. We hope this article has provided you with many useful tech tips and tricks. You can search for similar articles on tips and guides. Thank you for reading and for following us regularly.