

# How to delete text in photos with Paint

To delete text in images with simple images, you can use the built-in Paint tool on your computer.

If you want to delete text in photos, you will often think of using professional photo editing software such as Photoshop or online photo editing. However, if the image is not too complicated, simple and the background is white without much texture, you can use the Paint tool right away.

Paint also has an image deletion feature, although not as powerful as in Photoshop, but with simple images that don't have much detail, Paint can also be used. Depending on how the text is inserted in the image, you can combine some tools in Paint to delete text in the image.

1. Use Photoshop Mix to delete details in the image
2. Summary of shortcuts used on the Paint tool
3. Simple photo compositing on Microsoft Paint

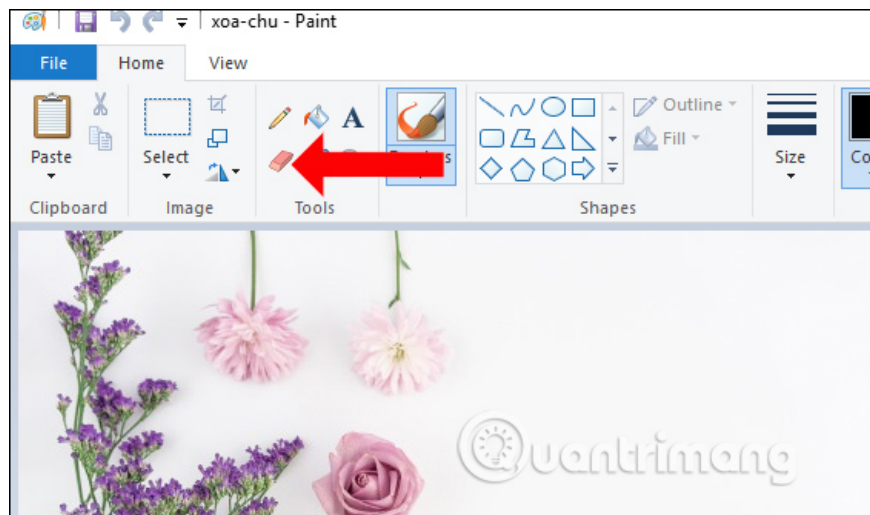
## Instructions to delete the text in the picture on Paint

### 1. With white background image

With a white background image with text inserted, deleting text on the image is extremely simple.

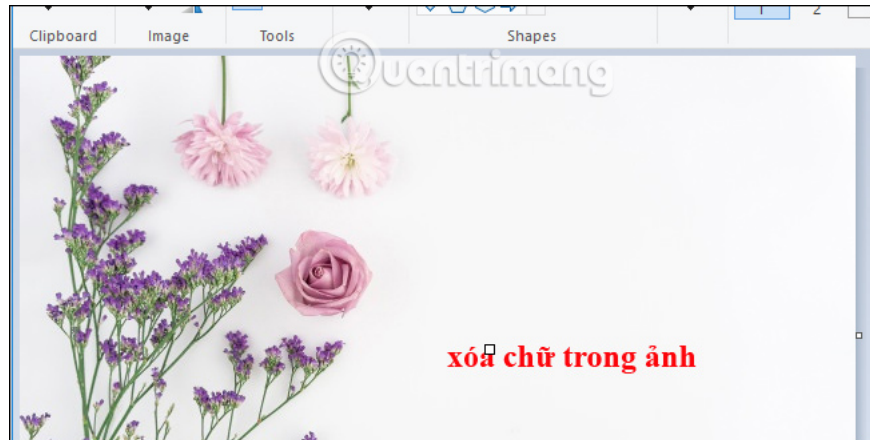
#### Step 1:

Click on **the Eraser eraser icon** on the toolbar to delete the extra details that are in the image.

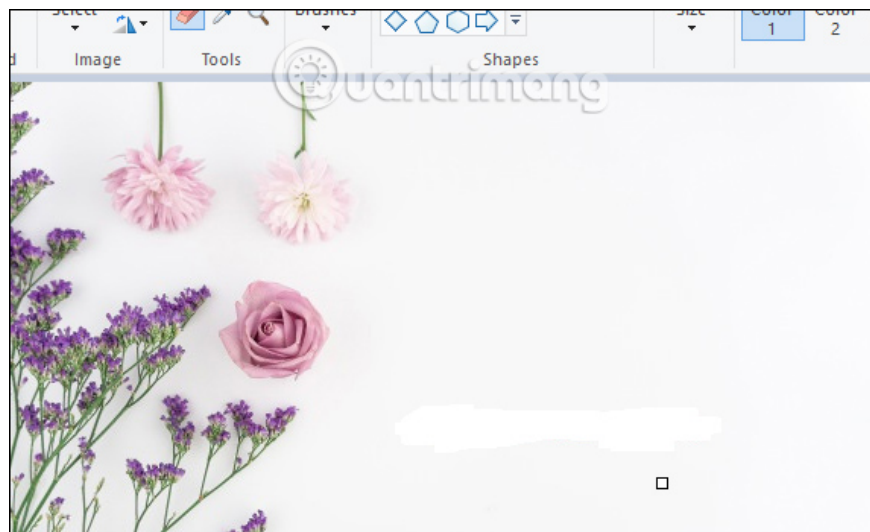


## Step 2:

You will then see a white square as shown below. Please move this white square into the text area in the image you want to delete.



The image after being deleted in Paint will be as below.

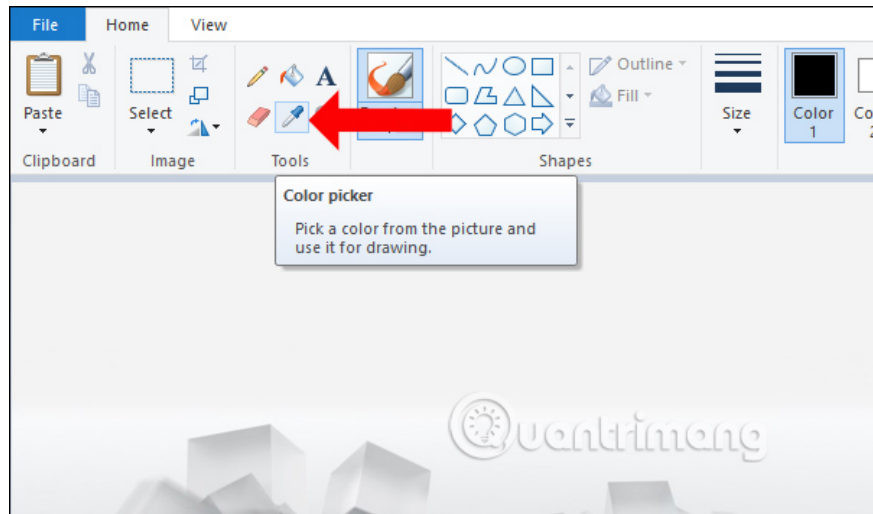


## 2. The text color on the background is not white

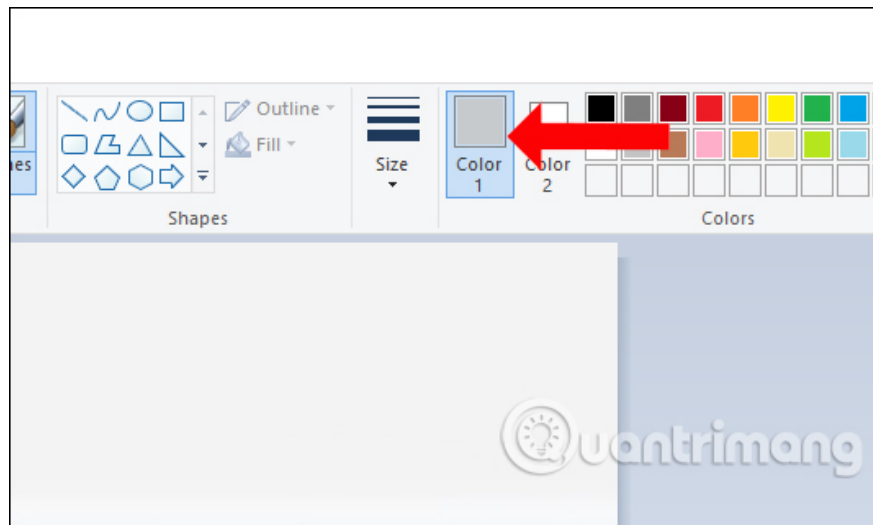
If you click on the Eraser icon to delete the text that you do not want to appear, when you delete the image, it will be quite dirty, because the deleted area will be white. In this case, you will need some more movement to remove the text on the image.

## Step 1:

First click on **the Color picker icon** next to the eraser image and then look down at the image, select which area is the same as the background color of the text in the image and click on the color area.

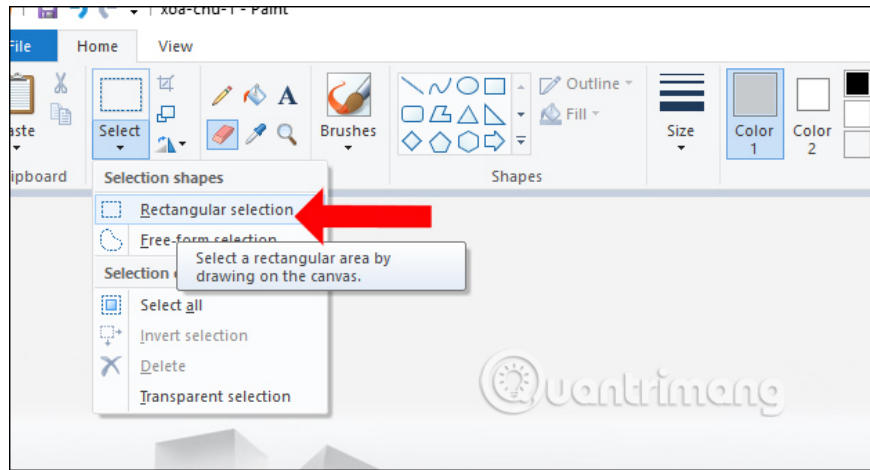


Immediately we will see the selected background color appear in the toolbar.



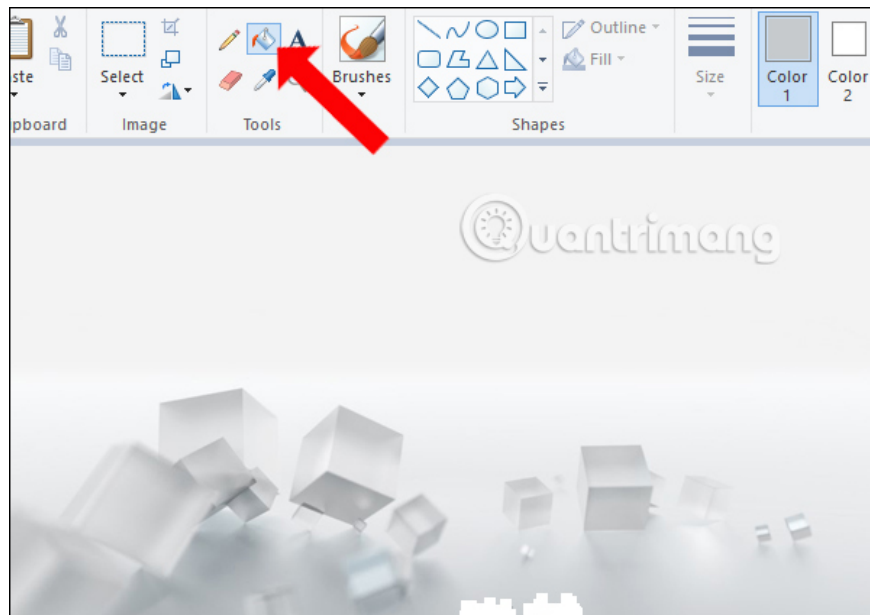
### Step 2:

Now click on **the eraser icon** and delete the text on the image. In the case if multiple text areas can click **Select** then press **Rectangular selection** to select the area. Circle the text you want to delete and **press Delete** to delete.



### Step 3:

Continue to click on **the Fill with color paint bucket tool** and fill the area with the word erase.



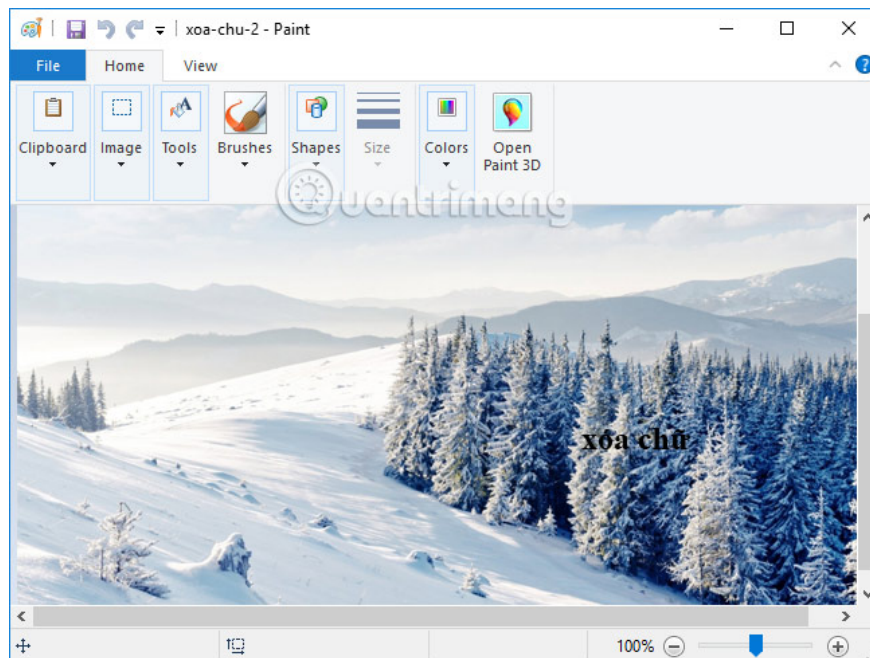
The image after being filled with the background color for the deleted image area will be as follows. In general, if this color area is too good or many details are attached, this way is relatively exposed.

If so, you can refer to another way to delete the image with Paint below.



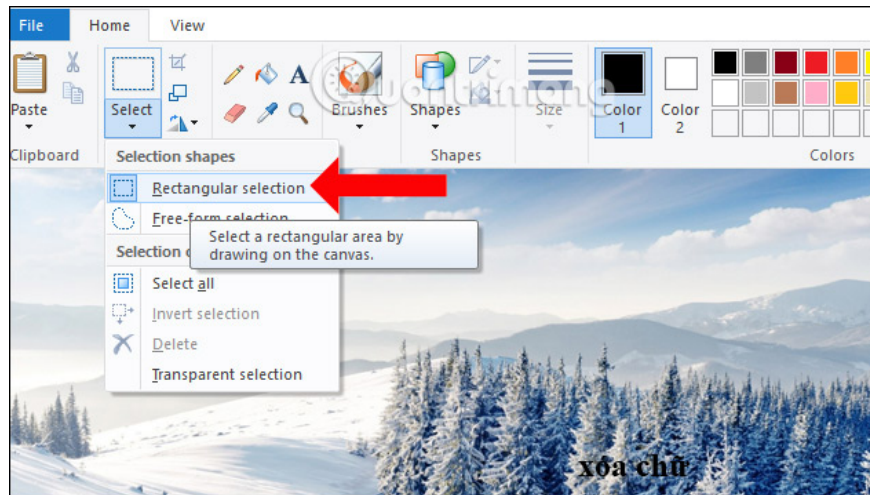
### 3. Delete text on complex photo backgrounds

Although Paint does not have the professional image delete function like in Photoshop, you can also add it with another tool when deleting text. We will try to apply the image below, with a complex background.

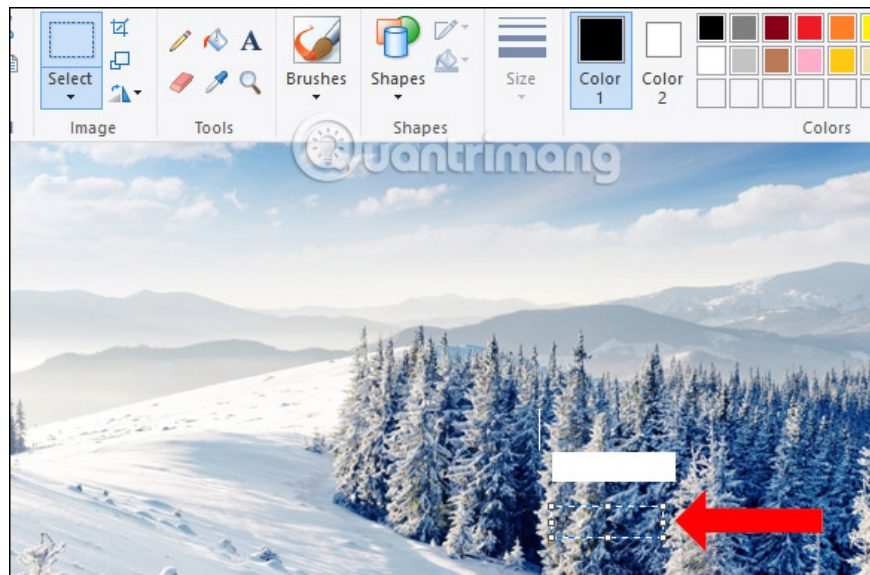


#### Step 1:

Click on **Select** and select **Rectangular selection** . Then circle the text you want to delete and press Delete. Immediately this text area on the image will disappear.

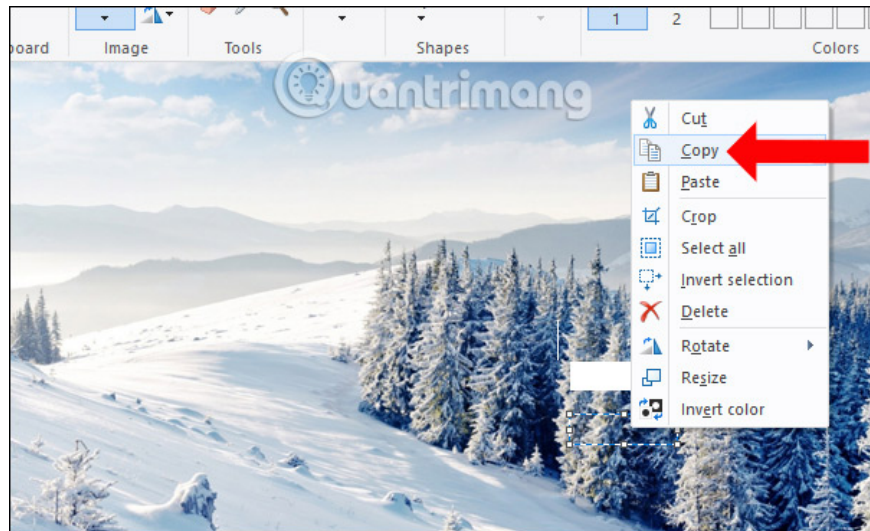


Next, **circle the next background** so that it is quite similar to the area just deleted. You need to balance the area just delete the text to select a new area so that it is just right, do not select a large area because selecting small areas will look more natural.



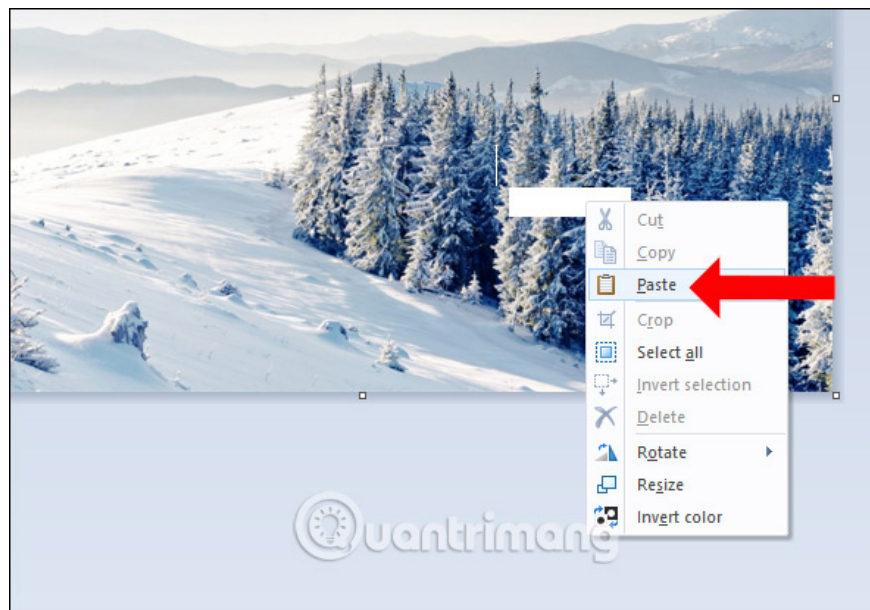
**Step 2:**

Right-click on the selected image area and then **click Copy** to proceed with copying the image area.

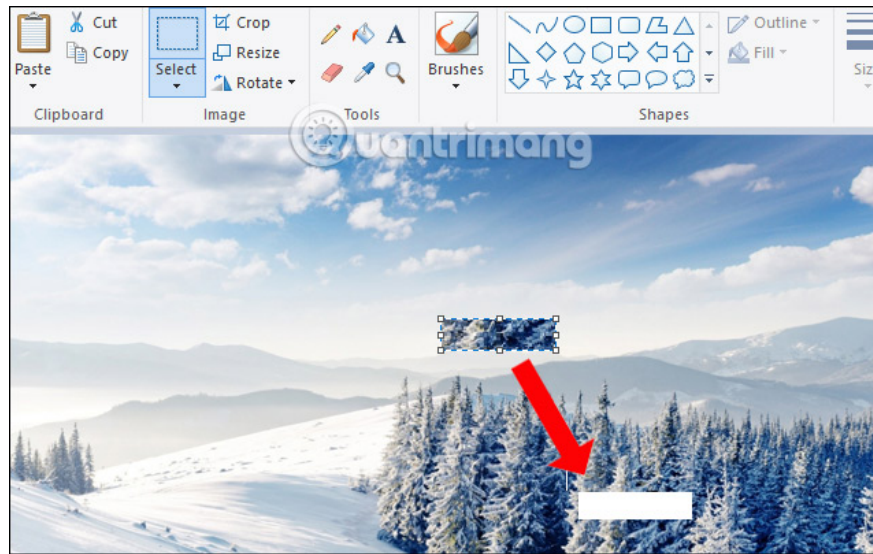


### Step 3:

Immediately the image area will be copied and become a separate object on the image. Move the image area into the newly deleted text area, or you can right-click and choose Paste.



You can press Ctrl + T to move the image size to match the image.



Using Paint to delete text on images only applies to cases where there are not many words on the image, simple images, details are not too much. With how to copy and paste another image area into the erase area, you should select the appropriate area so that when the photo collage is not too exposed.

See more:

1. How to download the latest Microsoft Paint Preview application on Windows 10?
2. Make sharp photos in 2 ways in Photoshop
3. Instructions for creating animated images and GIF images in Adobe Photoshop CS6

I wish you all success!

You finished reading the article "**How to delete text in photos with Paint**" edited by the [TipsMake](#) team. We hope this article has provided you with many useful tech tips and tricks. You can search for similar articles on tips and guides. Thank you for reading and for following us regularly.