

How to delete or hide complex passwords on Windows Server 2016

If you find using a complex password inconvenient, you can disable, hide, or delete it. Refer to the article below for instructions on how to remove or hide a complex password on Windows Server 2016.

Password security settings **must meet complexity requirements** to determine how complex the password should be. Password complexity requirements are imposed when changing passwords or creating new ones. While complex passwords make your device more secure, remember to store your passwords properly to avoid wasting time trying to crack them. A tip to avoid forgetting your computer password is to change it regularly .

If this policy is enabled, passwords generated or changed must meet the following minimum requirements:

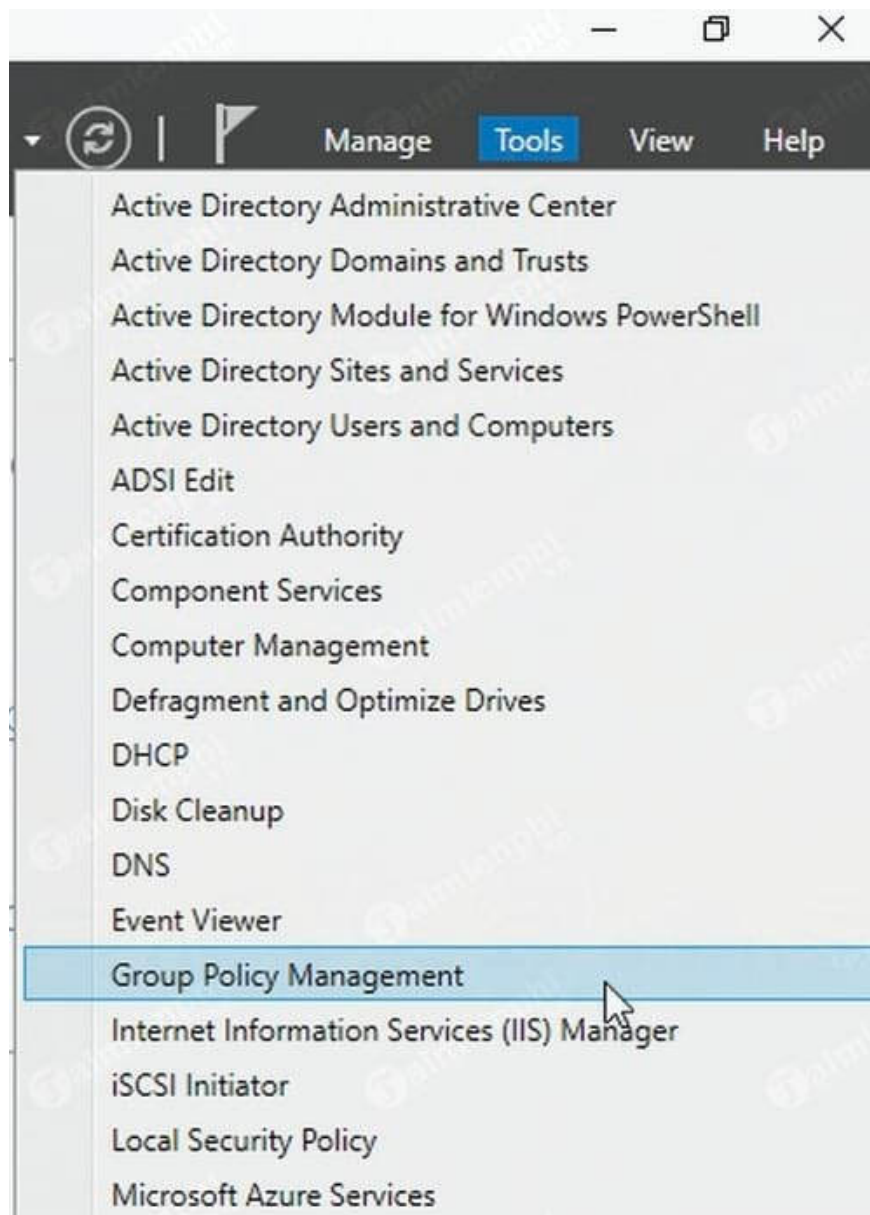
Passwords must not contain the entire account name or the entire display name (full name). Case-insensitive passwords are not accepted.

How to delete or hide complex passwords on Windows Server 2016

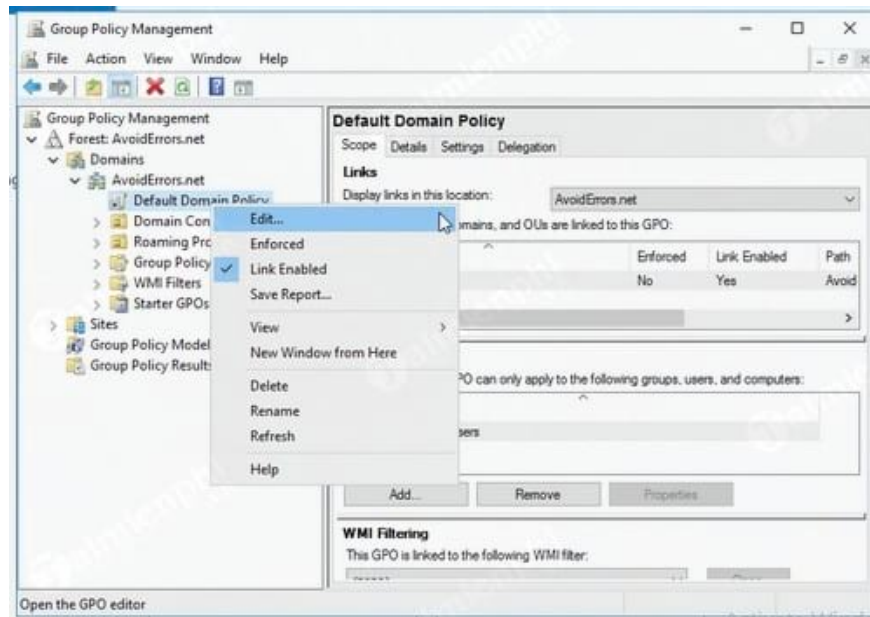
Step 1: Open **Server Manager** from the Start Menu.



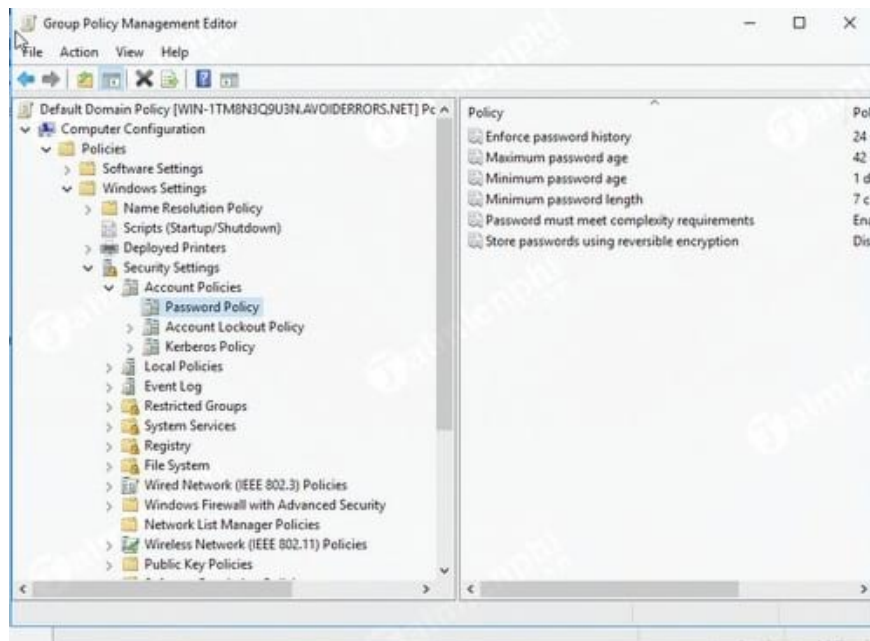
Step 2: Click on **Tools** , then select **Group Policy Management** .



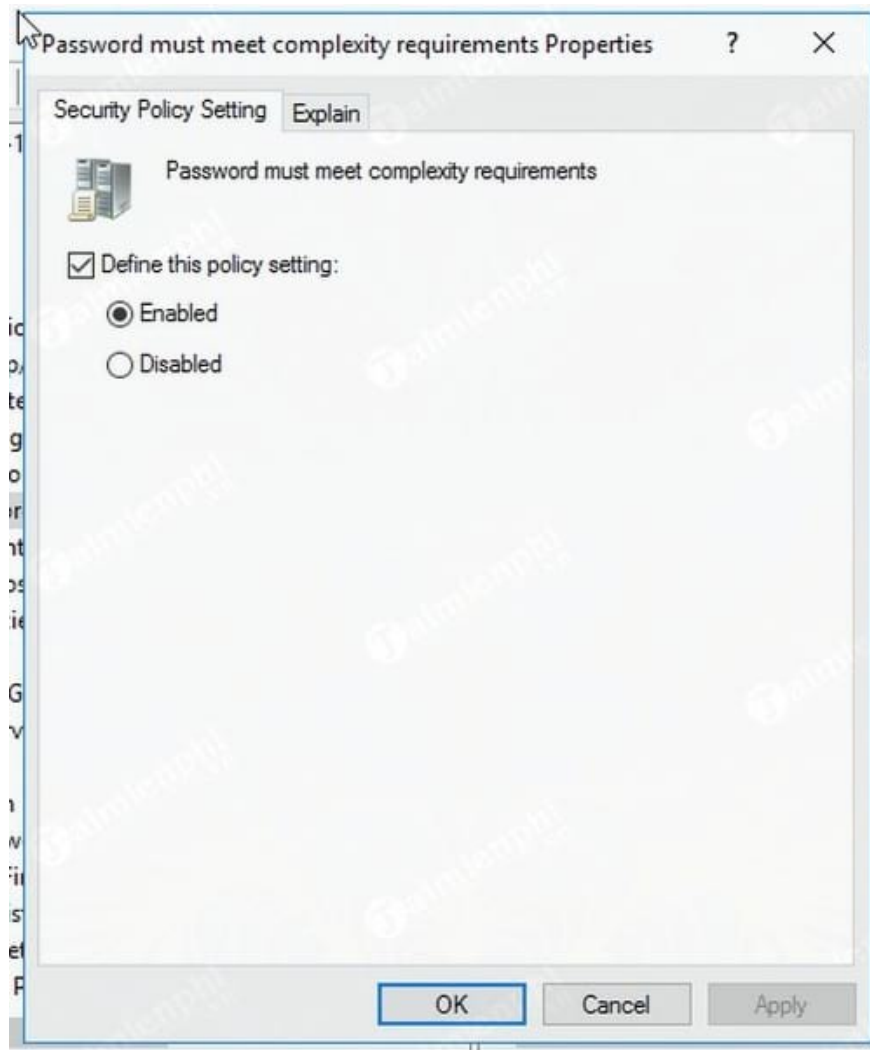
Step 3: Right-click on **Default Domain Policy** located below your domain name and select **Edit** .



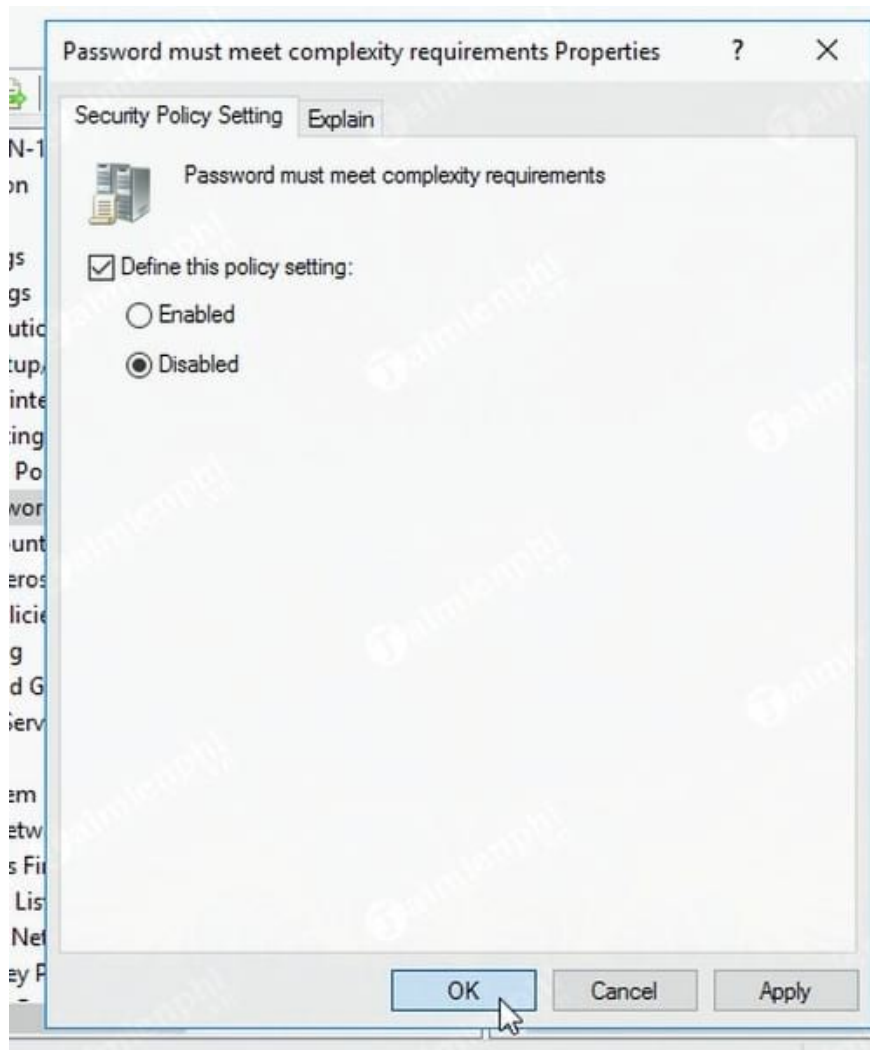
Step 4: Expand the policy settings to **Computer Configuration => Policies => Windows Settings => Security Settings => Account Policies => Password Policy**, as shown in the image below.



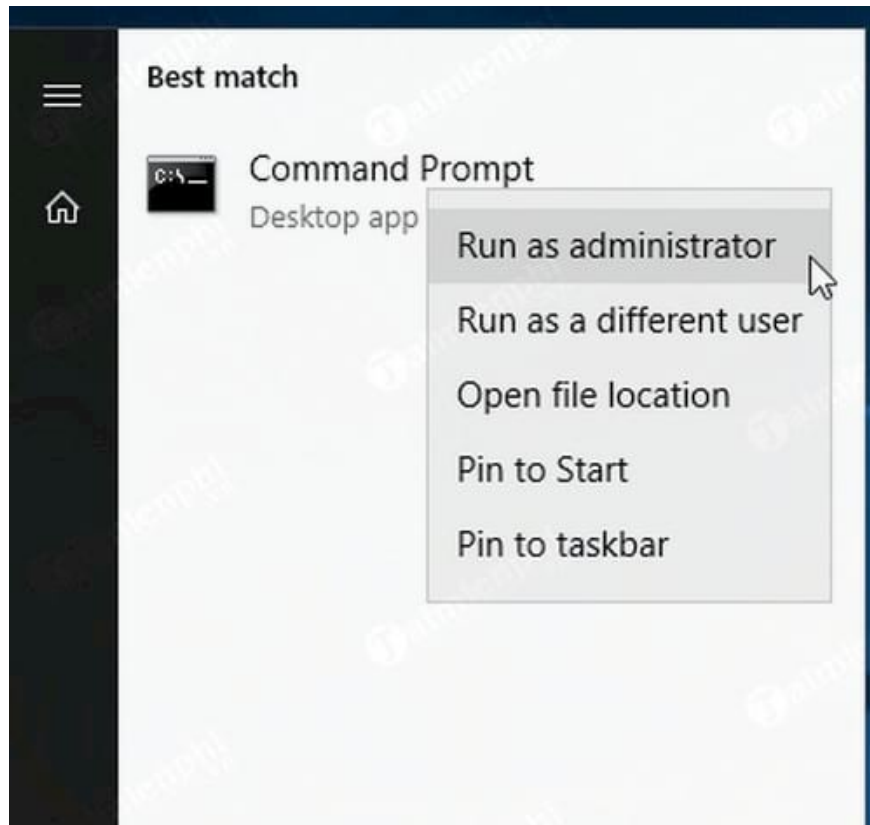
Step 5: From the right-hand pane, find and double-click the policy named **Password Must Meet Complexity Requirements**.



Step 6: Check the box next to **Disabled** , then click **OK** .

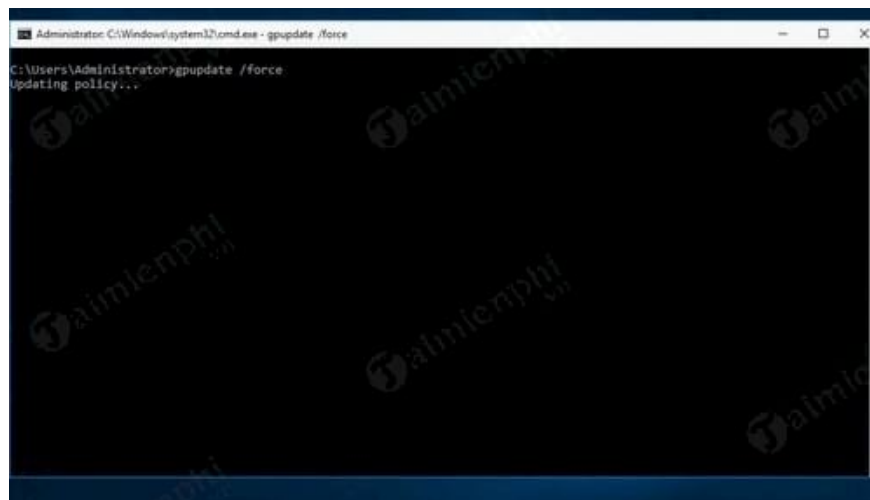


Step 7: Close the Group Policy Management window and run **Command Prompt as administrator** .

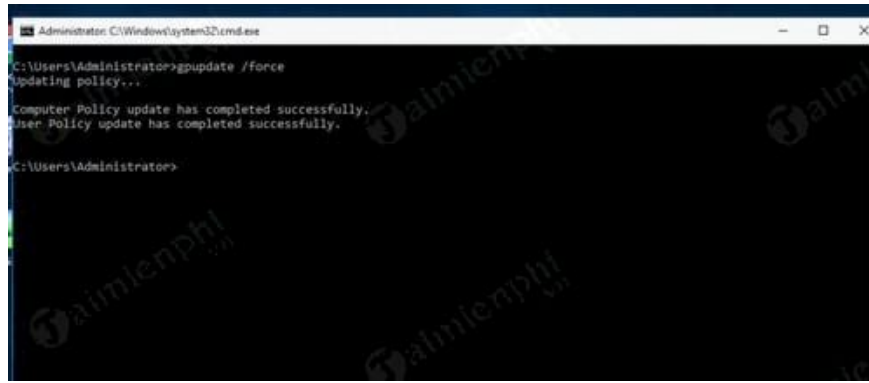


Step 8: Run the command below on your server, and all client computers will apply the changes:

gpupdate /force



Step 9: If the above steps are performed correctly, the result of the CMD command you executed will look like the image below:



```
Administrator: C:\Windows\system32\cmd.exe
C:\Users\Administrator>gpupdate /force
Updating policy...
Computer Policy update has completed successfully.
User Policy update has completed successfully.
C:\Users\Administrator>
```

Use PowerShell to disable complex passwords.

Step 1: Run PowerShell as administrator from the Start Menu.



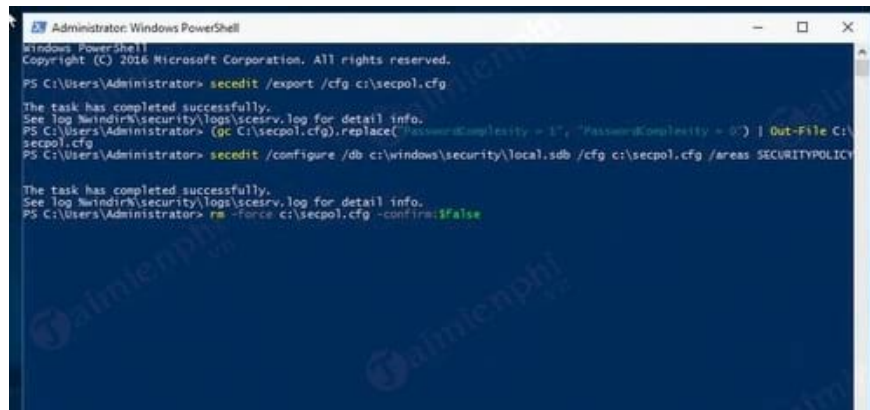
Step 2: Copy and paste the commands below into the PowerShell window to disable complex passwords:

```
secedit /export /cfg c:secpol.cfg
```

```
(gc C:secpol.cfg).replace('PasswordComplexity = 1', 'PasswordComplexity = 0') | Out-File C:secpol.cfg
```

```
secedit /configure /db c:windowssecuritylocal.sdb /cfg c:secpol.cfg /areas SECURITYPOLICY
```

```
rm -force c:secpol.cfg -confirm:$false
```



```
Administrator: Windows PowerShell
Windows PowerShell
Copyright (C) 2016 Microsoft Corporation. All rights reserved.

PS C:\Users\Administrator> secedit /export /cfg c:\secpol.cfg

The task has completed successfully.
See log %windir%\security\logs\scsenv.log for detail info.
PS C:\Users\Administrator> (gc C:\secpol.cfg).replace("PasswordComplexity = 1", "PasswordComplexity = 0") | Out-File C:\secpol.cfg
PS C:\Users\Administrator> secedit /configure /db c:\windows\security\local.sdb /cfg c:\secpol.cfg /areas SECURITYPOLICY

The task has completed successfully.
See log %windir%\security\logs\scsenv.log for detail info.
PS C:\Users\Administrator> rs -Force c:\secpol.cfg -confTras:$false
```

Step 3: At this point, **Policy Password Complexity** is disabled, and the process of deleting or hiding complex passwords on Windows Server 2016 is successful.

Above, TipsMake has guided you on how to remove or hide complex passwords on Windows Server 2016 through Group Policy Management and PowerShell. We hope you will successfully implement this. For other Windows operating systems, you can choose to remove your computer password if you have forgotten it or if someone has "played a prank" by changing your password. Removing the password means your system will no longer require you to enter the password when logging in.

You finished reading the article "**How to delete or hide complex passwords on Windows Server 2016**" edited by the [TipsMake](#) team. We hope this article has provided you with many useful tech tips and tricks. You can search for similar articles on tips and guides. Thank you for reading and for following us regularly.