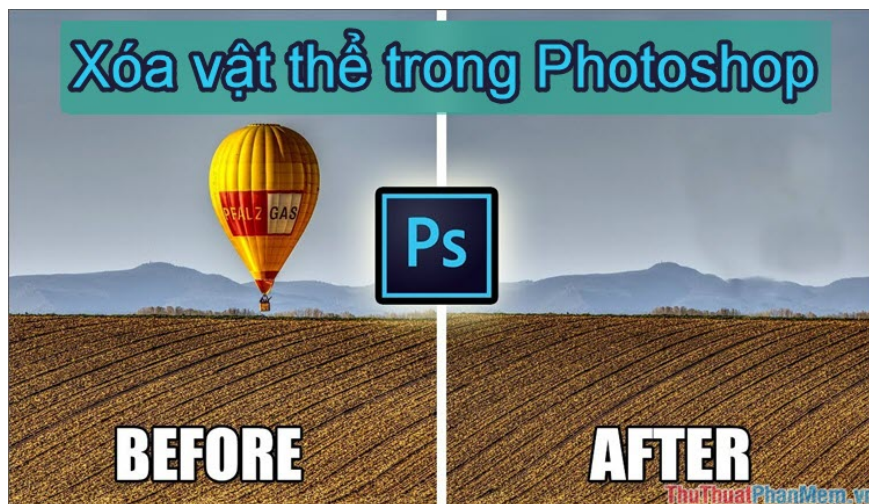


How to delete objects and objects in Photoshop

How to delete objects and objects in Photoshop. While taking photos sometimes we cannot help but encounter flaws such as the wrong angle leading to 'uninvited' objects appearing in our photographs. Fortunately, photo editing software specializes in

While taking photos sometimes we cannot help but encounter flaws such as the wrong angle leading to 'uninvited' objects appearing in our photographs. Fortunately, professional photo editing software Photoshop can help us process photos to become professional and in the desired way.

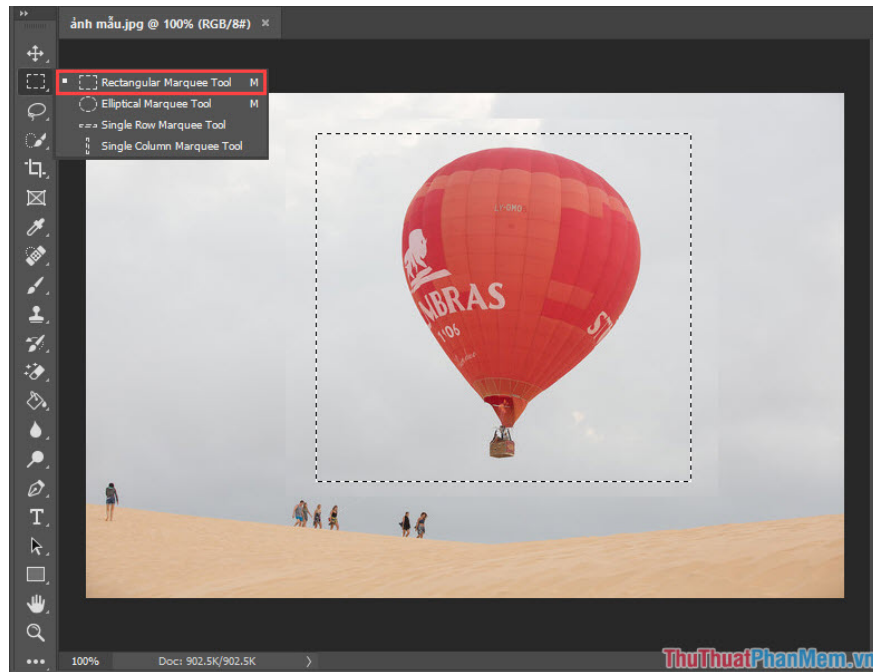


Today's article, Thuthuatphanmem.vn will guide you how to delete objects and objects in Photoshop software in the simplest way.

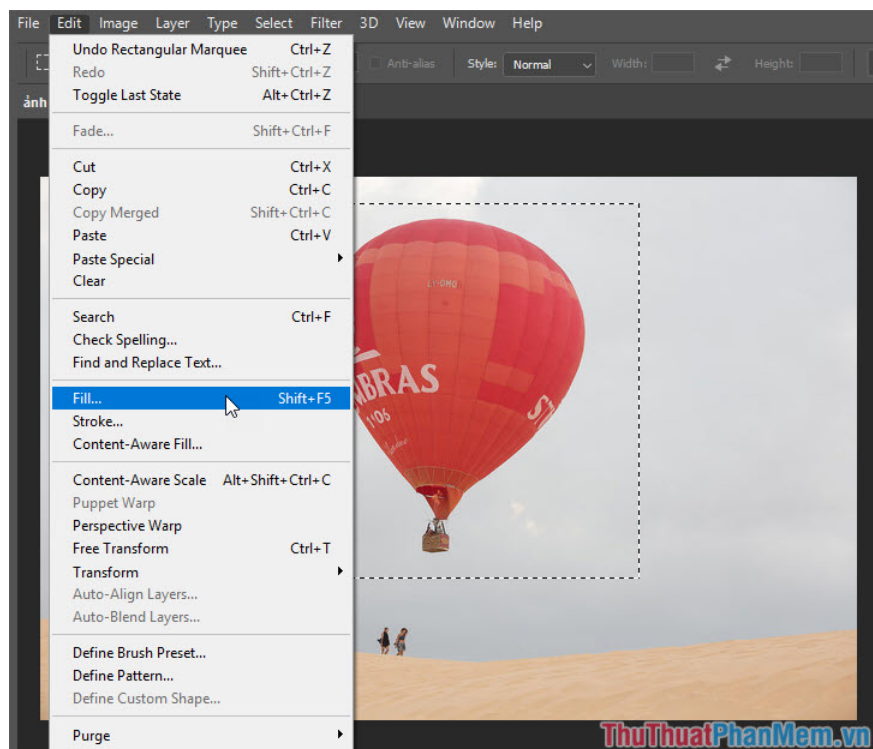
1. Delete objects and objects with Content - Aware Fill tool

This is a quick and effective tool to remove simple and less detailed objects from a photo. The downside of this tool is that it may not be really optimal and may create blur after deletion.

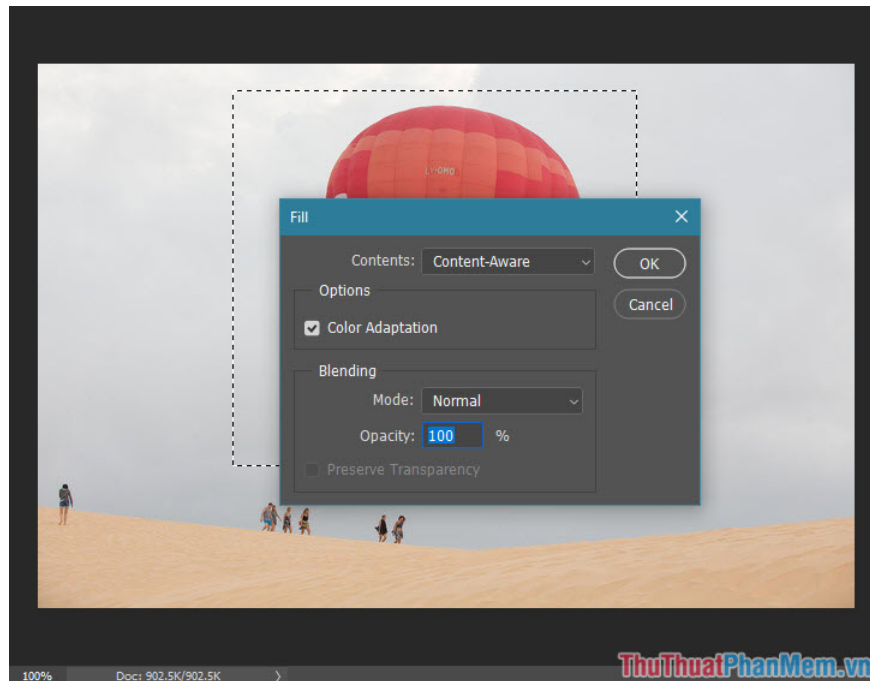
Step 1: You open the image to delete objects in Photoshop. Use the **Rectangular Marquee Tool** to localize the object to be deleted.



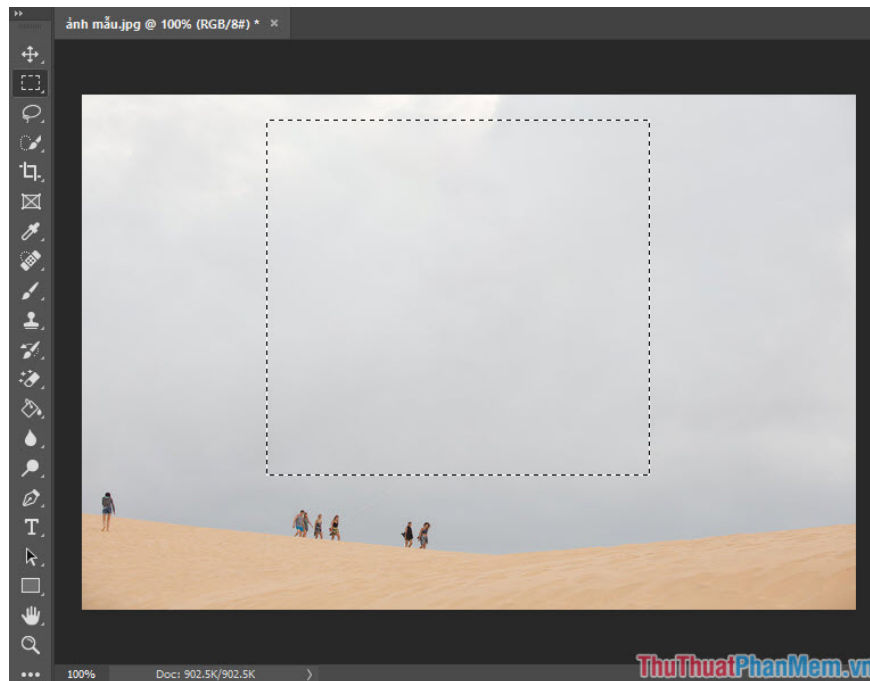
Step 2: Go to **Edit**, select **Fill** or press **Shift + F5** to open **Content-Aware Fill** tool .



Step 3: You set the **Content-Aware** parameter as shown below and then click **OK**.



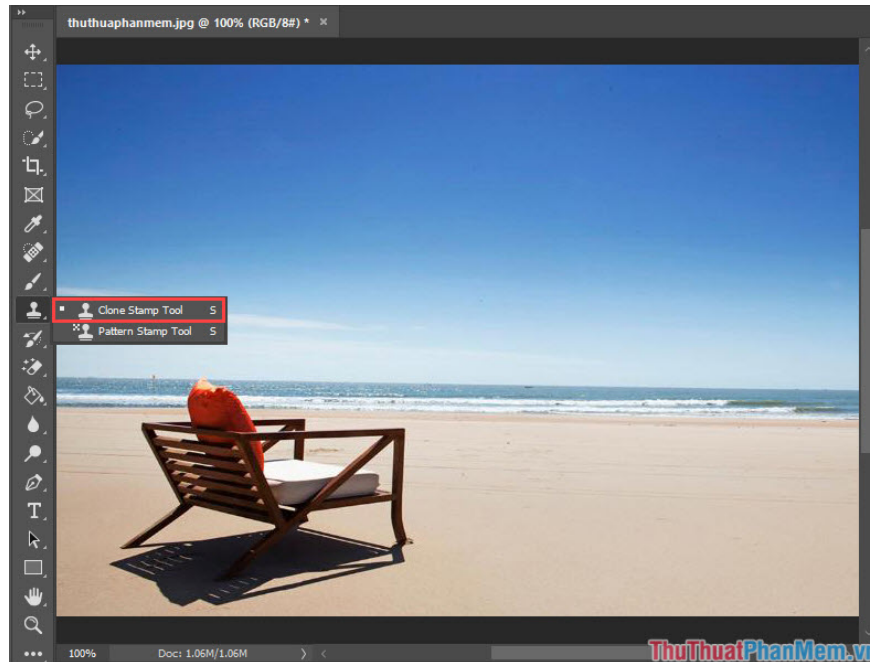
The image below is a picture after successfully erasing objects with **Content-Aware Fill** . If you see the image when you delete the traces still not satisfied, then you localize the error image and then use **Content-Aware** to correct it so that the image looks the best.



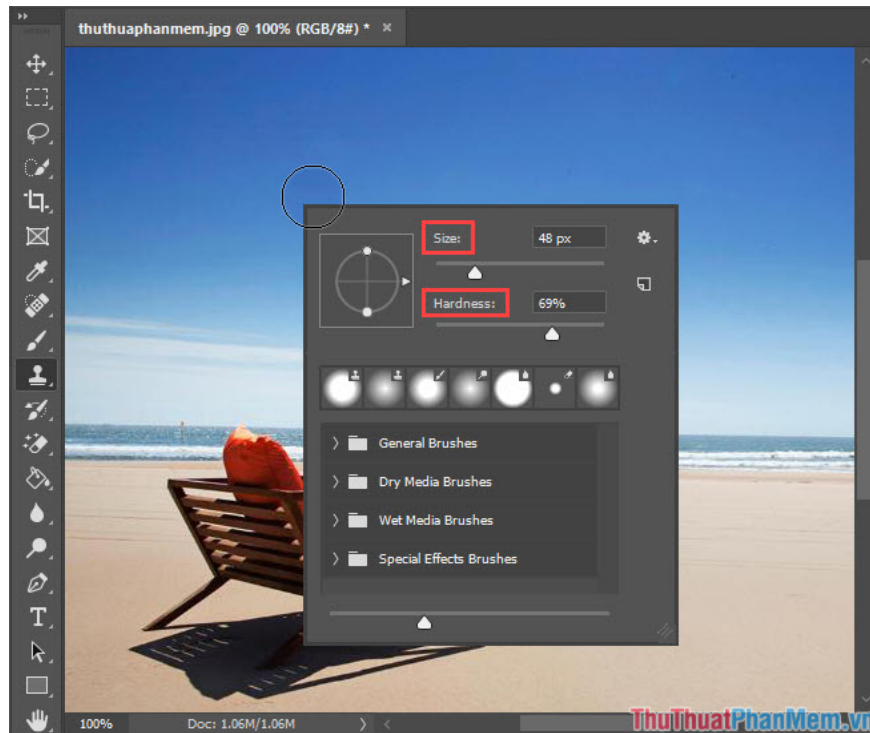
2. Use the Clone Stamp Tool

This tool is less used by difficult implementation and takes more time than **Content-Aware Fill** tool . However, if you combine the **Content-Aware Fill** with the **Clone Stamp Tool** , it is much better to remove the object of the image and produce the complete image with much better quality and realism.

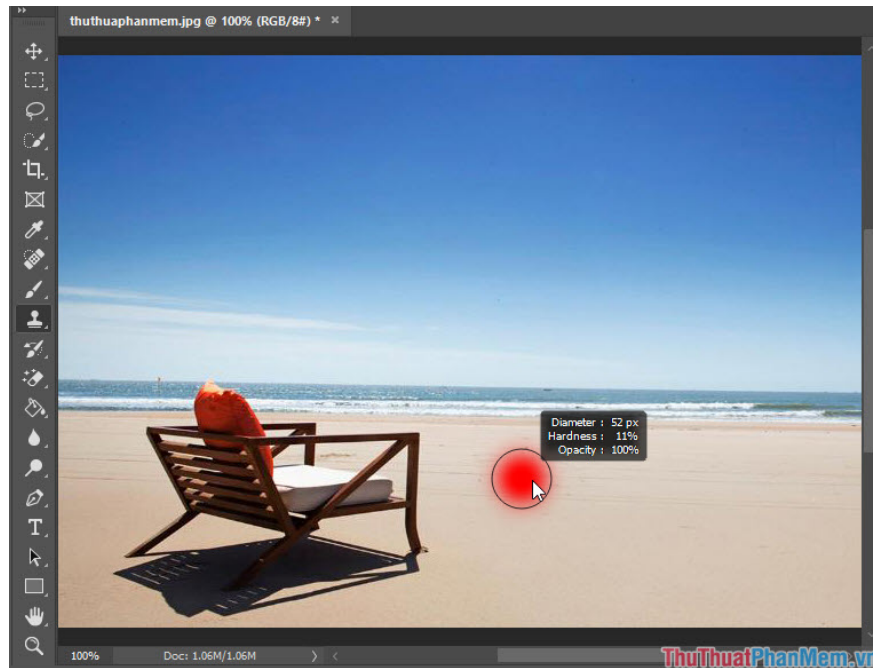
Step 1: Open the image you need to delete the object and open the **Clone Stamp Tool** as shown below.



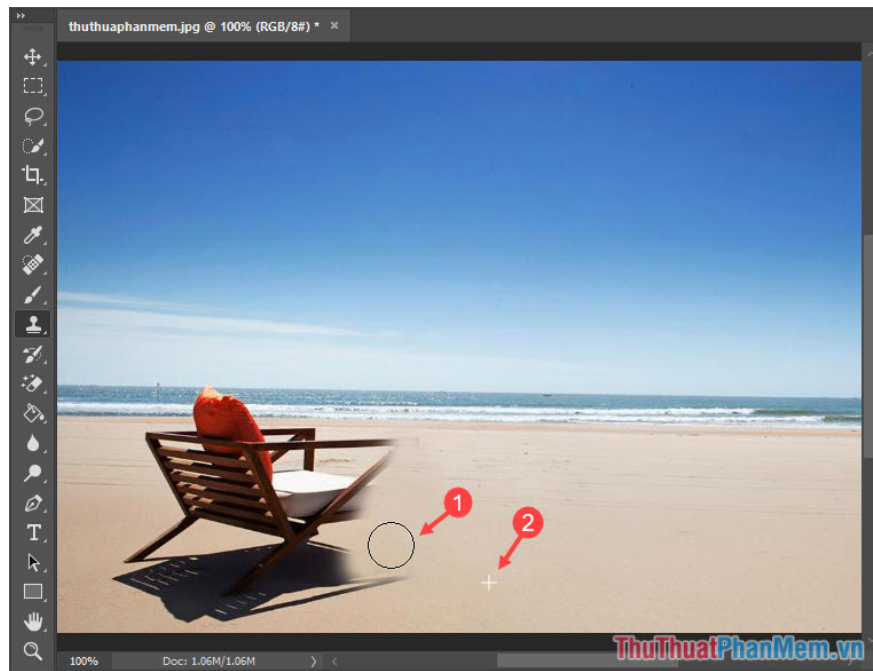
Step 2: Right-click on the screen, the **Clone Stamp Tool Property** window will appear. Here, we resize the selection by sliding the **Size** scroll bar . With the **Hardness** part, we will adjust the opacity of the border. **The** smaller the **hardness** is, the more blurred the edges are, suitable for editing more detailed photos.



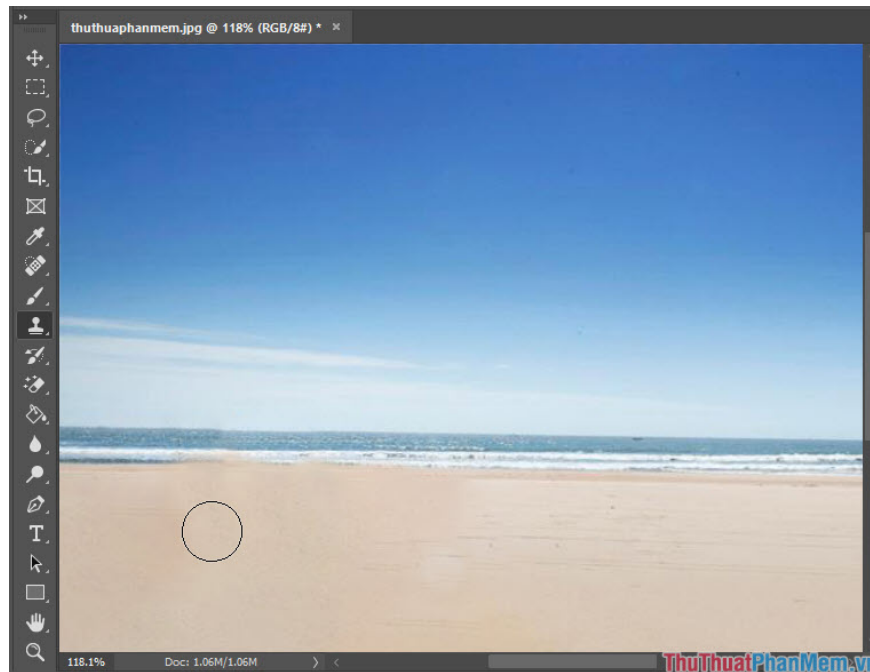
Step 4: Hold the **Alt** key and right-click the original image area to select the image area to copy.



Step 5: You proceed to delete the object by holding the left mouse button and moving the area to be copied. When moving the copy area, notice that the circle (1) is the area we are copying and the plus sign (2) is the original area.



Once completed we will have the photo deleted the chair as shown below.



With two ways to delete objects and objects with **Content-Aware Fill** and **Clone Stamp Tool** . Hope readers understand how to delete objects in Photoshop. However, to remove objects effectively, you need to combine both ways, you can delete with **Content-Aware Fill** and use the **Clone Stamp Tool** to compensate for the defective images. Thank you for following this article, if the article has some unknown parts, please comment in the comment section below!

You finished reading the article "**How to delete objects and objects in Photoshop**" edited by the [TipsMake](#) team. We hope this article has provided you with many useful tech tips and tricks. You can search for similar articles on tips and guides. Thank you for reading and for following us regularly.
