

How to delete and remove Internet Explorer on Windows 10

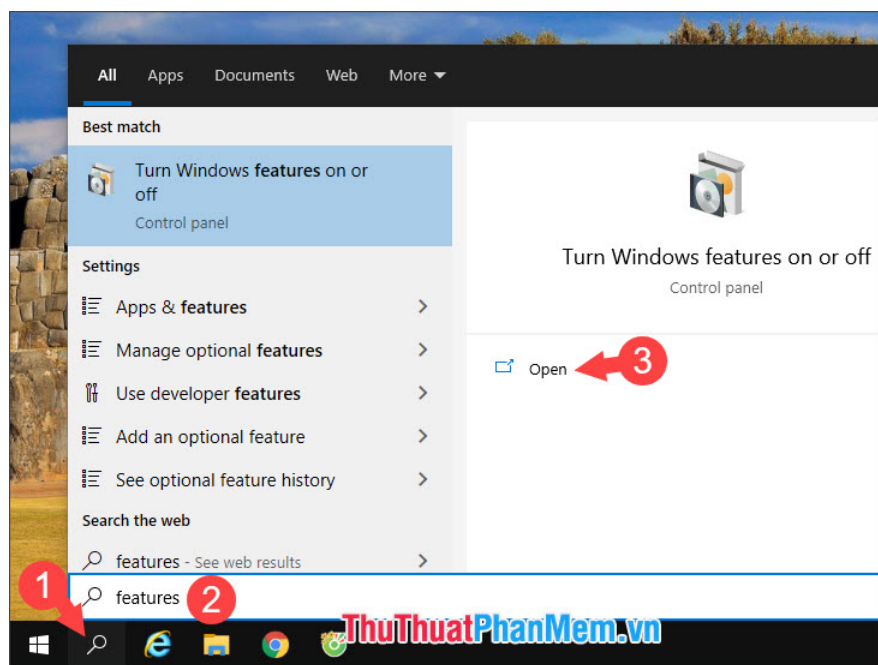
How to delete and remove Internet Explorer on Windows 10. On Windows 10, Microsoft Edge and Edge Chromium are the most valuable products of Microsoft and Internet Explorer has soon gone to the past after a long time topping the list. Book the most popular browsers in the world.

On Windows 10, the Microsoft Edge and Edge Chromium browsers are Microsoft's most valuable products, and Internet Explorer has been a thing of the past for a long time topping the list of most popular browsers in the world. .

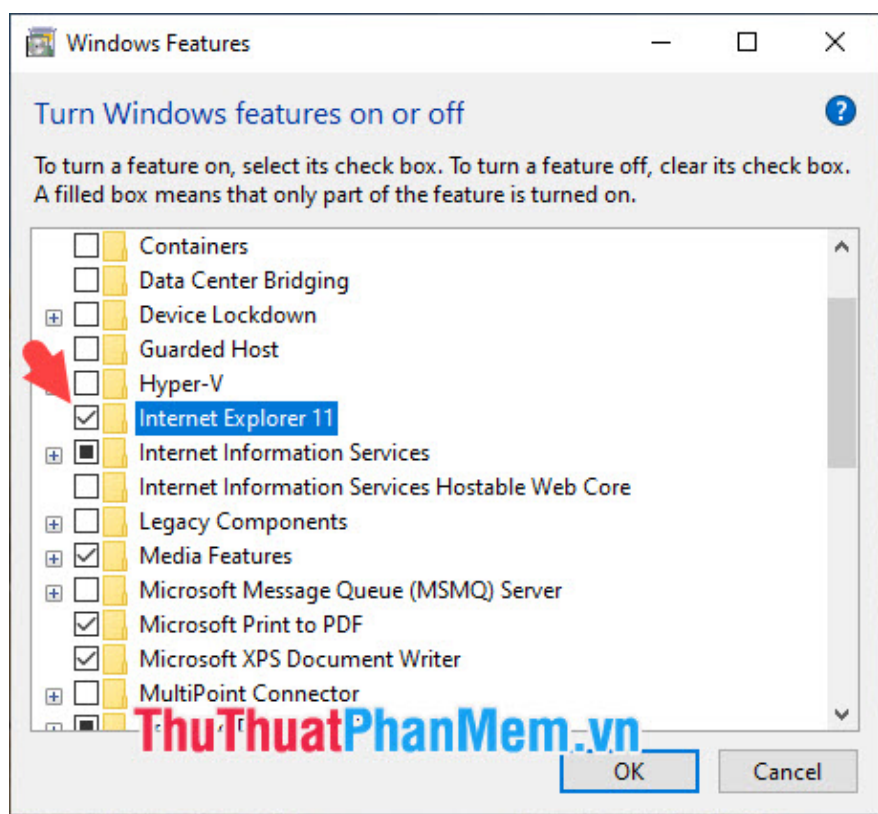


If you notice, Internet Explorer is still present in our Windows 10 and how to remove this browser when you are no longer using it? Let's find out how to delete and uninstall Internet Explorer on Windows 10 in the following article!

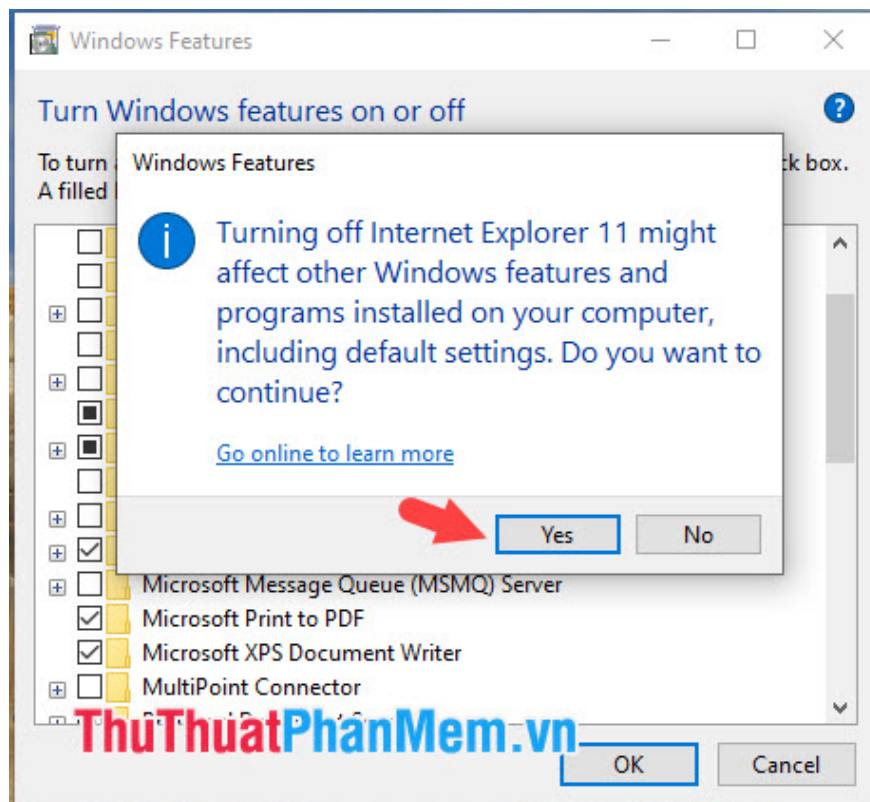
Step 1: You click on **Search (1)** or using the key combination **Windows + S** . Then you search for the keywords **features (2)** => **Open (3)** in the **Turn Windows features on or off** section .



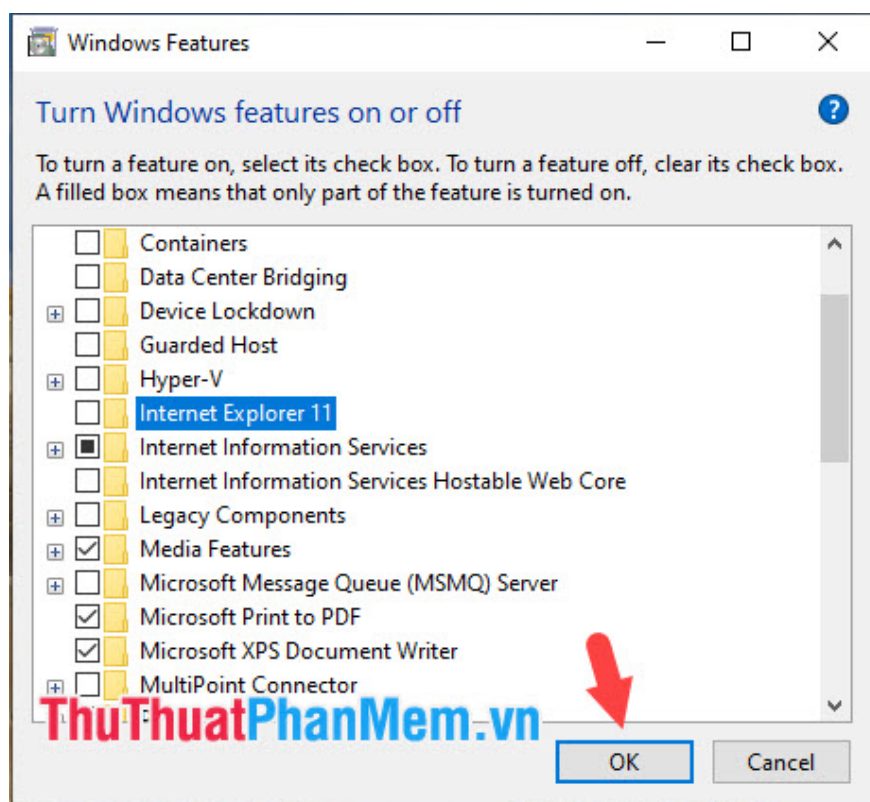
Step 2: Click **Internet Explorer** as shown below.



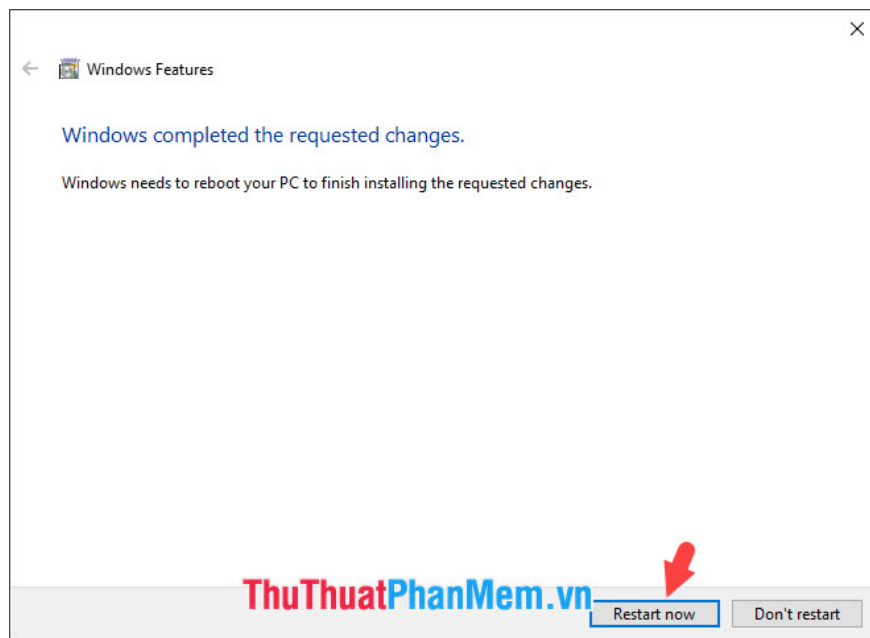
If a message appears, click **Yes** to agree to delete **Internet Explorer** .



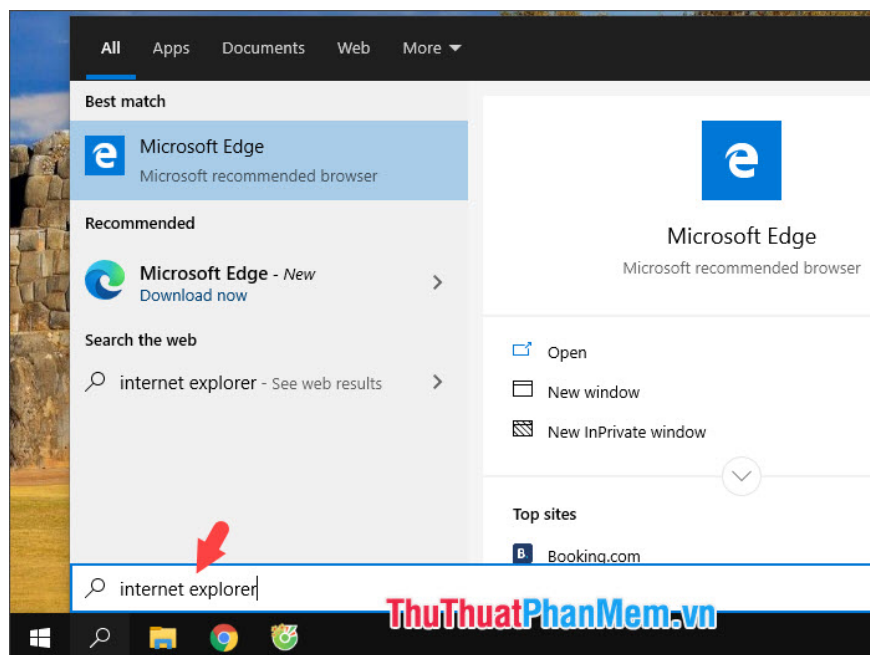
Step 3: Next, click **OK** to save the settings.



After Windows has finished uninstalling **Internet Explorer** , click **Restart now** to restart the computer.



Step 4: After restarting your computer, try opening **Search** and searching, the **Internet Explorer** results are no longer successful.



Uninstalling Internet Explorer on Windows 10 will help us save a small amount of storage space and minimize the security holes related to this browser. Have a nice day!

You finished reading the article "**How to delete and remove Internet Explorer on Windows 10**" edited by the [TipsMake](#) team. We hope this article has provided you with many useful tech tips and tricks. You can search for similar articles on tips and guides. Thank you for reading and for following us regularly.