

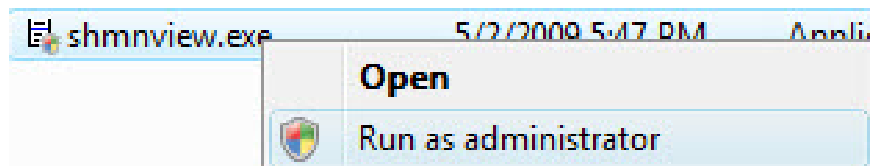
How to delete and improve the right-click menu

The right-click menu is one of the most useful interface components in Windows, but sometimes, especially when we install a lot of applications, the system may be a bit slow and be filled with shortcuts that they I really don't use it.

The right-click menu is one of the most useful interface components in Windows, but sometimes, especially when we install a lot of applications, the system may be a bit slow and be filled with shortcuts that they I really don't use it. If you want to simplify to accommodate the options you want to use, use the tools we introduced in this article to allow you to delete and customize the right-click context menu according to what you want. In this article, I will explain in detail how you can find these software and what they can do and how to use them.

Note : Before following the steps below, make sure you set the default programs correctly and create a restore point for your system so that in some cases you can switch revert to the previous state easily.

The apps below won't work properly if you don't right-click on their shortcuts and select '*Run as administrator*'. If you encounter any errors or changes that are not applied correctly, then you may not have run them as an administrator.



Download and install tools ShellMenuView, ShellExView and FileMenu

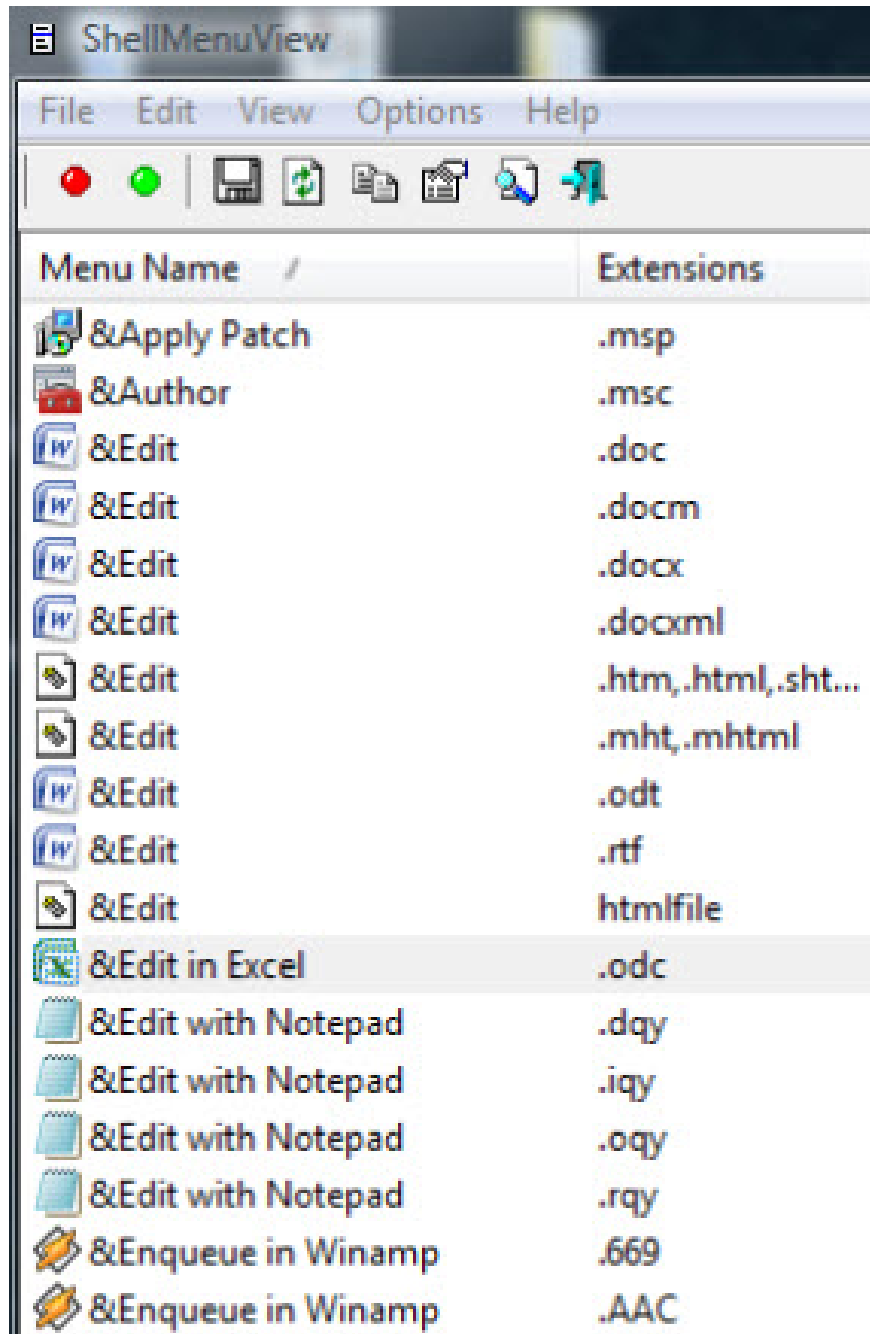
The tools you need to download and install are:

1. ShellMenuView - This tool is great for disabling the so-called "static" mouse menu items. Typically, these options are not organized by folders but are listed as individual entries. Examples of such entries are *Play*, *Enqueue* and *Bookmark options* installed by Winamp or *'Add / Play with'* with VLC Media Player.
2. ShellExView - This is a good tool for deleting content menu entries installed by other applications. These content menu entries often extend the functionality of the right-click menu and most are organized in folders. Examples of such entries are the *'Scan for viruses'* option that appears when you install antivirus software, *'Adobe Drive CS4'* when you install Adobe Creative Suite 4 or menus installed by compressors and solvers. Compress files like 7-Zip or WinZip.
3. FileMenu Tools - This application allows you to add advanced operations to the right-click menu and to configure the *Send To* menu. Although there are other similar applications, we chose this app because it has a lot of options set up in advance. If you don't like this tool, try with Open ++. It has fewer default options but can be quite user friendly.

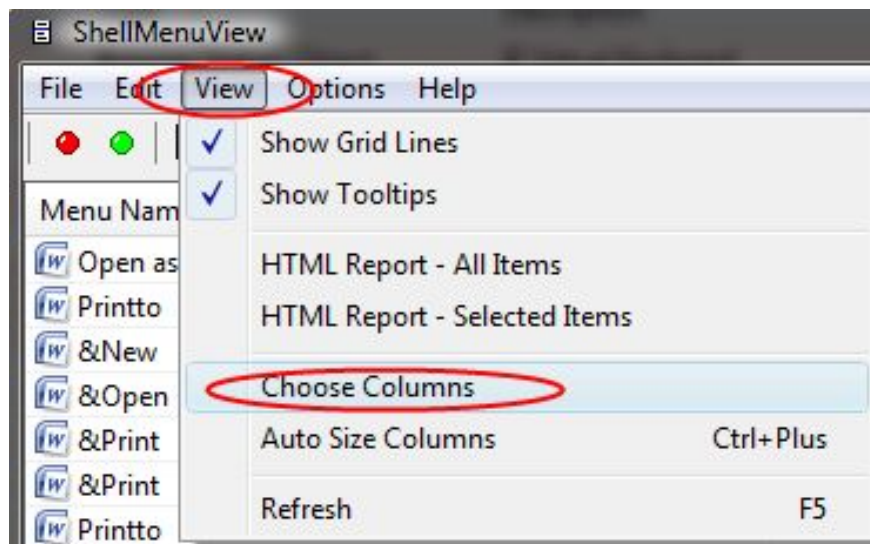
Note: These tools are available in both 32-bit & 64-bit versions. They also have versions in different languages. You should check their download pages to find the appropriate download links.

How to work with ShellMenuView

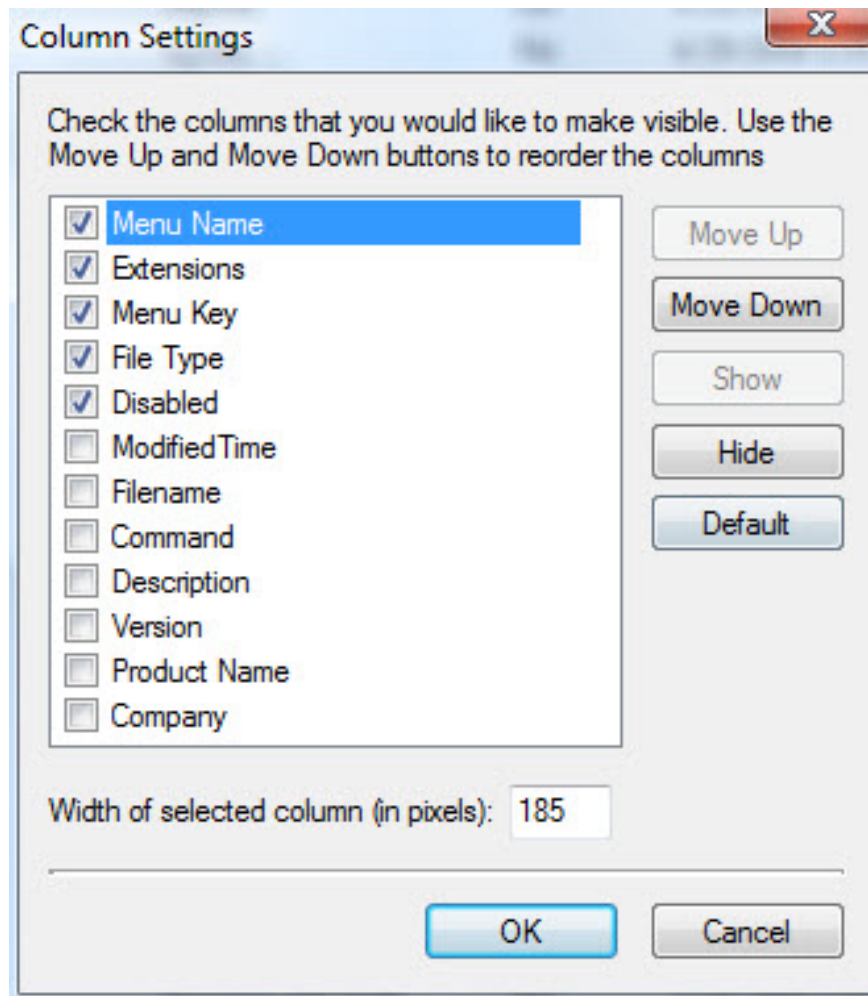
The interface of *ShellMenuView* has many columns but only a few of them are really interesting to ordinary users. The first two columns list the menu names and file extensions that they can open in the right-click menu. The remaining columns contain information about file type, file status, file name, description, version, product name and company.



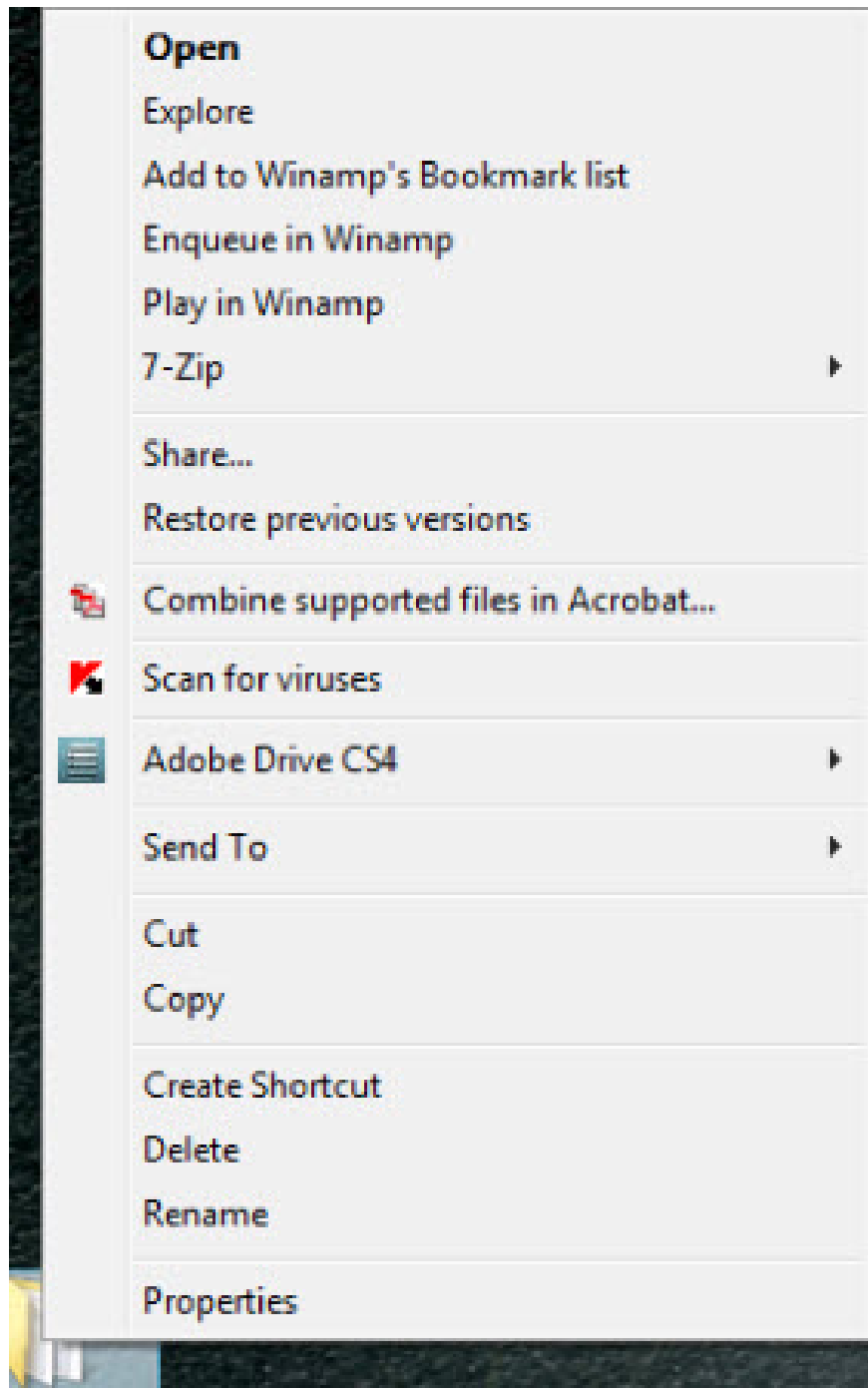
You can customize the number of columns by clicking *View -> Choose Columns* .



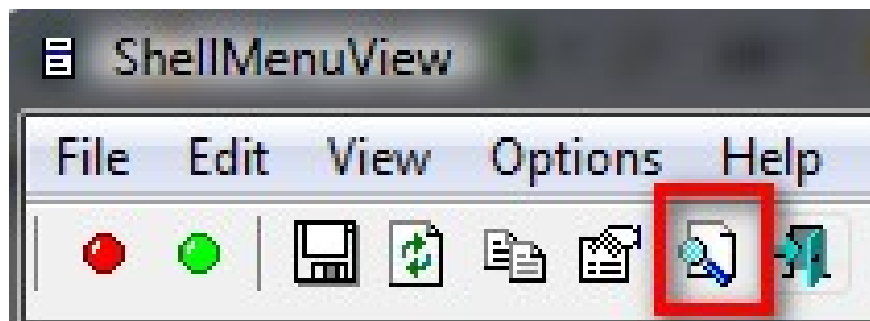
In the *Column Settings* window, select the columns you want to see. In this lesson we have selected the *Menu Name*, *Extensions*, *Menu Key*, *File Type* and *Disabled* columns.



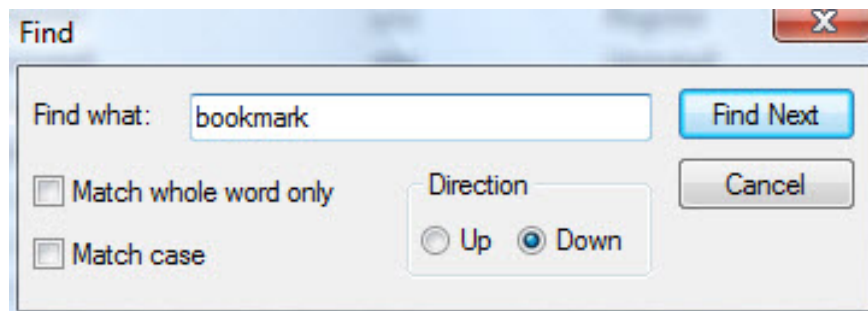
Now let's start an example with a typical right-click menu: as you can see, we have a lot of entries. For this article, I want to remove the 'Add to Winamp's Bookmark list' and 'Play in Winamp' options.



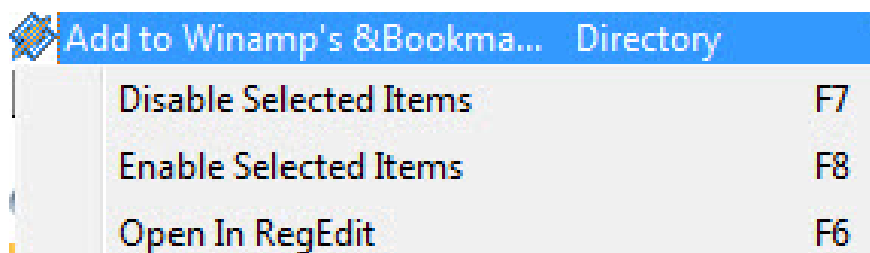
In the *ShellMenuView* window, click the *Find* icon from the toolbar or use the keyboard shortcut '*Ctrl + F*' .



Type in the name of the entry you want to delete and click 'Find Next' . In our case, we searched the word *bookmark* .



Right-click the found entry and select *Disable Selected Item* .



Repeat this procedure until you disable all entries.

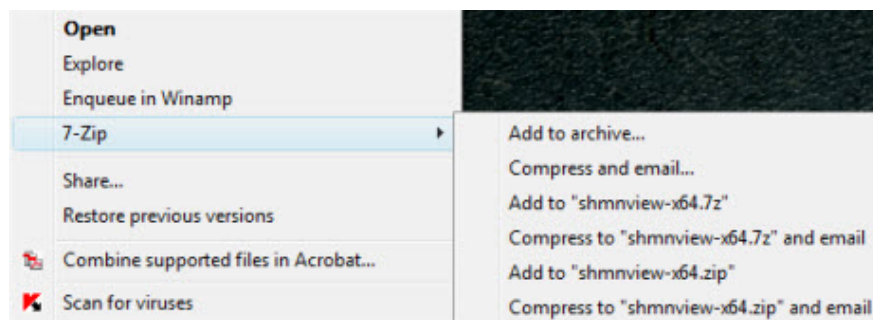
An easier method is to sort the first column, then use the *Find* option. When it finds the first entry you can easily select all of them and right click on *Disable Selected Items* .

Menu Name	Extensions	Menu Key	File Type	Disabled	
&Play in Winamp	.MP4	Play	Winamp.File.MP4	Yes	
&Play in Winamp	.mpeg	Play	Winamp.File.MPEG	Yes	
&Play in Winamp	.mpg	Play	Winamp.File.MPG	Yes	
&Play in Winamp	.mtrn	Play	Winamp.File.mtrn	Yes	
&Play in Winamp	.NSA	Play	Winamp.File.NSA	Yes	
&Play in Winamp	.nrt	Play	Winamp.File.nrt	Yes	
&Play in Winamp	.NSV	Play	Disable Selected Items	F7	Yes
&Play in Winamp	.OGG	Play	Enable Selected Items	F8	Yes
&Play in Winamp	.okt	Play	Open In RegEdit	F6	Yes
&Play in Winamp	.paf	Play	Save Selected Items	Ctrl+S	Yes
&Play in Winamp	.ptm	Play	Copy Selected Items	Ctrl+C	Yes
&Play in Winamp	.pvf	Play	HTML Report - All Items		Yes
&Play in Winamp	.rsw	Play	HTML Report - Selected Items		Yes
&Play in Winamp	.rmi	Play	Choose Columns		Yes
&Play in Winamp	.s3m	Play	Auto Size Columns	Ctrl+Plus	Yes
&Play in Winamp	.s3z	Play	Properties	Alt+Enter	Yes
&Play in Winamp	.sd2	Play	Refresh	F5	Yes
&Play in Winamp	.sds	Play			Yes
&Play in Winamp	.sf	Play			Yes
&Play in Winamp	.stm	Play			Yes
&Play in Winamp	.stz	Play			Yes

The items you disable will have a gray background color and in the *Disabled* column, it will be *Yes* .

How to work with ShellExView

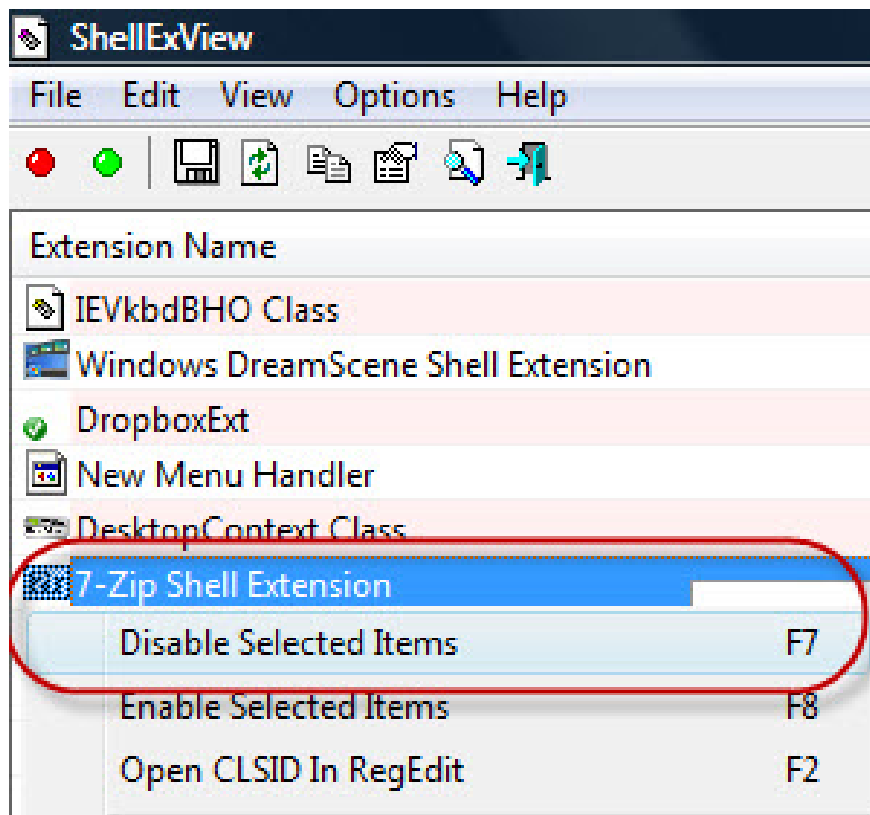
With this tutorial, we will use *ShellExView* to disable the *7-Zip* program's right-click menu.



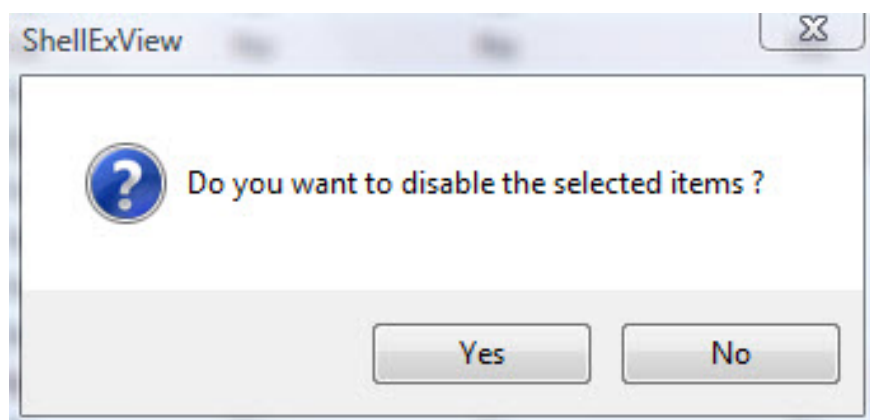
Note: *ShellExView* has an interface similar to ShellMenuView. Therefore, the displayed columns can be customized with the procedure described above for ShellMenuView. In addition, the Find button is similar.

When you enter the *ShellExView* window, sort the first column, find the entries you want to disable and select them. Then right-click and select *Disable Selected Items* .

In the picture below, we selected the *7-Zip Shell Extension* , right-clicked it and selected *Disable Selected Items*.



Click *Yes* when you are asked if you want to disable the selected items.



How to work with FileMenu tools































FileMenu Tools is an application that allows you to customize the right-click menu by adding the commands you want. It can also be used to edit the 'Send to' menu .

You can also use this application for editing commands (enabled or disabled) added by other applications to the right-click menu, but *ShellMenuView* and *ShellExView* seem to do better than that.

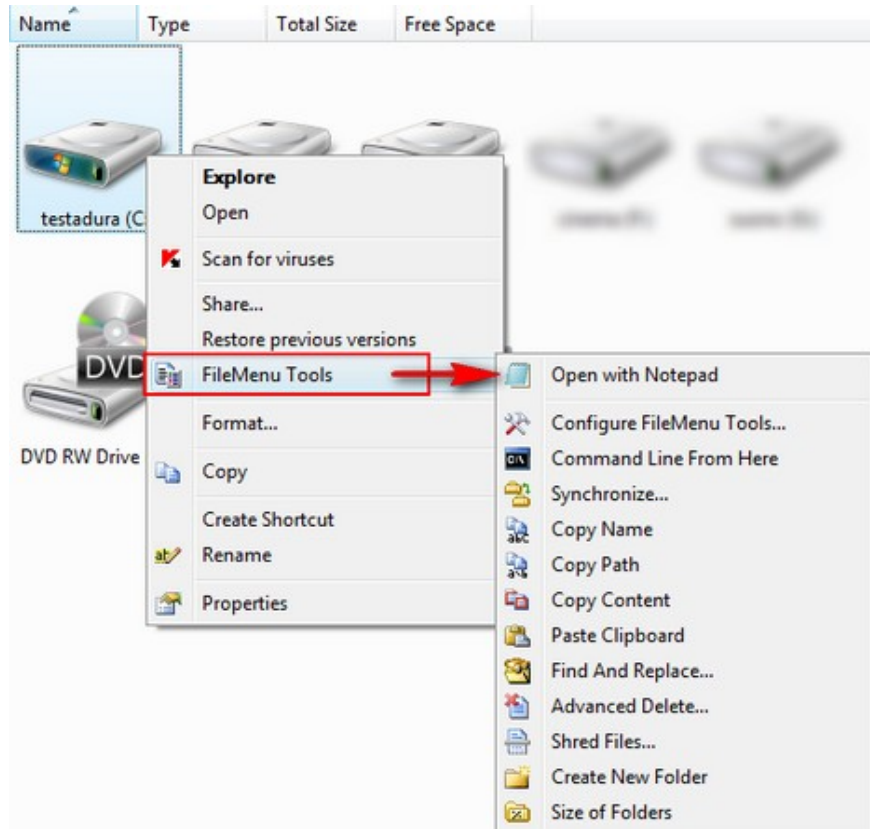
FileMenu Tools interface has three tabs: *Commands of FileMenu Tools*, *Send To menu* and *Commands of other applications*.

The first tab allows you to add commands to the right-click menu.

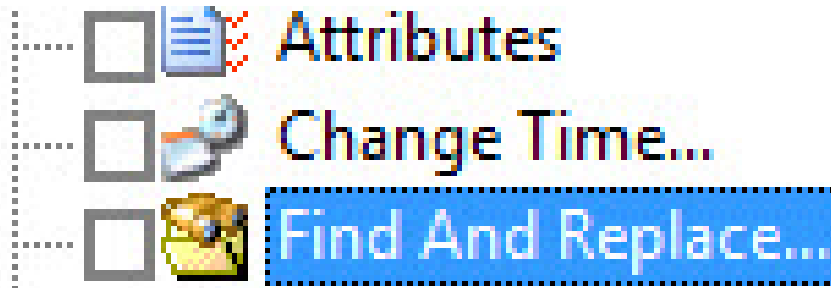
Commands of FileMenu Tools

-  Open with Notepad
-
-  Configure FileMenu Tools...
-  Run With Parameters...
-  Command Line From Here
-  Copy To...
-  Move To...
-  Duplicate Files
-  Pack to Folder
-  Synchronize...
-  Copy Name
-  Copy Path
-  Copy Content
-  Paste Clipboard
-  Attributes
-  Change Time...
-  Find And Replace...
-  Advanced Renamer...
-  Advanced Delete...
-  Delete and no Move to Recycle Bin
-  Delete Locked File
-  Shred Files...
-  Create New Folder
-  Split File...
-  Join Parts
-  Register DLL
-  Unregister DLL
-  Change Icon...
-  Size of Folders
-  Send to mail recipient
-  Send to mail recipient

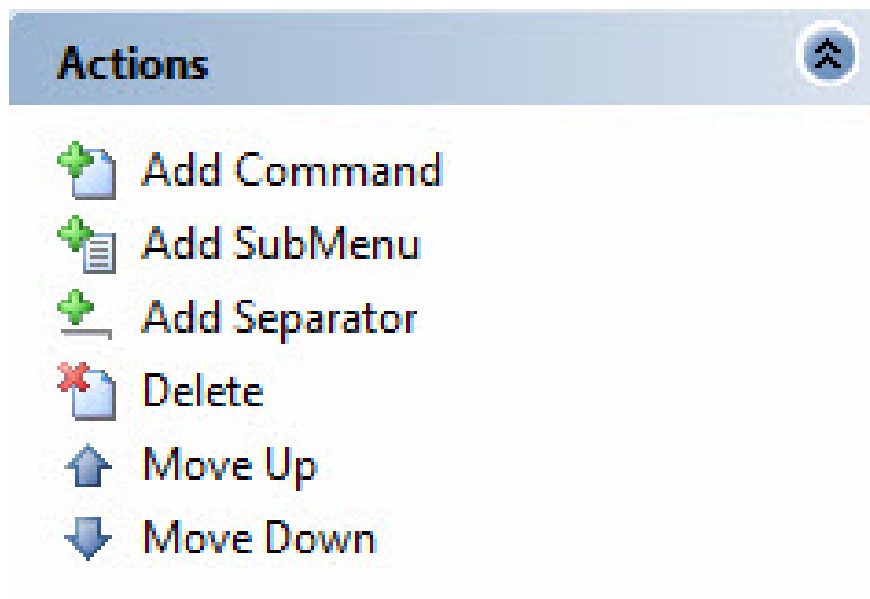
They will display all under the *File Menu Tools* folder in the right-click menu.



FileMenu Tools has many predefined commands. You can remove any command from the right-click menu by unchecking them.



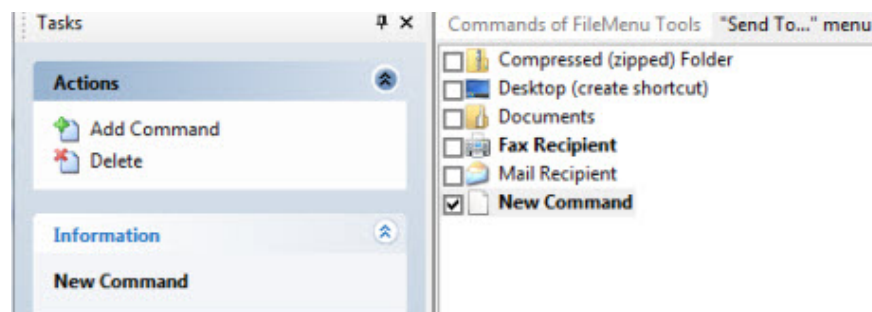
If you want to add a command, a low-level or separate menu, click the corresponding button in the *Actions* panel



After you have added a new command, you can choose what type of command you want: *Run a program* , *Copy to a folder* , *Move to a folder* , *Delete các t?p tin* , *Send to mail recipient* . You will then have to select the application that will execute the specific command and provide all the necessary arguments.

General	
Action	Run program
Menu Text	New Command
Description	
Icon	
Element Types	Files(*), Folders, Drives
<input type="checkbox"/> Files	Yes
Extensions	*
Folders	Yes
<input type="checkbox"/> Drives	Yes
Drive Types	All
Only an element	No
Program Properties	
Program	
Arguments	
Working Folder	
Several Instances	No

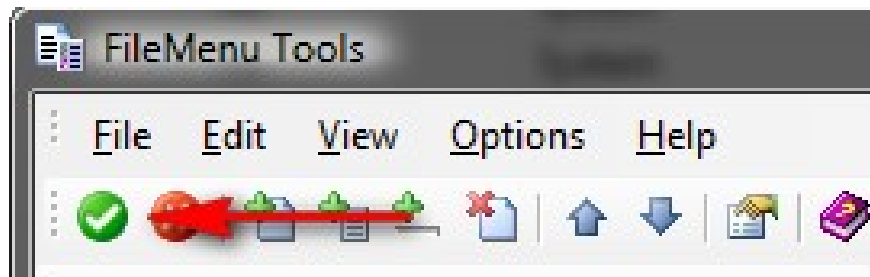
The second tab allows you to add or remove commands from the *Send To* right-click menu such as *compressed (zipped) Folder* , *Desktop (create shortcut)* , *Documents* , *Fax Recipient* , *Mail recipient* .



The process of removing or adding a new command to *Send to menu* is completely similar to the process described above for the *Commands of FileMenu Tools* tab.

Note: Once you have made all the desired changes, click the '*Apply Changes*' button. If you don't do that, you won't see a difference in the right-click menu. Alternatively, you can click on the *File* menu and select '*Apply*'

Changes'.



Conclude

Although there is no tool that just lets you delete and add new functions to the right-click menu. However, *ShellMenuView*, *ShellExView* and *FileMenu Tools* can help you accomplish those tasks quickly and get the right-click menu your way.

You finished reading the article "**How to delete and improve the right-click menu**" edited by the [TipsMake](#) team. We hope this article has provided you with many useful tech tips and tricks. You can search for similar articles on tips and guides. Thank you for reading and for following us regularly.