

# How to Customize Ubuntu 23.04 to Look Like macOS

Ubuntu 23.04 Lunar Lobster, released in April 2023, brings many interesting features. Despite stiff competition from operating systems like macOS and Windows, Ubuntu still manages to create a niche for itself in the market.

If you're an Ubuntu fan fascinated by the layout of macOS, you can customize the look and feel of your Ubuntu 23.04 desktop. With these basic but effective methods, you can make Ubuntu look like macOS.

So let's start customizing your Ubuntu 23.04 desktop so it looks like macOS.

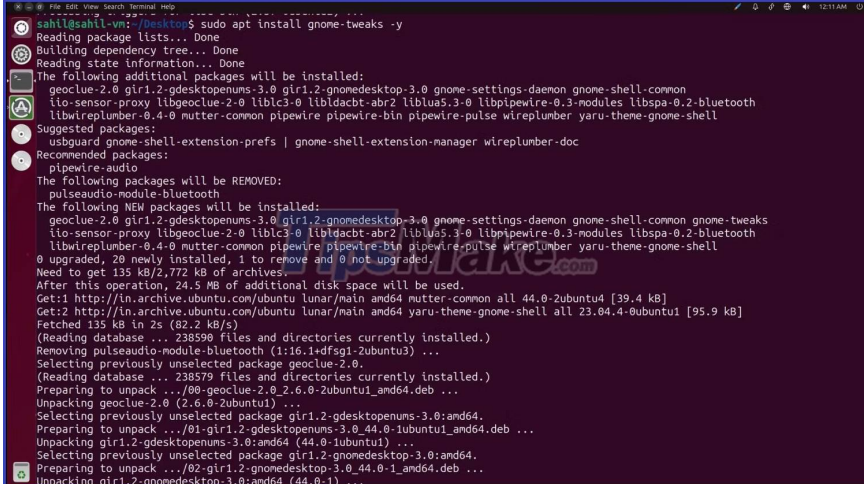
## Step 1: Get Started with the GNOME Tweaks Tool

The GNOME Tweaks tool is an integral part of the entire changeover process, allowing you to easily customize your themes and icons once installed.

To install GNOME Tweaks, start your Ubuntu terminal with the keyboard shortcut **Ctrl + Alt + T**.

Enter the following command to install tweaks:

```
sudo apt install gnome-tweaks -y
```



```
sahil@sahil-ppc: ~$ sudo apt install gnome-tweaks -y
Reading package lists... Done
Building dependency tree... Done
Reading state information... Done

The following additional packages will be installed:
  geoclue-2.0 gir1.2-gdesktopenums-3.0 gir1.2-gnomedesktop-3.0 gnome-settings-daemon gnome-shell-common
  iio-sensor-proxy libgeoclue-2.0 libic3-0 libldacbt-abr2 liblua5.3-0 libpipewire-0.3-modules libspa-0.2-bluetooth
  libwireplumber-0.4-0 mutter-common pipewire pipewire-bin pipewire-pulse wireplumber yaru-theme-gnome-shell
Suggested packages:
  usbguard gnome-shell-extension-prefs | gnome-shell-extension-manager wireplumber-doc
Recommended packages:
  pipewire-audio
The following packages will be REMOVED:
  pulseaudio-module-bluetooth
The following NEW packages will be installed:
  geoclue-2.0 gir1.2-gdesktopenums-3.0 gir1.2-gnomedesktop-3.0 gnome-settings-daemon gnome-shell-common gnome-tweaks
  iio-sensor-proxy libgeoclue-2.0 libic3-0 libldacbt-abr2 liblua5.3-0 libpipewire-0.3-modules libspa-0.2-bluetooth
  libwireplumber-0.4-0 mutter-common pipewire pipewire-bin pipewire-pulse wireplumber yaru-theme-gnome-shell
0 upgraded, 20 newly installed, 1 to remove and 0 not upgraded.
Need to get 135 kB/2,772 kB of archives.
After this operation, 24.5 MB of additional disk space will be used.
Get:1 http://in.archive.ubuntu.com/ubuntu lunar/main amd64 mutter-common all 44.0-2ubuntu4 [39.4 kB]
Get:2 http://in.archive.ubuntu.com/ubuntu lunar/main amd64 yaru-theme-gnome-shell all 23.04.4-0ubuntu1 [95.9 kB]
Fetched 135 kB in 2s (82.2 kB/s)
(Reading database ... 238598 files and directories currently installed.)
Removing pulseaudio-module-bluetooth (1:16.1-dfsg1-2ubuntu3) ...
Selecting previously unselected package geoclue-2.0.
(Reading database ... 238579 files and directories currently installed.)
Preparing to unpack .../00-geoclue-2.0-2.6.0-2ubuntu1 amd64.deb ...
Unpacking geoclue-2.0 (2.6.0-2ubuntu1) ...
Selecting previously unselected package gir1.2-gdesktopenums-3.0:amd64.
Preparing to unpack .../01-gir1.2-gdesktopenums-3.0_44.0-1ubuntu1 amd64.deb ...
Unpacking gir1.2-gdesktopenums-3.0:amd64 (44.0-1ubuntu1) ...
Selecting previously unselected package gir1.2-gnomedesktop-3.0:amd64.
Preparing to unpack .../02-gir1.2-gnomedesktop-3.0_44.0-1 amd64.deb ...
Unpacking gir1.2-gnomedesktop-3.0:amd64 (44.0-1) ...
```

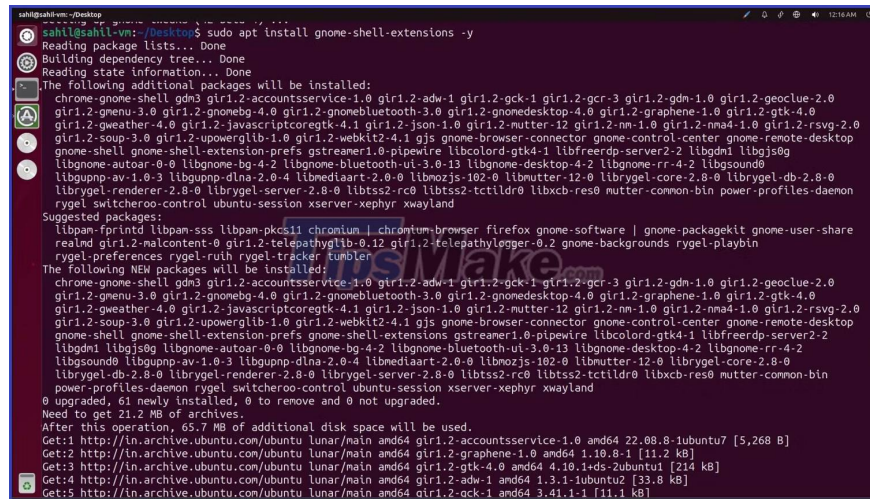
## Step 2: Use GNOME Shell Extensions

Once you've installed the GNOME Tweaks tool, it's time to install the GNOME Shell Extensions so you can literally manipulate and make changes to the look and feel of your desktop. The Extensions application allows

you to install and activate user-defined themes on your machine.

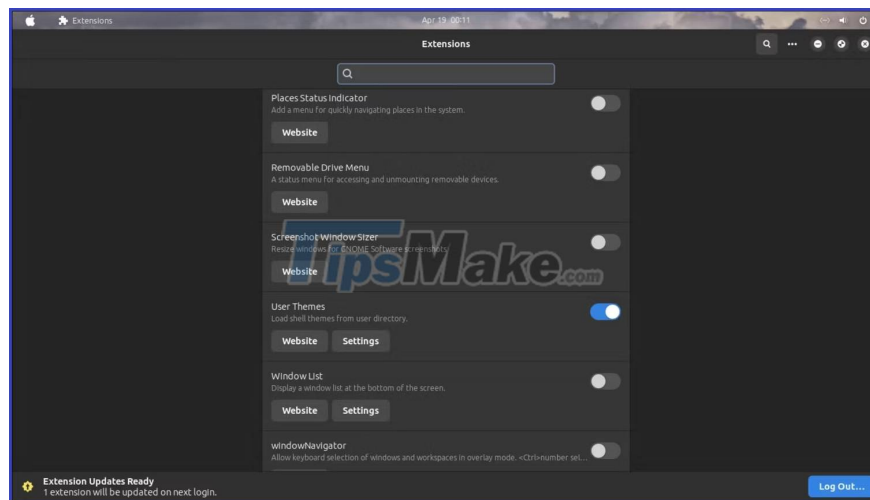
In the terminal, enter the following command:

```
sudo apt install gnome-shell-extensions -y
```



```
sahil@kali:~$ sudo apt install gnome-shell-extensions -y
Reading package lists... Done
Building dependency tree... Done
Reading state information... Done
The following additional packages will be installed:
  chrome-gnome-shell gdm3 gir1.2-accountsservice-1.0 gir1.2-adv-1 gir1.2-gck-1 gir1.2-gcr-3 gir1.2-gdm-1.0 gir1.2-geoclue-2.0
  gir1.2-gmenu-3.0 gir1.2-gnomebg-4.0 gir1.2-gnomebluetooth-3.0 gir1.2-gnomedesktop-4.0 gir1.2-graphene-1.0 gir1.2-gtk-4.0
  gir1.2-gweather-4.0 gir1.2-javascriptcoregtk-4.1 gir1.2-json-1.0 gir1.2-mutter-12 gir1.2-nm-1.0 gir1.2-nma4-1.0 gir1.2-rsvg-2.0
  gir1.2-soup-3.0 gir1.2-upowerglib-1.0 gir1.2-webkit2-4.1 gjs gnome-browser-connector gnome-control-center gnome-remote-desktop
  gnome-shell gnome-shell-extension-prefs gstreamer1.0-pipewire libcolord-gtk4-1 libfreerdp-server-2-2 libgdm1 libgjs0g
  libgnome-autoar-0-0 libgnome-bluetooth-3.0-13 libgnome-desktop-4-2 libgnome-rr-4-2 libgsound0
  libgupnp-av-1.0-3 libgupnp-dlna-2.0-4 libmediaart-2.0-0 libmozjs-102-0 libmutter-12-0 librygel-core-2.8-0 librygel-dbus-2.8-0
  librygel-renderer-2.8-0 librygel-server-2.8-0 libtss2-rc0 libtss2-tctildr0 libxcb-res0 mutter-common-bin power-profiles-daemon
  rygel switcheroo-control ubuntu-session xserver-xephyr xwayland
Suggested packages:
  libpan-fprintd libpan-sss libpan-pkcs11 chromium | chromium-browser firefox gnome-software | gnome-packagekit gnome-user-share
  realmd gir1.2-malcontent-0 gir1.2-telepathylib-0.12 gir1.2-telepathylogger-0.2 gnome-backgrounds rygel-playbin
  rygel-preferences rygel-ruth rygel-tracker tumbler
The following NEW packages will be installed:
  chrome-gnome-shell gdm3 gir1.2-accountsservice-1.0 gir1.2-adv-1 gir1.2-gck-1 gir1.2-gcr-3 gir1.2-gdm-1.0 gir1.2-geoclue-2.0
  gir1.2-gmenu-3.0 gir1.2-gnomebg-4.0 gir1.2-gnomebluetooth-3.0 gir1.2-gnomedesktop-4.0 gir1.2-graphene-1.0 gir1.2-gtk-4.0
  gir1.2-gweather-4.0 gir1.2-javascriptcoregtk-4.1 gir1.2-json-1.0 gir1.2-mutter-12 gir1.2-nm-1.0 gir1.2-nma4-1.0 gir1.2-rsvg-2.0
  gir1.2-soup-3.0 gir1.2-upowerglib-1.0 gir1.2-webkit2-4.1 gjs gnome-browser-connector gnome-control-center gnome-remote-desktop
  gnome-shell gnome-shell-extension-prefs gstreamer1.0-pipewire libcolord-gtk4-1 libfreerdp-server-2-2 libgdm1 libgjs0g
  libgnome-autoar-0-0 libgnome-bluetooth-3.0-13 libgnome-desktop-4-2 libgnome-rr-4-2 libgsound0 libgupnp-av-1.0-3 libgupnp-dlna-2.0-4
  libmediaart-2.0-0 libmozjs-102-0 libmutter-12-0 librygel-core-2.8-0 librygel-dbus-2.8-0 librygel-renderer-2.8-0 librygel-server-2.8-0
  libtss2-rc0 libtss2-tctildr0 libxcb-res0 mutter-common-bin power-profiles-daemon rygel switcheroo-control ubuntu-session xserver-xephyr xwayland
0 upgraded, 61 newly installed, 0 to remove and 0 not upgraded.
Need to get 21.2 MB of archives.
After this operation, 65.7 MB of additional disk space will be used.
Get:1 http://in.archive.ubuntu.com/ubuntu lunar/main amd64 gir1.2-accountsservice-1.0 amd64 22.08.1ubuntu7 [5,268 B]
Get:2 http://in.archive.ubuntu.com/ubuntu lunar/main amd64 gir1.2-graphene-1.0 amd64 1.10.8-1 [11.2 kB]
Get:3 http://in.archive.ubuntu.com/ubuntu lunar/main amd64 gir1.2-gtk-4.0 amd64 4.10.14ds-2ubuntu1 [214 kB]
Get:4 http://in.archive.ubuntu.com/ubuntu lunar/main amd64 gir1.2-adv-1 amd64 1.3.1-1ubuntu2 [33.8 kB]
Get:5 http://in.archive.ubuntu.com/ubuntu lunar/main amd64 gir1.2-gck-1 amd64 3.41.1-1 [11.1 kB]
```

After installation, reboot the system for the changes to take effect. As soon as the system boots, type **Extensions** in the search bar. In the dialog, scroll down and enable the button next to **User Themes**.



With this option enabled, you can install new themes onto your Ubuntu 23.04 machine.

### Step 3: Download and install macOS themes

So far, you have installed all the prerequisites to activate the theme on your Ubuntu machine. With the basics done, it's time to move on to the fun part, i.e. downloading your favorite macOS themes.

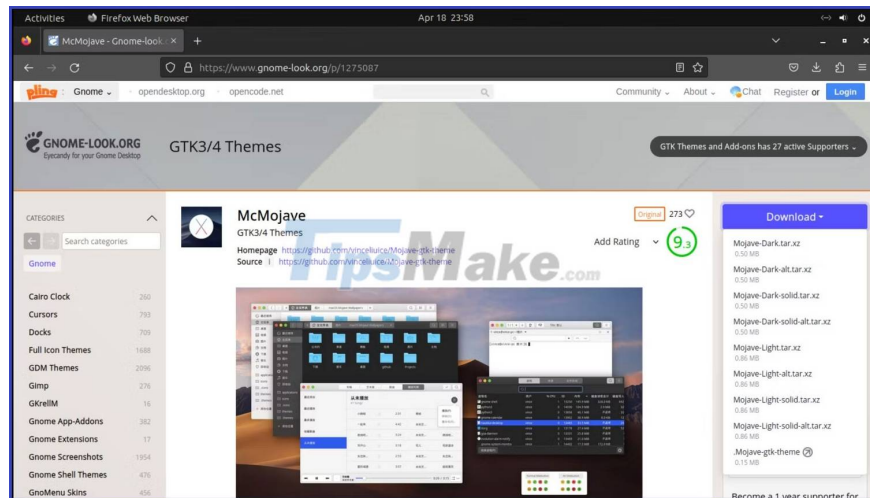
Visit [gnome-look.org](http://gnome-look.org) to search and download your favorite themes. To make your choice easier, here are some of the top options available for download:

1. OS Catalina

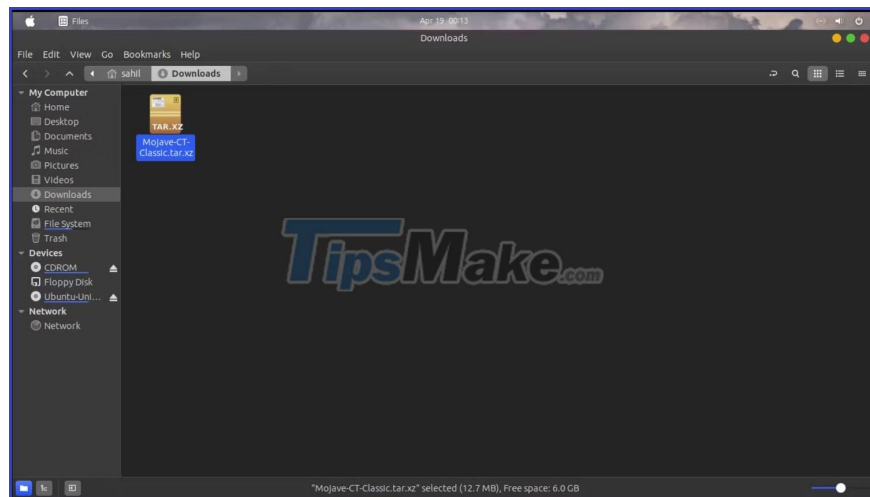
2. McMojave
3. WhiteSur Gtk Theme
4. McOS-Transparent

After choosing a theme, download the TAR.XZ file of that theme to your computer. The article will download the McMojave theme as a demo. McMojave is one of the most downloaded Ubuntu themes out there.

To install the Ubuntu theme, select the theme from the results and click the **Install button**.



Go to the **Downloads** folder and double-click the Mojave-CT-Classic.tar.xz file to access its contents.



Extract the content of the theme to the **.themes** folder in your home directory. If there is a **.themes** folder available, you can drag and drop the newly extracted Mojave-CT-Classic theme folder into it. If you don't have a folder yet, create it and then copy the theme folder into it.

## Step 4: Download and install macOS icons

Next, it's time to download the right icons to go with your Ubuntu macOS theme. Depending on the theme, Ubuntu 23.04 users can choose different theme icons for the desktop.

Since you have already downloaded the Mojave theme, you need to download the Mojave CT icons from the Store. The download process is the same as before. Extract the contents of the zipped folder to your home directory. This time, instead of copying the extracted folder to the .themes folder, you have to move it to the .icons folder.

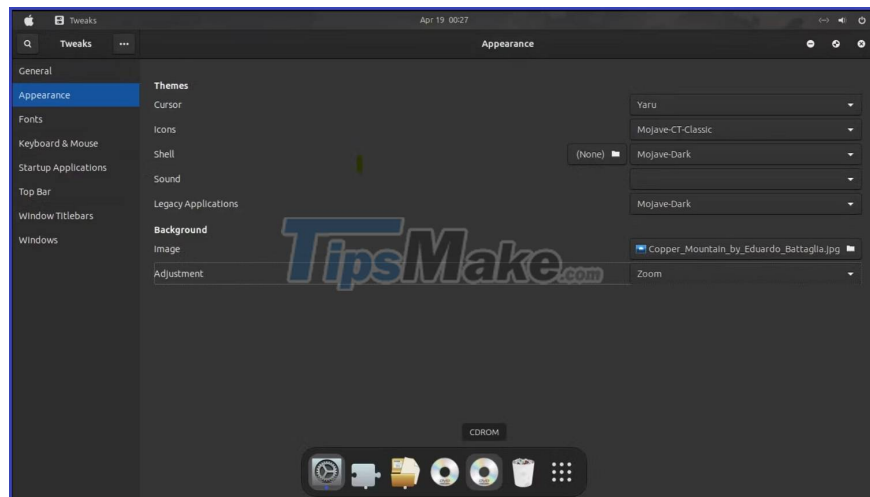
Like before, if the .icons folder doesn't exist, create it.

## Step 5: Use the GNOME Tweaks tool to make visual changes

With the theme and icon pack ready, open the GNOME Tweaks tool to set up the new theme and related settings.

Switch to the **Appearance** tab and in the **Icons** drop-down menu , select **Mojave-CT-Classic**. Select **Mojave-Dark** (or any other theme you downloaded) in the **Shell drop-down menu**.

Similarly, change the option to **Mojave-Dark** for **Legacy Applications**.

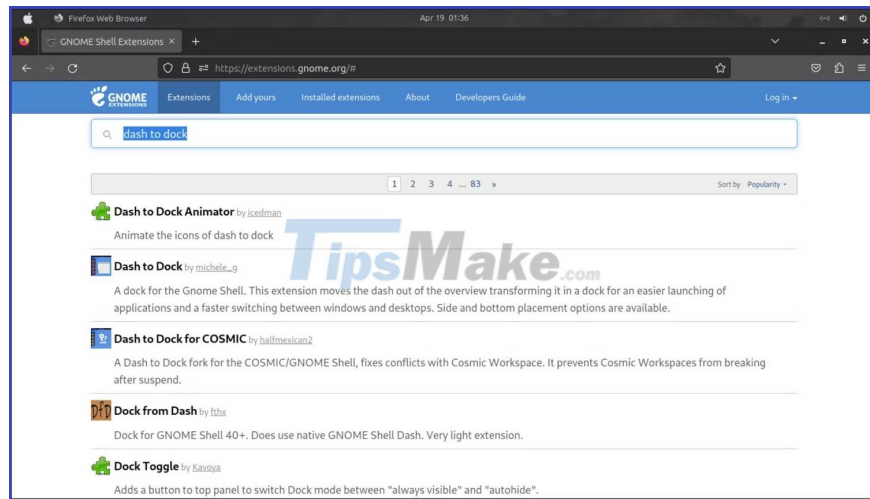


Let's add a few final options to your desktop.

## Step 6: Add Dash to Dock via extension

One of the best features of macOS is its dock, which stores all the apps in one place. You can add a similar tray to your Ubuntu desktop for a macOS-like look and feel.

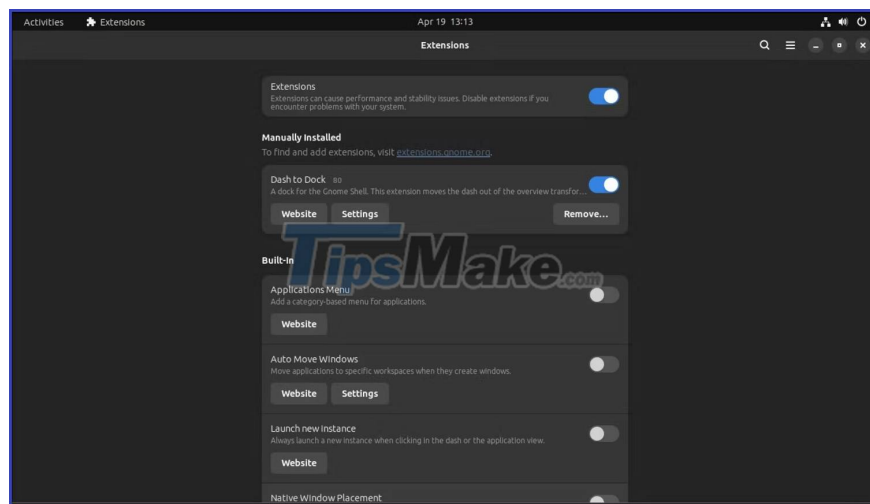
You have to go to [extension.gnome.org](https://extension.gnome.org) and click on the **Install browser extension** option . After installing the extension, search for the **Dash to Dock** option in the search bar. GNOME Extension Manager is a useful tool to manage all your downloaded extensions from one place.



Before continuing, you must restart your machine. After the system reboots, go to the **Extensions** toolbox . At the top, you'll find a new addition to Dash to Dock under the heading **Manually Installed**.

Toggle the side button to enable the extension. All your applications will be available in a dock on the desktop.

You can play around with the settings by clicking the **Settings** button . If you want to remove the dock tray extension, click the **Remove** button .



## Step 7: Finish with a suitable wallpaper

Now that your desktop looks like a neat copy of macOS, why not complete it with a fancy wallpaper? Open Settings, then the **Appearance** tab . Under the **Background** heading , click **Add Picture** . You can choose an image from the list of wallpapers or upload another image of your choice.

Your Ubuntu 23.04 Lunar Lobster installation should now resemble the macOS look and feel. You can customize your screen in a few simple steps to look like your favorite operating system.

You finished reading the article "**How to Customize Ubuntu 23.04 to Look Like macOS**" edited by the [TipsMake](#) team. We hope this article has provided you with many useful tech tips and tricks. You can search for similar articles on tips and guides. Thank you for reading and for following us regularly.

