

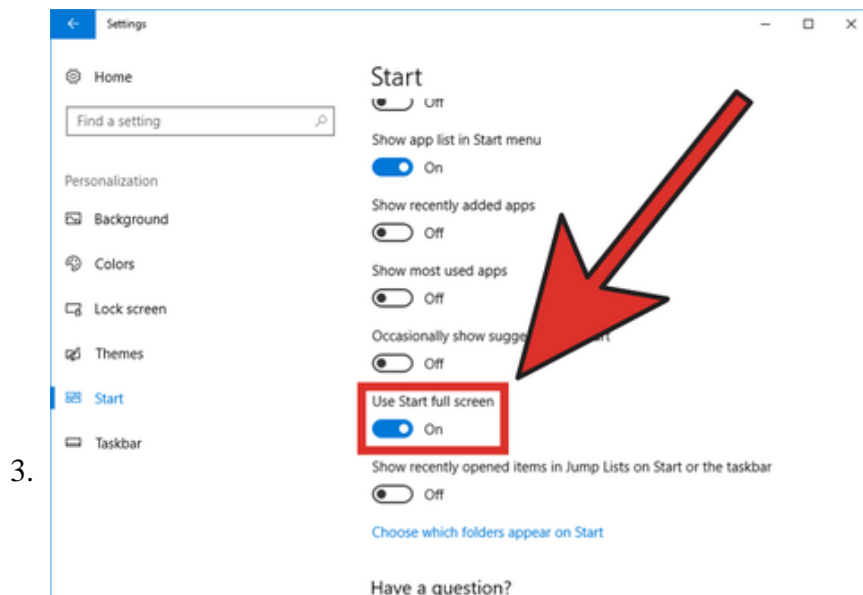
How to Customize the Windows 10 Start Menu

Windows 10 offers the most customizable Start menu in the entire history of the Windows operating system. From changing the color to choosing side folders and configuring tiles, there's so much that can be done to make it look less...

Method 1 of 3:

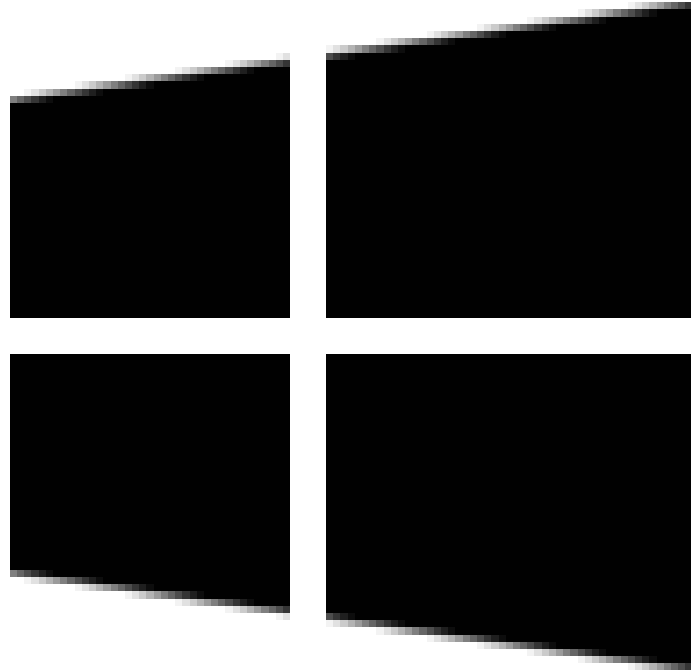
Adjusting the Size

1. **Make the Start menu taller.** Move your pointer to the upper edge of the Start menu that borders the background. Drag it up to make it taller, and performing the opposite (dragging down) will shorten it.
2. **Widen the Start menu.** Move your mouse to the outer side edge of the Start menu. Drag out to widen, and drag in to shrink.

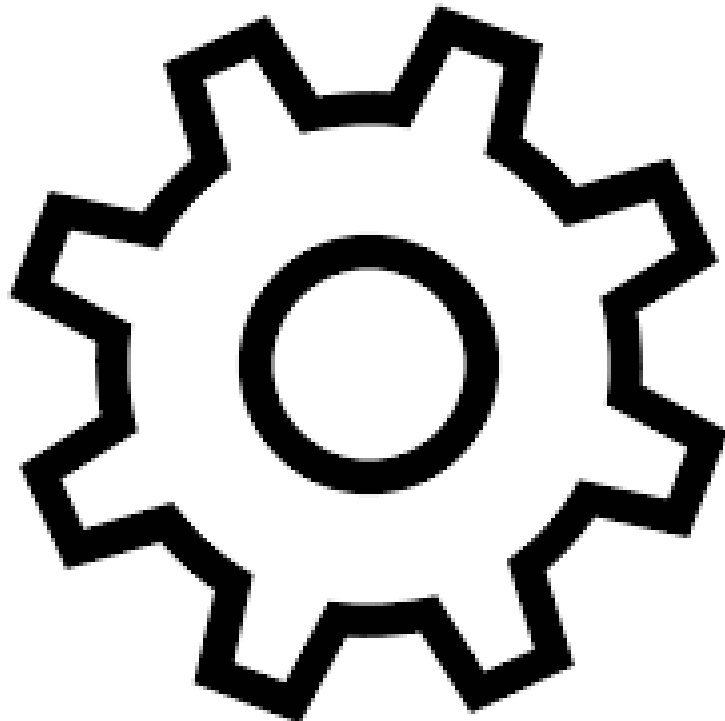


Enable the full screen Start menu. Similar to Windows 8's Start screen, Windows 10 provides the option to enable a modified full screen Start menu. To configure it, follow these steps:

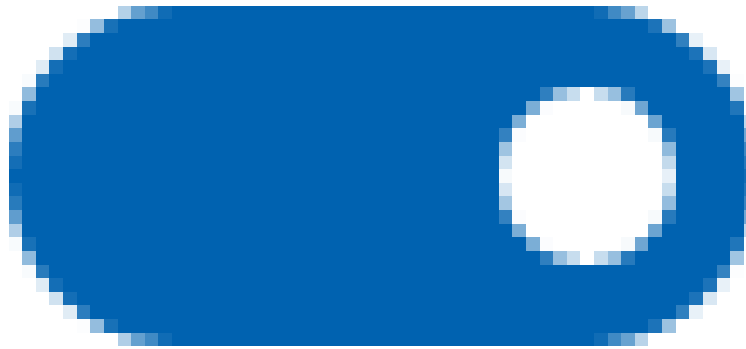
1. Go to Start



> Settings



> Personalization > Start and toggle on



- "Use Start full screen".
- 2. Tablet mode enables this by default.

Method 2 of 3:

Configuring App Tiles

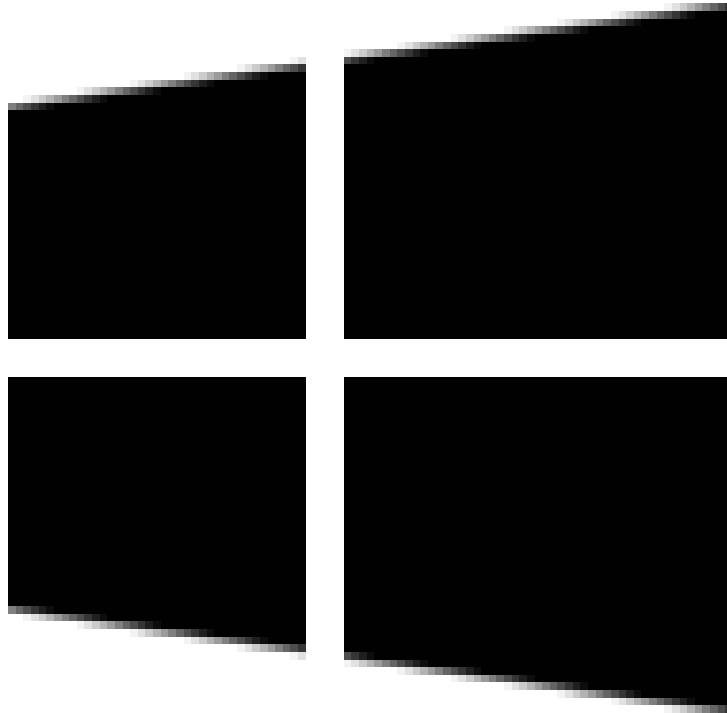
- Pin tiles to the Start menu.** Find an app from the "All apps" list and right-click on it. Select **Pin to Start** to pin a tile to the Start menu.
 - You can also do this from the search feature, right-clicking a result and selecting the same listing from the context menu.
- Unpin tiles.** Right-click on a tile and select **Unpin from Start**. The tile will be removed from the Start menu.
- Resize the app tiles.** To maintain a sleek and custom feel to your Start menu, you can adjust the tile size on the app tiles. Just right-click on a tile, hover over **Resize**, and select an option.
 - Different tiles will have different options, but they are generally small, medium, wide, and large. For example, desktop apps will usually have only two options, small and medium.
- Disable live tiles.** While live tiles can be very helpful in finding relevant information quickly (e.g. today's weather), you may not be a fan of them. Turning them off is super simple. Just right-click a tile, hover over **More**, and click **Turn Live Tile off**.
 - The process is identical for turning them back on. Just right-click, hover over **More**, and select **Turn Live Tile on**.

Method 3 of 3:

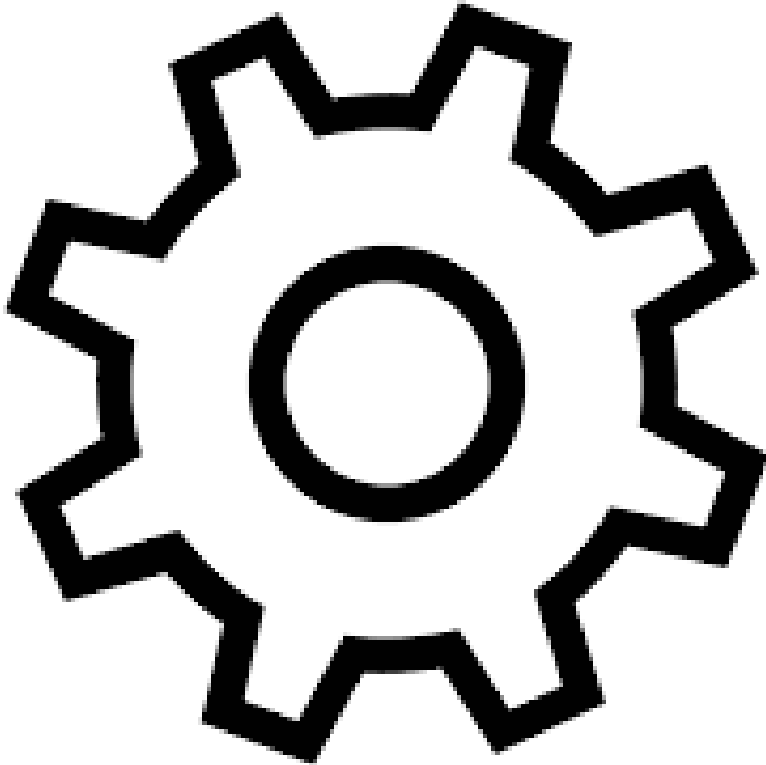
Configuring Side Folder Icons

This method will show you how to choose which icon shortcuts appear on the left side of the Start menu, such as the File Explorer and Settings icon. Keep in mind that the user account picture and power icon cannot be removed.

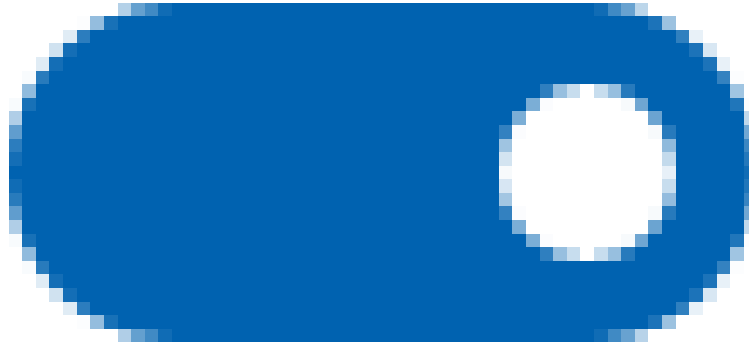
- Open the Settings app.** Click the Start



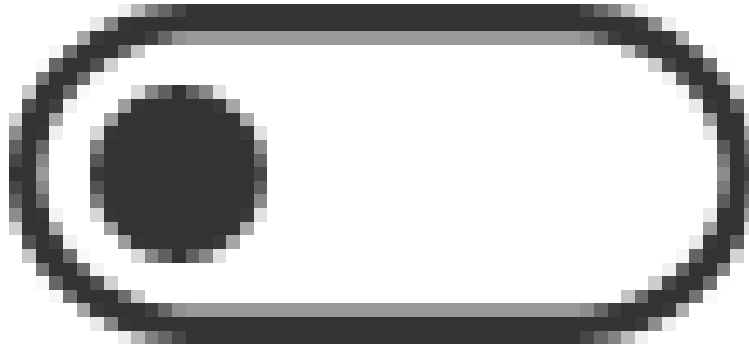
button and click the settings gear



2. Go to the **Personalization** category.
3. Click **Start** from the left pane.
4. Click "Choose which folders appear on Start". This will be at the bottom of the Start settings page.
5. **Configure which icons appear.** These will be a bunch of different options to choose from, including File Explorer, Settings, Documents, Downloads, Music, Pictures, Videos, HomeGroup, Network, and Personal folder.
 1. Toggle on



a switch under an item name to make the icon appear on Start. Oppositely, toggling off



an option will remove its icon from Start.

1. Basically: On = show, Off = hide

You finished reading the article "**How to Customize the Windows 10 Start Menu**" edited by the [TipsMake](#) team. We hope this article has provided you with many useful tech tips and tricks. You can search for similar articles on tips and guides. Thank you for reading and for following us regularly.