

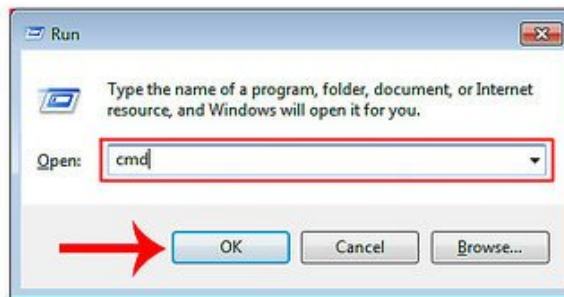
How to Customize the Font in Windows Command Prompt

Many people work regularly with the Windows command prompt. One of the main problems users encounter, however, is the difficulty of achieving the same look every time one works with the command prompt interface. This article is intended to...

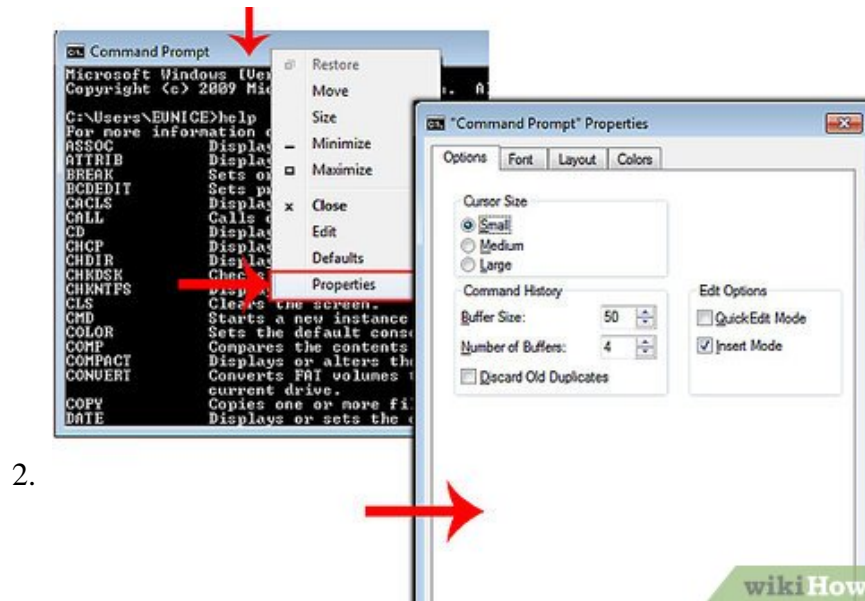
Part 1 of 2:

Changing the Colors and Fonts

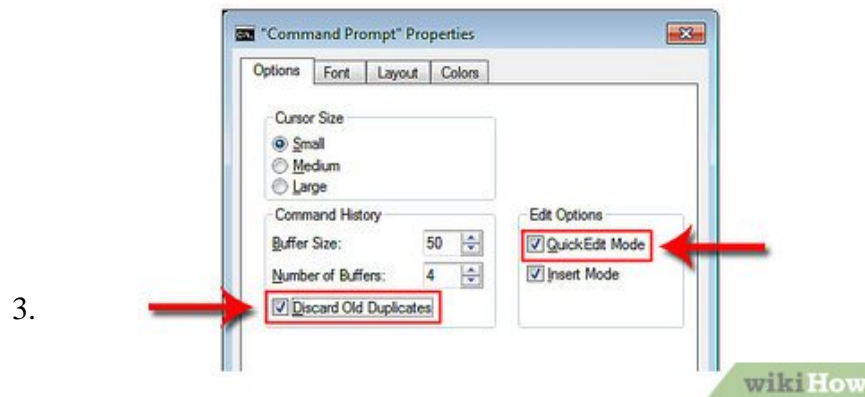
1.



To open *command prompt*, click "Start", "Run", type "cmd" (without the quotes) and press OK.



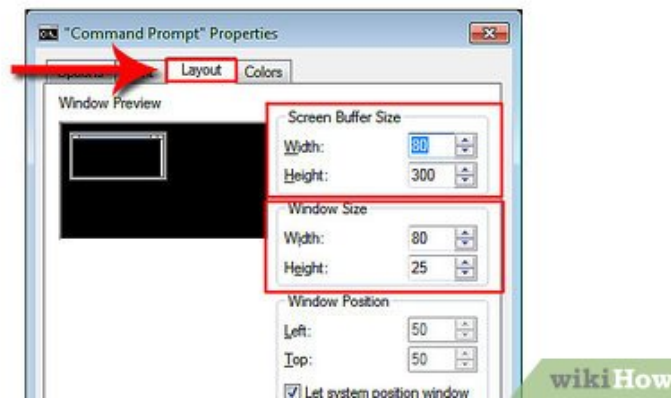
Right-click on the top (the title bar) of the *command prompt* window and select "Properties". You can also access the properties window by holding **ALT+SPACE+P**. Notice the four tabs at the top of the properties dialogue box: Options, Font, Layout, Colors.



When you open the "Options" tab, check "Quick Edit Mode". This will enable you to use the "copy and paste" function in the command prompt window.

1. It is also recommended that you select "Discard Old Duplicates".

4.

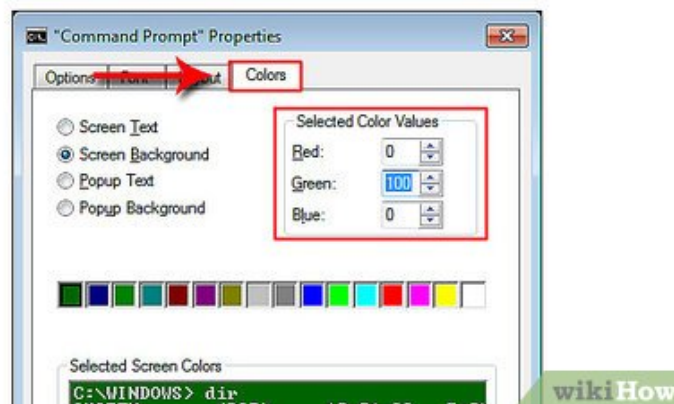


Click on the "Layout" Tab. You will see two sets of options: "**Window size**" and "**Screen buffer size**".

1. *Window size* controls the size of the window you're working with.
 2. *Screen buffer size* controls what's kept in your computer's buffer memory while you're running the command prompt, which can be up to 9999. It can be viewed using the scroll bar on the side of the window.
5. **Set a proper buffer size according to how much space you will need to keep at any given time.** A width of 80 and height of 300 is a common buffer size.

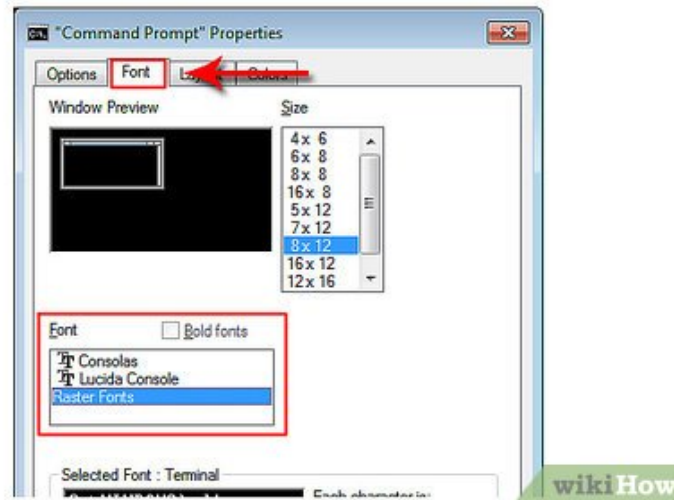


6.



Choose the color of your text, background screen, and pop-up windows by selecting the "Colors" tab. As you will see, there's an additional frame where you can edit the colors more specifically by their numeric values. For example, you can choose a darker green than you already have access to by plugging in: red:0, green:100, blue:0.

7.

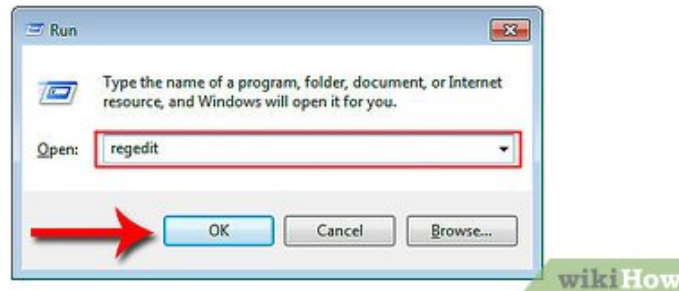


Open the "Font" tab. This is where you choose the font you would like to use. You will see two fonts: *Raster fonts* (as default) and *Lucida Console*. With this initial step, however, you only have these two fonts available to you. But don't worry, the next step allows you to add new fonts.

Part 2 of 2:

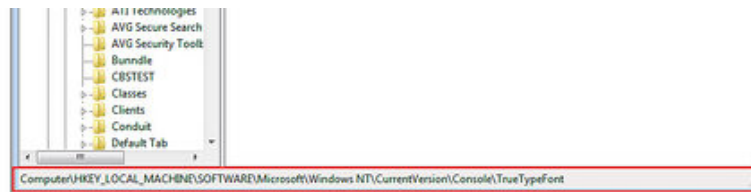
Adding New Fonts

1.

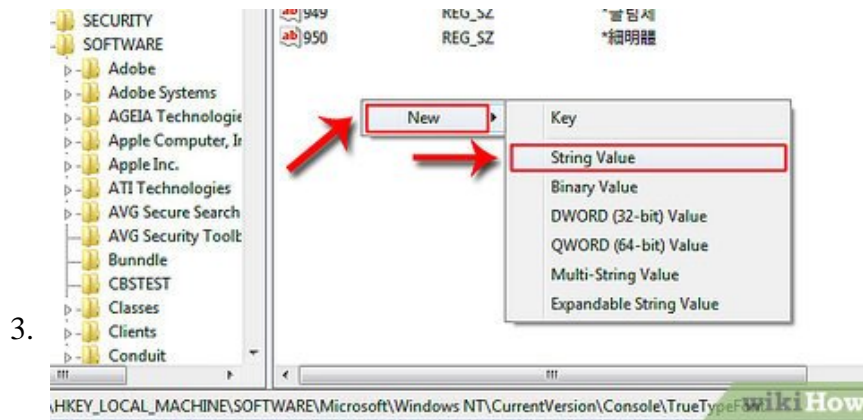


To add new fonts, click "Start", "Run" and type "regedit" (without the quotes). Press OK.

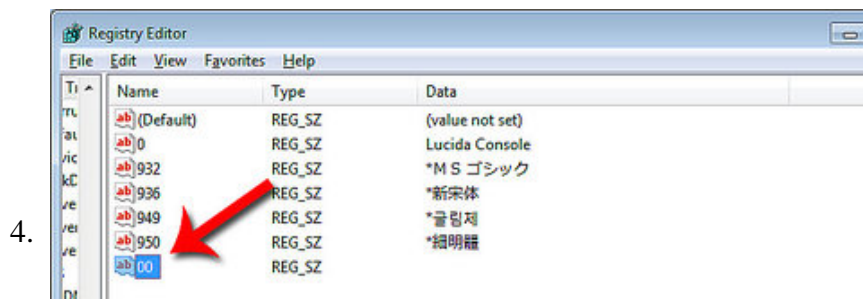
2.



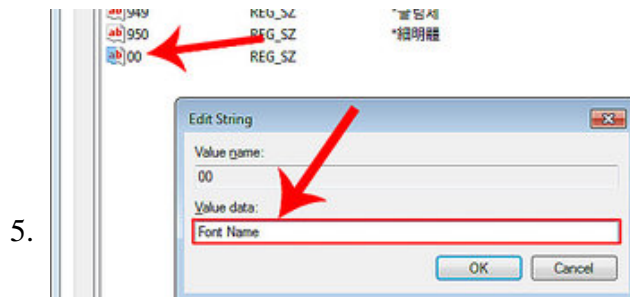
Go to this key: "HKEY_LOCAL_MACHINESOFTWAREMicrosoftWindows NTCurrentVersionConsoleTrueTypeFont".



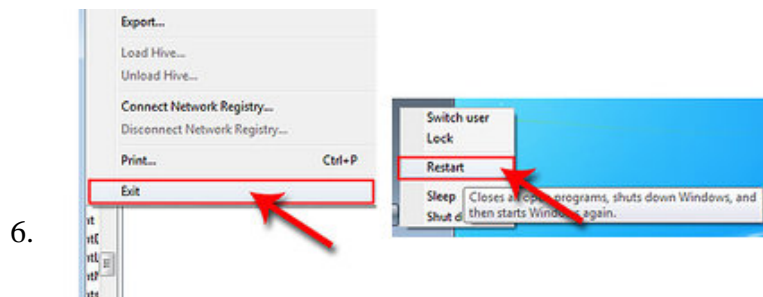
Before you proceed please take a look at the "Warnings" section below. Right-click on "TrueTypeFont" key, click "New" and then click "String Value".



Enter "00" (without the quotes) as the name of the new *value* you just created. For the next values, just enter a "0" each time. For example, the third value should be named "000" and so on. Please note that you have to name them exactly as shown; otherwise, the function won't work.

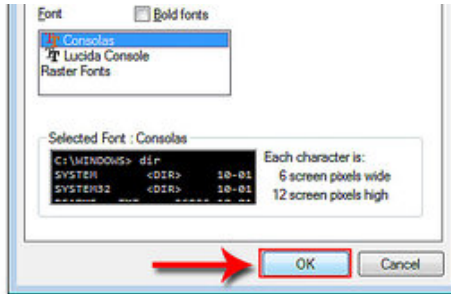


Now, double-click on the value you created and write the font name in the "value data" bar (for example, "courier new").



Close "Registry Editor" and reboot your computer. You should be able to see the new font(s) under the "Font" tab in the properties window the next time you run command prompt.

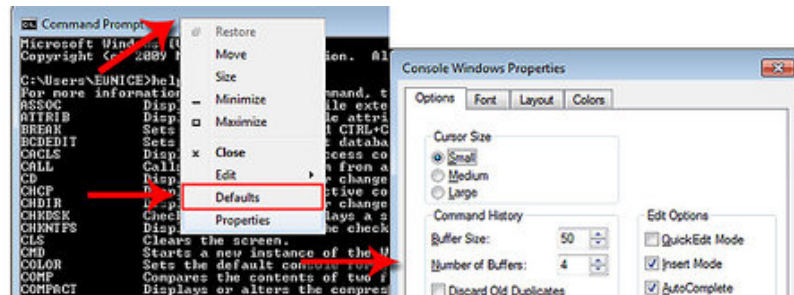
7.



To save changes, after you press "OK" in the properties window, choose one of the following options:

1. "Apply properties to current window only". This means that all changes will be gone as soon as you close the current command prompt.
2. "Save properties for future windows with same title". Selecting this option will save your changes for all command prompt windows *running from the same shortcut*. In other words, this is the proper option to set the properties for this specific shortcut.

8.



Right-click on the top of the command prompt window (the title bar) and click "Defaults", which will give you have access to a window like the properties window. Using this window, however, will affect *every* command prompt, no matter where it's running from.

You finished reading the article "**How to Customize the Font in Windows Command Prompt**" edited by the [TipsMake](#) team. We hope this article has provided you with many useful tech tips and tricks. You can search for similar articles on tips and guides. Thank you for reading and for following us regularly.