

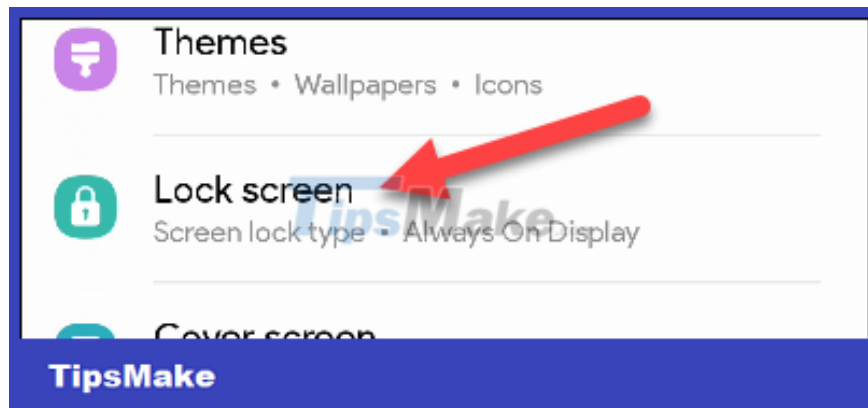
How to customize the Always On Display screen on Samsung Galaxy phones

If you don't like or don't want to have to shell out your wallet for a smartwatch, the 'Always On Display' feature on Samsung Galaxy smartphones is a great alternative.

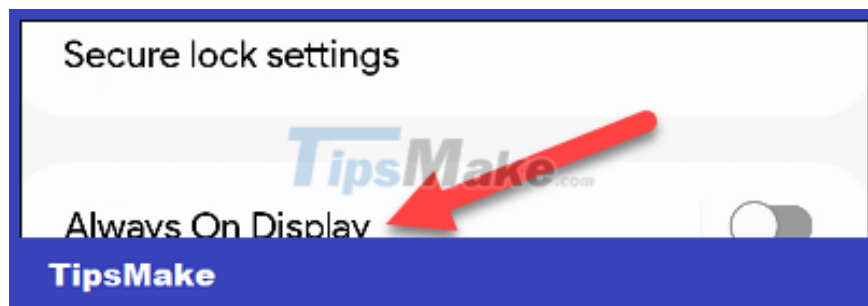
By default, the Always On Display screen displays the time, date, battery percentage, and system notifications. However, to make things even more convenient, you can also fully customize what information is displayed in Always On Display mode. Find out how to do it right here.

Enable Always On Display on Samsung phones

First, turn on the Always On Display feature, click the Settings gear icon on the main screen, then tap the 'Lock Screen' item.

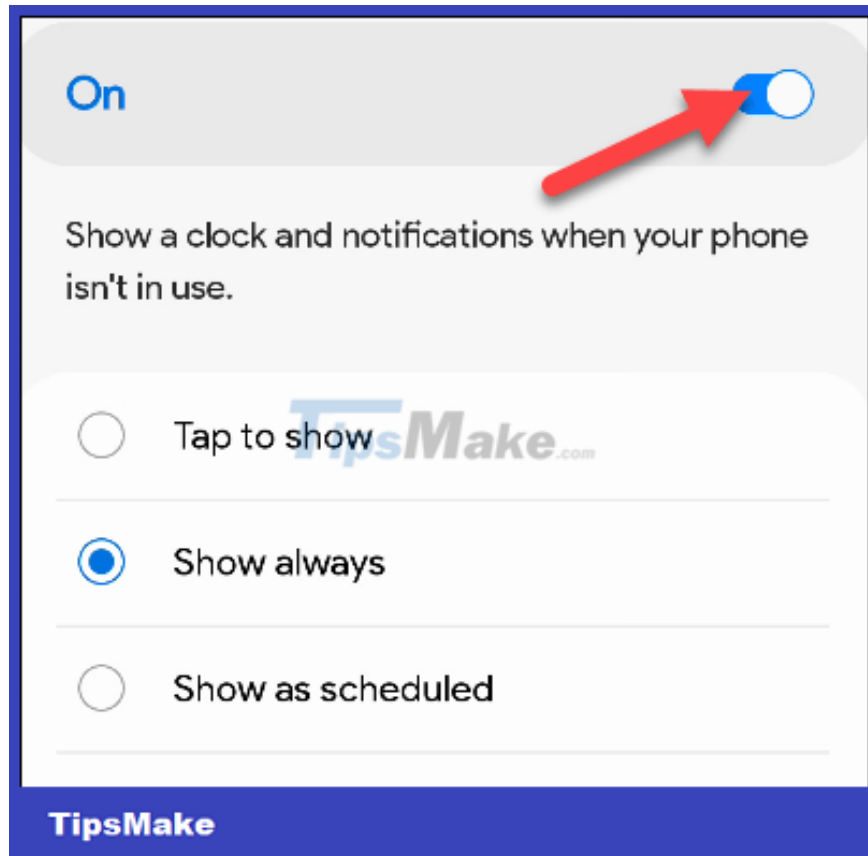


Next, click 'Always On Display'. If you don't see this here, your device doesn't currently support the feature.



Turn on the Always On Display enable switch and choose how you want to use the feature. There will be 4 options as follows:

1. **Tap to Show** : Tap the phone screen once to see the Always On Display.
2. **Show Always** : Always On Display is enabled whenever the phone is idle.
3. **Show as Schedule** : Create a schedule to enable Always On Display, you can choose the start and end time to apply for each day.
4. **Show for New Notifications** : Always On Display turns on when you have a notification.



You have successfully enabled the Always On Display feature, now it's time to customize it further.

Customize the Always On Display

Still in the Always On Display settings (**Settings > Lock screen > Always On Display**), scroll down and select ' **Clock Style** '.

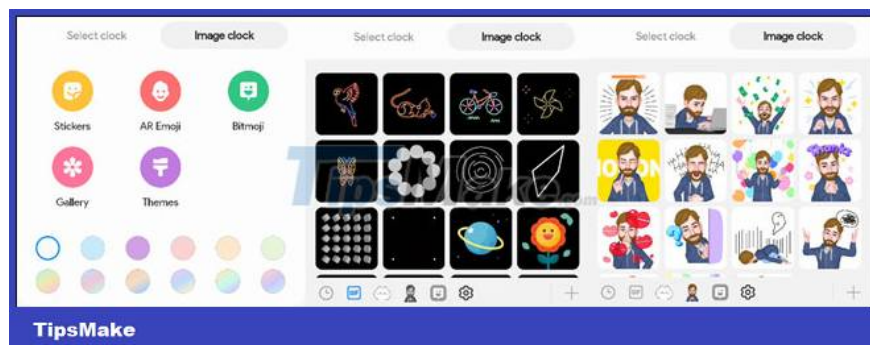


There are two clock styles to choose from — digital/basic or ' **Image Clocks** '. The first group is pretty simple, you can choose a design and then tweak the colors. Tap the ellipsis to see more watch styles.

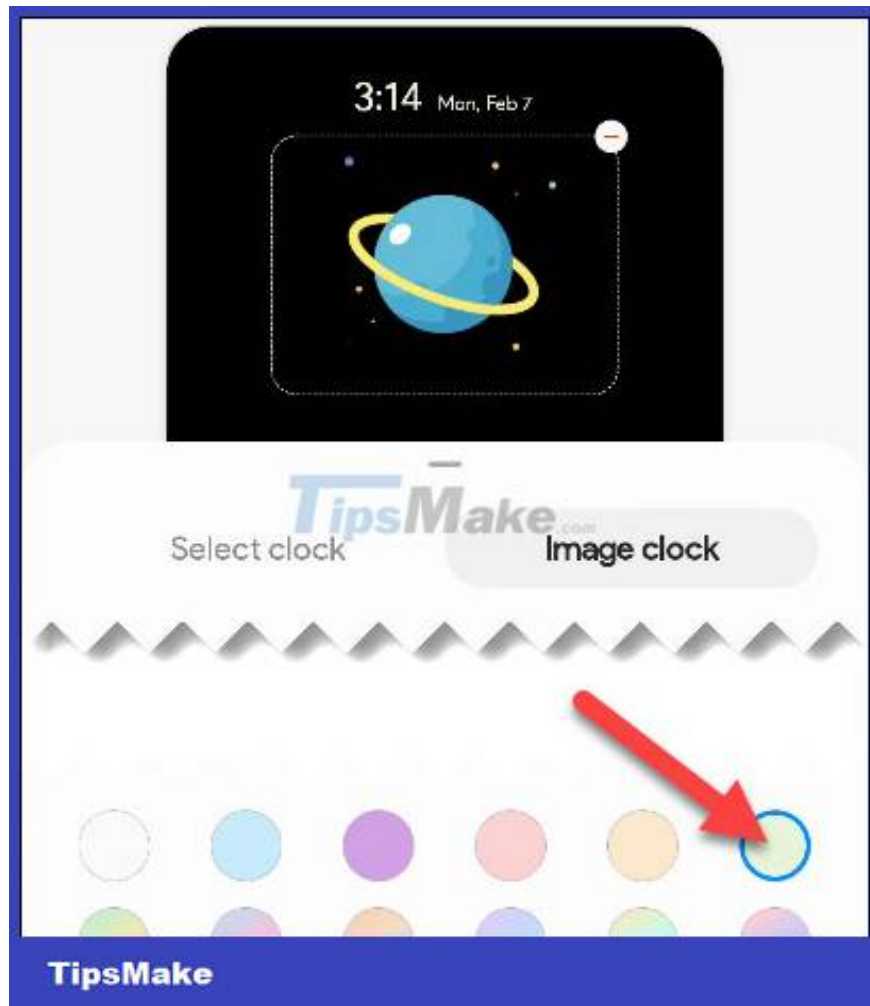


The visual clock style will be more complicated. You can use stickers, Bitmoji ' **AR Emoji** ' (an Animoji clone) from Samsung, photos from your gallery, or themes from the Galaxy Store.

1. Sticker: Simplified animation with black background.
2. AR Emoji: Custom 3D animated characters designed by you.
3. Bitmoji: 2D animated characters designed by you.



You can still choose the color of the clock and the date displayed.



When done, tap ' **Done** ' at the bottom.



Next, you can add music playback information to the Always On Display. This will display the current song/podcast.



Finally, decide if you want the Always On Display to be displayed in portrait or landscape orientation, and whether or not auto-brightness should be applied.



That's all, wish you have the best setup!

You finished reading the article "**How to customize the Always On Display screen on Samsung Galaxy phones**" edited by the [TipsMake](#) team. We hope this article has provided you with many useful tech tips and tricks. You can search for similar articles on tips and guides. Thank you for reading and for following us regularly.