

How to crop a bitmap image in CorelDRAW

In the article below, TipsMake will guide you on how to crop bitmap images on older versions of CorelDRAW. On newer versions of the application, you follow similar steps.

Refer to the article below from TipsMake to learn how to crop bitmap images in **CorelDRAW** . Additionally, you can refer to other articles on TipsMake to learn more about removing borders in CorelDraw.



Instructions on how to crop a bitmap image in Coreldraw

Download the latest version of CorelDraw here:

=> See more instructions on installing and using Corel here.

How to crop a bitmap image in CorelDRAW

Unlike bitmap editing applications, digital images in CorelDRAW are essentially just bitmap-based objects placed within a vector clipping path.

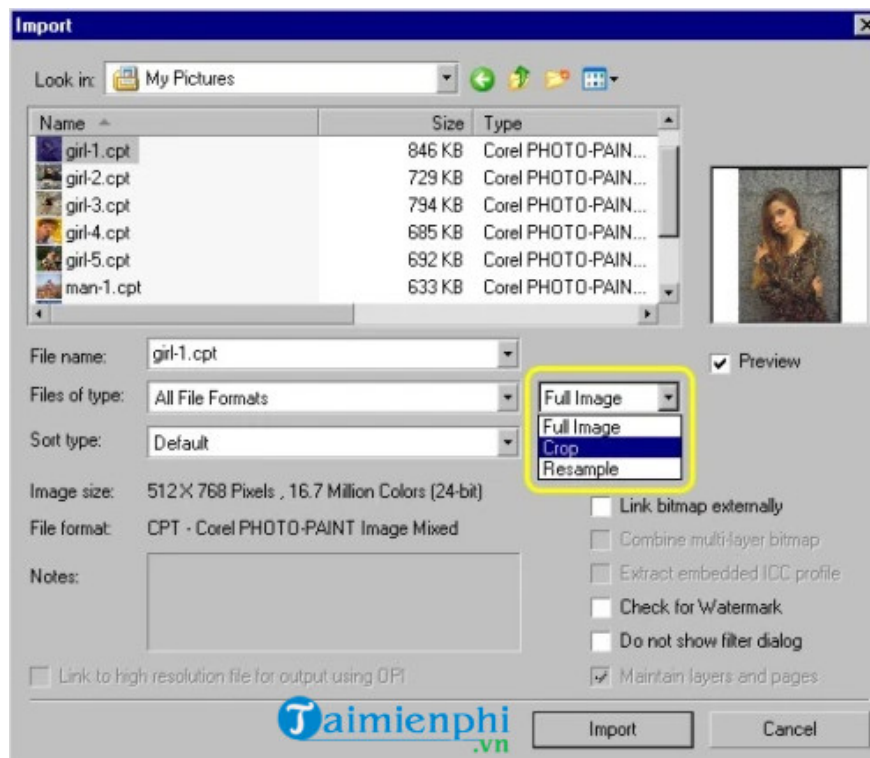
This means that the clipping path contains the image, and the boundaries of this vector path define the overall shape of the bitmap. By controlling the path, you can easily crop the bitmap image within it.



1. Method 1: Use the Shape Tool to change the position of the buttons.

Step 1 : To begin, ensure you have a bitmap. Bitmaps can be converted from vector objects using the **Convert to Bitmap** command or added from an external source using the **Import** command (Ctrl + I). Next, click to select the bitmap.

Step 2: If you choose to import a bitmap, you must first crop the bitmap by selecting **Crop** from the menu in the Import dialog box, as shown below.



Step 3: Next, click **OK** . A Crop Image dialog box will appear on the screen. Here, enter the values ??in the **Top**, **Left**, **Width** , and **Height** fields , then click **OK** . This allows you to add a cropped bitmap copy to the page.



Step 4: If the image you want to crop is already in the document, simply select the Shape Tool (F10) and click to select the bitmap.



Note: There are 4 buttons displayed at the 4 corners of the image. Drag these points to crop the bitmap.

Step 5: Next, use **the Shape Tool** cursor to click on one of these buttons and drag. When you release the mouse button, part of the image will be hidden.



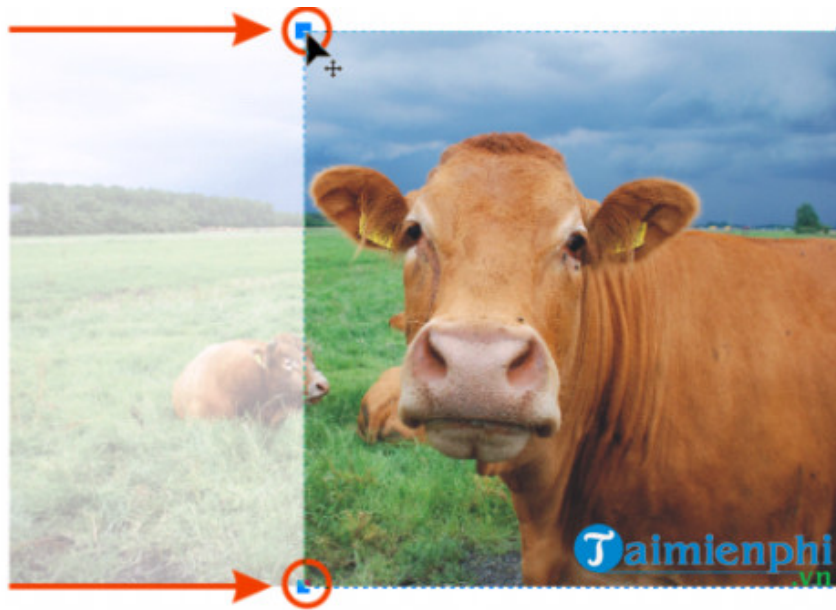
Step 6: To display the hidden image, simply click and drag the button back to its original position.

2. Method 2: Cropping a bitmap image in CorelDRAW by dragging

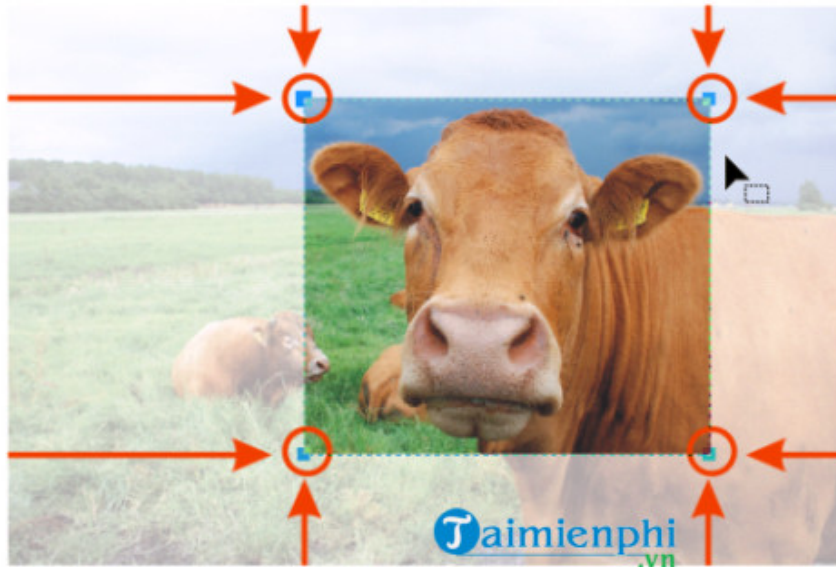
Step 1: Using the **Shape Tool**, click to select the bitmap. Determine the area where you want to crop the image, then press and hold **the Shift key and click** on each node, or click and drag the nodes.



Step 2: After selecting the nodes, press and hold the **Ctrl** key while dragging the two nodes on the bitmap. Pressing and holding the Ctrl key restricts movement while dragging the image.



Step 3 : Repeat the same steps for the sections you want to cut.



Finally, another way to crop a bitmap image in CorelDRAW is to use the **Crop Bitmap** command , or click on **Bitmaps => Crop Bitmap** , or click the **Crop Bitmap** button on the Property Bar.

While using Corel, if you want to work faster, you can refer to and use Corel keyboard shortcuts for better and more convenient operation.

The article above, provided by TipsMake, has guided you on how to crop bitmap images in CorelDRAW. Additionally, if you have any further questions or need clarification, please leave your comments in the section below the article.

You finished reading the article "**How to crop a bitmap image in CorelDRAW**" edited by the [TipsMake](#) team. We hope this article has provided you with many useful tech tips and tricks. You can search for similar articles on tips and guides. Thank you for reading and for following us regularly.