

# How to create Windows To Go USB using AOMEI Partition Assistant, storing Win operating system

Creating a Windows to Go USB with AOMEI Partition Assistant will give you more flexibility in using your personal data on multiple mobile devices anytime, anywhere. To put it more simply, Windows to Go is an operating system installed on a USB, booting from a USB instead of an internal HDD like we usually use.

Windows to Go is not a strange operating system but Windows 8/10 is used through a number of tools to optimize and install onto USB such as AOMEI Parttion Assistant, Rufus,. Creating a Windows to Go USB will Very convenient and suitable for individuals who always have to move for work or rescue in case regular Windows suddenly fails and cannot boot. In particular, AOMEI Parttion Assistant allows you to create USB Windows to go from any version of Windows 8/10 very easily.

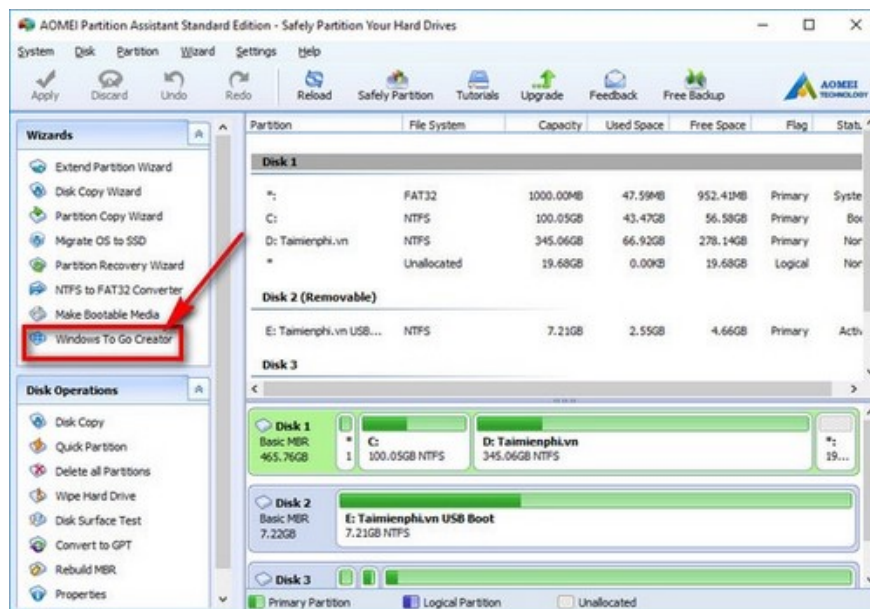
## INSTRUCTIONS FOR CREATING A WINDOWS TO GO USB USING AOMEI PARTITION ASSISTANT

### *PREPARE :*

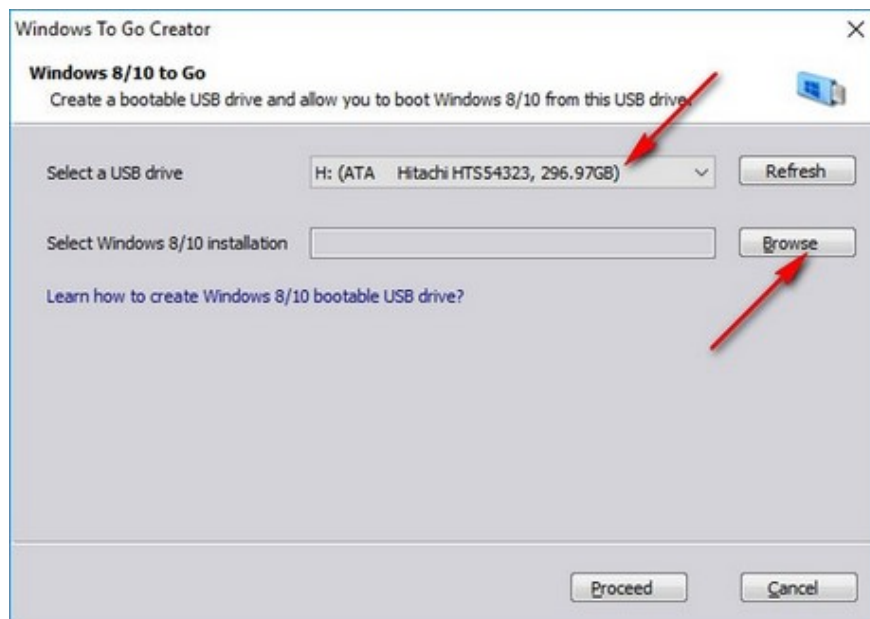
- 01 USB or portable hard drive with a minimum capacity of 32GB to install Windows to Go
- Windows 10 operating system installer: Download **Windows 10** or Windows 8 operating system: Download **Windows 8**
- Download and install the latest version of AOMEI Partition Assistant tool here: Download **AOMEI Partition Assistant**

### *PERFORM :*

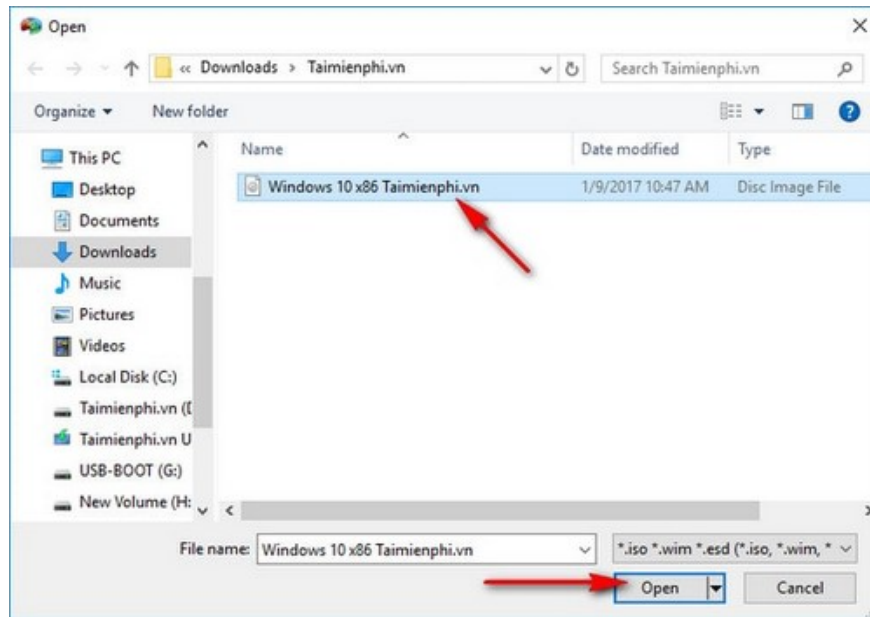
*Step 1:* **Connect the** prepared USB/mobile hard drive to the computer. Then start the **AOMEI Partition Assistant** tool , in the main interface of the tool select Windows To Go Creator to start the Windows to Go USB creation settings using AOMEI Partition Assistant.



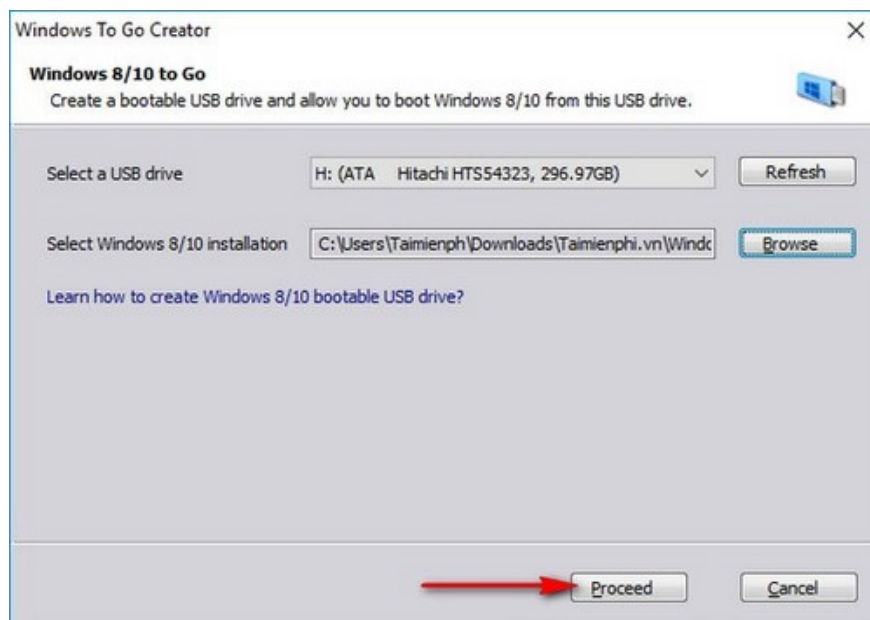
Step 2: On the Windows To Go Creator window, select the correct USB/portable hard drive with a capacity of over 32GB that you previously connected in the **Select a USB Drive** section . Then click **Browse** to find the Windows 8/10 installer



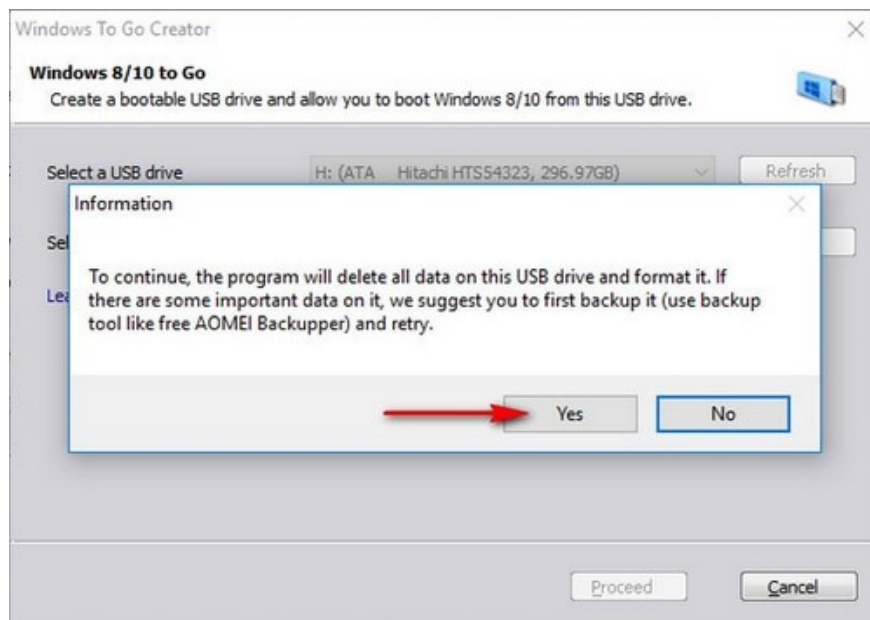
Step 3: Select the Windows installation of the correct architecture for which you want to create a Windows to go USB, then select **Open** .



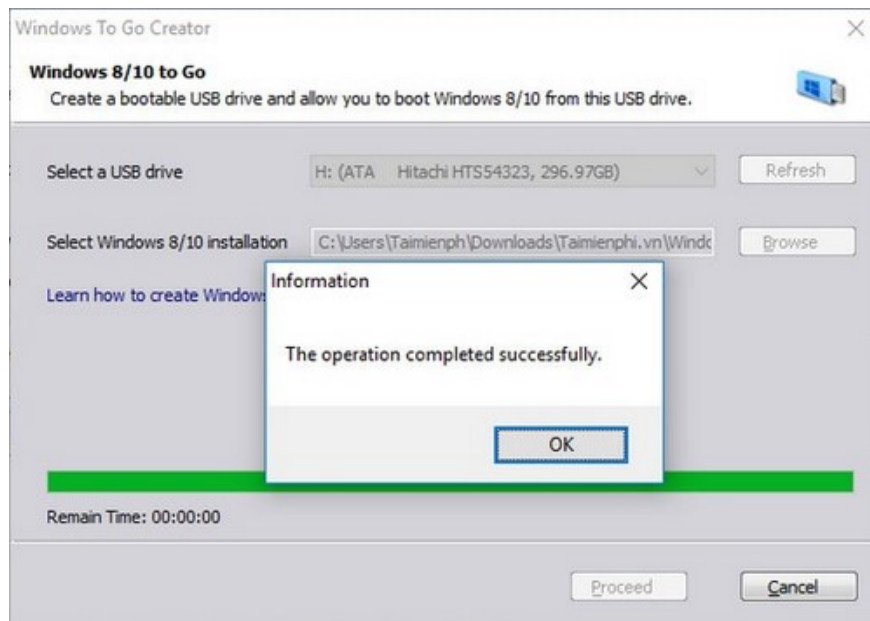
*Step 4:* After selecting the Windows installation, you will be taken to the Windows To Go Creator window. Here you confirm that the information such as the USB drive and the Windows installation selected to create the Windows To Go USB are correct to avoid unfortunate errors, then click **Proceed** when you have checked the information is correct.



*Step 5:* The tool will display a warning that all data in your USB/portable hard drive will be erased when creating a Windows To Go USB. Therefore, you should back up important data before clicking **YES** to start the process of uncompressing and installing Windows To Go to USB.



*Step 6:* The process of creating a Windows To Go USB will take some time depending on the computer speed as well as the capacity of the Windows installer. After the process is completed, the tool will display the message **The operation completed successfully** .



So you have completed creating a Windows To Go USB with the operating system and starting Windows To Go on any device where you attach the USB. You can use WinToUSB to install a version of Windows 8 or smaller when you only have a USB capacity less than 16GB.

Creating a Windows To Go USB is a fairly effective 'fire-fighting' method when you need to use your computer but Windows has errors. If you need to fix Windows errors quickly and conveniently with USB, you should create a boot with Hiren's Boot with many powerful features to help you repair, restore data,.

You finished reading the article "**How to create Windows To Go USB using AOMEI Partition Assistant, storing Win operating system**" edited by the [TipsMake](#) team. We hope this article has provided you with many useful tech tips and tricks. You can search for similar articles on tips and guides. Thank you for reading and for following us regularly.

---