

How to create Windows 10 installation USB using Rufus, Boot UEFI and LEGACY

Creating a Windows 10 installation USB with Rufus, Boot UEFI and LEGACY is an important step to upgrade or reinstall the Windows operating system. To do this, you need a blank USB and a standard Windows 10 installer. Proceed to create a bootable USB to install Windows 10 using Rufus according to the instructions below. This is an easy way to get an important tool to fix errors or speed up your computer.

Rufus is considered one of the best Windows bootable USB creation tools today. With compact size and simple settings, it still ensures stability for Windows. Creating a Windows 10 bootable USB with Rufus is an extremely smart choice when you don't want to burn a Windows installation disc.

INSTRUCTIONS FOR CREATING USB BOOT WIN 10 USING RUFUS

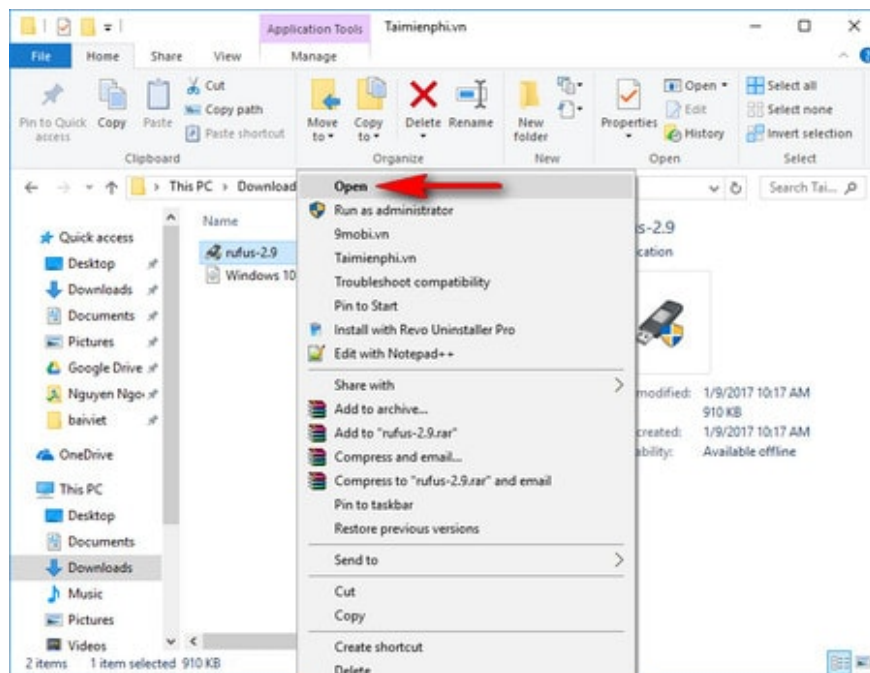
1. Prepare

Before entering the step of creating a Windows 10 boot with Rufus, you need to prepare:

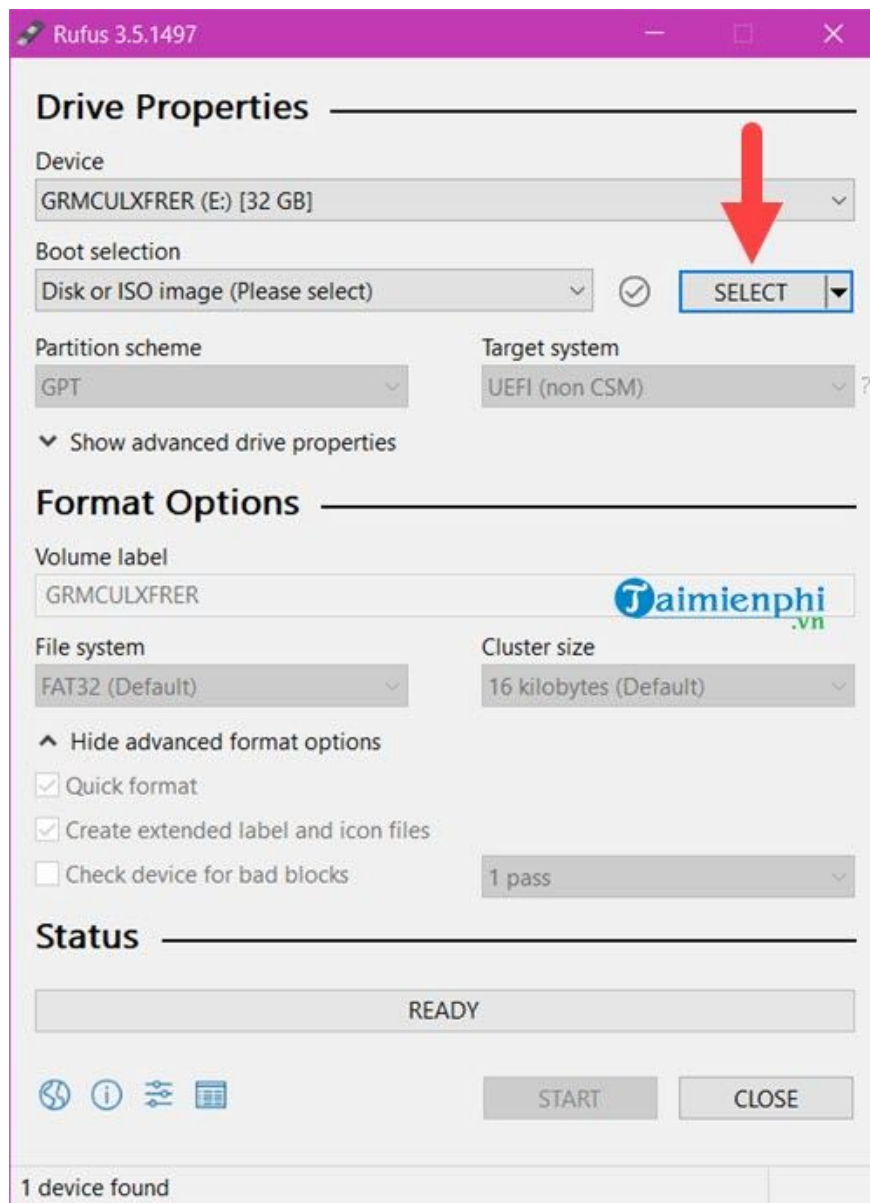
- 01 USB with a capacity of 4GB or more
- Rufus Windows boot usb creation tool: Download **Rufus**
- 01 Windows 10 operating system installation: Download **Windows ten**

2. Implementation

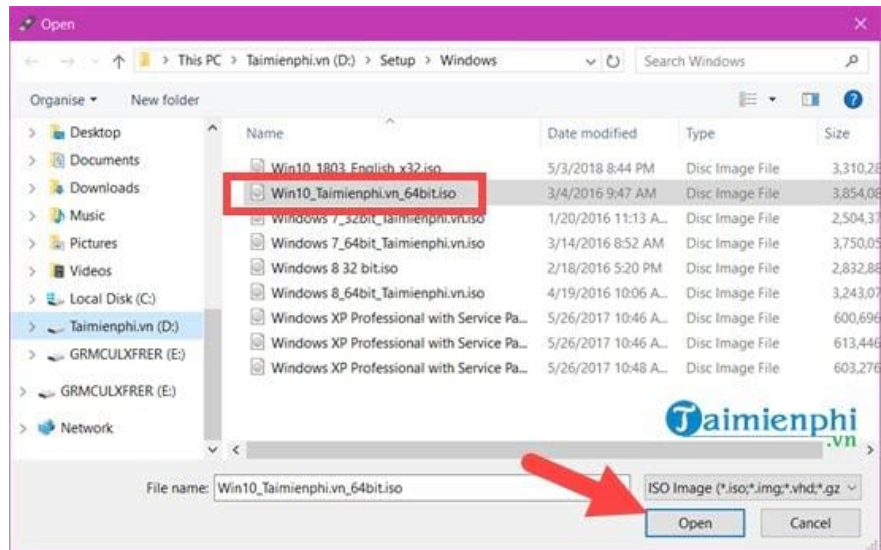
Step 1: Connect the USB you prepared to the computer, then launch Rufus.



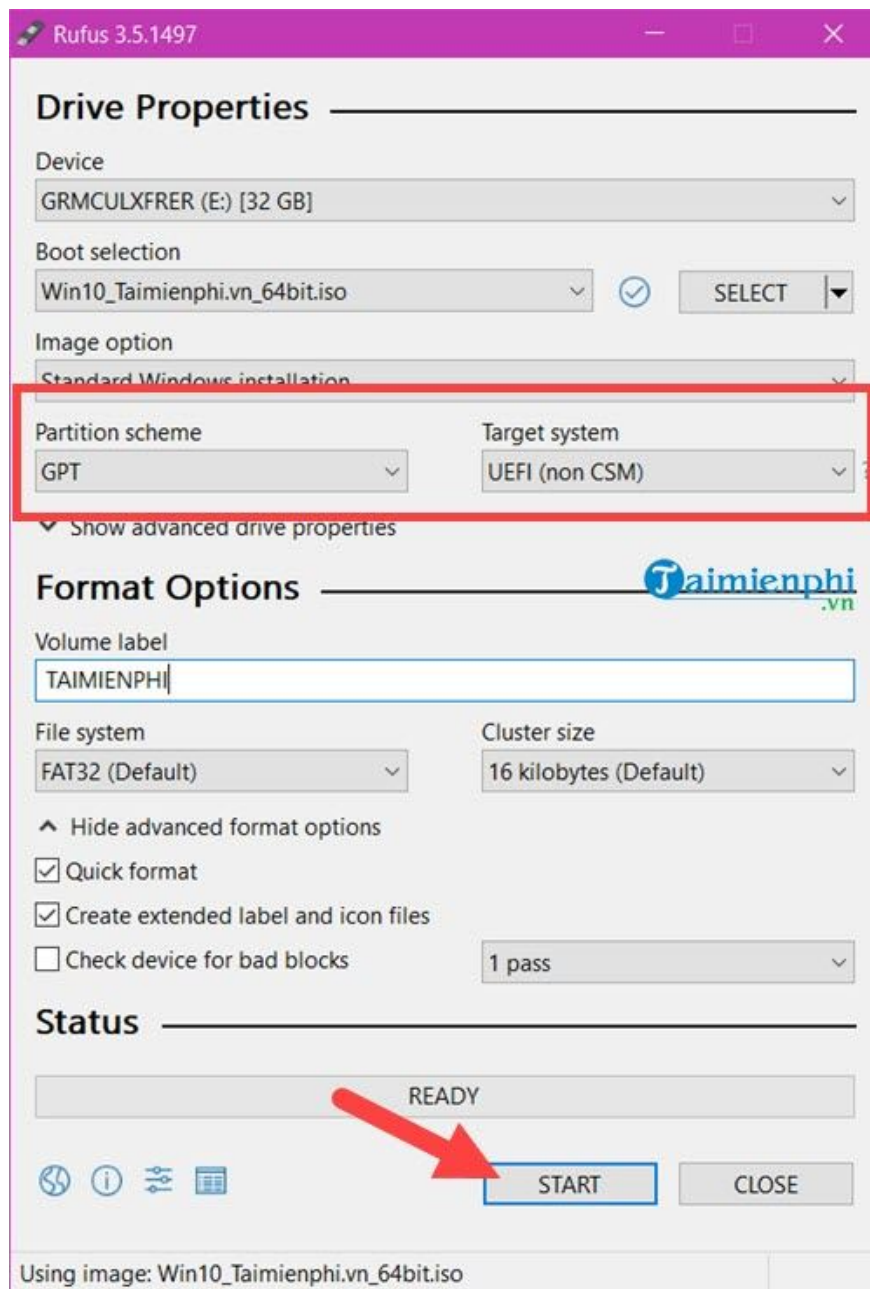
Step 2: In the **Device** section , select the exact USB you want to create a Windows 10 boot USB with Rufus. Then select **SELECT** to navigate to the Windows 10 iso file you have prepared.



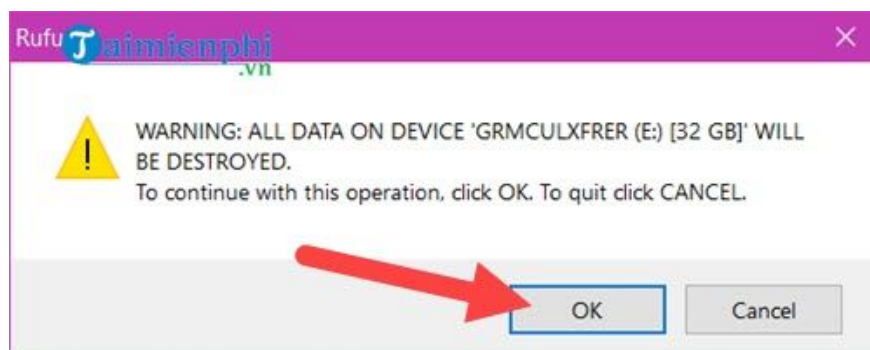
Step 3: Choose the appropriate version of **Windows 10** that you want to boot. Then click **Open** to put the file into boot.



Step 4: Now in the **Partition scheme** section , depending on your computer standard, choose **GPT** or **MBR** . Then press Start. If you don't know what standard your computer follows, you can see the instructions to Check Windows uses UEFI or Legacy BIOS standard.



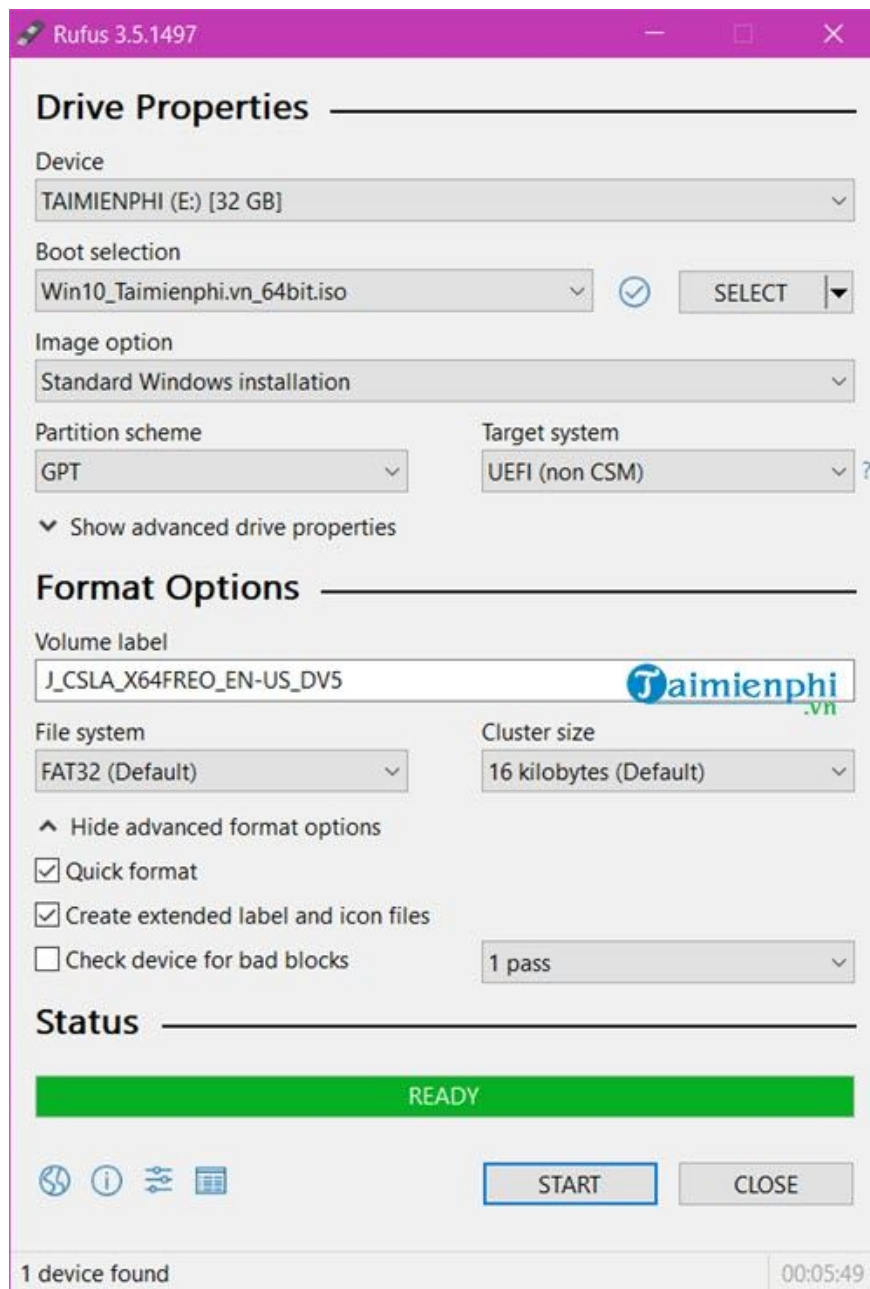
Step 5: Before decompressing, create a Windows 10 bootable USB with Rufus. The tool will display a dialog box warning that all data on your USB will be erased. You should **back up important data on your USB** then click **OK** to start the process.



Step 6: It will take some time for Rufus to boot Windows 10 onto your USB.



- When the word **READY** appears, creating a USB boot to install Windows 10 with Rufus is complete



Then you can use MobaLiveCD to check if the USB can be booted instead of having to reset the computer, which will take time.

Hope you install Windows 10 successfully!

You finished reading the article "**How to create Windows 10 installation USB using Rufus, Boot UEFI and LEGACY**" edited by the [TipsMake](#) team. We hope this article has provided you with many useful tech tips and tricks. You can search for similar articles on tips and guides. Thank you for reading and for following us regularly.