

# How to create whirlpool effect on Photoshop

Creating a whirlpool effect on Photoshop will increase the art of the image, as the whirlpools move.

Creating additional effects for photos always adds art, as well as creating newcomers that attract viewers. With Photoshop image editing software, we can use a lot of effects creation tools such as creating color effects on Photoshop, lightning effects on Photoshop, or creating water movement effects.

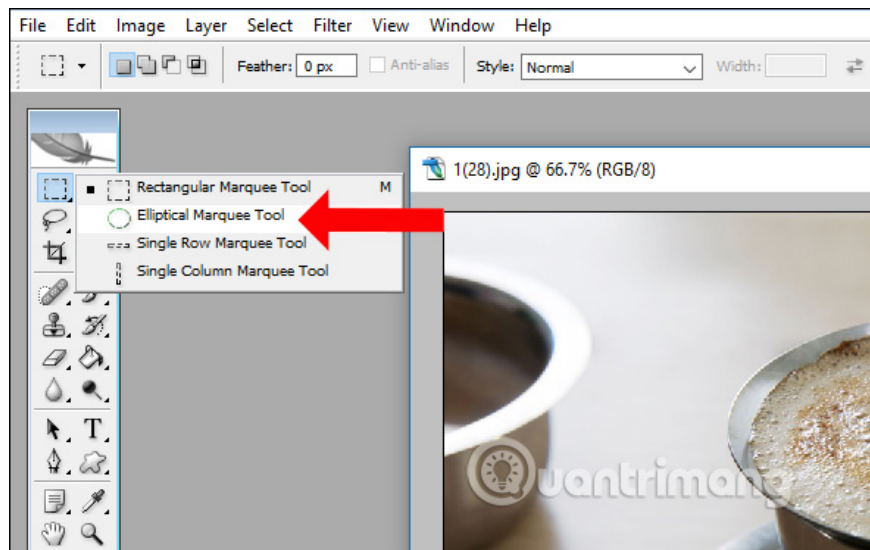
Motion whirlpool effect can be used in many different situations, such as with a glass of water. Instead of leaving the image with a static water surface, we can create round swirls that look like motion. The following article will guide you how to create circular whirlpools in Photoshop.

1. How to use Photoshop CS5 - Part 12: Create Light and Glow effects
2. How to use Photoshop CS5 - Part 13: Create a reflection effect from the water
3. How to use Photoshop CS5 - Part 14: Create motion effects

## Tutorial to create Photoshop whirlpool effect

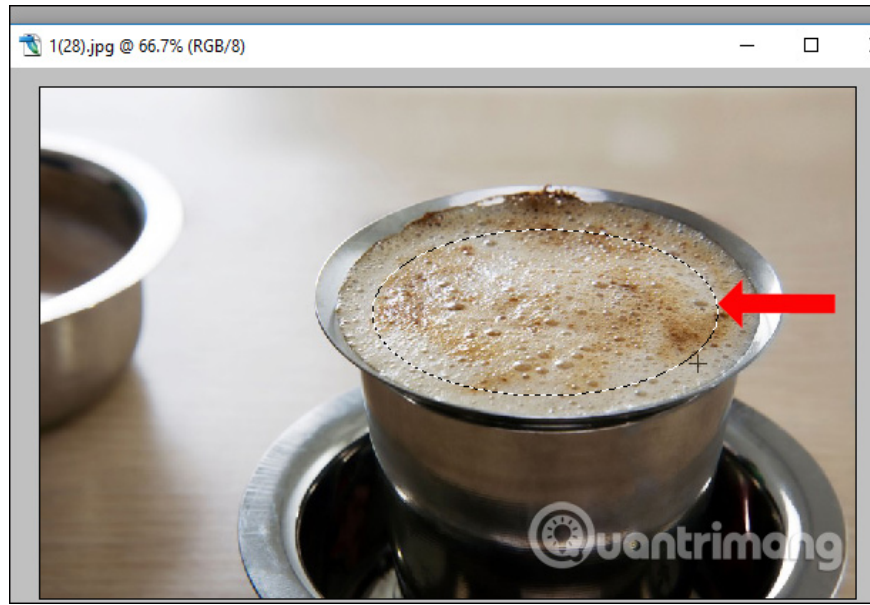
### Step 1:

Click **File** and **select Open** to open the saved image in the computer to create the effect. Next, select the **Elliptical Marquee Tool** to create a selection on the water.



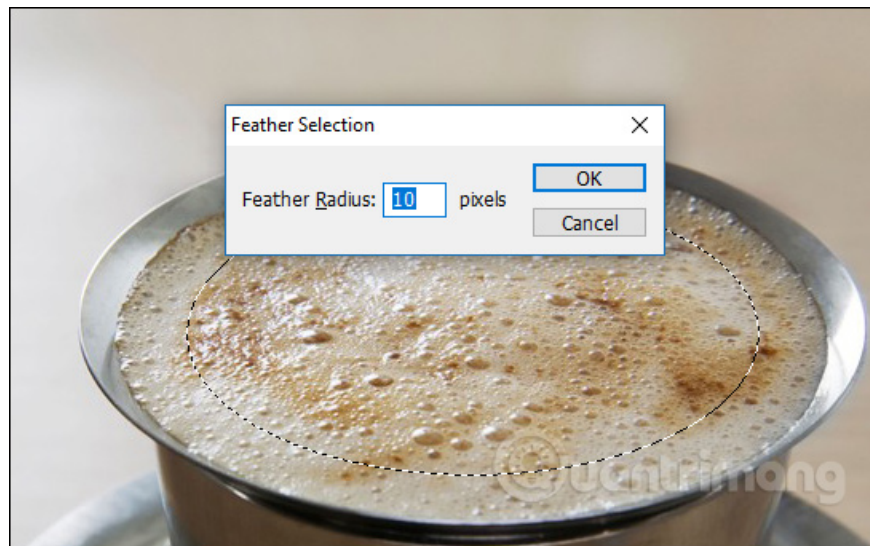
### Step 2:

Next, the user **delineates the water surface** on the coffee cup.



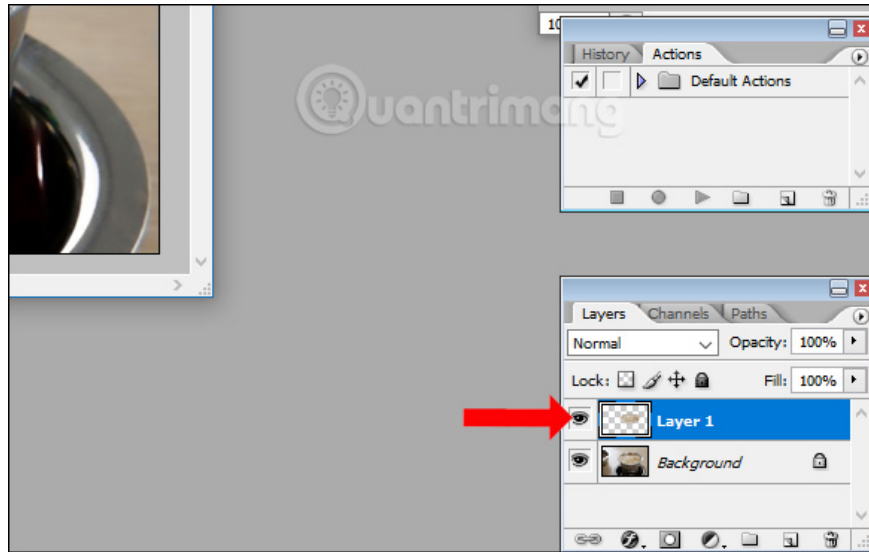
**Step 3:**

Press **Shift + F6** key combination and the **Feather Selection** dialog box appears. Here the user adjusts the horizontal bar at the Feather Radius between **10-15** and then click OK.



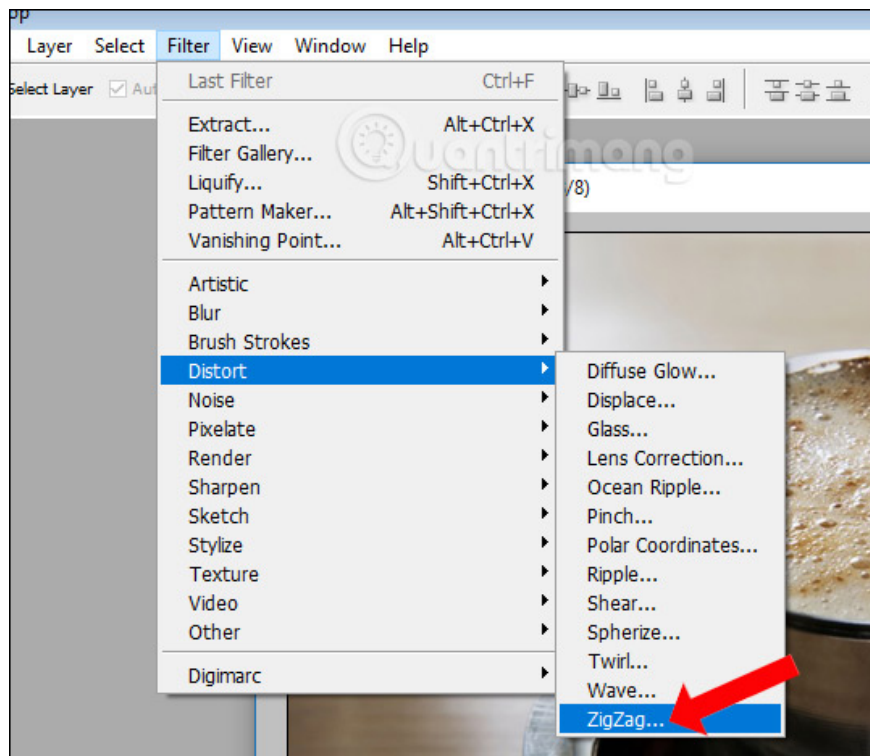
**Step 4:**

Click **Ctrl + J** to copy the selected water area to add a new layer as shown below.

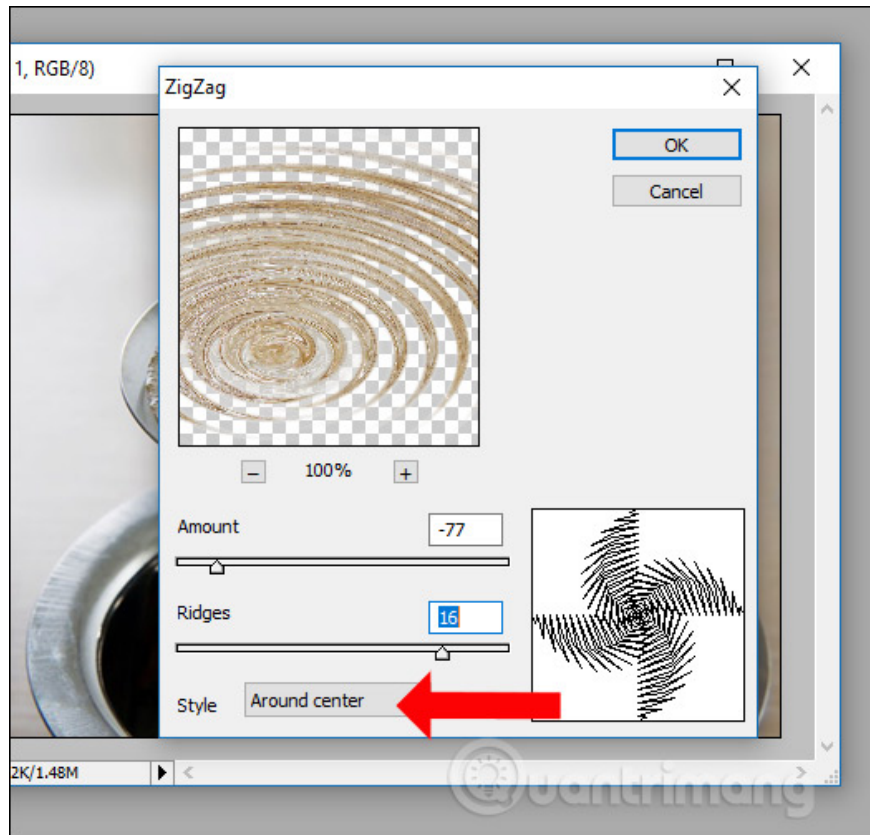


### Step 5:

We look at the toolbar above and click on **Filter** then click on **Distort** and select **Zigzag** as shown.



At Zigzag interface, you select the **Style as Around Center** to create whirlpools from the center to spread out outside. Then move 2 sliders to create a whirlpool effect at your disposal.

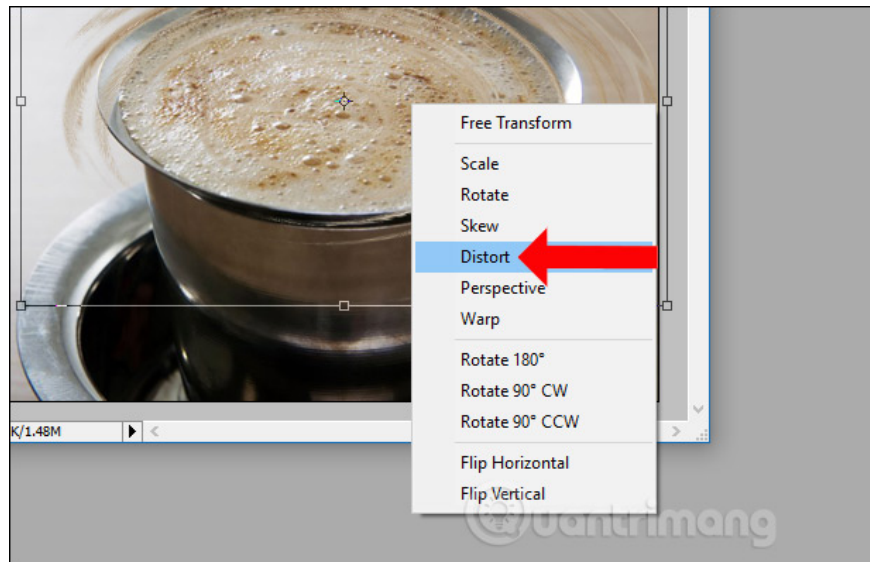


**Step 6:**

The image will then have a whirlpool effect as shown below.

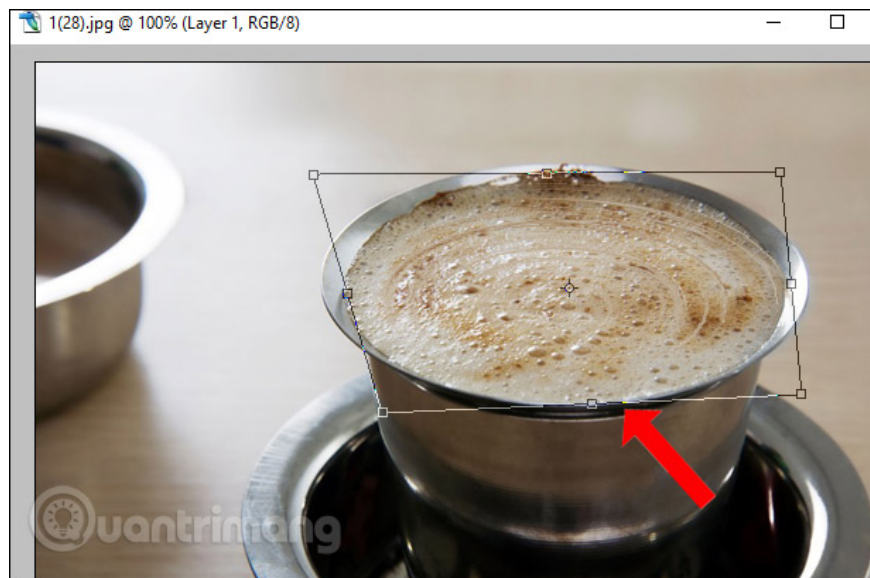


Press **Ctrl + T** again and right-click and choose **Distort** .

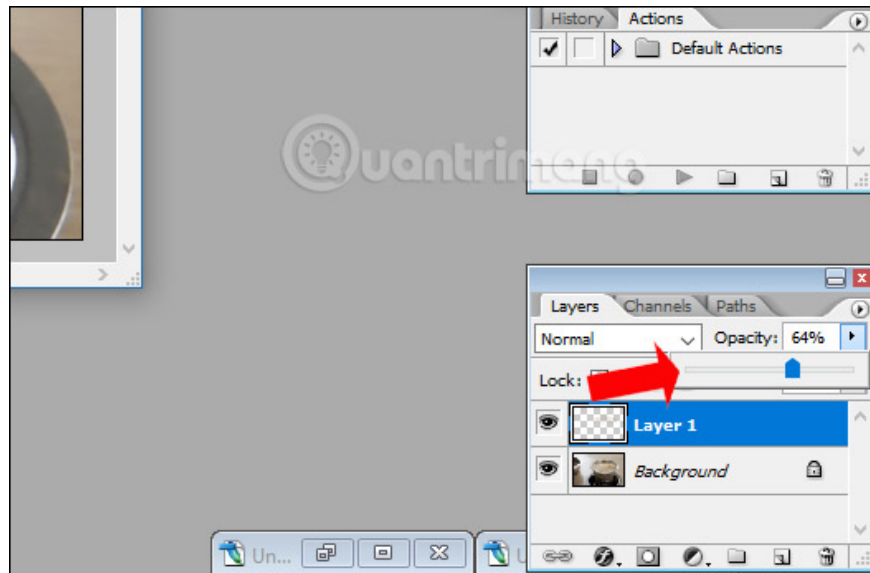


### Step 7:

Users align, narrow the whirlpool area, adjust the position in the middle of the cup of water accordingly. Press Enter to complete the editing.



Next, on the duplicated layer, **adjust the opacity** to create a more realistic feel for the whirlpool. Finally, click Save to save the image.



Your result will be a cup of coffee with a whirlpool like the picture.



Depending on the ability and skills of image processing, creating effects for images we can create a whirlpool effect that looks much better. The basic steps will be like above.

See more:

1. How to integrate images into text on Photoshop
2. How to design a simple logo in Photoshop
3. Instructions for designing websites in Photoshop

I wish you all success!

You finished reading the article "**How to create whirlpool effect on Photoshop**" edited by the [TipsMake](#) team. We hope this article has provided you with many useful tech tips and tricks. You can search for similar articles on tips and guides. Thank you for reading and for following us regularly.

