

How to create Watermark on PowerPoint

Watermarks is not available on PowerPoint, but you can use other tools to create Watermarks.

The Word Watermark tool will be used to insert the company logo, the name of the website is submerged behind the content, to avoid copying the content of the document. However, Watermark is not available in PowerPoint or on Excel, causing some difficulties for users when they want to add a company name to the content.

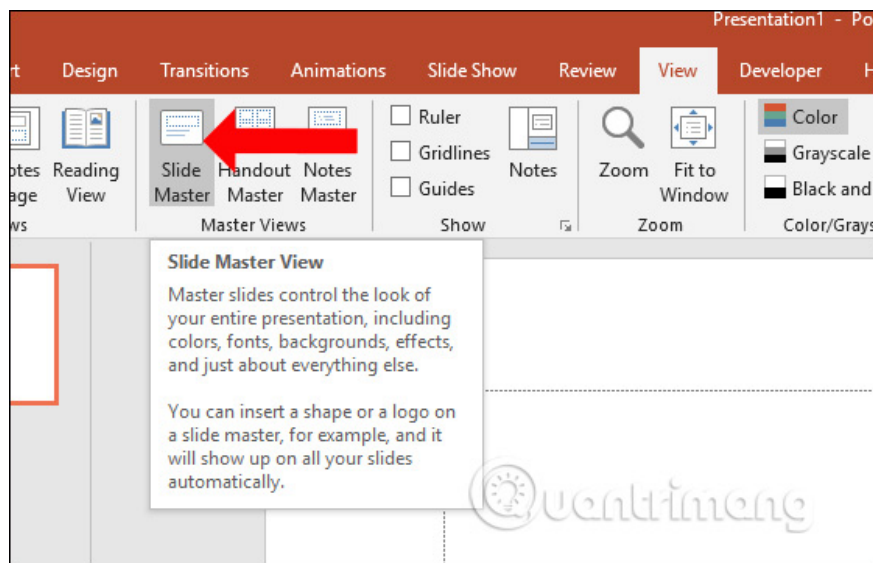
So how do I create Watermark on Excel or PowerPoint? Previously, Network Administrator showed you how to create a sunken logo on Excel with the Header & Footer tool. With PowerPoint, we need to use the Slide Master tool. The following article will guide you how to create PowerPoint watermark.

1. How to create a crossword game on PowerPoint
2. How to make PowerPoint fireworks effect
3. How to turn on the dark color mode on Office 2019

Instructions for inserting Watermark into PowerPoint

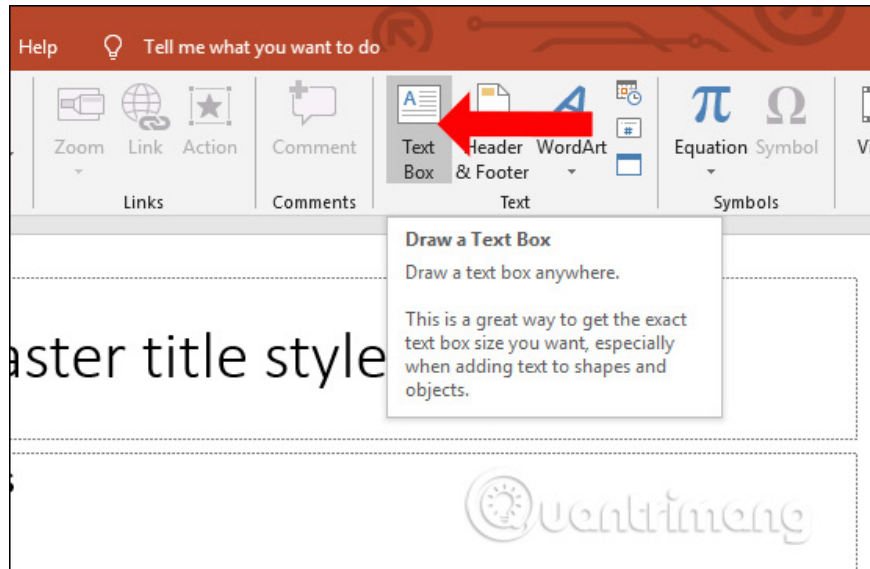
Step 1:

First, click on the **View tab** and then click on **Slide Master** .

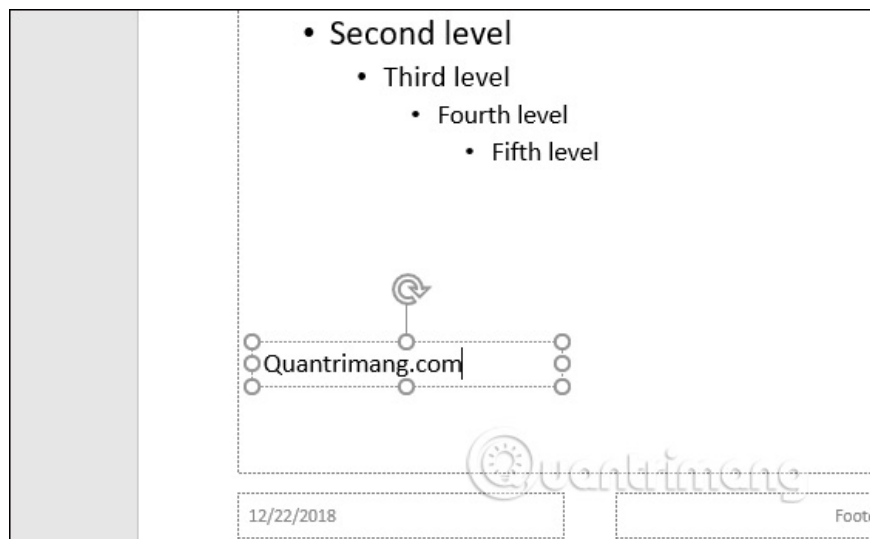


Step 2:

At the **first slide**, click on the **Insert tab** and then click on the **Text box** to insert a text logo into a slide.



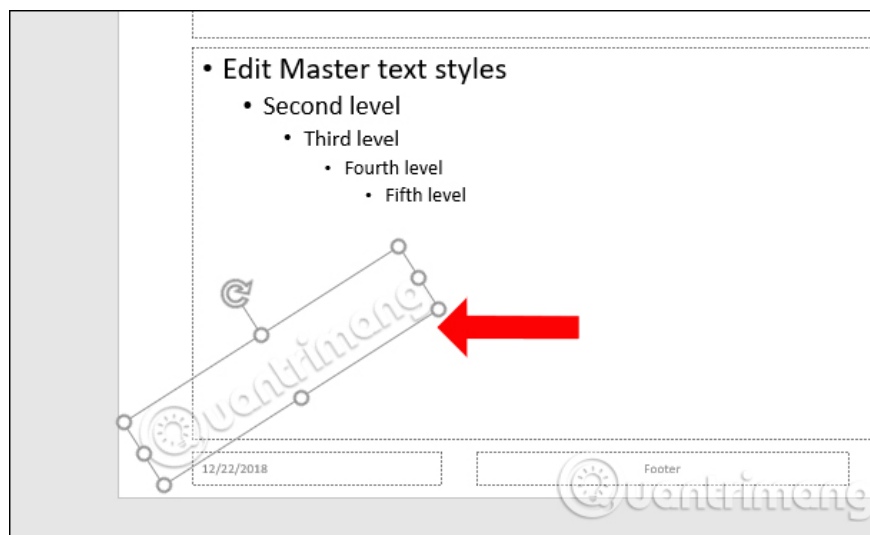
Next enter the content you want to create the logo into the Text box. We can also rotate the text in the frame to the angle you want.



If you want to add colors to text in frames or artistic fonts, click the **Format tab** and then select the color below, in the WordArt Styles section.

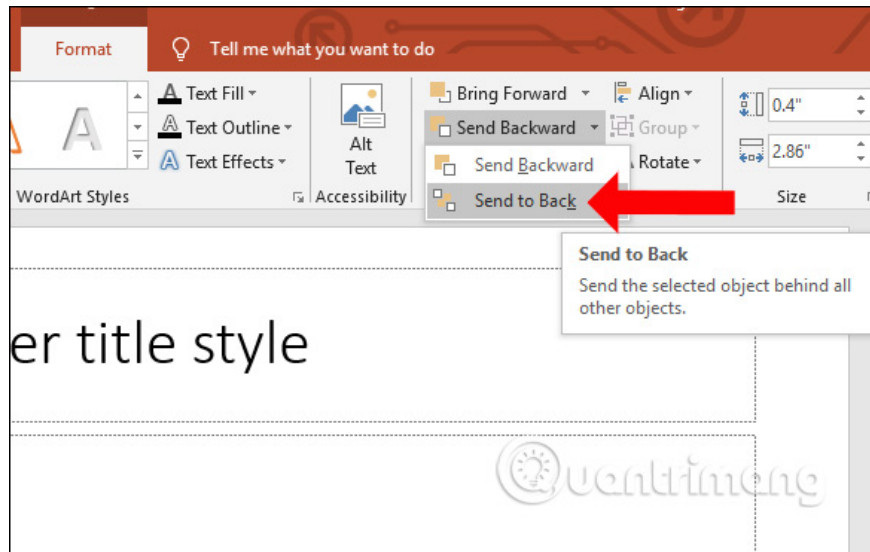


In addition, users can insert images to create Watermark on Excel by clicking Insert> Picture.



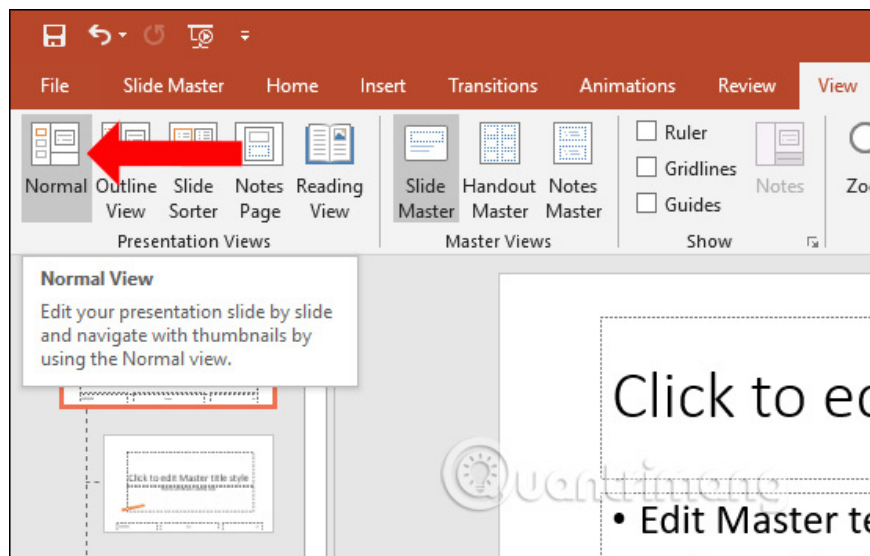
Step 3:

After editing the text formatting, we will insert the sunken text to the document content. Click on the **Formart** tab and then select the **Send Backward** section, then select **Send to Back** .

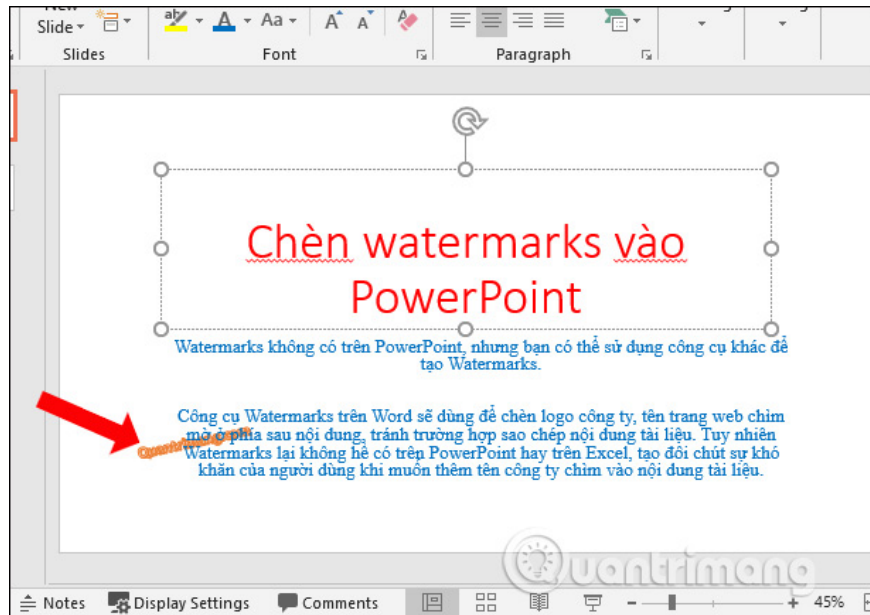


Step 4:

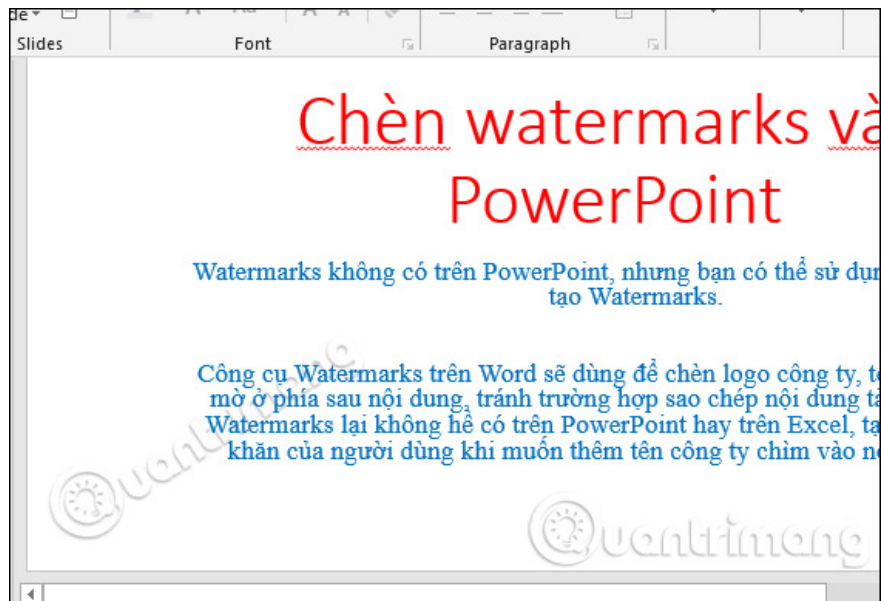
Continue to click the **View tab** and then click on **Normal mode** to bring PowerPoint slides to normal view.



As a result, we will see the sinking text displayed in the slide content as shown below. We insert any content, the text will also be hidden below the content.



If inserting the image will also display under the content entered on the slide.

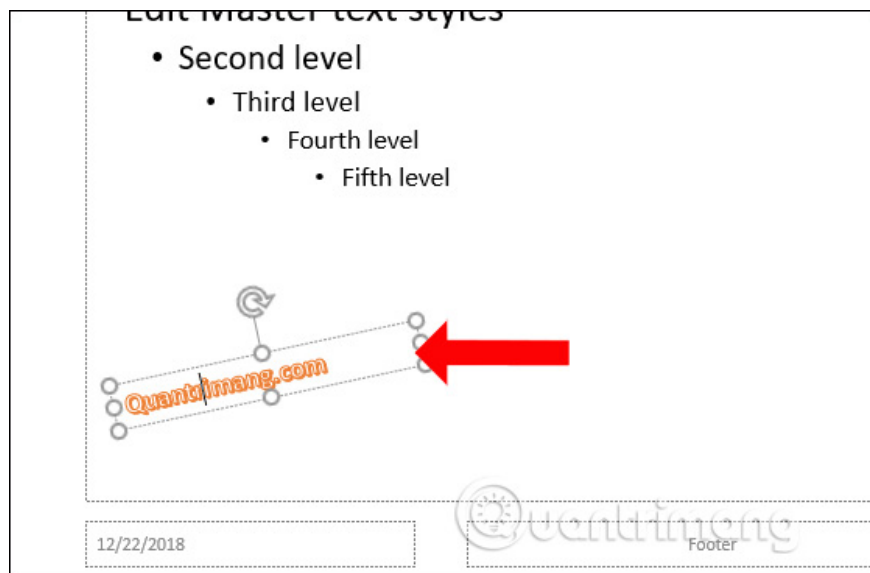


If you press Enter to add a slide, the logo will still display on the new slides added.

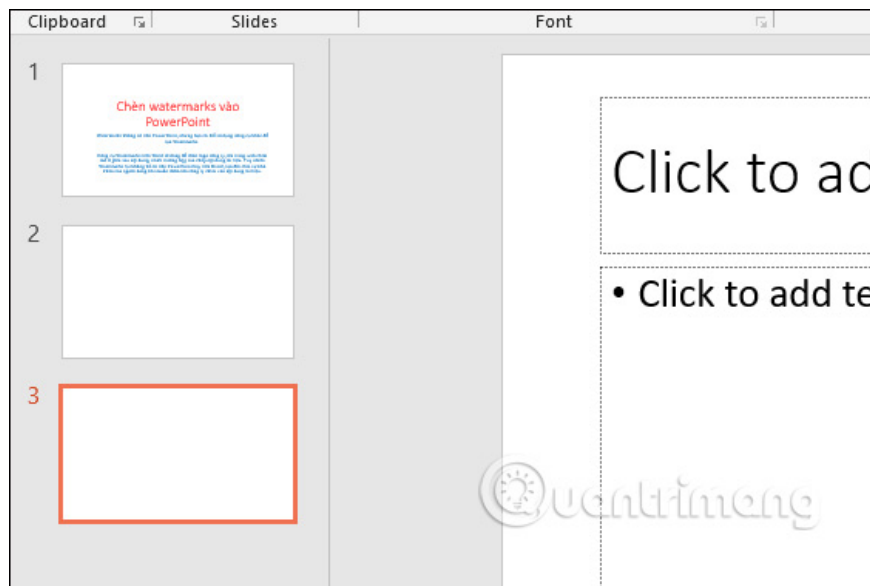


Step 5:

To **delete the Insert Watermark** in PowerPoint, click on the **View tab** and then click on the **Slide Master** section, also click on **the first slide** and **delete the added Text box** or image.



When returning to the regular view slide, the entire slide will be deleted as shown below.



Although there is no Watermark tool available on PowerPoint, you can use Slide Master to insert a Text box to create a sunken logo, with text or image content depending on the content required by the document. However, when inserting Watermark, users need to select the appropriate insertion position on the whole slide, avoid Watermark to cause discomfort when reading content.

See more:

1. How to save presentations in PowerPoint 2016
2. How to add and print PowerPoint slides with notes of the presenter
3. Create beautiful slides for PowerPoint presentations with 8 tips

I wish you all success!

You finished reading the article "**How to create Watermark on PowerPoint**" edited by the [TipsMake](#) team. We hope this article has provided you with many useful tech tips and tricks. You can search for similar articles on tips and guides. Thank you for reading and for following us regularly.