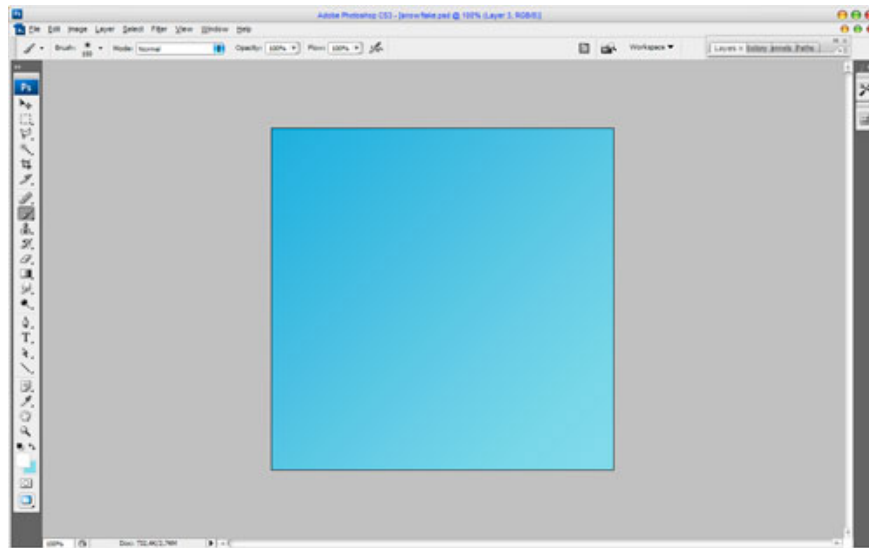


How to create snowflakes in Photoshop

Do you want to make your photos more vivid and bold Christmas atmosphere coming. The following article Admin network will guide you how to create snowflakes on photos in Photoshop.

Counting down the time, Christmas is about to come. If you want to make your photos more vivid, bring more Christmas atmosphere by creating more snowflakes on the photo. The following article Admin network will guide you how to create snowflakes on photos in **Photoshop**.

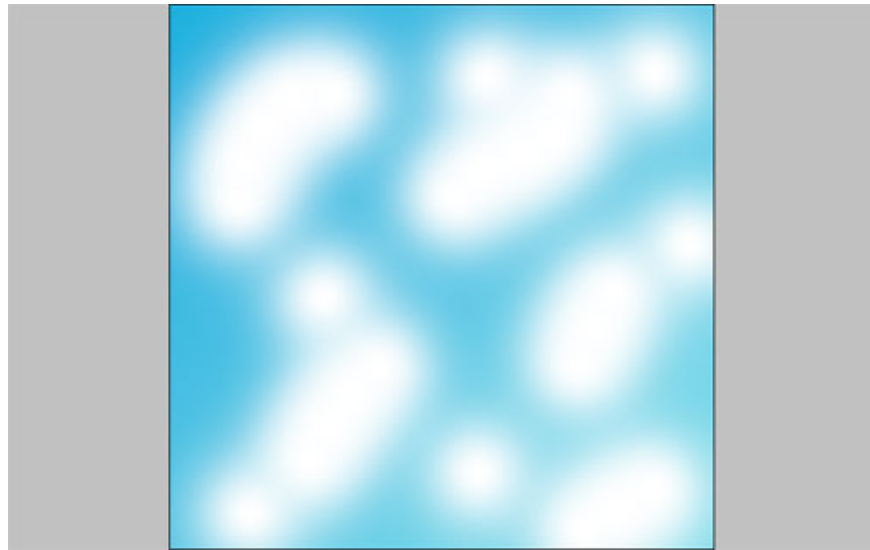
First open your **Photoshop** . Next, select on the **Gradient Tool bar** to make a fill color for the Background. On the settings bar, click on the color strip to display the **Gradient Editor** window. Click the left button below the color strip, then continue to click the color box next to **Color** to display the color correction window. Do the same with the right button below the color strip. The two color values ??for the two ends are # **8cdbe8** and # **49aedd** respectively.



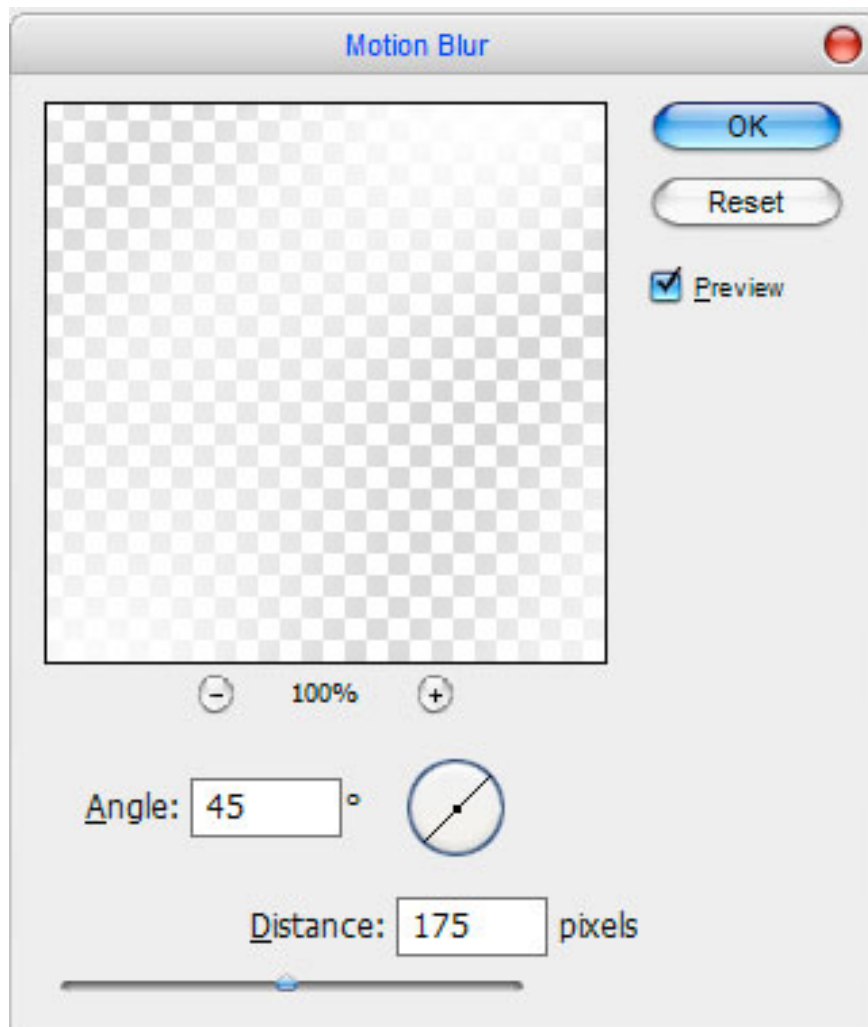
Next create a new layer. Click the **New Layer** icon in the lower bar of the Layer window to create a new Layer. Next select the **Brush Tool** in the toolbar.

Further reference: 14 simple steps to create a snow effect for the photo

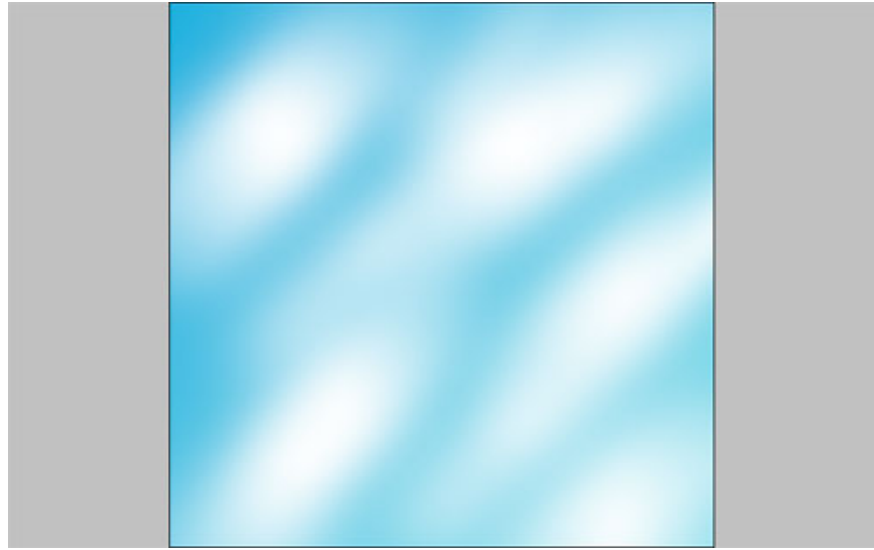
On the settings bar, select **Soft round brush** , adjust Size to about 150px. Click on the color selection box at the bottom of the toolbar and change the color value to **#ffffff** . Add some lines (by adding white parts) as shown below.



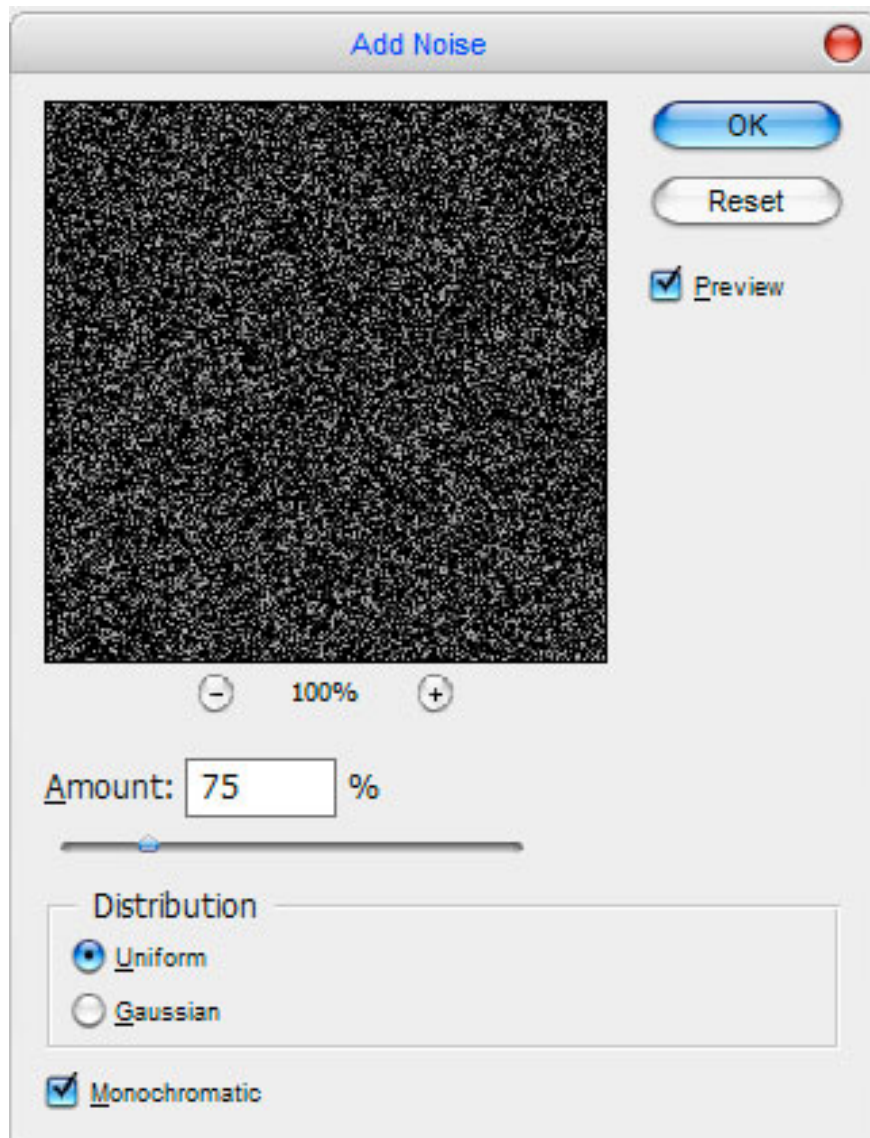
Next go to **Filter**> **Blur**> **Motion Blur** and adjust the value as shown below:



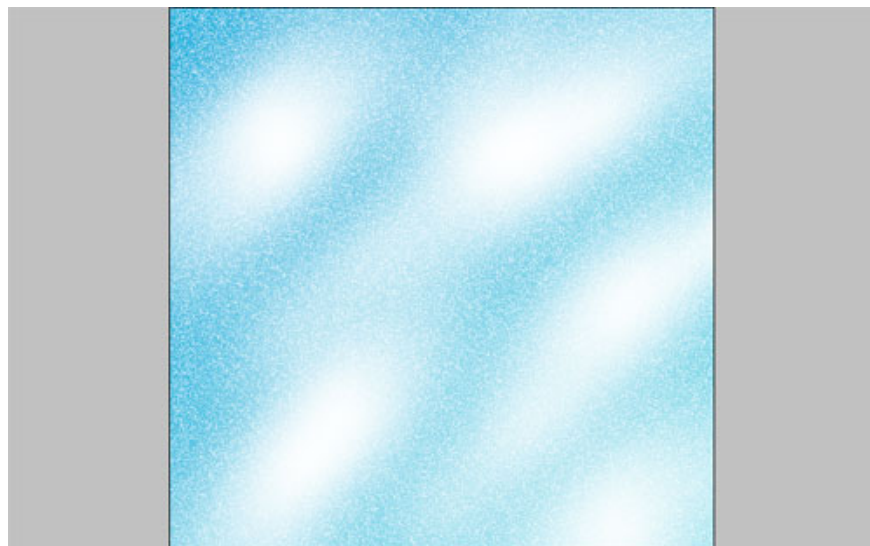
You will get a new image as shown below:



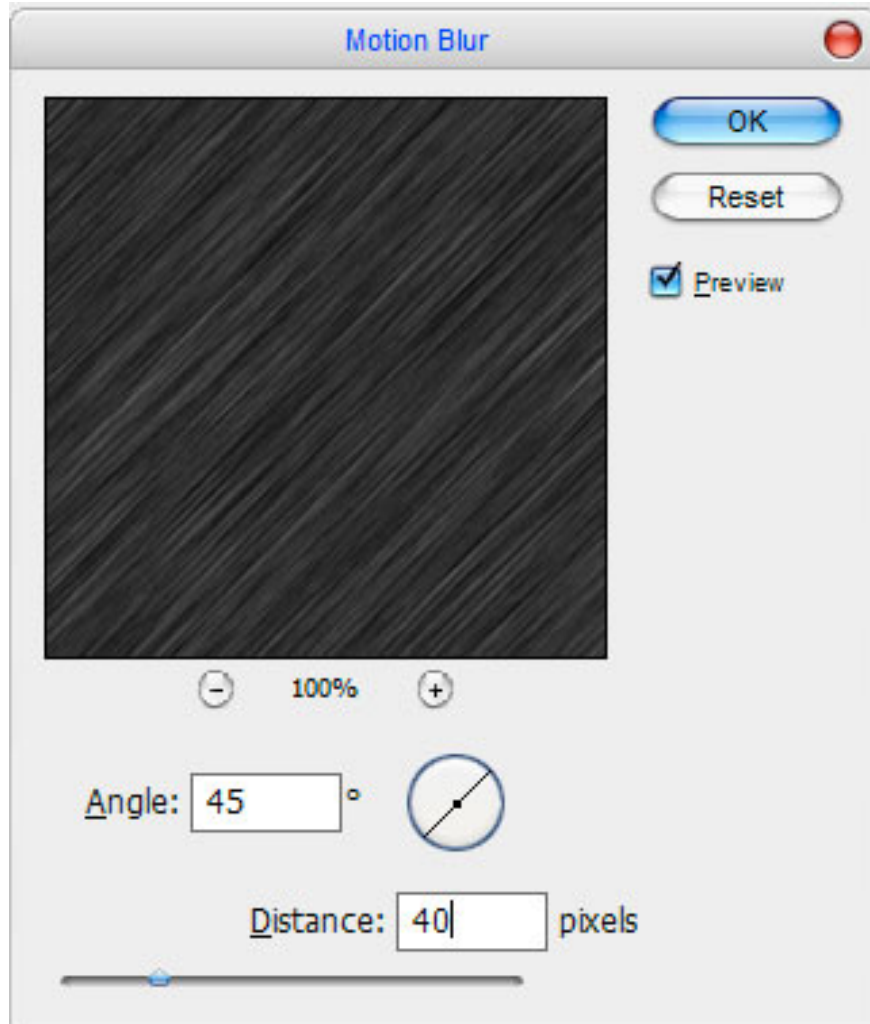
The next step is to create a new layer, but this layer will fill with black. Then select **Filter> Noise> Add Noise** and adjust the value as shown below:



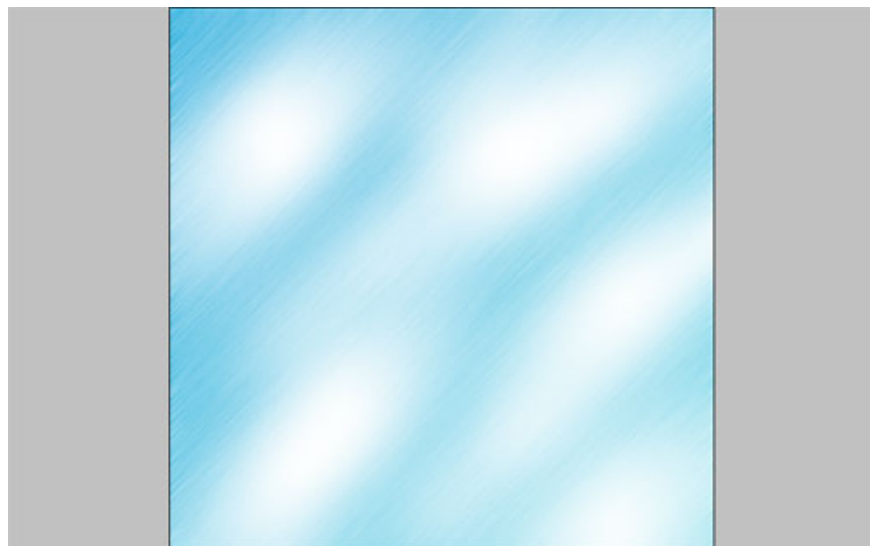
Change **Layer mode** to **Screen** .



Continue to select **Filter**> **Blur**> **Motion Blur** and adjust the values ??as shown below.

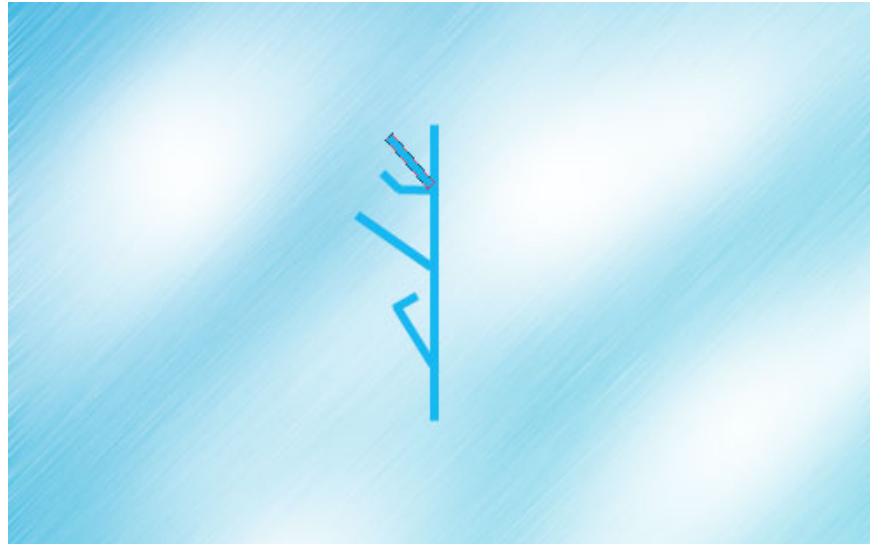


You will get a new image as shown below.



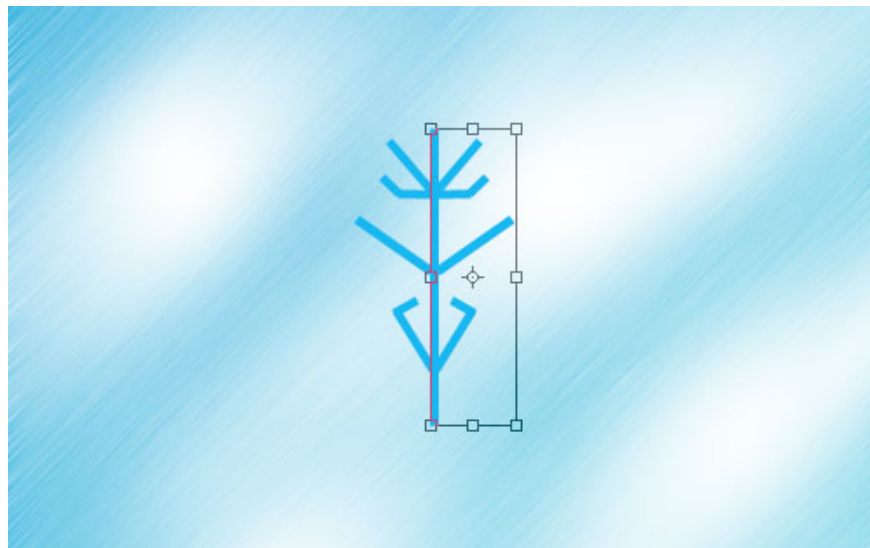
See also: Tutorial for creating animations in Photoshop CS6

After you've created the Background, continue to the snowflake section. Select the **Line Tool** toolbar (remember to change the 5 px Weight value) and change the color value to # **4bb4f0** , using the mouse to draw straight lines as shown below.

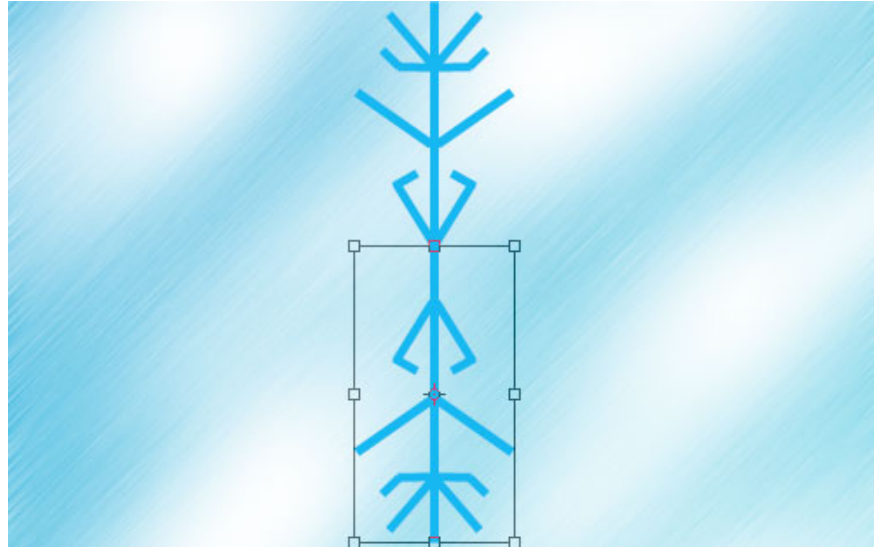


The next step is to merge the above layers into one layer by holding down the **Ctrl** key and clicking on the layers containing the drawn lines to select these layers. Right-click and select **Merge Layers** to merge the layers into one.

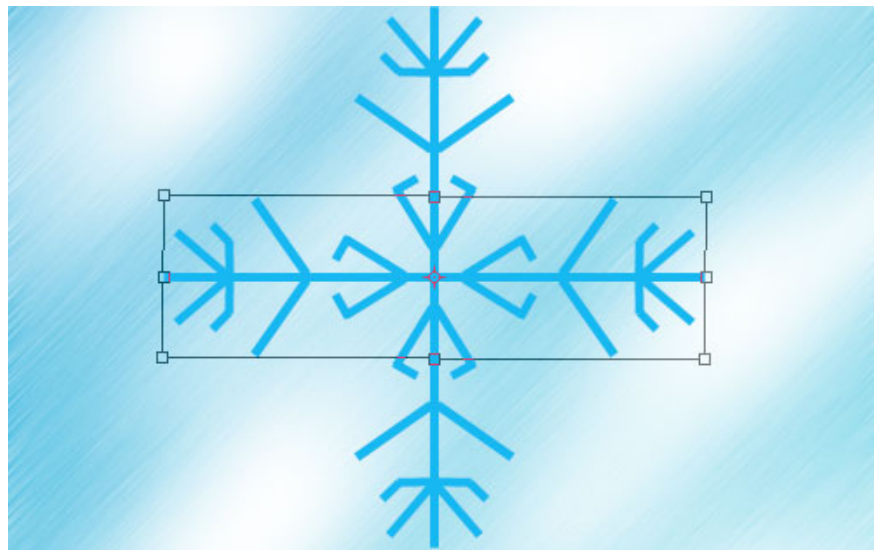
Then press **Ctrl + J** to copy this new Composite Layer. Go to menu **Edit -> Transform -> Flip Horizontal** to create a symmetrical horizontal copy.



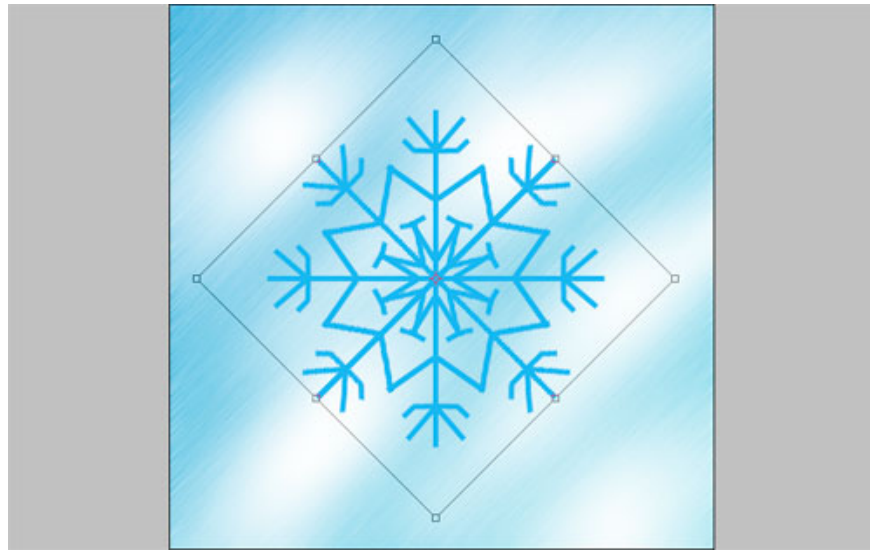
Continue to merge these two layers and press **Ctrl + J** to copy a new merged layer. Select **Edit> Transform> Flip Vertical** to create a symmetrical copy vertically.



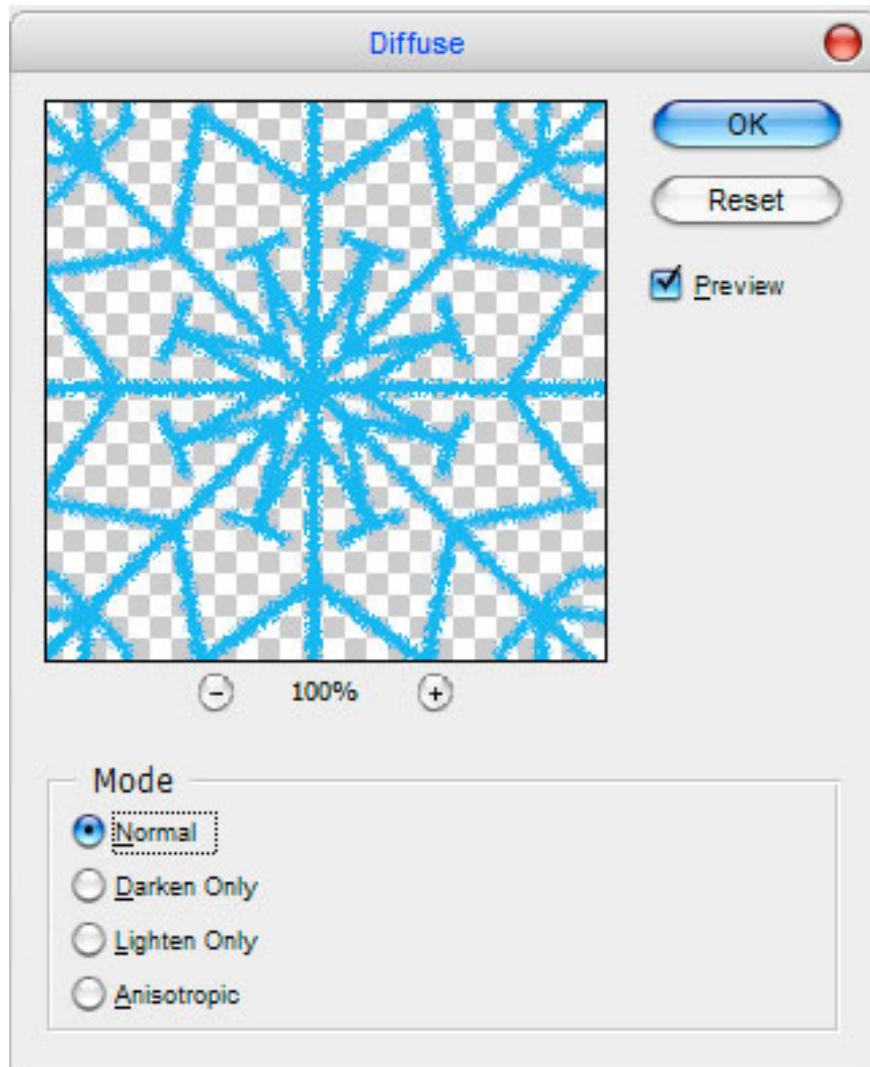
Next, merge these two symmetrical layers together and press **Ctrl + J** to copy the new lump layer. Rotate the copy layer 90 degrees by selecting **Edit -> Transform -> Rotate 90 CW** :



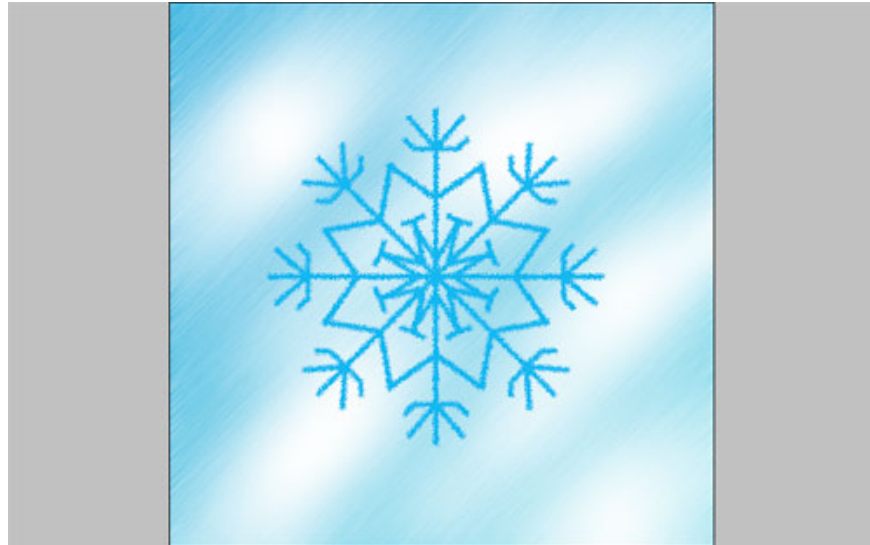
Merge these two symmetrical layers, continue pressing **Ctrl + J**. Select **Edit> Transform> Free Transform** to copy a new merged layer.



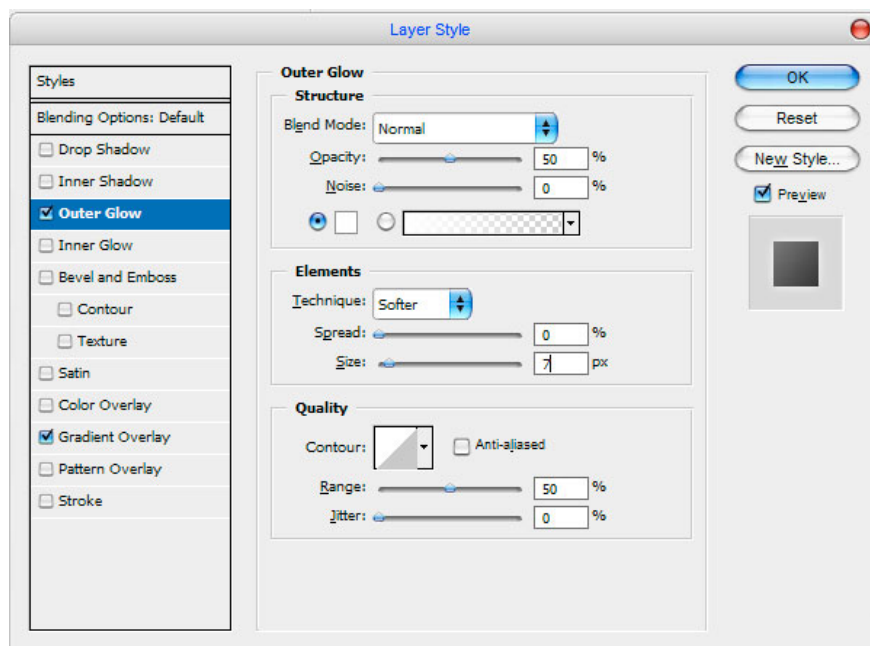
Finally, combine 2 layers containing snowflake shapes. Go to **Filter > Stylize > Diffuse** to adjust the values ??as shown below:

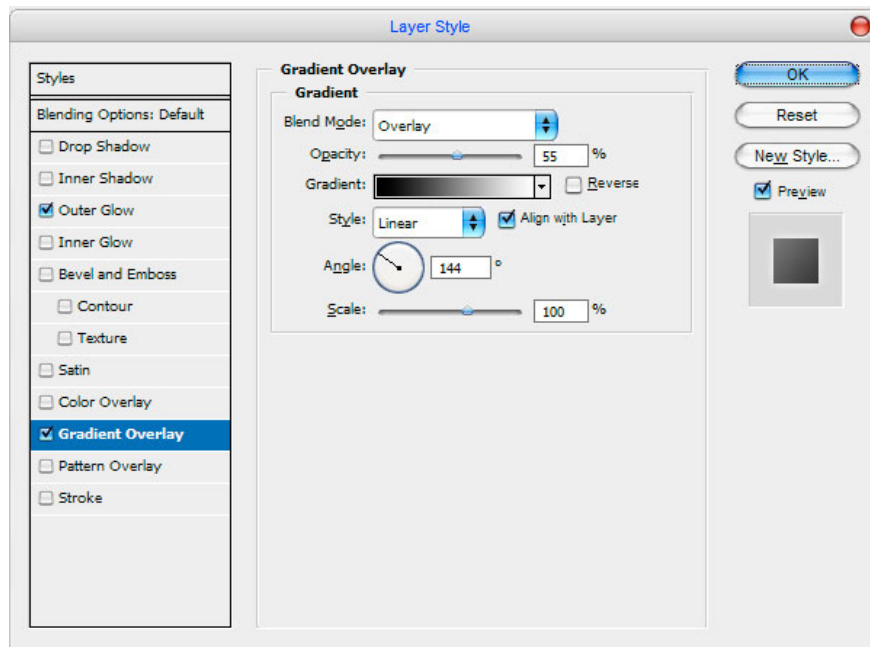


You will get a snowflake shaped like the image below:



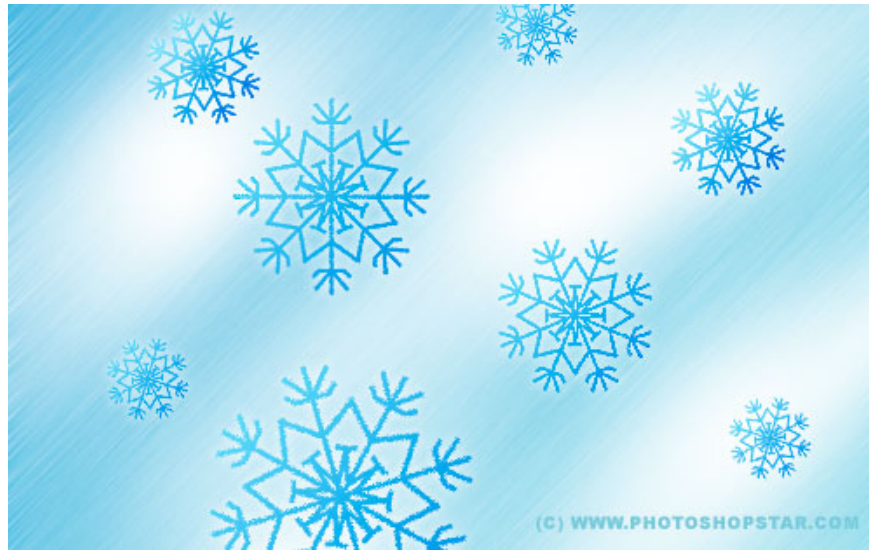
Finally, install the **Outer Glow** and **Gradient Overlay** values ??for the new layer as shown below.





Final result:





Good luck!

You finished reading the article "**How to create snowflakes in Photoshop**" edited by the [TipsMake](#) team. We hope this article has provided you with many useful tech tips and tricks. You can search for similar articles on tips and guides. Thank you for reading and for following us regularly.
