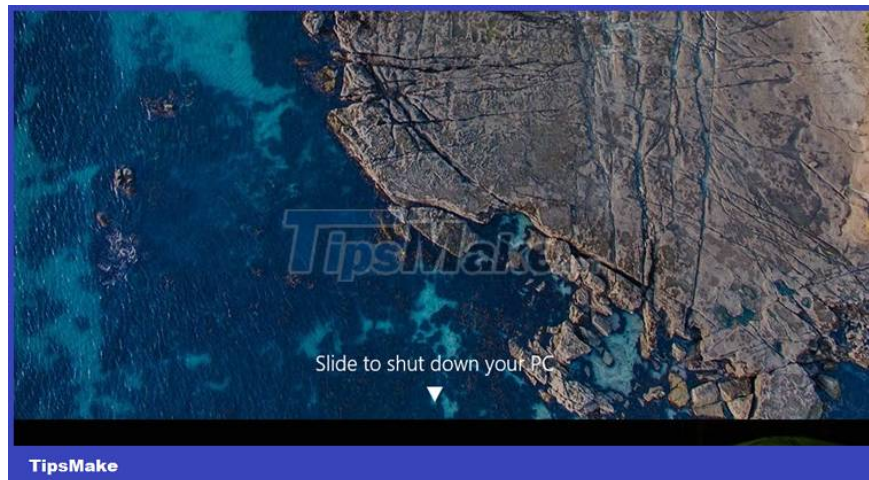


How to create Slide to Shutdown function on Windows 10

The Slide to Shutdown function on Windows 10 helps you shut down quickly, shortening a lot of time to turn off the computer just by sliding the screen down.

Now let's learn with Tipsmake how to create Slide to Shutdown function on Windows 10.



Method 1: Download Shortcut

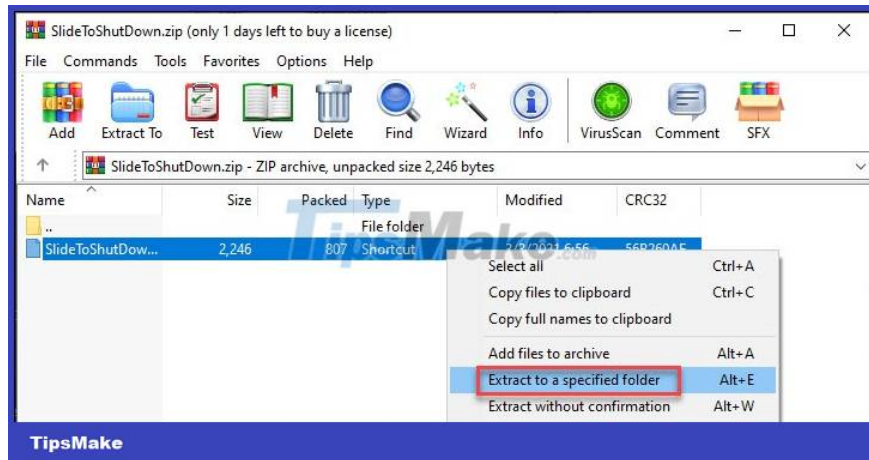
Before trying to create the Slide to Shutdown function on your computer, you can simply download the shortcut that Thuthuatphanmem.vn has created. From here you will easily use the Slide to Shutdown feature without having to create the shortcut yourself.

Step 1: Click on the SlidetoShutdown.zip file below to download the shortcut for the Slide to Shutdown function.

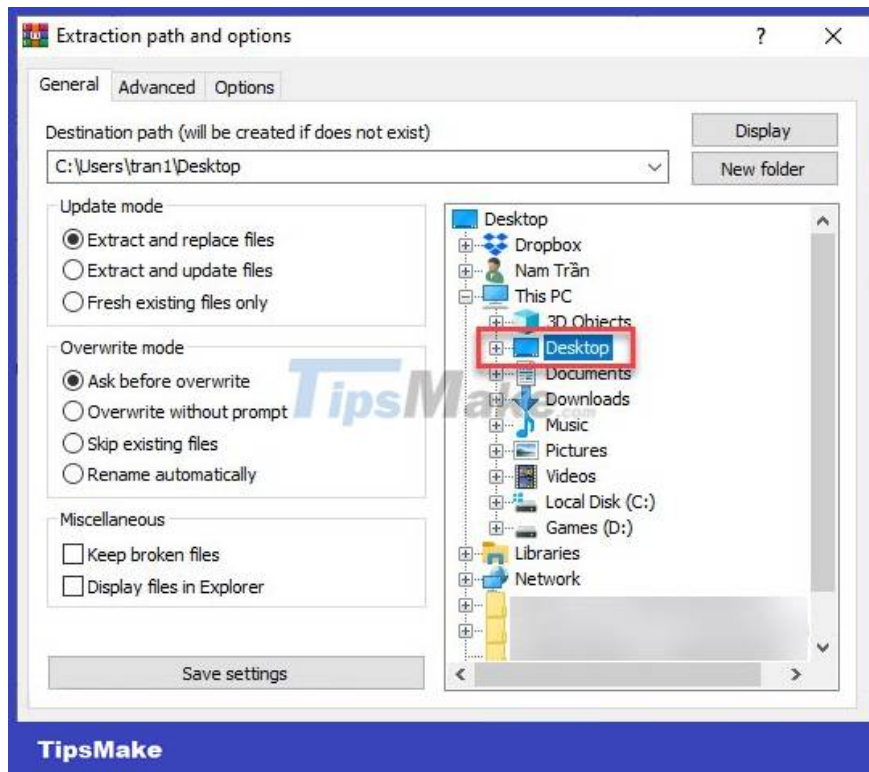
Step 2: Proceed to extract the .zip file. If you use the Winrar extractor, open the file in the usual way (the file will appear at the bottom of the browser).



Step 3: Right-click on the file SlidetoShutDown.exe >> select Extract to a specified folder.



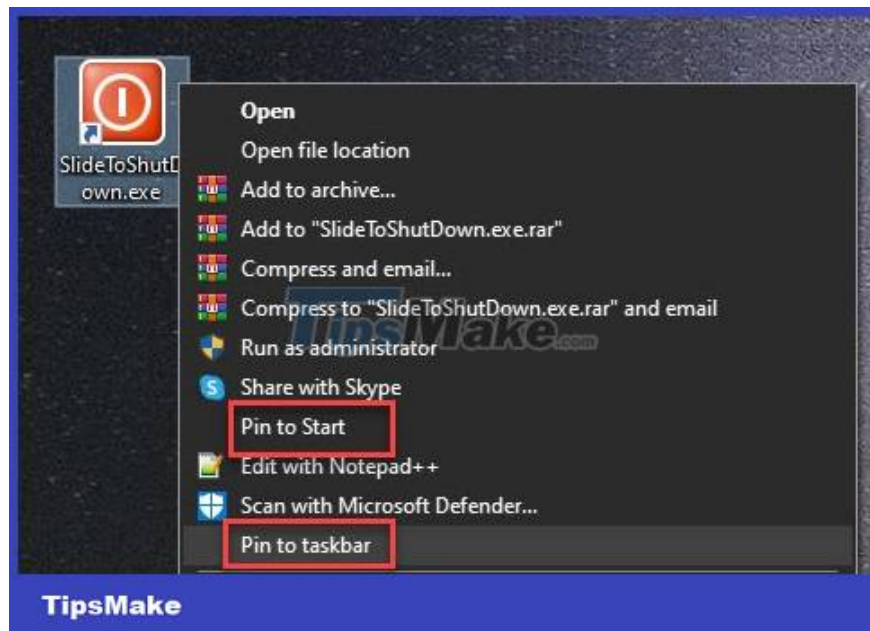
Step 4: Select Desktop under This PC >> Ok.



Step 5: The Slide to Shutdown shortcut will appear on your screen, just click on it and the Slide to Shutdown function will be activated.

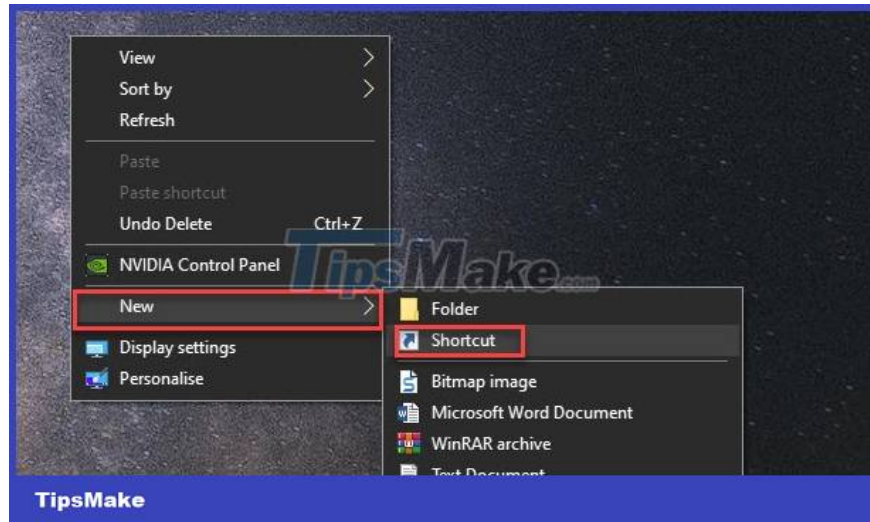


You can right-click it and choose Pin to taskbar (taskbar) or Pin to Start (Start menu), depending on where you want the shortcut to appear.

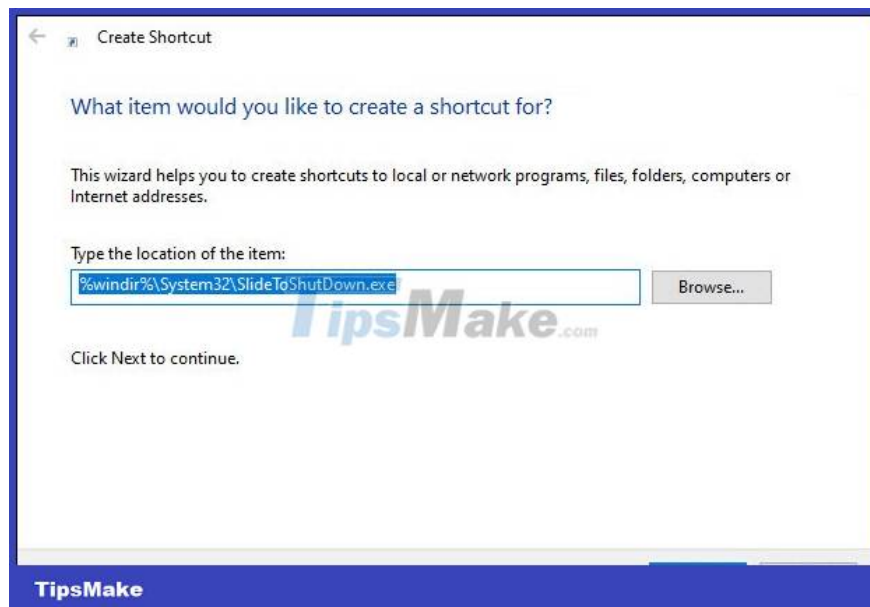


Method 2: Create Slide to Shutdown function on Windows 10

Step 1: Right-click anywhere on the computer screen, select New >> Shortcut.

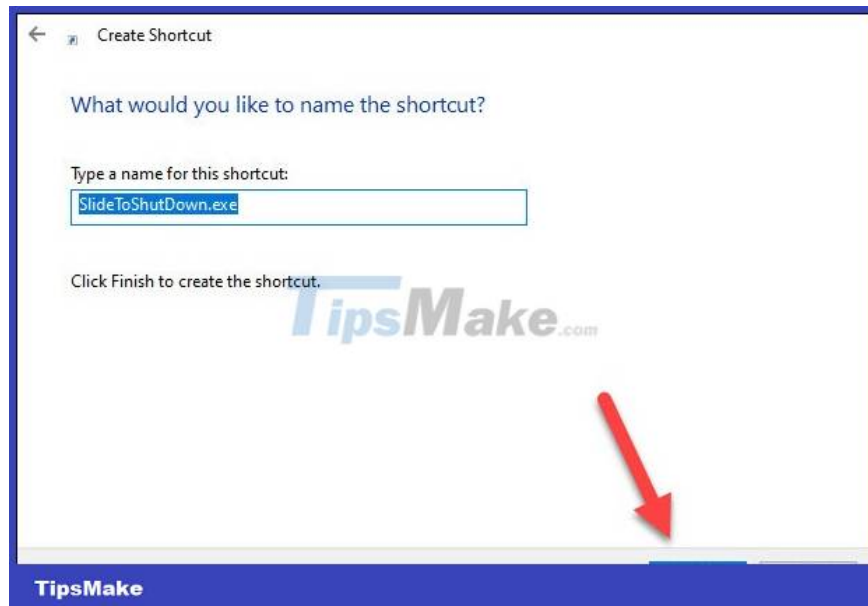


Step 2: You highlight the line below and press Ctrl + C to Copy it. Then Paste (Ctrl + V) into the Type the location of the item box.



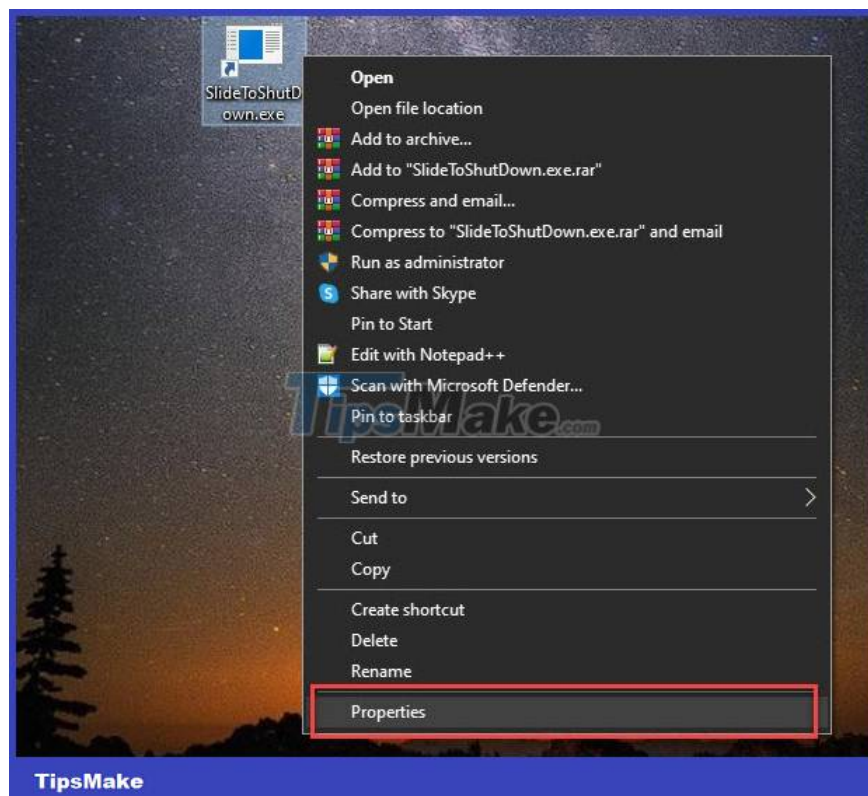
Step 3: Click Next to continue.

Step 4: Name the shortcut the way you want, or leave it as default. Click Finish to complete it.

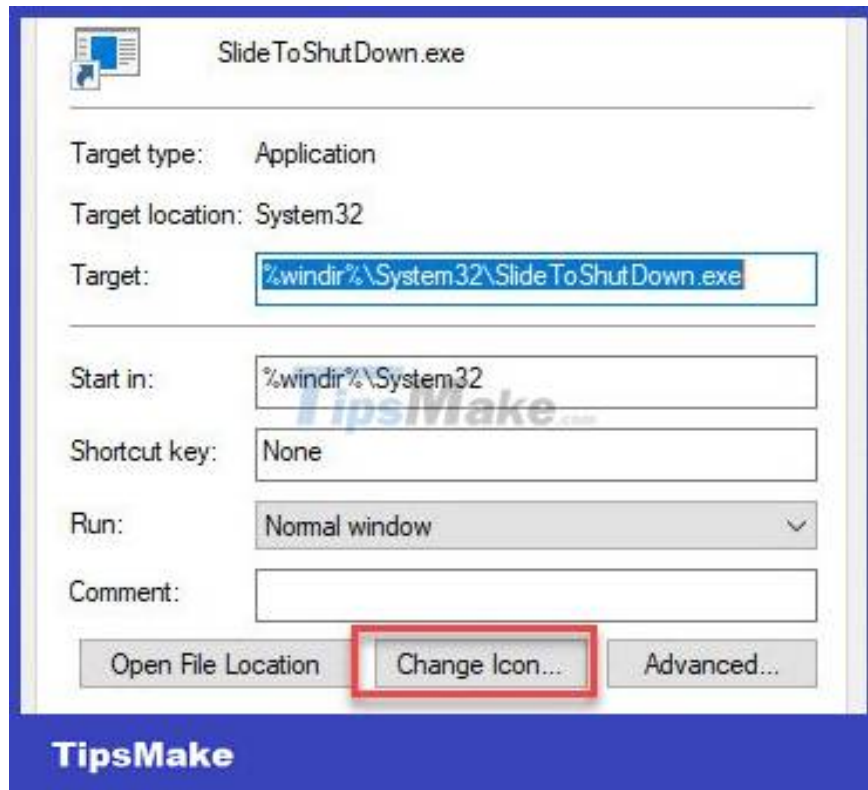


Step 5: When the shortcut appears on the main screen, you can already use the Slide to Shutdown feature right away.

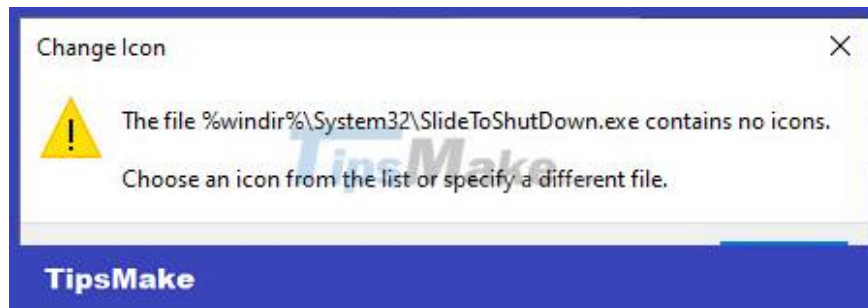
But to make this shortcut a little more eye-catching, right-click it and choose Properties.



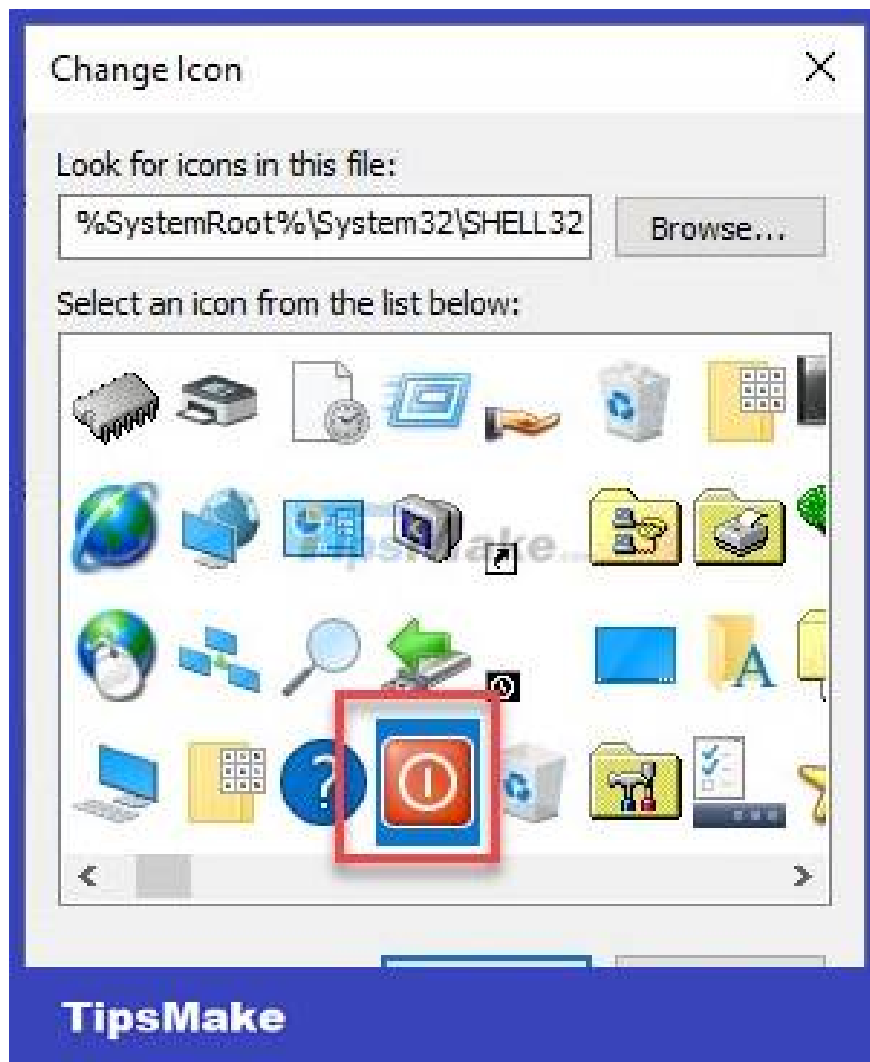
Step 6: Select Change Icon... in the pop-up window.



Step 7: Click OK when there is a notification.



Step 8: Click the icon with the red shortcut button, or any other icon you like. Then click OK to save.



Now the SlidetoShutdown button is ready to use. You can also right-click to Pin to Taskbar or Pin to Start, depending on where you want it to appear.

And that's how to create Slide to Shutdown function on Windows 10, good luck!

You finished reading the article "**How to create Slide to Shutdown function on Windows 10**" edited by the [TipsMake](#) team. We hope this article has provided you with many useful tech tips and tricks. You can search for similar articles on tips and guides. Thank you for reading and for following us regularly.