

How to create PowerPoint slide frames

When users add a frame to a PowerPoint slide, the slide show will look better, attracting viewers.

For PowerPoint presentations to be more beautiful and artistic, most users create PowerPoint wallpapers or can customize backgrounds such as blurring PowerPoint backgrounds. In addition, we can also add slide frames, borders to PowerPoint slides.

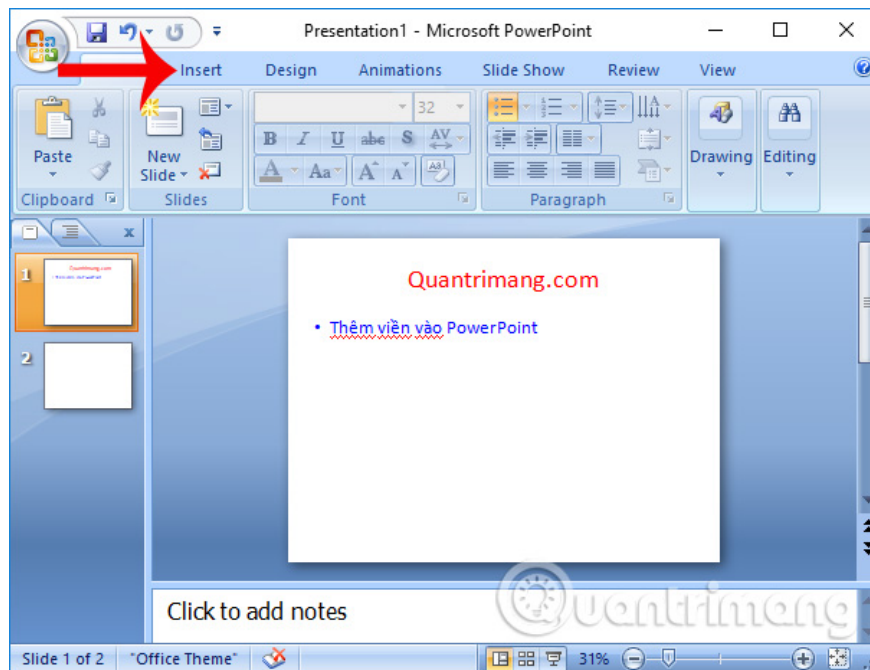
We can also add borders to Word to make the document look more eye-catching, especially when you make the cover page of the document, the best document, etc. However, the creation feature is not available on PowerPoint. Border like on Word. The following article will guide you how to add borders to PowerPoint slides.

1. 50 alternative slideshow applications for PowerPoint
2. How to reopen Word, Excel or PowerPoint files when closed but not saved yet?
3. How to insert text into images in PowerPoint

How to add a slide frame on PowerPoint

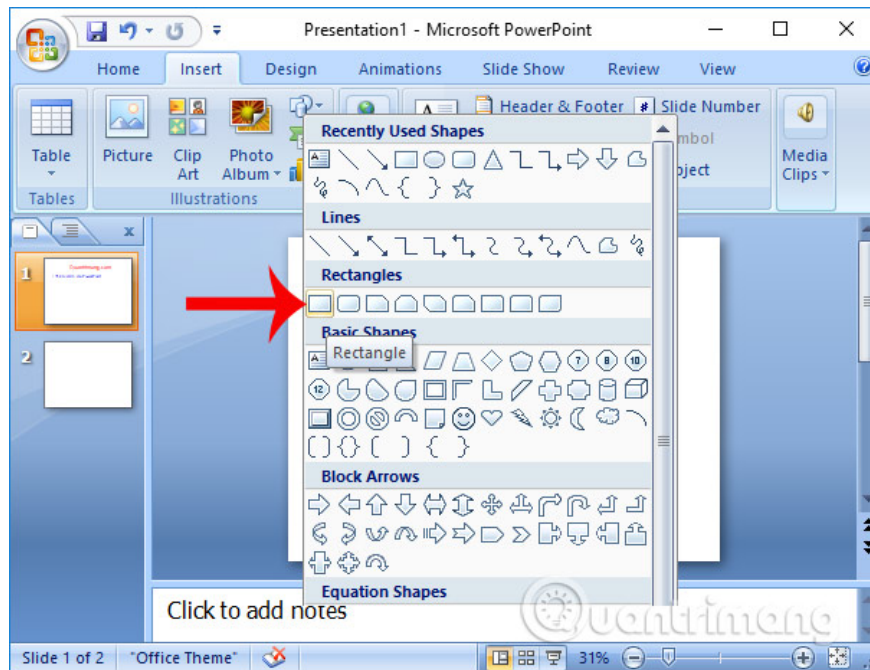
Step 1:

In the PowerPoint slide show interface, click on the **Insert tab** .



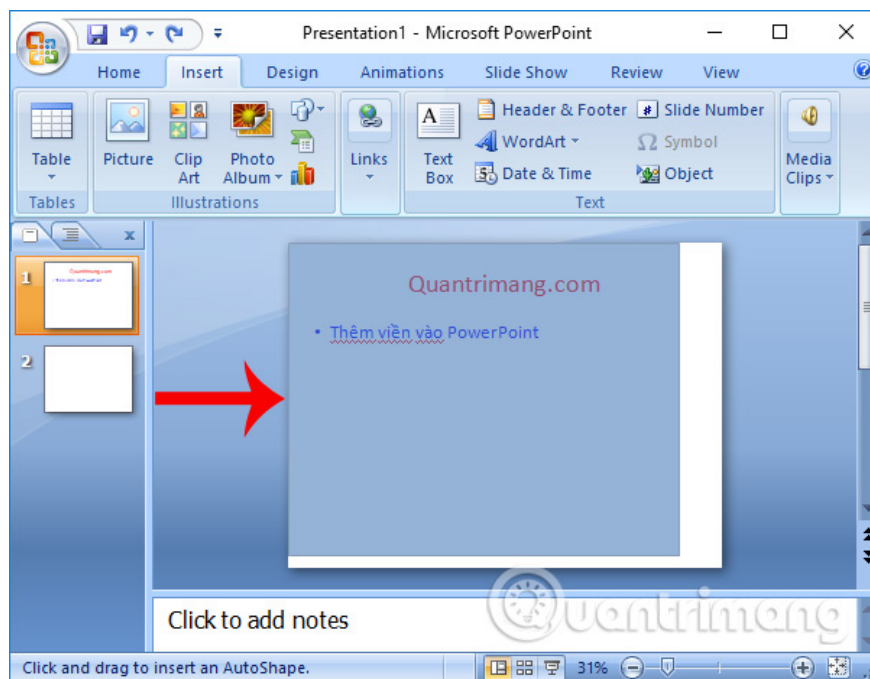
Step 2:

Then select **Shapes** and then click on the rectangular border frame in **the Rectangles** section .

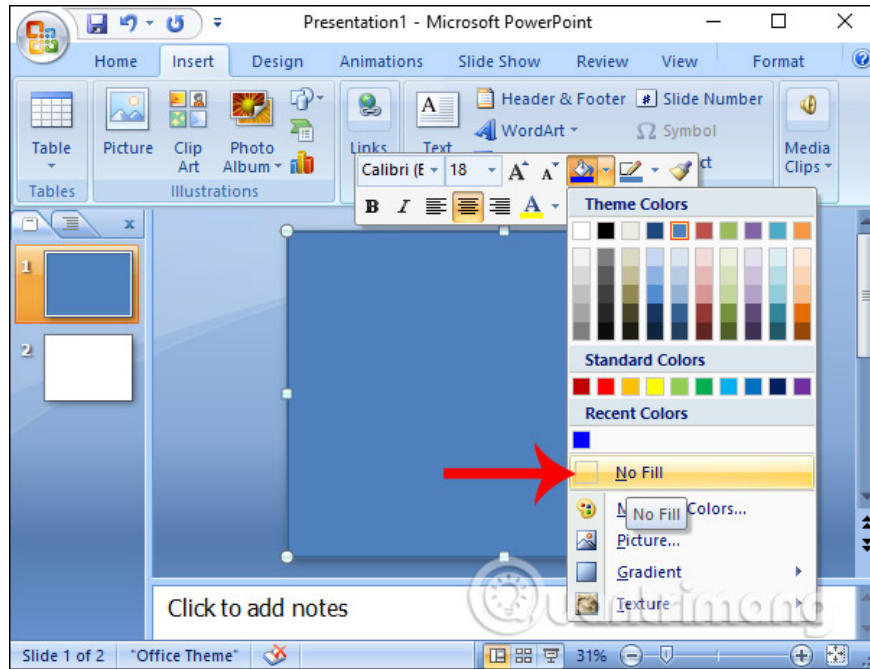


Step 3:

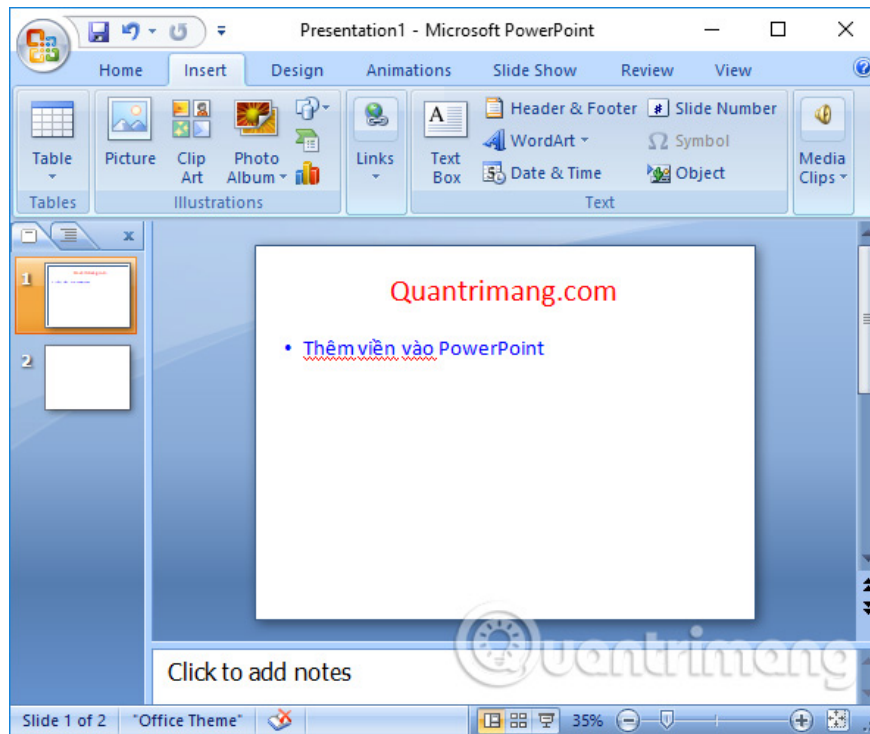
Next click on a point on the corner of the slide and drag the frame bar you want to create.



After dragging the border frame, you will see the blue border frame and cover the entire text on the slide. Right-click on the slide and select the paint bucket icon, then click on **No Fill** .

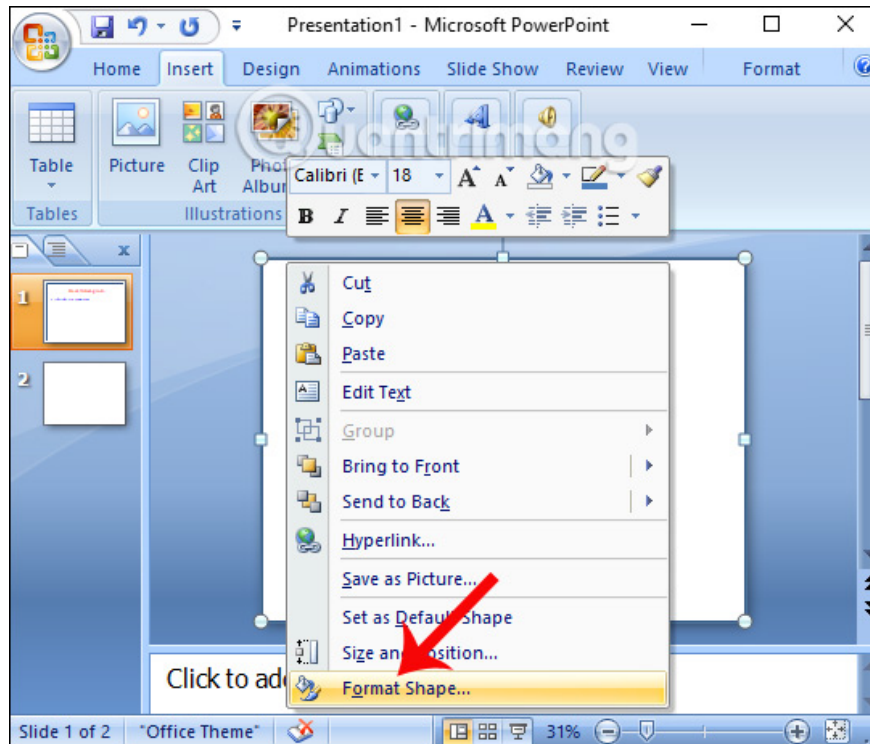


So the blue background disappears, but only creates the border for PowerPoint slides.



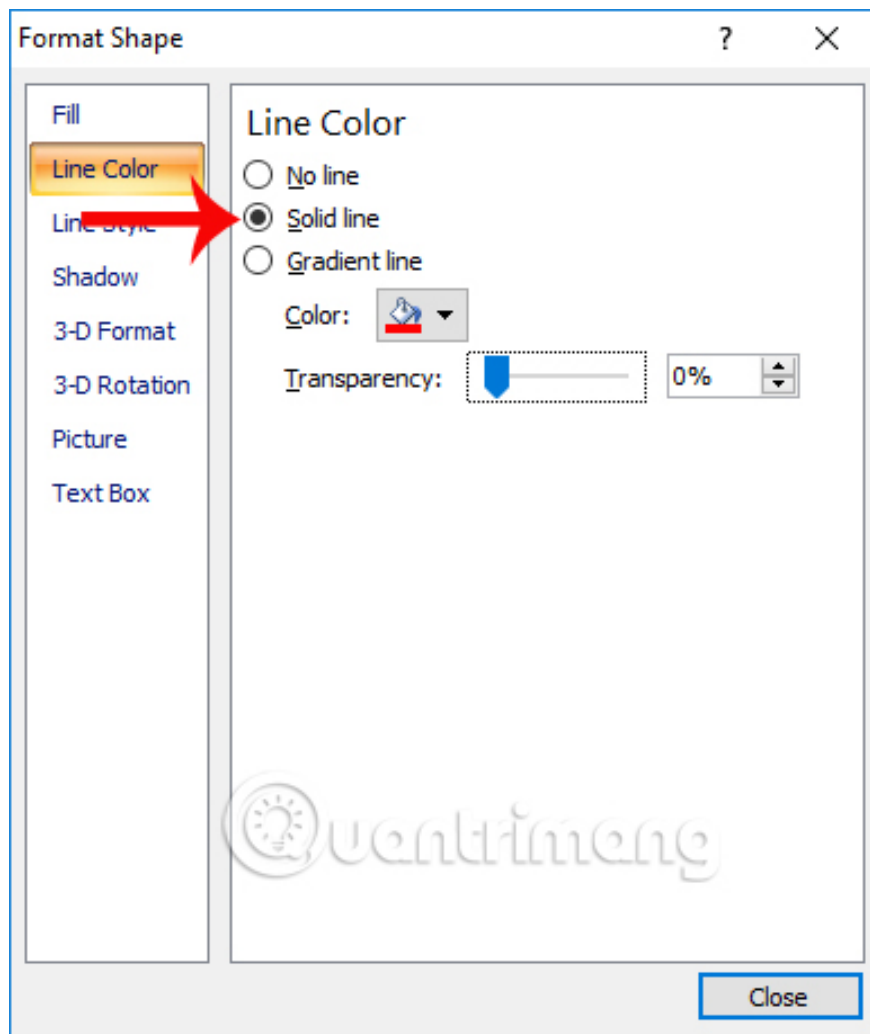
Step 4:

In case you want to change the frame for slides in different formats, right-click on the frame and choose **Format Shape** .

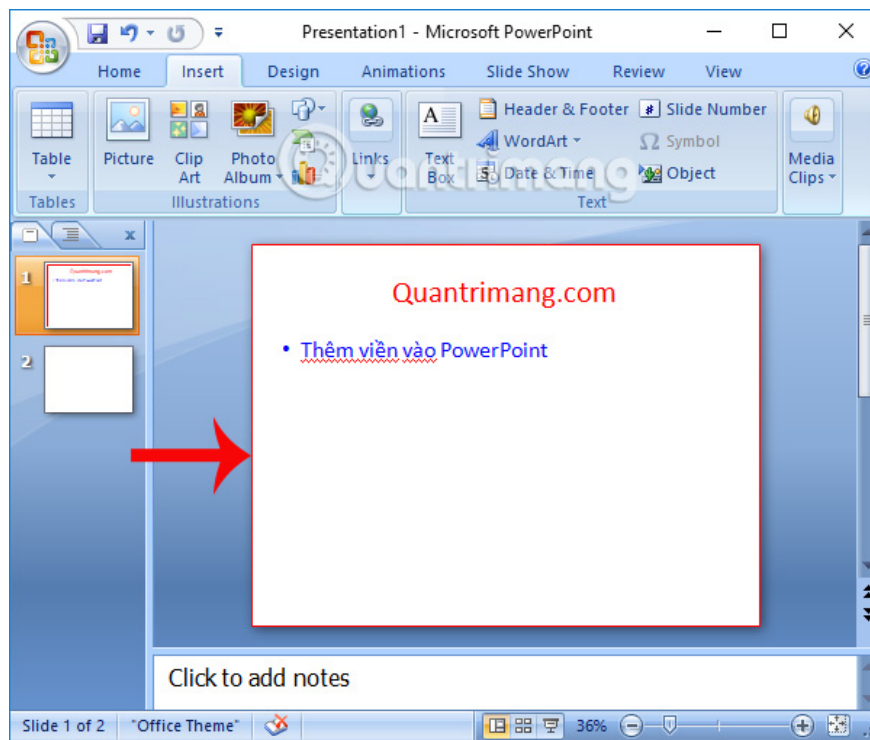


Step 5:

In the Format Shape dialog box, select **Line Color**> **Solid line** and click **Color** to select the color for the Powerpoint border. You can change the thickness for the border when adjusting the horizontal bar in Transparency.

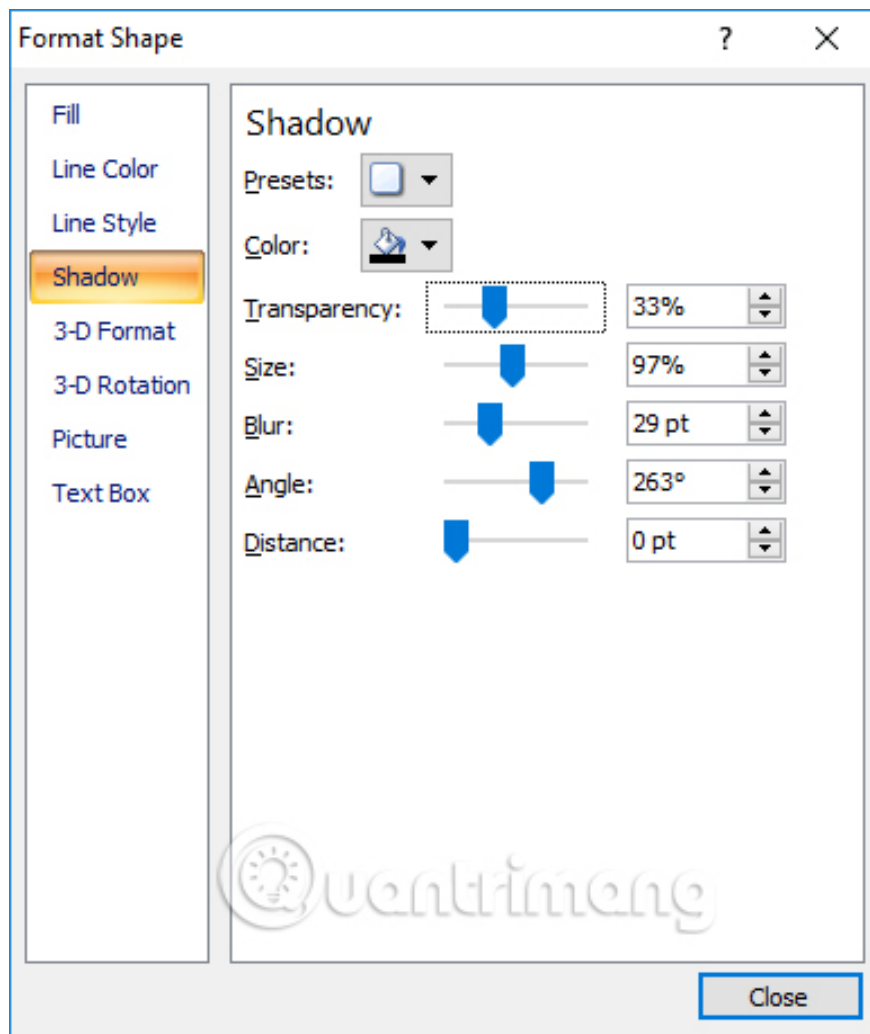


PowerPoint slide borders will be added as shown below.

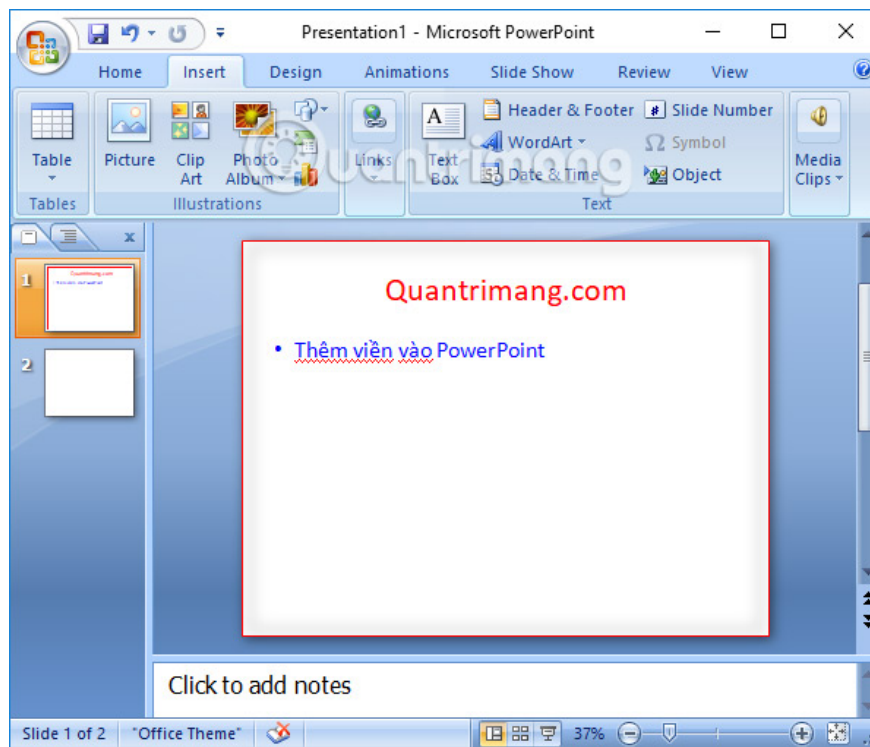


Step 6:

Also at Format Shape interface select Shadow to create the shadow and adjust the shadow level at the Transparency horizontal bar.



Finally we add the background image to the slide show. To delete PowerPoint slide frames, users just need to click on the border frame and press the Delete key to delete the border frame.



With the above article, users already know how to add borders to slides on PowerPoint, before and after adding PowerPoint backgrounds. Presentations will become more attractive when you create borders for each slide, then you can create more borders or shadows for the border color.

Video tutorial to create a border for PowerPoint slides

I wish you all success!

You finished reading the article "**How to create PowerPoint slide frames**" edited by the [TipsMake](#) team. We hope this article has provided you with many useful tech tips and tricks. You can search for similar articles on tips and guides. Thank you for reading and for following us regularly.