

How to create photo effects on Photoshop

You can create a photo frame right on Photoshop with a very simple way to do it.

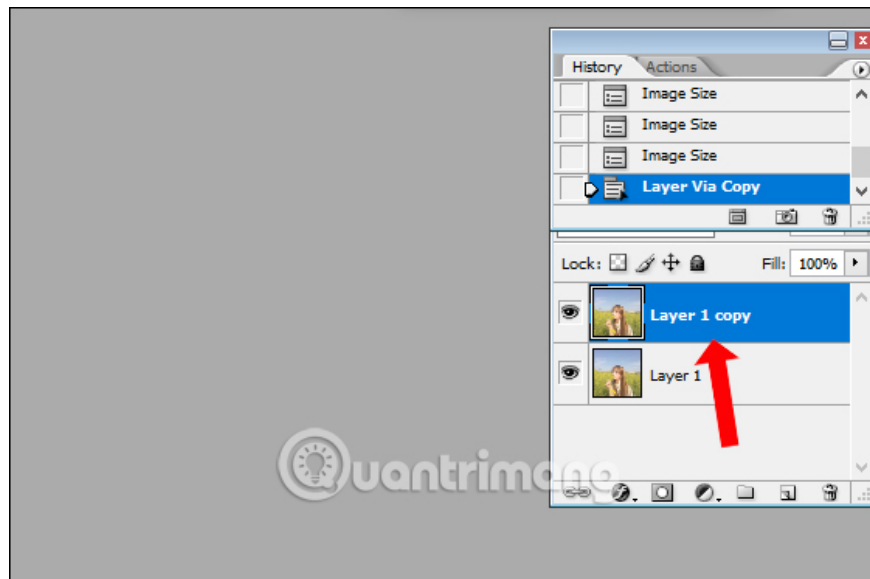
To create a frame for photos, we will often think of online framing applications and services. However, even on Photoshop, there is a tool to create a photo frame, with a very simple way to do it. There are many ways to create frames for photos in Photoshop. The following article will guide how to add a photo frame effect in Layer Style in Photoshop.

1. These framed art apps for phones
2. The best photo compositing software on computers, iPhone, Android
3. How to use PicPlayPost to merge, create frames for videos

Instructions for creating frames in Photoshop

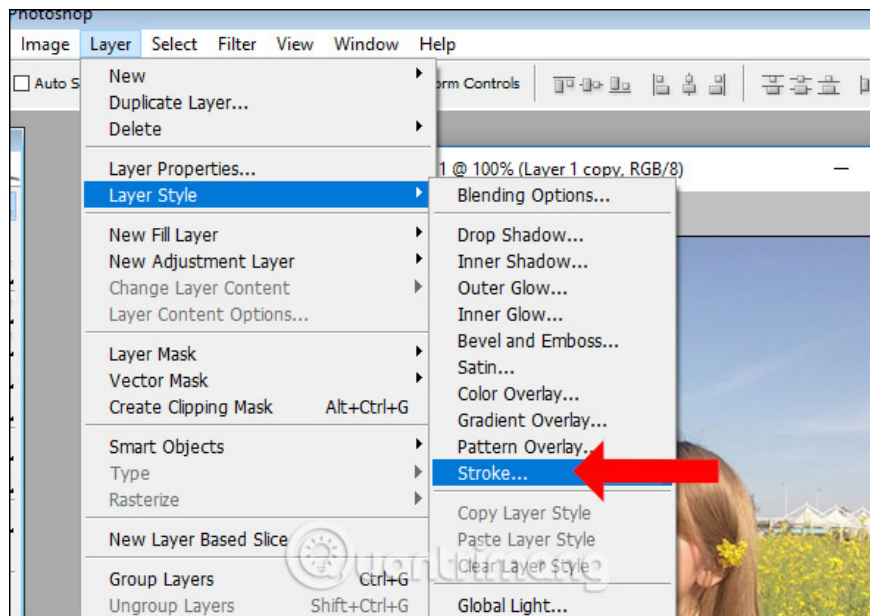
Step 1:

Open the image in Photoshop and press **Ctrl + J** to duplicate the layer for the current image.



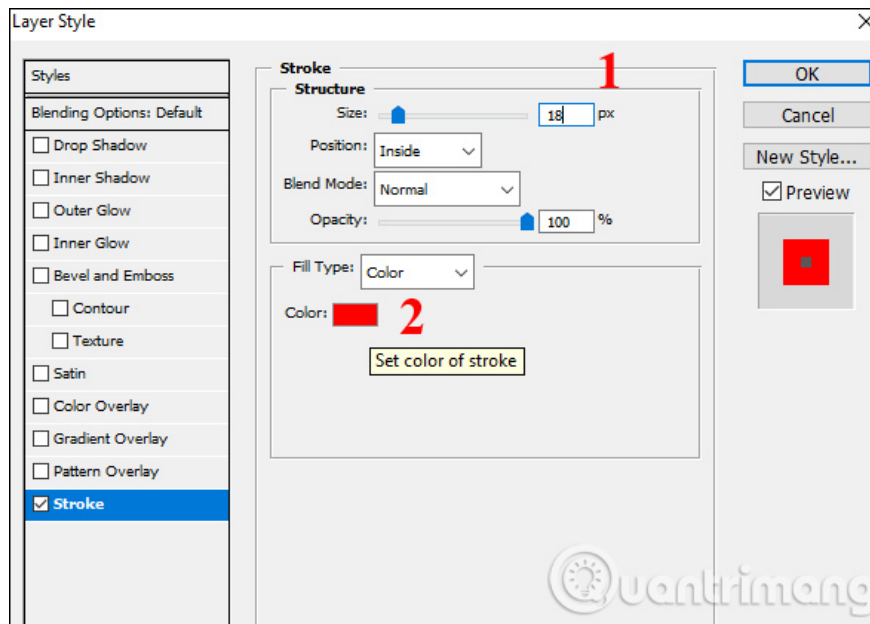
Step 2:

Continue to click on the **Layer** and then **select Layer Style** and choose **Stroke** .

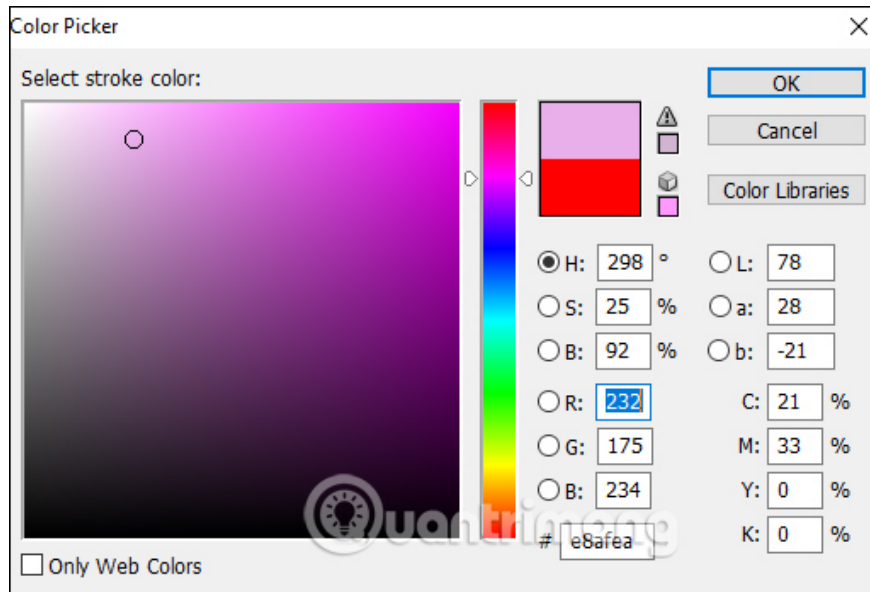


Step 3:

The **Layer Style** dialog box appears. In the **Size bar**, select the parameter about 15-30 to create the frame size. In the **Position** section, select **Inside** to display the image inside the frame. Then click on the color box in the **Color** section .

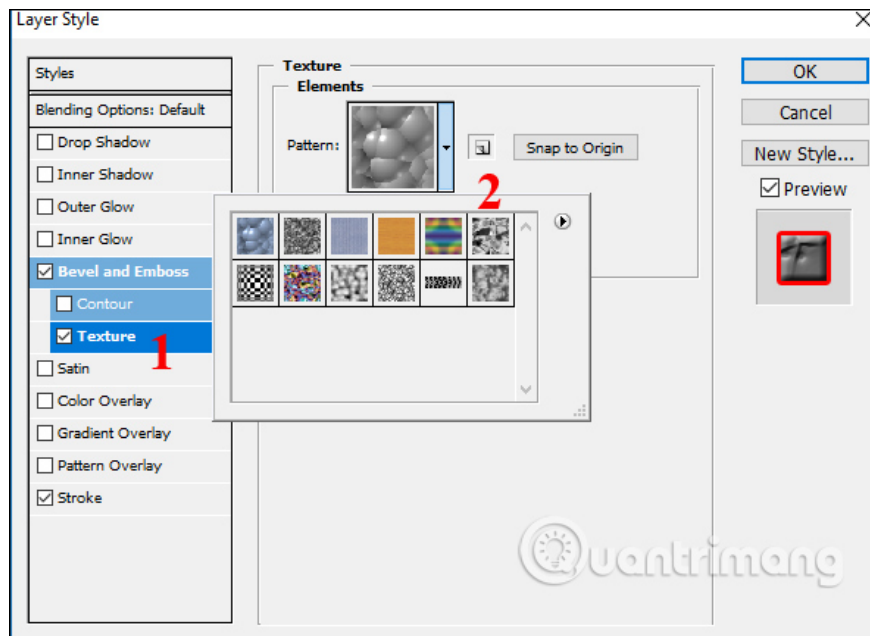


The color palette is available for users to choose the color they want to use as well as the cool colors depending on the image being used. Click OK to select a new color.

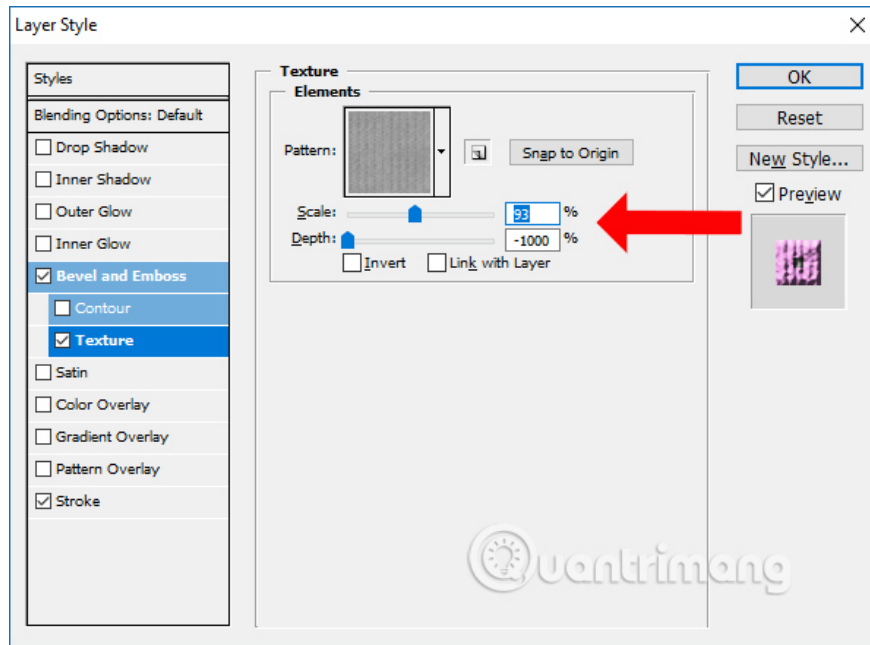


Step 4:

Continue clicking on **the Texture** . Look at the content on the right of the **Pattern** section and click on the arrow to expand the effects for the frame. Click on the type of effect you want to use.

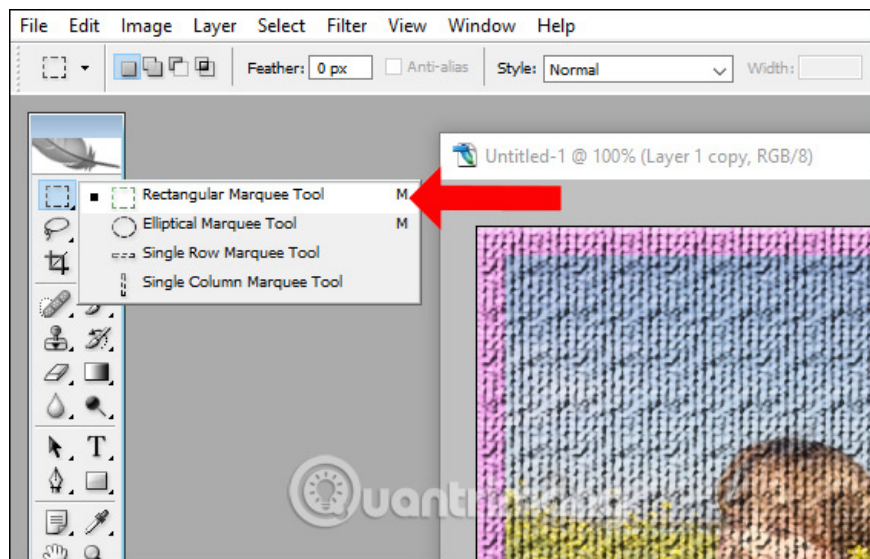


Next, customize the Scale effect accordingly and click OK.

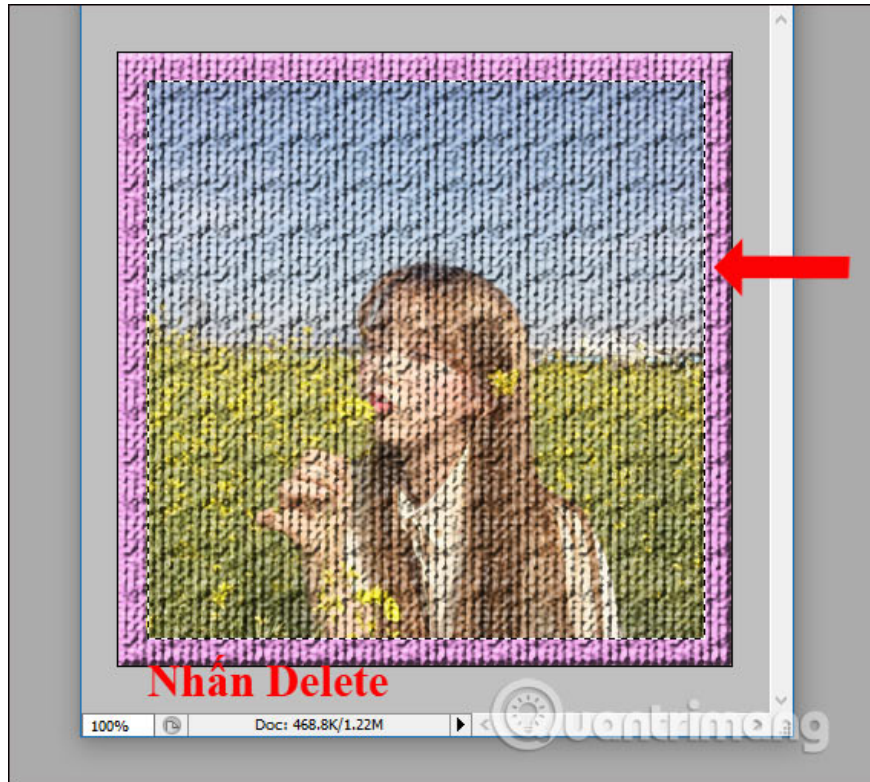


Step 5:

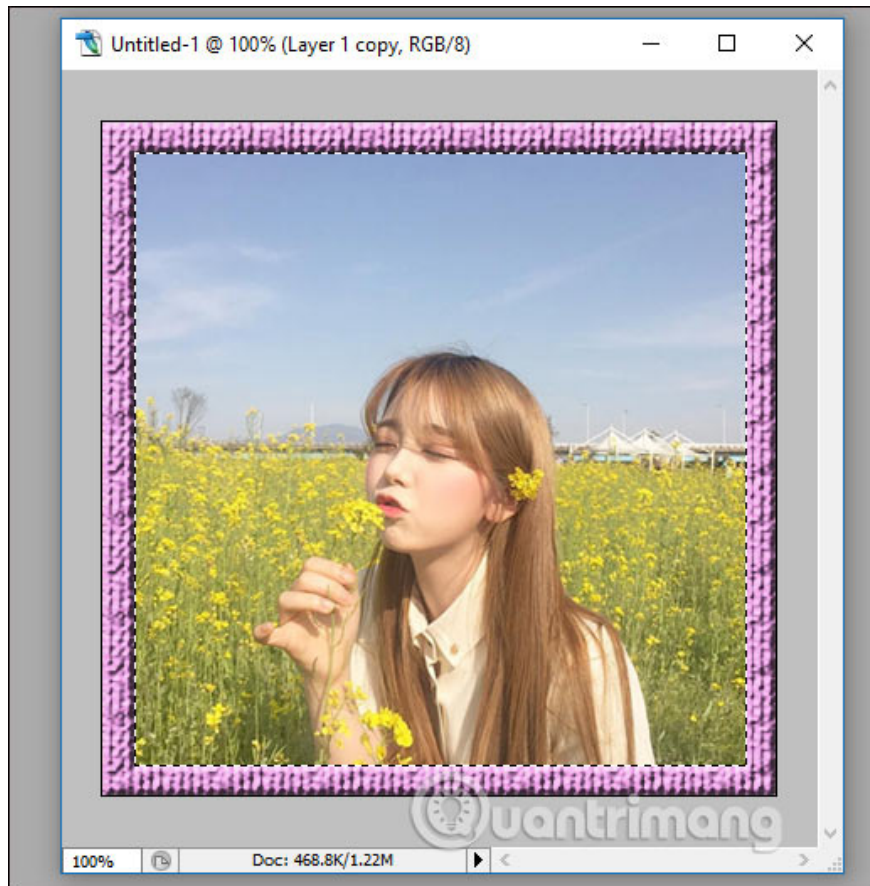
Go back to the Photoshop image interface, click on **the Rectangular Marquee Tool** in the toolbar to the left of the interface.



Now select **the main image** in the frame and **press Delete** . So the effect will be deleted in the image, only retaining the effect in the photo frame.



As a result, we will get the effect frame as shown below.



In case the frame color does not match, go back to Layer Style> Stroke and change the color to Color.



So you have created a frame with effects for photos on Photoshop already. If you create a frame with a simple color, just adjust it in the Stroke section, without pressing the Texture.

See more:

1. How to use VSCO "magic tricks" photo editing with filters
2. The best photo compositing software on computers, iPhone, Android
3. Applications that create ultra-toxic animations on Android and Iphone phones

I wish you all success!

You finished reading the article "**How to create photo effects on Photoshop**" edited by the [TipsMake](#) team. We hope this article has provided you with many useful tech tips and tricks. You can search for similar articles on tips and guides. Thank you for reading and for following us regularly.