

How to create multi-configuration Windows 10 ghost version Microsoft standard

Instructions on how to create a Windows 10 multi-configuration ghost with Microsoft's Sysprep tool. Experience creating the most standard Win 10 multi-configuration ghost

In today's article, I will share with you a very good trick to help you create a multi-configuration Windows 10 ghost with Microsoft's Sysprep tool. With this ghost version, you can use and install it on many computers, many different motherboards.

Unlike the 2 previous tutorials on creating polymorphic ghosts, the way to do this will be completely different that we will not use any 3rd party software, but instead. We will use all tools provided by Microsoft.

I. Ideas and processes?

Reinstalling Windows 10 completely new => during the installation process, we will access Audit Mode for the computer to automatically Login to the system with Administrator rights (administrator rights).

=> Then we will use the pair of tools Windows ADK and Microsoft Sysprep to start creating multi-configuration ghost file .

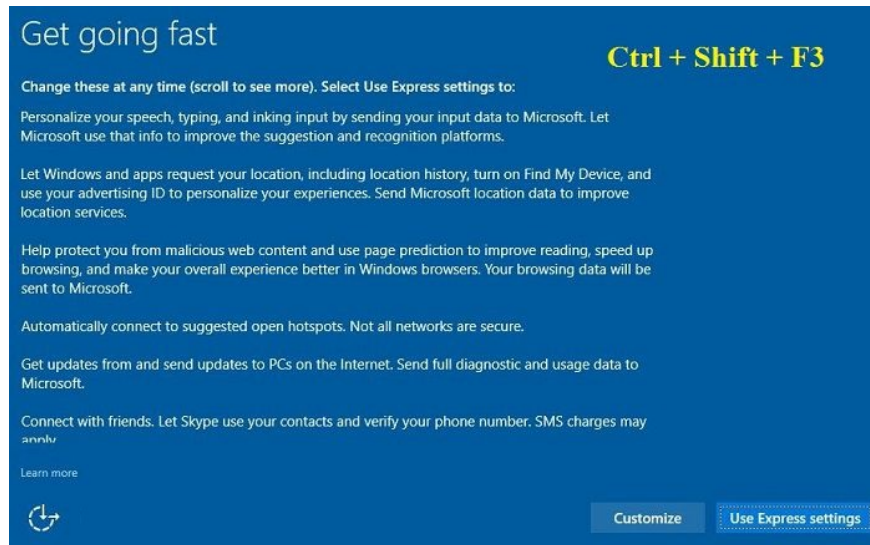
II. Guide to create multi-configuration Win 10 ghost file with Sysprep tool

Please follow each step in turn as the following instructions, please follow step by step 1.

#first. Proceed to install Windows 10

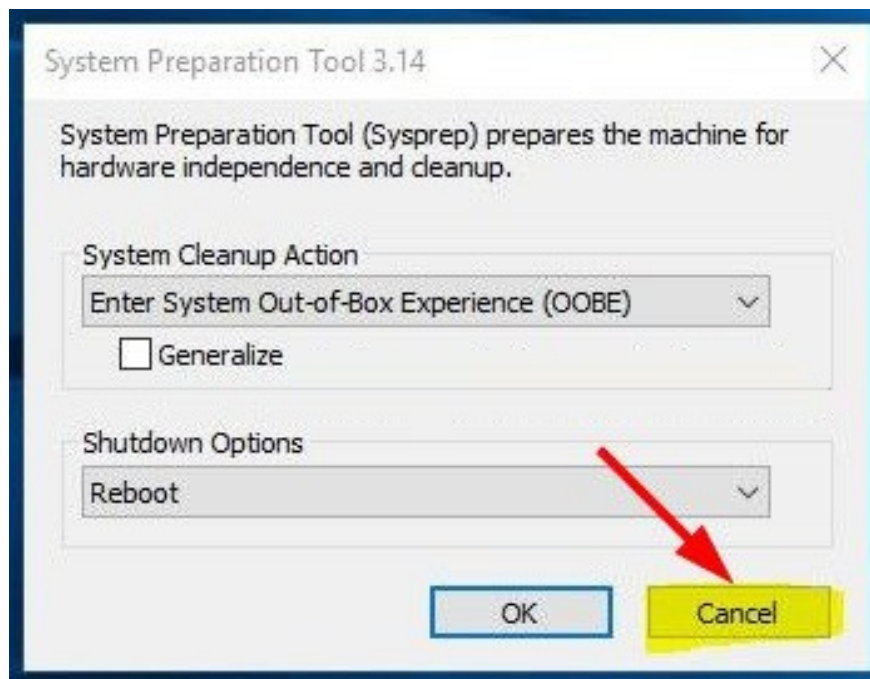
+ Step 1: To install Win 10, you can use Windows 10 installation disc or create usb to install Windows 10 => you can install Windows 10 as usual but go to the Get going fast step as shown below .

=> Then, press Ctrl + Shift + F3 => at this time the computer will automatically Restart and access Audit Mode on Windows 10.



The system will automatically Login with the Built-in Administrator account.

As you can see in the image below, after finishing the booting, the System Preparation Tool window will appear => click Cancel to close this Tool because we have not used it.

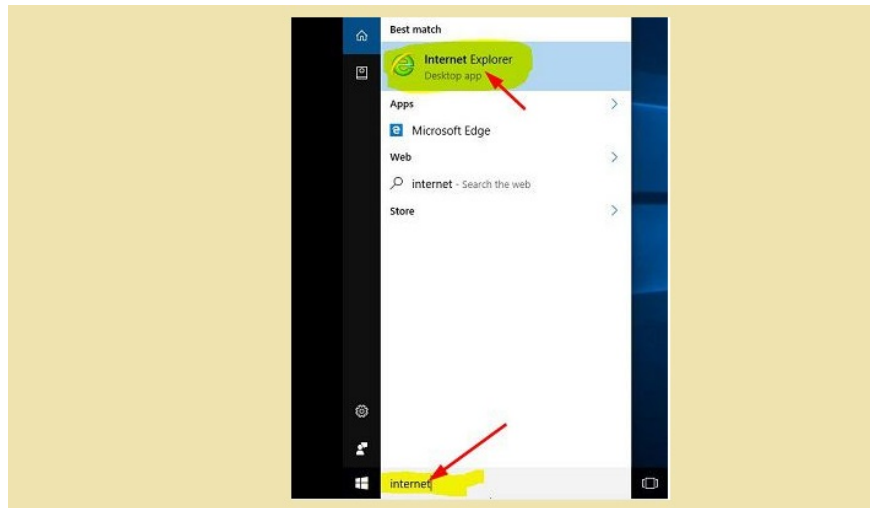


#2. Download the Windows ADK tool and install it on the computer

+ Step 2: Now open your web browser to download Windows ADK tool. Because it is a new version of Windows, we use Microsoft's web browser temporarily.

And one more thing is that we are using Windows in Audit Mode so we can't use Microsoft Edge browser, only IE.

To add a little more, Windows ADK full name is Windows Assessment and Deployment Kit - a tool provided by Microsoft, so you can completely rest assured when using.



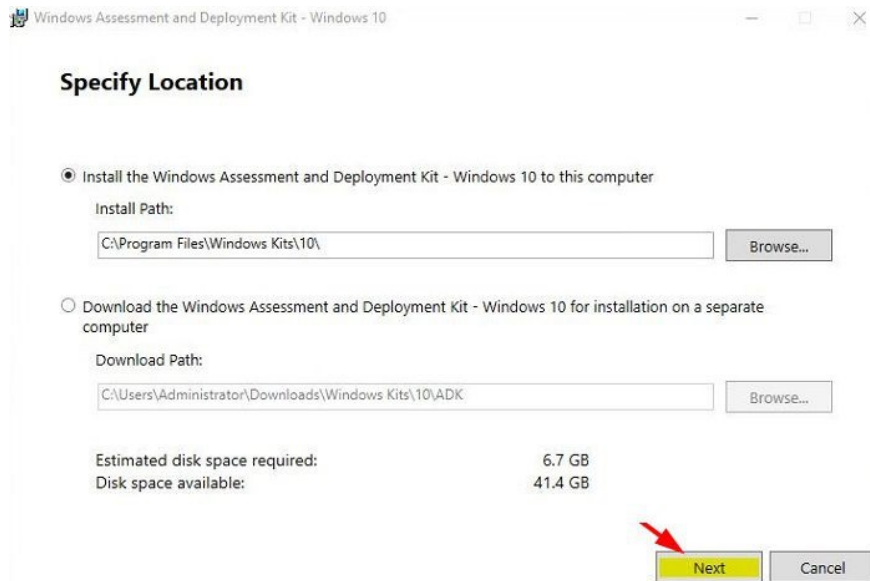
+ Step 3: Search and download Windows ADK tool. If you are using Windows 10 Anniversary (Windows 10 version 1607), please download Windows ADK tool for it [here](#) .

If you use other versions, please click [this link](#) to download the appropriate version.

After downloading the tool => install it on your computer as usual. You note to the Specify Location section, there will be 2 options for you that are:

1. Install the Windows Assessment and Deployment Kit - Windows 10 to this computer: Means to install the program to this machine.
2. Download the Windows Assessment and Deployment Kit - Windows 10 for installation on a separate computer: If you check this option, it will proceed to download the installer so you can install it on another computer.

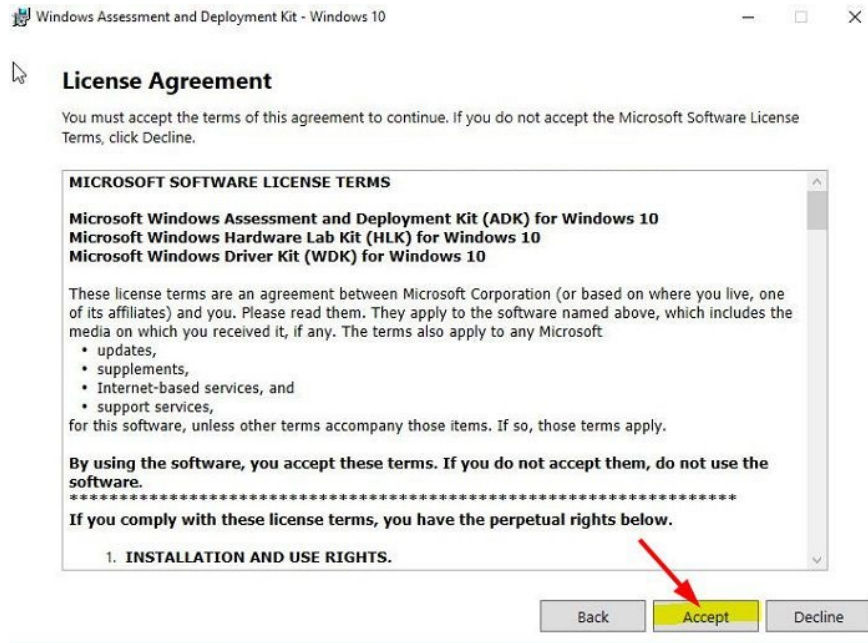
=> We will tick the first option and click Next to continue.



Next, in the Windows Kits Privacy section => check Yes to agree with the above setting and click Next to continue.

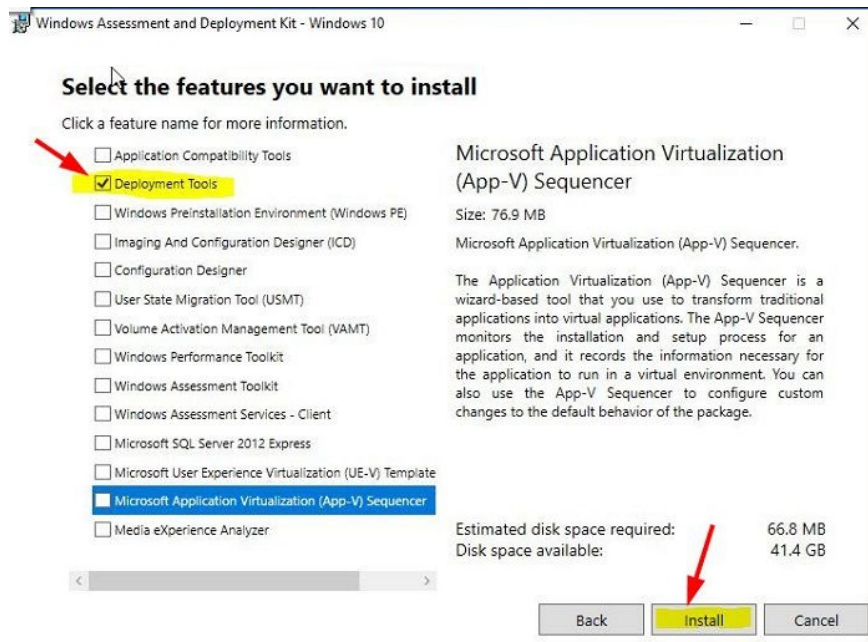


Click Accept to agree to the terms of use.



+ Step 4: Select the installation package. This window will have a lot of tools for you to choose from.

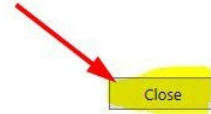
However, here we just need to pay attention to the Deployment Tools => check it and click Install to start the installation.



After the installation is complete, a window will appear as shown below. Click Close to close the window.

Welcome to the Windows Assessment and Deployment Kit - Windows 10!

Learn more about the Windows Assessment and Deployment Kit
Check this box to explore the Windows ADK documentation on MSDN.



3. Install the software you want to integrate into the Ghost version

Yes ! now you need to integrate additional software into your multi-configuration ghost version.

But you need to note one thing is to install WITH OPTIONAL FILTER, which means you should install popular software only, limiting too much integration will make your ghost copy larger.

Note one more thing that on new versions like Windows 8.1 and Windows 10, Microsoft has already provided quite a complete driver , so you do not need to integrate more into the ghost version.



4. Create file File_tra_loi.xml to prepare Sysprep (critical step)

During the process of creating a multi-configuration ghost file with the Sysprep tool, the system will have questions such as what will you install, how to set up, how to license it? . and so on.

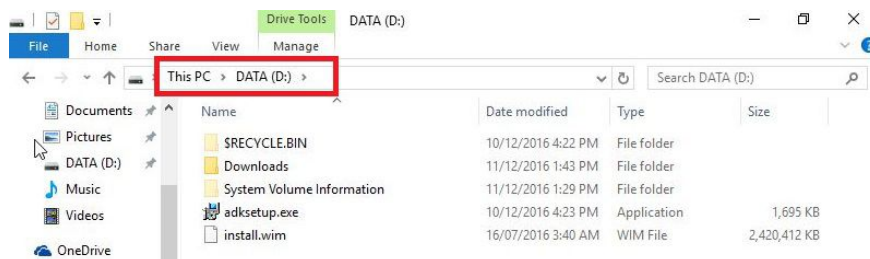
For that, we will need to create a file to answer those questions. This reply file will be saved by Sysprep to the ghost file so that when you extract to another computer, the system will then find this file => and it will complete the installation in a given order.

Okey, now we will configure this file so that the installation system can understand and follow the way they stated.

+ Step 5: Copy the install.wim file to any partition on the computer (D, E, F...)

You are wondering if this install.wim file will get here? Please open the installation disc or install your win usb => then go to the sources => directory to find the install.wim file and copy it out.

In this example, I will copy the install.wim file, which will copy it to the D drive partition.

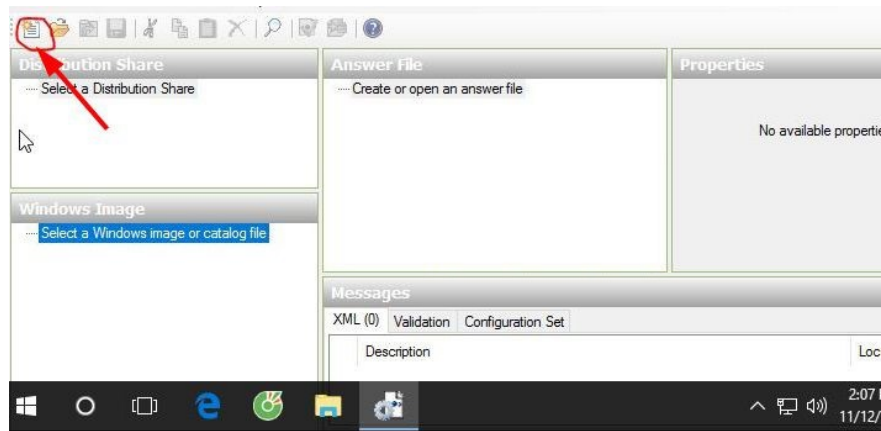


+ Step 6: Now open the Windows System Image Manager tool => click the Start button and do as shown below .



Okey, this is the main interface of the Windows System Image Manager program.

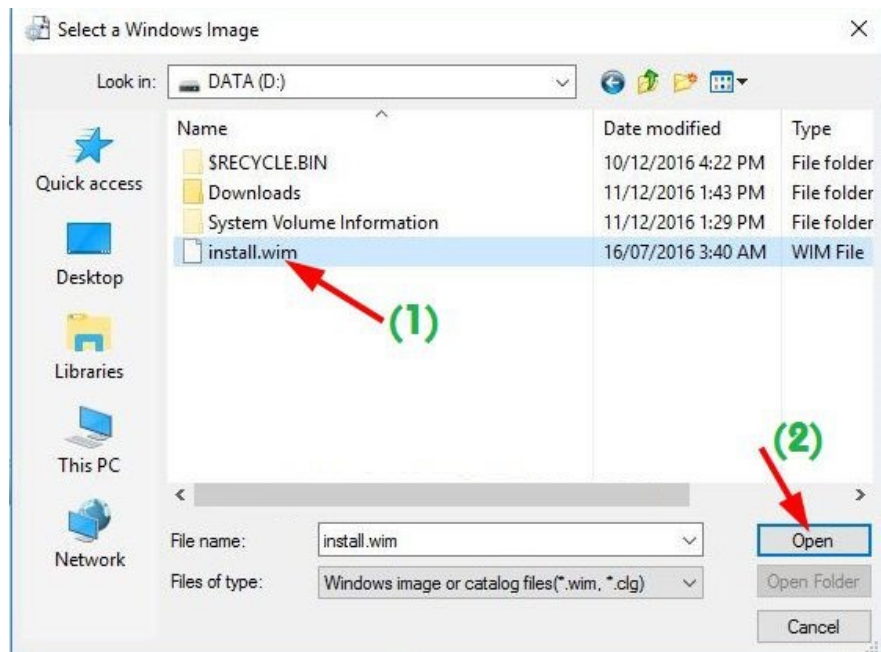
Click File => New Answer File... (Ctrl + N) or click the icon to create a new file as shown below.



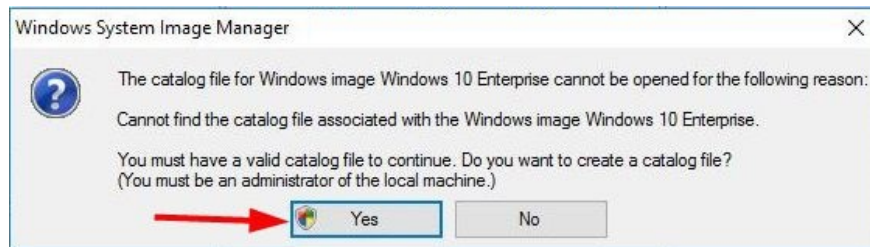
A message window appears, something like that it asks you to open the *.wim file (windows image) to create an answer file. Click Yes to agree to the above.



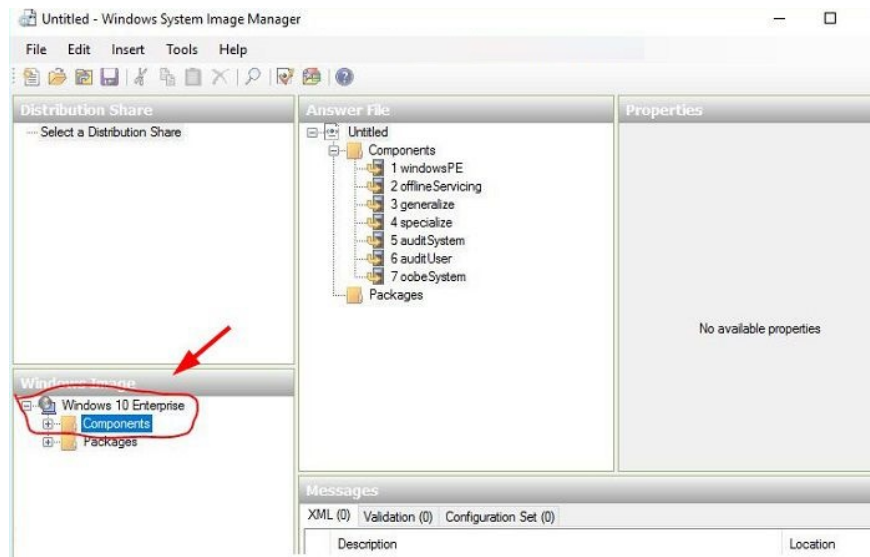
Please choose the path to the location where the install.wim file is located, as in the above example we just copied the install.wim file into the D drive, so now you should choose the path there.



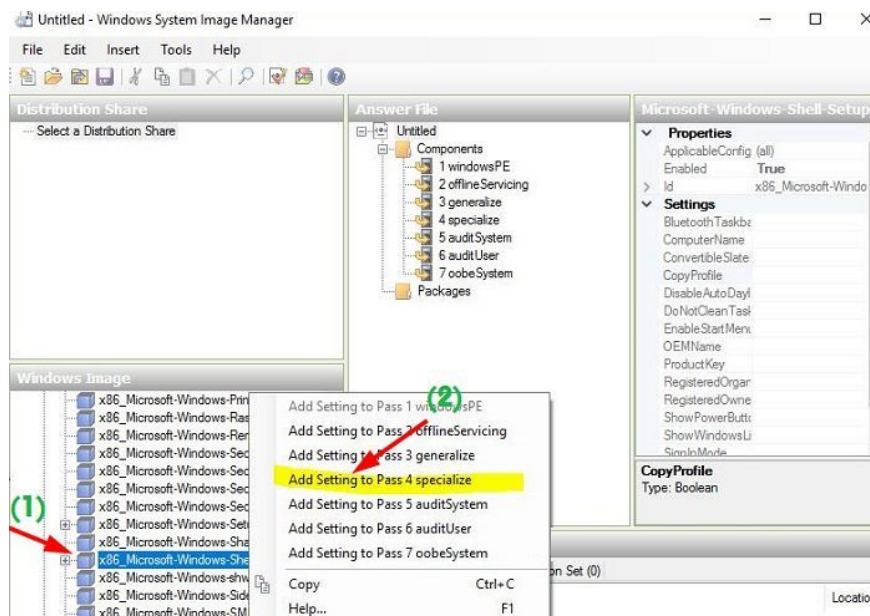
The next message appears, with something like that you want to create a Catalog file (with local Admin rights?) => Click Yes to agree.



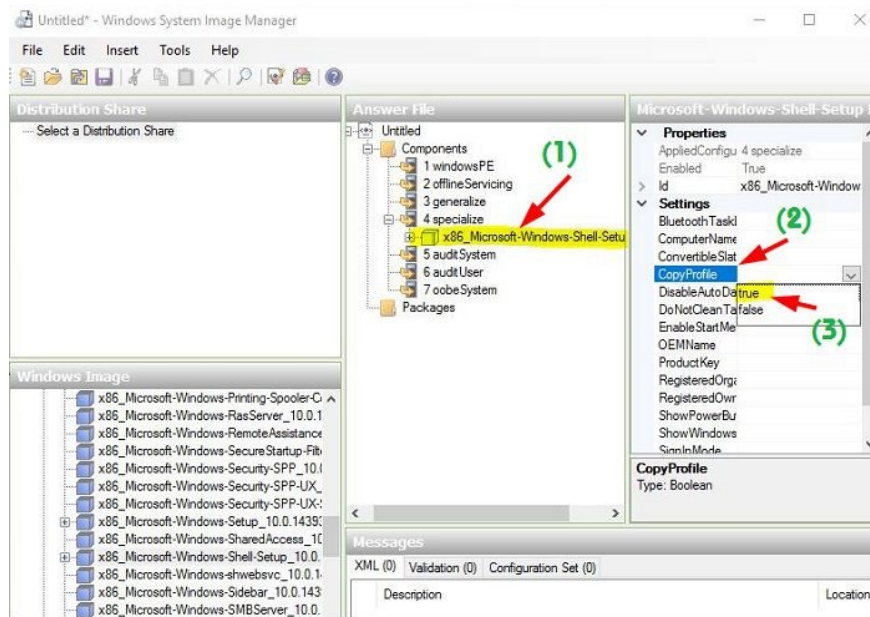
At Components => click the plus sign (+) to open the installation list. Please do as shown below.



At this step, go to the line x86_Microsoft-Windows-Shell-Setup_10.0 . => right click => and select the line Add Setting to Pass 4 specialize.

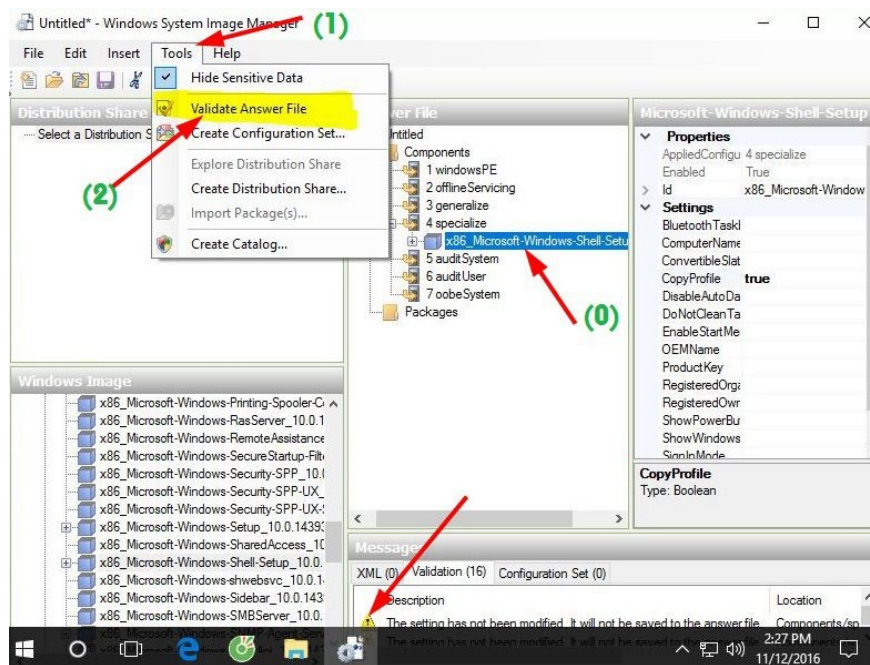


You notice in the right-hand column => select the item you just added (select the field Microsoft-Windows-Shell-Setup) => continue to look to the right, select CopyProfile => select True as shown below.



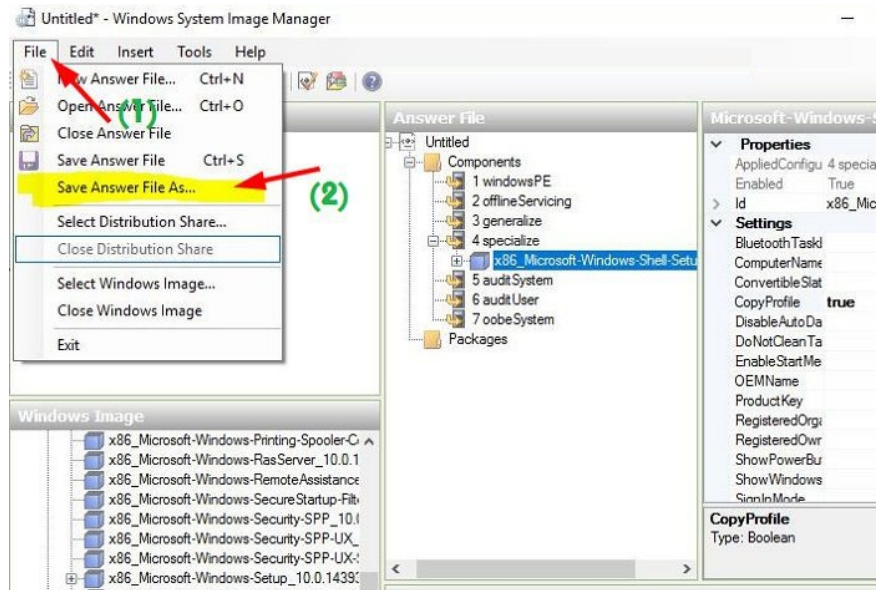
Okey, now click Tool => select Validate Answer File to check if there are any errors.

You will notice that if in the Messages section at the bottom of the program, all yellow exclamation warnings are OK.

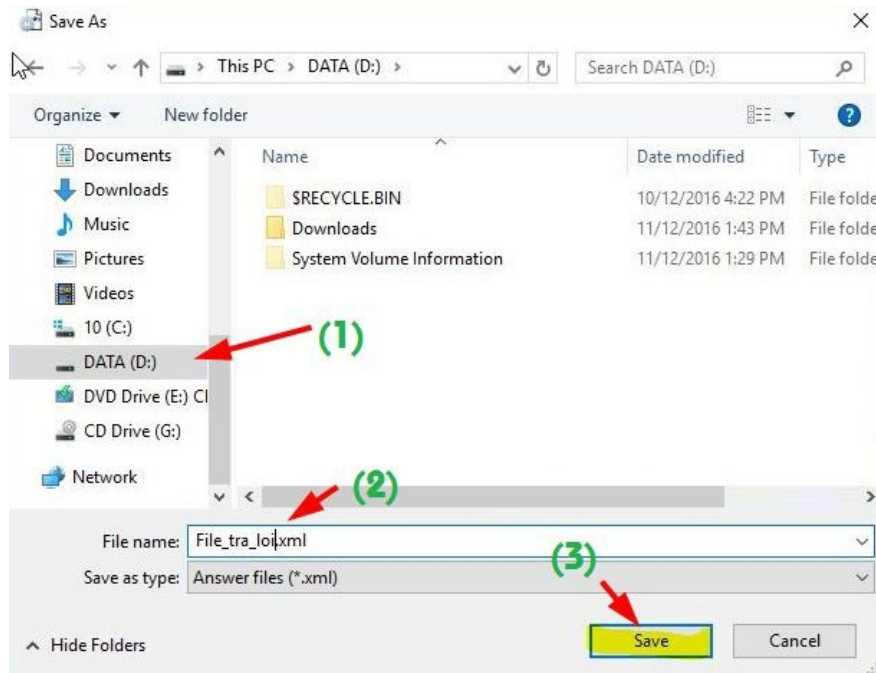


Finally, save the Answer file to a file with a different name:

Go to File => select Save Answer File As .



A window appears, select the partition to save the file => name the file File_tra_loi.xml => click Save to save it.



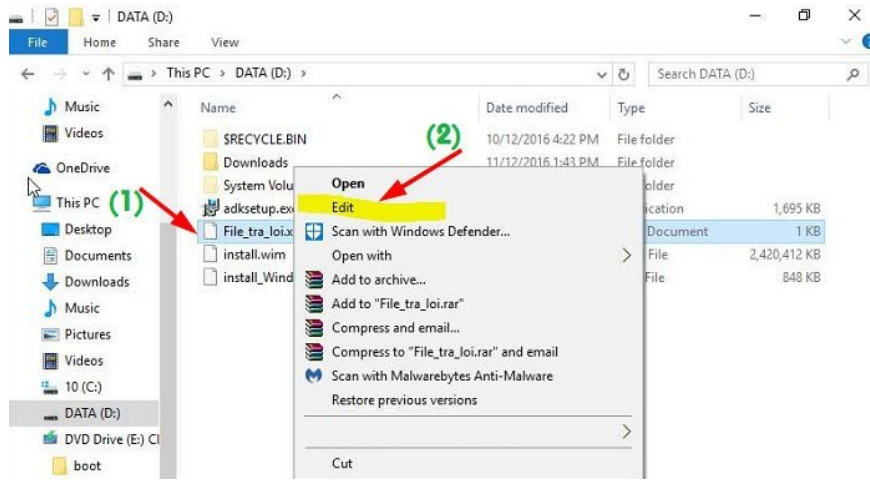
+ Step 7: Edit the file File_tra_loi.xml a bit.

Specifically, we need to reset the path to the install.wim file.

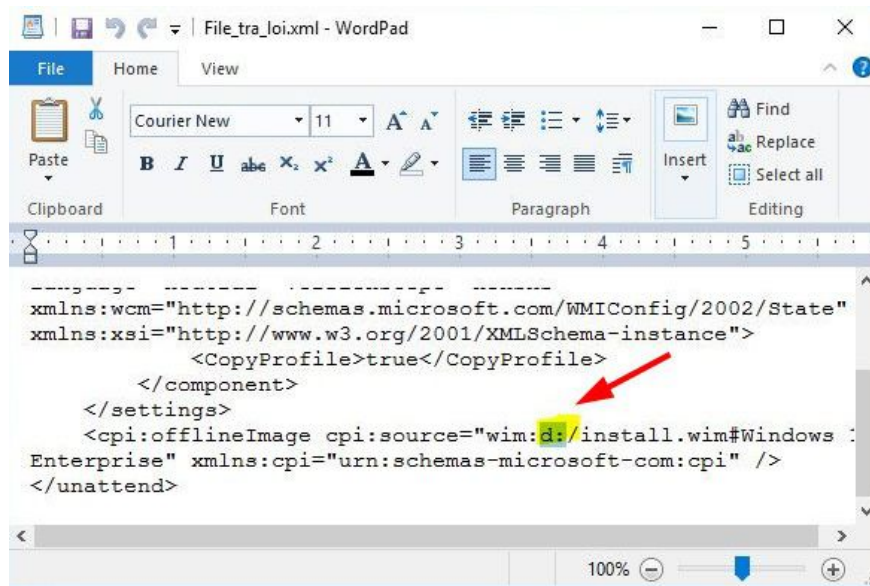
The purpose of this is so that when we run the sysprep tool, the program will get the install.wim file (and other full components) from the installation DVD / USB, and not from the D:

Proceed as follows:

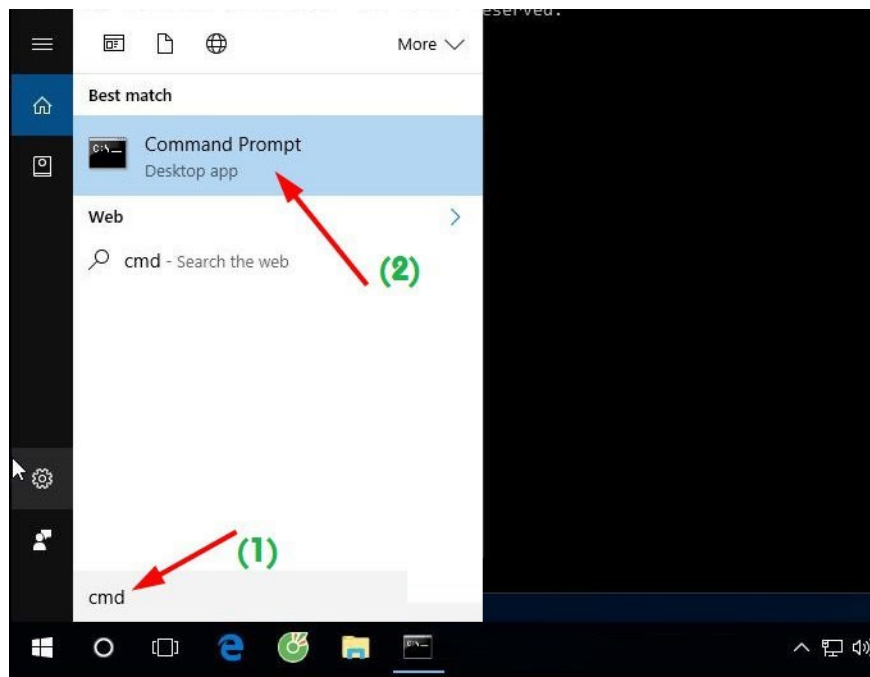
Right-click the file File_tra_loi.xml => select Edit as shown below.



File_tra_loi.xml file will be opened with WordPad as shown below. As you can see, the install.wim file is currently in drive D, with the path D: /install.wim.

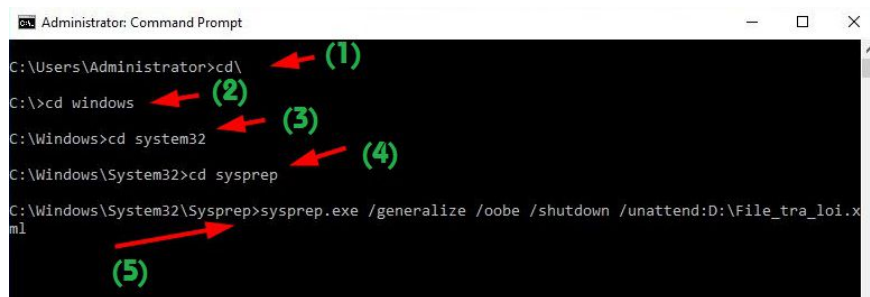


You check to see what is the symbol of the Windows drive. As my example is currently, the installation file is in drive E. So the path to the install.wim directory will be E: sourcesinstall.wim.

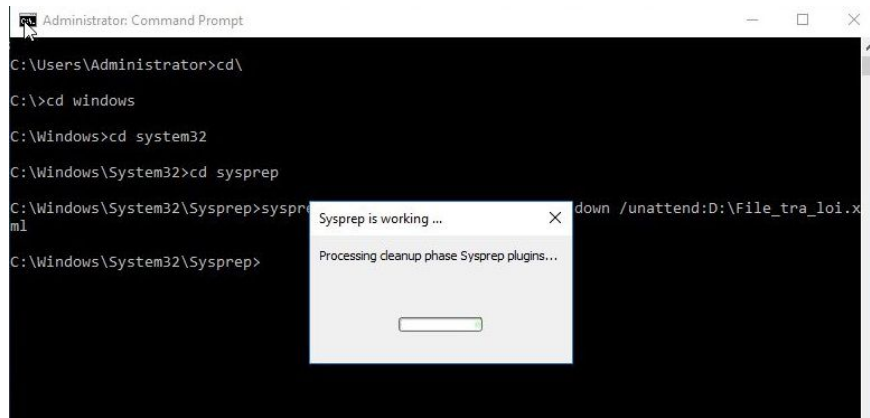


The cmd window appears, enter the following commands in turn. Note that after each command you have to press Enter to do it.

```
cd
cd windows
cd system32
cd sysprep
Sysprep.exe / generalize / oobe / shutdown /unattend:D:File_tra_loi.xml
```



Okey, a lot of steps, right! But here it is almost done. The Sysprep process has begun.



After running, it will automatically shutdown and your job now is to back up this Windows version using Norton Ghost (recommended), Onekey Ghost or Acronis True Image .

Note: This is a multi-configurable ghost file, so you can extract it on many different computers. After the installation is complete, please do a few more steps such as activate windows, install more drivers if missing.

III. Experience when creating multi-configurable ghost files

1. You should create a multi-configuration ghost file in a virtual computer such as VMware or VirtualBox so that in case of an error, I will snapshot to do it again faster.
2. During the process of ghosting, you should not activate the license first (using Cr @ ck) Windows, office, or other software, because when you use the Sysprep tool it will delete the key due to the program Cr @ ck cause. Therefore, the best way is to do these things after you finish extracting ghosts.
3. During the installation of the software, the system will require restarting the computer, let it restart, because after the boot is complete, it will also enter Audit Mode. .
4. Before proceeding, you should defragment to avoid the Dump Green Memory Manager error during Sysprep. If you are using an SSD, you do not need this step. If you use a virtual computer to create ghost files, at least you must set up at least 2 GB for the virtual computer, so that when Sysprep does not have a missing error RAM memory.

IV. Video tutorial on how to create multi-configuration Windows 10 ghost

You can watch or download videos [here](#) .

Epilogue

Hopefully, how to create a Windows 10 multi-configuration ghost file with the Sysprep tool will be useful for you, satisfying your passion.

Do not forget to share useful Ghost versions by you for the community.

Good luck !

You finished reading the article "**How to create multi-configuration Windows 10 ghost version Microsoft standard**" edited by the [TipsMake](#) team. We hope this article has provided you with many useful tech tips and tricks. You can search for similar articles on tips and guides. Thank you for reading and for following us regularly.

© 2019 TipsMake.com