

# How to create multi-configuration ghost files on Windows 7/8/10 with Easy Sysprep

EasySysprep is software to create multi-configuration ghost files on operating systems from Win XP to Win 10 32bit and 64bit.

**Multi-configuration Ghost** is the process of creating a Windows-installed computer with a full operating system including the necessary and most optimal software for a computer, then creating a multi-configuration ghost file from the newly created operating system to extract. ghost for many computers. This will save time compared to having to reinstall Windows along with many other software.

Currently, there are many software that support creating multi-configuration ghost files, such as SPAT (System Preparation Assisted Tool) software that we introduced to readers in the previous article. However, SPAT will only ghost Windows 32bit. If so, you can use EasySysprep software to multi-configuration ghost from Win XP to Win 10 on both 32bit and 64bit versions.

**Note to readers** that Easy Sysprep's interface is in Chinese and requires many steps, so please follow each step in detail.

## 1. Prepare software before ghosting:

Before creating multi-configuration ghost files, Windows computers need to ensure the following requirements include:

1. Windows is installed from CD/DVD/usb or from ISO file.
2. Fully activate the license, optimize the system, turn off unnecessary services and only leave necessary software for the system, avoid installing too much.
3. Clean up computer system trash with software like or , .

Next we will need to download some necessary tools to create multi-configuration ghost files.

1. Download Easy DriverPack (Wandriver) driver update software.
2. Download EasySysprep software to create gile ghost. Latest version Chinese language interface. Supports 32bit and 64bit operating systems.
3. WinPE to create ghosts in the WinPE environment. You can download Win 7 PE ISO using the link <http://4share.vn/f/427674717a7a7075>.
4. Software to create bootable USB-HDD in link <http://4share.vn/f/360200050e0f0504>.

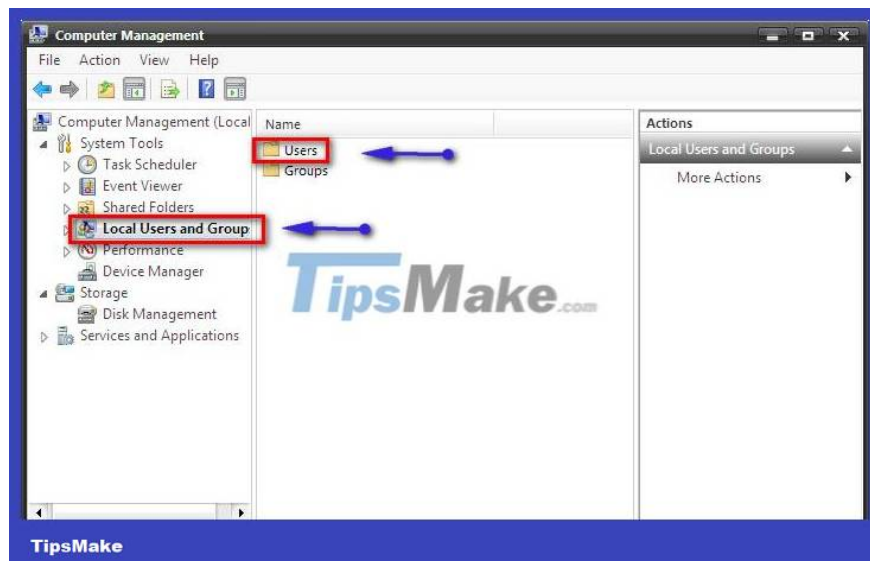
You download the file, then extract it, click on the USBZL file to run. Then do as shown below.



## 2. How to create multi-configuration ghost files:

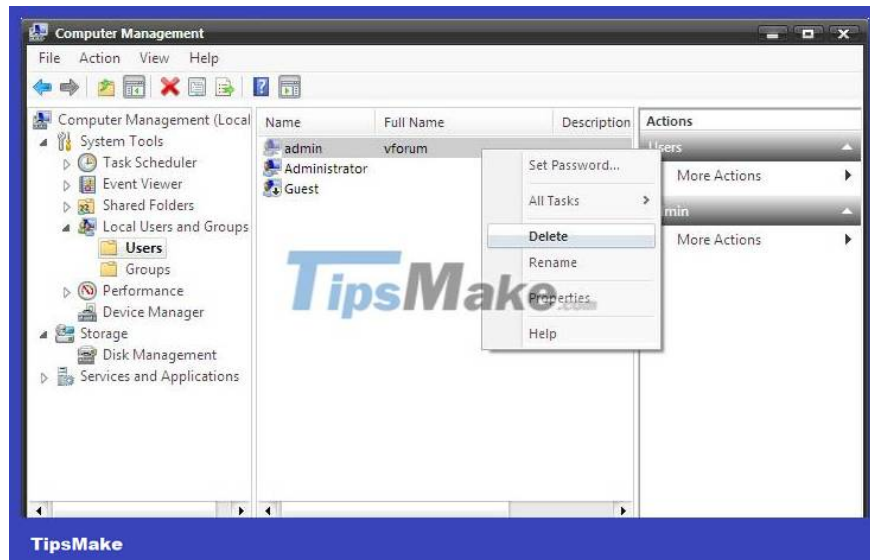
### Step 1:

First, delete the User account logged in on the computer to avoid errors when extracting the ghost. Right click on **Computer** and select **Manage** . Next click on **Local Users and Groups** and select **Users** .



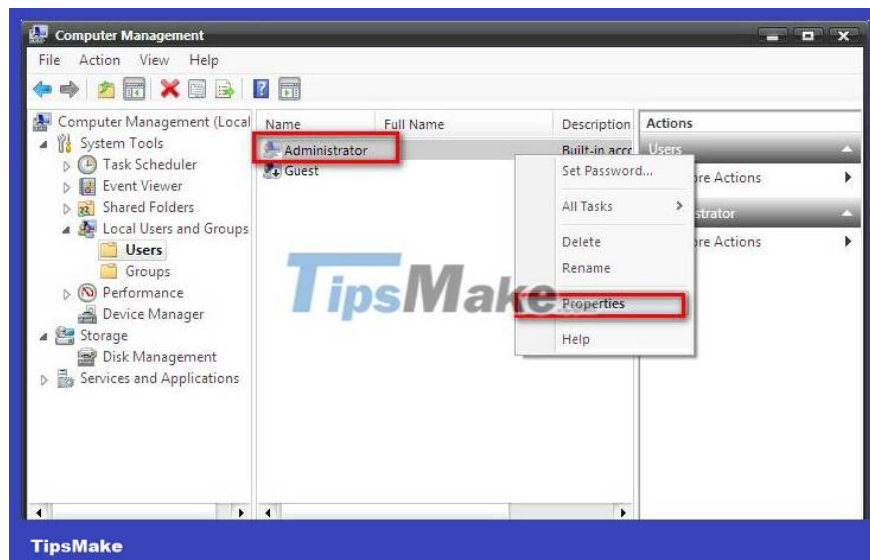
### Step 2:

Delete the accounts on the computer, leaving only the Administrator and Guest accounts.



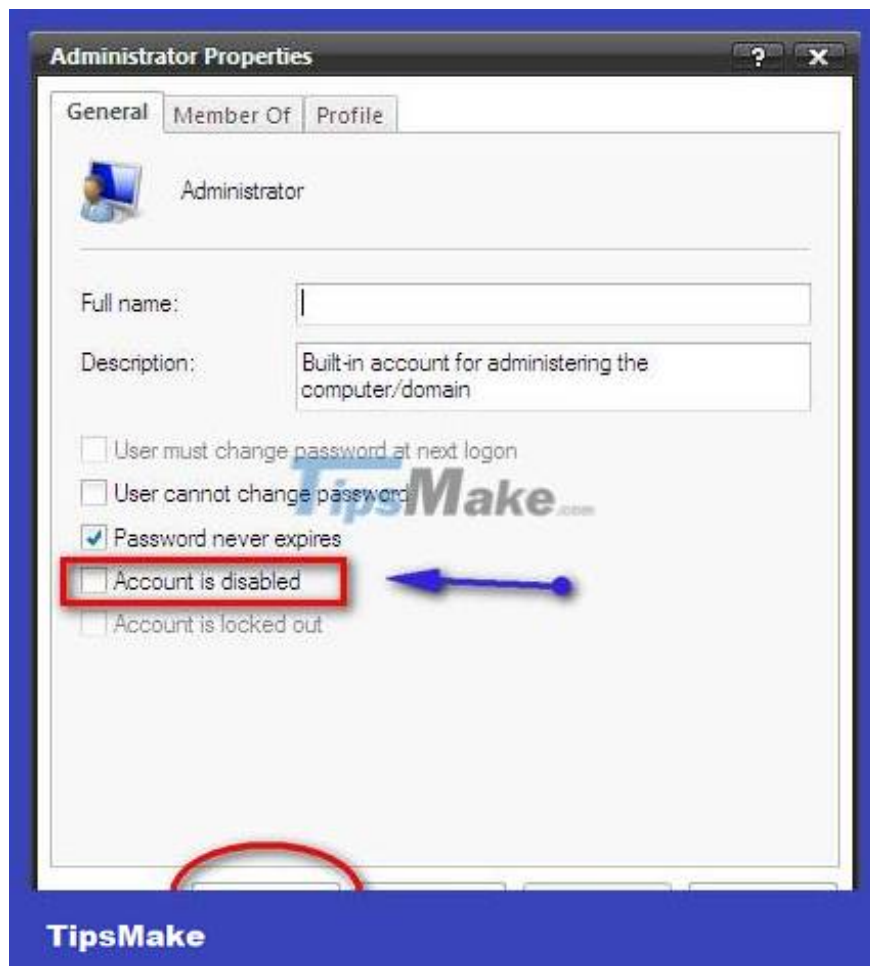
**Step 3:**

**Right-click on the Administrator account to activate this account and select **Properties** .**



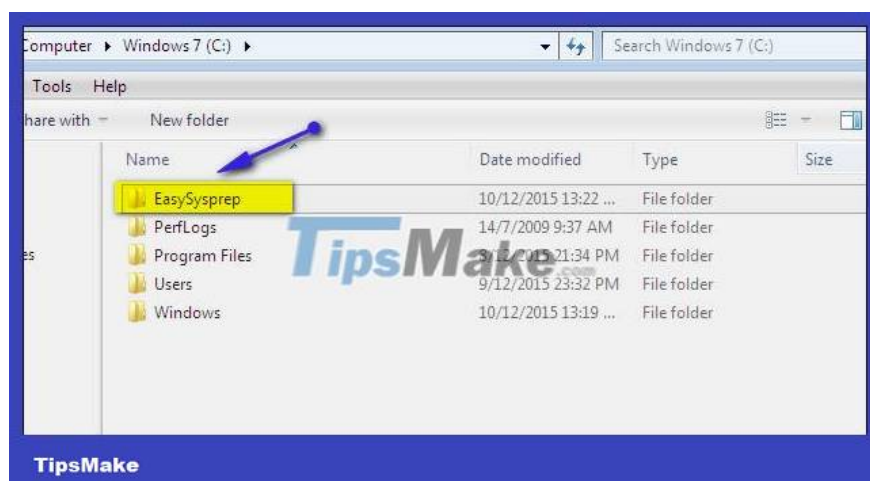
**Step 4:**

Uncheck **Account is disabled** and then click **Apply > OK** . Then restart the computer, then boot and access Administrator.



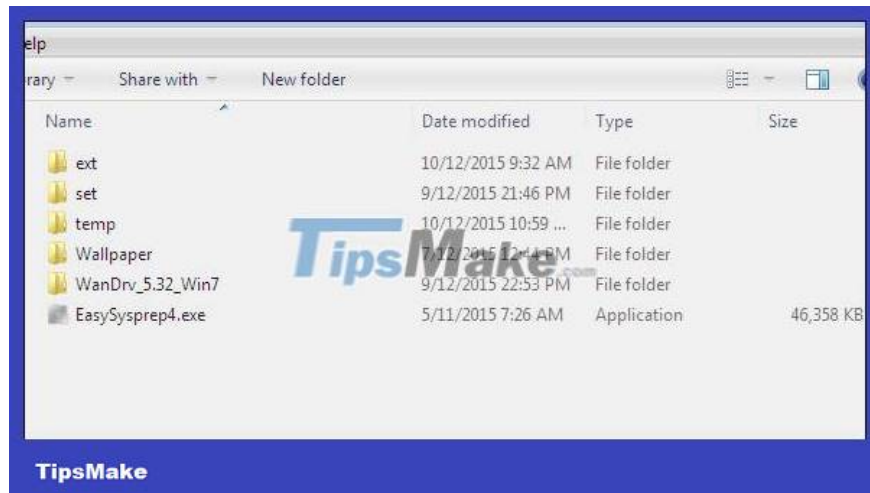
### Step 5:

Extract the two software Wandrv and EasySysprep\_4.3.28.599. Copy the EasySysprep\_4.3.28.599 folder to the **C drive partition** of the operating system and rename it to EasySysprep.



### Step 6:

Copy the Wandrv driver update software folder to the EasySysprep folder.



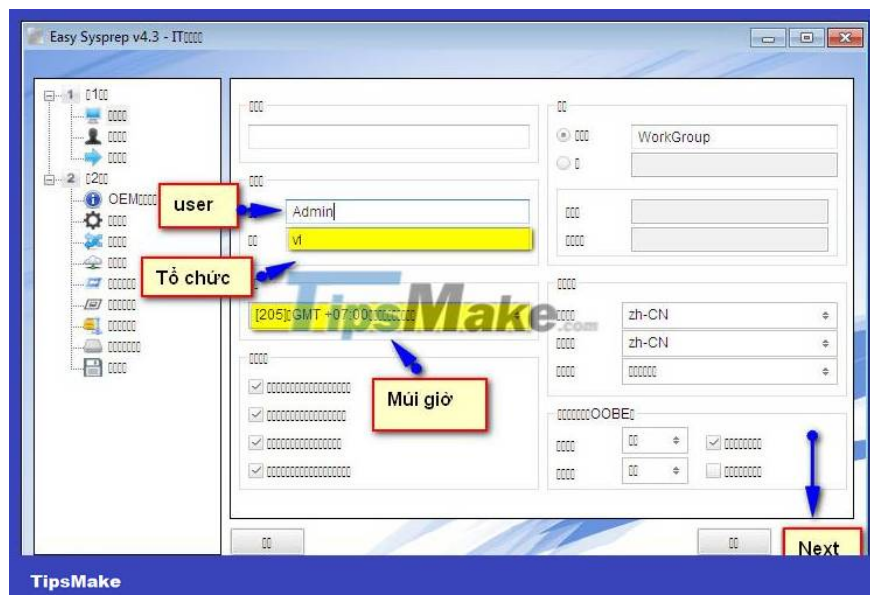
### Step 7:

In drive partition C, click **EasySysprep4.exe** to run the software and then press **the Start button** as shown.



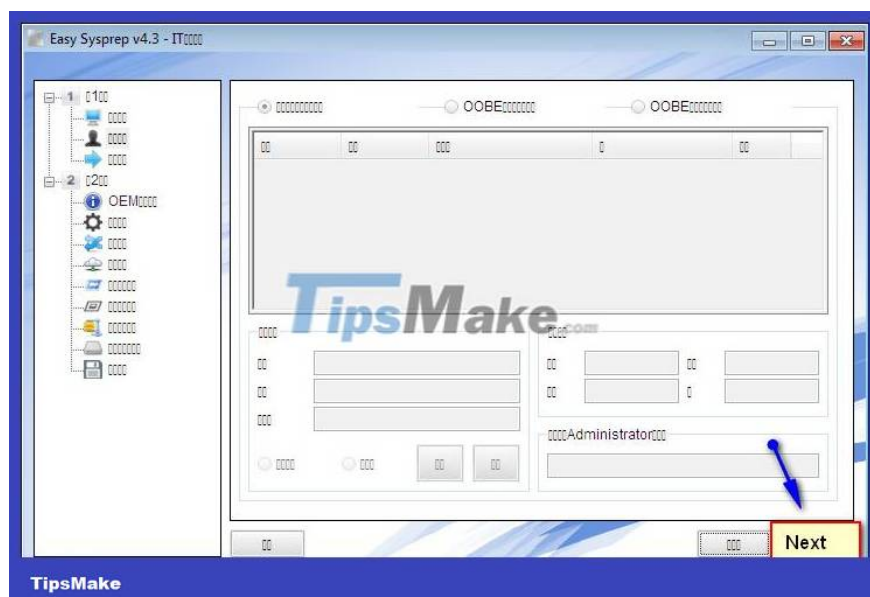
### Step 8:

Fill in user information, set time zone and **click Next** . Follow the items in the picture exactly.



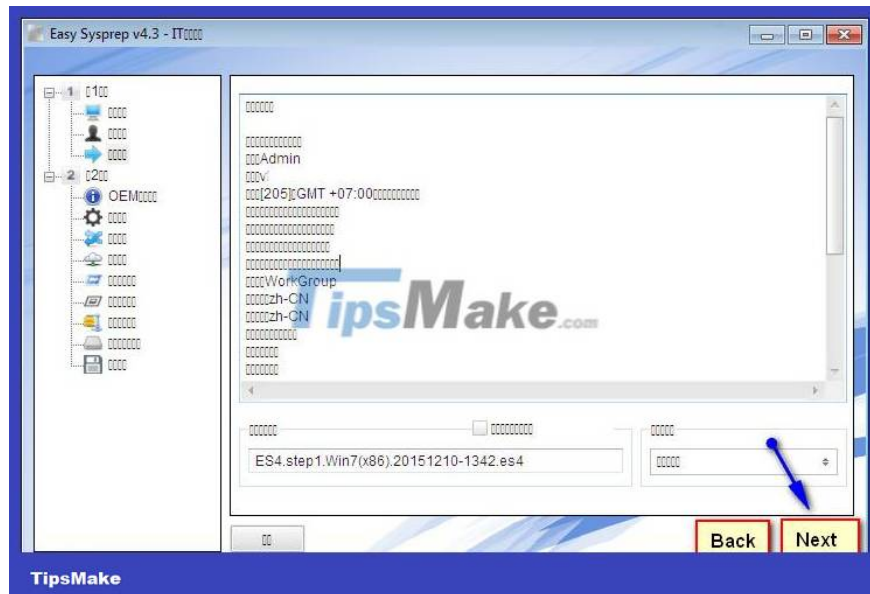
**Step 9:**

Click **Next** to continue. Then you plug in the USB boot to boot into WinPE.



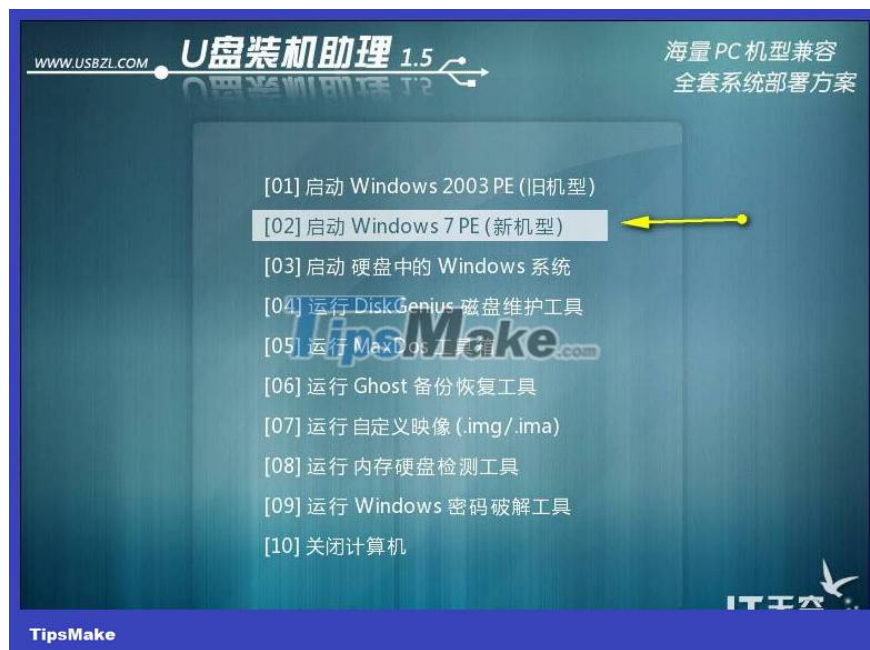
**Step 10:**

Click **Next** to continue.



### Step 11:

Boot into Win 7 PE as shown below.



### Step 12:

Access the C drive partition to **run the Easy Sysprep.exe file** on the WinPE environment. Click the **Start button** again .



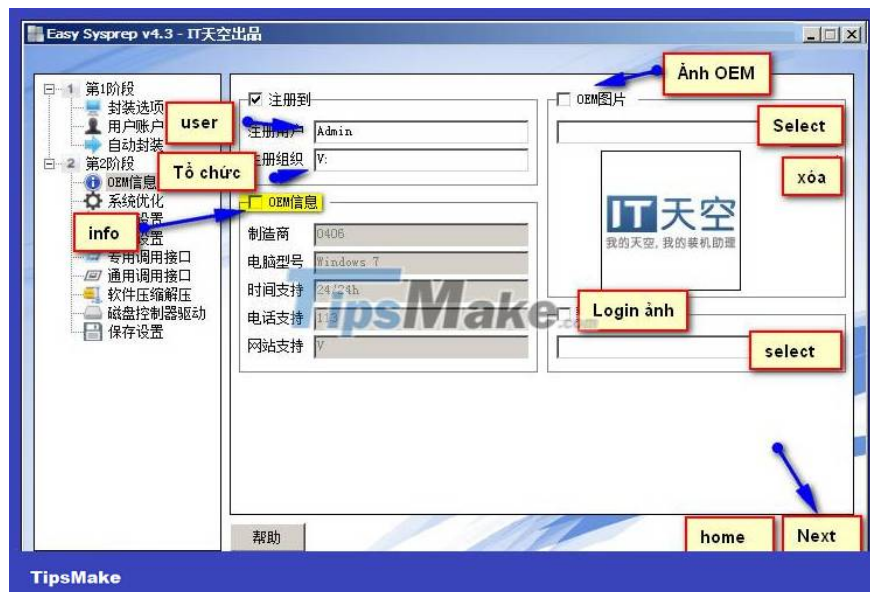
### Step 13:

Follow the detailed steps in the image. **In the Info** section, you can check the box to fill in personalized information, or uncheck it if you do not want to personalize information on the computer, depending on the user.

Uncheck the **OEM image** section and select delete **PEM bipmap image** , **uncheck the Login image** box .

In case the user wants to add an OEM image, click Select and find the bipmap image file.

Click **Next** to continue.



### Step 14:

**In the Install Program** frame , scroll down and uncheck item 52, then click **Next** to continue.



### Step 15:

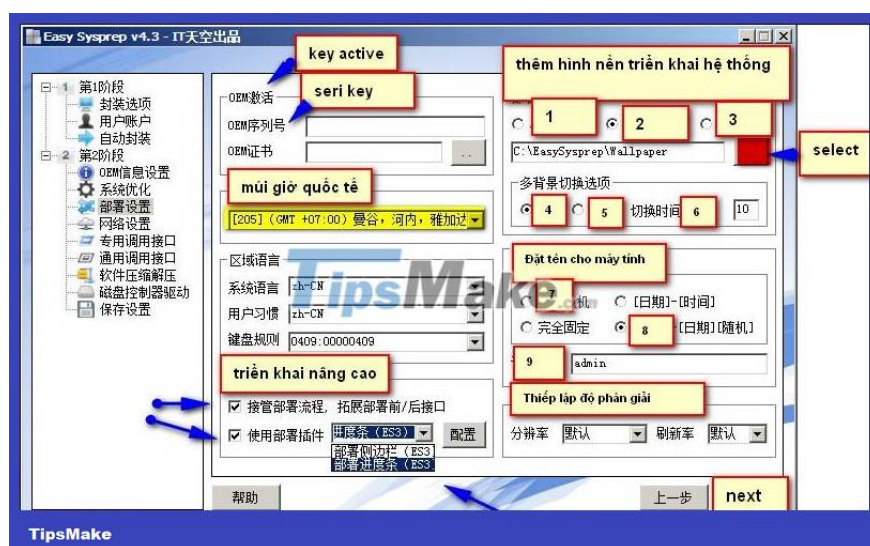
Next, if your computer is from Win 7 or higher, you do not need to enter a key, but in Vietnam time zone, select 205.

Next, the system deployment wallpaper section will have options including:

1. Frame 2 opens multiple images one after another in order. Select number 2 and then click the square icon to open the wallpaper folder in drive partition C.
2. Check box number 4 to open a random image.

Set screen resolution to default auto. The advanced implementation selects the last line in the list. Finally click **Next**.

Follow the detailed items in the photo to proceed.



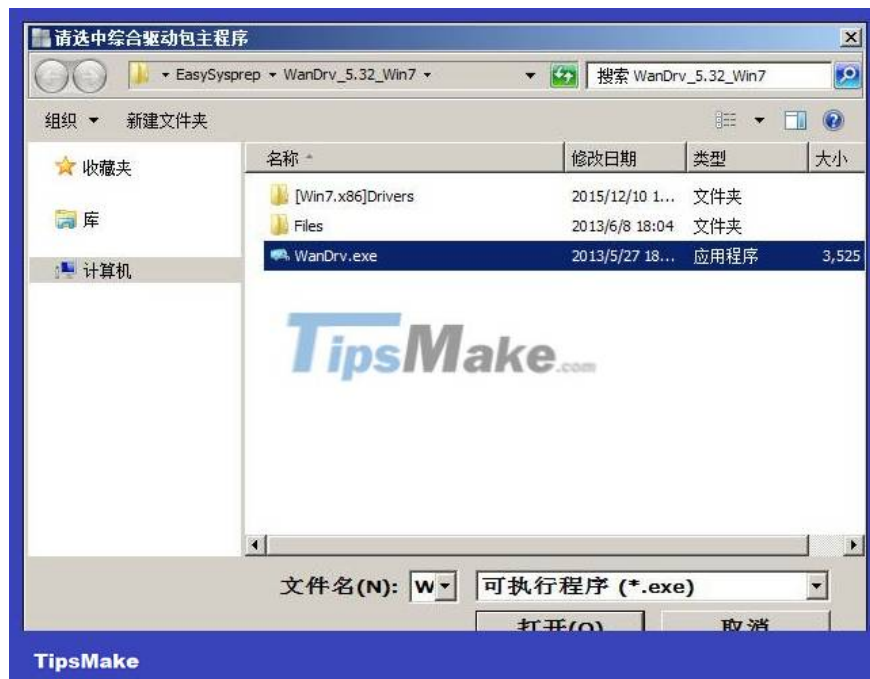
### Step 16:

Continue clicking **Next** .



### Step 17:

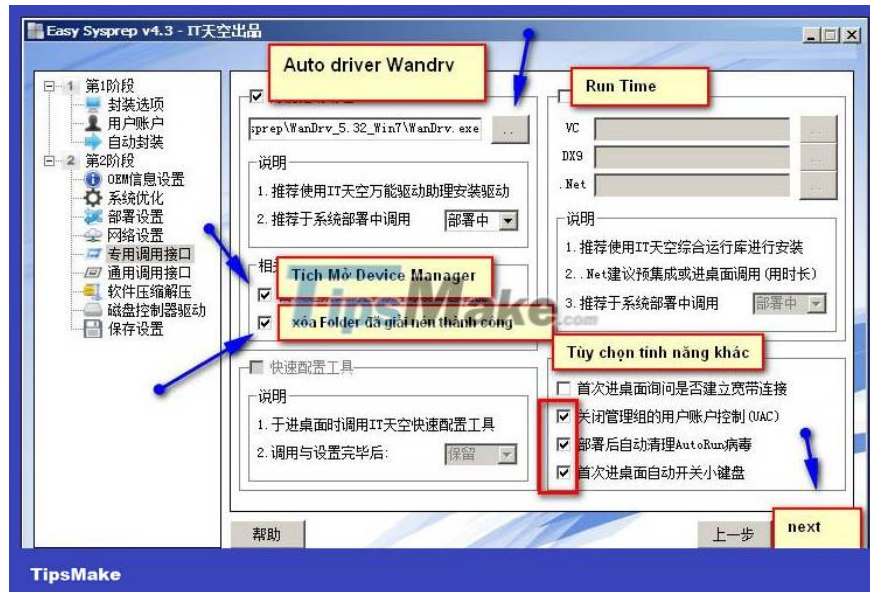
Next, in **the first frame of Auto driver Wandrv**, click on the square icon to add **the Wandrv.exe installation file** in drive C.



Check the box to open **Device Manager** and delete the successfully extracted folder.

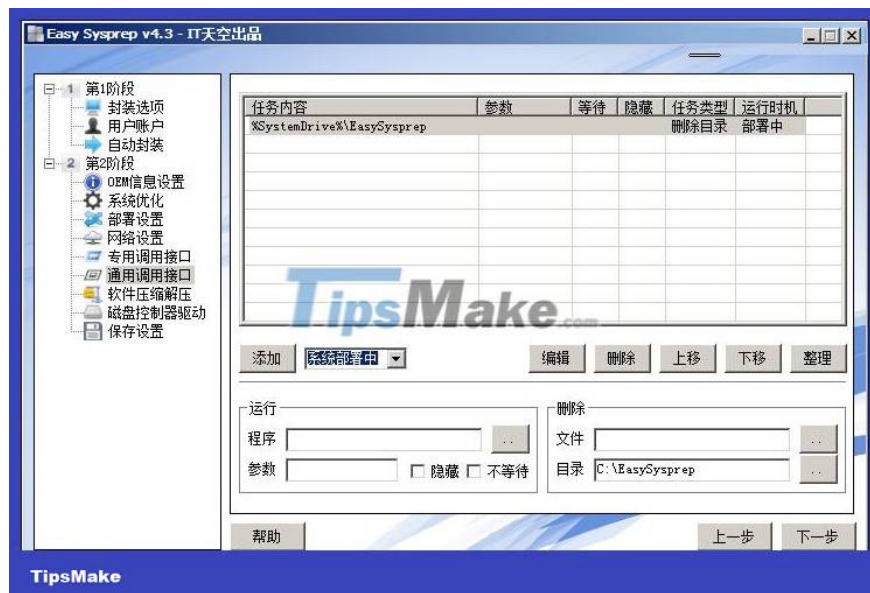
**In the Run Time** section, users can add .NET and DX9.0 or ignore it.

In the other feature options box, check the 3 boxes as shown in the picture. Finally click **Next**.

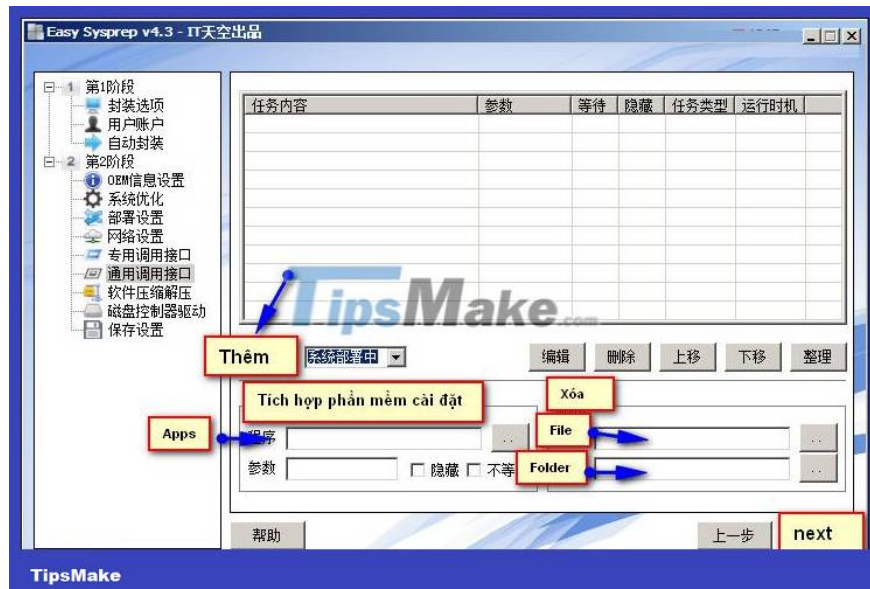


### Step 18:

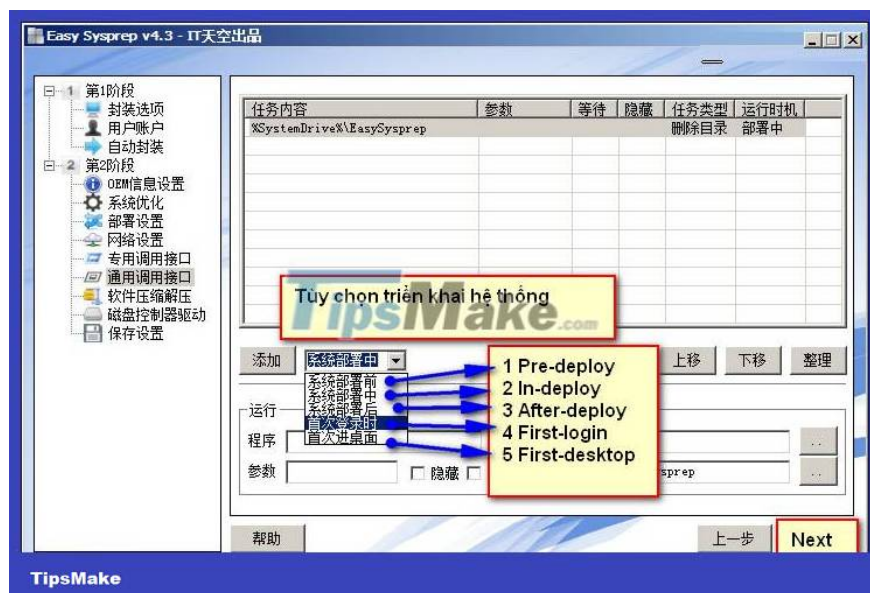
In the **Folder** frame, click on the box to add the **EasySysprep** folder in drive C, which will be deleted automatically after extracting the ghost file.



Click **Add** to add it to the list of deletion options. **The Apps** section adds installation software, which can be skipped.



In the system deployment options section, choose when to run Driver Wandrv, select line number 4 **First-login** and press **Next** .



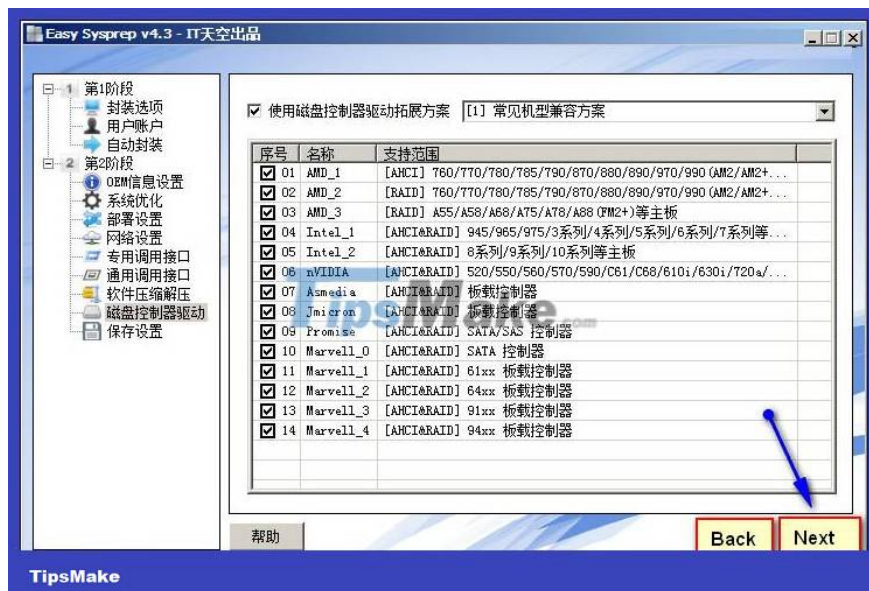
### Step 19:

In this interface you will see a list of pre-installed software, click **Next** .



**Step 20:**

Click **Next** to continue.

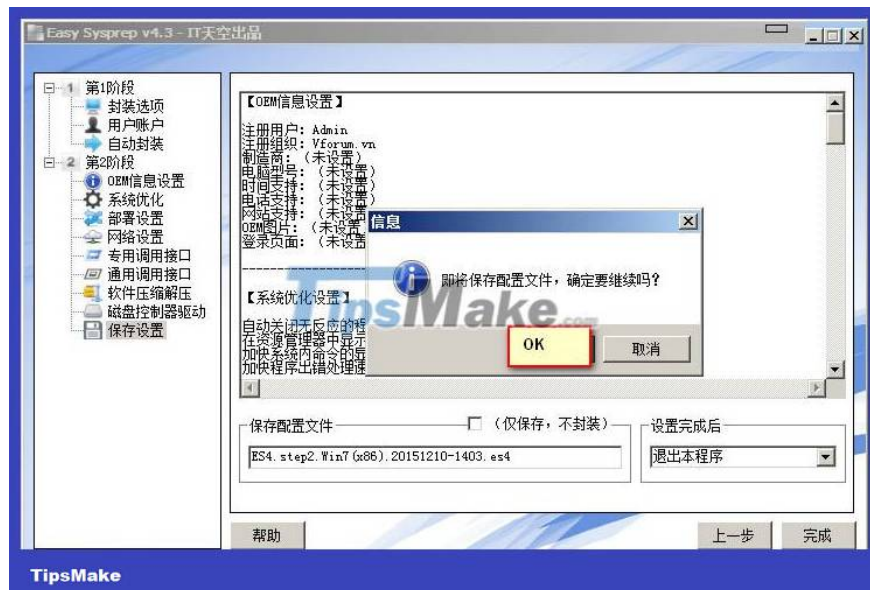


**Step 21:**

Finally click **Finish** to proceed with setup.

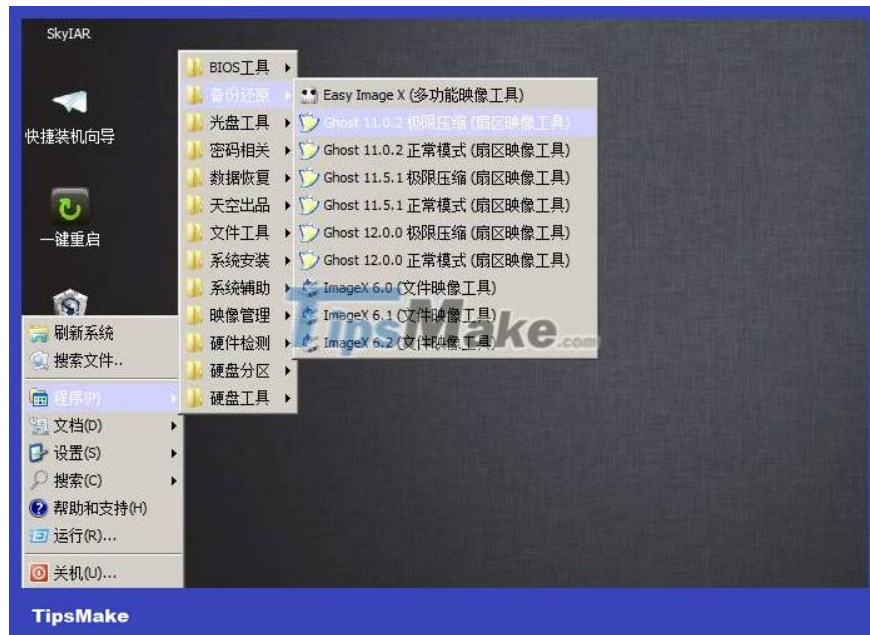


Select **OK** to agree to proceed.

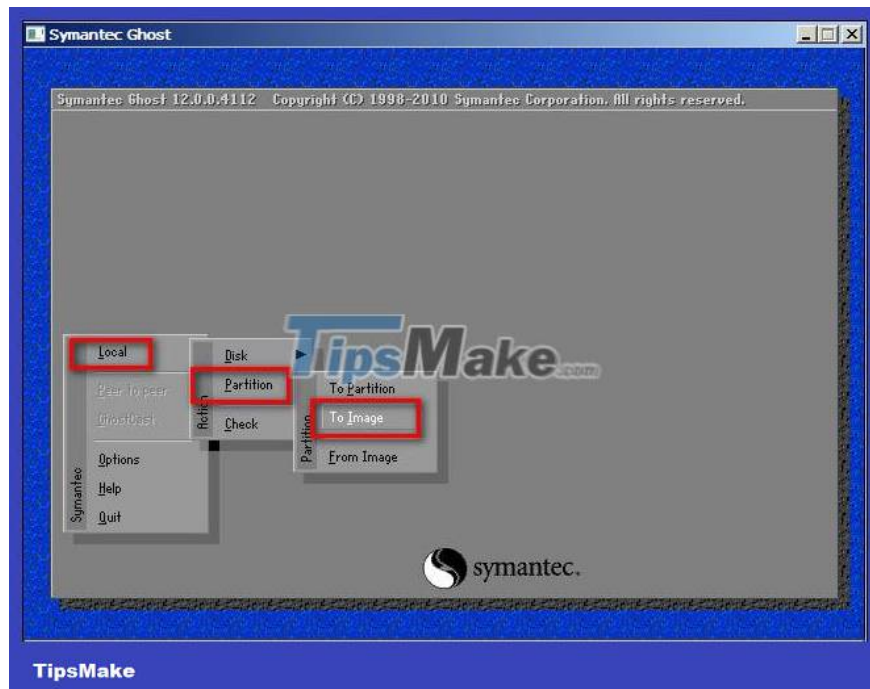


**Step 22:**

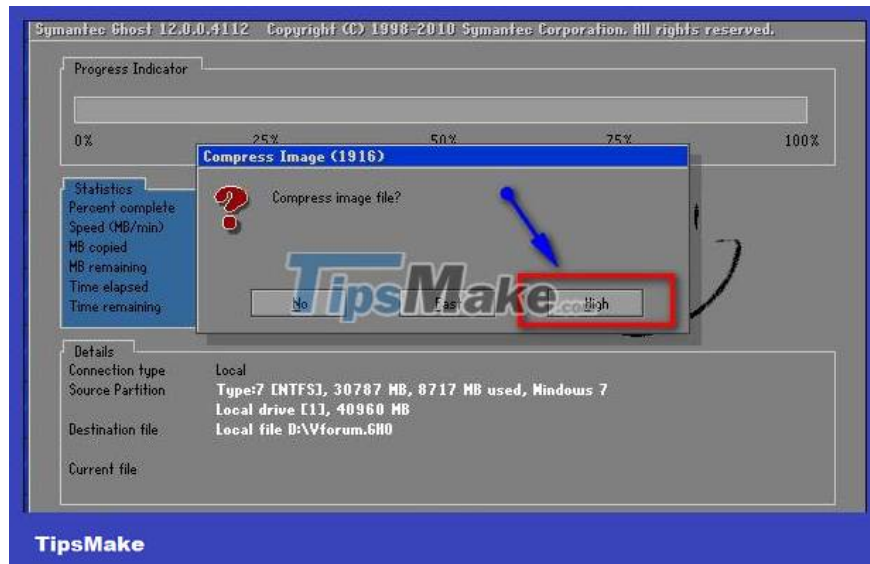
Next, proceed with multi-configuration ghost on WinPE.



Select **To Image** .



Select the highest compression level **High** in the table. Finally, wait for the process of extracting the ghost file to complete.



Wishing you success!

You finished reading the article "**How to create multi-configuration ghost files on Windows 7/8/10 with Easy Sysprep**" edited by the [TipsMake](#) team. We hope this article has provided you with many useful tech tips and tricks. You can search for similar articles on tips and guides. Thank you for reading and for following us regularly.