

How to create links in PowerPoint

Creating a Hyperlink link on PowerPoint has many other types such as links between slides, links to websites, ...

Hyperlink links on Word or Hyperlink on Excel can insert web links or insert other files for faster access. With PowerPoint, we also create hyperlink links with many different types.

Users create forms of links in a slide, create links to email addresses, website addresses, or links to other slides, etc. With this Hyperlinks link, your PowerPoint presentation will be flexible and effective. more effectively, there is no need to manually open when you want to access something. The following article will show you how to create Hyperlink in PowerPoint.

1. Instructions on how to create Hyperlink in Excel
2. How to create a crossword game on PowerPoint
3. MS PowerPoint 2007 - Lesson 10: Slide presentation effects

Instructions for inserting PowerPoint Hyperlink

1. 1. How to create links in a PowerPoint slide
 1. 1. Create a link on PowerPoint 2007
 2. 2. Create PowerPoint 2010 links or more
2. 2. How to create Hyperlink links on PowerPoint
 1. 1. Create links to slides
 2. 2. Create a web access link button
 3. 3. Create a file opening link on PowerPoint

1. How to create links in a PowerPoint slide

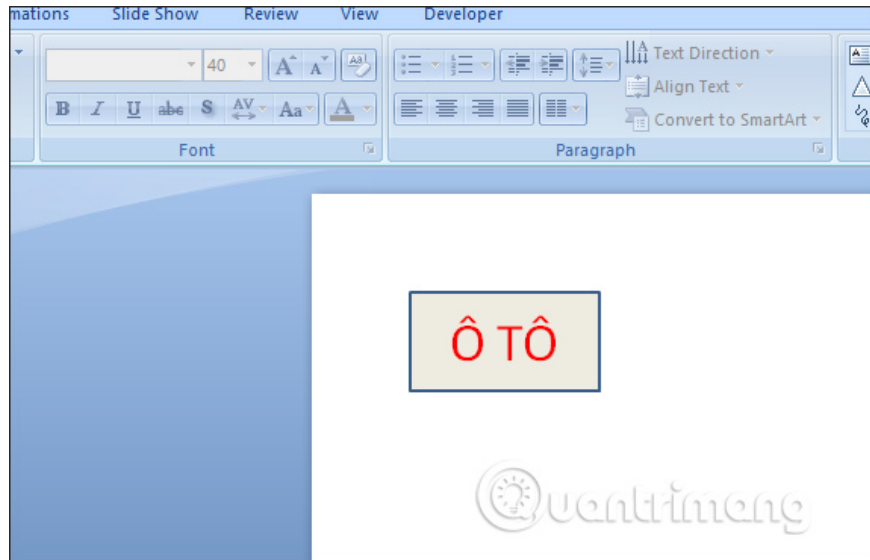
1. Create a link on PowerPoint 2007

For example, in a slide, they have a cube and an image. If you want to click on the cube, the image will appear.

Step 1:

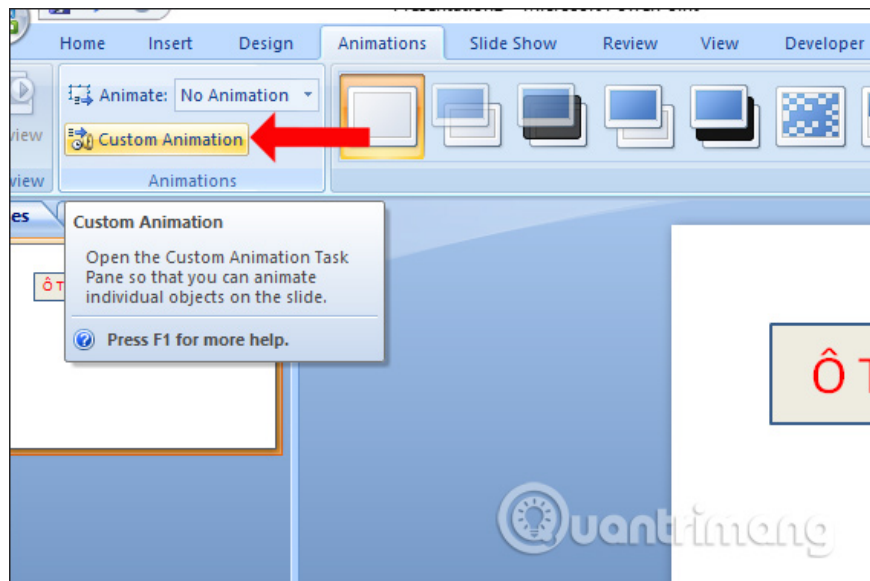
First **create a shape frame** and enter the content for the shape frame corresponding to the image you want to display. You can customize the shape frame according to the requirements of your slide.

Next insert the image into the slide.

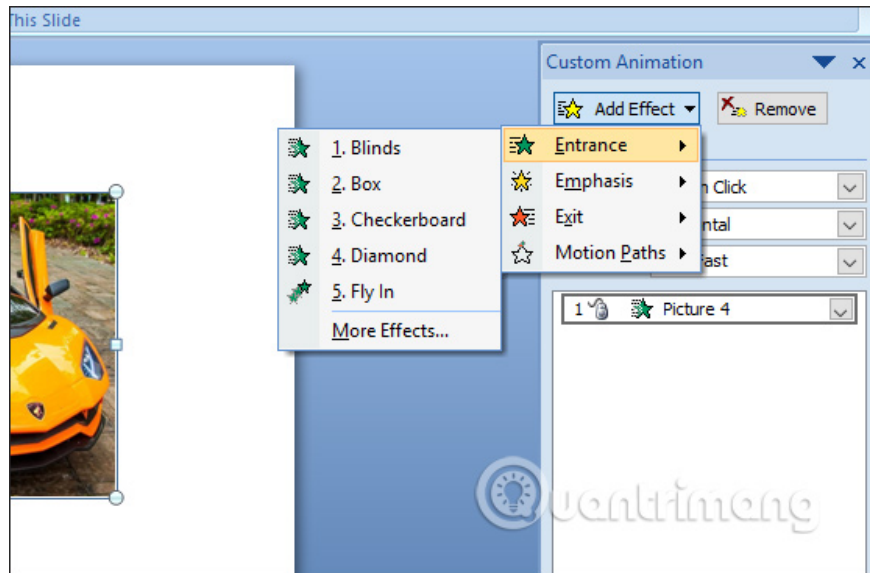


Step 2:

Click on the image and select the **Animation tab** , click **Custom Animation** .

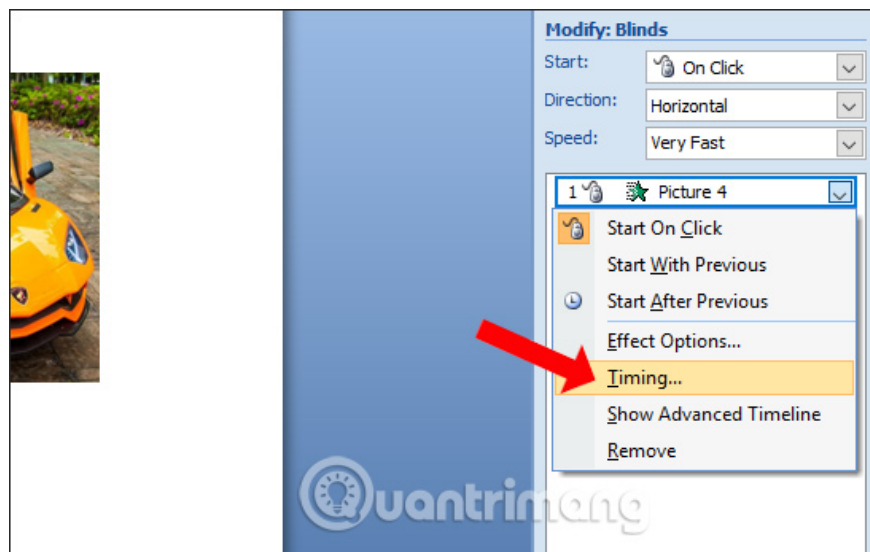


Display animation effect frame on the right side of the interface. Click on **Add effect** and select the effect of the image you want. Images will be applied dynamic effects immediately afterwards. If you don't like it, click the Remove button to select another animation effect.



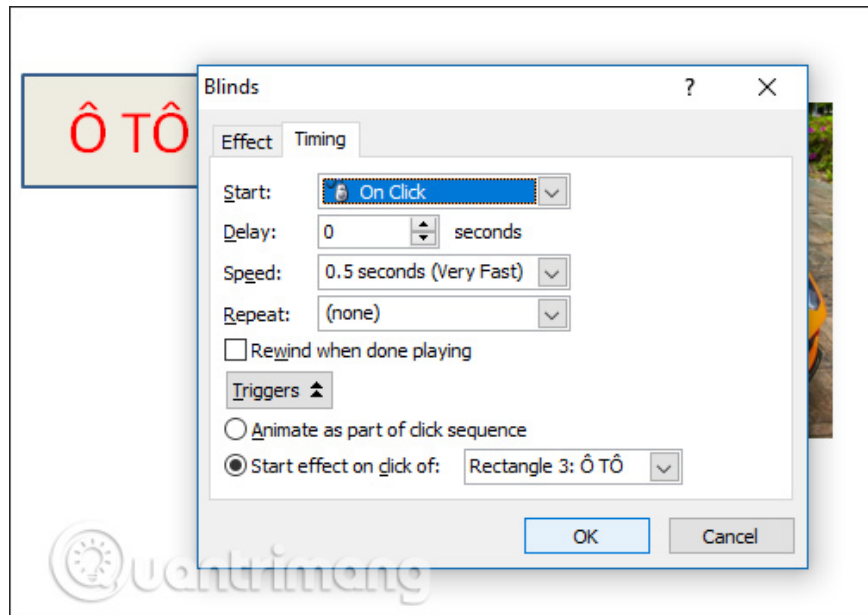
Step 3:

Display the name in the effect, click the drop down triangle and **select Timing** to set the time.



In the new interface click on the Timing tab. In the **Triggers** section click on the **Start effect on click of button** and then select the **name of the shape you** want to create a link to the image.

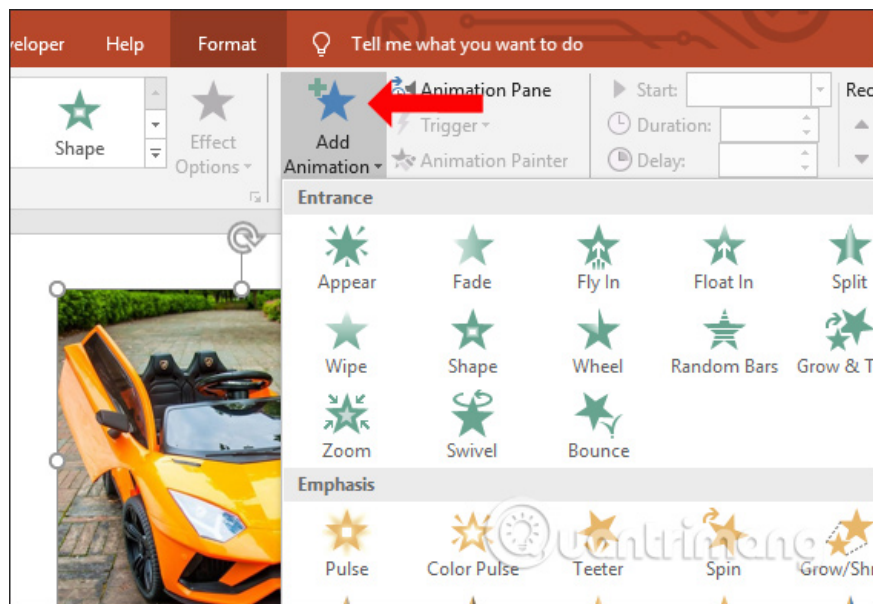
So when clicking on the cube, the image will show up immediately afterwards.



2. Create PowerPoint 2010 links or more

Step 1:

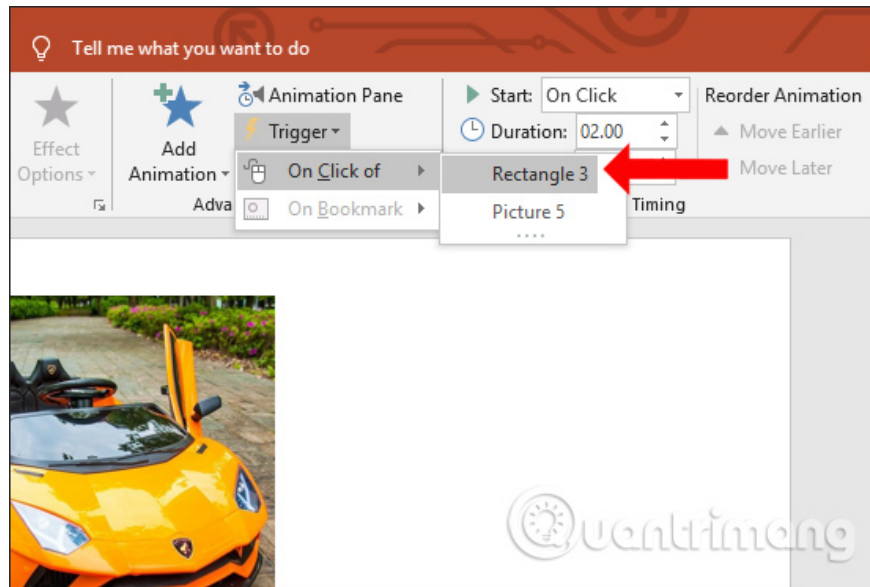
Users also create shapes and images on the slide. Click on the **Animations** tab and then click **Add Animation** to select the effect for the image.



Step 2:

After selecting the motion effect, in the **Advanced Animation** section, select **Trigger** and click **On Click of** and select the tile name.

The result is the same as above, click on the cube to display the image.



2. How to create Hyperlink links on PowerPoint

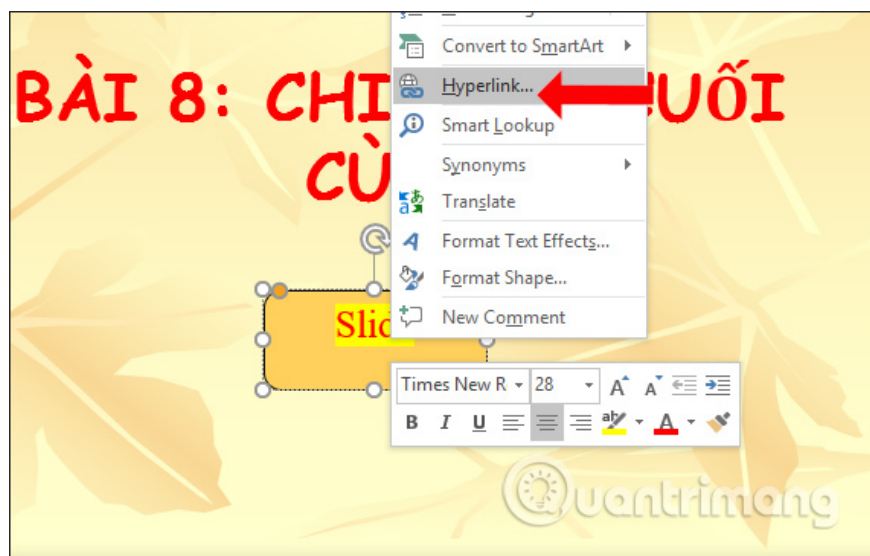
How to create this Hyperlink link will apply to all PowerPoint versions to link to slides, websites, emails .

1. Create links to slides

Step 1:

In the slide, you want to insert connections that users click on the **Insert tab** to draw a shape to create a link button. You also edit, change the format for the cube and enter the content.

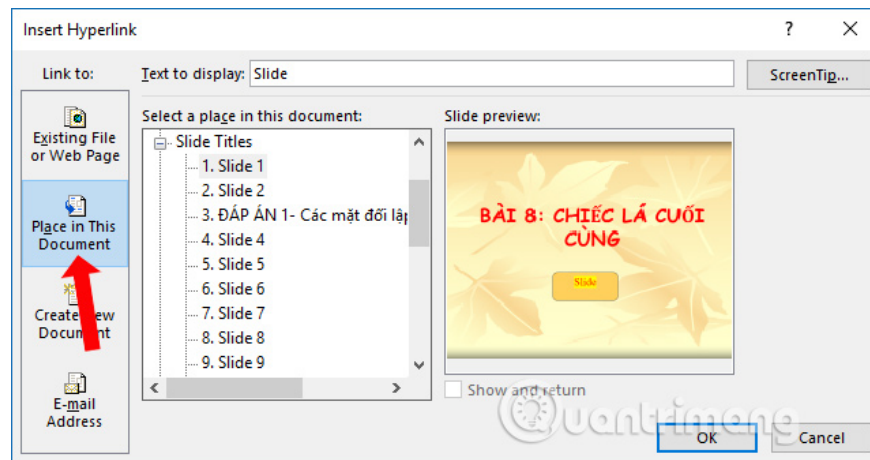
Next right click on the cube and **select Hyperlink** .



Step 2:

Display the new interface, click on **Place in this Document** to quickly link to **any slide** in the PowerPoint file.

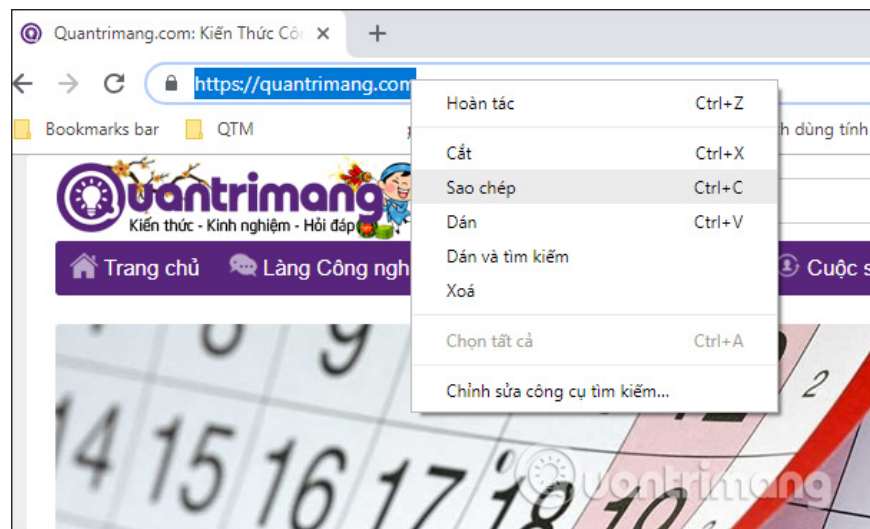
Clicking on each slide will display the content interface next to the Preview frame. Thus users will be easier to choose the right slide that they want to link to. Finally click OK to finish creating the link.



2. Create a web access link button

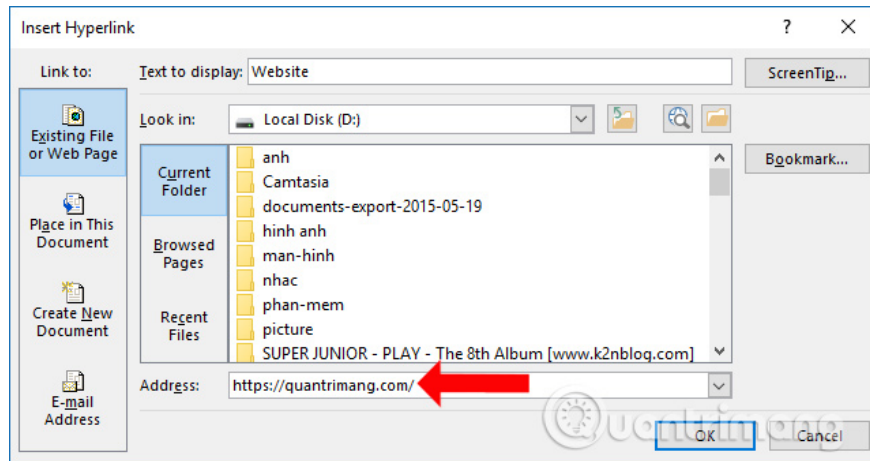
Step 1:

Go to the website you want to create a link button on a PowerPoint slide and then **copy the website link** .



Step 2:

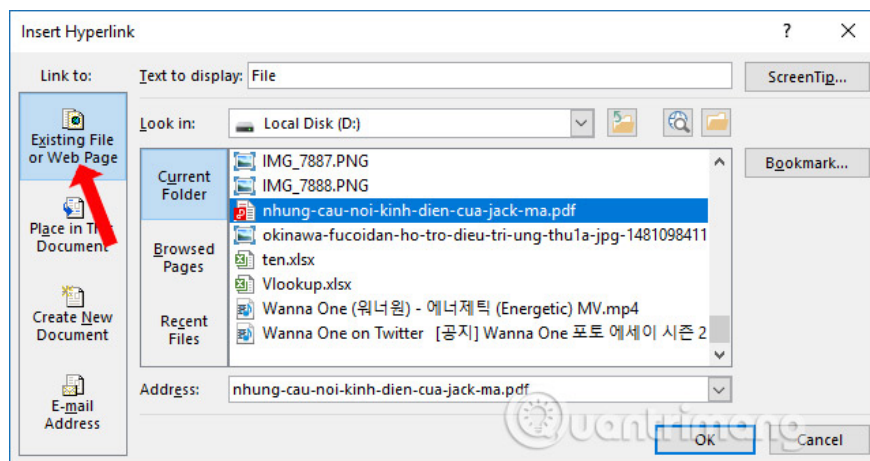
Also open the Hyperlink link for the link button. In the Insert Hyperlink dialog box, click **Existing File or Web Page** and paste the copied website URL into **the Address bar** . Click OK to save.



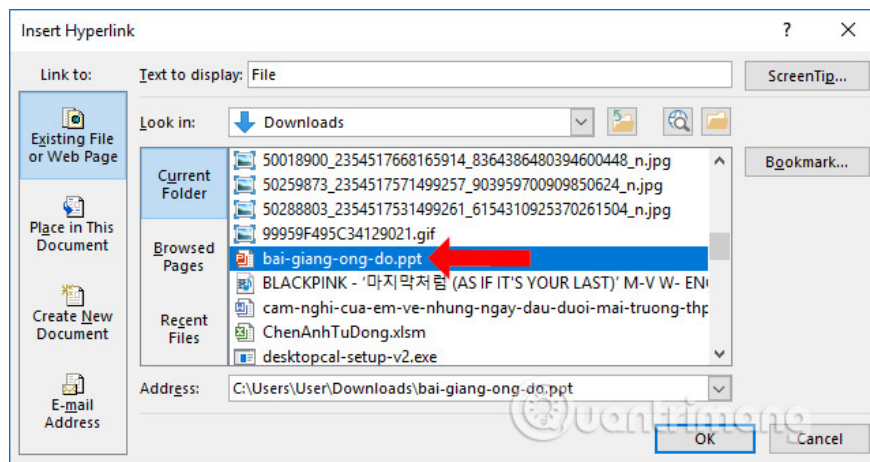
3. Create a file opening link on PowerPoint

At the button that links to the PowerPoint slide, right-click and select Hyperlink. Next in the new interface click on **Existing File or Web Page**. Next go to the **file or folder** we want to link quickly. Click OK to save.

Users can choose any file or folder format to link.

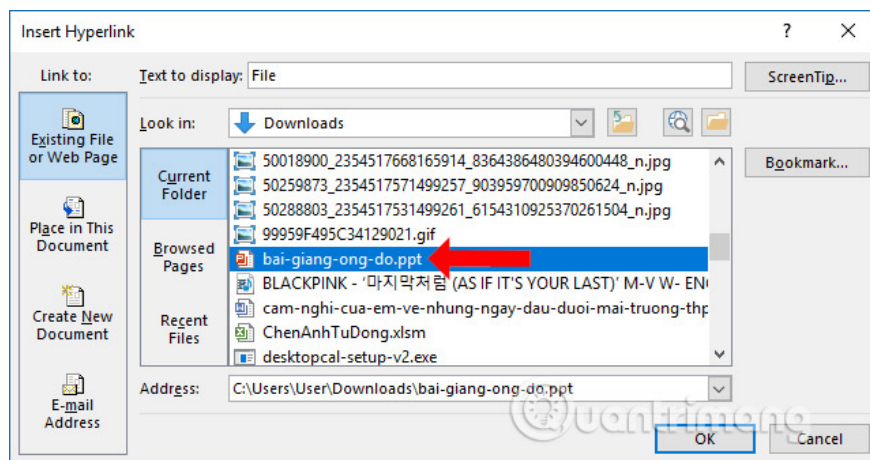


To create a link to another PowerPoint file, do the same thing as above. Also need to click on the PowerPoint file to link quickly.



To delete the hyperlink link created on PowerPoint, right-click the link button and select **Remove link** .

To see the content, press F5. The buttons will only work when PowerPoint slides are projected, not active during editing.



Basically, the way to create links and create Hyperlink on PowerPoint is similar to that in Word and Excel. Users also have options to insert to other files, web pages, .

See more:

1. How to create motion effects on PowerPoint
2. How to insert text into images in PowerPoint
3. Demonstrate 3D diagram in PowerPoint

I wish you all success!

You finished reading the article "**How to create links in PowerPoint**" edited by the [TipsMake](#) team. We hope this article has provided you with many useful tech tips and tricks. You can search for similar articles on tips and guides. Thank you for reading and for following us regularly.