

How to create image borders in PowerPoint

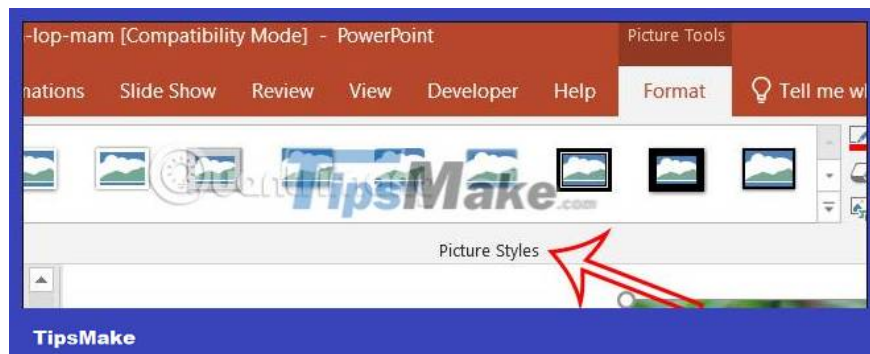
When we edit photos in PowerPoint, we will have the option to add image borders. You can choose many different image border styles in PowerPoint as you like.

One of the ways to create highlights for photos in PowerPoint slides is to create image borders in PowerPoint. When we edit photos in PowerPoint, we will have the option to add image borders. You can choose many different image border styles in PowerPoint as you like. In addition, image borders in PowerPoint also have additional effects. The following article will guide you on creating image borders in PowerPoint.

Instructions for creating image borders in PowerPoint

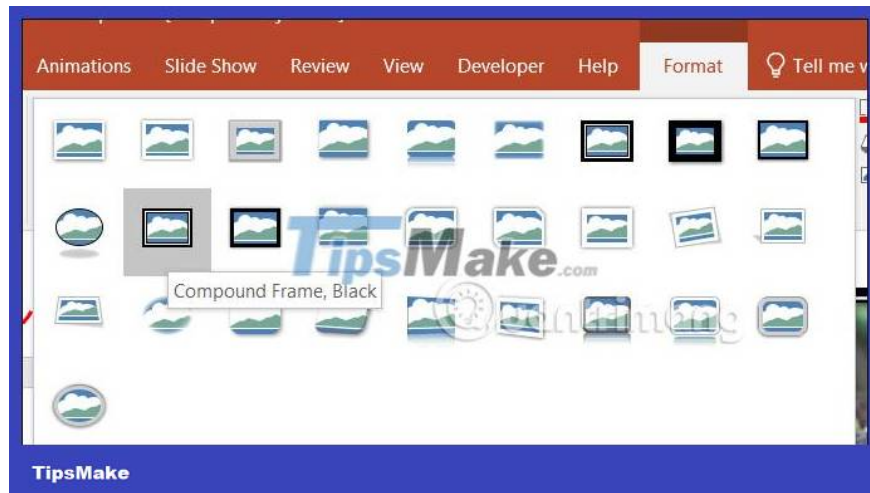
Step 1:

First, you also upload the image to the PowerPoint slide as usual. Then **click Format** and then look down at **the Picture Styles group** to adjust the image style.



Step 2:

At this point, users will see a number of image styles including image border styles for us to choose from.



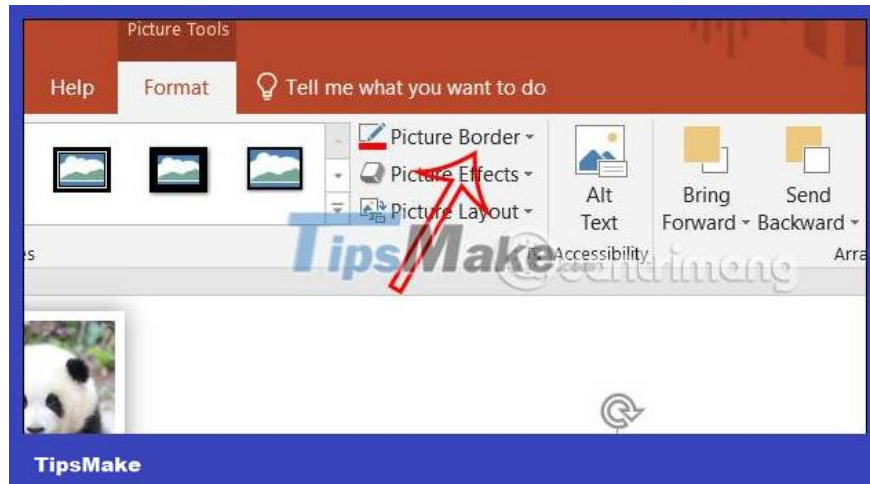
You choose the type of image border you want to use and then display the image border in PowerPoint as shown below.



How to create image borders in PowerPoint manually

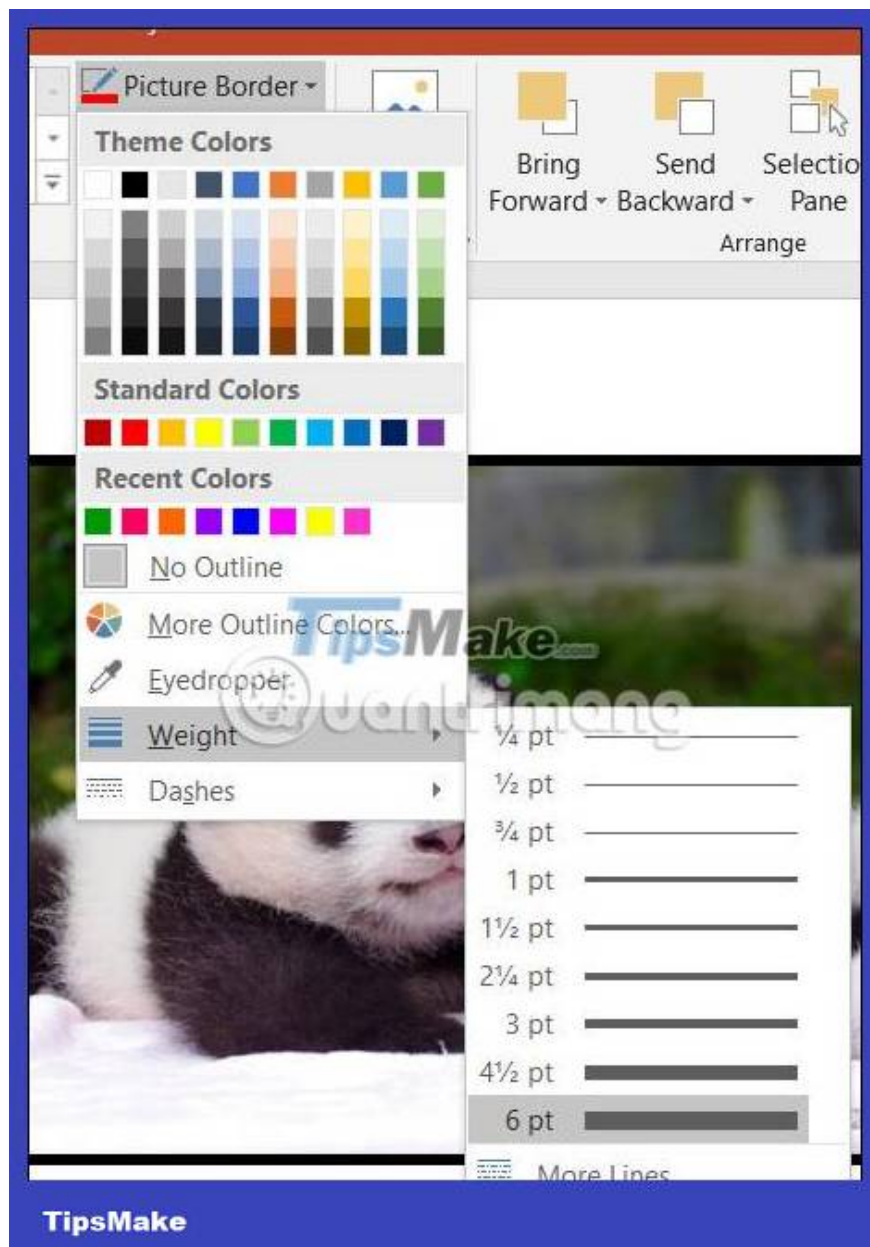
Step 1:

After uploading the image to PowerPoint, click on the image and then **click the Format tab** . Continue clicking **Picture Border** to create image borders.



Step 2:

In this Picture Border option, first click **Weight** to choose **the thickness for the image border** . Click on the border size you need.

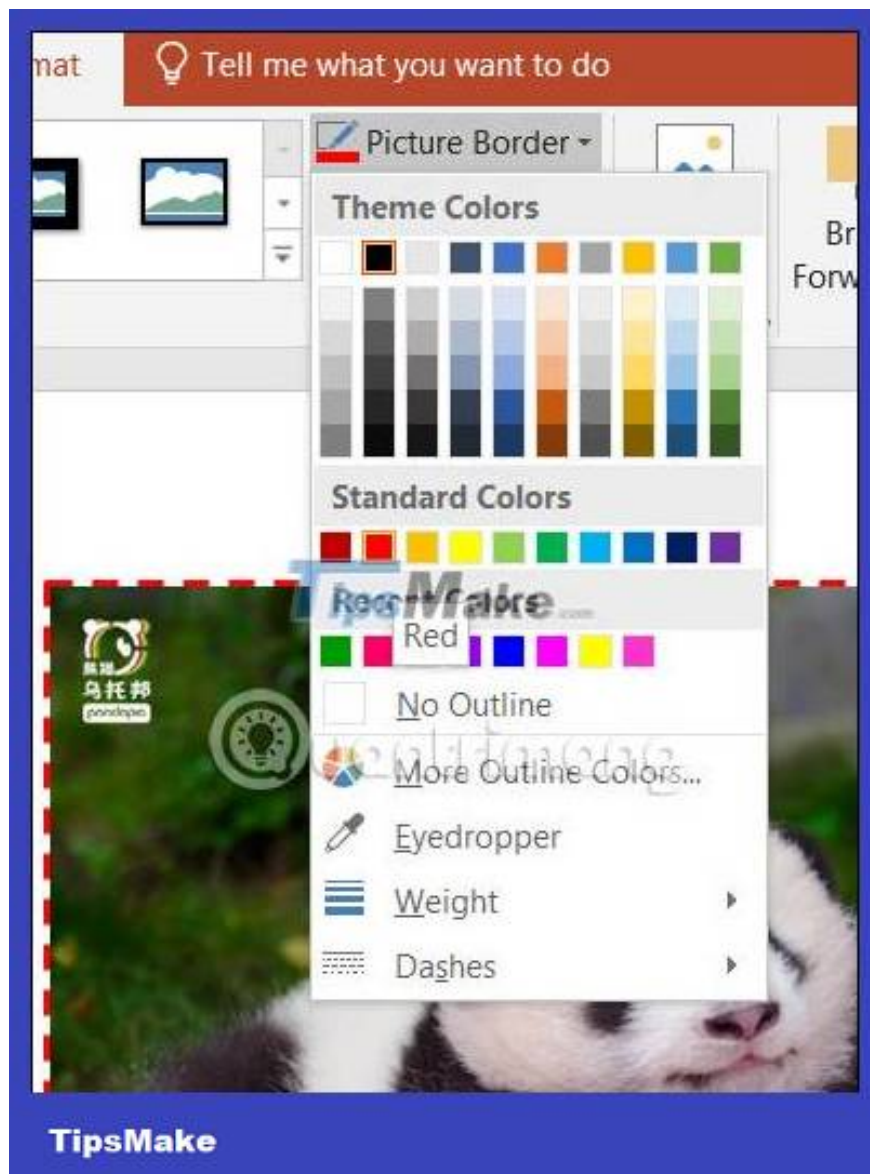


Step 3:

Next **click Dashes** to select the type of image border.



Continue to click on the color box to choose the color for the image border.



As a result, we have an image border in PowerPoint as shown below.



Step 4:

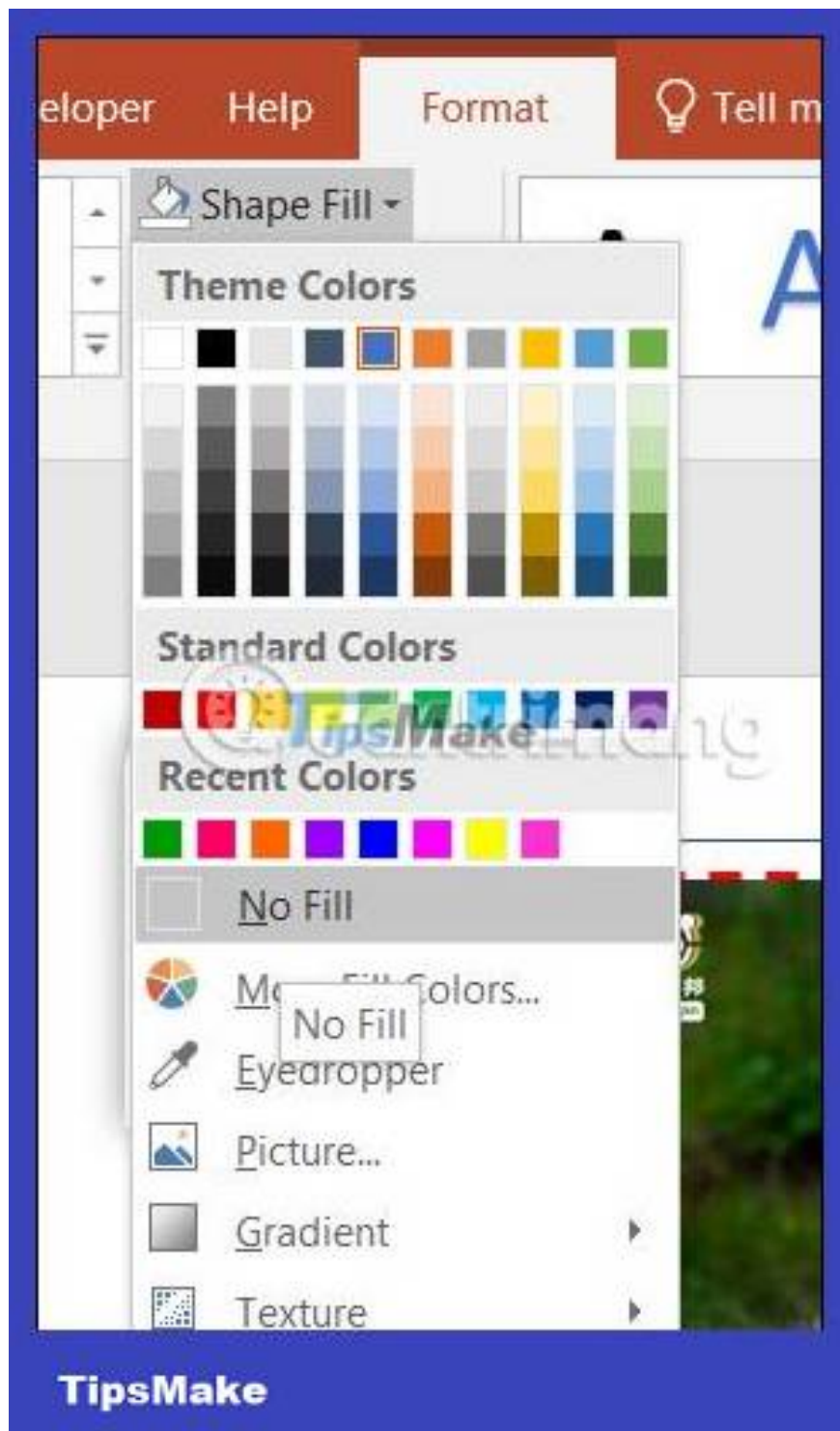
In case you want to **further decorate the image by drawing another border around the existing image border**, **click on Shape** and then **select a frame** that fits the image.

Next, draw a frame around the image.

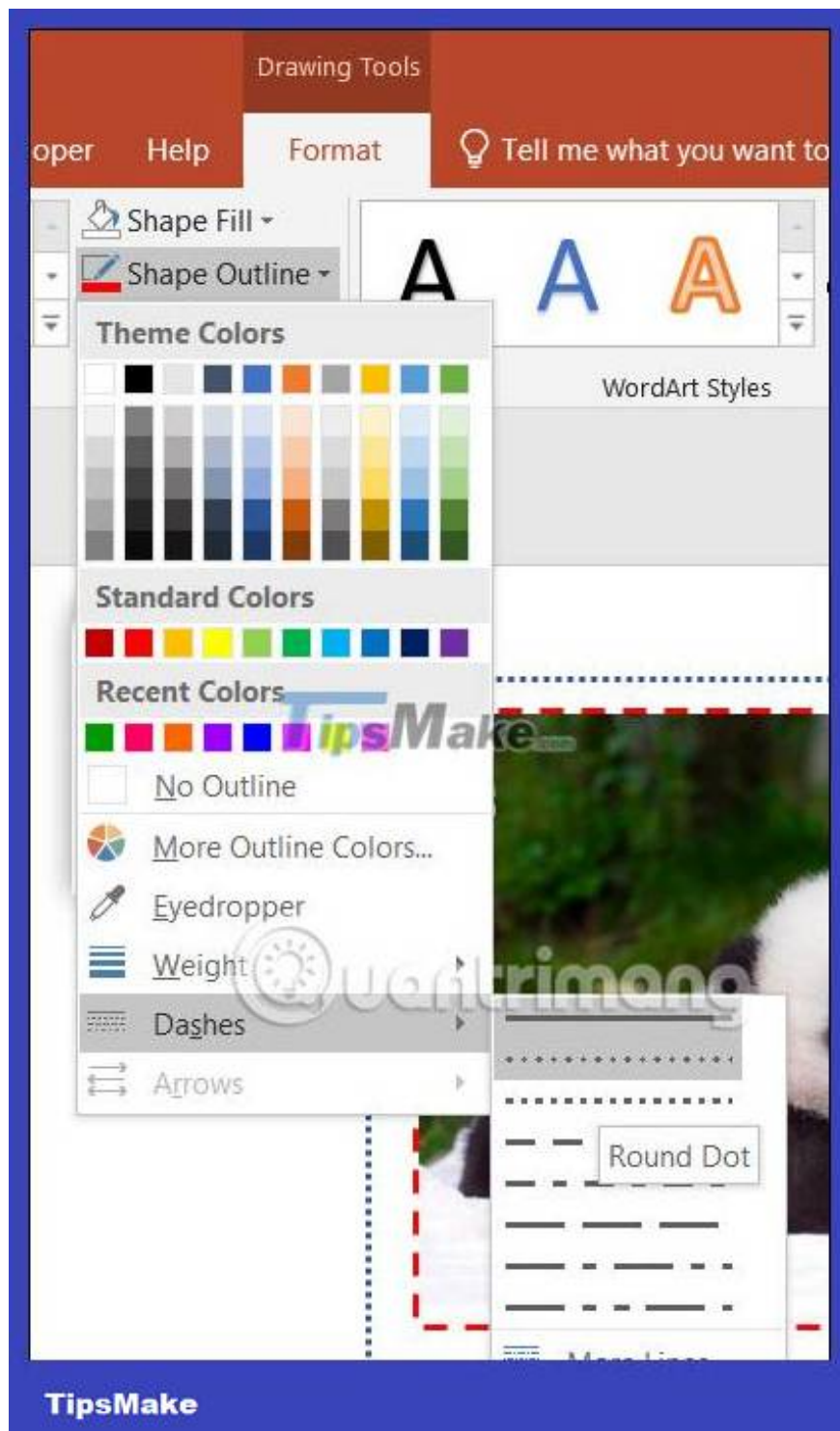


Step 5:

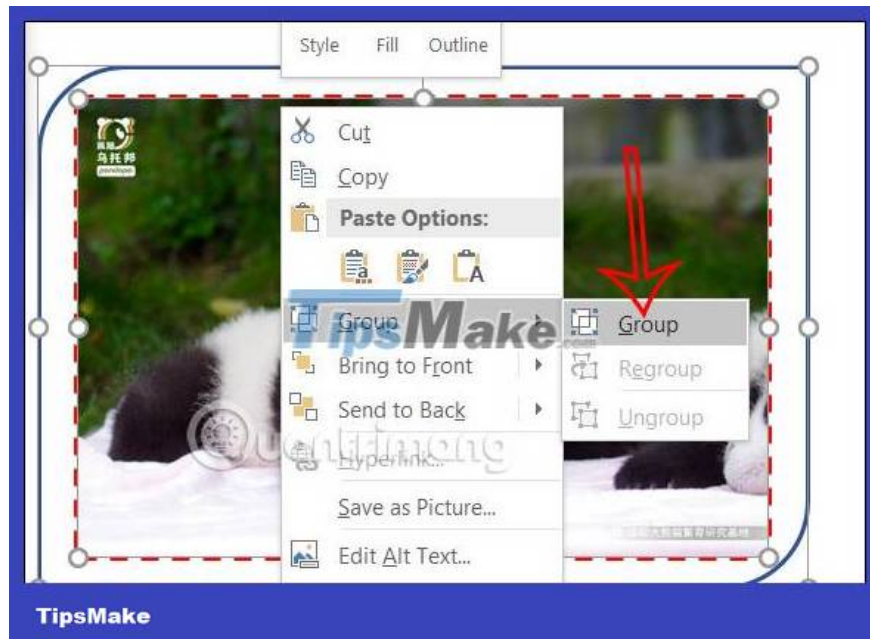
Click on **the frame** then **select Format** , **select Shape Fill** and **click No Fill** .



Then the user also **clicks on Shape Outline** to choose the color for the border, choose the style for the border and you're done.



Finally, you must **group the image and the border created from Shape** , by **clicking on the image** , **pressing the Ctrl key**, then **clicking on the border** . Continue to **right-click and select Group** to group together. When you move the image, you move the border.



You finished reading the article "**How to create image borders in PowerPoint**" edited by the [TipsMake](#) team. We hope this article has provided you with many useful tech tips and tricks. You can search for similar articles on tips and guides. Thank you for reading and for following us regularly.
