

How to create ghost multi-configuration Win 7/8/10 with Easy Sysprep

EasySysprep is a multi-configurable ghost creation software on operating systems from Win XP to Win 10 32bit and 64bit.

Ghost configuration is the process of creating a Win computer with the full operating system including the necessary software, optimized for a computer, and then create a multi-configuration ghost file from the operating system just created to extract. ghost for many computers. This will save time compared to having to reinstall win with many other software.

Currently there are many software that supports creating multi-configurable ghost files, like the SPAT software (System Preparation Assisted Tool) that we have introduced to you in the previous article. However, SPAT will only ghost Win 32bit only. If so, you can use EasySysprep to ghost multi-configuration software from Win XP to Win 10 on both 32bit and 64bit versions.

Note that if you read Easy Sysprep interface in Chinese and have to do many steps, please follow every step in detail.

1. How ghost Windows 7/8, Windows 10 with OneKey Ghost
2. Instructions for creating USB boot with Hiren's BootCD quickly
3. Instructions on how to ghost Windows 7 using USB

1. Prepare the software before ghost:

Before proceeding to create multi-configuration ghost files, Win computers need to ensure the requirements include:

1. Win is installed from CD / DVD / usb or from ISO file.
2. Activate full copyright, optimize the system, turn off services that are not needed and leave only the necessary software for the system, avoid installing lots.
3. Clean up the computer system with software like CCleaner or Clean Master, defragment the hard drive.

Next we will need to download some necessary tools to proceed to create a multi-configuration ghost file.

1. Download the software Easy DriverPack (Wandriver) to update the driver.
2. Download EasySysprep software to create gile ghost. Latest version of Chinese language interface. Support 32bit and 64bit operating systems.

3. WinPE to create ghost in WinPE environment. You can download Win 7 PE ISO using the link <http://4share.vn/f/427674717a7a7075>.

4. Software creates usb-HDD boot in link <http://4share.vn/f/360200050e0f0504>.

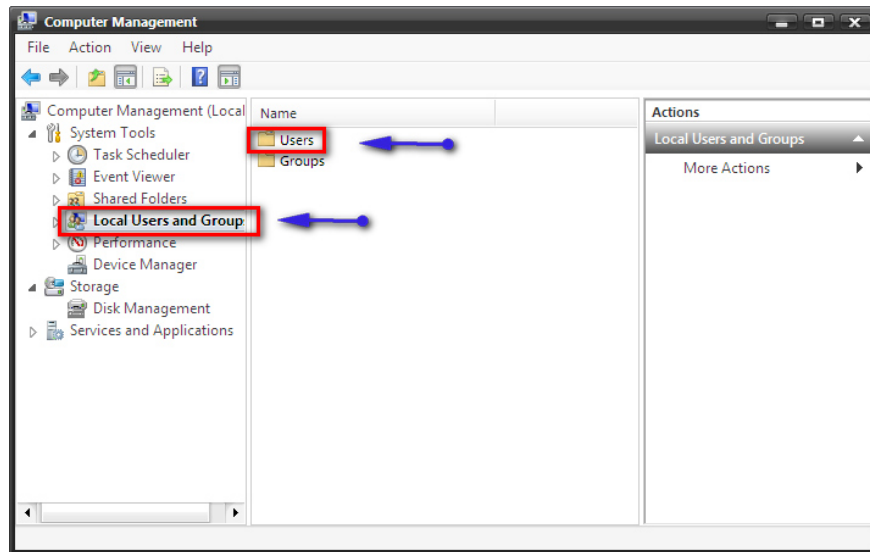
You download the file then unzip, click on the USBZL file to run. Then do as shown below.



2. How to create multi-configuration ghost file:

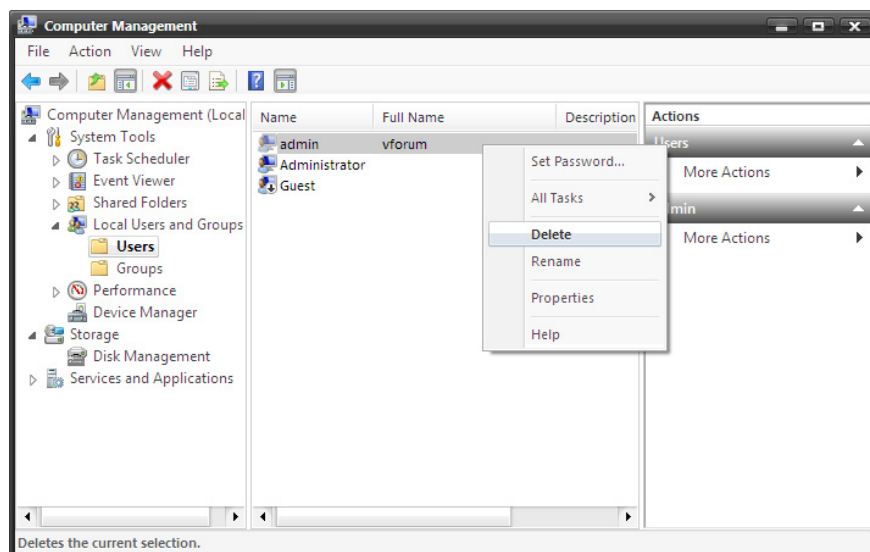
Step 1:

First delete the User login account on the computer to avoid the error of ghost ghosting. Right-click **Computer** and select **Manage**. Next click on **Local Users and Groups** and select **Users**.



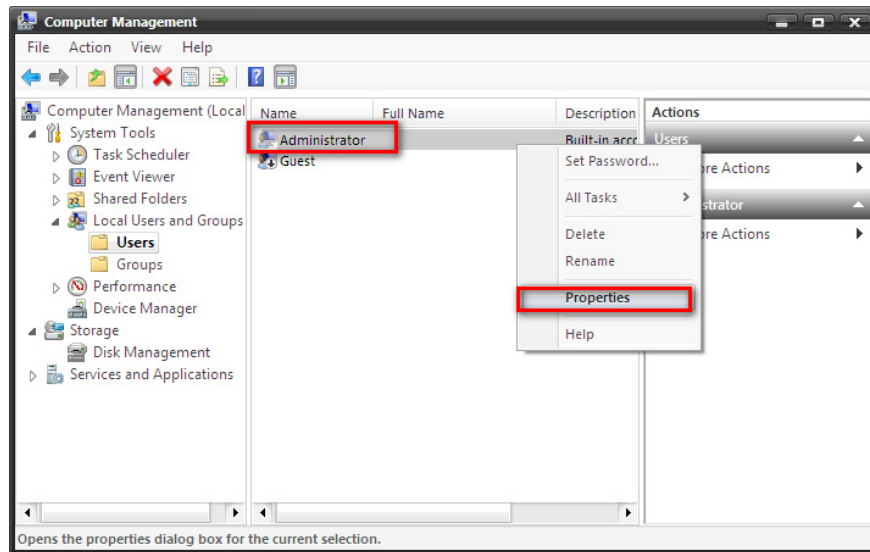
Step 2:

Delete accounts on your computer leaving only Administrator and Guest accounts.



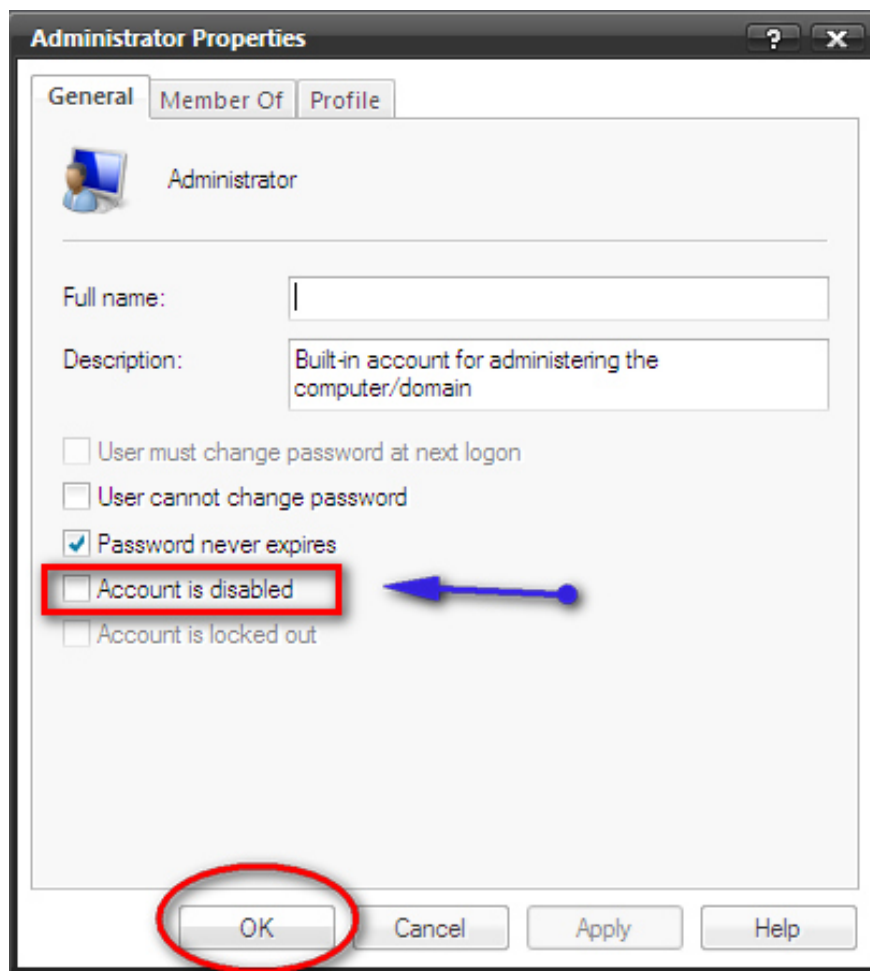
Step 3:

Right-click on the **Administrator** account to activate this account and select **Properties**.



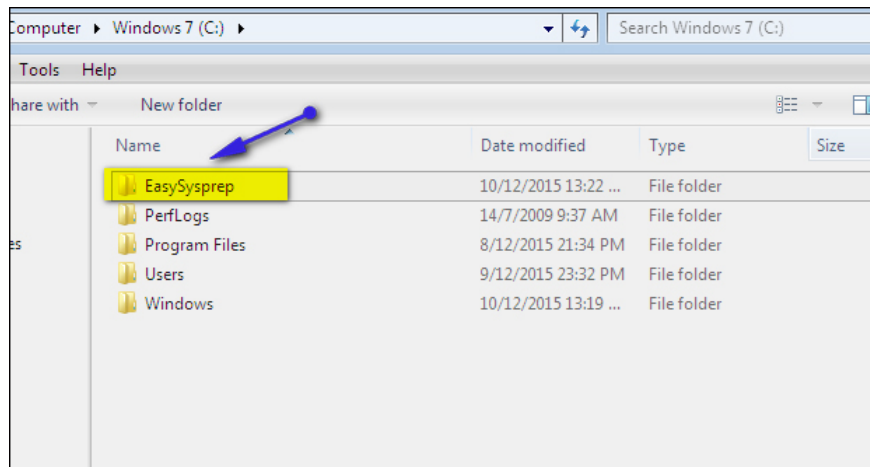
Step 4:

Uncheck the **account is disabled** then click **Apply**> **OK** . Then restart the computer and then boot and access Administrator.



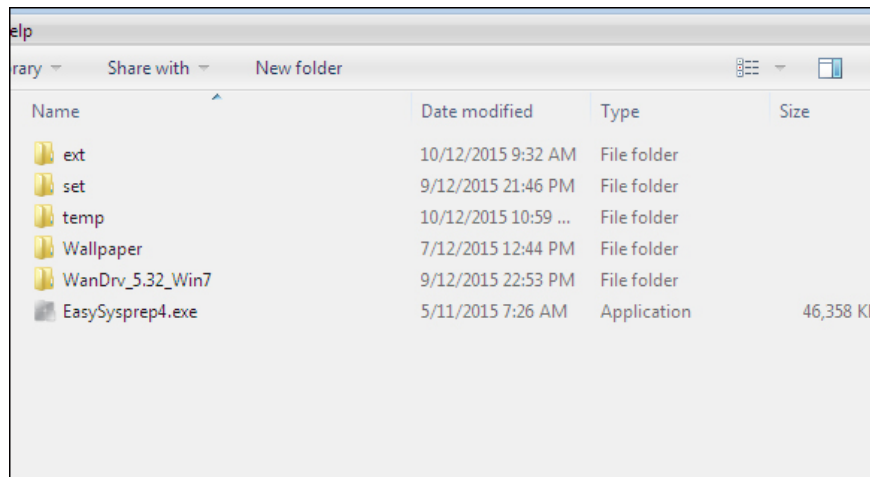
Step 5:

Extract 2 Wandrv and EasySysprep_4.3.28.599. Copy the **EasySysprep_4.3.28.599** folder to the **C drive partition** of the operating system and then rename it to EasySysprep.



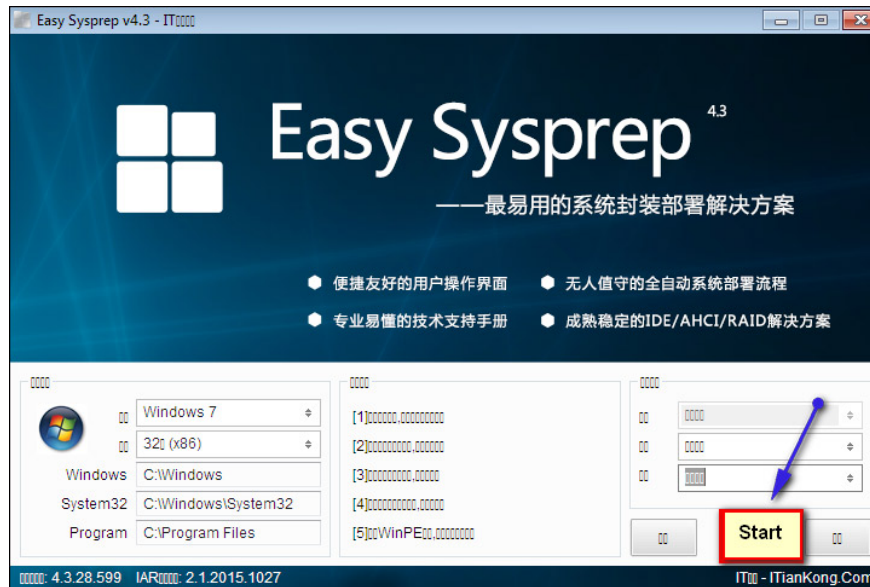
Step 6:

Copy the software folder to update the Wandrv driver to the EasySysprep folder.



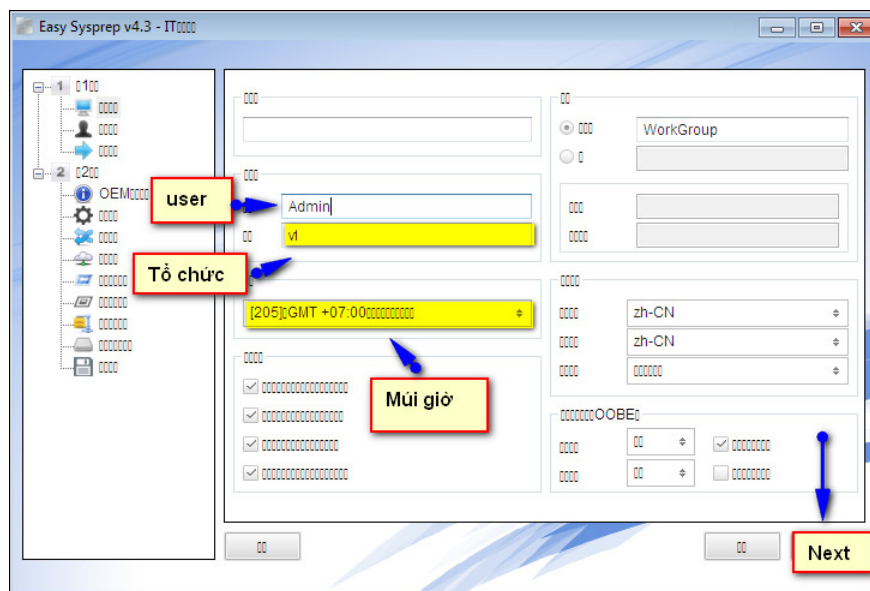
Step 7:

At the C drive partition, click **EasySysprep4.exe** to run the software and click **the Start button** as shown.



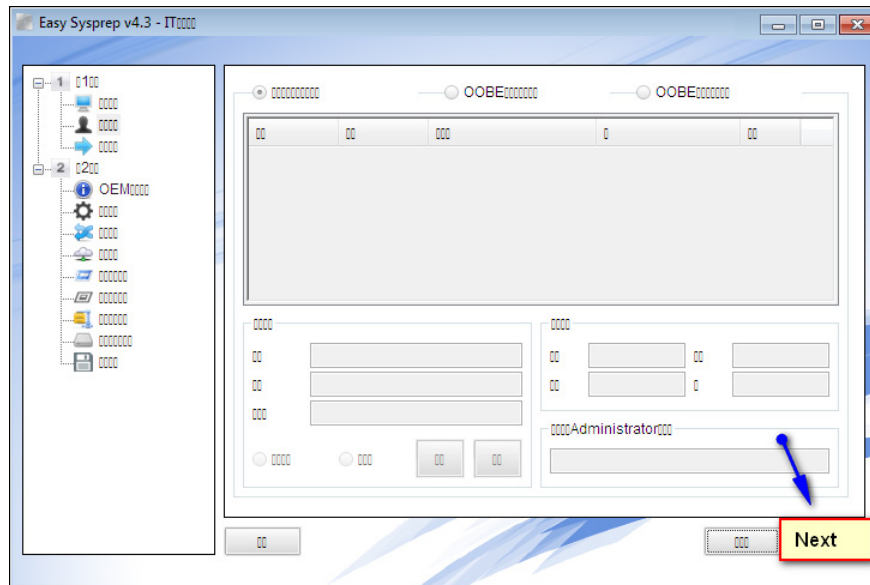
Step 8:

Fill in the user information, set the time zone and **click Next** . Follow the items in the picture.



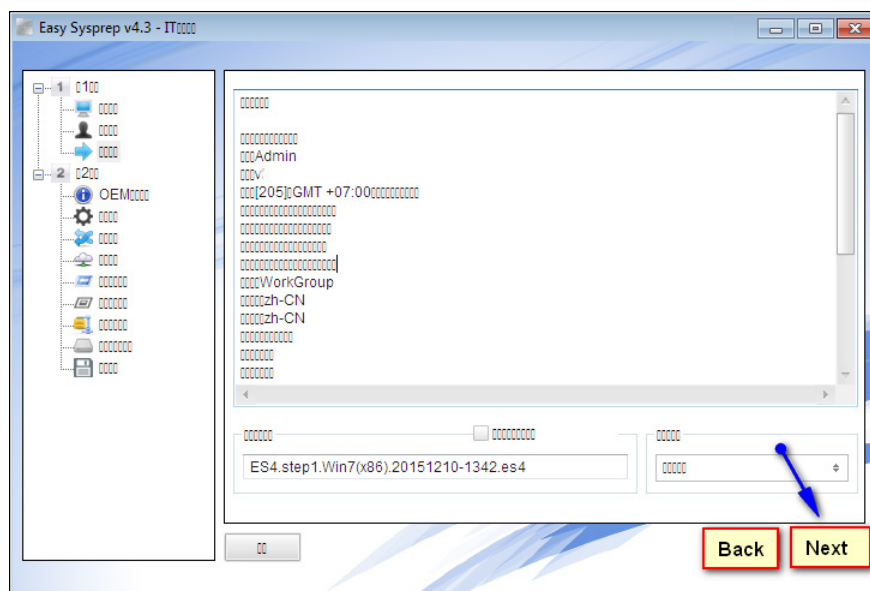
Step 9:

Click **Next** to continue. Then plug in the USB boot to boot into WinPE.



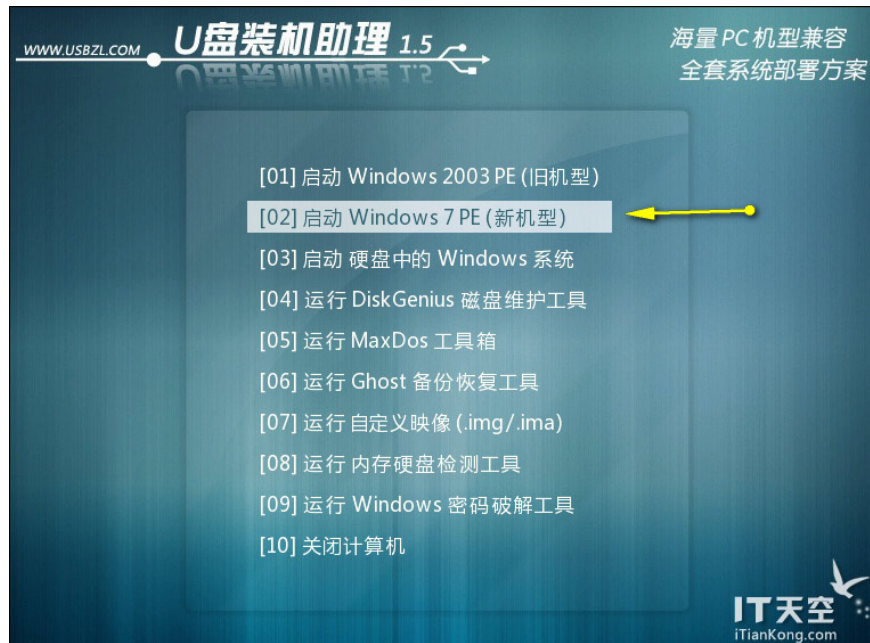
Step 10:

Click **Next** to continue.



Step 11:

Boot into Win 7 PE as shown below.



Step 12:

Access to C drive partition to **run Easy Sysprep.exe file** on WinPE environment. Click the **Start button** .



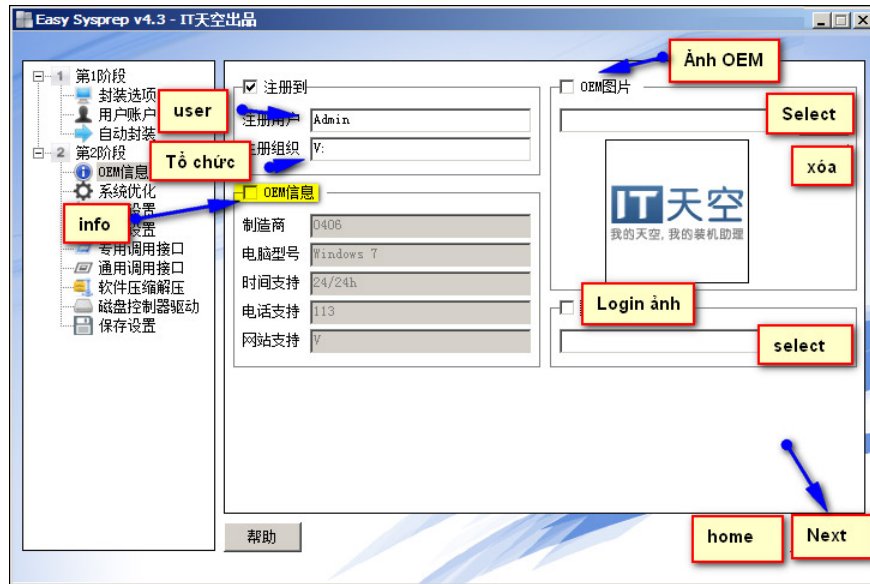
Step 13:

Perform the detailed steps in the image. The **Info** section can be checked in the box to fill in personalization information, or uncheck the box if you don't want to personalize the information on the computer, depending on the user.

Uncheck the **OEM image** and choose to delete the **PEM bipmap image** , uncheck the **Login image** box.

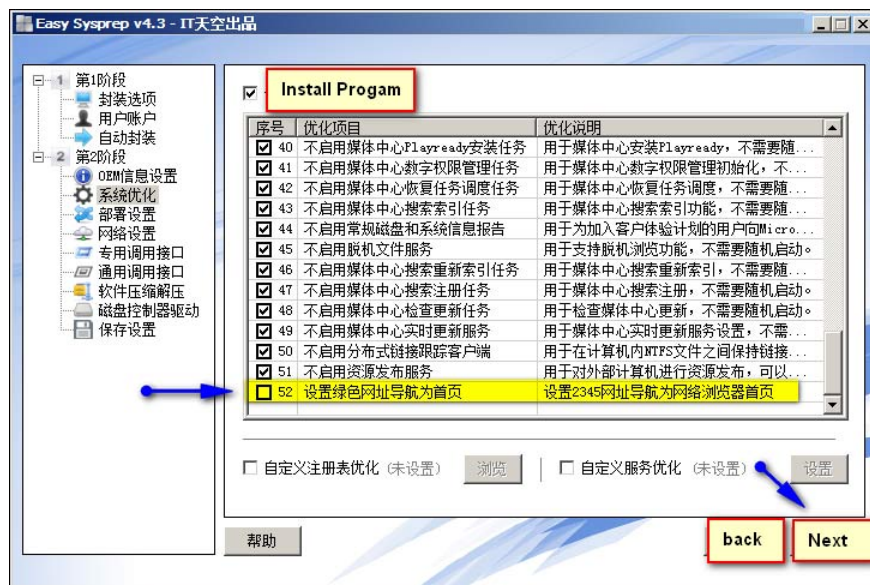
In case the user wants to add an OEM image, click Select and navigate to the bipmap image file.

Click **Next** to continue.



Step 14:

In the **Install Program** frame, scroll down below and then uncheck the check box at section 52, then click **Next** to continue.



Step 15:

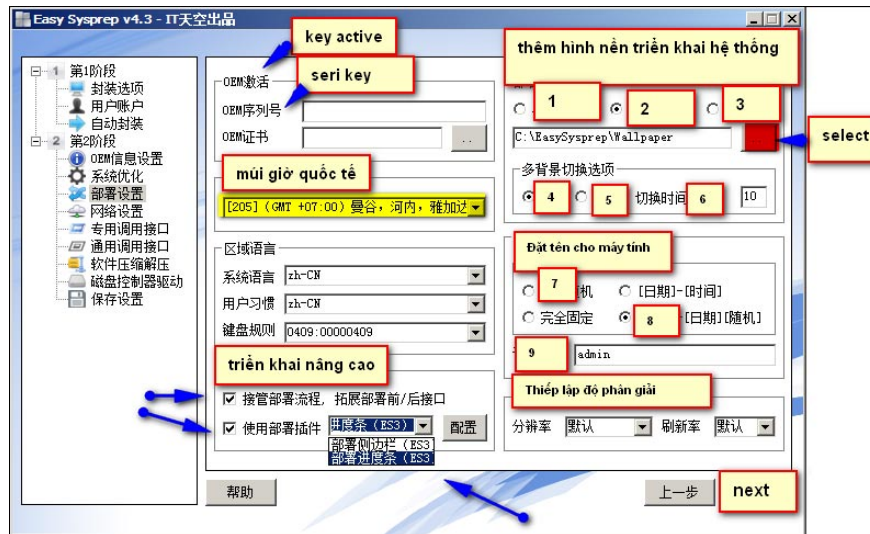
Next, if the computer is from Win 7 and above, you do not need to enter the key, the Vietnam time zone, then select 205.

Next to the system deployment part of the system will have options including:

1. Frame 2 opens multiple images in turn in order. Select the number 2 and then click the square icon to open the background image folder in the C drive partition.
2. Check box 4 to open random images.

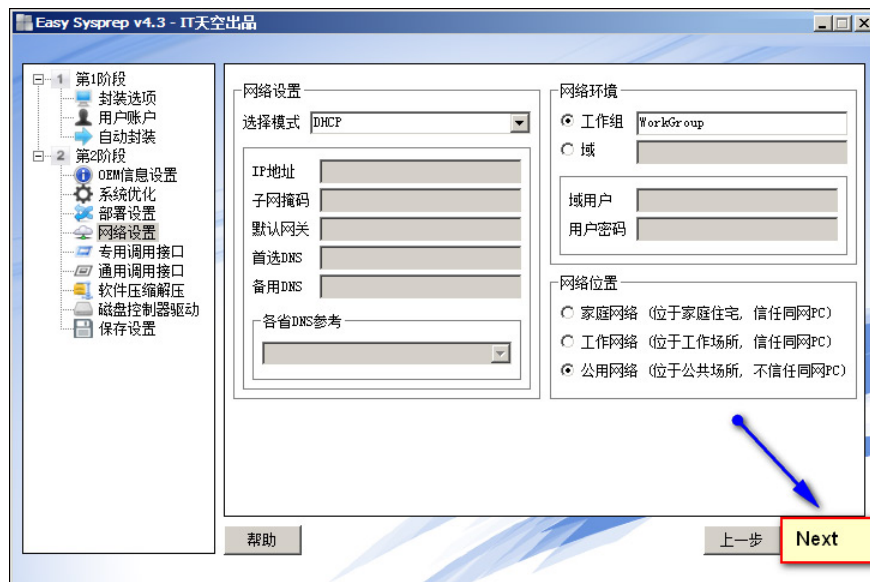
Set the screen resolution to default auto. The advanced deployment section selects the last line in the list. Finally click **Next** .

Keep track of the detailed items in the photo to make.



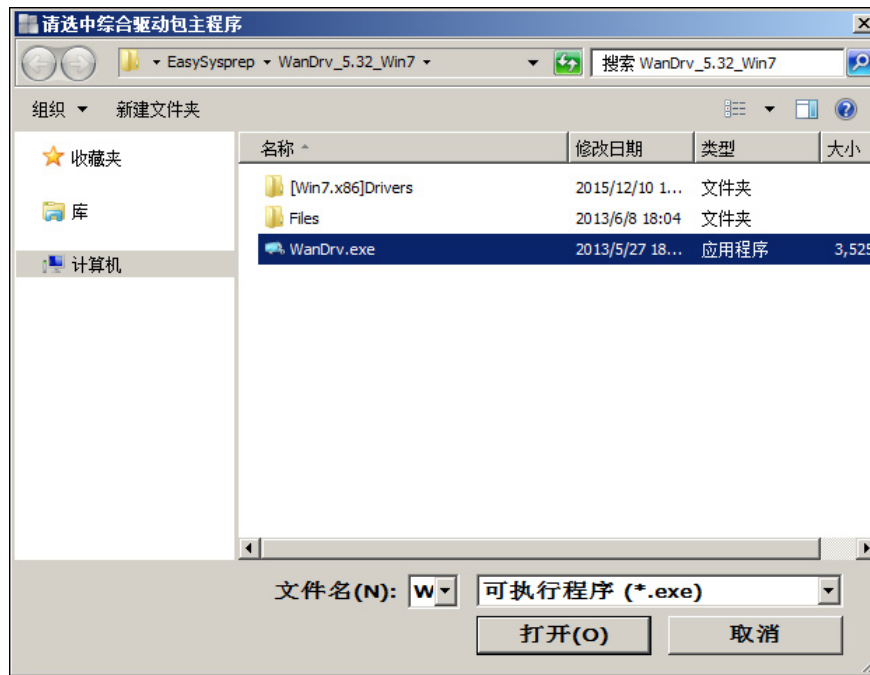
Step 16:

Continue clicking **Next** .



Step 17:

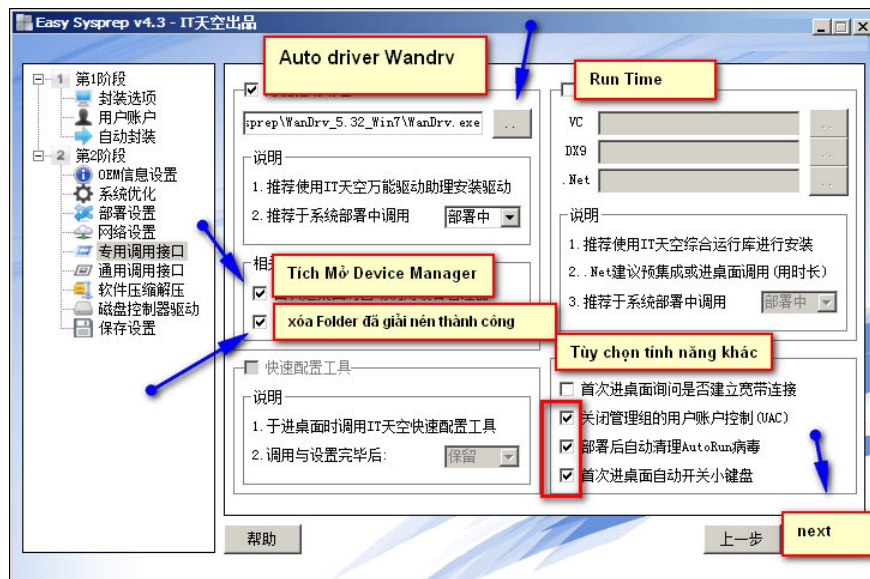
Next in **the first frame Auto driver Wandrv** click on the square icon to add the **installation file Wandrv.exe** in drive C.



Check the box to open **Device Manager** and delete the folder that has been **extracted** successfully.

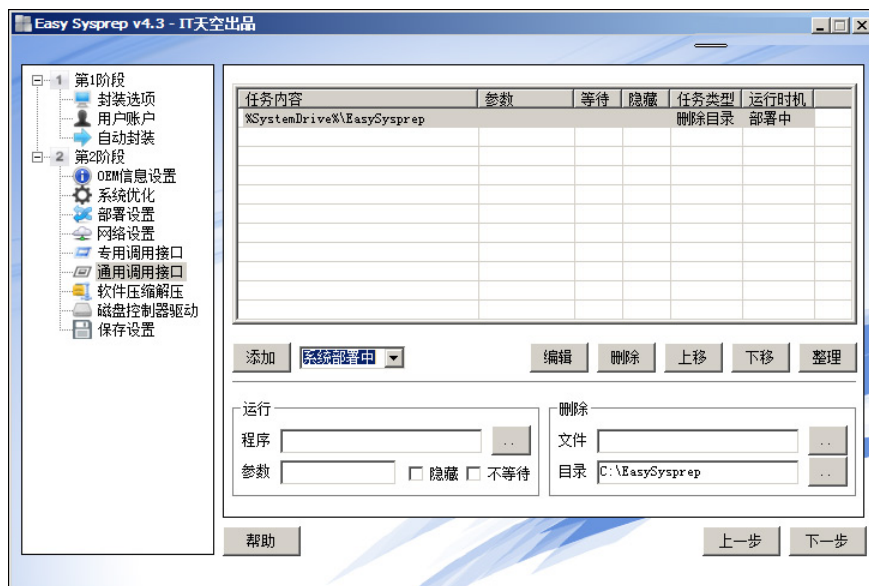
In the **Run Time** section, users can add .NET and DX9.0 items or skip.

In the other feature options frame, select 3 boxes as shown in the picture. Finally click **Next**.

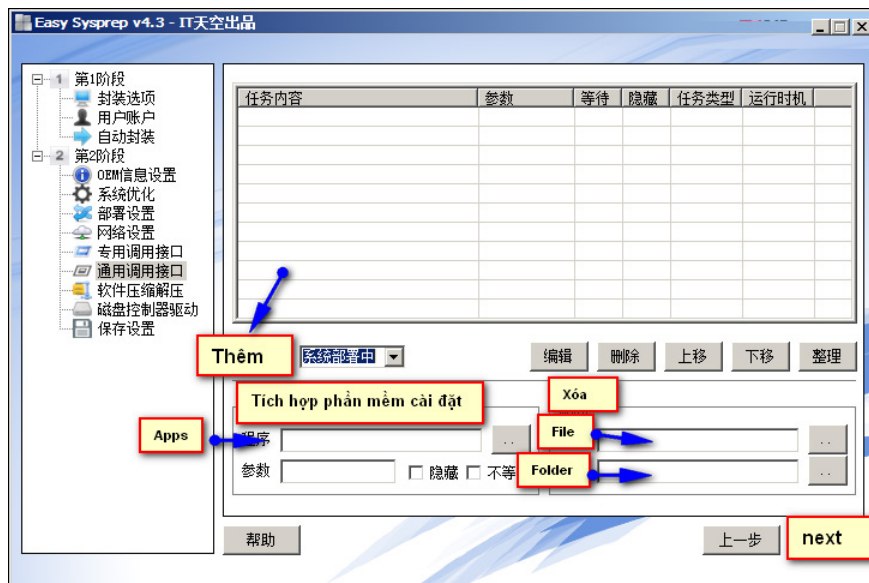


Step 18:

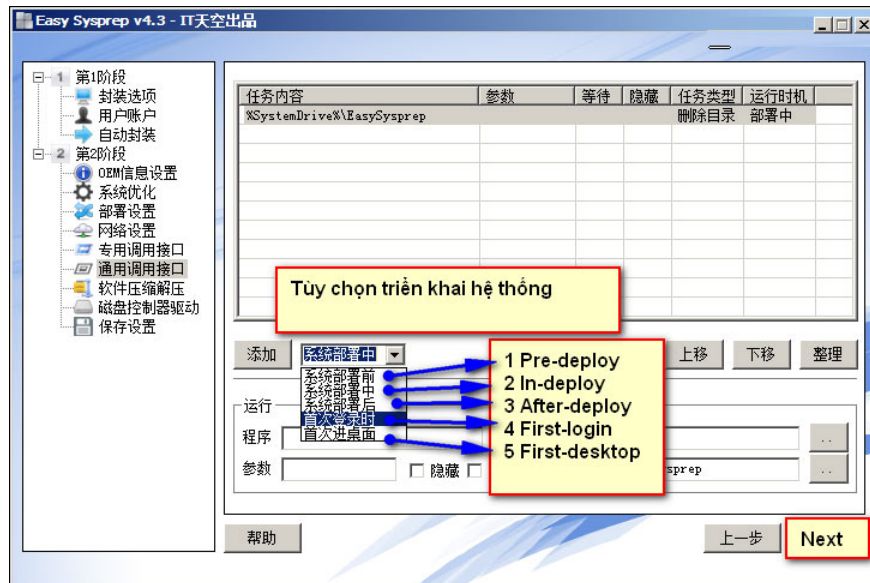
In the **Folder** frame click on the box to add the **EasySysprep** folder in drive C will delete automatically after the ghost file is finished extracting.



Click the **Add** word to put it in the list of deleted options. **Apps** section adds installation software, which can be ignored.



The system deployment options section selects the time to run Wandrv Driver, select the line 4 **First-login** and click **Next** .



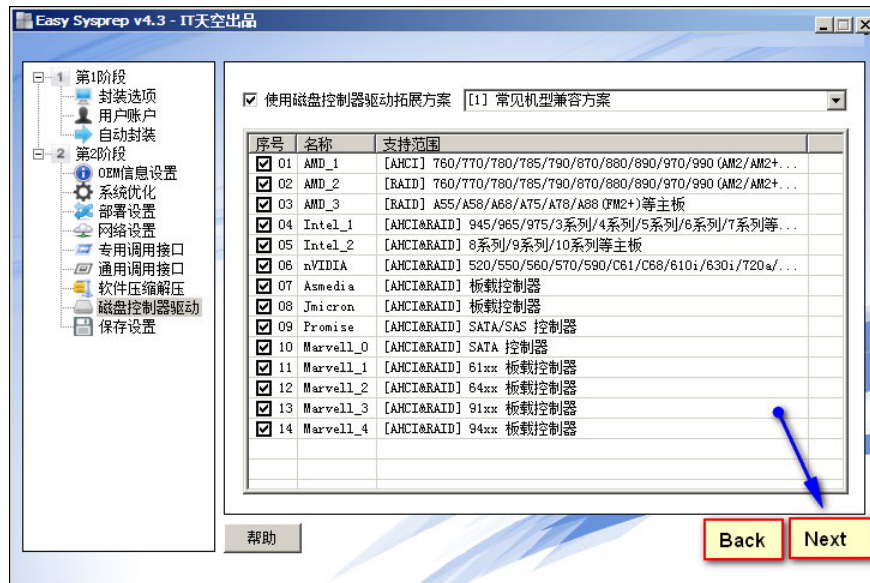
Step 19:

This interface will see a list of pre-installed software, click **Next**.



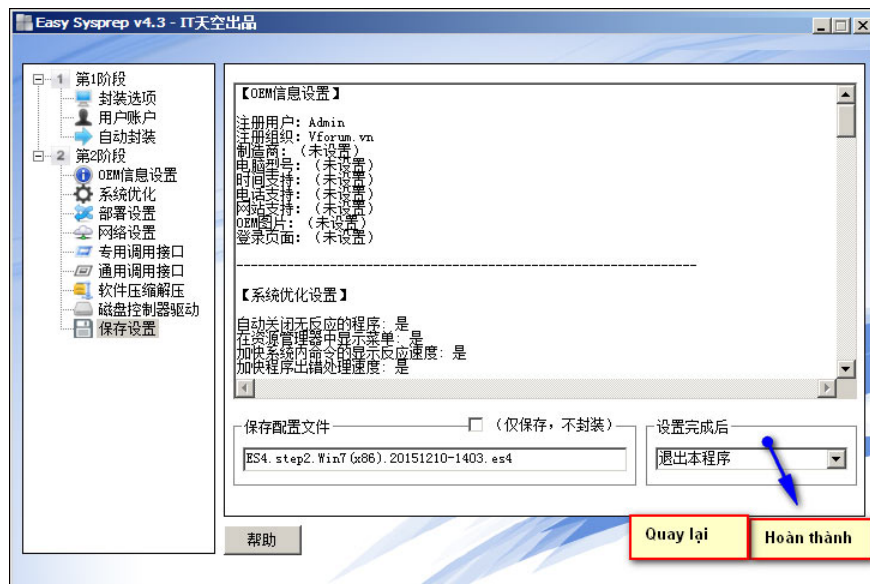
Step 20:

Click **Next** to continue.

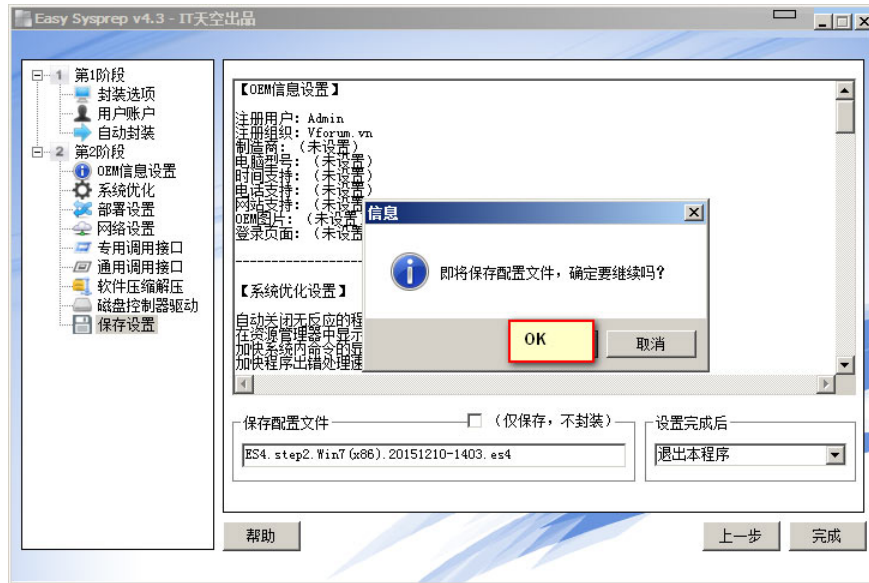


Step 21:

Finally **click Finish** to proceed with the setup.

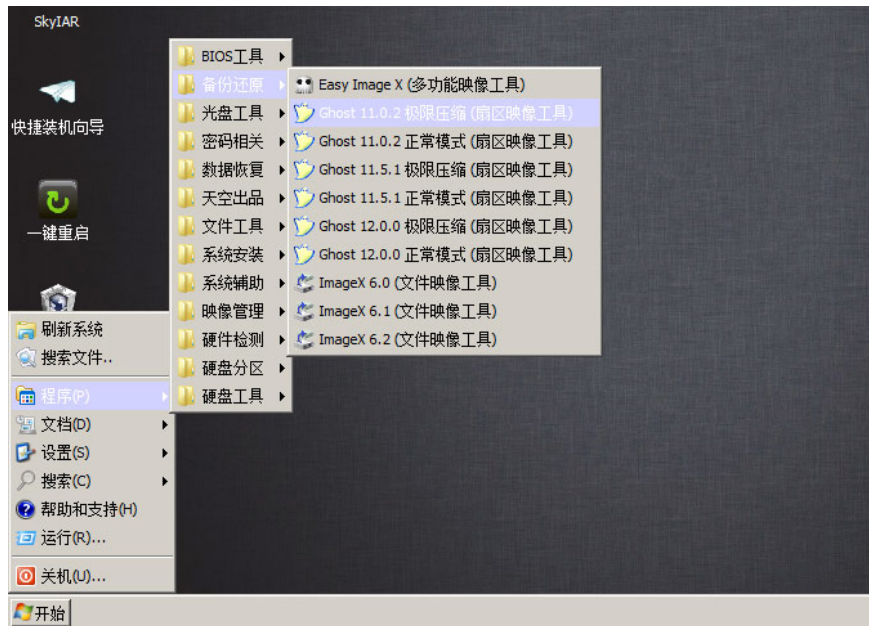


Select **OK** to agree to do so.

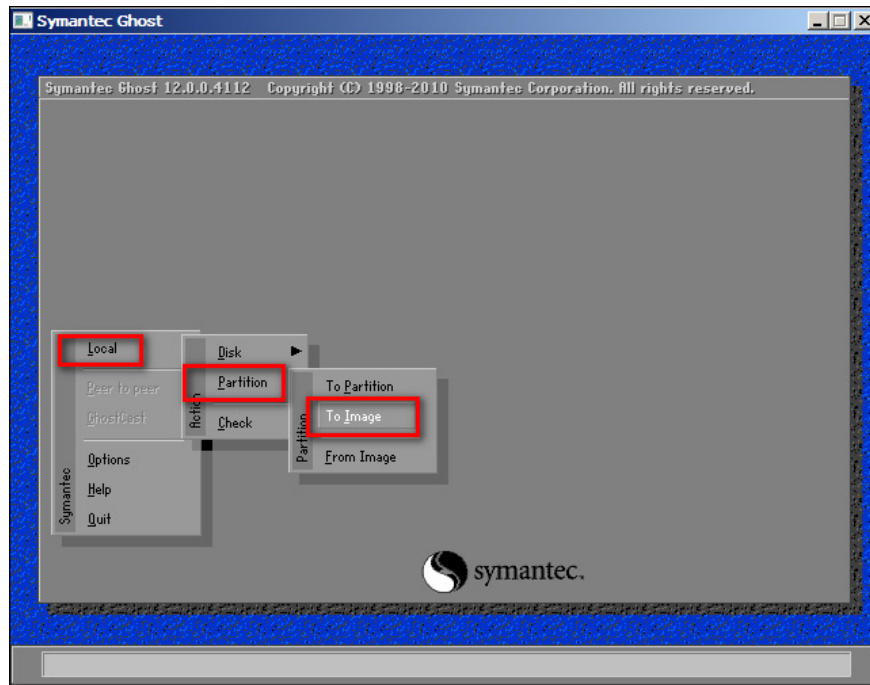


Step 22:

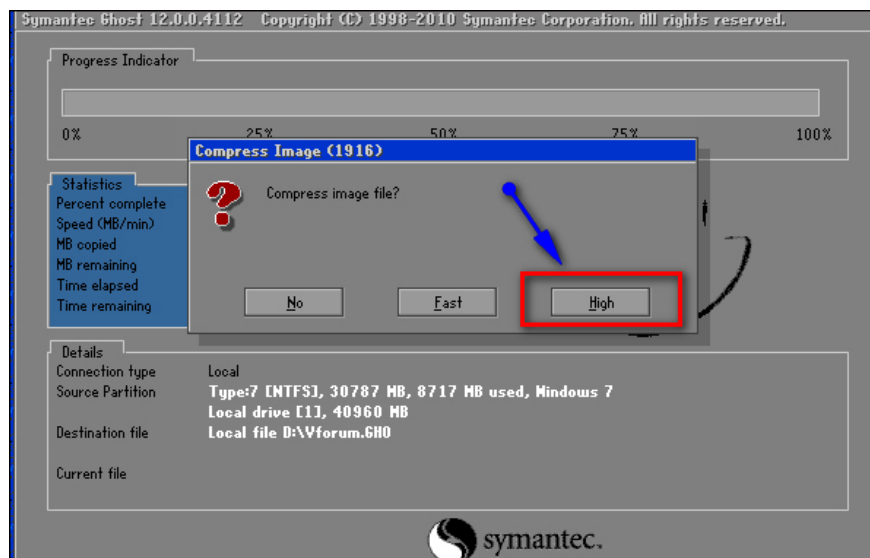
Next, proceed to the multi-configuration ghost on WinPE.



Select **To Image** .



Select the highest compression level **High** in the table. Finally, you wait for the process to extract the completed ghost file.



See also: 20 ways to create the best USB boot.

I wish you all success!

You finished reading the article "**How to create ghost multi-configuration Win 7/8/10 with Easy Sysprep**" edited by the [TipsMake](#) team. We hope this article has provided you with many useful tech tips and tricks. You can search for similar articles on tips and guides. Thank you for reading and for following us regularly.