

# How to Create and Deploy a Java Web App to Google App Engine

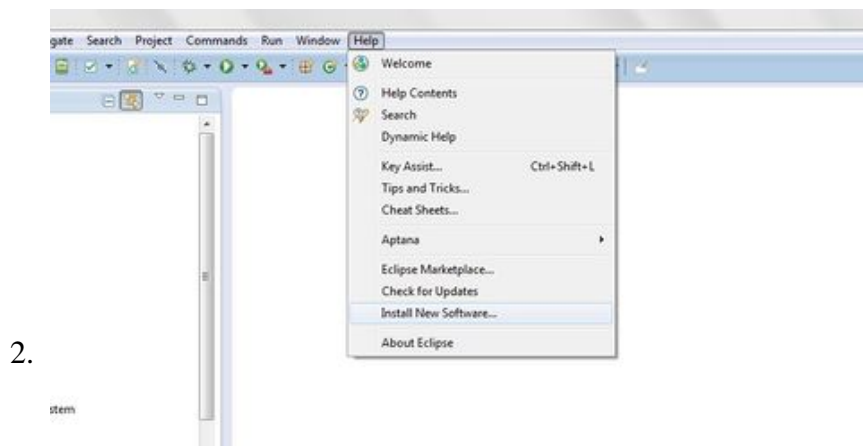
The Google App Engine is a Platform as a Service by Google. With App Engine, there are no servers for you to maintain. You simply upload your application and it's ready to go. This article is for anyone who knows a little bit of web...

Part 1 of 4:

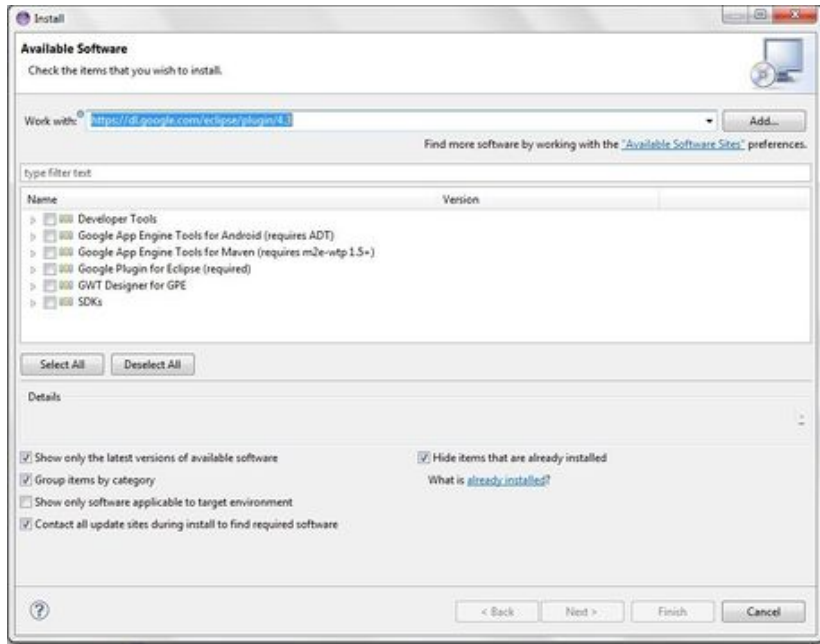
## Setting up the Environment

This procedure installs the Google Plugin for Eclipse and optionally the Android Developer Tools, the Google Web Toolkit SDK, and the Google App Engine SDK.

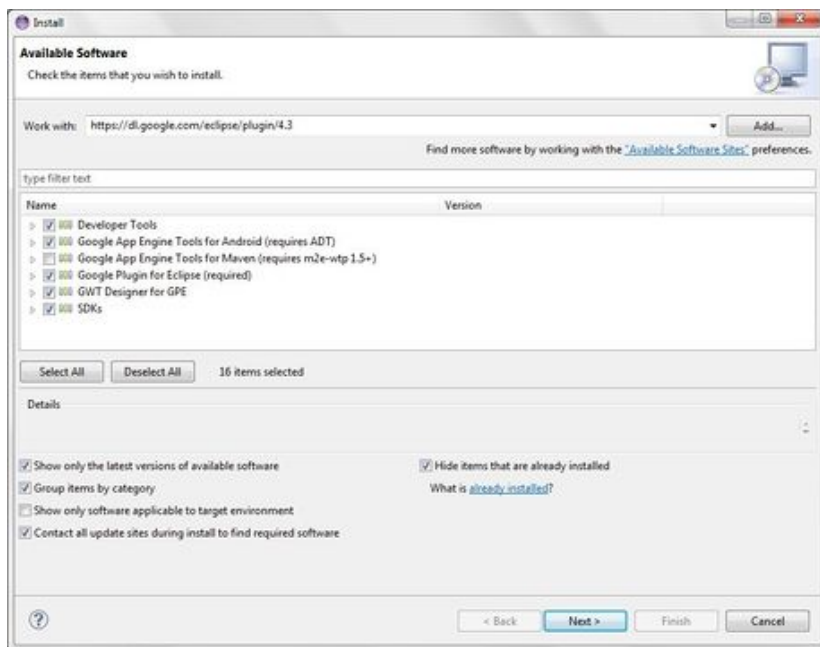
1. **Start Eclipse, running JVM version 1.7.0 or later.**



**Select Help > Install New Software.**

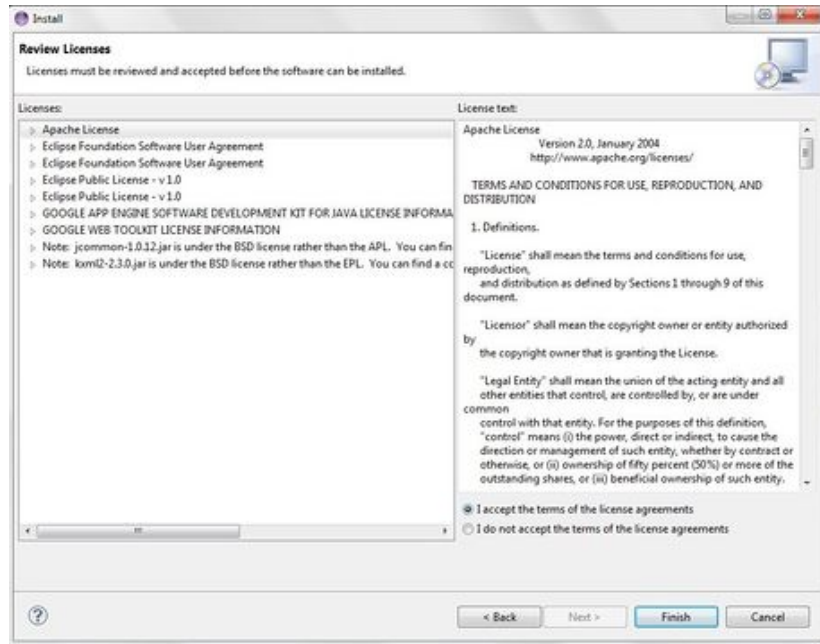


In the dialog that appears, enter the update site URL into the Work with text box: "https://dl.google.com/eclipse/plugin/4.3". Press the **Enter** key.



Select the checkbox next to **Google Plugin for Eclipse (required)**. Click **Next**.  
 5. Review the features that you are about to install. Click **Next**.

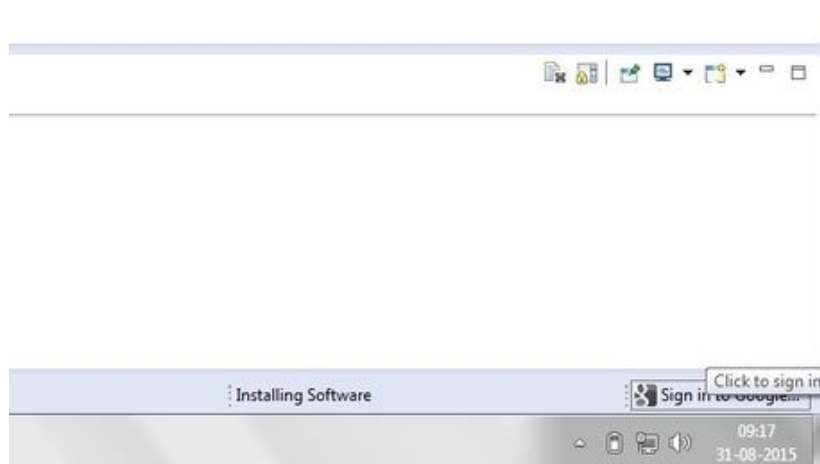
6.



**Read the license agreements and then select "I accept the terms of the license agreements". Click **Finish**.**

7. Click **OK** on the Security Warning.
8. Click **Restart Now** to restart Eclipse.

9.

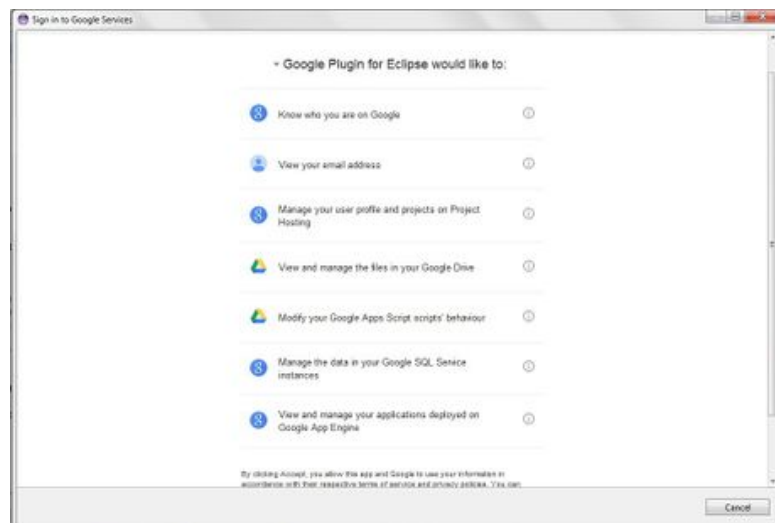


**Sign in to Google by clicking in bottom-right corner.**

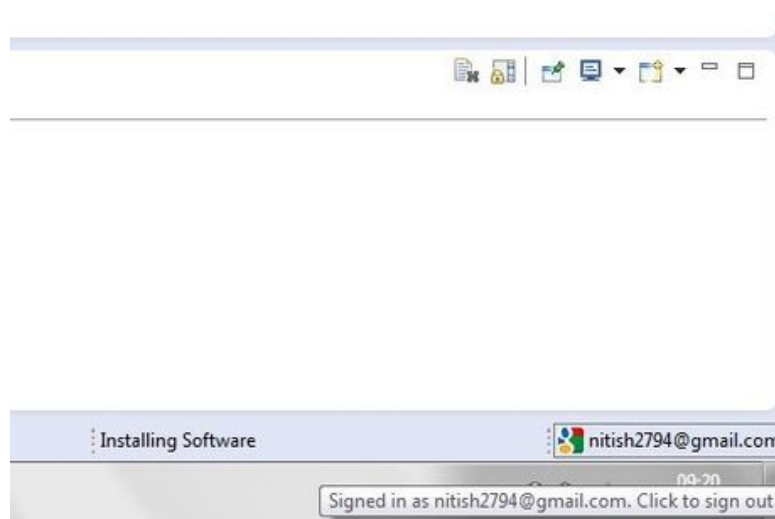
1. Provide the Google Account Credentials and Click **Sign in**.



2. Click 'Accept' after reading the required permissions.



3. Now you are logged in to your Google Account.

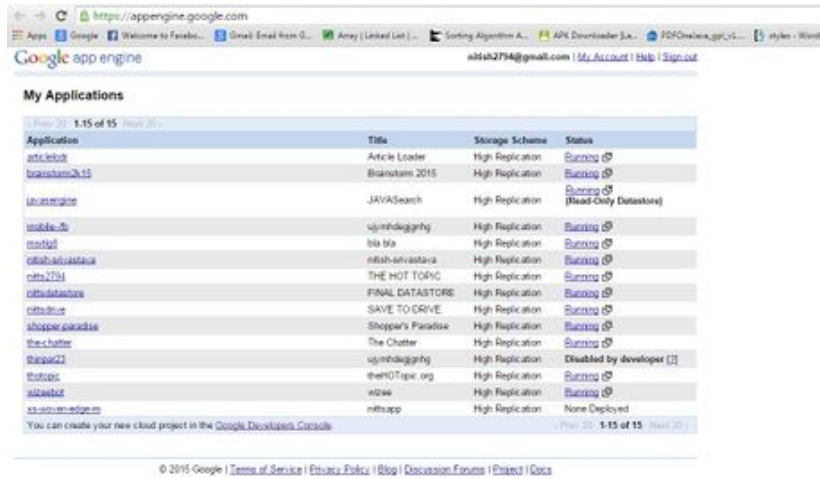


4. You are ready to build App Engine web applications and mobile backends for your Android applications!

Part 2 of 4:

## Creating the Application in GAE

### 1. Go to [appengine.google.com](https://appengine.google.com)



2.

**Login to your account using google account credentials .A new page is opened where it displays all the google app engine applications created by you.**

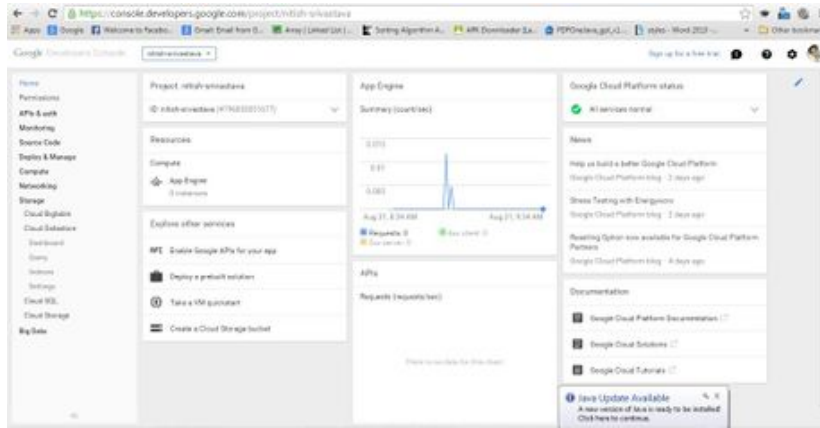
<a href="#">nitishdatastore</a>	FINAL DATASTORE	High
<a href="#">nitishdrive</a>	SAVE TO DRIVE	High
<a href="#">shopper-paradise</a>	Shopper's Paradise	High
<a href="#">the-chatter</a>	The Chatter	High
<a href="#">thinpar23</a>	ujymhdgjngh	High
<a href="#">thotopic</a>	theHOTpic.org	High
<a href="#">wizee-bot</a>	wizee	High
<a href="#">xs-woven-edge-m</a>	nittsapp	High

3.



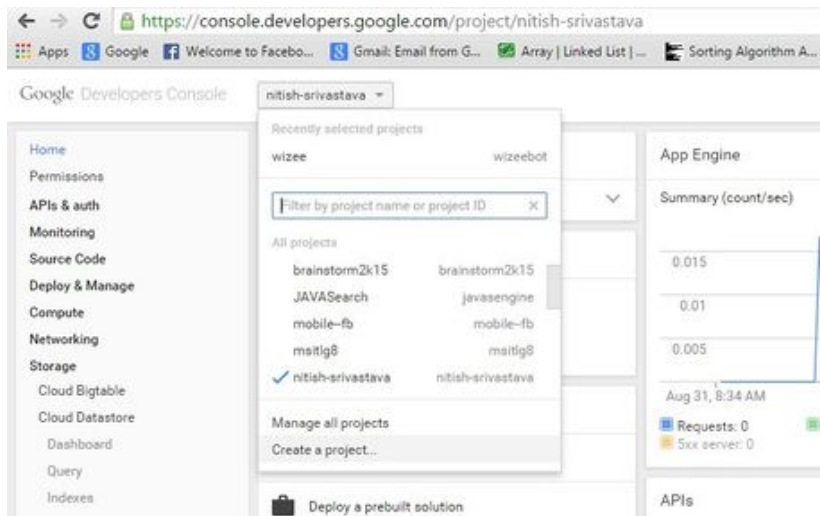
**Click 'Google Developers Console' link. A new window opens.**

4.



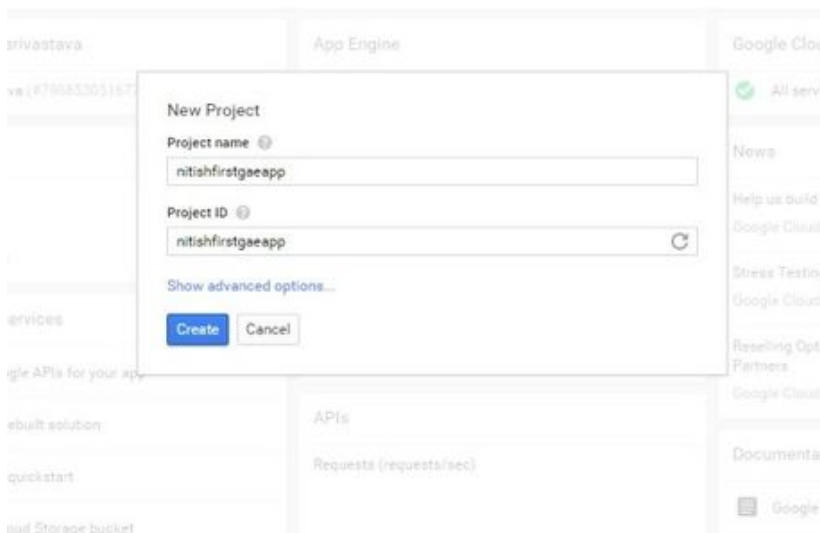
**Google Developers Console is opened.**

5.



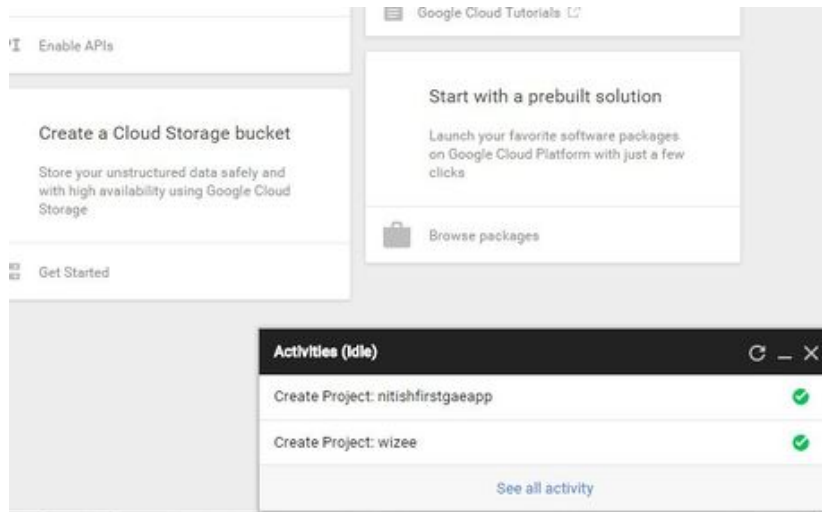
**Click 'Create new Project'.**

6.



**Enter the project name and edit the app ID as desired but it must be unique. An error is shown if the app id is not available.**

7.

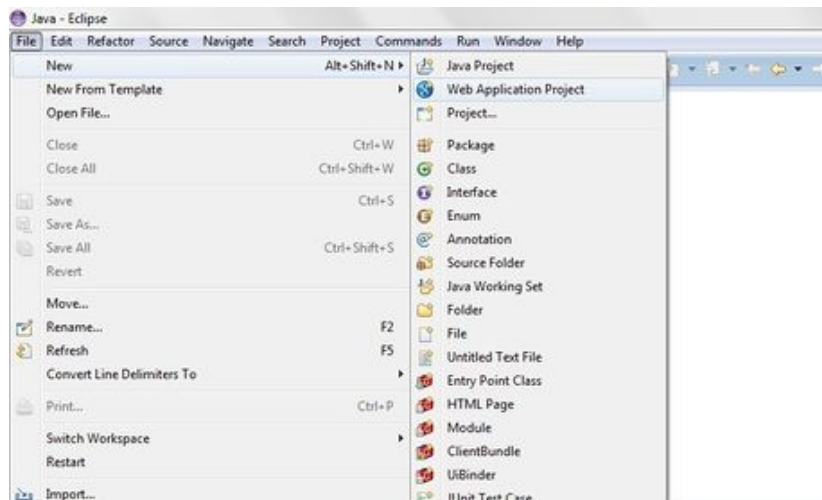


Click **Create**. Your newly created app is ready. Now you can deploy the java web app code to this app id.

Part 3 of 4:

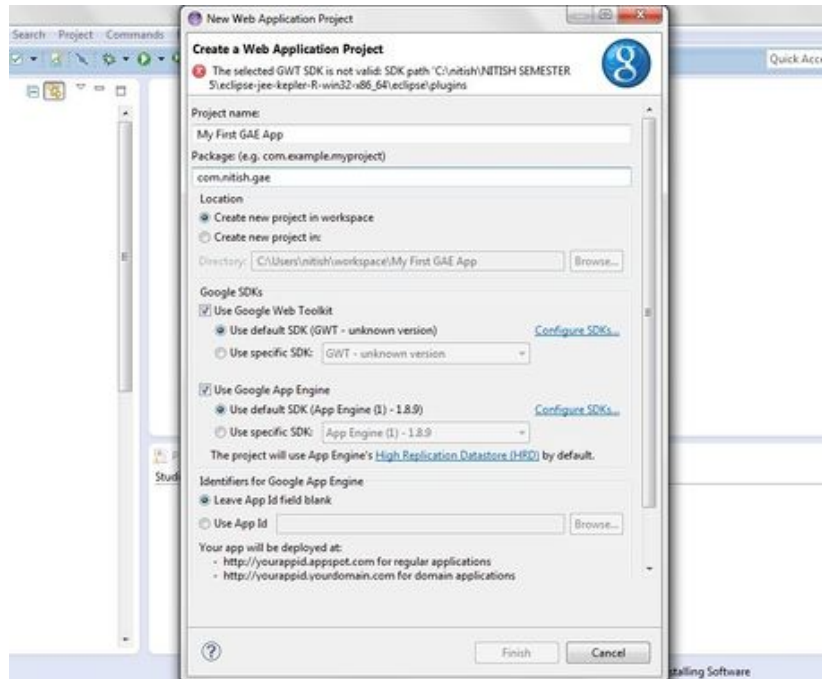
## Creating the Application in Eclipse

1.



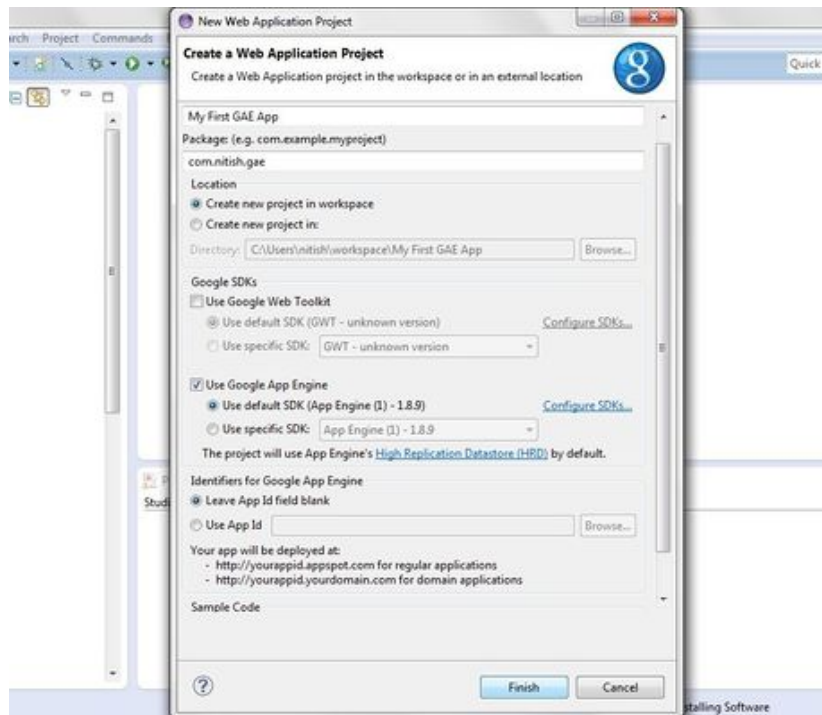
**Open Eclipse.** Go to File > New > Web Application Project.

2.



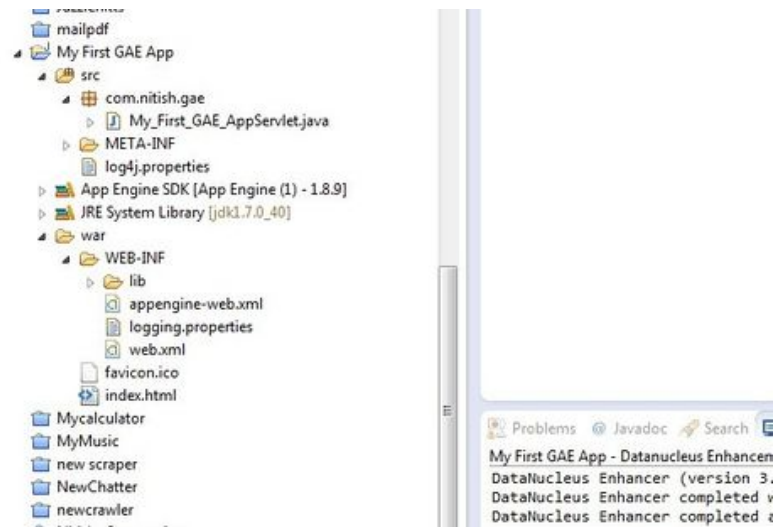
Enter the project name and package name. Uncheck the Google Web Toolkit.

3.

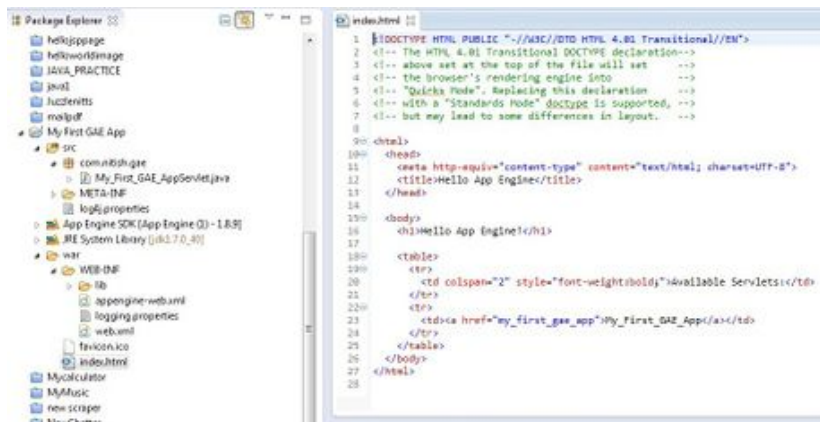


Click **Finish**.

1. Your project folder and its internal hierarchy will be created as shown in the figure.

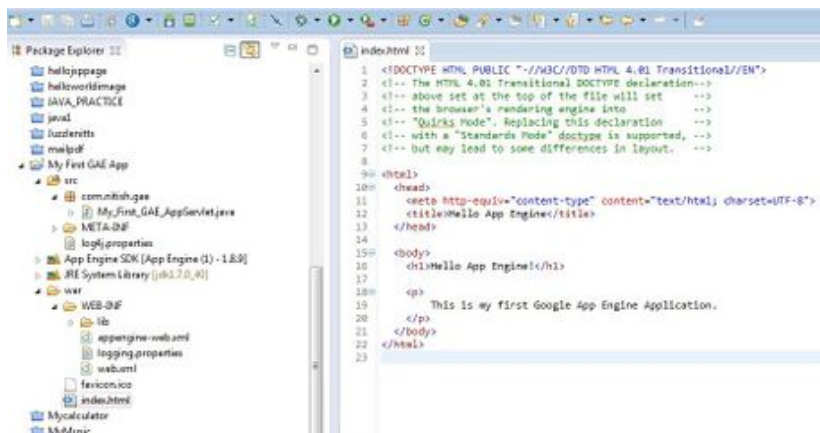


4.

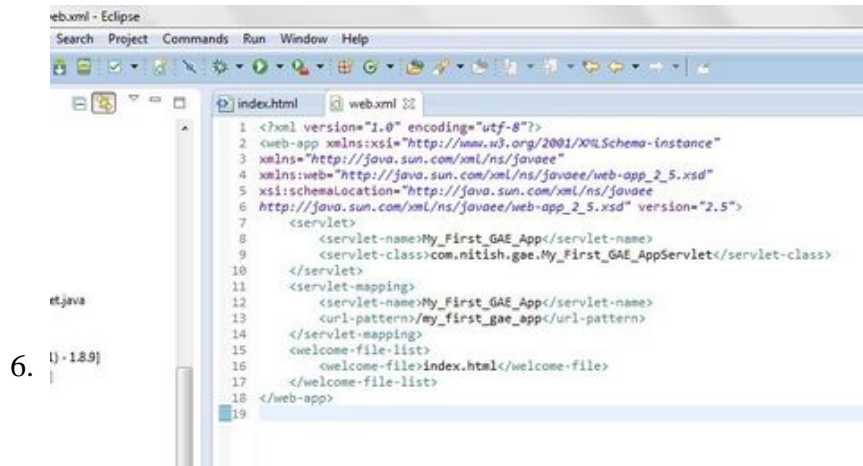


Open index.html which is present in the war folder of your project.

5.



Edit the HTML as desired. Currently we are not using any servlet hence remove the servlet link from the html.



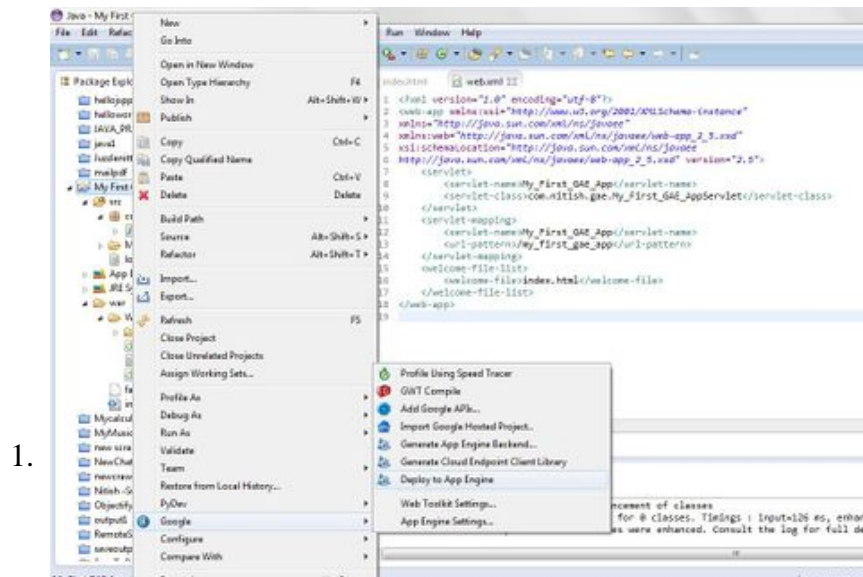
6.

Open web.xml and make sure that index.html is set as the welcome file.

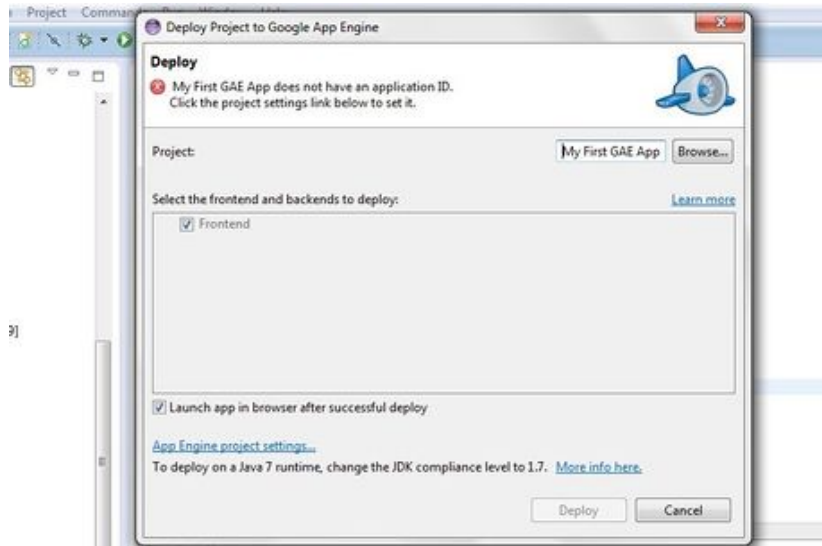
7. Save the project.

Part 4 of 4:

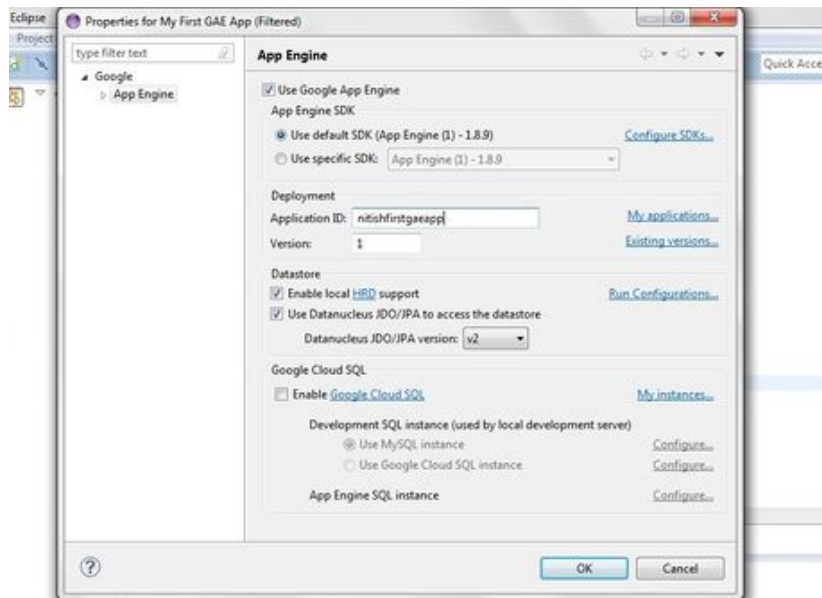
## Deploying the App to Google App Engine



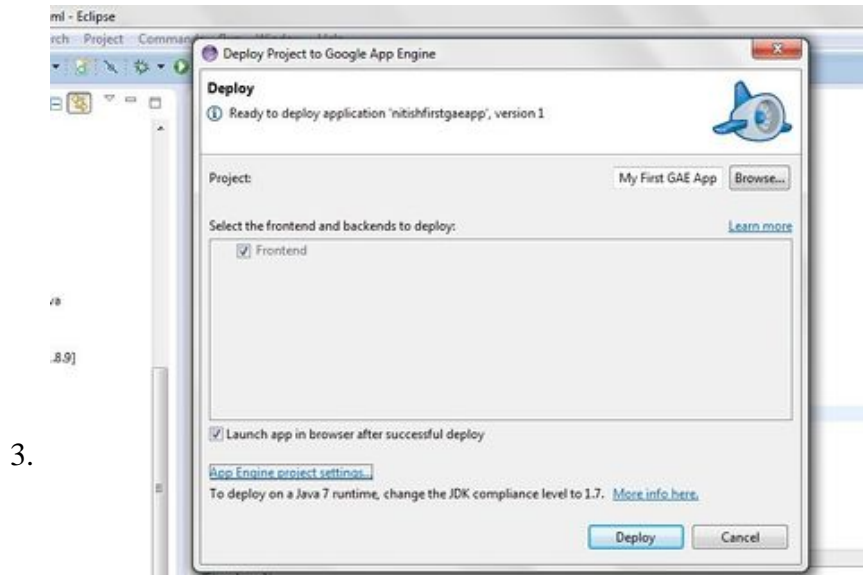
1.



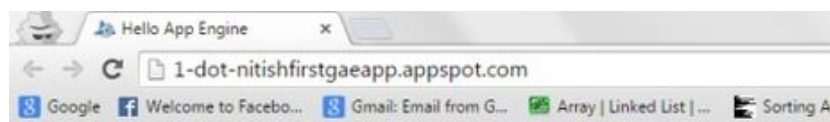
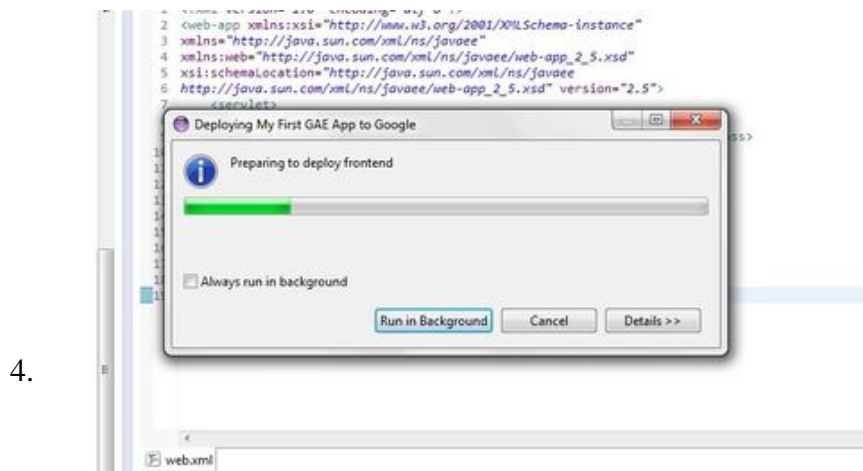
**Right click on the project name in the package explorer. Go to Deploy > Google #App Engine. A window will pop-up.**



**Click on the 'Application Settings' link. A new window will pop-up.**



Enter the App ID which you previously created and click **OK**. Click **Deploy**.



# Hello App Engine!

This is my first Google App Engine Application.

**After the app is deployed, it will open in the browser automatically.** The app will be available at [www.app-id.appspot.com](http://www.app-id.appspot.com).

You finished reading the article "**How to Create and Deploy a Java Web App to Google App Engine**" edited by the [TipsMake](#) team. We hope this article has provided you with many useful tech tips and tricks. You can search for similar articles on tips and guides. Thank you for reading and for following us regularly.

---