

How to create a shortcut to quickly access incognito mode on Chrome, Firefox and Edge

In this article, we will guide you how to create shortcuts to quickly access incognito mode of popular browsers such as Google Chrome, Mozilla Firefox and Microsoft Edge.

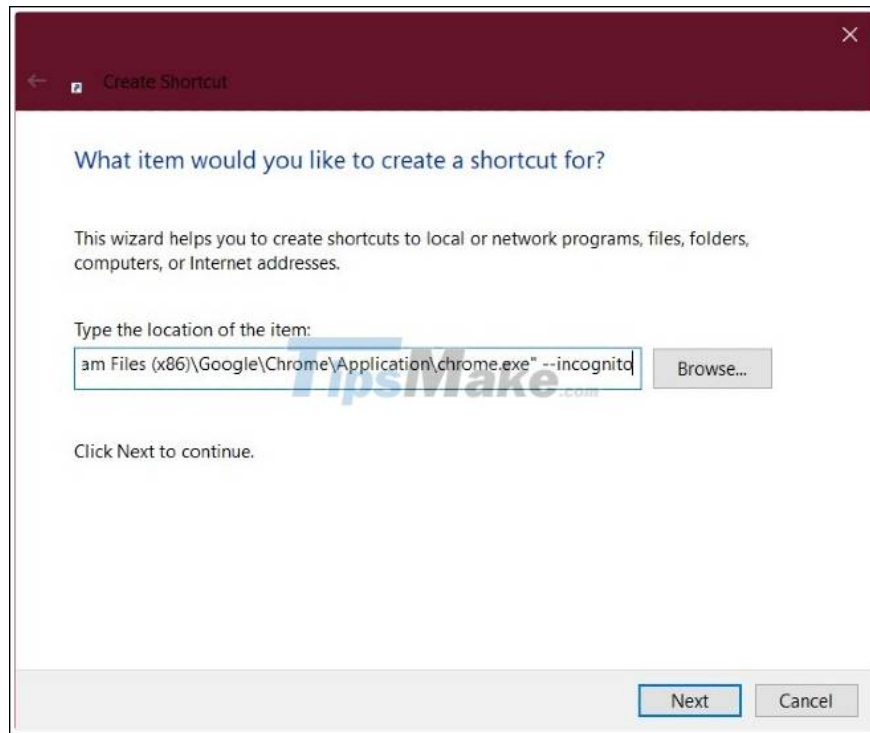
This simple tutorial by make tech will help you create quick incognito mode shortcuts for popular browsers. If you do not know, incognito mode does not save your browsing history, search history, cookies, passwords .

Now, let's get started on the main part of the article.

How to create a shortcut to quickly access incognito mode on Google Chrome

Follow these steps:

1. Right click on the screen
2. Select **New> Shortcut**
3. Enter the path to the run file **chrome.exe** in the **Type the location of the item box**
4. Add variables **--incognito** behind the path
5. Click **Next** to continue
6. Name the shortcut appropriately
7. Choose an icon
8. Click **OK** to save changes



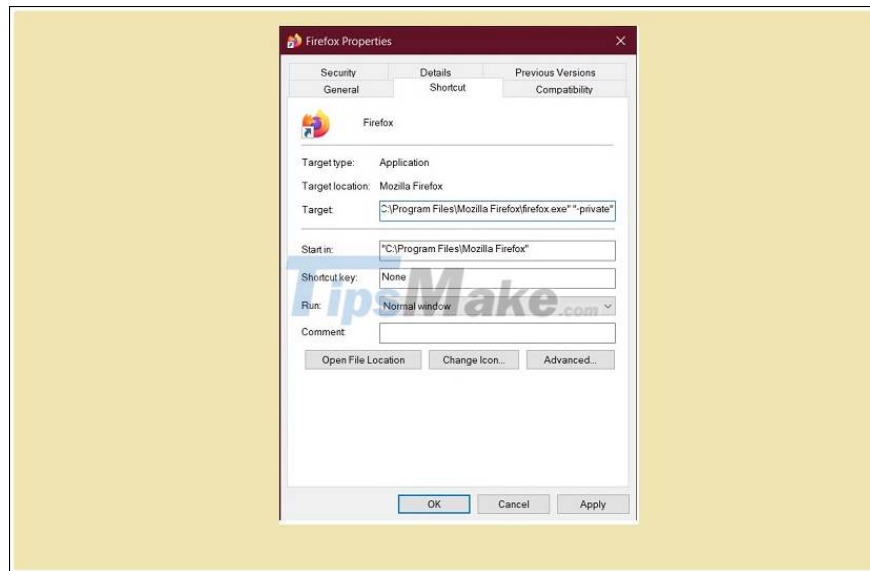
If you save your Chrome browser in the default folder, you can copy and paste the following code into the **Type the location of the item box** :

```
C:\Program Files (x86)\Google\Chrome\Application\chrome.exe" --incognito
```

How to create a shortcut to quickly access incognito mode in Mozilla Firefox

The way to do this with Firefox is slightly different from Chrome. Follow these steps:

1. Right click on the **Firefox** desktop shortcut
2. Select **Properties** to open the **Firefox Properties** window
3. Access to **Shortcut** tab
4. Add the variable "**-private**" behind the path in the **Target box**
5. Click **OK**
6. Run a browser



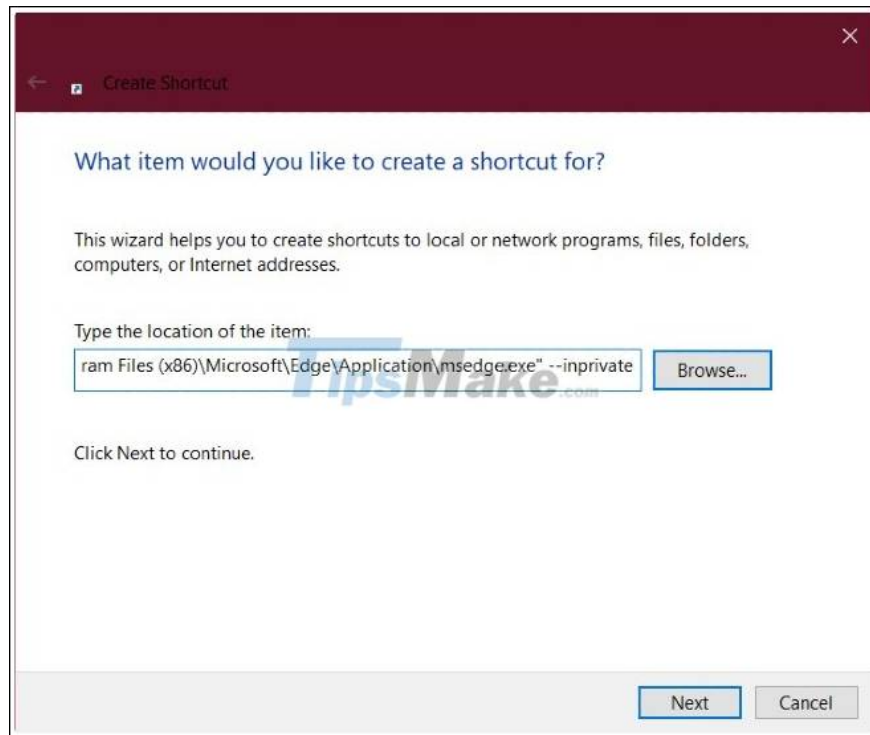
Usually the path plus the complete command in the **Target** box would be:

```
"C:\Program Files\Mozilla Firefox\firefox.exe" "-private"
```

How to create a shortcut to quickly access incognito mode on Microsoft Edge

The process with Edge is similar to that with Chrome. Follow these steps:

1. Right click on the screen
2. Select **New> Shortcut**
3. Enter the path to the run file **msedge.exe** in the **Type the location of the item** box
4. Add variables **--inprivate** behind the path
5. Click **Next** to continue
6. Name the shortcut appropriately
7. Choose an icon
8. Click **OK** to save changes



If you're using 32-bit Windows, the path might look like this:

```
"%ProgramFiles%MicrosoftEdgeApplicationmsedge.exe" -inprivate.
```

Here's the standard path for a 64-bit version of Windows:

```
"%ProgramFiles(x86)%MicrosoftEdgeApplicationmsedge.exe" -inprivate.
```

Good luck.

You finished reading the article "**How to create a shortcut to quickly access incognito mode on Chrome, Firefox and Edge**" edited by the [TipsMake](#) team. We hope this article has provided you with many useful tech tips and tricks. You can search for similar articles on tips and guides. Thank you for reading and for following us regularly.