

# How to create a shadow effect on PowerPoint

PowerPoint shadow effects can create images or text, adding art to the subject.

Adding effects to objects on PowerPoint slides also brings professionalism for slides, increased attention to viewers, or simply creates art for slides. PowerPoint has built-in effects for images, effects for text or any objects displayed on PowerPoint slides. There are many different types of effects for us to choose to apply to the object. The following article will show you how to create object shading on PowerPoint slides.

1. How to create text effects in PowerPoint
2. How to create motion effects on PowerPoint
3. How to make PowerPoint fireworks effect

## Instructions for inserting shadow effects on PowerPoint

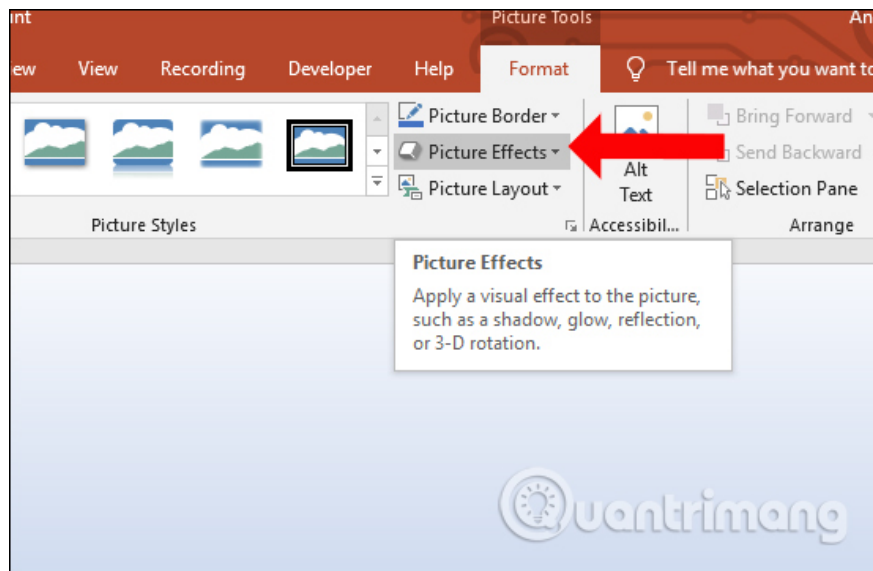
### Step 1:

Users insert images into PowerPoint slides as usual.

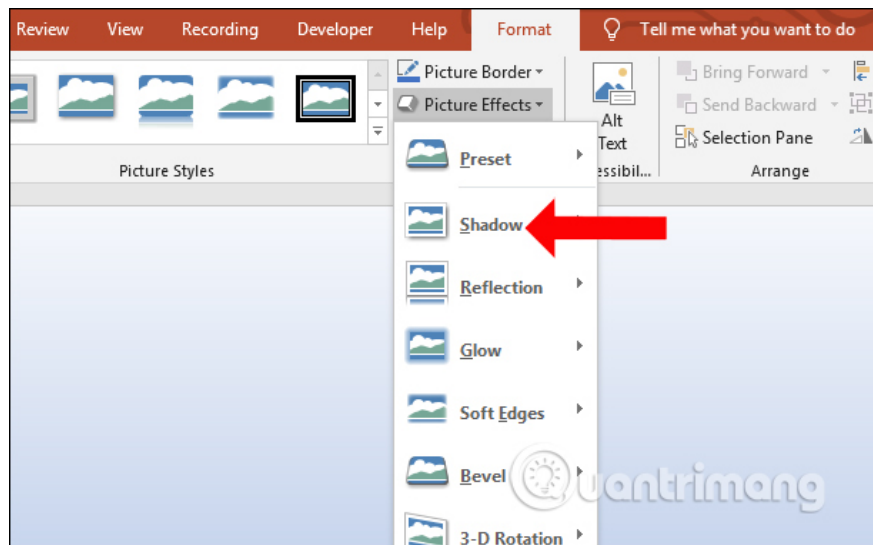


### Step 2:

Click on the image and then click on the **Format tab** above to display the tools for editing images. Here the user clicks on **Picture Effects** .

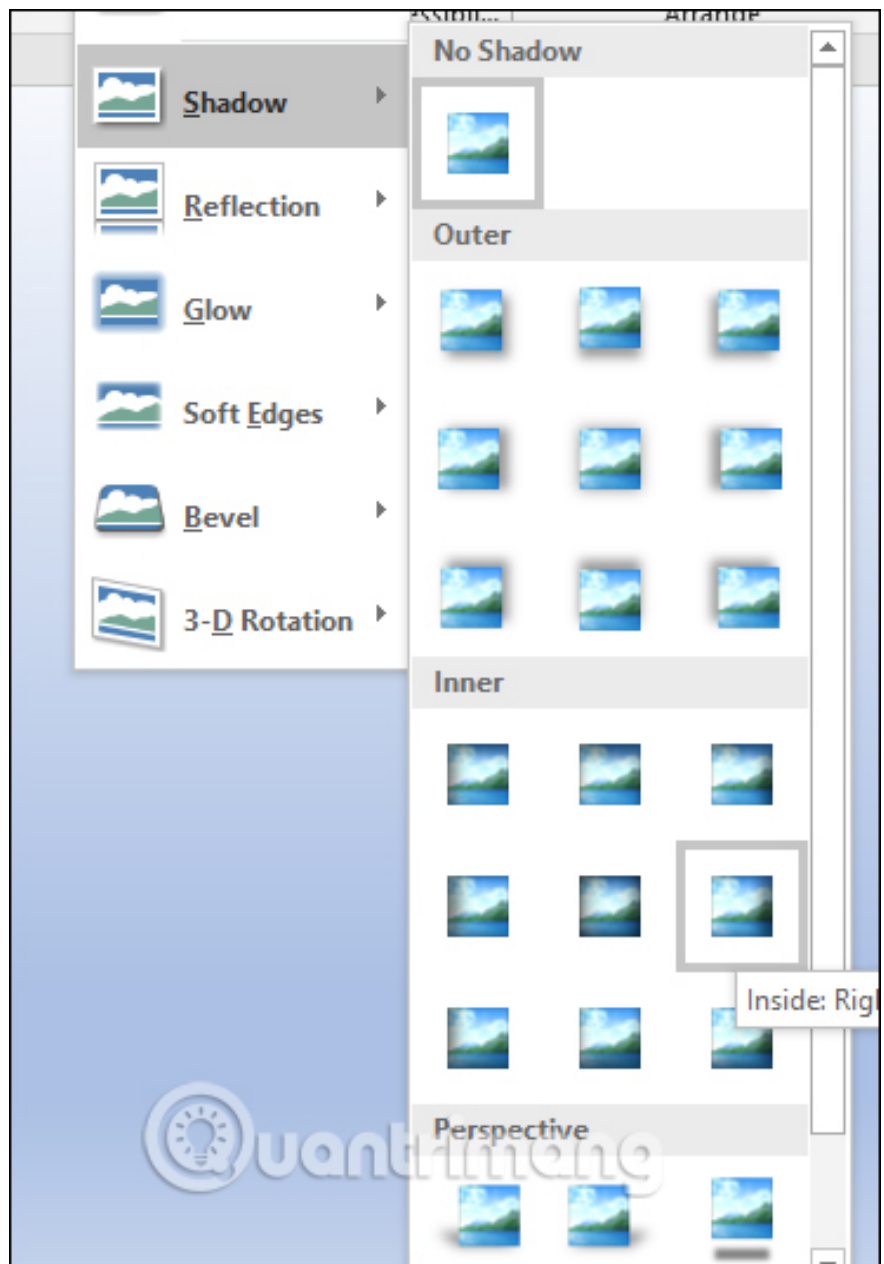


In the list of user effects type click on **Shadow type** to style the shadow effect for images on PowerPoint slides.



### Step 3:

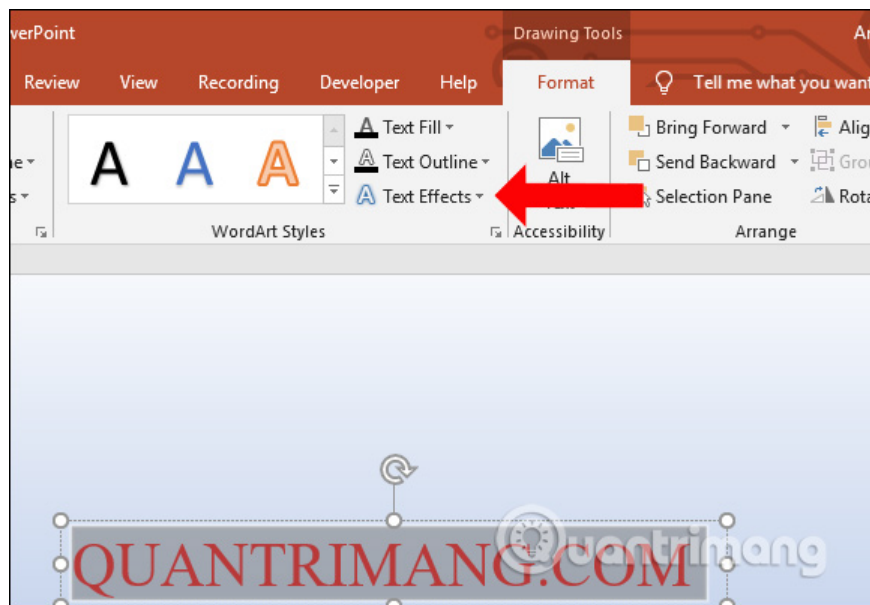
In the list of drop shadow types right after, users hover on each type to choose the appropriate type of shadow for the image. As soon as you hover over any type of effect, the image will be applied for you to preview.



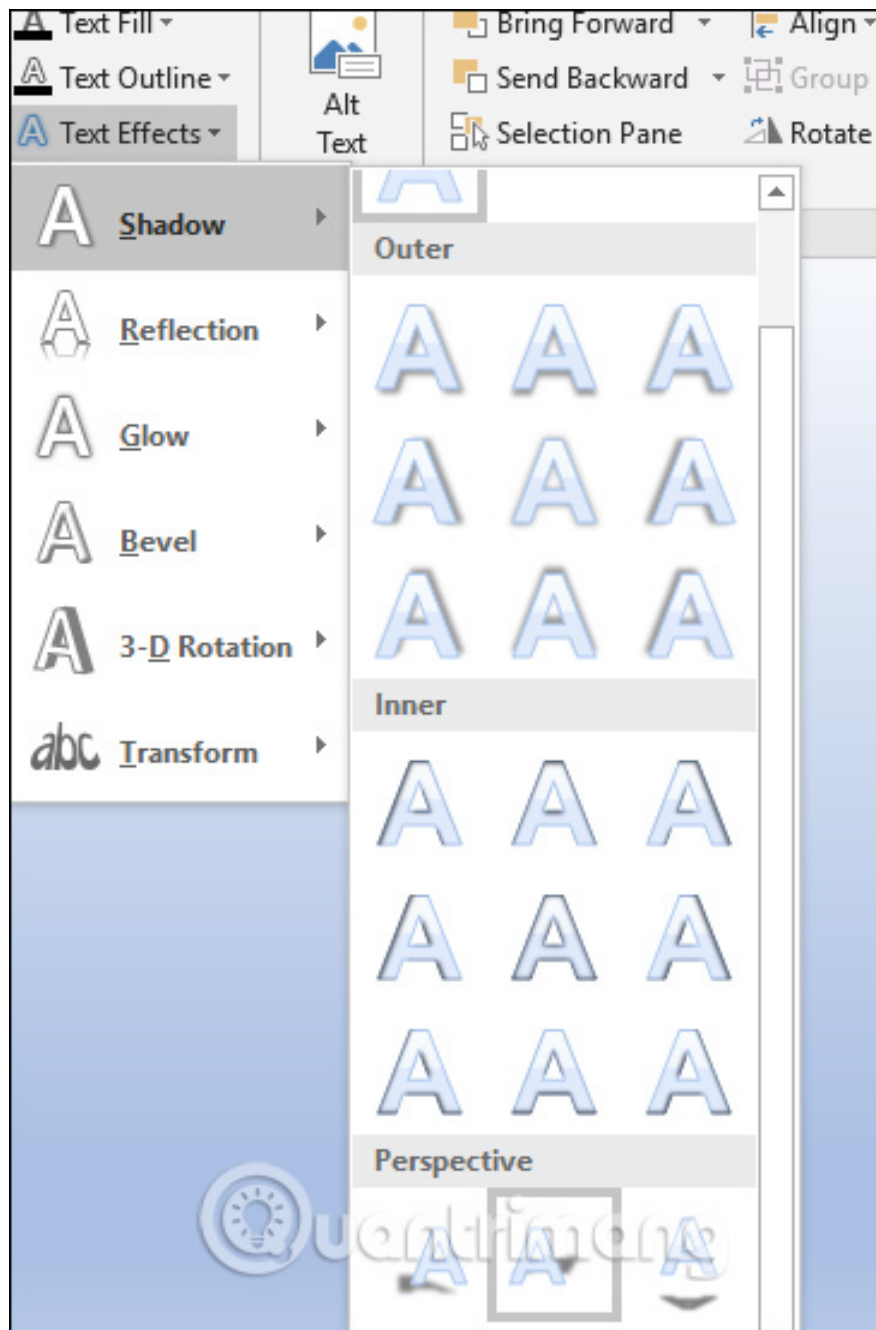
The result is visualized with the shadow type as shown below.



We can also try the shadow effect with text content. First enter the content on the slide and click on the Format tab, click on **Text Effects** .



Also click on the Shadow shadow effect and choose the type of effect you want to use.

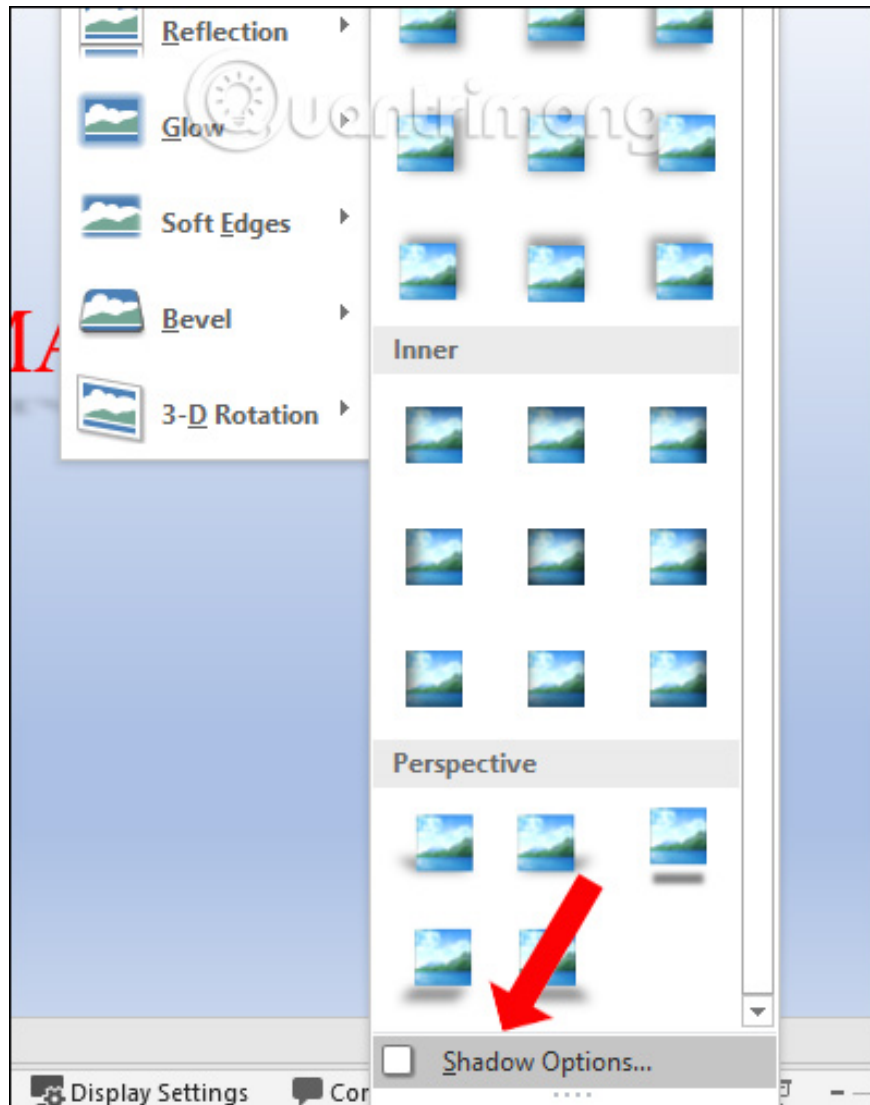


As a result we will have a shadow effect for the text as shown below.



**Step 4:**

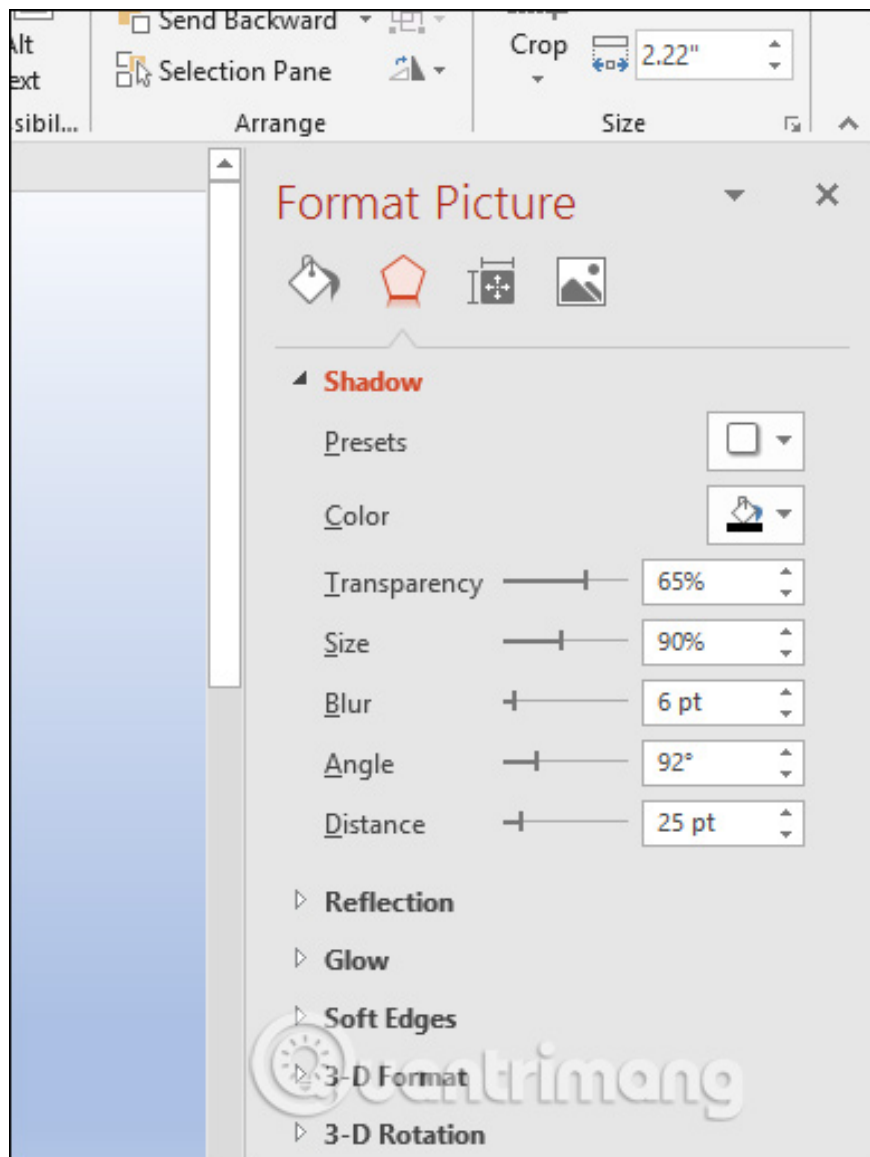
In the effect there is also a custom section, click on **Shadow Options** .



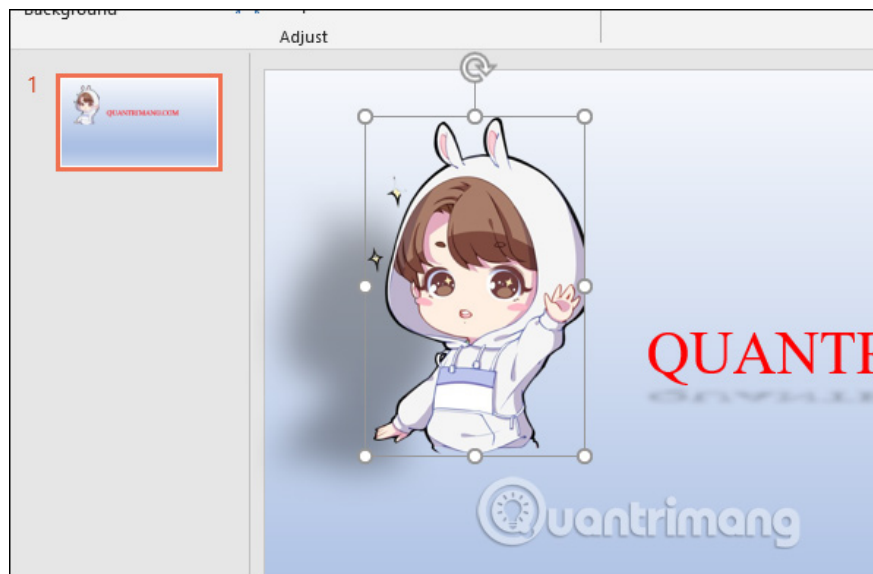
### Step 5:

Display the Format Picture interface right away to customize the shadow effect for the image.

1. Presets: adjust the shadow style for the image.
2. Transparency: adjust the blur level of the object shadow.
3. Size: size for shadow.
4. Blur: degree of blurring area for shadow.
5. Angle: angle of shadow over the subject.
6. Distance: distance between shadow and image.

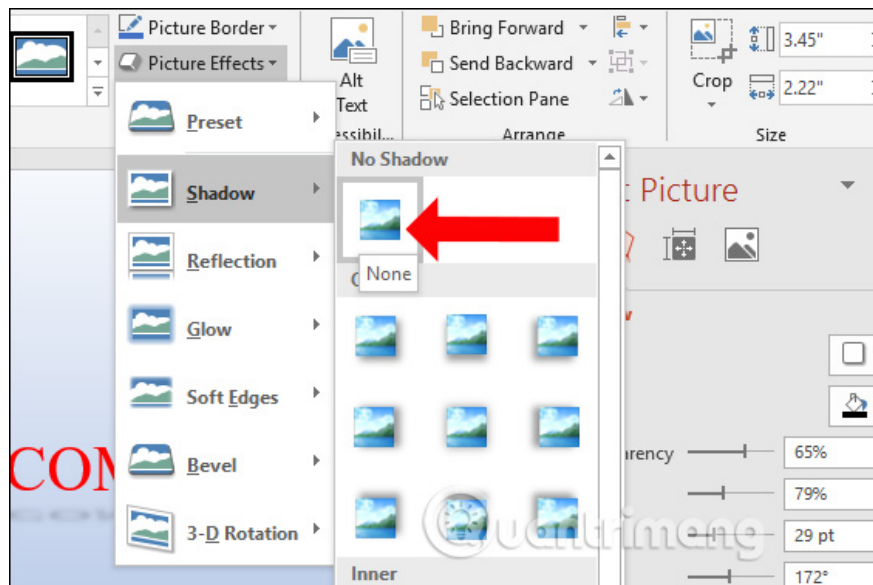


For example, adjust the type of shadow to move to the side as shown below. For other text or image objects, adjust the above as well.



### Step 6:

To remove the shadow effect from the object, click on the object and then select **the Shadow effect** , click **No Shadow** to cancel the effect.



The image will then be removed from the shadow effect.



Depending on the object, the user selects the type of shadow effect accordingly. You can also change some elements such as blurring, shadow size, and shadow color if you want to highlight that object on a PowerPoint slide.

See more:

1. How to create artwork on PowerPoint
2. How to insert text into images in PowerPoint
3. Instructions for creating charts on PowerPoint

I wish you all success!

You finished reading the article "**How to create a shadow effect on PowerPoint**" edited by the [TipsMake](#) team. We hope this article has provided you with many useful tech tips and tricks. You can search for similar articles on tips and guides. Thank you for reading and for following us regularly.