

How to create a Roadmap in PowerPoint

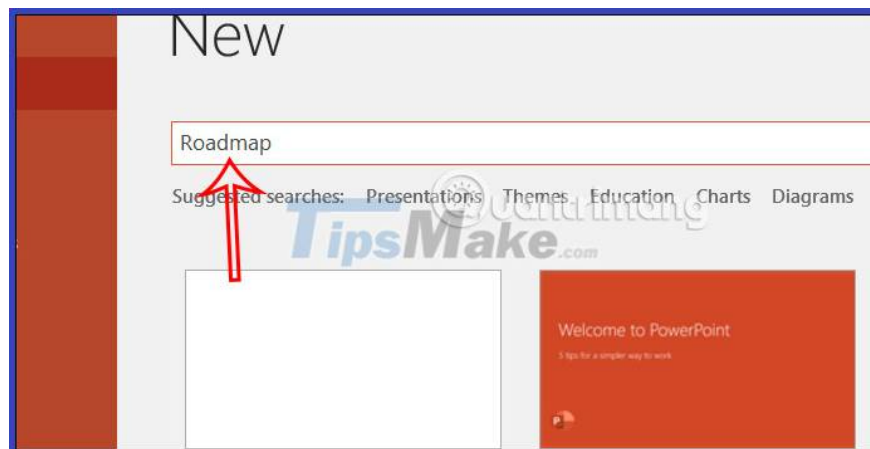
Roadmap maps in PowerPoint often appear in project content, goals or tasks that need to be done according to a clear and specific route.

Through this Roadmap, viewers can easily follow the progress at each stage in the PowerPoint map. This type of Roadmap map in PowerPoint can be created through a template, or through the SmartArt tool. The following article will guide you to create a Roadmap map in PowerPoint.

Instructions for creating a Roadmap map in PowerPoint

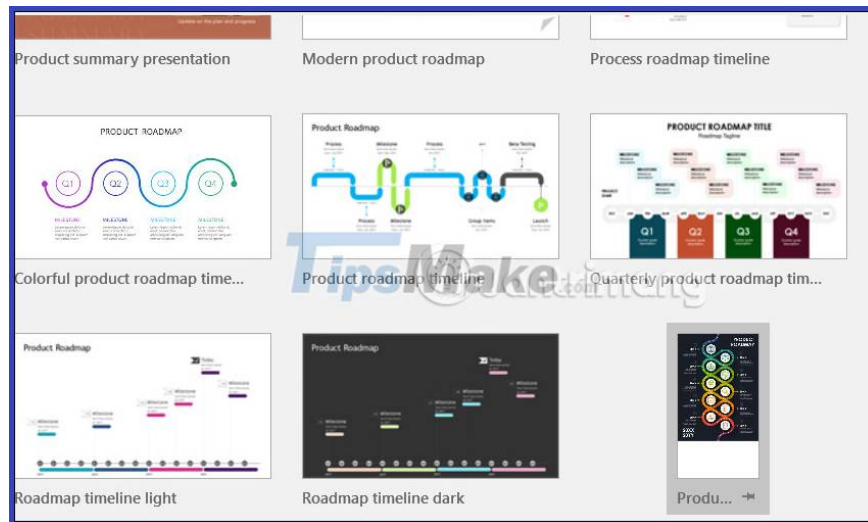
Step 1:

At the interface on the PowerPoint application, in the New section, click the search bar on the interface. Now we enter Roadmap to find the Roadmap template on PowerPoint. Then we press Enter to conduct the search for the template.

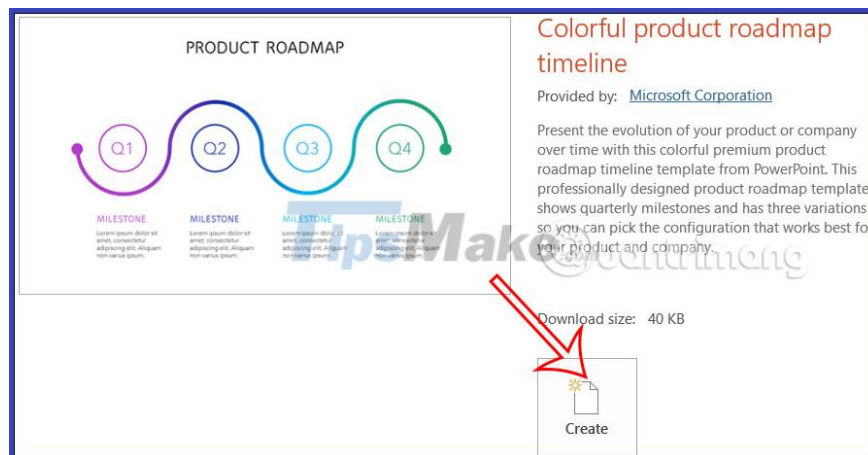


Step 2:

Soon you will see a number of Roadmap map templates for them to choose to use.



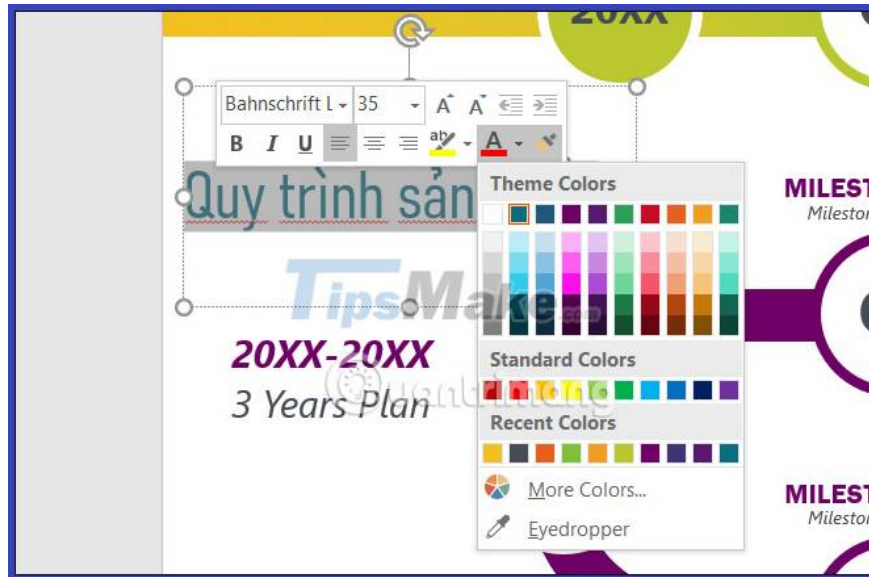
Which Roadmap template you want to use, click on it and then click Create to insert it into the content slide on the Roadmap.



Step 3:

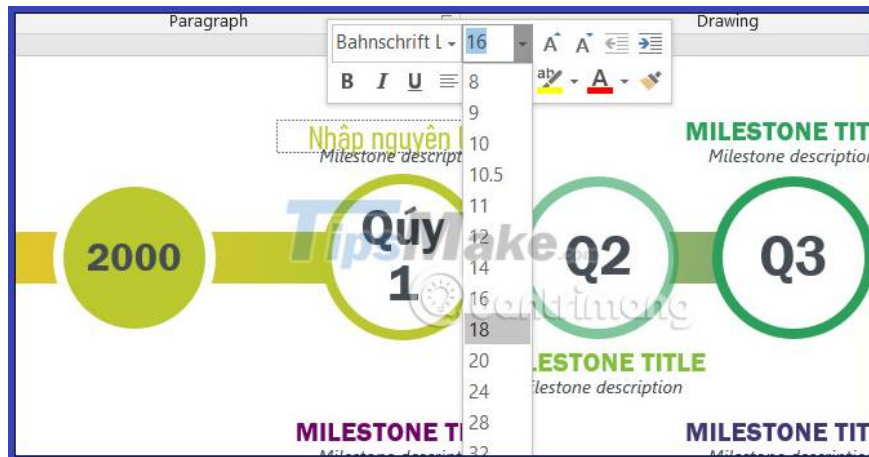
The PowerPoint map template immediately shows up in the slide. You proceed to change the content as well as the interface of the map. First you need to change the name for this map.

At the Product roadmap title, the user enters a name for this map. Then we also adjust the font, font color, font size for the title if desired.



Step 4:

Continue to adjust to each landmark, each stage in the map. You will enter content for each stage in the Roadmap process chain.

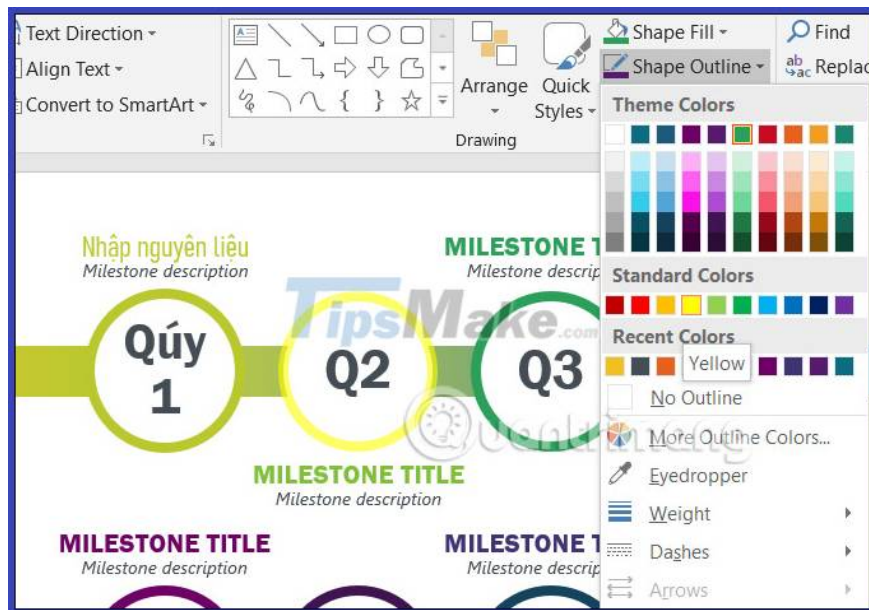


Step 5:

To change the color for each milestone, we will adjust at the Shape Fill and Shape Outline options. If it is a circle or closed shape, click on Shape Fill to change the color.



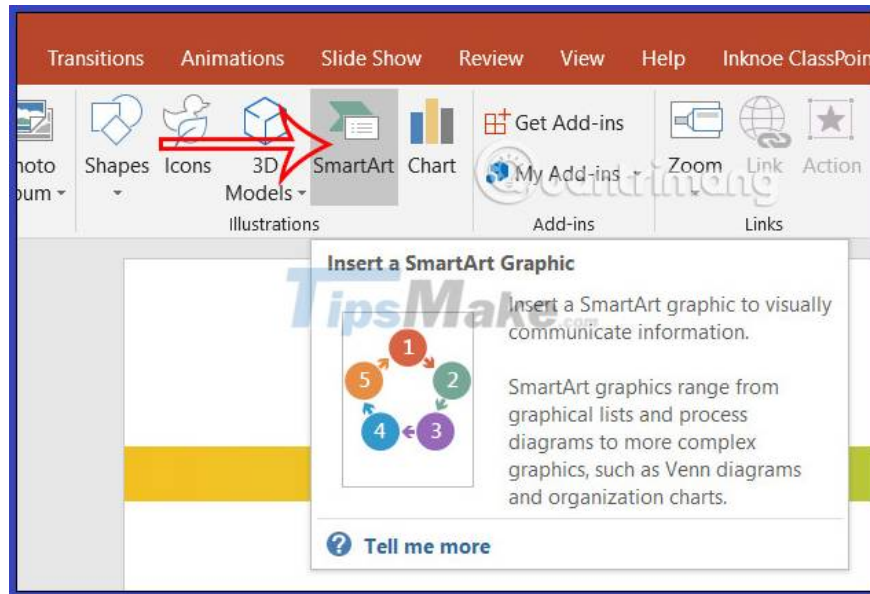
If it is a circle, click on Shape Outline to change the color again.



Instructions to create PowerPoint Roadmap via SmartArt

Step 1:

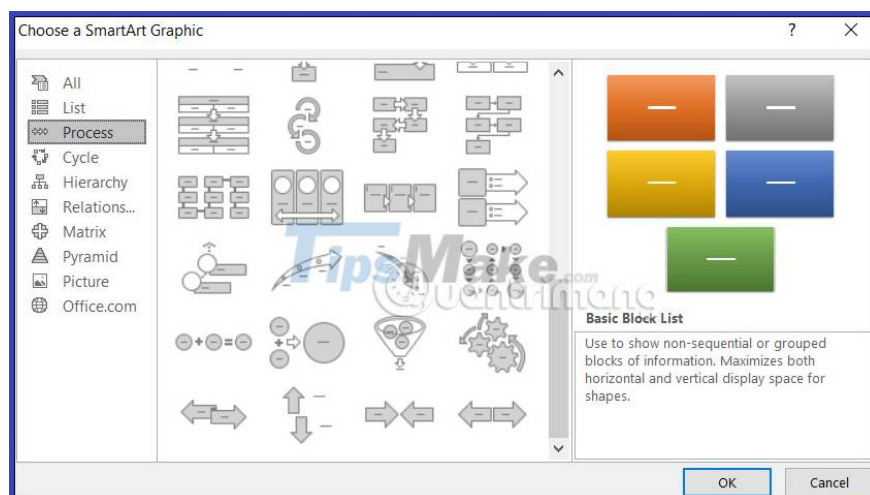
At the interface on PowerPoint, we click on the Insert item and then select SmartArt to proceed with inserting the chart.



Step 2:

Switching to the new interface, users click on the Process type to find the process chart type. Here you click on the flow chart type you want to use.

For more detailed tracking, please refer to the article [How to create a Timeline chart in PowerPoint](#).



You finished reading the article "[How to create a Roadmap in PowerPoint](#)" edited by the [TipsMake](#) team. We hope this article has provided you with many useful tech tips and tricks. You can search for similar articles on

tips and guides. Thank you for reading and for following us regularly.
