

# How to create a password protection for Excel sheets

In addition to creating passwords for Excel files, we can proceed to set the password for each sheet in Excel data to prevent the ability to edit the sheet content, but can still view the content.

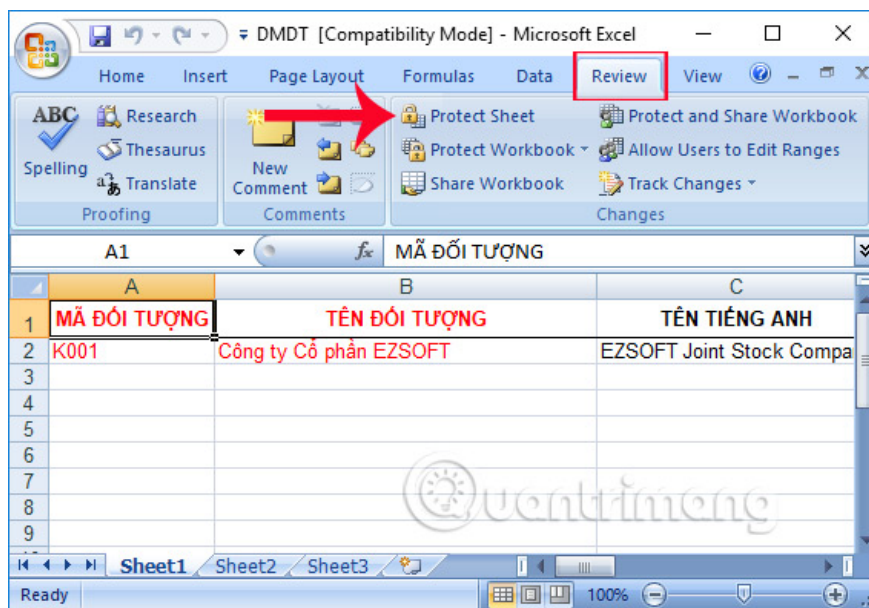
In addition to creating passwords for Excel files, preventing file opening, we can also create passwords for sheets in the data sheet. When setting a password, the sheets will be locked and prevent others from editing the content illegally. Editing on the sheet will not work, but the content in each sheet is still trackable. Readers can track how to lock sheet in Excel in the article below.

1. MS Excel - Lesson 4: Working with lines, columns, sheets
2. How to temporarily hide rows and columns in Excel 2013
3. Change color between different lines in Microsoft Excel

## How to create a password for a sheet in Excel

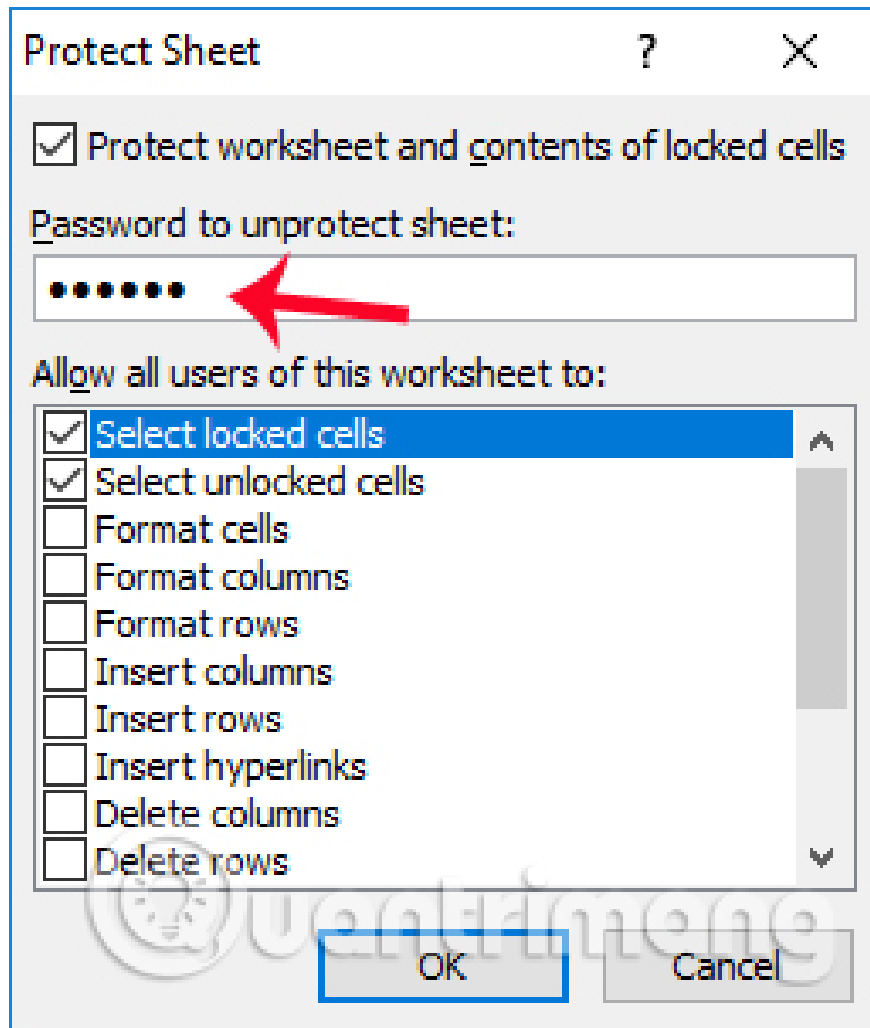
### Step 1:

We open the Exce file and the data sheet wants to create a secure password. In that sheet, click the **Review** tab on the Ribbon and then select the **Protect Sheet** .



### Step 2:

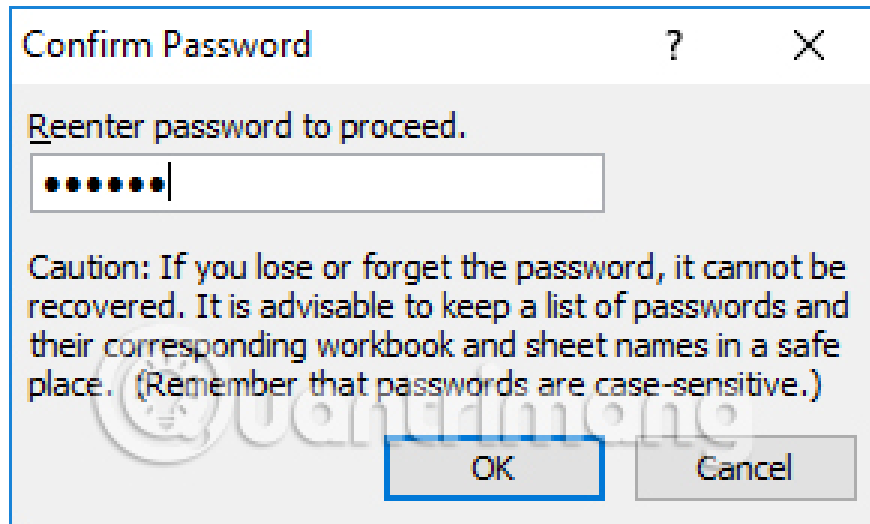
A small dialog box appears. At this point, the user **enters the password that you** want to place the sheet in the **Password to unprotect sheet** . Then click **OK** to save.



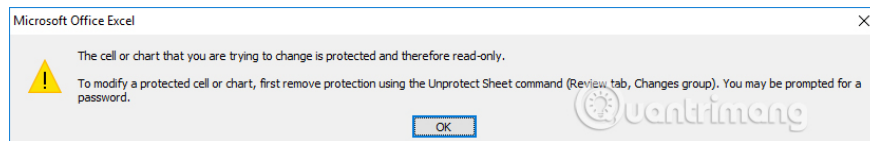
### Step 3:

Soon the **Confirm Password** dialog box appears. We need to enter the correct password created in **Reenter password to proceed** frame. If you forget or enter the wrong password, it cannot be restored.

Finally click **OK** to verify.

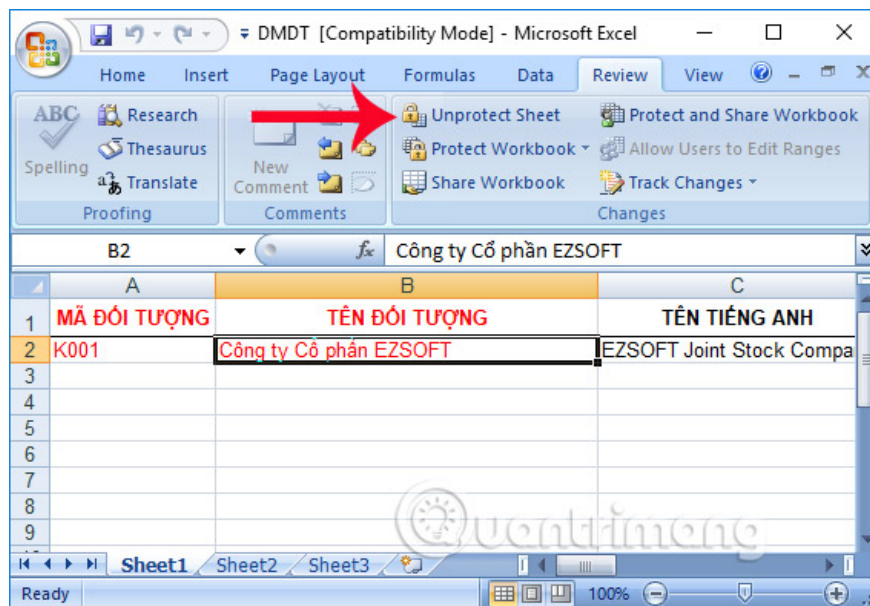


Thus, we have completed the operation of creating security passwords for sheets in Excel, locking operations to edit the content in the sheet sheet. When the other person clicks the mouse to perform the editing of the content in the sheet, a bulletin board appears as shown below.



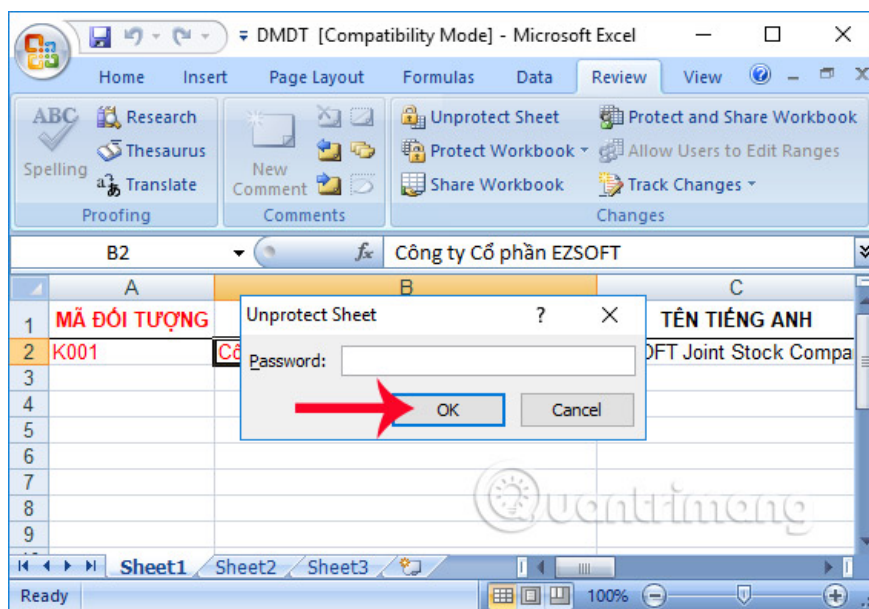
#### Step 4:

To remove the security password created for the sheet in Excel, we also click the **Review tab** and click on the **Unprotect Sheet** entry.



#### Step 5:

Enter the correct password previously set in the **Password** box, then click **OK** to confirm. Thus users can remove the password for the sheet in Excel.



By setting the password for the sheet in Excel, you can restrict the manipulation of content by notification, as soon as you click on that sheet in Excel. If you want the content on the sheet to be trackable, but don't want to be edited illegally, we can create an Excel sheet password according to the above article.

## Video tutorial to create password for sheet on Excel

I wish you all success!

You finished reading the article "**How to create a password protection for Excel sheets**" edited by the [TipsMake](#) team. We hope this article has provided you with many useful tech tips and tricks. You can search for similar articles on tips and guides. Thank you for reading and for following us regularly.