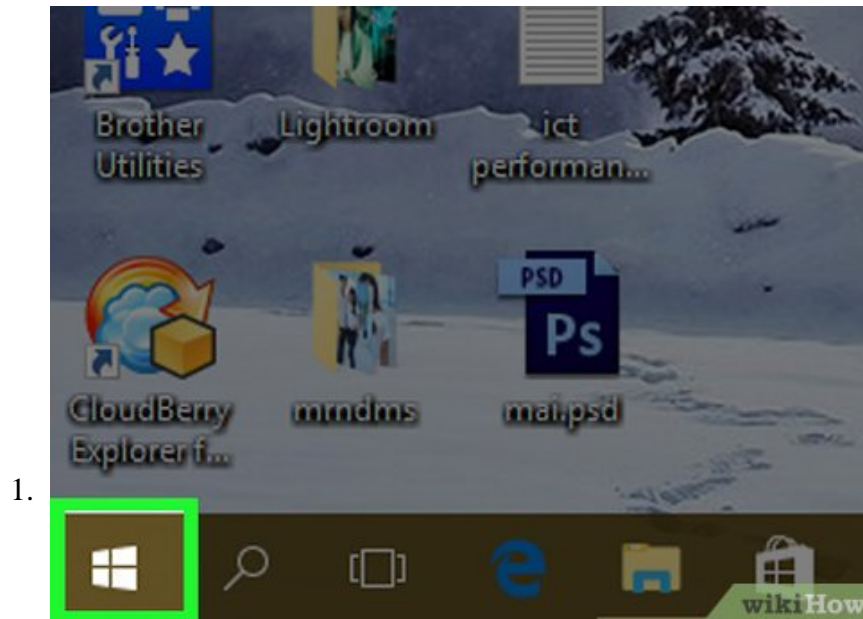


# How to Create a Partition

This wikiHow teaches you how to divide your computer's hard drive into two distinct sections (or 'partitions'). Partitioning a hard drive allows you to treat the hard drive like two separate hard drives, which is helpful when installing...

Method 1 of 2:

## On Windows

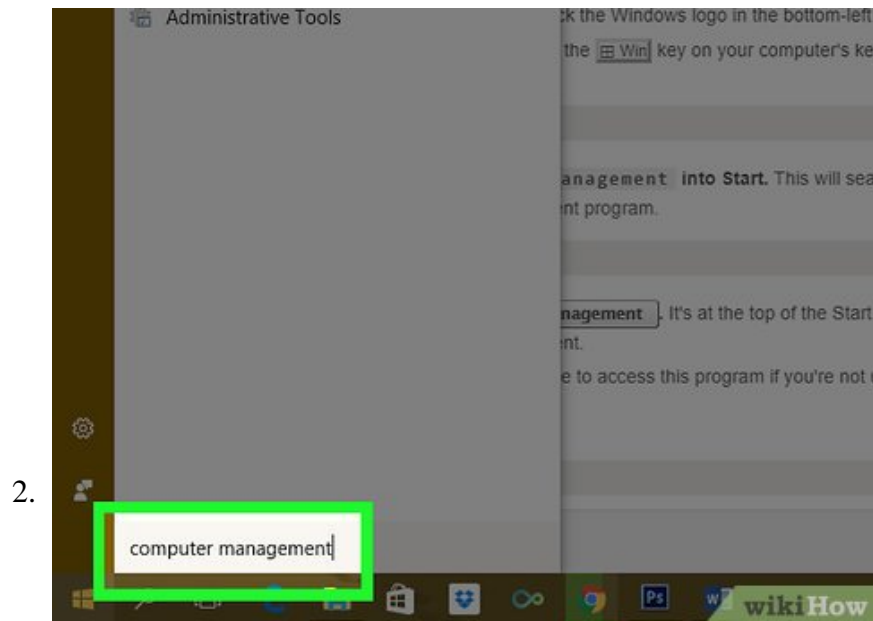


Open Start



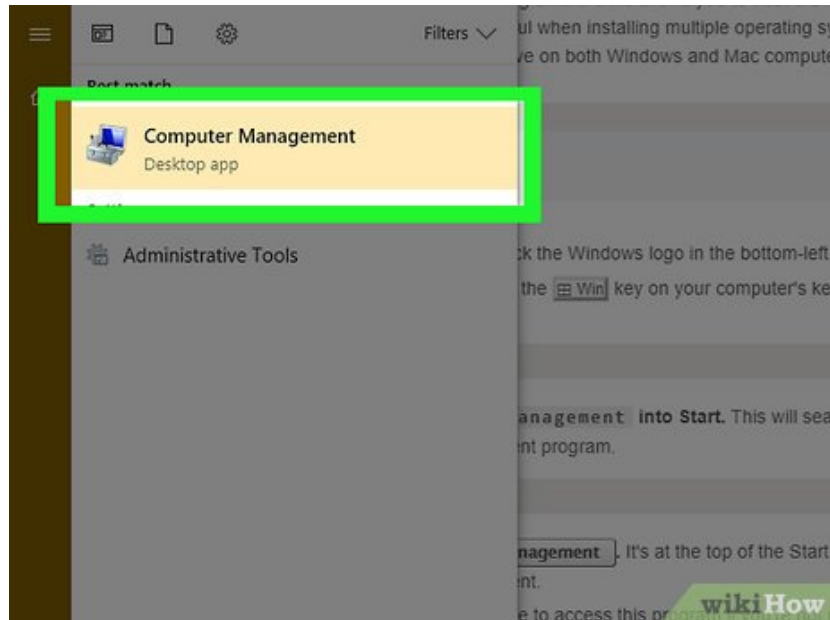
. Click the Windows logo in the bottom-left corner of the screen.

1. You can also press the **Win** key on your computer's keyboard.



**Type computer management into Start.** This will search your computer for the Computer Management program.

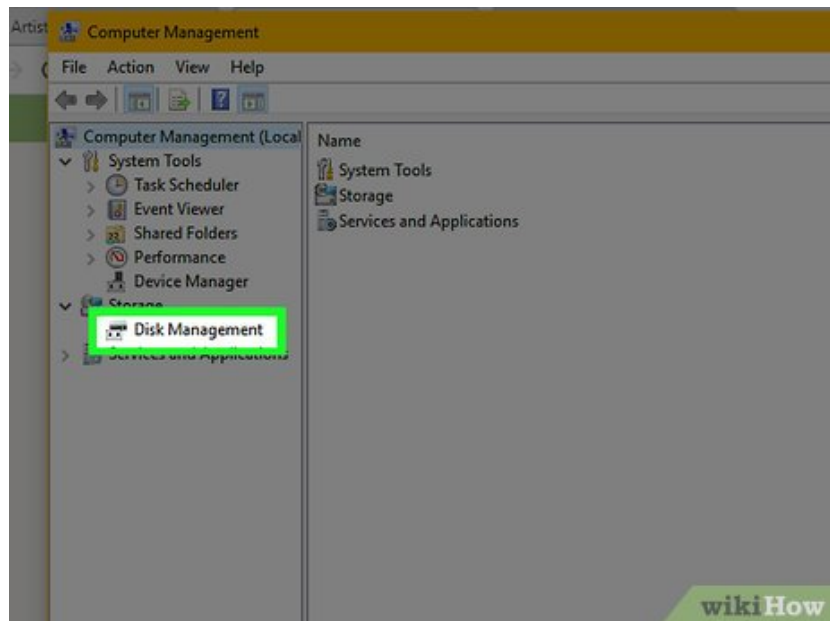
3.



Click **Computer Management**. It's at the top of the Start window. Doing so opens Computer Management.

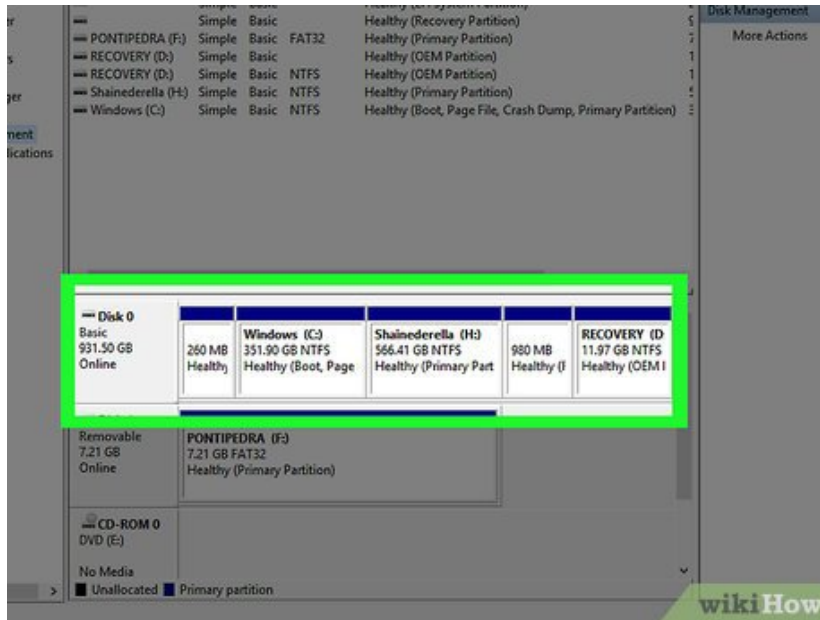
1. You may not be able to access this program if you're not using an administrator account.

4.



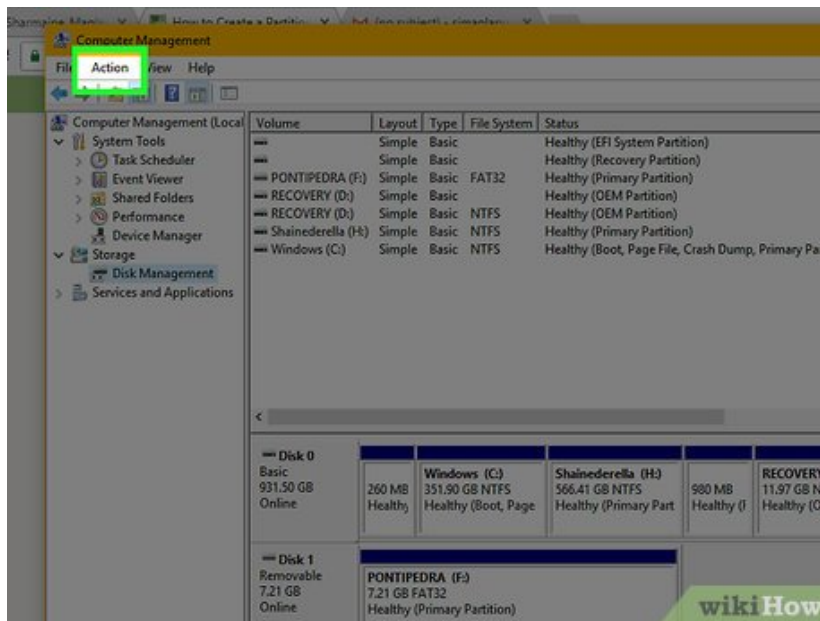
Click the **Disk Management** tab. This tab is in the sidebar on the left side of the Computer Management window.

1. If you don't see this option, first double-click **Storage**.



5.

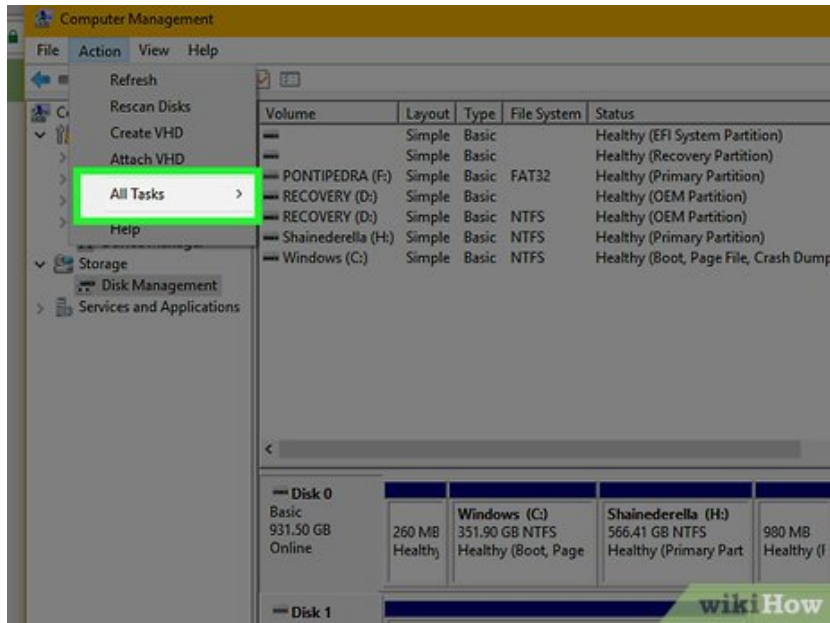
**Select your hard drive.** In the window near the bottom of Computer Management, click your hard drive's box. This box should have the hard drive's letter (e.g., "(C:)") as well as the number of gigabytes (GB) of storage available to use.



6.

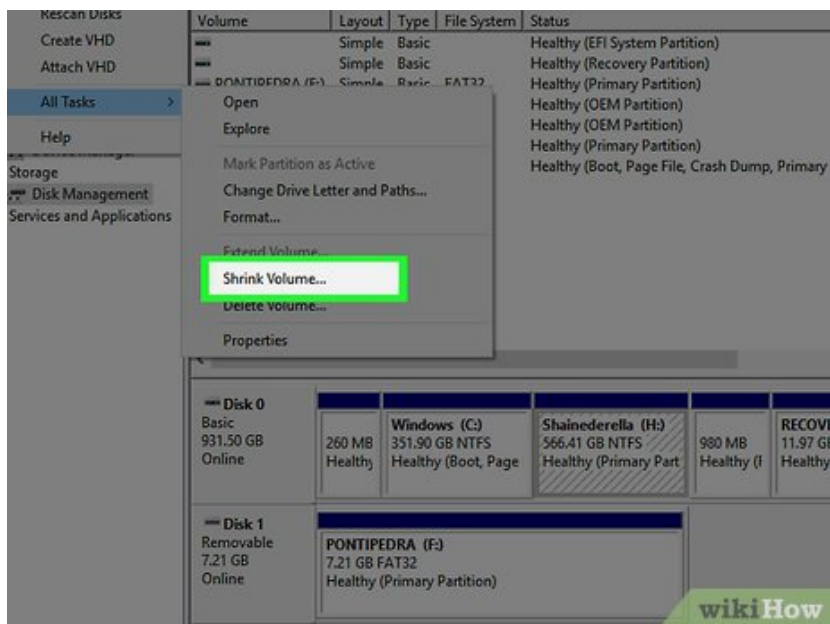
**Click Action**. It's a tab in the upper-left side of the Computer Management window. Doing so prompts a drop-down menu.

7.

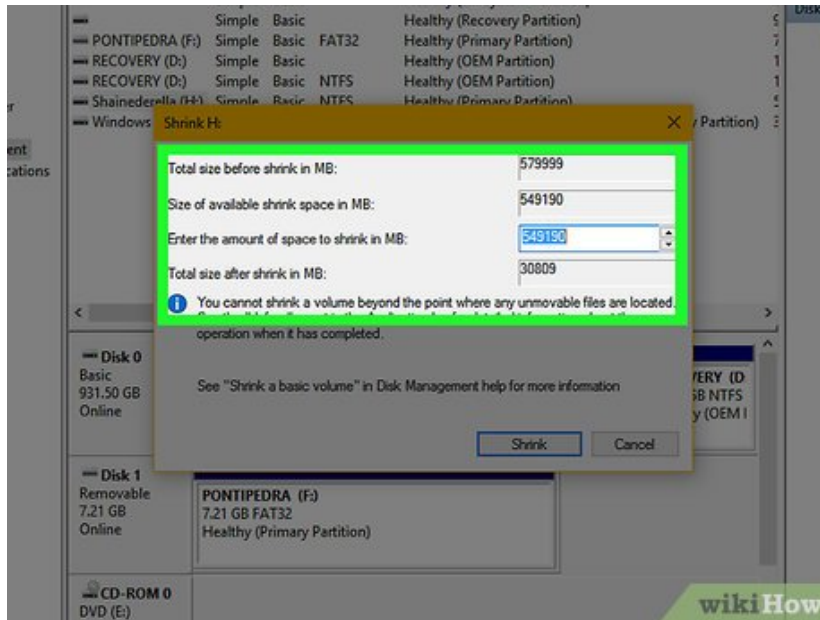


Select **All Tasks**. This option is near the bottom of the drop-down menu. Selecting it prompts a pop-out menu to appear.

8.



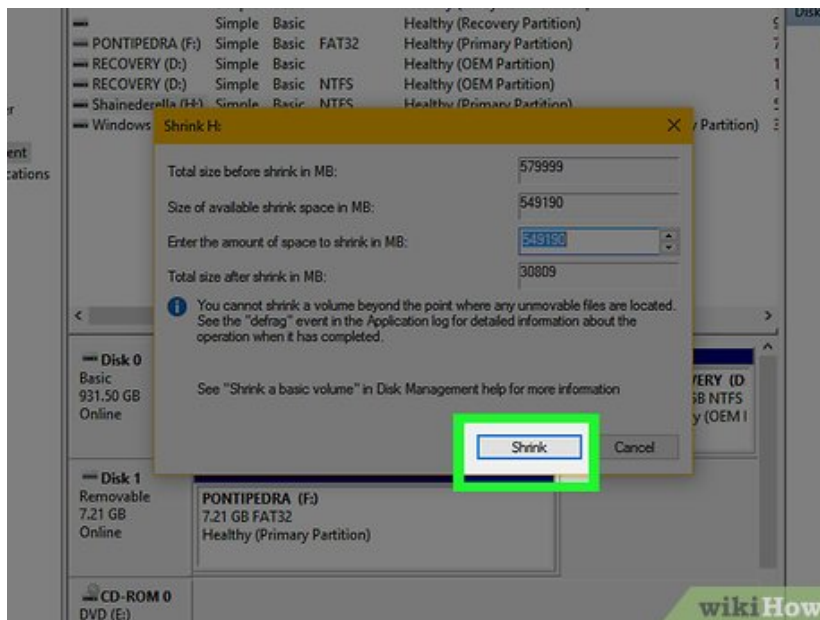
Click **Shrink Volume...**. It's in the middle of the pop-out menu. Clicking **Shrink Volume...** will prompt Windows to determine how much free space you have. When it finishes doing so, a new window will open.



9.

**Determine your partition's size in megabytes.** Type the number of megabytes that you would like your partition to be into the "Enter the amount of space to shrink in MB" text field on the right side of the page.

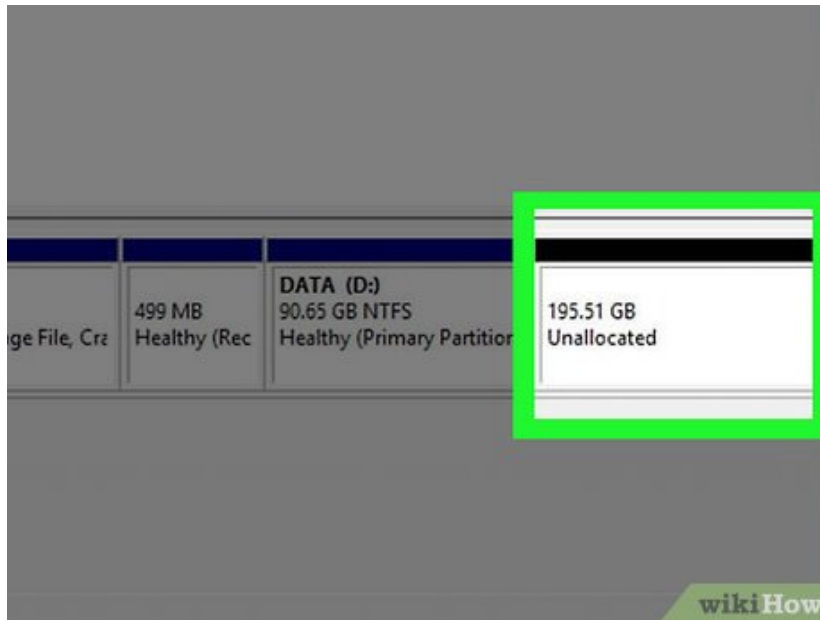
1. The maximum number of megabytes that you can allocate is listed directly above the field that you type in.
2. There are 1000 megabytes (MB) in one gigabyte (GB). To create a 5 GB partition, you would type `5 0 0 0` into the text field.



10.

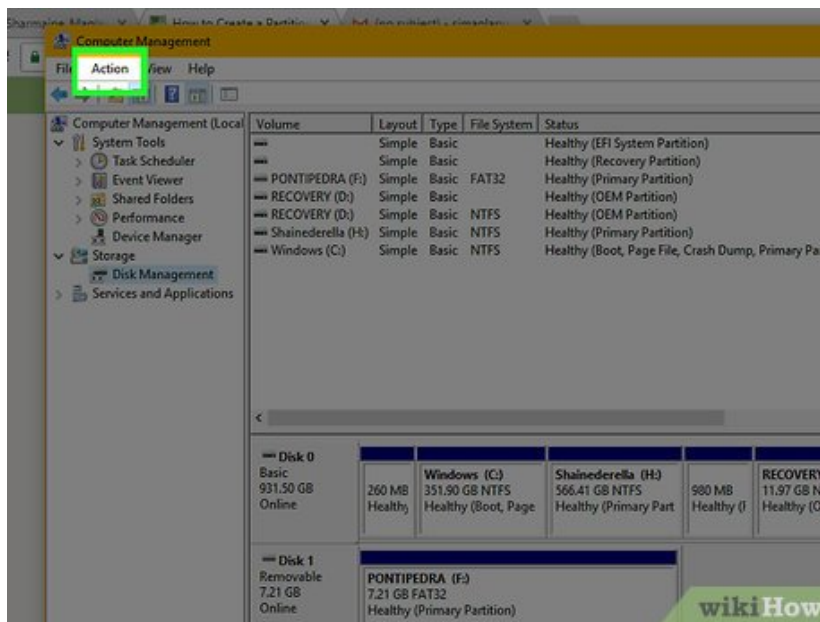
**Click `Shrink`**. It's at the bottom of the page. This will begin creating a segment of your hard drive to serve as the partition.

1. This process may take a few minutes.



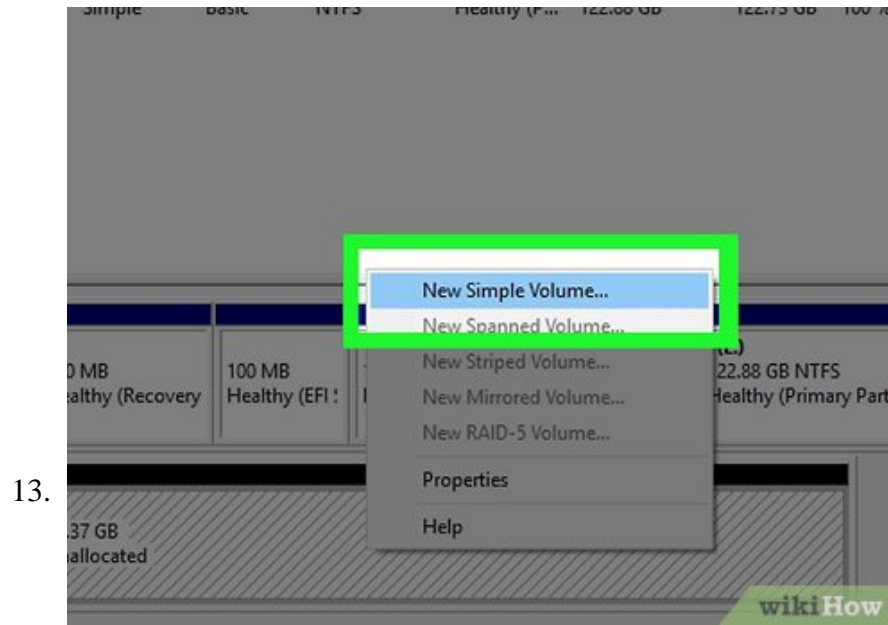
11.

**Select the new partition.** Click the new partition, which will say "Unallocated", to the right of the hard drive's space.

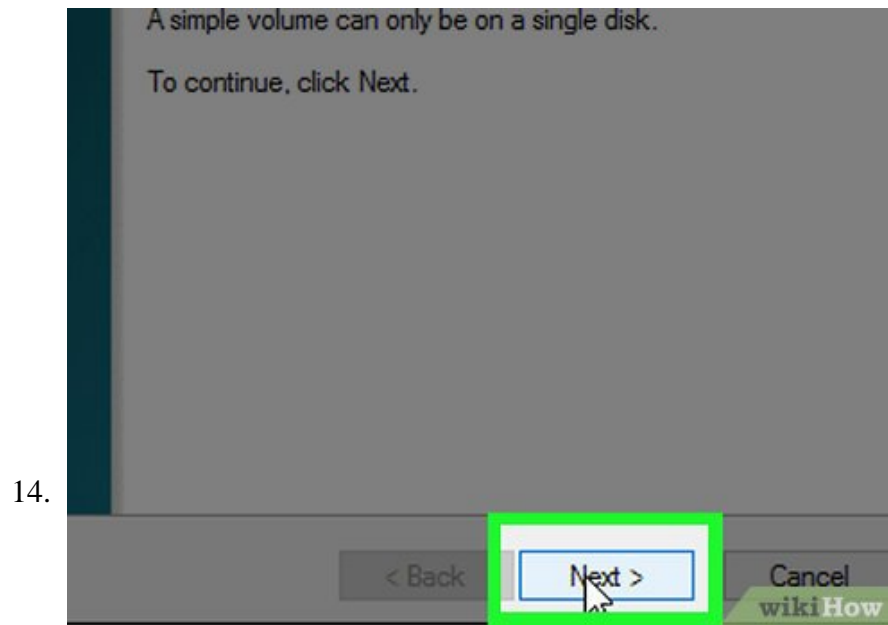


12.

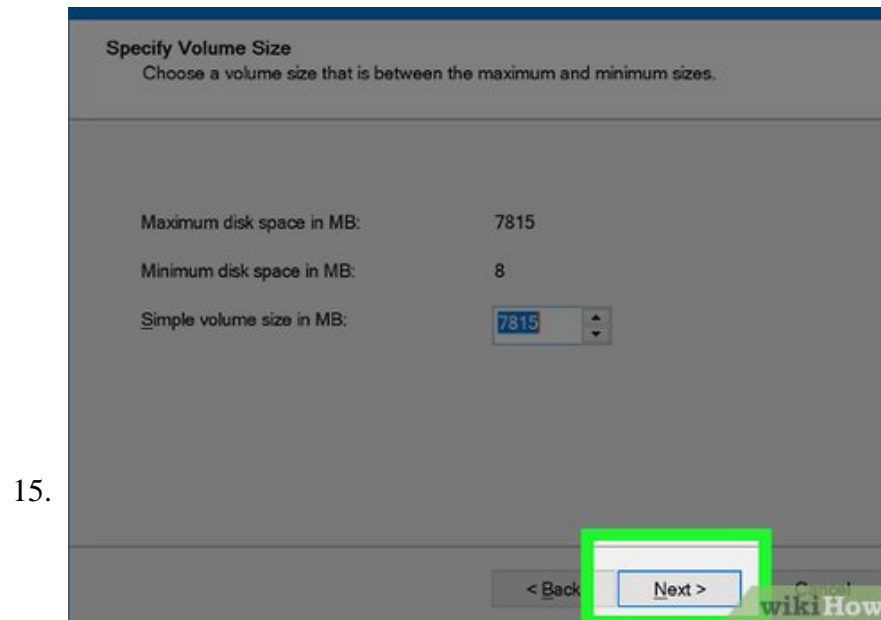
Click **Action** again. This tab is in the upper-left side of the window.



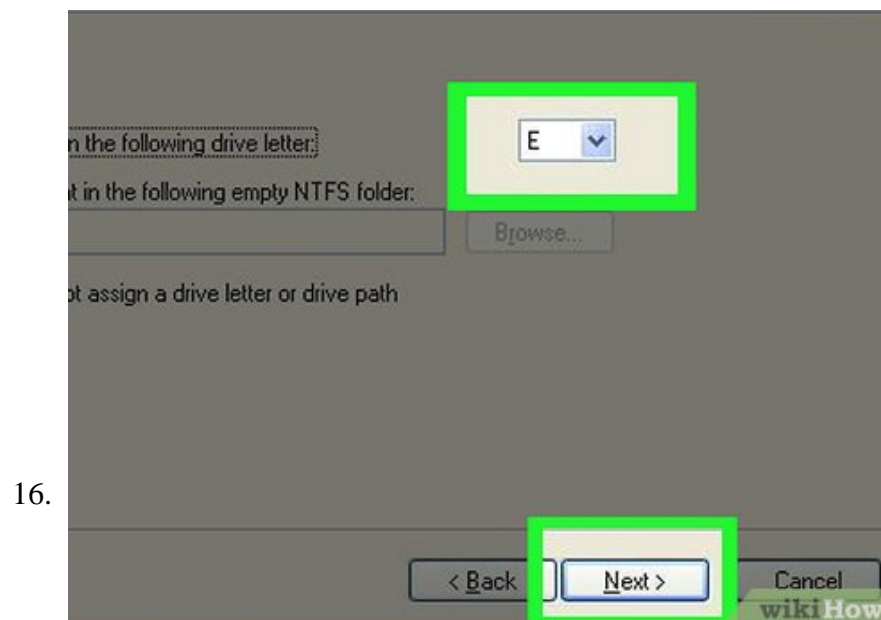
Select **All Tasks**, then click **New Simple Volume...**. It's near the top of the pop-out window.



Click **Next**. It's in the bottom-right side of the window. This will take you to the beginning of the partition setup.

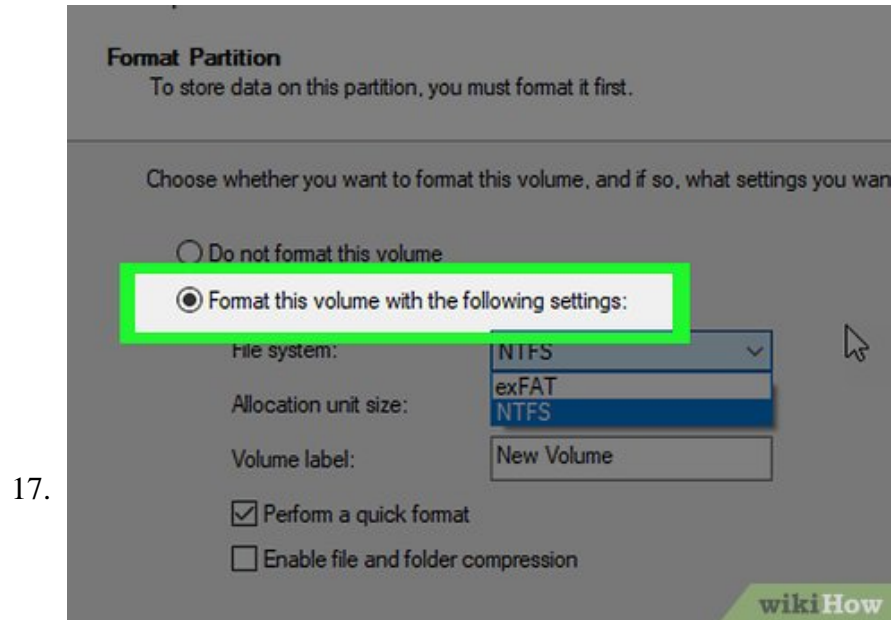


Click **Next**. Doing so will accept your partition's size and take you to the next page.



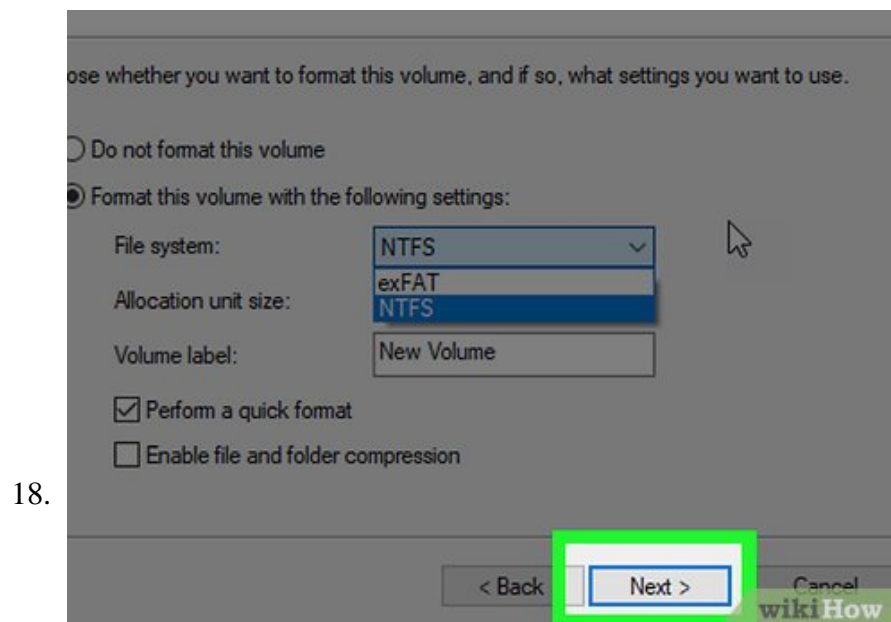
Select a drive letter, then click **Next**. You can change the partition's drive letter (e.g., "E") by clicking the drop-down box and then clicking a new letter.

1. This is an optional step.



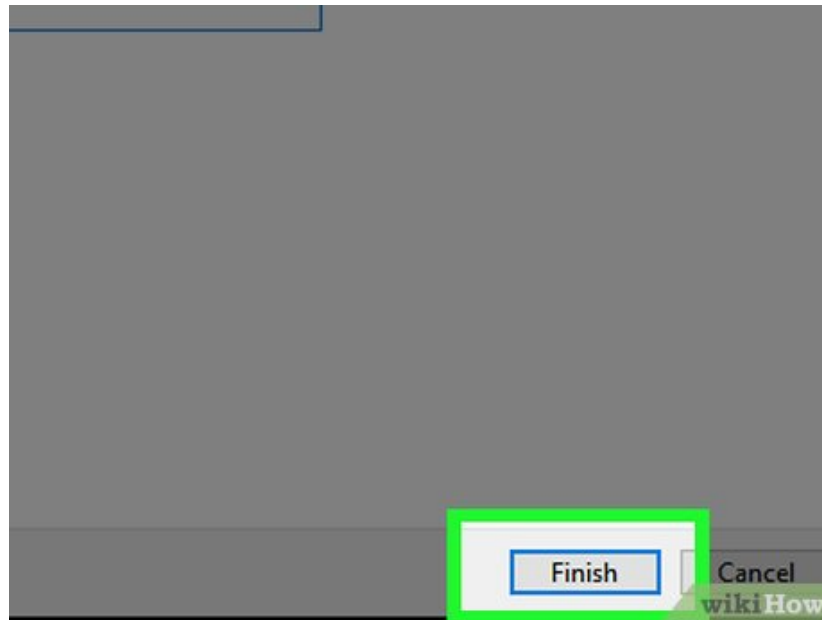
**Check the "Format this volume with the following settings" box.** It's near the top of the page. This option will set up your partition with Windows default settings, which will allow it to work with Windows like your regular hard drive.<sup>[1]</sup>

1. If the "File system" box doesn't say "NTFS", click it and then click **NTFS**. This will format your partition for Windows.
2. You can also change the partition's name in the "Volume label" box.



**Click .** It's at the bottom of the page. This will take you to the final page.

19.



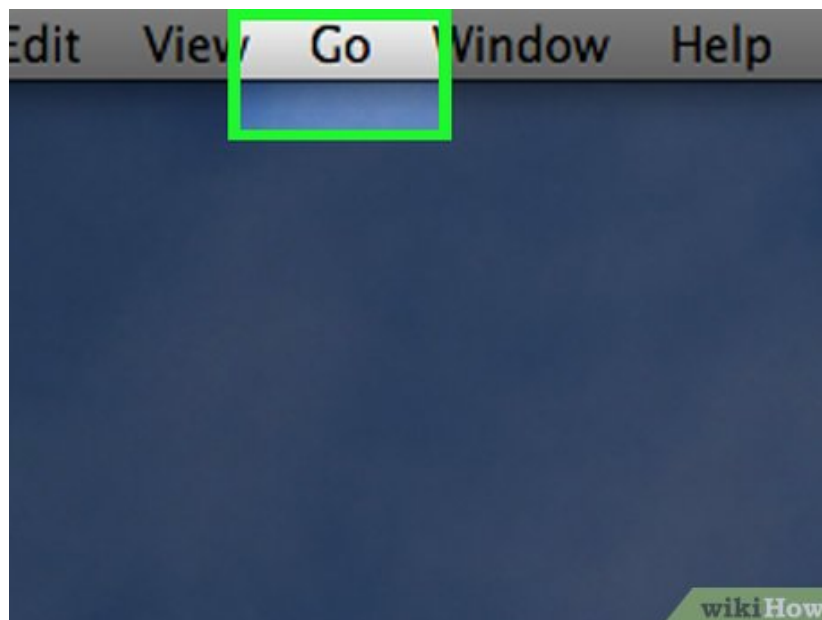
Click **Finish**. Doing so will begin partitioning your drive. Once this process completes, you will be able to interact with the partition in the This PC program; it will appear alongside your hard drive in the "Devices and drives" section.

1. Partitioning can take several minutes to several hours, depending on the size of the drive and the partition's size.

Method 2 of 2:

## On Mac

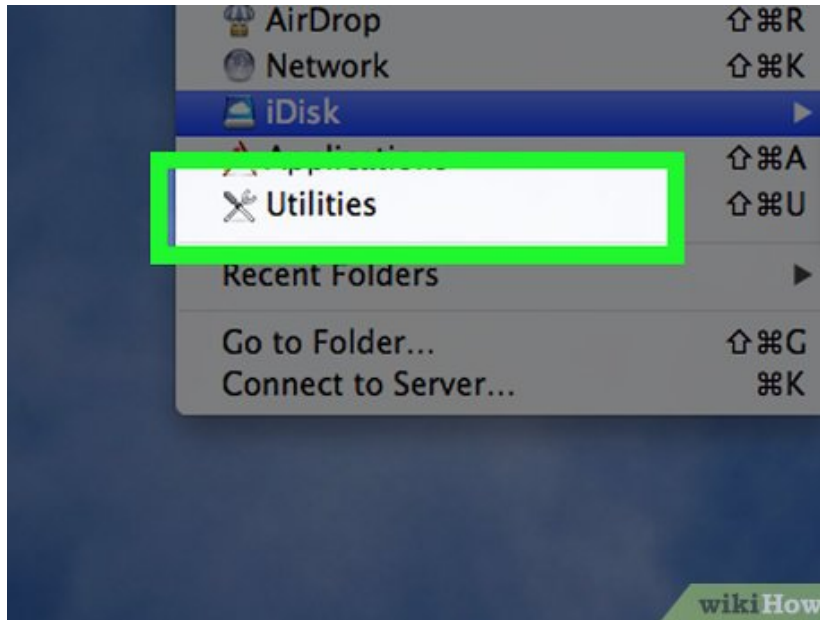
1.



Click **Go**. This tab should be in your Mac's menu bar at the top of the screen.

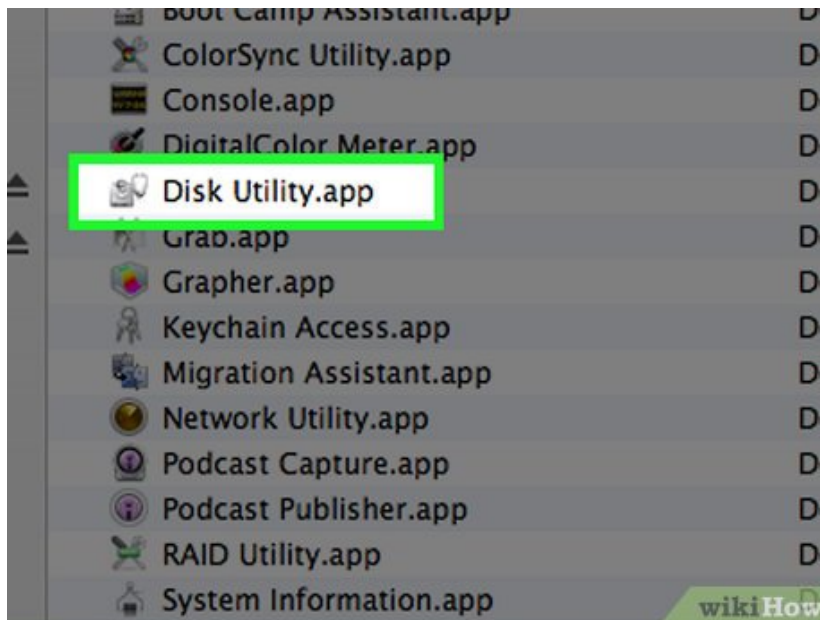
1. If you don't see **Go**, click the desktop or open a new Finder window to make it appear.

2.

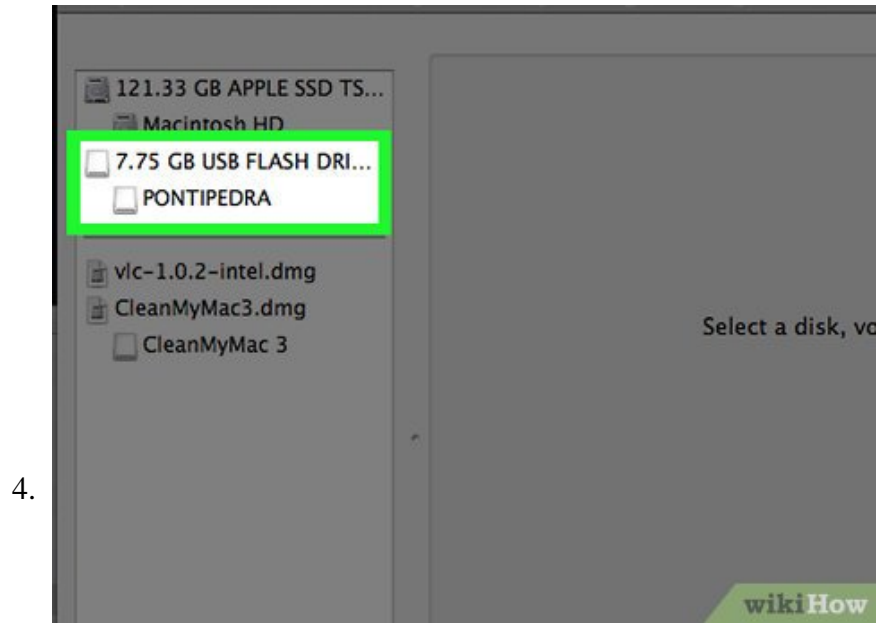


Click **Utilities**. It's at the bottom of the **Go** drop-down menu.

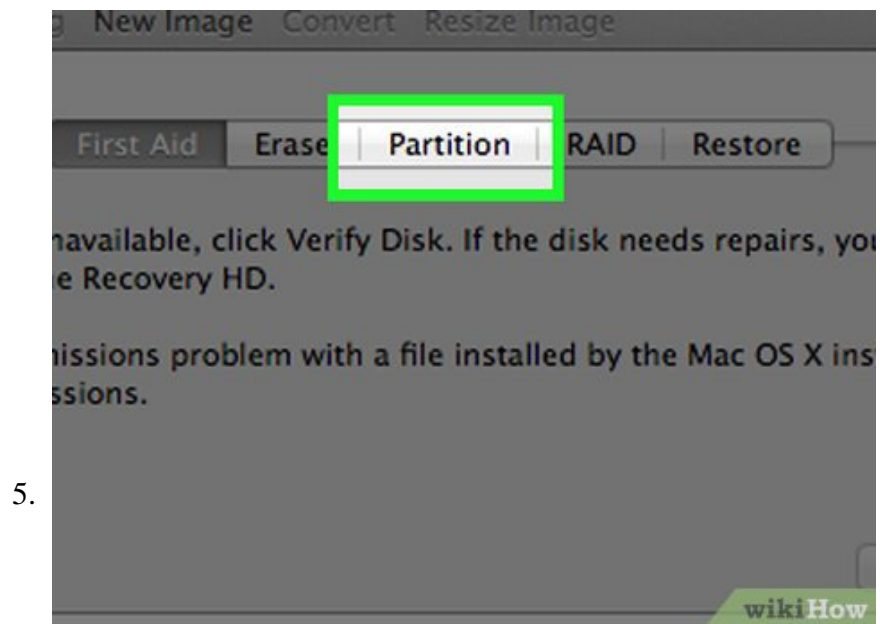
3.



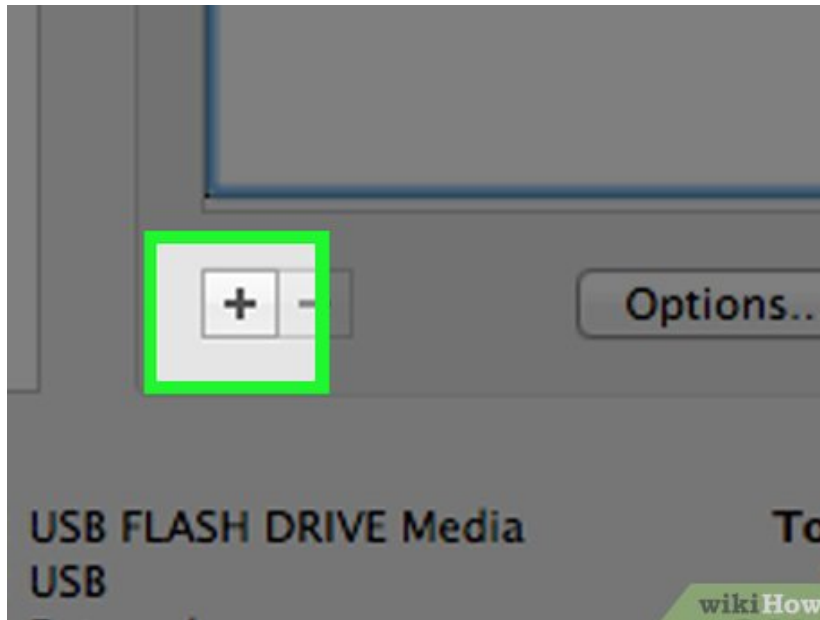
**Double-click** **Disk Utility**. This icon resembles a Mac hard drive with a stethoscope on it. Doing so will open the Disk Utility program.



**Select your hard drive.** Click your Mac's hard drive in the upper-left side of the Disk Utility window, just below the "Internal" heading.

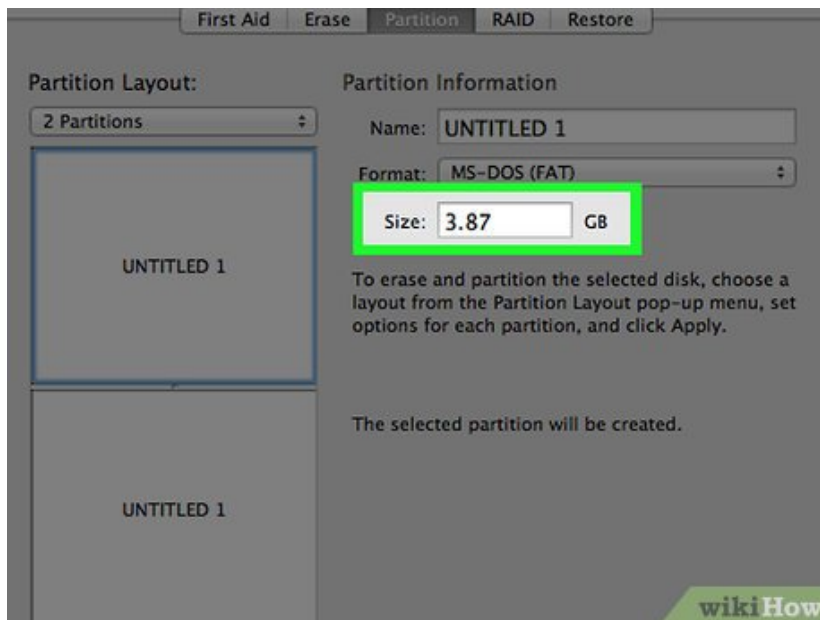


Click **Partition**. This tab is at the top of the Disk Utility window.



6.

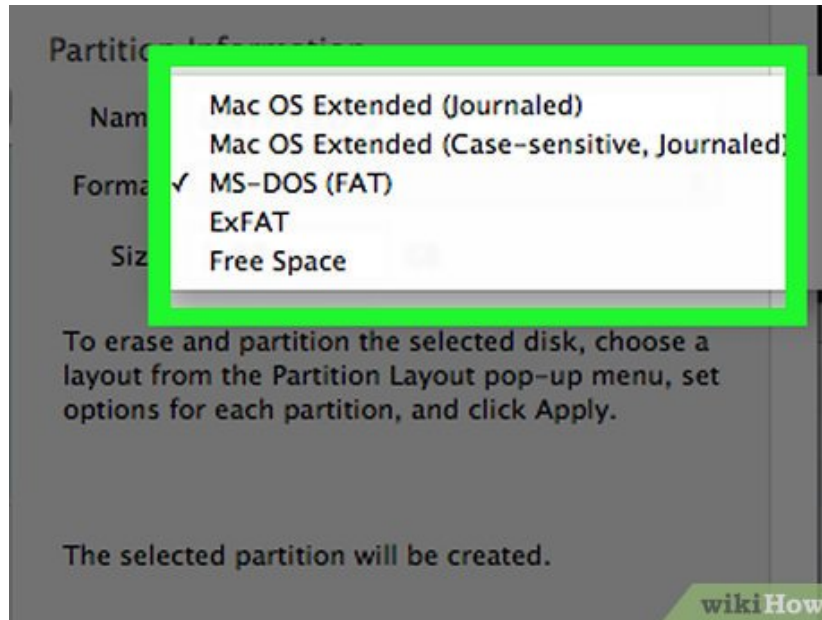
Click . It's below the hard drive circle that's on the left side of the page.



7.

**Determine your partition's size.** Click and drag the knob at the bottom of the hard drive circle counter-clockwise to increase the partition's size, or clockwise to reduce it.

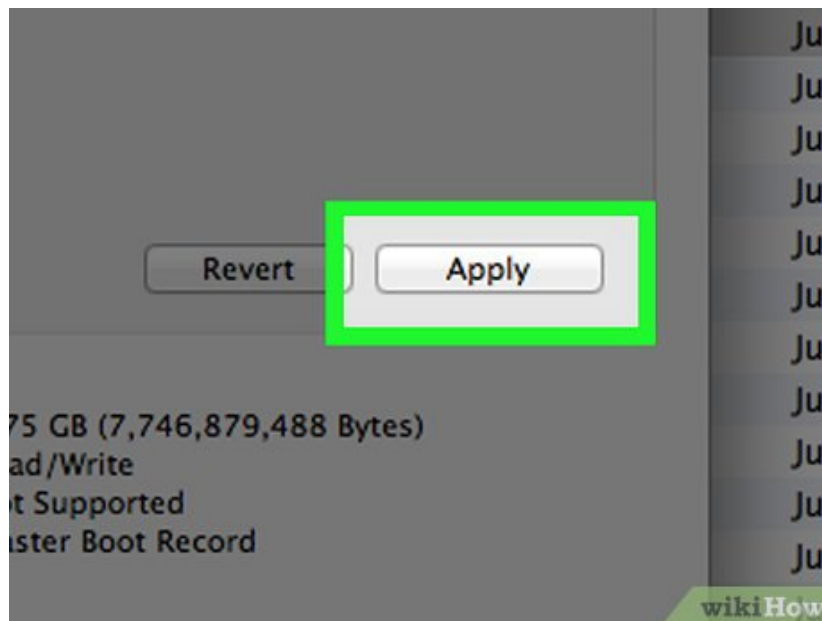
1. You can also type a number in gigabytes (GB) into the "Size:" field to set your partition's size.



8.

**Select a file format for your partition.** Click the **File format** drop-down box, then click a format. This will set your partition's file system as your selected format.<sup>[2]</sup>

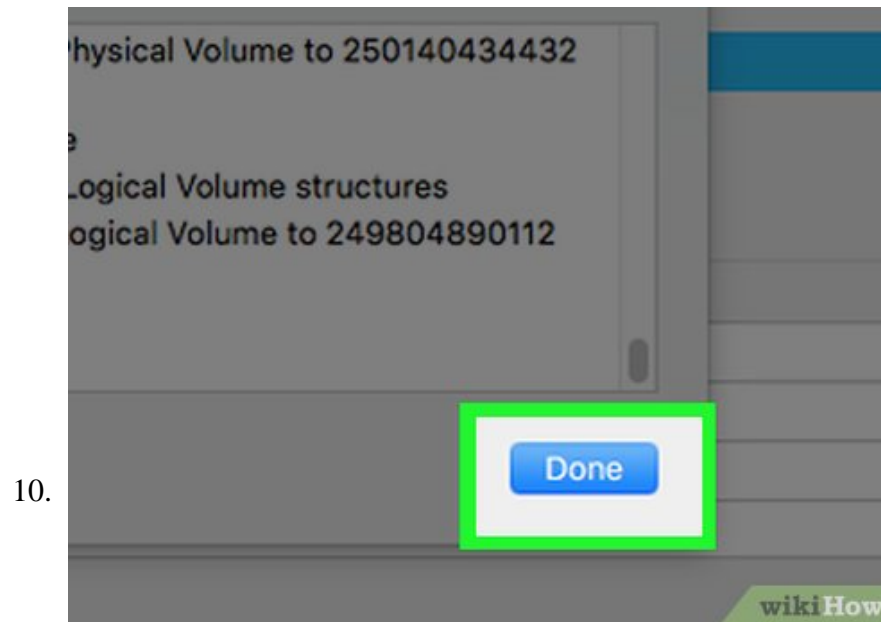
1. If you're setting up your partition for use with Mac, click a **MacOS Extended** option in the drop-down menu.
2. You can also enter a name for your partition in the "Name:" field.



9.

**Click** **Apply**. It's in the bottom-right corner of the page. Doing so will prompt your Mac to begin creating your partition.

1. This process will take a while, especially if your hard drive and partition are both larger than one terabyte.



Click  when prompted. Your Mac's partition has successfully been created.

You finished reading the article "**How to Create a Partition**" edited by the [TipsMake](#) team. We hope this article has provided you with many useful tech tips and tricks. You can search for similar articles on tips and guides. Thank you for reading and for following us regularly.

---