

How to create a new pool and storage space in Windows 10

Storage Spaces help protect data from disk errors and expand storage over time as you add drives to your PC. This tutorial will show you how to use Storage Spaces to create a new pool and storage space in Windows 10.

Storage Spaces help protect data from disk errors and expand storage over time as you add drives to your PC. There are 3 types of storage space: **simple**, **mirror** and **parity**.

Note : You must be logged in as an administrator to create a new pool and storage space.

How to create a new pool and storage space in Windows 10

Step 1:

Add or connect the drives you want to group with Storage Spaces.

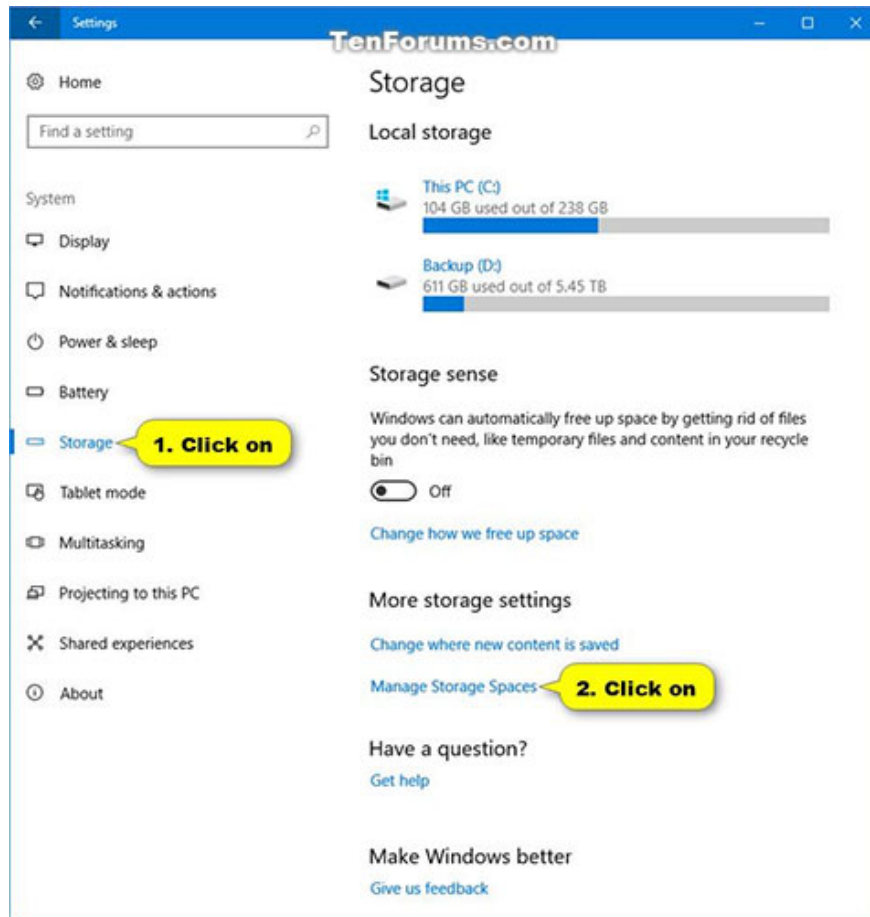
These drives can be internal hard drives, external hard drives, or SSDs. You can use many different types of drives with Storage Spaces, including USB, SATA and SAS drives.

The number of drives needed will depend on whether you want to create a storage space simple, mirror or parity.

Step 2:

Open Settings, click the **System** icon , click **Storage** on the left and click the **Manage Storage Spaces link** on the right.

You can also open Control Panel (icon view) and click the **Storage Spaces icon** .



Click the Manage Storage Spaces link on the right

Step 3:

Click the **Create a new pool and storage space link** .

Step 4:

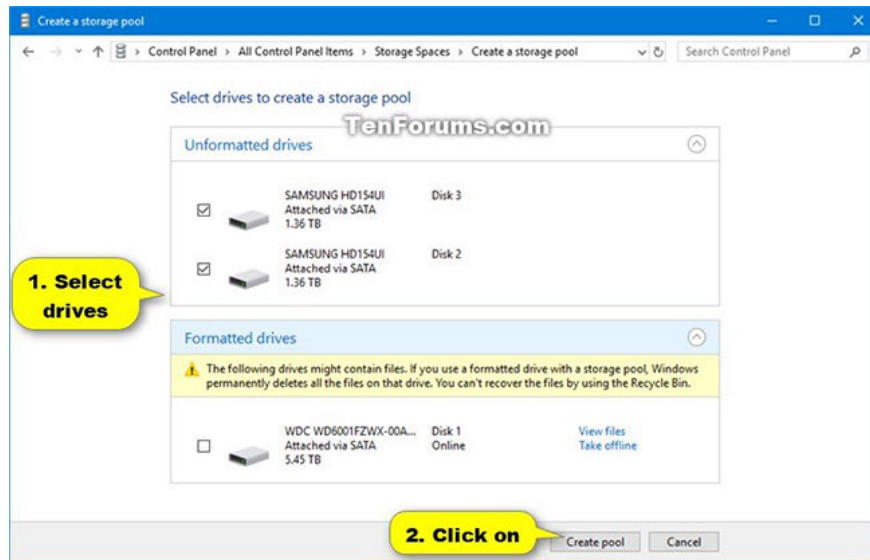
Click **Yes** if prompted by UAC.

Step 5:

Select the drives you want to add to the new storage space to create a storage pool, then select **Create pool**.

Windows will permanently delete all partitions and files on the selected formatted drives.

Be sure to back up everything you don't want to lose to another drive first.



Select Create pool

Step 6:

Enter the name (for example, " **Storage space** ") you want for this storage space.

Step 7:

Select the drive letter (eg " **E** ") you want for this storage space.

Step 8:

Select the file system you want for this storage space.

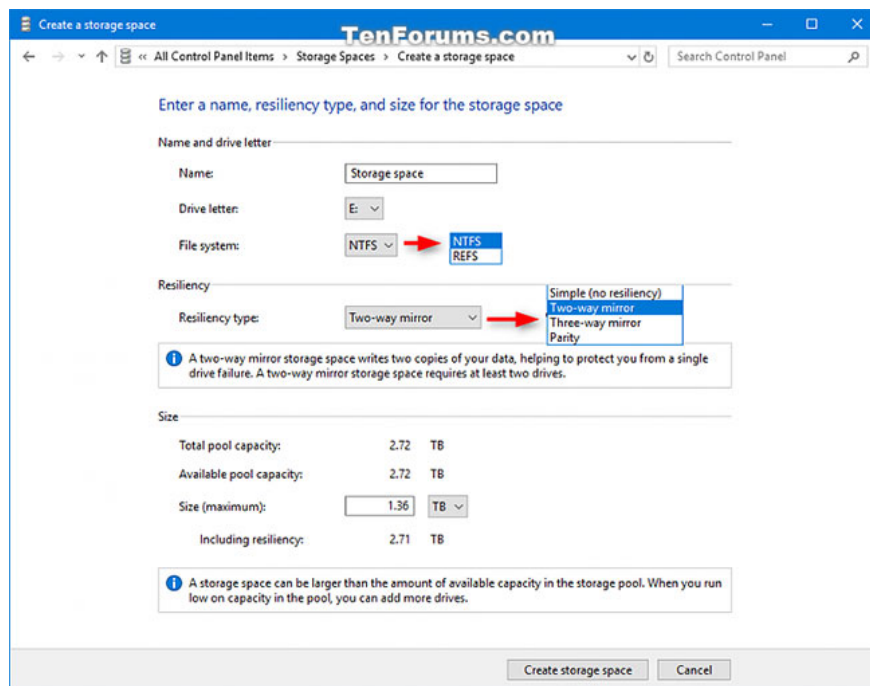
REFS will only be available if it has been enabled earlier. Refer to: [Enable / disable ReFS \(Resilient File System\) on Windows 10](#) for more details.

Step 9:

Choose **Simple**, **Two-way mirror**, **Three-way mirror** or **Parity** that you want for this storage space.

Step 10:

Enter the maximum amount you want this storage space to be able to reach and click **Create storage space** .

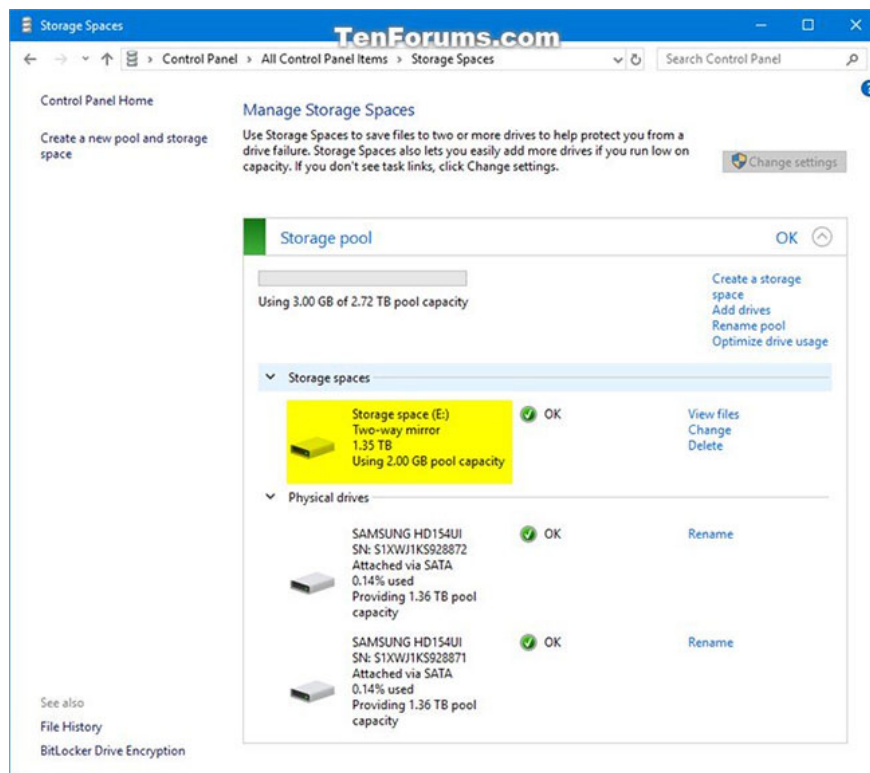


Select Create pool

Step 11:

Storage pool and storage space will be created.

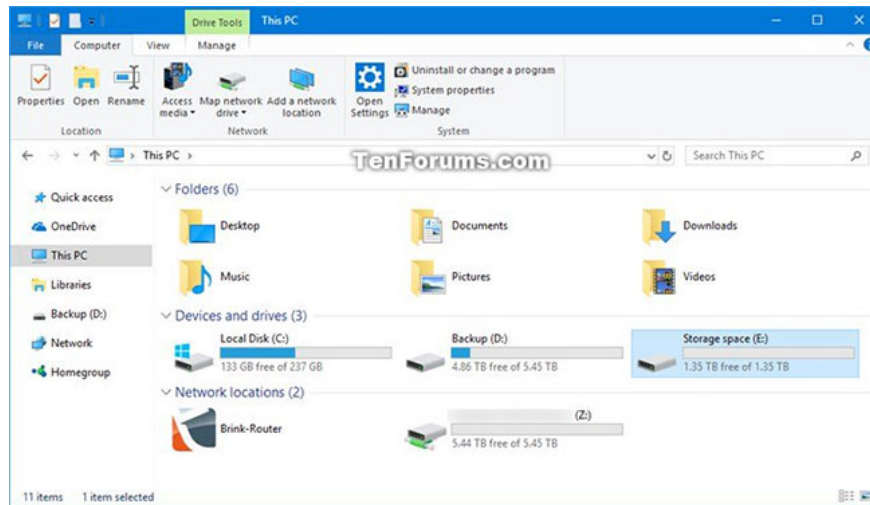
Physical drives are the drives you selected in step 5 above.



Storage pool and storage space will be created

Step 12:

This storage space (virtual drive) will now show as a drive (for example, "E") in **This PC** for users to use as any other drive on the PC.



This storage space will now display as a drive in This PC

You finished reading the article "**How to create a new pool and storage space in Windows 10**" edited by the [TipsMake](#) team. We hope this article has provided you with many useful tech tips and tricks. You can search for similar articles on tips and guides. Thank you for reading and for following us regularly.