

# How to Create a Minecraft PE Server

This article shows you how to create a server for Minecraft Pocket Edition on iPhone or Android. The simplest (and safest) way to do this is to sign up for a paid Realm subscription in Minecraft PE, but you'll need to create an Xbox Live account if you don't already have one. If you want to continue playing the game for free, you can use a web service called Aternos or the Server Maker application to host your server.

## Use Realm



**Make sure you're connected to Wi-Fi.** Your iPhone or Android must be connected to Wi-Fi (not using mobile data) to do this.

You also need to be running the latest version of Minecraft. If you don't have that version yet, update Minecraft PE before continuing.



**Open Minecraft.** Tap the Minecraft icon that looks like a block of dirt with grass on top.

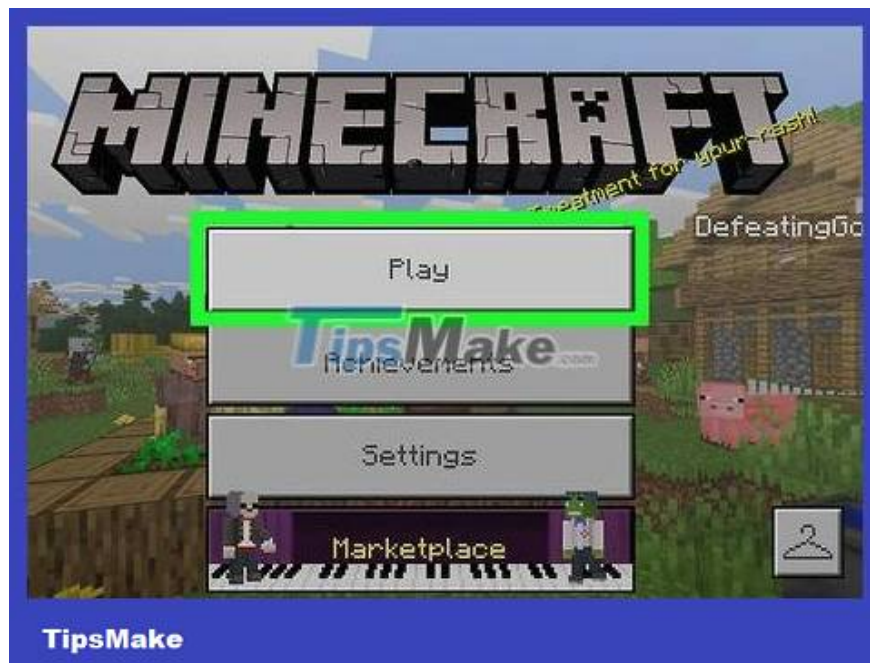


**Tap Sign In** located on the left side of the screen.

If you see your Xbox Live account name here, skip this and the next step.



**Enter Xbox Live information.** Type the email address and tap **Next** , type the password and tap **Next** , then tap **Let's play** when prompted.

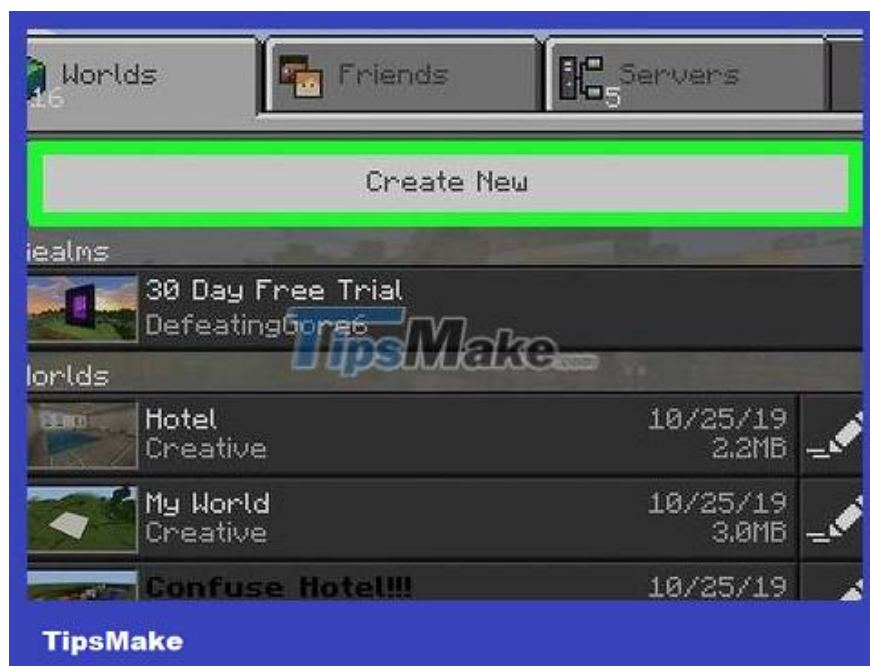


**Tap Play** . This button is at the top of the list of menu options in the middle of the screen.



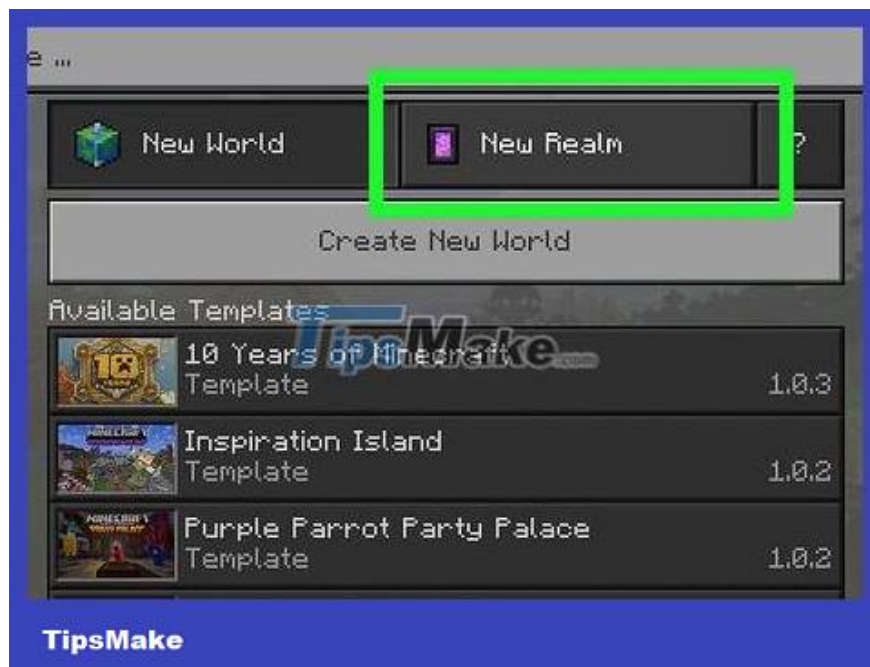
TipsMake

**Tap the Worlds tab .** This option is located in the upper left corner of the screen.



TipsMake

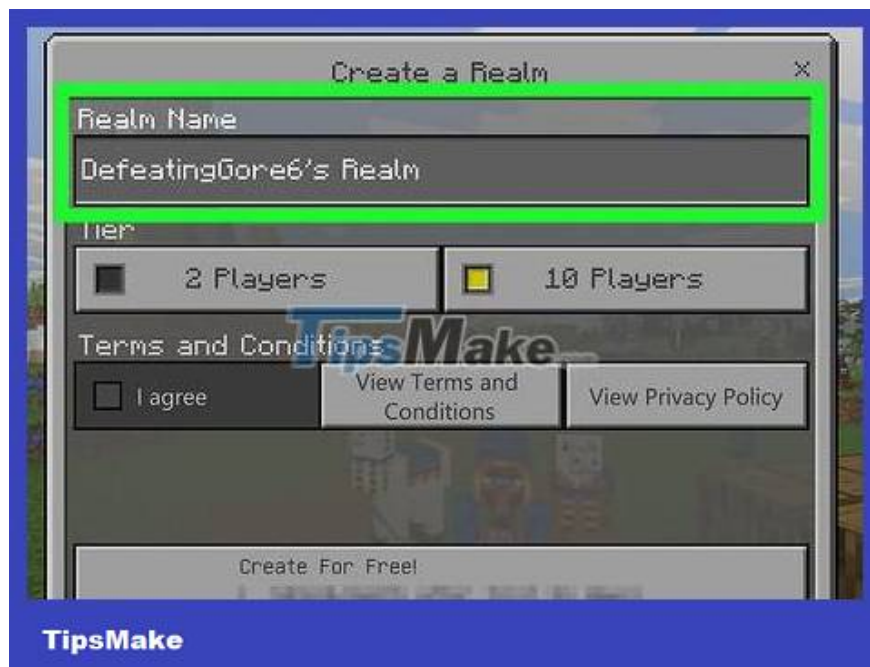
**Tap Create New .** This button is at the top of the **Worlds** page .



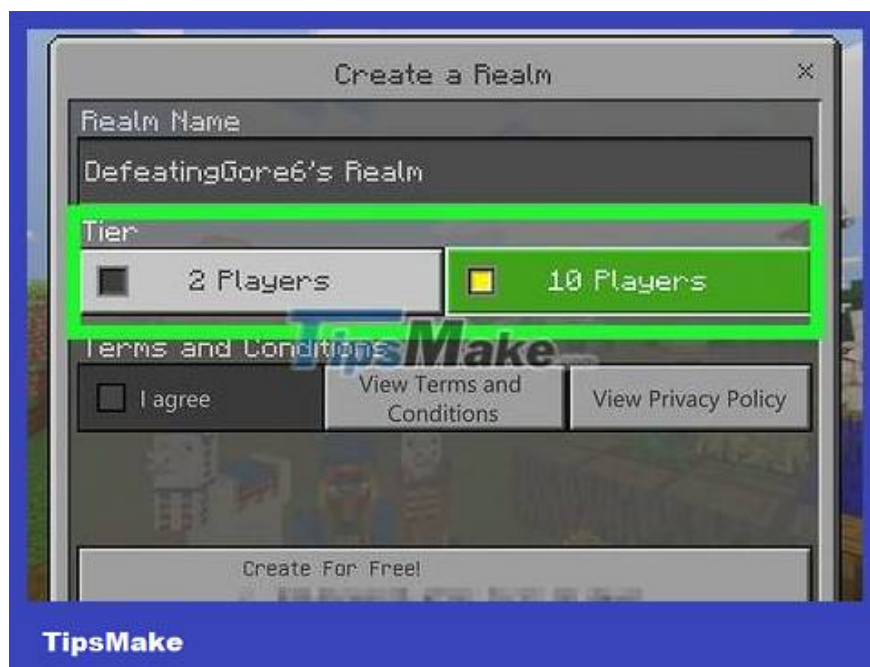
**Tap the New Realm tab .** This tab is at the top of the screen.



**Tap Create New Realm.** It's near the top of the page.



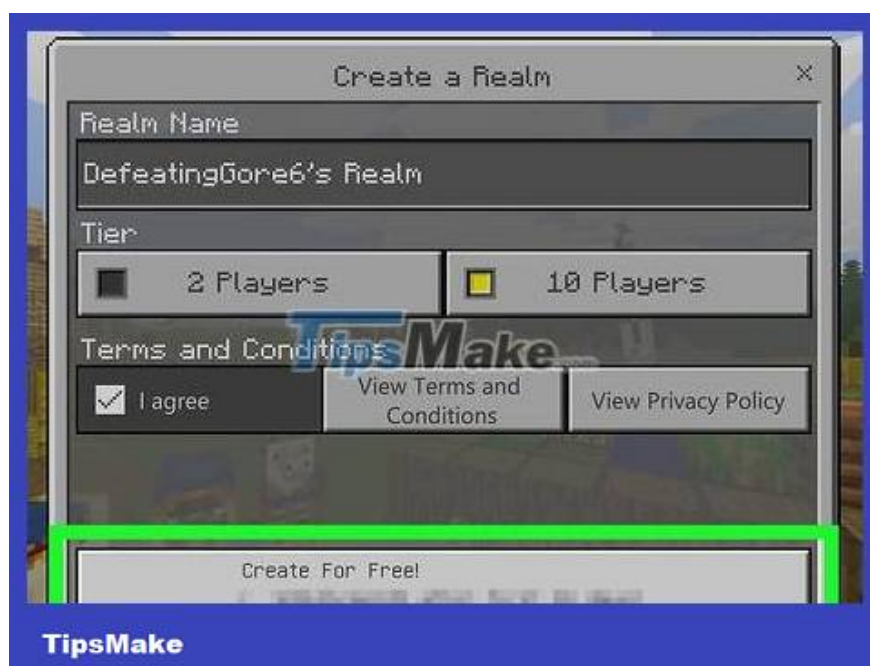
**Name your Realm.** Tap the "Realm Name" text box, then type whatever name you want for the Realm.



**Select level.** If left by default, Realm will support 10 players and you; If you want to use a cheaper server for a few friends, you can tap **2 Players** under "Tier".

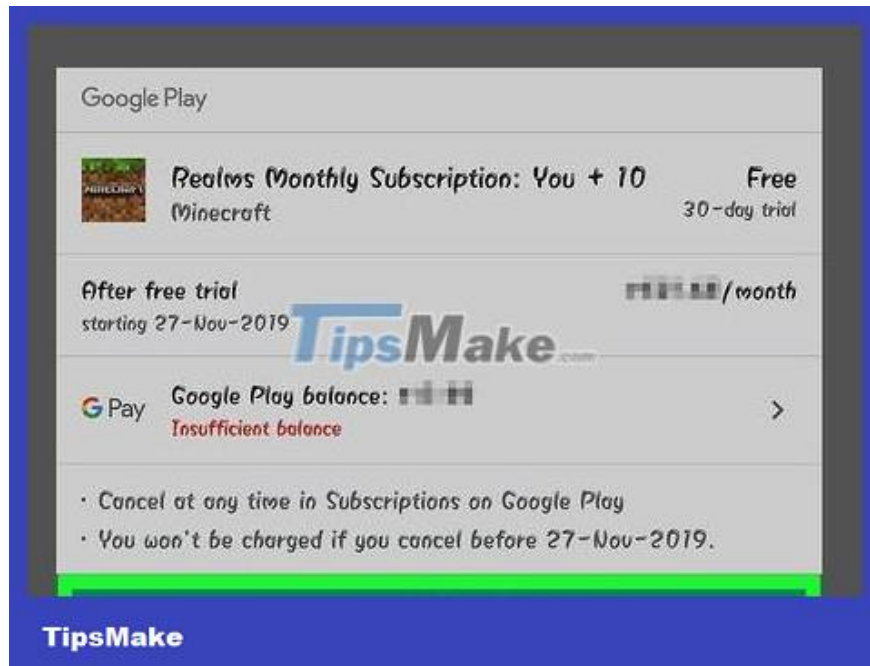


**Check the "I agree" box on the left side of the screen.**



**Tap the Create button located at the bottom of the screen.**

If you're asked to enter your password, Touch ID, or payment information, do so before continuing.

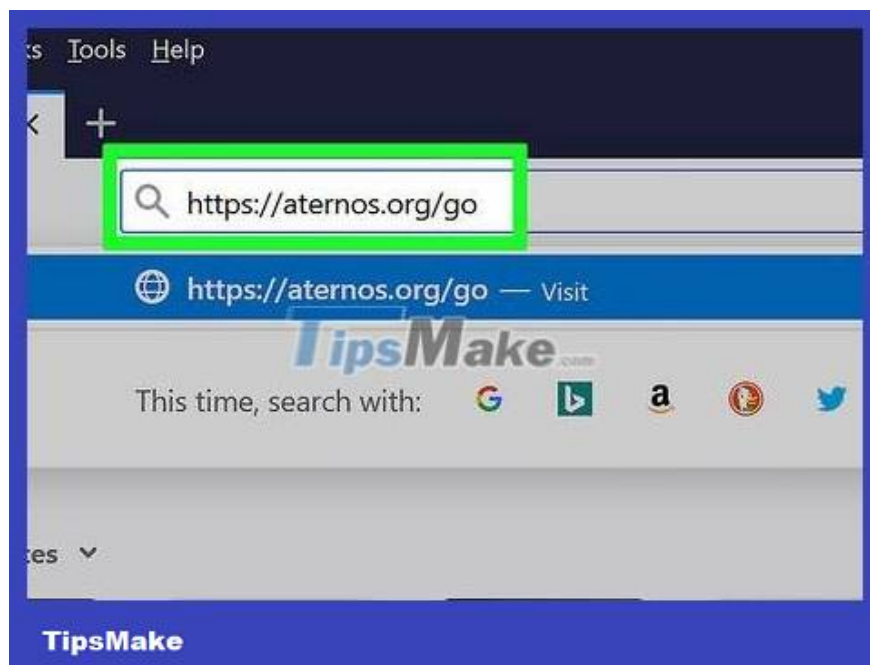


**Tap Subscribe when notified.** This is the step to create a Realm under the name you assigned.

You can cancel your Realm premium subscription at any time by tapping the pencil icon next to Realm, tapping **Subscription** , tapping **Manage Subscription** , then following the onscreen instructions to cancel your premium subscription .

To see Realm options, tap the pencil icon to the right of Realm. You can change many options, such as difficulty here.

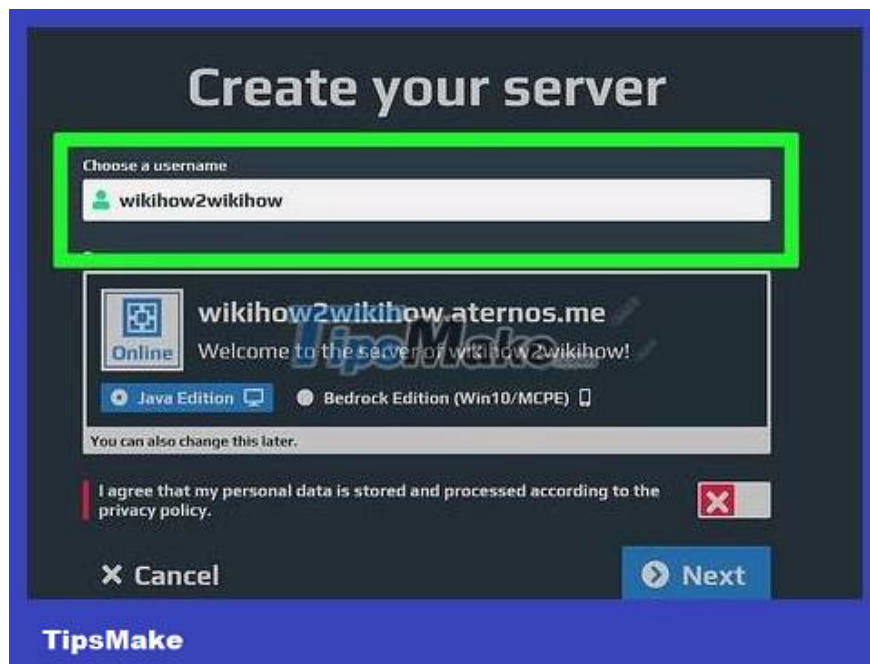
## Use Aternos



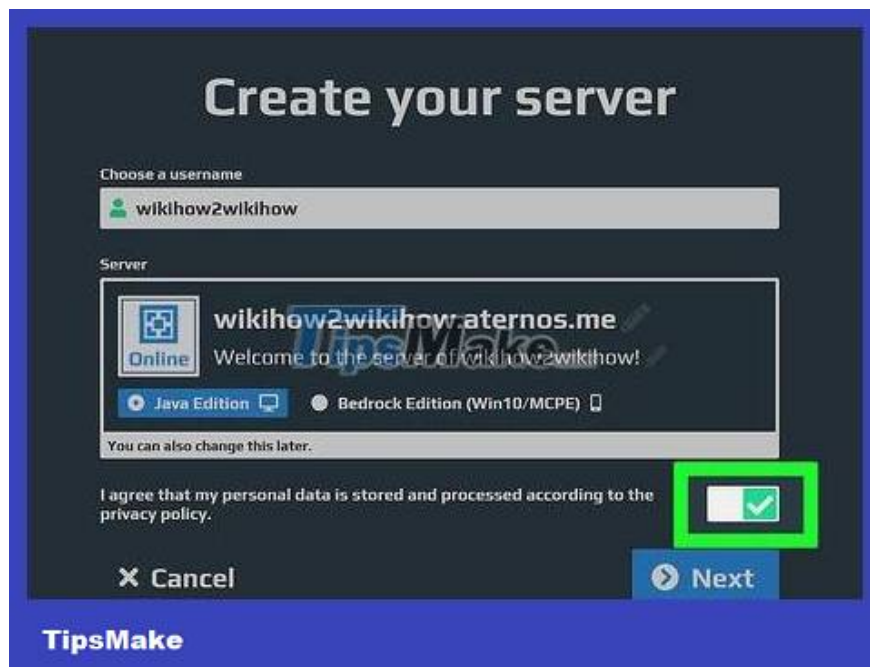
**Open the Aternos website.** Visit <https://aternos.org/go> using your computer's web browser.



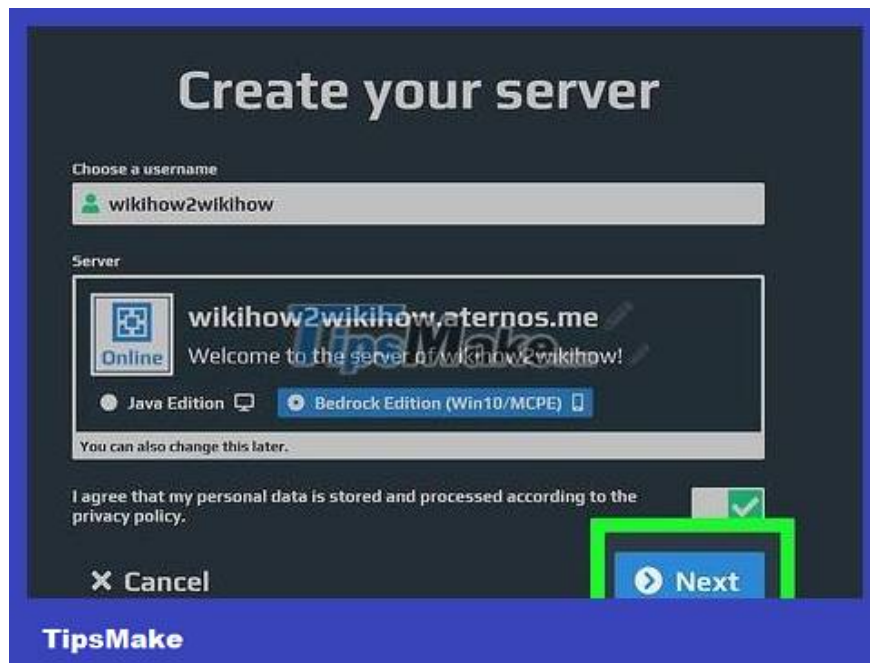
**Click Create your server .** This navy blue button is in the middle of the page.



**Enter username.** In the "Choose a username" text box, type whatever username you want to give yourself on your server.



Click the "I agree" switch. It is a white "X" on a red background. You will see a check mark replacing the letter "X".



Click Next located at the bottom of the page.



**Enter email address and password.** Fill in the following fields:

*Email* — Type the email address you have access to.

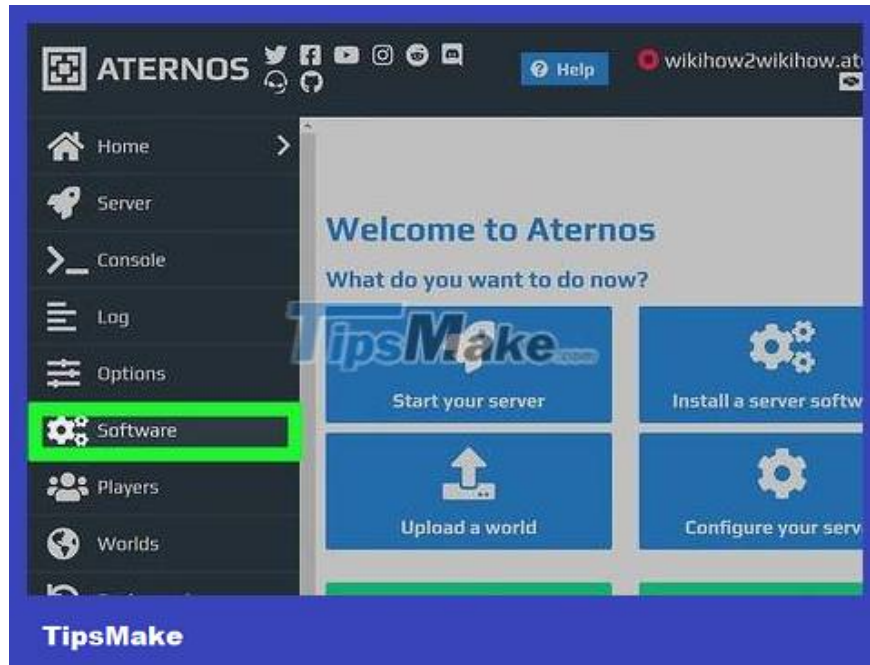
*Password* — Type a password different from the email address password.

*Retype Password* — Retype the password.



**Click Sign up .** This button is at the bottom of the page. This is the step that displays the Aternos dashboard.

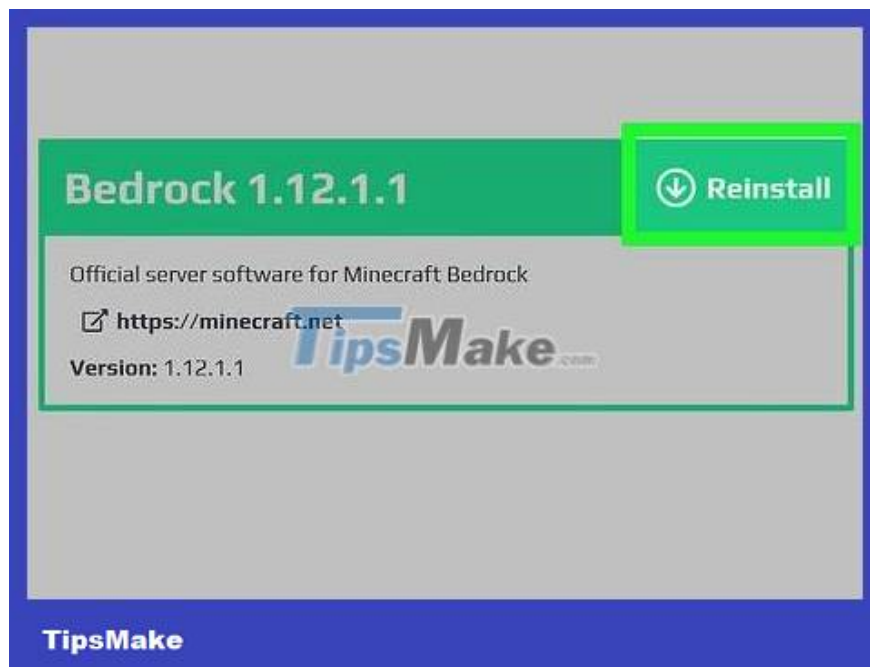
If you're using an ad blocker, you'll see a warning on the next page. You can turn off the ad blocker and reload the page, or click the **Continue with adblocker button anyway** .



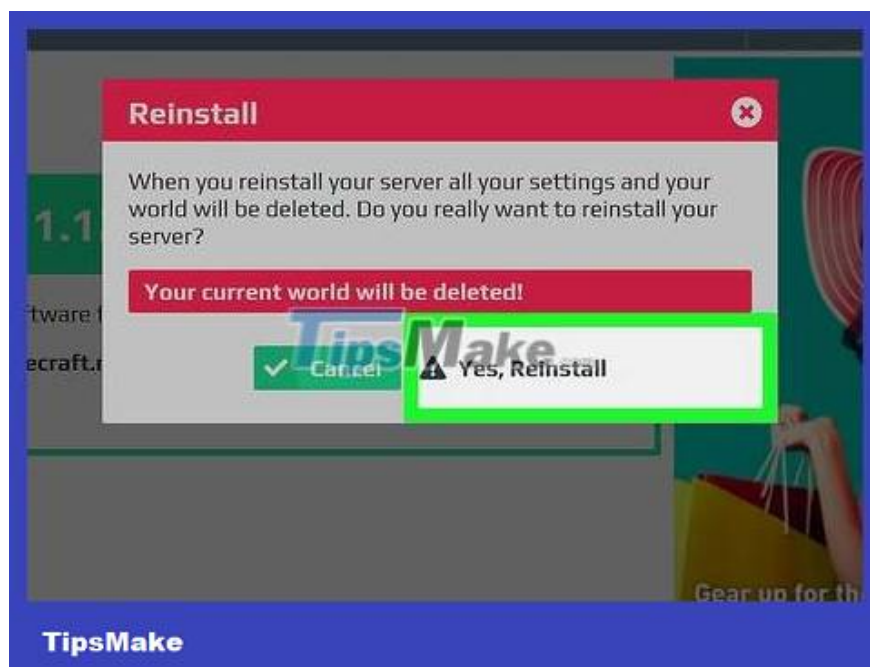
Click **Software** . This tab is on the left side of the page.



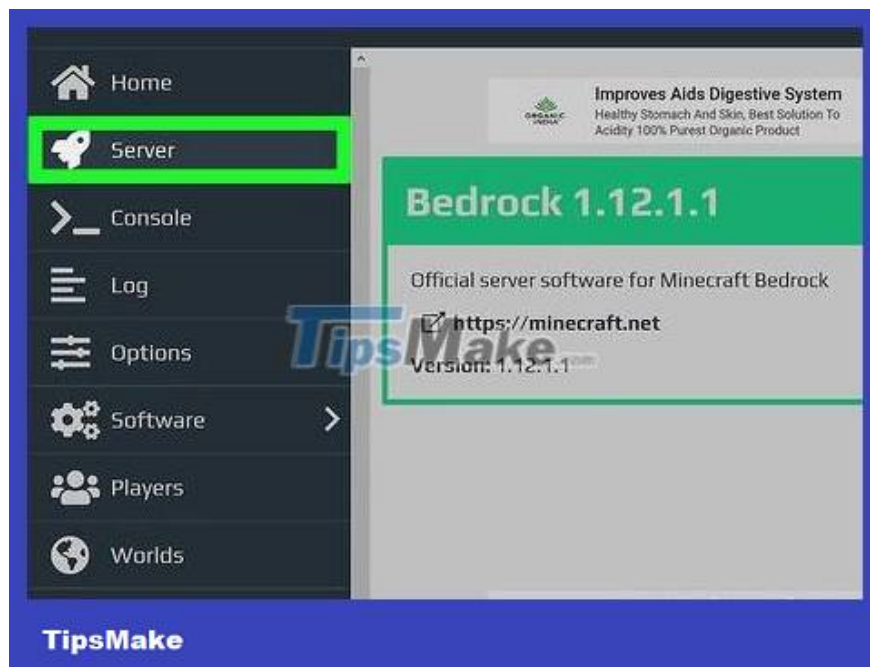
Click on **Win10/MCPE** located on the right side of the page.



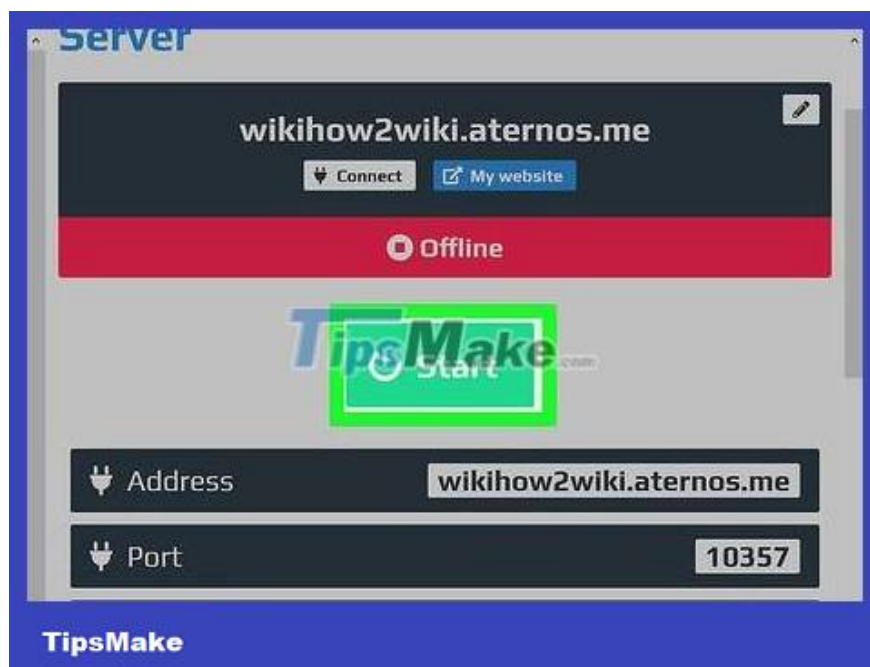
Click **Reinstall** . You'll see this button in the upper right corner of the window.



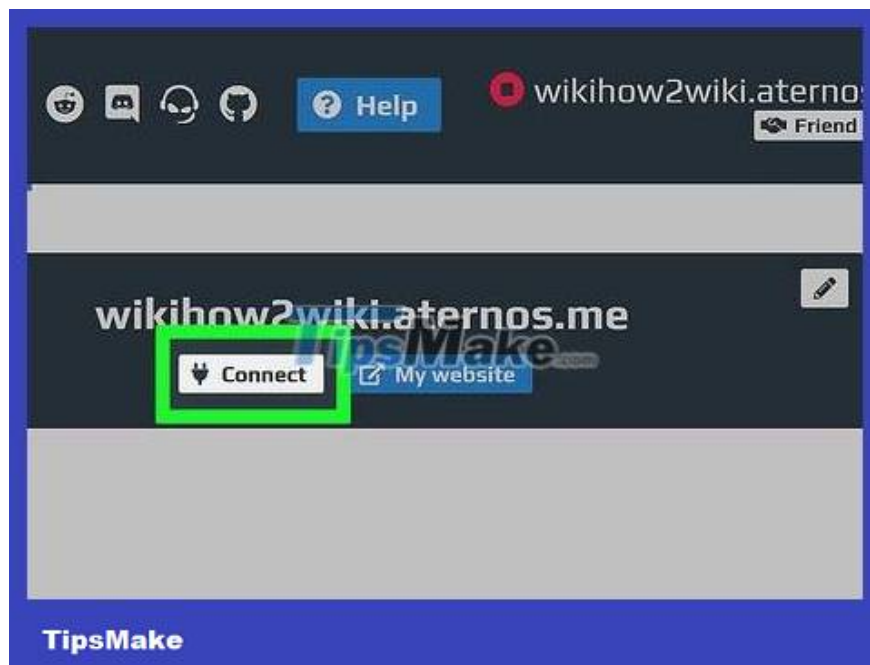
Click **Yes, Reinstall** when prompted. This is the step to install PocketMine as an extension for the Aternos server.



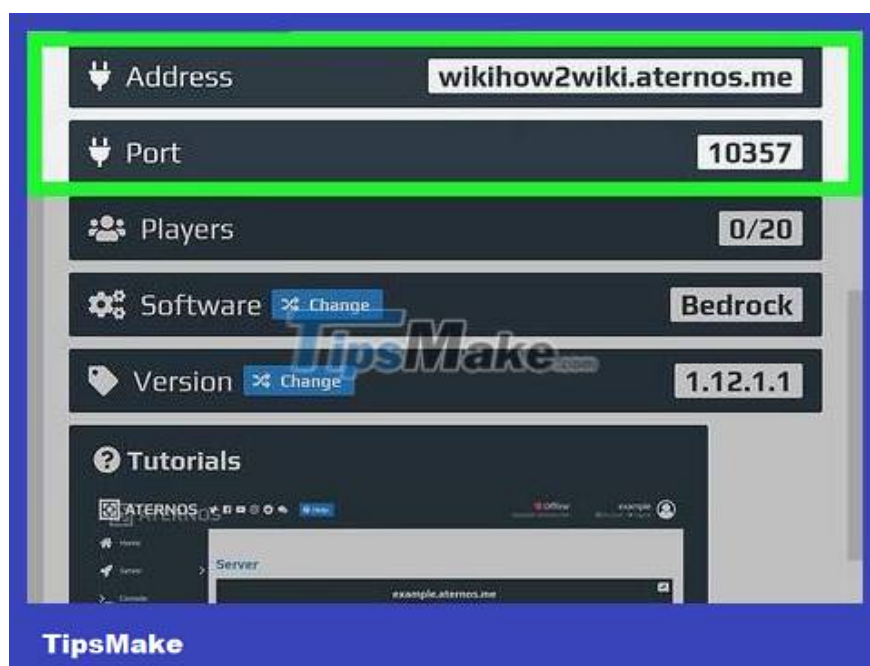
Click the **Server** tab . This tab is on the left side of the page.



Click **Start** . This green button is in the middle of the page.



**Click Connect** . This button is near the top of the page. This is the step that displays the pop-up window.



**Note down the server address and port number.** You'll see them in the pop-up window; both are necessary information to set up a Minecraft PE server.



**Connect to the server.** To enter the server and start playing, follow the steps below:

Open Minecraft PE.

Tap **Play** .

Tap the **Servers** tab .

Tap **Add Server** .

Enter a name for the server in the "Server Name" text box.

Enter the server's address in the "Server Address" text box.

Enter the server's port number in the "Port" text box.

Tap **Play** .

You finished reading the article "**How to Create a Minecraft PE Server**" edited by the [TipsMake](#) team. We hope this article has provided you with many useful tech tips and tricks. You can search for similar articles on tips and guides. Thank you for reading and for following us regularly.