

How to create a hot key for Windows to sleep and shutdown

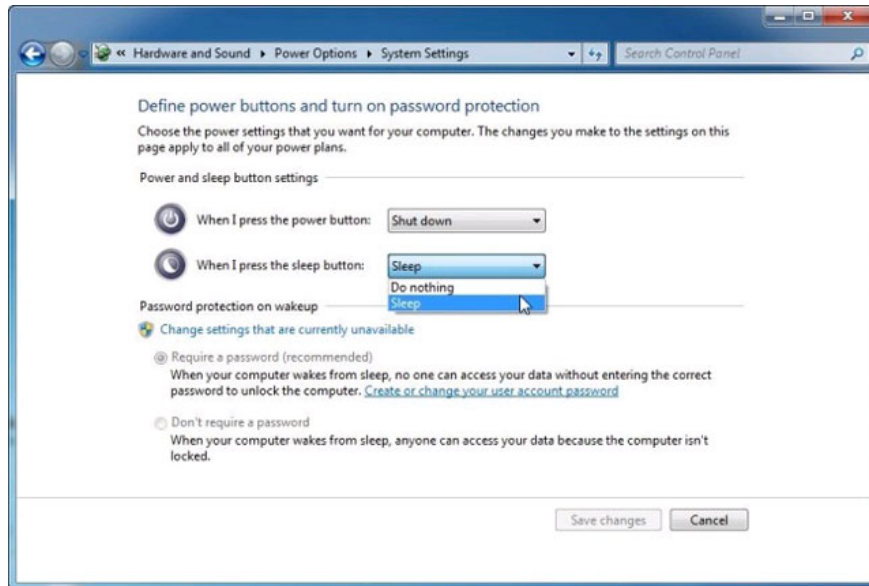
I want to ask, is there any shortcut to put Windows computer into sleep mode, reboot, or turn it off completely? Computers often have special buttons for these purposes. Alternatively, you can create shortcuts for these tasks, and assign hotkeys for shortcuts. Let's start with the special buttons available.

Please read TipsMake.com: Is there any shortcut to put Windows computer into sleep mode, restart, or turn it off completely? And basically, computers or operating systems often have special buttons for these purposes. Alternatively, you can create shortcuts for these tasks, and assign hotkeys for shortcuts. In the article below, let's TipsMake.com learn how to create buttons, shortcuts, hotkey to turn off, sleep . quickly!

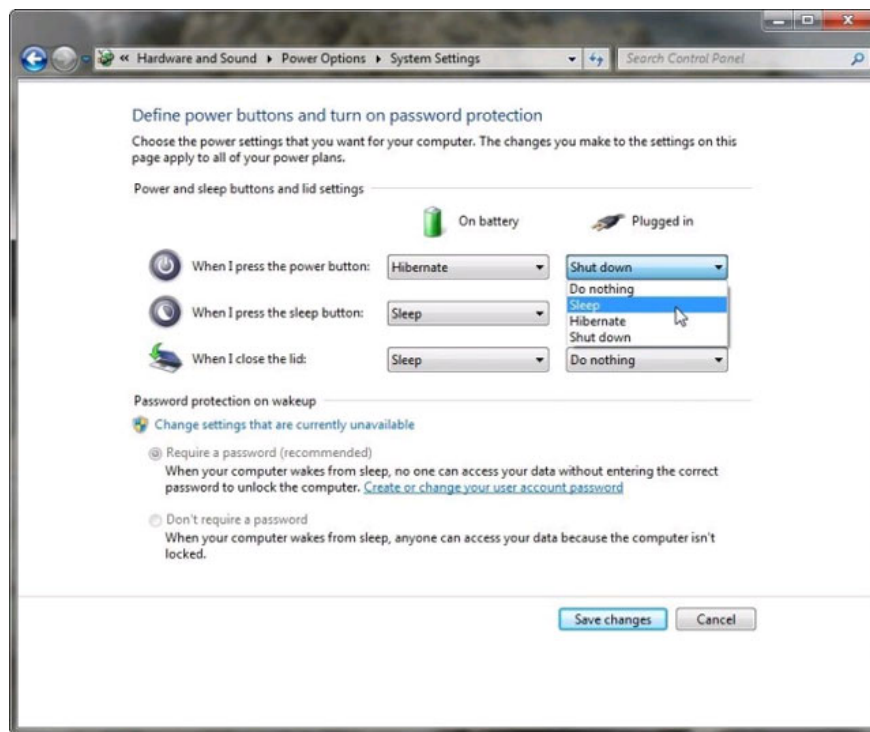
1. Based on available function keys:

In **Windows 7** , click **Start** > type **power** > select **Power Options** (or go to **Control Panel> Power Options**) . In the left pane of the window that appears> select **Choose what the power buttons do** .

How much you find will depend on the type of computer you have. If you have a desktop computer, you can assign actions to the **Power** and **Sleep** buttons.



If you have a laptop, laptop, you will have the third option ' *When I close the lid* ', and all 3 options repeat twice for **On battery** and **Plugged in** .



Power is the button you press when you turn on the computer. **Sleep** buttons may have / are not on the keyboard. To find the *Sleep* button, find the key with the crescent moon icon. For laptops, Sleep can be a combination of the **Fn** key and another key.

If you can't find the Sleep key on the keyboard, check the keyboard documentation to see, is there any way to assign another key for that purpose?

2. Create shortcuts and hot keys:

If the keyboard is not available, you need to add power hotkeys (*for example, if there is no Sleep key*), you can create your own hotkey.

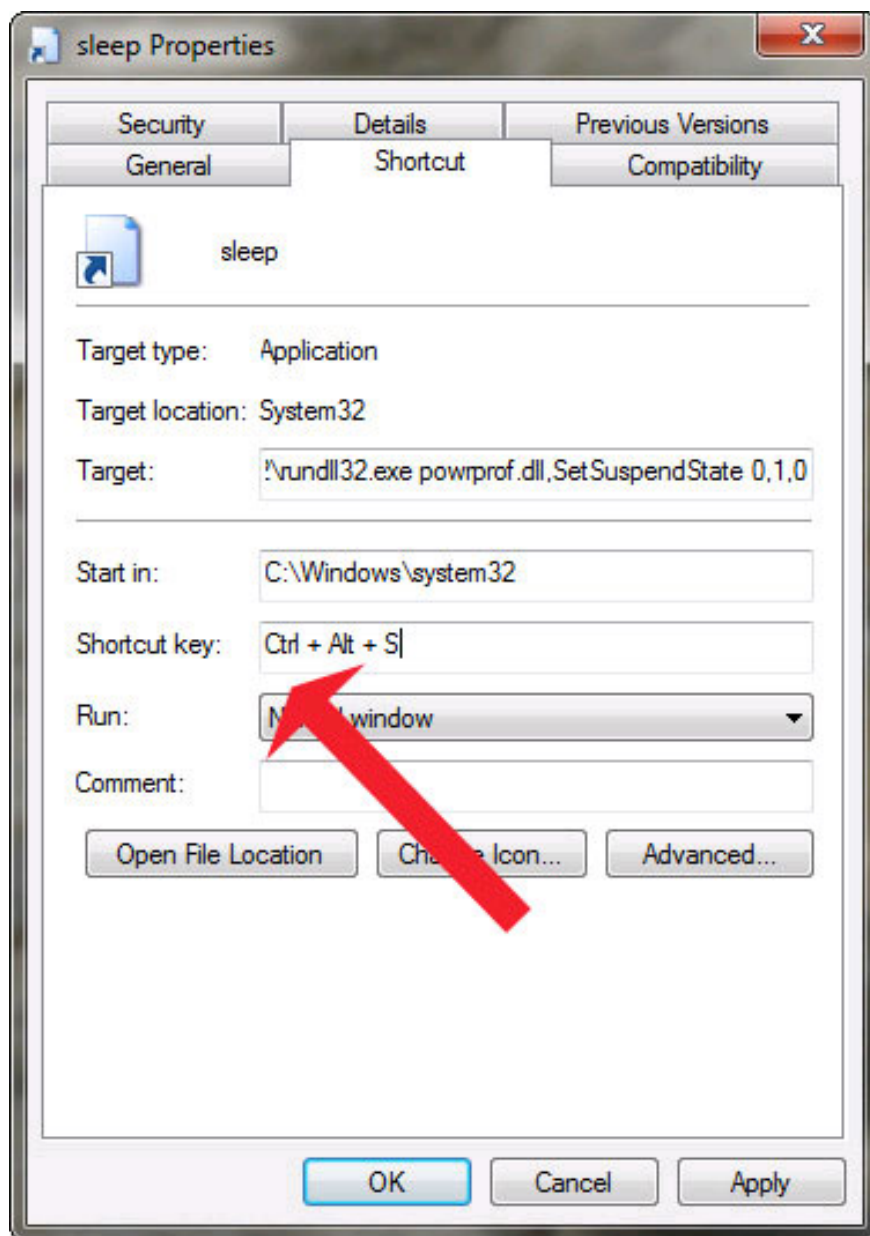
First, create a **shortcut** : Right-click an empty spot on the desktop and select **New > Shortcut** . On the *wizard* , enter the appropriate command:

1. **Shutdown (Shutdown)**: Shutdown.exe -s -t 00
2. **Reboot** : Shutdown.exe -r -t 00
3. **Lock** : Rundll32.exe User32.dll, LockWorkStation
4. **Hibernate or Sleep** : rundll32.exe powrprof.dll, SetSuspendState 0.1,0

If the *Hibernate* option is enabled, the command line will eventually put the computer into Hibernation. If not, it will put the computer into *Sleep* .

To control this setting in Windows 7, click **Start** > type **cmd** > right click on **cmd.exe** and select **Run as administrator** . In **Windows 8** , go to **Search charm** > type **cmd** > right click on **Command Prompt** and select **Run as administrator** .

At the command prompt in the *Command Prompt* window that appears, type **powercfg -hibernate off** (to turn off the Hibernation option) or **powercfg -hibernate on** (to turn on the Hibernation option) > press **ENTER**.



Now let us turn the shortcut into hotkey: Right click on the **shortcut** and select **Properties** . On the *Shortcut* tab, click the **Shortcut key** field> press the key you want to use. Windows will automatically add the **Ctrl-Alt** prefix to it, reducing the possibility of accidentally turning off your computer. *Good luck!*

You finished reading the article "**How to create a hot key for Windows to sleep and shutdown**" edited by the [TipsMake](#) team. We hope this article has provided you with many useful tech tips and tricks. You can search for similar articles on tips and guides. Thank you for reading and for following us regularly.