

How to create a grid in Photoshop

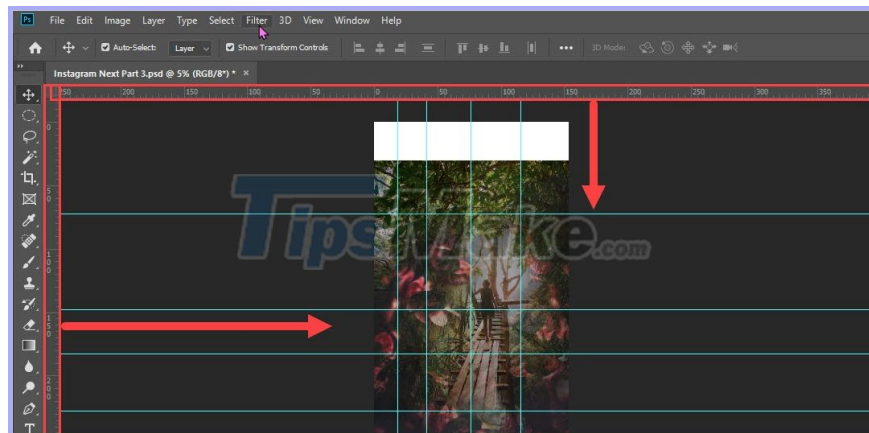
When you need to work with content that needs precise division, creating a grid in Photoshop is extremely necessary, when creating the grid, you will have the milestones to deploy content and ideas. However, creating a grid requires a lot of skill set parameters to get the most beautiful grid frame with high accuracy.

1. Create a freehand grid

If you only need to create a grid to get milestones, regardless of the size or distance between the cells in the grid, you can do the following:

You proceed to hold down the left mouse button on the bar and drag down the framework. Each time you do this you will create a grid line, repeated you will get a lot of mesh on the screen.

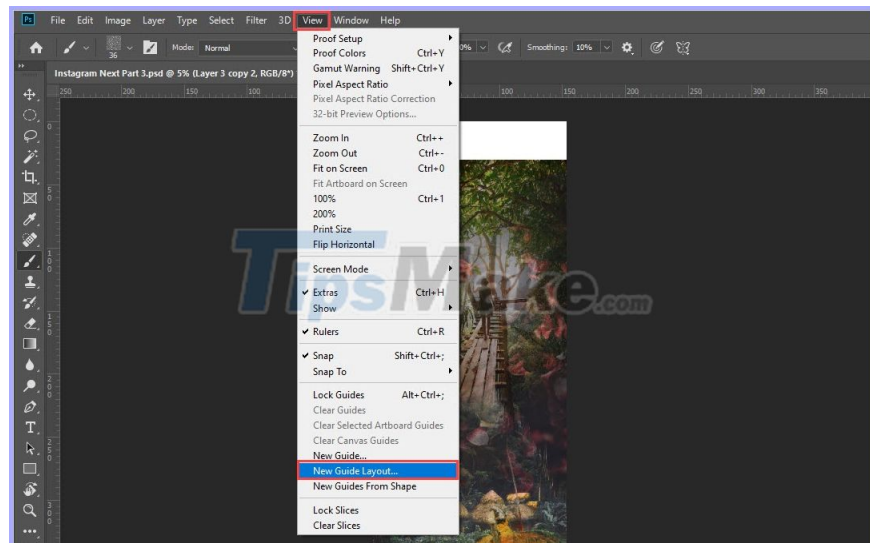
To delete the free mesh, you just need to hold and click on the grid bar and drag them back to the ruler area to automatically delete.



2. Create an even grid of images

This method is used when you want to create squares, grid lines of equal size and straight, evenly divided from the main working frame.

Step 1: First, select **View -> New Guide Layout** .



Step 2: When the **New Guide Layout** window appears, you proceed to set the following information:

1. Columns: Vertical columns

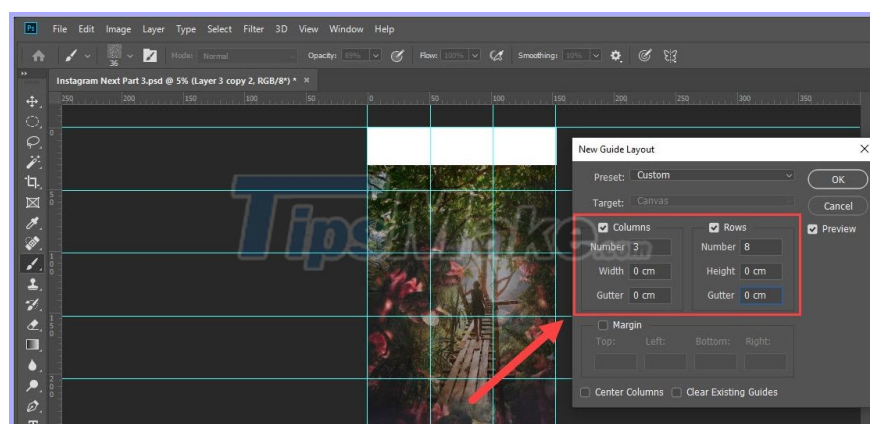
1. Number: The number of cells to divide
2. Width: The width of the cell
3. Gutter: The thickness of the grid line

2. Rows: Horizontal rows

1. Number: The number of cells to divide
2. Height: The height of the cell's height
3. Gutter: The thickness of the grid line

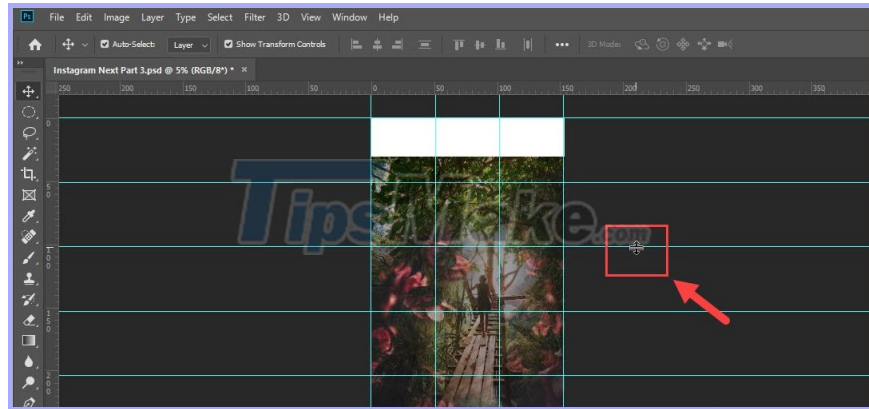
If you want to split cells equally based on the size of the working frame, then you set Width and Height to 0.00cm, the system will default to split the size equally.

Typically, Gutter (size grid thickness) people will also set to 0.00cm always so they do not take up too much work area on the screen. If you leave Gutter big, they will hide a lot of details on your main canvas.



3. Move the gridlines

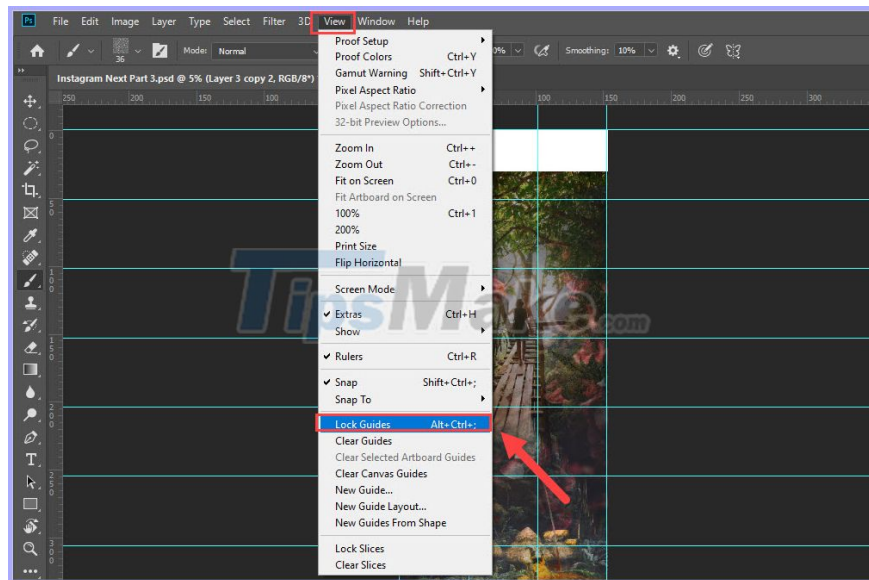
To move the grid line, you just need to move to the grid line, the mouse pointer will switch to the Move tool. You proceed to hold and right click on the grid line and drag away to move them.



4. Lock the gridlines

If you are afraid that during the process you will move the wrong net and cause the size to be skewed, you can lock them. When locked, it is impossible to move the grid line (unless you unlock it again)

You choose **View -> Lock Guides (Alt + Ctrl +;)**

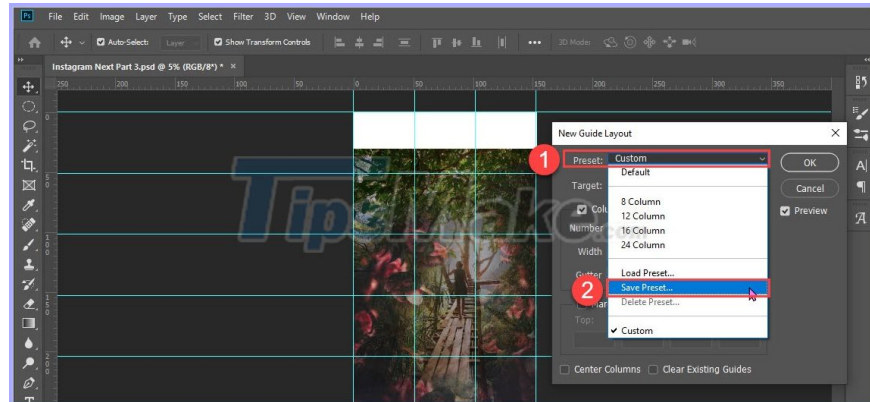


5. Save grid settings

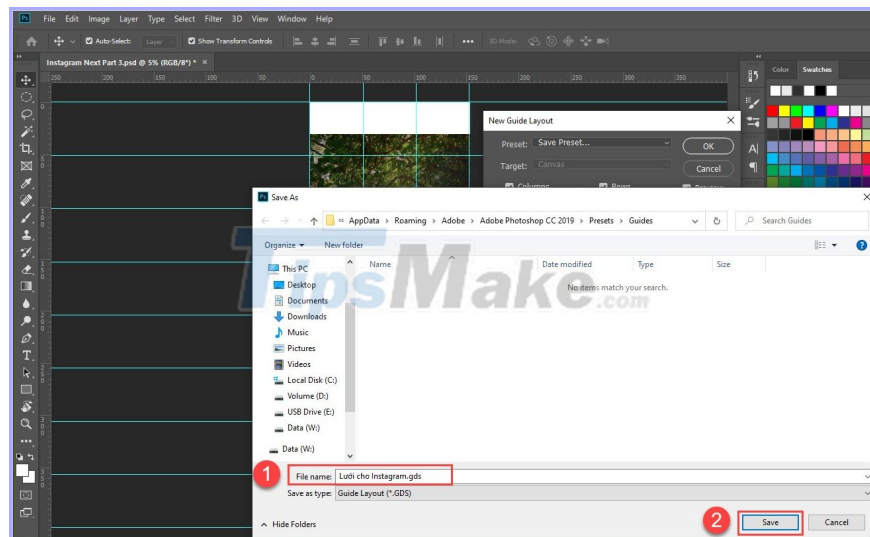
If you use that grid, you can save them as a Preset so that the next use will only need to choose without setting information and parameters.

Step 1: First, select **View -> New Guide Layout** .

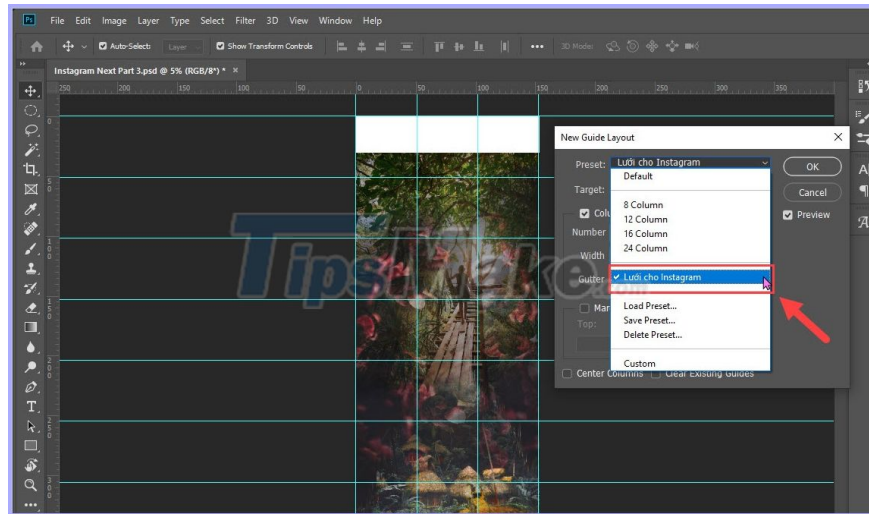
Step 2: Then, in the **Preset** section you choose **Save Preset** .



Step 3: Then, you proceed to name the grid to easily distinguish and select **Save** to save.



After saving, you will see that there are always Presets created the grid you just saved. From now on you can click on it to create a set of pre-set nets.



When you know how to create a grid, you will create a lot of different products. One of the good examples of grid making is Instagram photos.

Instagram



TipsMake.com

In this article, TipsMake showed you how to create grids and all grid related settings. Have a nice day!

You finished reading the article "**How to create a grid in Photoshop**" edited by the [TipsMake](#) team. We hope this article has provided you with many useful tech tips and tricks. You can search for similar articles on tips and guides. Thank you for reading and for following us regularly.
