

# How to create a dock on Windows with RocketDock

RocketDock software will bring the macOS dock bar to your Windows computer, creating a new desktop interface.

There are many ways and tools to refresh the Windows interface to change the default look of the computer, bringing a new look when used. One of the ways users can try it is to bring a dock on macOS to a Windows computer. The dock displayed on the Windows computer has the same interface as when we used it on macOS, with floating icons displayed when hovered over. To do this, users need to use a docking software for Windows like RocketDock.

This software will customize the computer interface in the style of macOS, including creating a dock in any position you want, through the setup interface for the dock. The following article will guide you how to use RocketDock software on your computer.

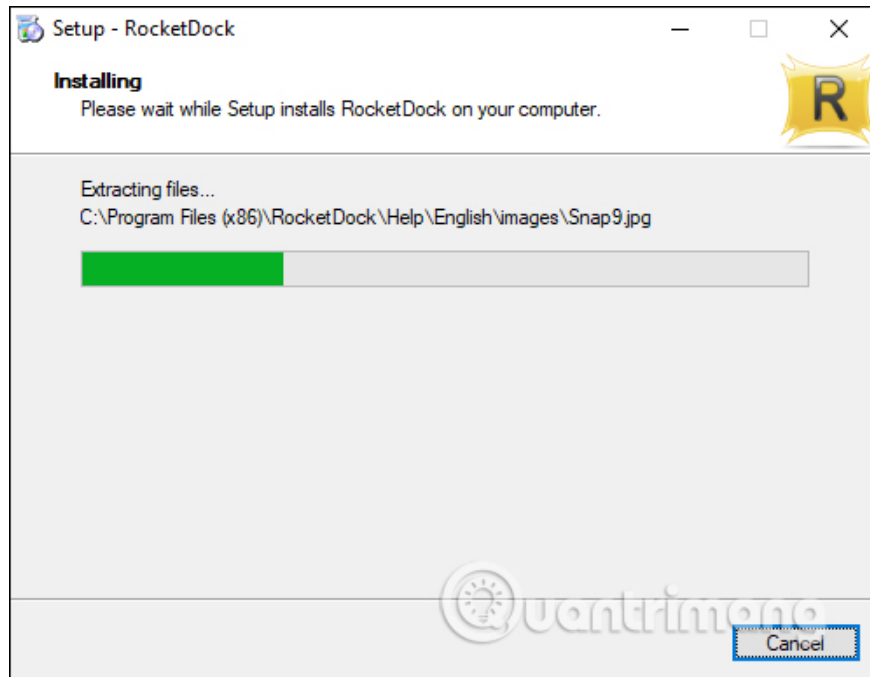
1. Refresh the Windows 10 interface with 11 customization tools
2. 10 ways to customize Windows 7
3. Some tips to customize Taskbar on Windows 10 effectively
4. How to make Windows 10 look like Windows 7

## Instructions for creating a dock on Windows

### Step 1:

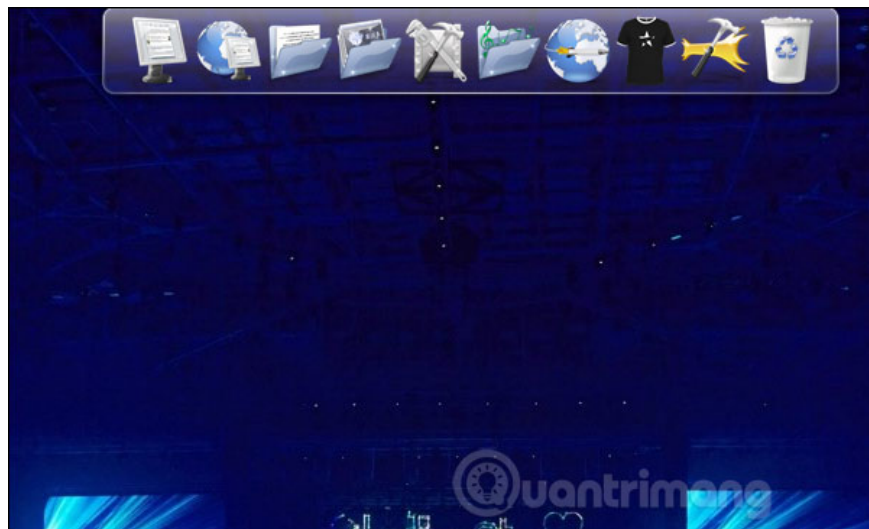
Please click on the link below to download RocketDock tool on the computer.

1. Download the RocketDock Windows tool

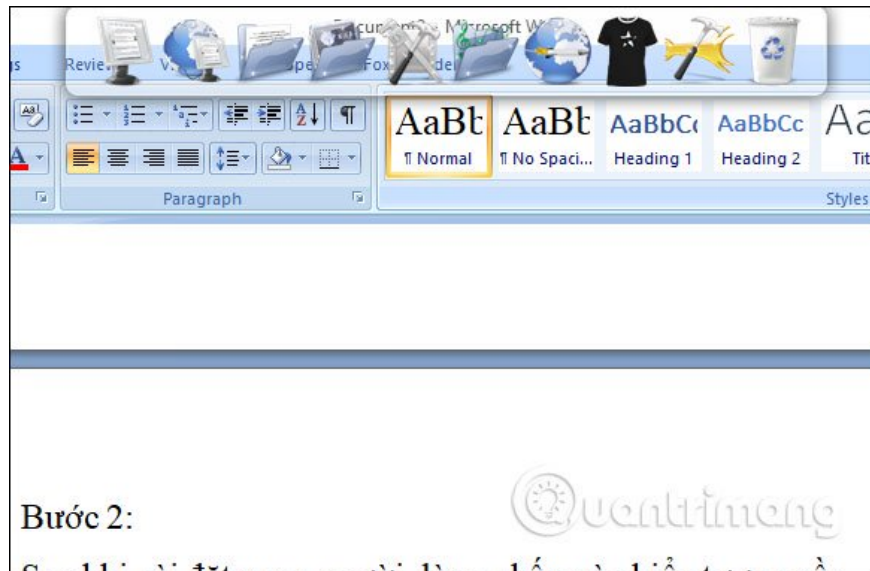


**Step 2:**

After installation is complete, click on **the software icon** on the computer and display the dock as shown below.



This dock will show up on every desktop interface on the computer, not just on the desktop.

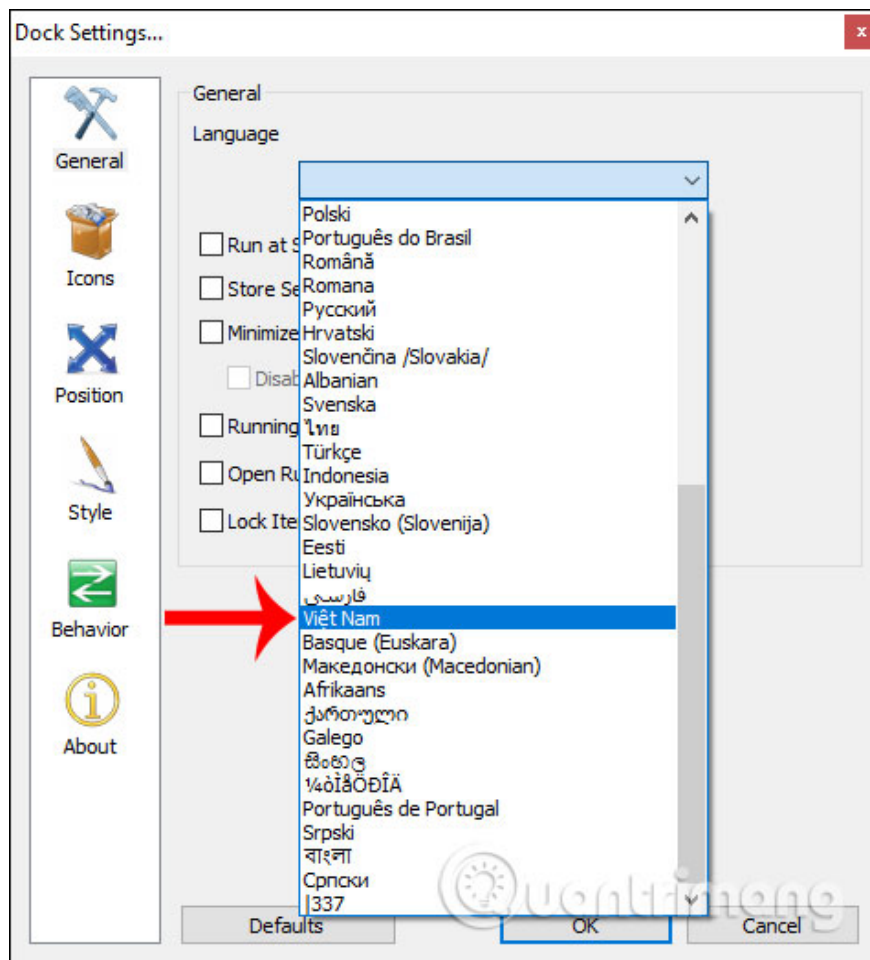


### Step 3:

To change the display style of the dock on Windows computers, users click on **the Dock Settings icon** .

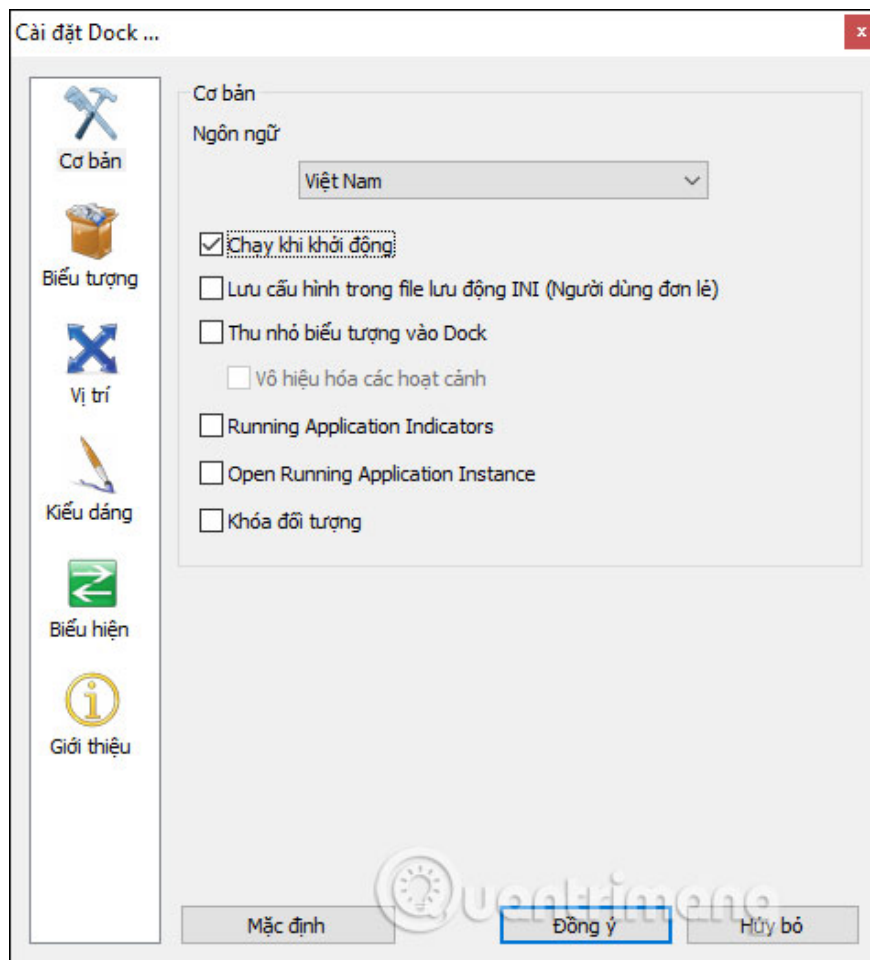


Display setup interface for the software. For simpler customization, users can switch to Vietnamese by clicking **Vietnam** in **the Language bar** in the **General** section. Click OK to save and then restart the Settings interface.

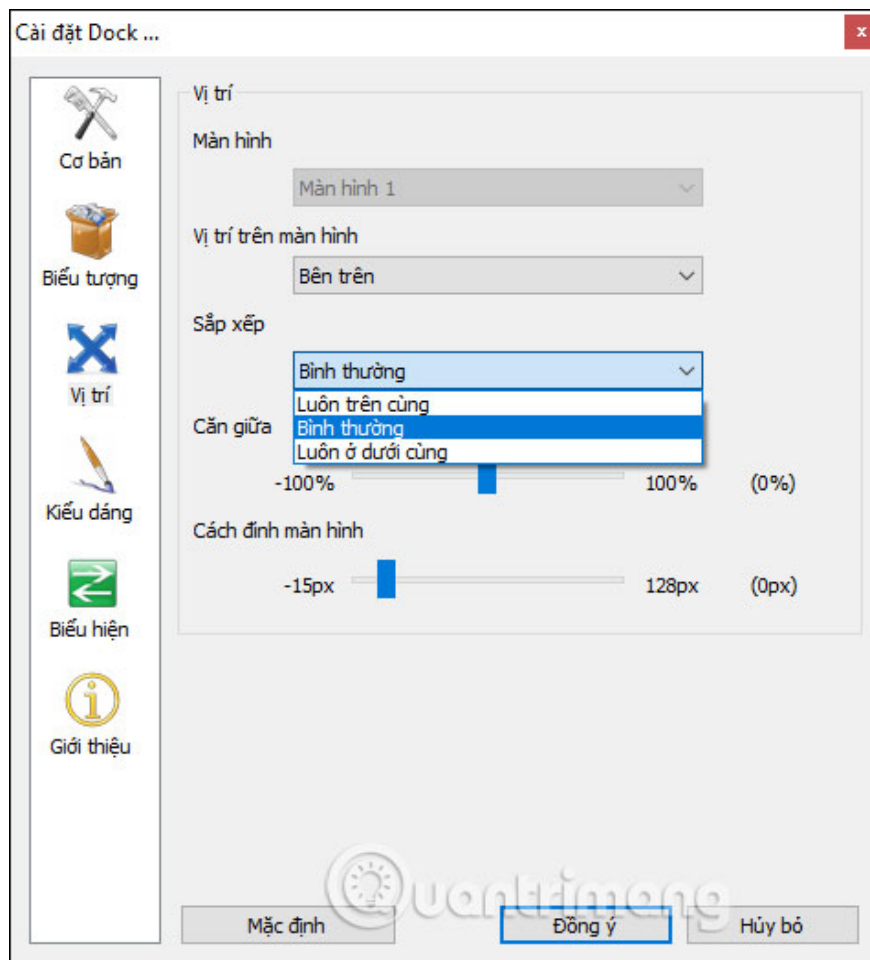


#### Step 4:

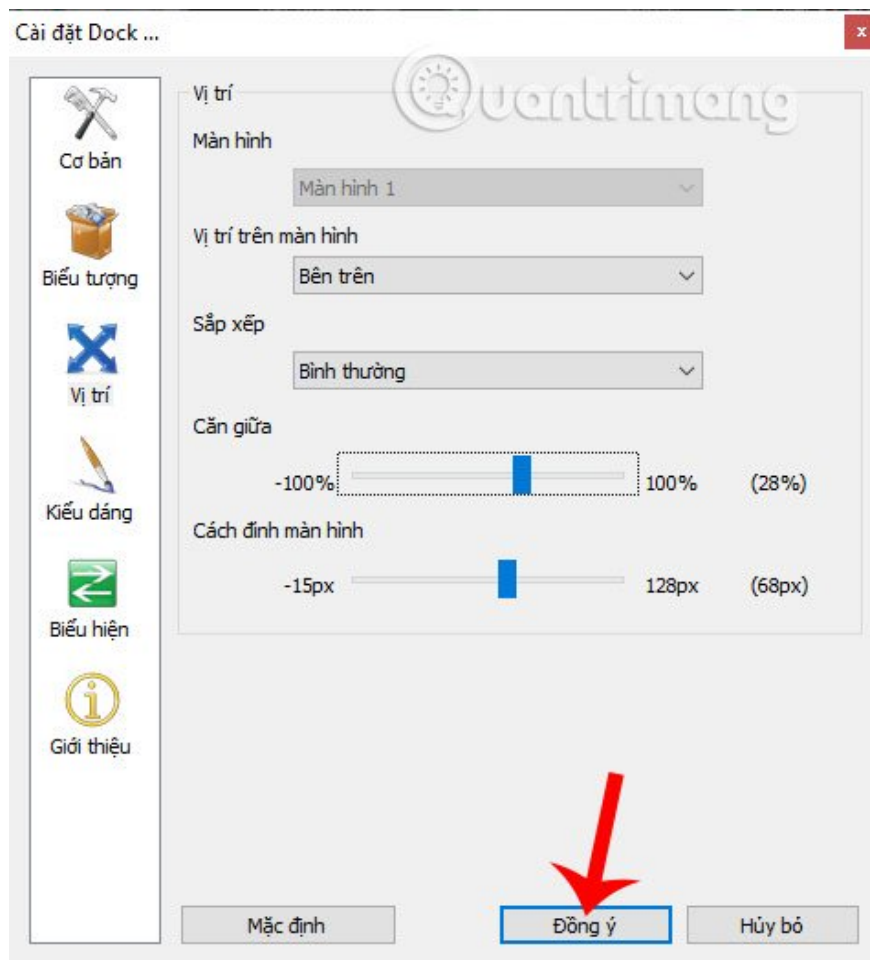
If we want **the dock to always show on the screen** then click **Run at startup** .



Next move to the **Location adjustment** group. Here you can adjust the display position of the task dock. The software supports displaying the dock bar in many different screens. At the **position on the screen** can choose on the top, bottom, left or right edge of the computer screen. The Dock is displayed by default on other programs. If you do not want it, switch to Normal mode at **Sort** .

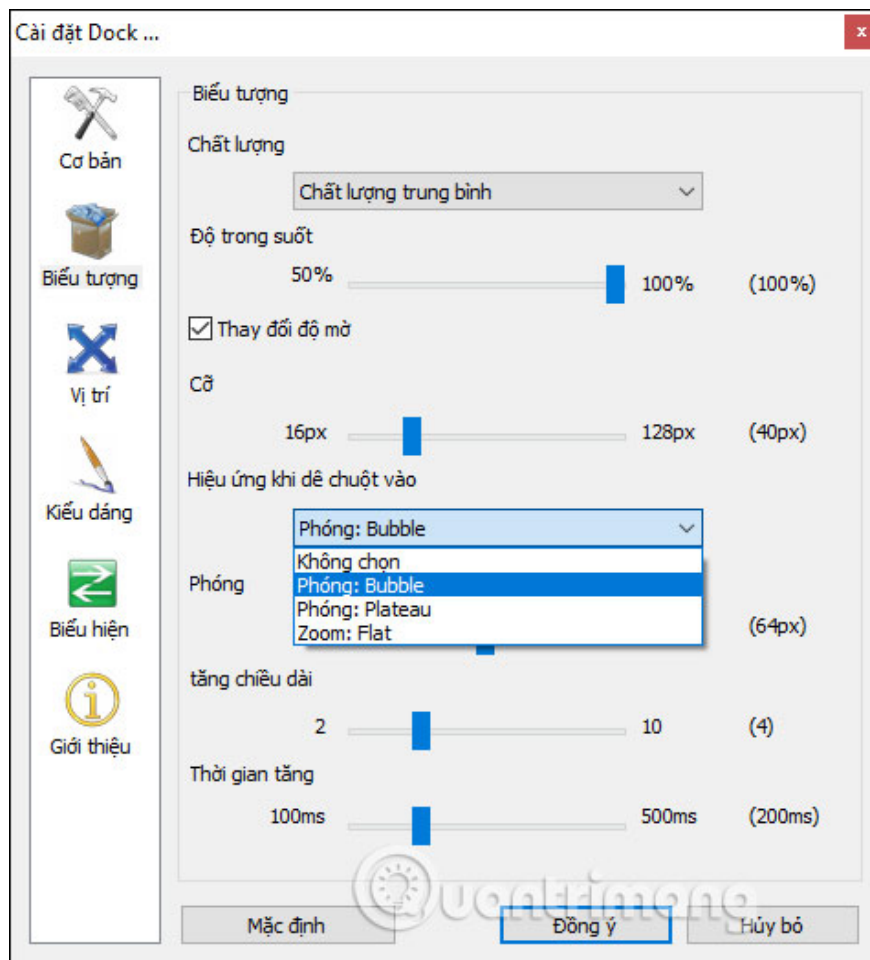


Below are two bars to **align the position in the middle of the screen** and the **distance to the screen edge** of the dock. When finished editing, click **Agree** below.



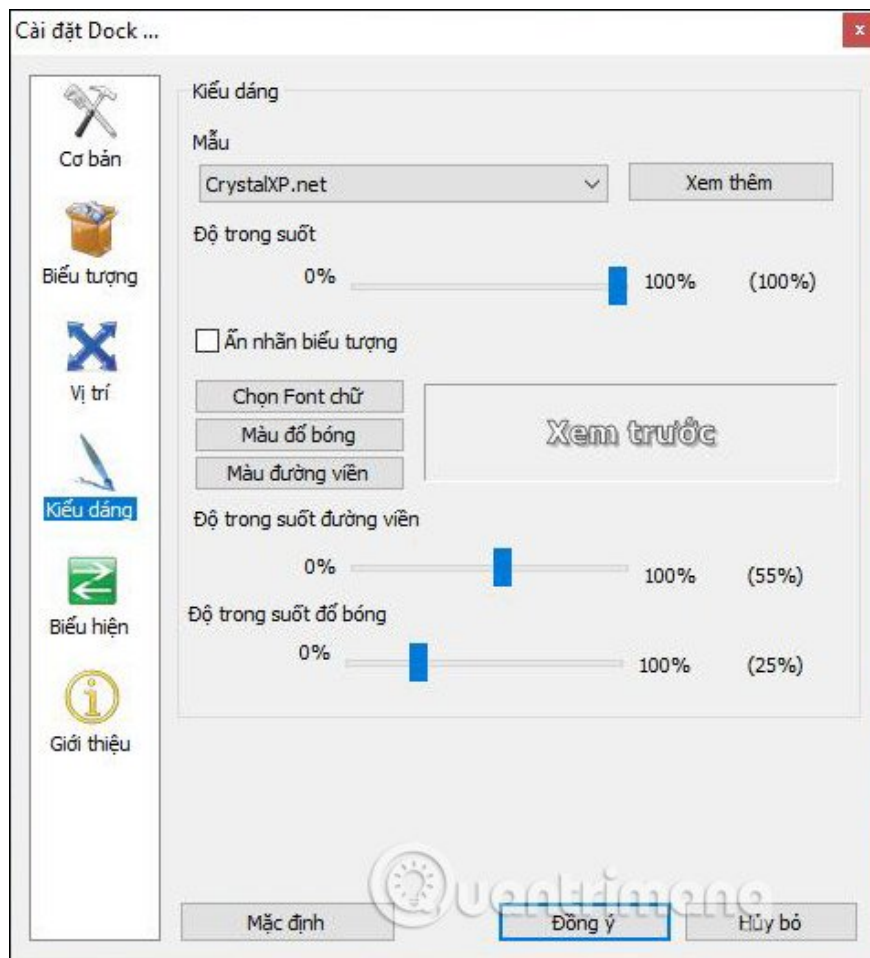
### Step 5:

Click on a few **groups of Icons** to adjust the appearance of the icons in the dock. Here we can change the quality and style of the icon display when hovered over.

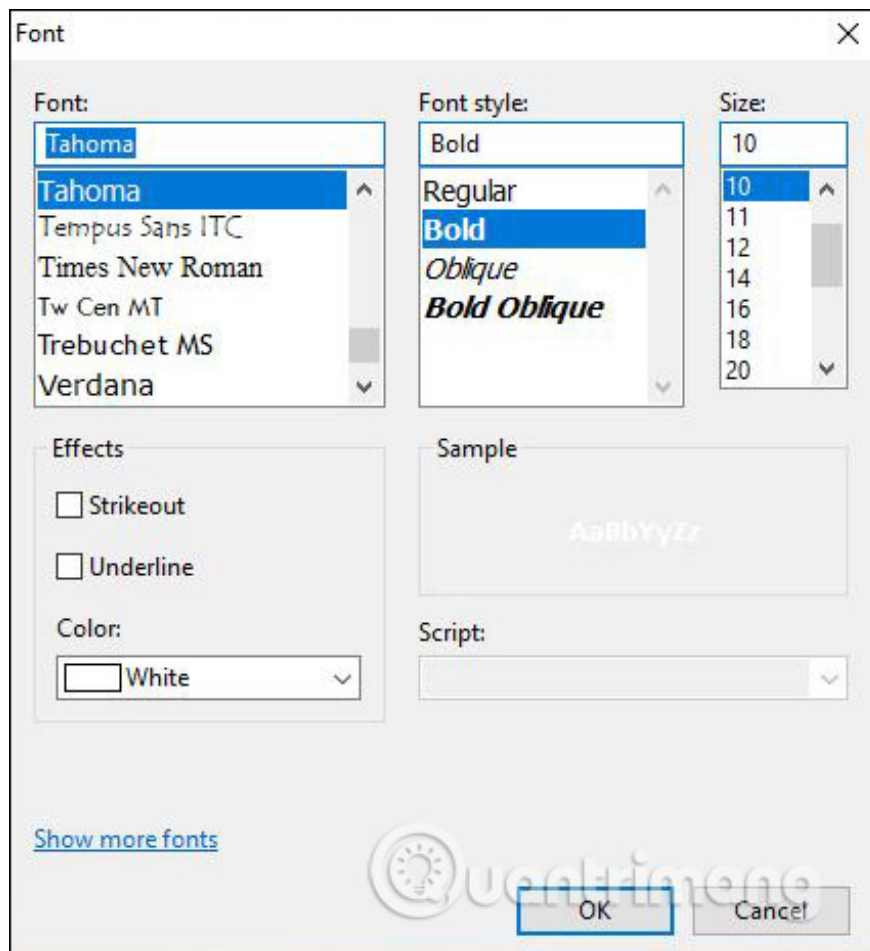


### Step 6:

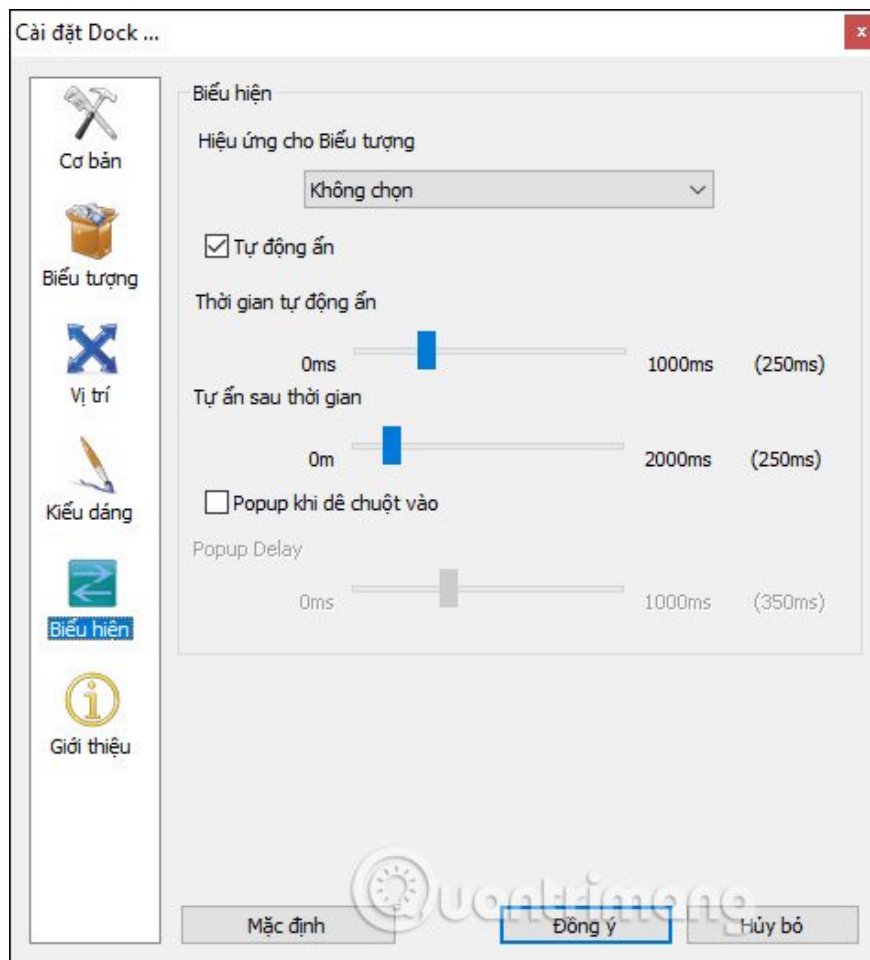
In **the Styles section**, we will have options to adjust the **appearance** of the dock, including templates, transparency, select display font, border transparency, shadow transparency.



The options for the display style of the text that the software provides are very diverse, for example, the Font section has quite a variety of fonts.



Finally, **the Expression tweaks** for the thank dock effects.



The result will be a new dock interface as shown below.



RocketDock software not only brings the macOS dock bar to the Windows computer interface, but also offers users a lot of different customizations. We can change the thank dock interface in various ways.

I wish you successful implementation!

You finished reading the article "**How to create a dock on Windows with RocketDock**" edited by the [TipsMake](#) team. We hope this article has provided you with many useful tech tips and tricks. You can search for

similar articles on tips and guides. Thank you for reading and for following us regularly.

---