

How to create a database in MS SQL Server

Ways to create user databases on MS SQL Server.

Database includes objects such as tables, processes, functions . In MS SQL Server there are two types of databases

1. System database
2. User database

System database

The system database (database) is automatically created when you install MS SQL Server. Below is a list of system databases:

1. Master
2. Model MSDB
3. Tempdb
4. Resource (available from 2005 version)
5. Distribution (only for Relication feature)

User database

User databases are created by users themselves (administrators, developers, testers . who have access to create databases). Here are the ways to create user databases.

Method 1 : Create a database using T-SQL Script or Restore Database

This is the basic syntax for creating databases in MS SQL Server:

```
Create database
```

Or

```
Restore Database from disk = '
```

For example:

To create a database named Testdb, run the following query:

```
Create database Testdb
```

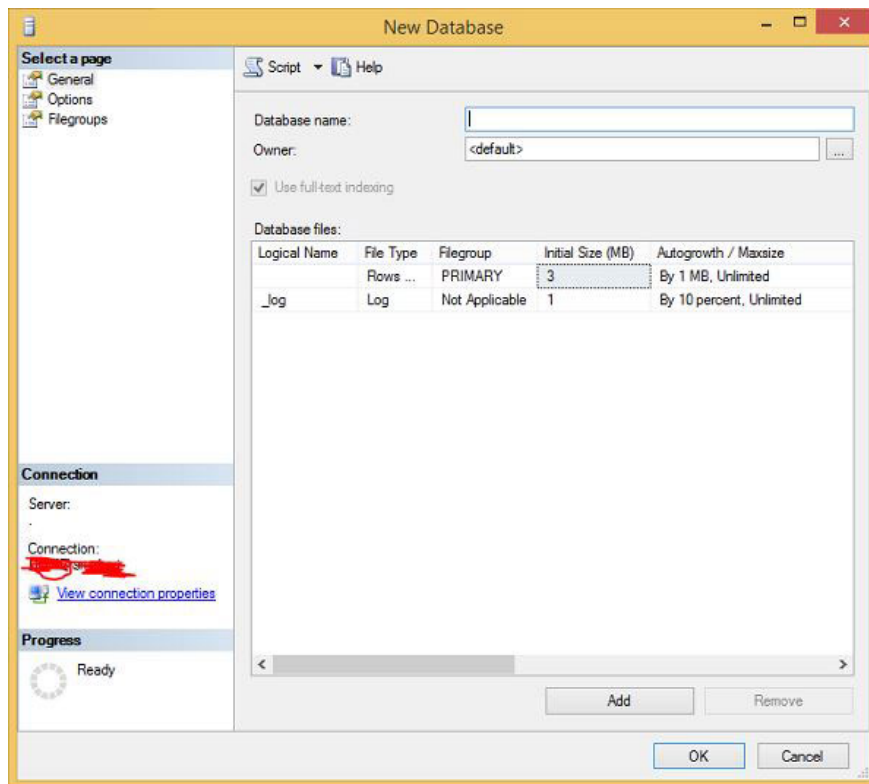
Or:

```
Restore database Testdb from disk = 'D:BackupTestdb_full_backup.bak'
```

Note that **D: backup** is where the backup file is saved and **Testdb_full_backup.bak** is the name of the backup file.

Method 2 : Create database using SQL Server Management Studio

Connect to the SQL Server installation and right-click the database folder. Click to create a new database and the screen below will appear.



The screen fills in the information for the newly created database

Enter the name of the CSLD (as in the example above is *Testdb*) and click **OK**. The *Testdb* database will be created as shown below.

