

How to copy images from AutoCAD to Word and Excel without errors

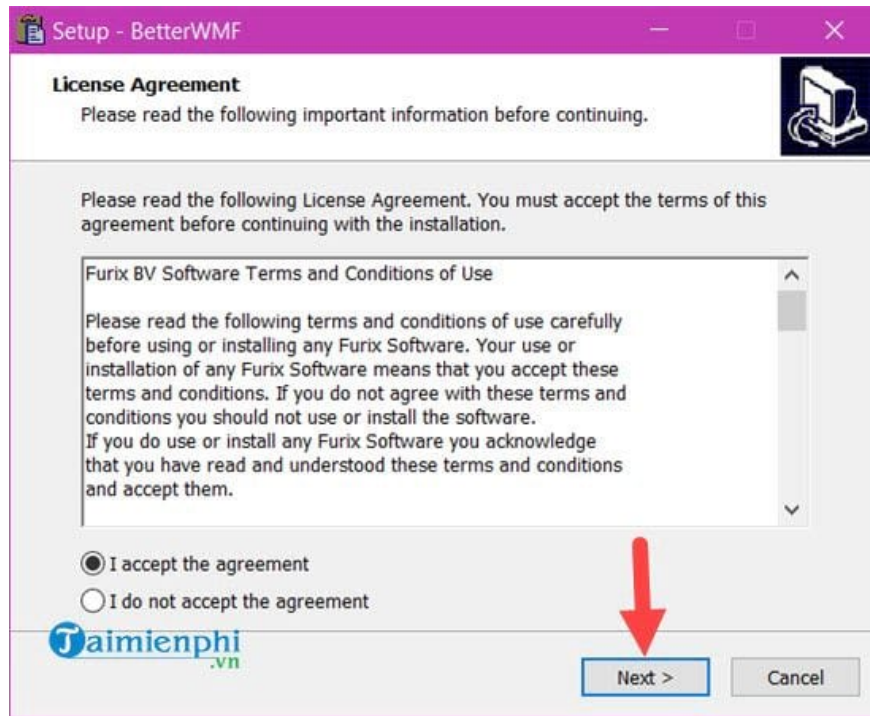
Copying images from AutoCAD to Word or Excel allows you to professionally insert technical drawings into your documents. However, many people encounter errors such as blurry images, missing details, or incorrect scale. In this article, we will explore how to copy images from AutoCAD while maintaining quality using BetterWMF or the CopyClip command.

Copying drawings from AutoCAD to Word or Excel often results in errors such as blurry lines or incorrect scale. This article from Tai Mien Phi will guide you on how to copy AutoCAD images while maintaining their quality using BetterWMF software or the CopyClip command.

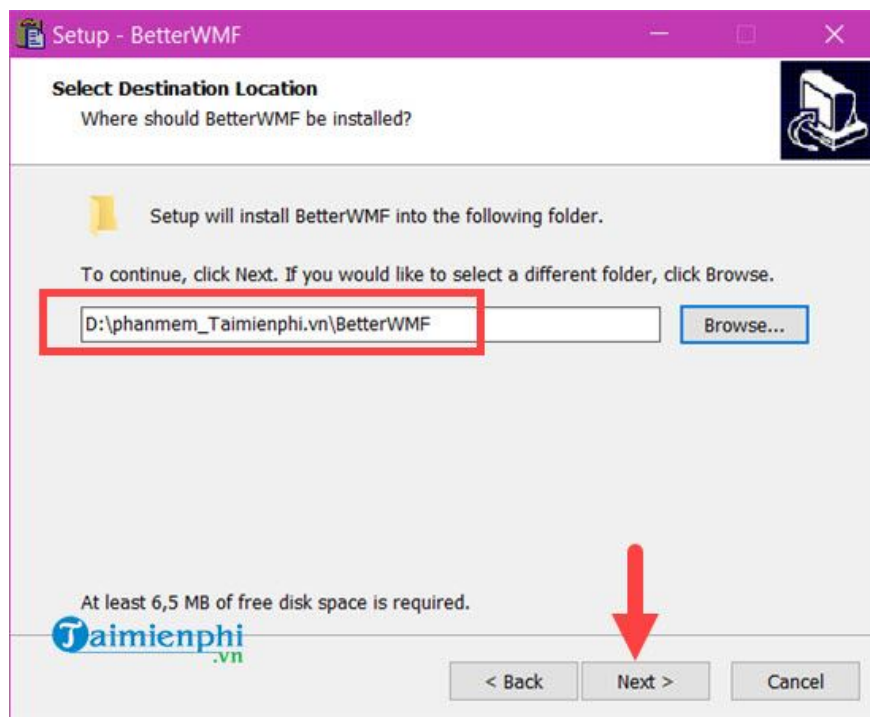
Instructions on how to copy images from AutoCAD to Word and Excel.

Step 1: Download BetterWMF to your computer.

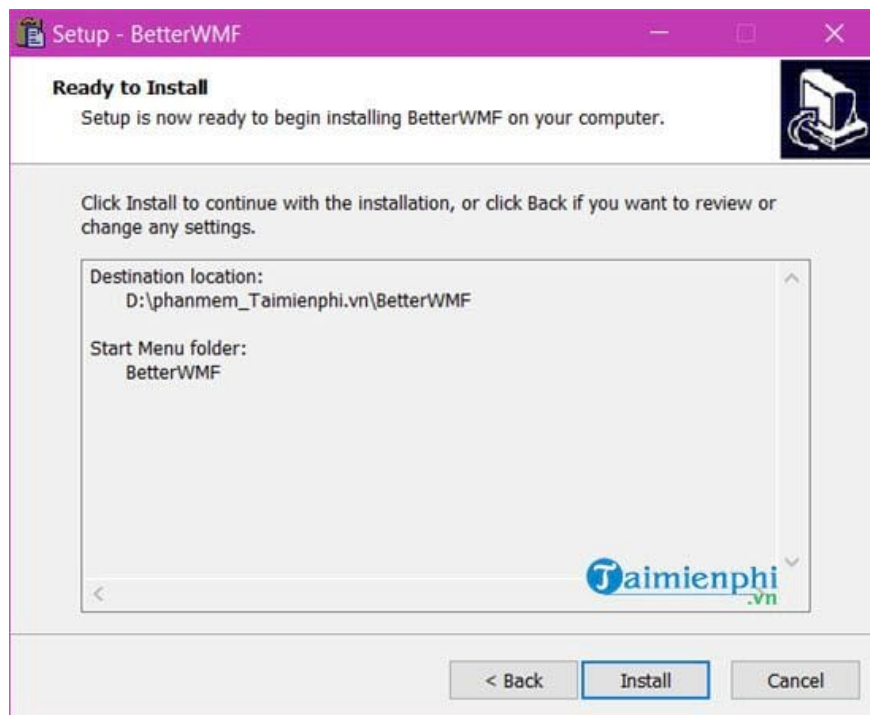
Step 2: Next, we proceed to install BetterWMF and agree to the terms and conditions contained within BetterWMF.



Step 3: Next, you choose the installation path for the BetterWMF software. If you're not too concerned about this, you can skip this step.



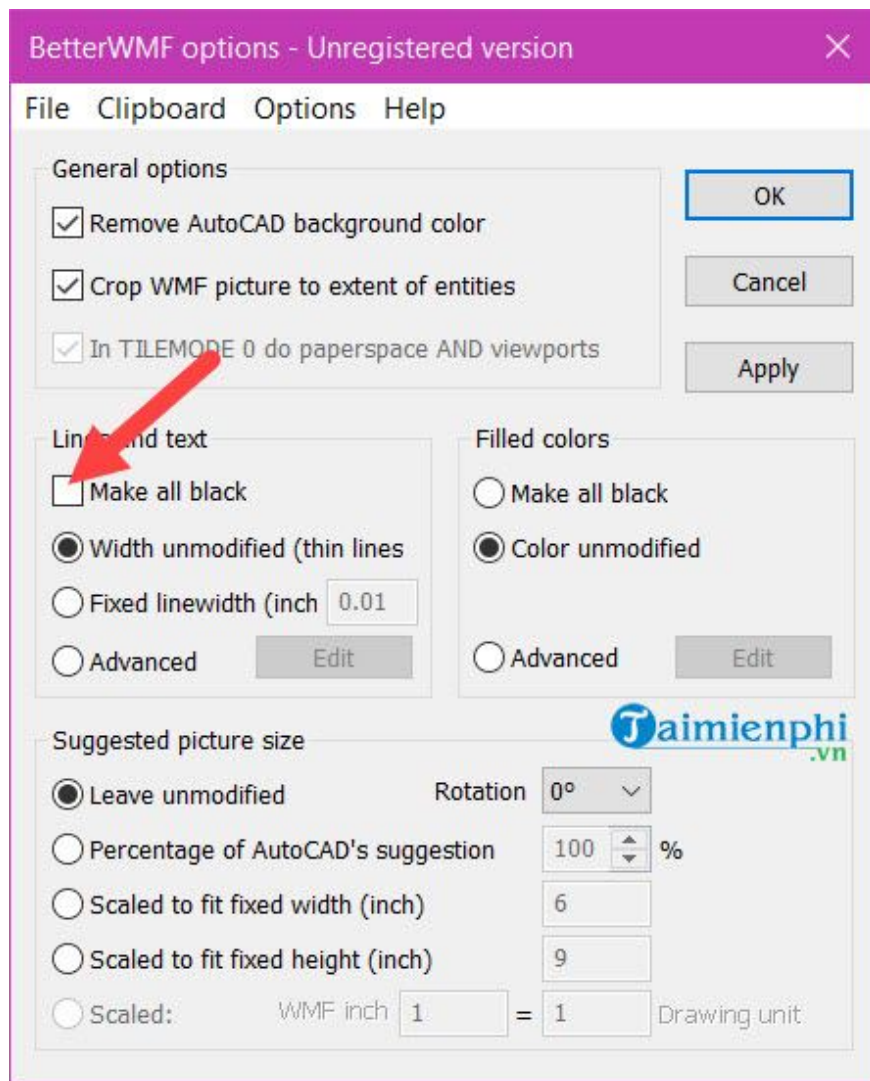
Finally, click **Install** to begin installing the software.



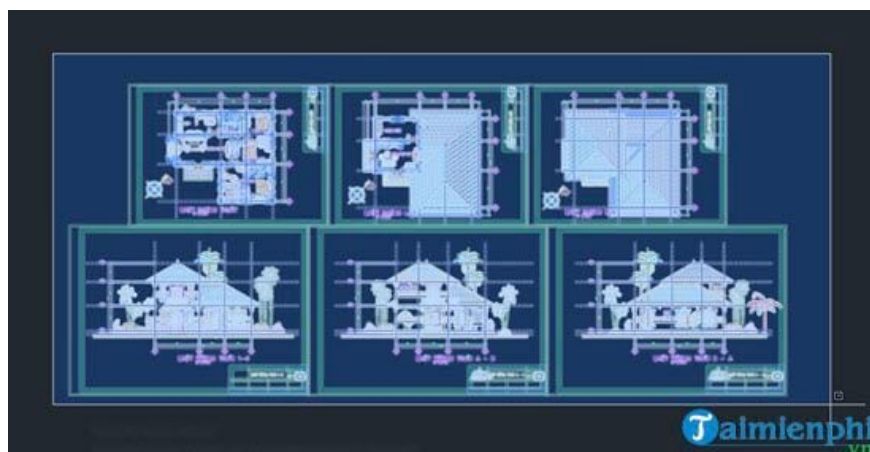
After the installation is complete, click **Finish** to open the software.



Step 4: Then open BetterWMF. Just make sure to check the "**Make all black**" option, then click **OK** and leave it at the bottom of the screen. We don't need to worry about it anymore.



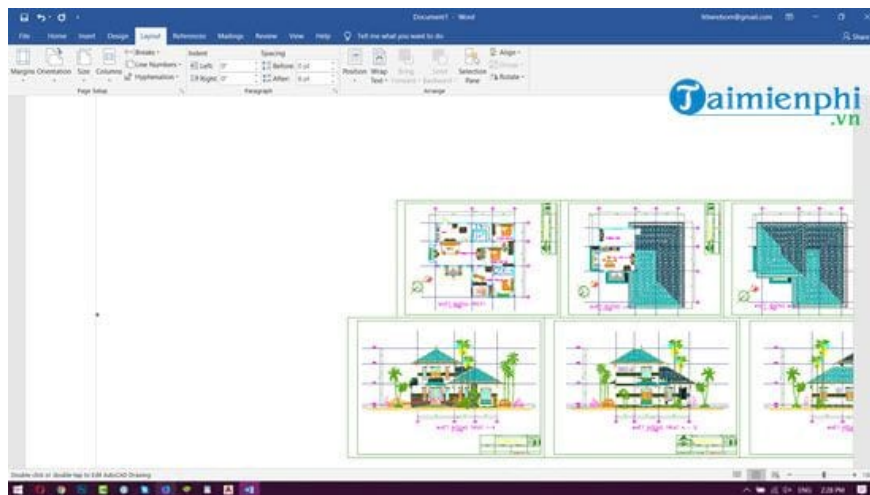
Step 5: Open any CAD file, select the object you want to select by clicking on it, and then press **Ctrl + C**.



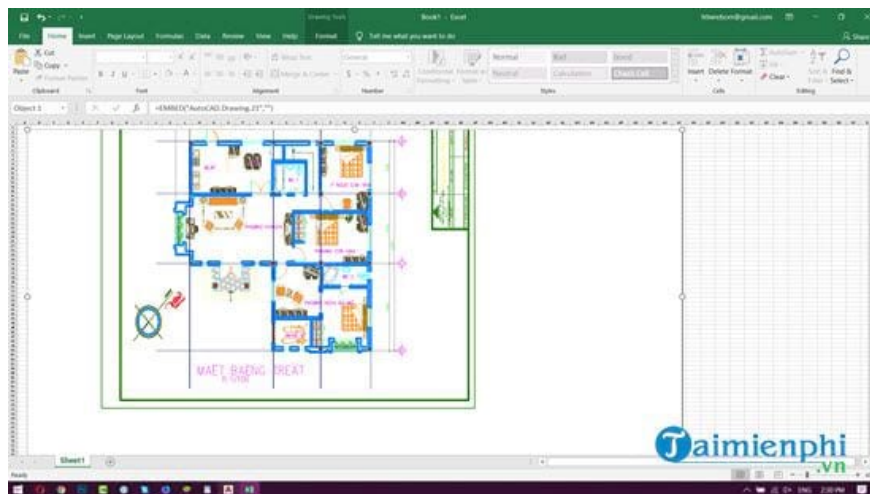
Step 6: Look down; if you see "Command:_copyclip xxx found," it means the Copy command was successful.



Step 7: Finally, simply paste it into Word using the **standard Ctrl + V** command .



Step 8: Apply the same steps to Excel and you will get the result shown below.



With BetterWMF, copying images from AutoCAD to Word or Excel becomes faster and simpler. This software

helps maintain image quality, avoiding blurring or scale inaccuracies. If you frequently work with technical drawings, this is a useful tool for presenting content professionally in reports or spreadsheets.

You finished reading the article "**How to copy images from AutoCAD to Word and Excel without errors**" edited by the [TipsMake](#) team. We hope this article has provided you with many useful tech tips and tricks. You can search for similar articles on tips and guides. Thank you for reading and for following us regularly.
