

How to convert MBR to GPT when installing Windows

Converting MBR to GPT during Windows installation is one of the steps users need to take to change the hard drive format to be compatible with newer operating systems like Windows 10. The following guide will help you do this quickly and efficiently, even if your computer had previous errors.

When installing a new Windows operating system on your computer, especially 64-bit versions, you may sometimes see the message " **Windows cannot be installed to this disk. The selected disk has an MBR partition table. On EFI systems, Windows can only be installed to a GPT disk**" during the drive selection step.



Convert MBR to GPT when installing Windows.

This error occurs when your computer is using a hard drive formatted as MBR, but the operating system requires the hard drive to be GPT. In this case, you will need to format the hard drive, **converting it from MBR to GPT**.

First, prepare a USB drive or Windows installation disc, connect it, and restart your computer. If installing Windows using a USB drive, on the first boot screen, use the shortcut key to access the Boot Options to go to the installation window.

Next, you select the settings when installing a new operating system as usual. When you reach the drive selection screen, follow these steps:

Step 1: Press **the Shift + F10** shortcut key combination to open the **Cmd** window .

```
Administrator: X:\windows\system32\cmd.exe
Microsoft Windows [Version 10.0.10586]
X:\Sources>diskpart
```

Step 2: Type the command **diskpart** and then press **Enter** .

```
Administrator: X:\windows\system32\cmd.exe - diskpart
DISK          - Display a list of disks. For example, LIST DISK.
PARTITION    - Display a list of partitions on the selected disk.
               For example, LIST PARTITION.
VOLUME       - Display a list of volumes. For example, LIST VOLUME.
VDISK        - Displays a list of virtual disks.
DISKPART> list disk
```

Step 3: Continue by typing the command `list disk` and pressing **Enter** .

In the list of hard drives, you will see the information of the hard drive connected to the device, which is named Disk 0, 1, 2,.. by default in the `Disk #####` column . For computers with multiple hard drives, you can only distinguish them by their capacity in the `Size` column . Additionally, hard drives formatted with GPT will be marked with an asterisk (*) in the `GPT` column , and vice versa.

```
Administrator: X:\windows\system32\cmd.exe - diskpart
VOLUME       - Display a list of volumes. For example, LIST VOLUME.
VDISK        - Displays a list of virtual disks.
DISKPART> list disk
Disk ###    Status         Size         Free         Dyn  Gpt
-----
Disk 0      Online         60 GB        60 GB
DISKPART>
```

Step 4: After identifying which hard drive needs to be converted from MBR to GPT, enter the command `select Disk [drive letter]` and press **Enter** . In this example, Taimienphi needs to convert the format for Disk 0.

```
Administrator: X:\windows\system32\cmd.exe - diskpart
VOLUME - Display a list of volumes. For example, LIST VOLUME.
VDISK - Displays a list of virtual disks.

DISKPART> list disk

Disk ### Status Size Free Dyn Gpt
-----
Disk 0 Online 60 GB 60 GB

DISKPART> select Disk 0
```

Step 5: Next, enter the command `clean` and press **Enter** to delete all data.

```
Administrator: X:\windows\system32\cmd.exe - diskpart

Disk ### Status Size Free Dyn Gpt
-----
Disk 0 Online 60 GB 60 GB

DISKPART> select Disk 0
Disk 0 is now the selected disk.

DISKPART> clean
DiskPart succeeded in cleaning the disk.

DISKPART>
```

Step 6: Type the command `convert GPT`. Press **Enter** to begin the hard drive format conversion process.

```
Administrator: X:\windows\system32\cmd.exe - diskpart

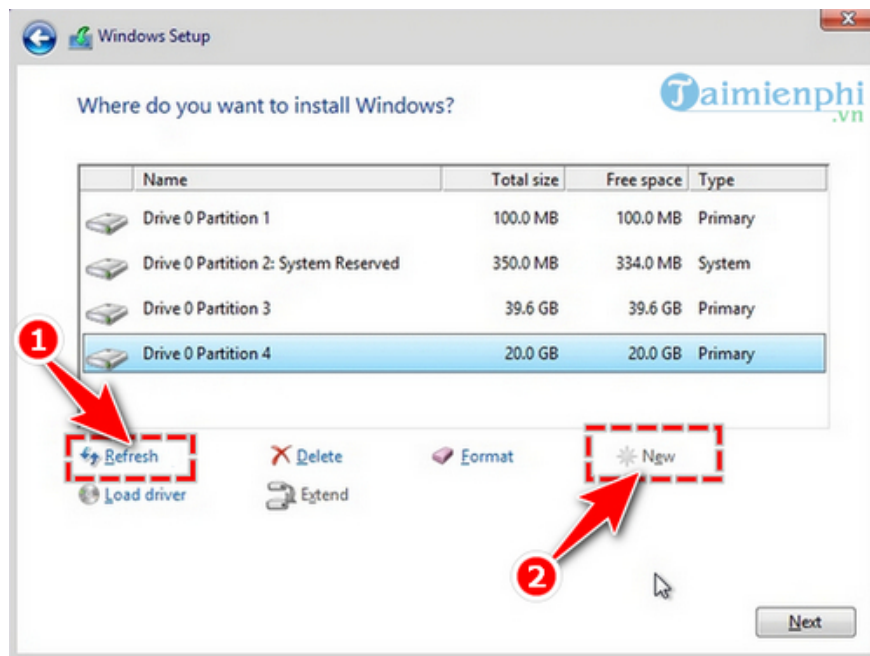
DISKPART> select Disk 0
Disk 0 is now the selected disk.

DISKPART> clean
DiskPart succeeded in cleaning the disk.

DISKPART> convert GPT
DiskPart successfully converted the selected disk to GPT format.

DISKPART>
```

After the conversion process is complete, return to the **Windows Setup** screen, click the **Refresh** button to update again. Click **New** to re-partition the hard drive and continue the installation as usual.



So, Taimienphi has finished guiding you through the steps to convert MBR to GPT directly on the Windows installation screen. With this simple trick, you won't need to install or use any complicated tools, and you can still convert your hard drive format quickly and efficiently as desired.

You finished reading the article "**How to convert MBR to GPT when installing Windows**" edited by the [TipsMake](#) team. We hope this article has provided you with many useful tech tips and tricks. You can search for similar articles on tips and guides. Thank you for reading and for following us regularly.