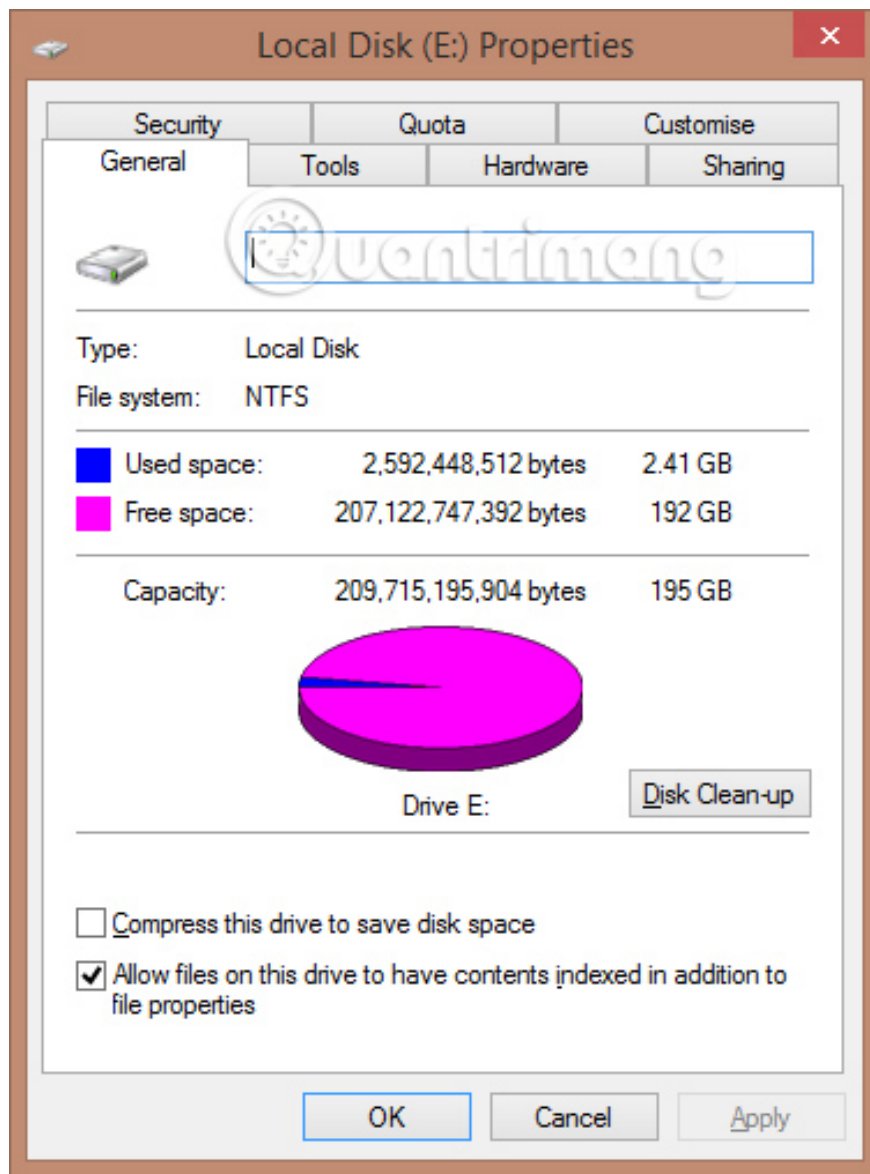


# How to convert a FAT32 hard drive to NTFS on Windows does not lose data

FAT32 and NTFS are two familiar formats of a partition, hard drive, or any storage device connected to a Windows computer. And NTFS format is chosen for more use because of some of its modern features.

When formatting a partition, hard drive, or any storage device on a Windows computer, you will be able to choose the file system as NTFS, FAT32 or exFAT. Selecting this format will affect the data storage as well as use. And with the modern features of NTFS such as creating copies for backup, encryption, easy to fix when the computer crash, . there are quite a lot of people choose NTFS format from the beginning.

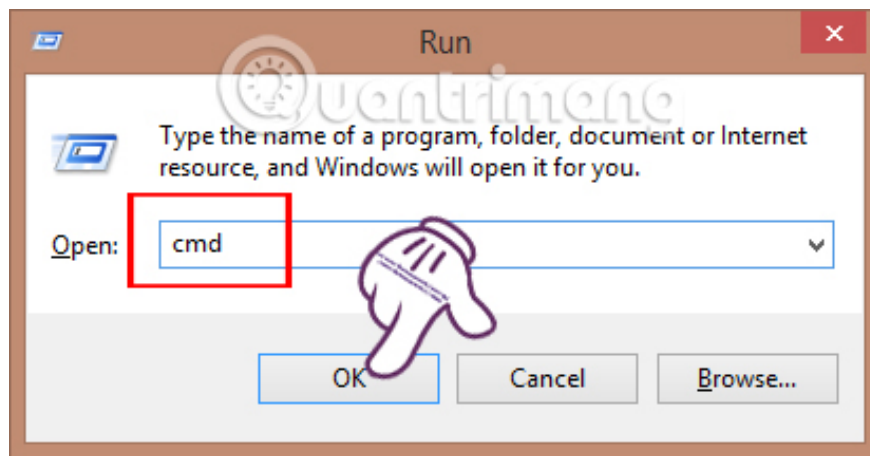
If you want to convert from FAT32 hard drive format to NTFS, it is not difficult. In this article, we will show you how to convert from FAT32 to NTFS without losing data. Note, in cases where the computer does not appear the Security tab in the Properties of a file or folder, you can also do this to fix it.



To transfer FAT32 to NTFS, we will use the command command available in Windows.

## Step 1:

First of all, press the **Windows + R** key combination to open the **Run** window. Here, we will enter the **cmd** keyword and click **OK** to access the Command Prompt.



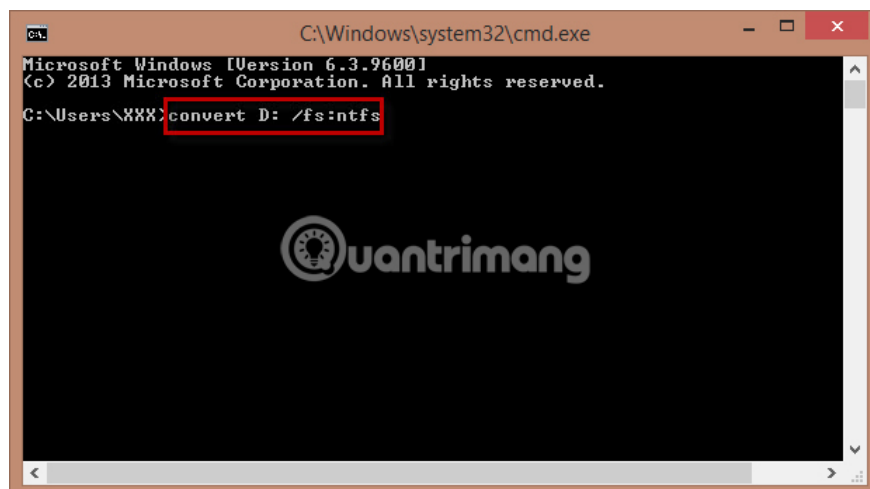
## Step 2:

At the **Command Prompt** window interface, we will type the following command:

```
convert: / fs: ntfs
```

In it, is the **drive you want to transfer** . For example, if I want to **transfer the D drive from FAT32 to NTFS** , there will be the following complete command:

```
convert D: / fs: ntfs
```



## Step 3:

Soon, the computer will start the conversion work.

Next, you will get the message: **The type of the system is FAT file. Hãy nh?p th? m?c hi?n th?i hi?n th?i cho máy D:**

Then, **type the name of the drive (not the drive letter) that you want to convert from FAT32 to NTFS** to determine which drive to transfer again.

Finally, there will be announcements. You just need to **press YES twice** and the **Conversion complete** message will be displayed and you have completed all the process of converting the hard drive to NTFS format.

To make sure the conversion process is successful, you need to **restart the computer** . After the machine boots, the hard drive will be converted to NTFS format.

The above is step by step convert the hard drive format from FAT32 format to NTFS format. How to do it is very simple, just through the command command available on the computer only. You need to remember after you have done this, restart the computer for the changes to take effect.

### **Refer to the following articles:**

1. Instructions to divide and merge drives right in Windows 7
1. How is GPT and MBR different when partitioning a drive?
1. Hiren's USB creation guide is quick

### **I wish you all success!**

You finished reading the article "**How to convert a FAT32 hard drive to NTFS on Windows does not lose data**" edited by the [TipsMake](#) team. We hope this article has provided you with many useful tech tips and tricks. You can search for similar articles on tips and guides. Thank you for reading and for following us regularly.