

# How to control a computer remotely using Teamviewer

TeamViewer is software that supports remote computer control, screen sharing, etc. If you are new to this tool and don't know much about its functions, as well as how to control a computer remotely using TeamViewer, you can refer to the instructions in the article below.

This guide **on controlling a computer remotely using TeamViewer** will help new users get acquainted with and operate the software more easily, learn how to utilize the tool's features to control computers remotely, send files quickly, and ensure absolute security.



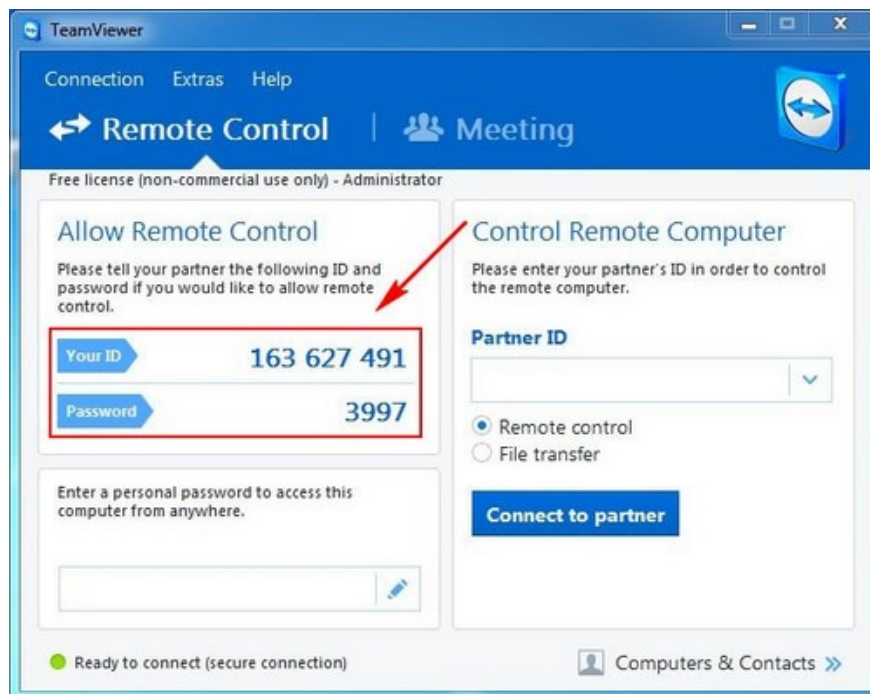
Instructions for controlling a computer remotely using TeamViewer

## *How to control a computer remotely using TeamViewer*

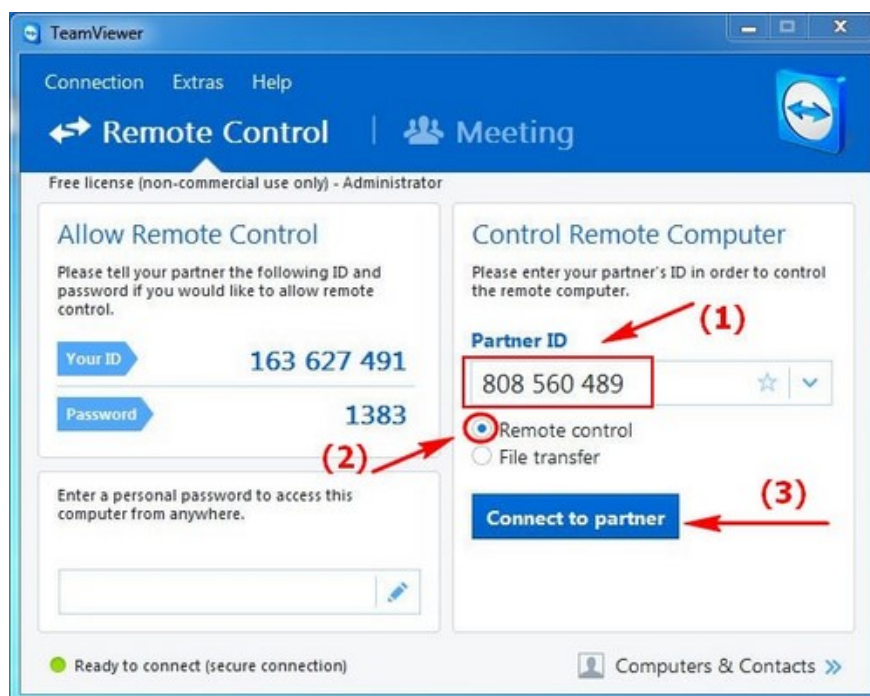
For those new to TeamViewer remote computer control software, connecting might be a bit difficult. Therefore, to better understand how to use TeamViewer, readers can follow the instructions below from Taimienphi to use the software more easily.

*Step 1* : Open TeamViewer. On the main interface, you will see two lines: **Your ID** and **Password**, as shown in the image below.

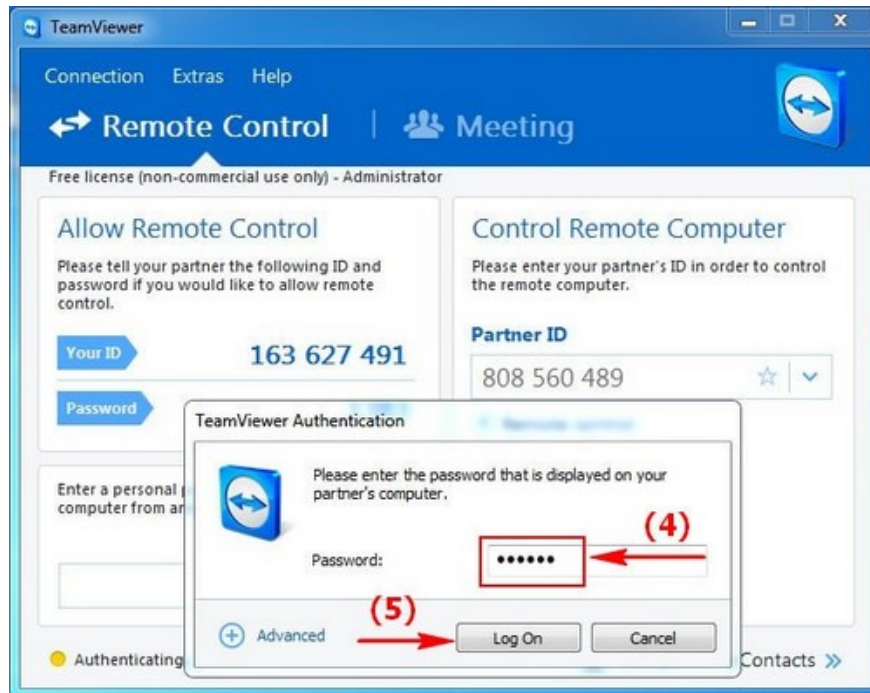
- **You just need to send the TeamViewer ID and password** to the other party . Conversely, if you want to access someone else's computer, they must also send the same information.



*Step 2:* As mentioned in **Step 1** , when the user receives **the ID** from the computer they want to access, enter **the ID** in the **Partner ID** field => select **Remote control** => click **Connect to partner** .



- Next, enter **the password** from the computer using TeamViewer that you want to access => click **Log On** .



*Step 3:* Once completed, the results of **remote computer control using TeamViewer** will be displayed as shown below.



## ***Notes on controlling a computer remotely using TeamViewer***

When remotely controlling a computer using TeamViewer, you need to pay attention to the following points to have the best connection experience.

- The user has installed TeamViewer on both PC devices.
- Only share your TeamViewer ID and password with people you trust.

- Monitor connection activity to prevent abnormal situations on your PC or laptop.
- Ensure you are using a stable internet connection for a smooth remote connection process.

Remember to disconnect after you've finished your work.

## *Other software for remote computer control*

Besides TeamViewer, there are many other remote computer control software programs such as UltraViewer, AnyDesk, etc. These are all excellent tools that help you connect to computers remotely, with the ability to securely transmit data, incredible performance, and are very easy to use.

=> Download the latest version of **UltraViewer** here.

=> Download the latest version of **AnyDesk** here.

It's really simple to control a computer remotely using TeamViewer, isn't it? Through the instructions above, readers can easily connect and transfer data from their own computer to another computer. Additionally, users can **enable TeamViewer's automatic startup with Windows feature** for more efficient use of the software anywhere.

Readers should also not miss **the interesting features of TeamViewer** that TipsMake introduced in the previous tutorial, which help users use the tool more easily than ever before, while saving connection time.

You finished reading the article "**How to control a computer remotely using Teamviewer**" edited by the [TipsMake](#) team. We hope this article has provided you with many useful tech tips and tricks. You can search for similar articles on tips and guides. Thank you for reading and for following us regularly.