

How to Connect Xbox 360 Wired Controller to PC Windows 8

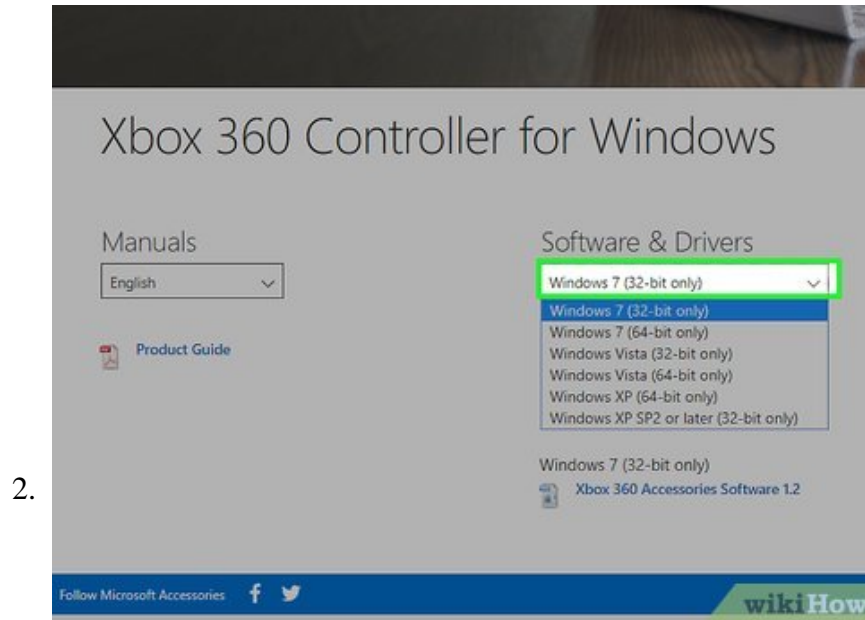
This wikiHow teaches you how to connect a wired Xbox 360 controller to your Windows 8 PC. In order for this process to work, you must be using a hardwired Xbox 360 controller; the USB charge-and-play cable that you can plug into wireless...

Part 1 of 2:

Downloading the Drivers



Open the Xbox 360 controller drivers page. From here, download the drivers from the "Download" section. These drivers will make your Xbox 360 controller work with Windows 8's operating system.



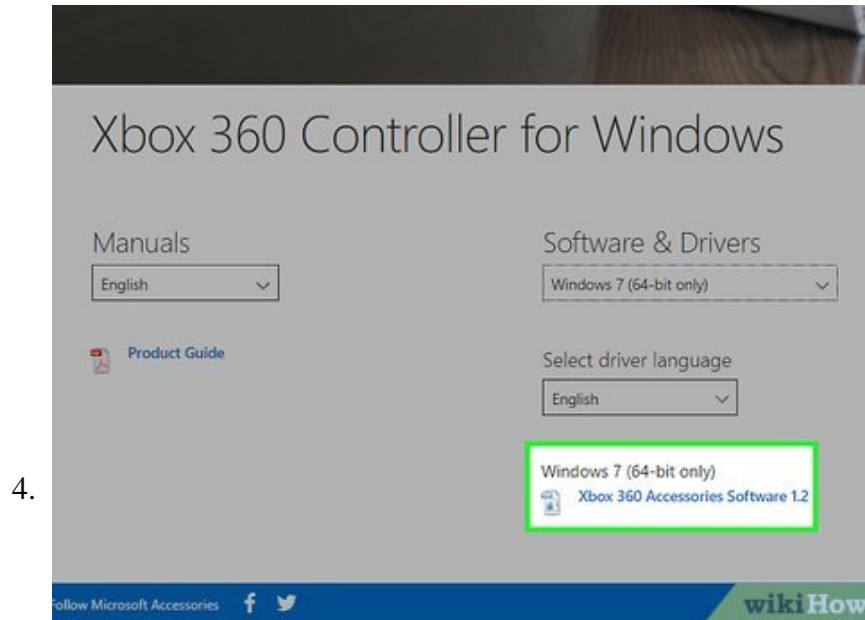
Click the box beneath the "Software & Drivers" heading. Doing so will prompt a drop-down menu with all of the available drivers for the Xbox 360 controller. You'll see two Windows 7 options here: "32-bit only" and "64-bit only".

1. If the page doesn't scroll down automatically, first scroll down to below the "Free Shipping. Free Returns" banner and click **Download** on the right side of the page.



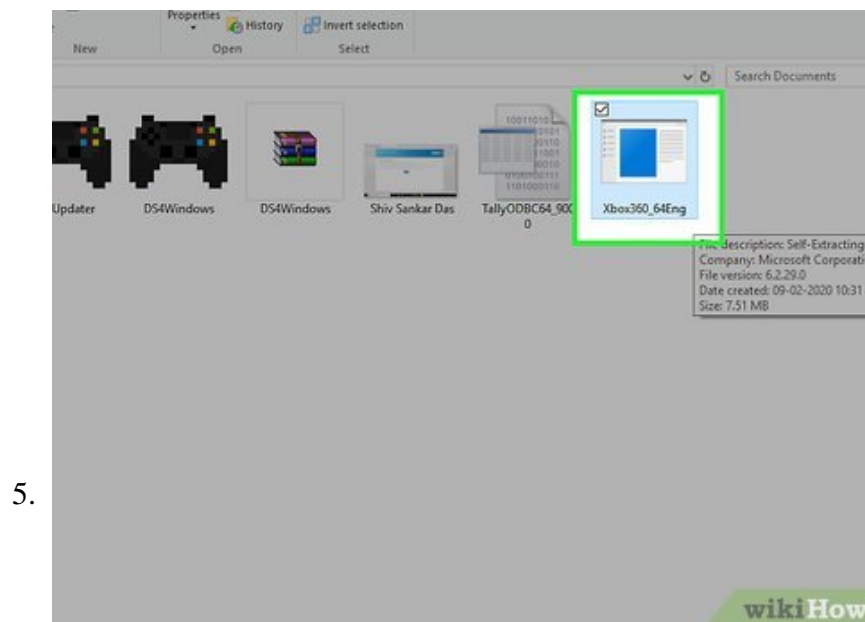
Click a Windows 7 option. Since the Xbox 360 controller doesn't have Windows 8 drivers available, you'll use the Windows 7 drivers that correspond to your version of Windows (32-bit or 64-bit).

1. If you aren't sure of your operating system's bit count, you can check your version of Windows.



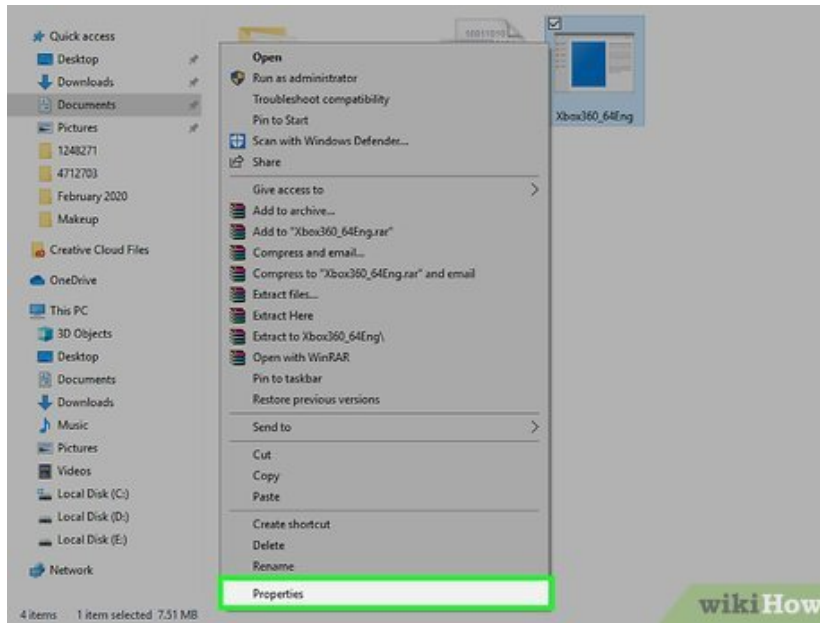
Click the download link. It's below the box with your drivers' information; the link will say something like "Xbox 360 Accessories Software 1.2". Once you click the link, the drivers file will begin to download.

1. Depending on your browser, you may first need to select a download location.



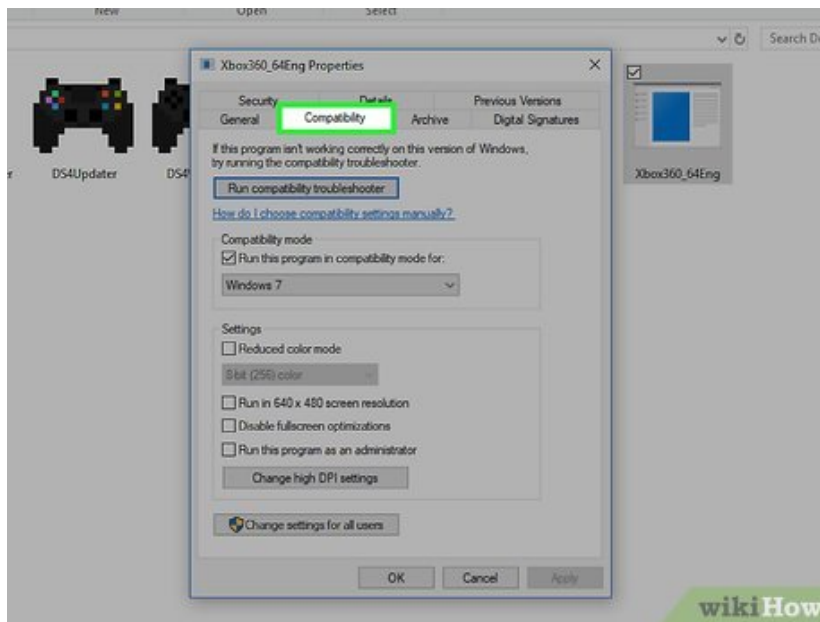
Right-click the setup file. You'll find the file in your computer's default downloads location (e.g., the desktop). The file should be named "Xbox360_[bit number]Eng" where "[bit number]" is "32" or "64" depending on your operating system version.

6.



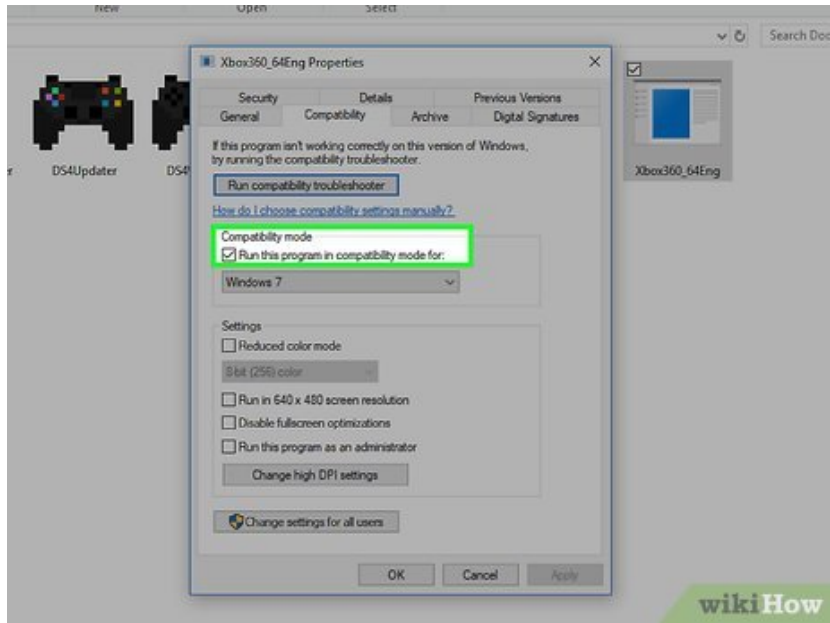
Click **Properties**. It's at the bottom of the drop-down menu.

7.



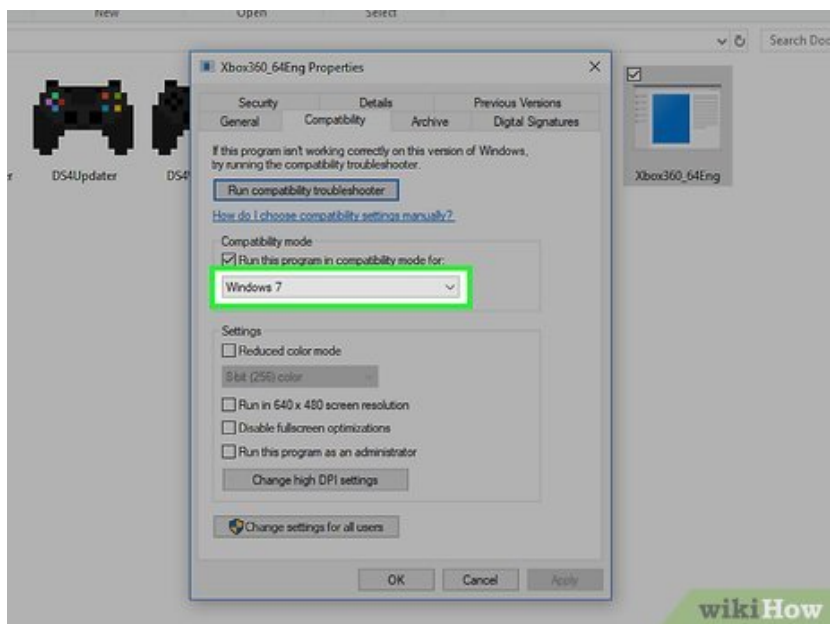
Click the **Compatibility** tab. You'll see this option at the top of the "Properties" window.

8.



Check the box next to "Run this program in compatibility mode for:". This text is beneath the "Compatibility mode" heading.

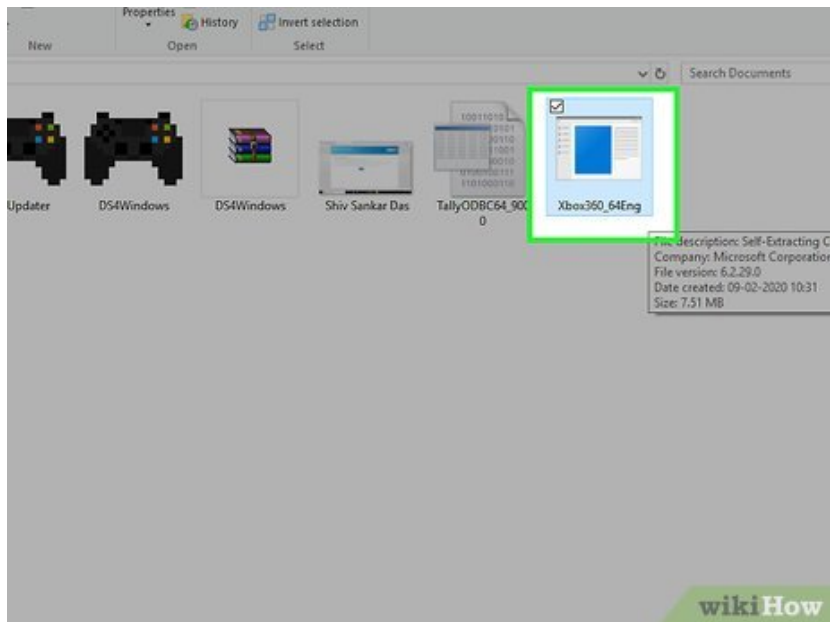
9.



Click the operating system box. It's below the "Run this program in compatibility mode for:" text.

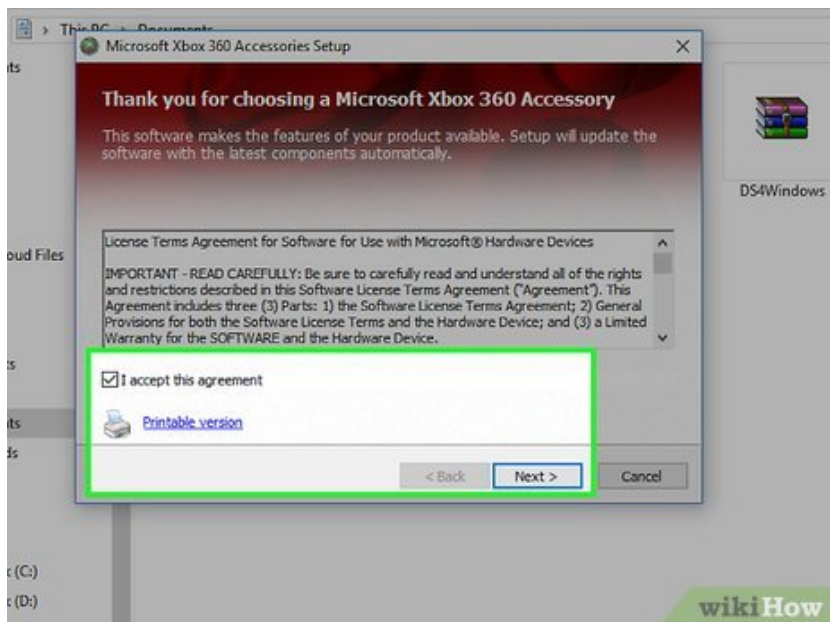
1. If you've never used compatibility mode before, this box will likely say "Window XP" or something similar.

12.



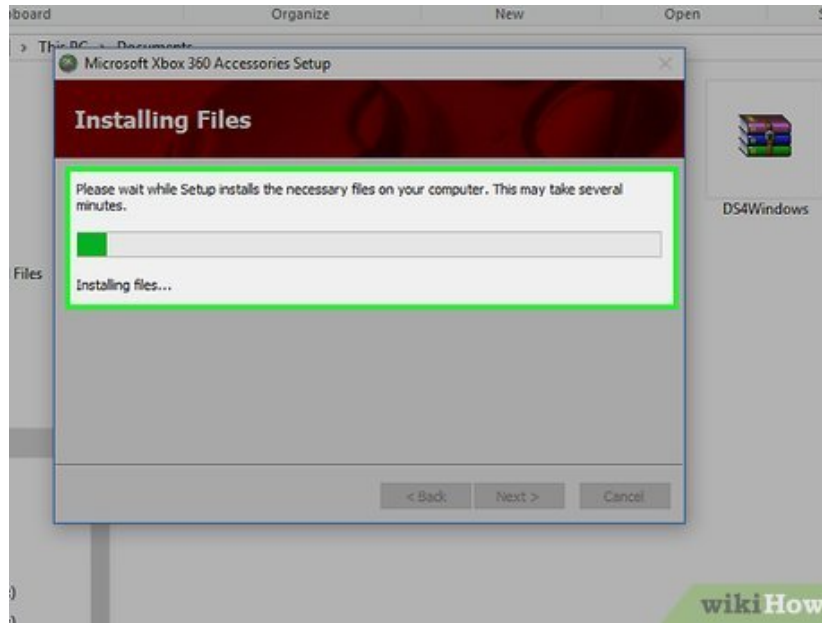
Double-click the setup file. Doing so will launch the setup window.

13.



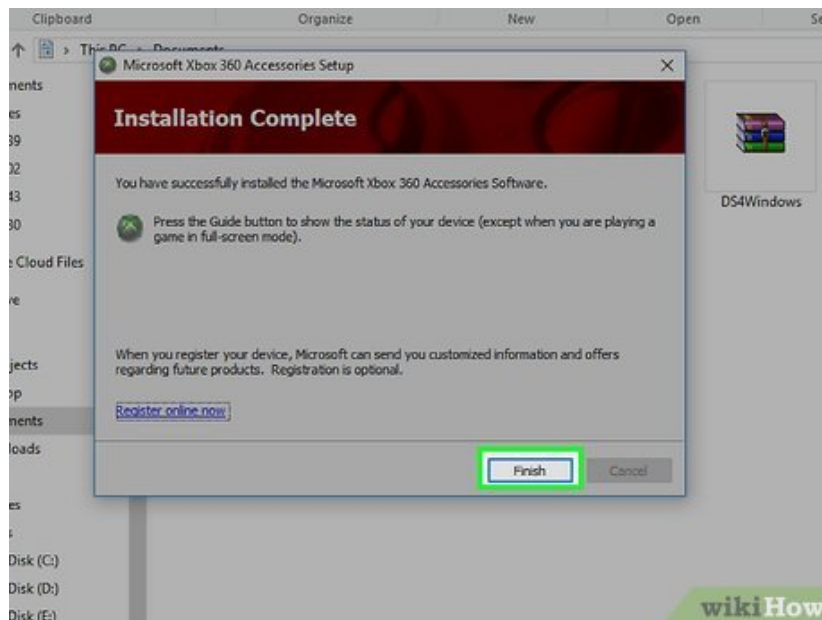
Follow the on-screen instructions. You'll likely need to click **Yes** when prompted to allow the setup file access to your computer, after which you'll simply check the "I agree" box on the "Terms and Conditions" page and then click **Next** to begin installing the drivers.

14.



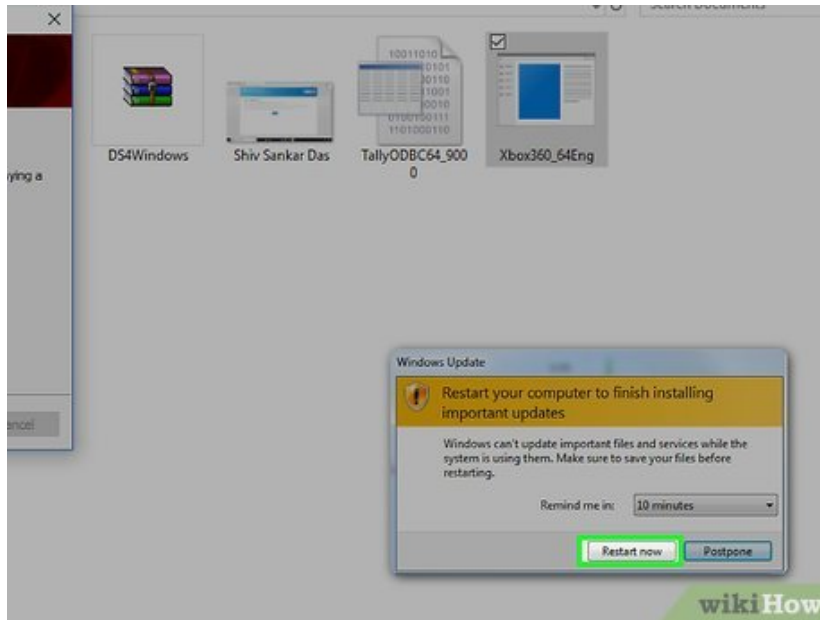
Wait for the drivers to finish installing. This process will likely take several minutes.

15.



Click Finish. It's in the bottom-right corner of the setup window. Doing so will complete the drivers' installation, though you'll need to restart your computer in order for them to work properly.

16.



Click **Yes** to restart the computer. You'll see this pop up in a window; clicking it will restart your computer and ensure that your Xbox 360 controller's drivers are properly integrated.

1. Make sure you save any open work before restarting your computer.

Part 2 of 2:

Connecting the Controller

1.



Plug your controller into your computer. Do so by plugging the narrow end of the controller's USB charging cable into the controller and the large end of the USB cable into one of your computer's USB ports.

1. USB port locations vary depending on the type of computer you're using. If you can't locate the USB ports, check the sides or the back of your computer's CPU (desktop) or the back of the casing (laptop).

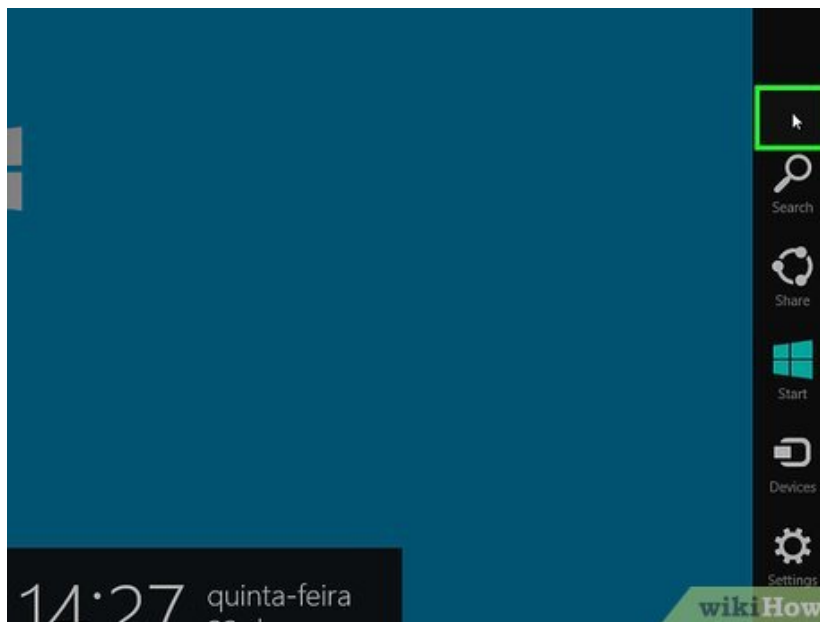
2.



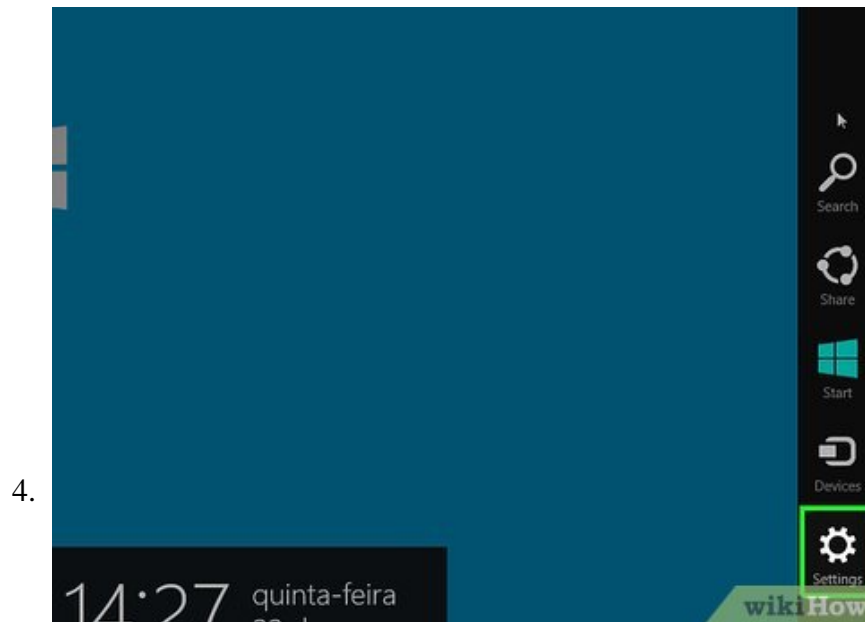
Press the Xbox button. It's the large, circular X button in the middle of the controller. Doing so will turn on your controller.

1. If prompted, first click **Yes** when asked if you trust the device.

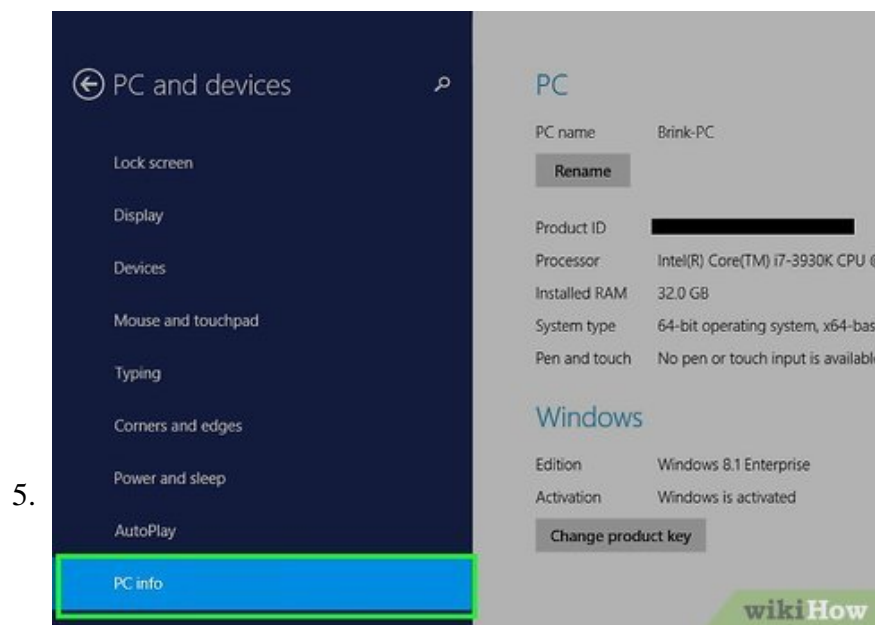
3.



Place your mouse cursor in the top-right corner of the screen. After a second, you'll see a column pop out.

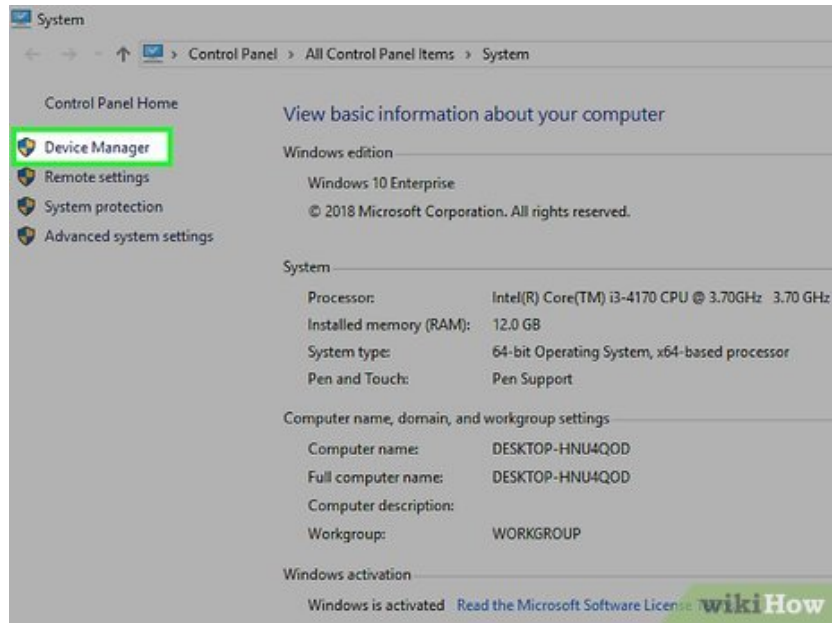


Click **Settings**. It's at the bottom of the column on the right side of the screen.



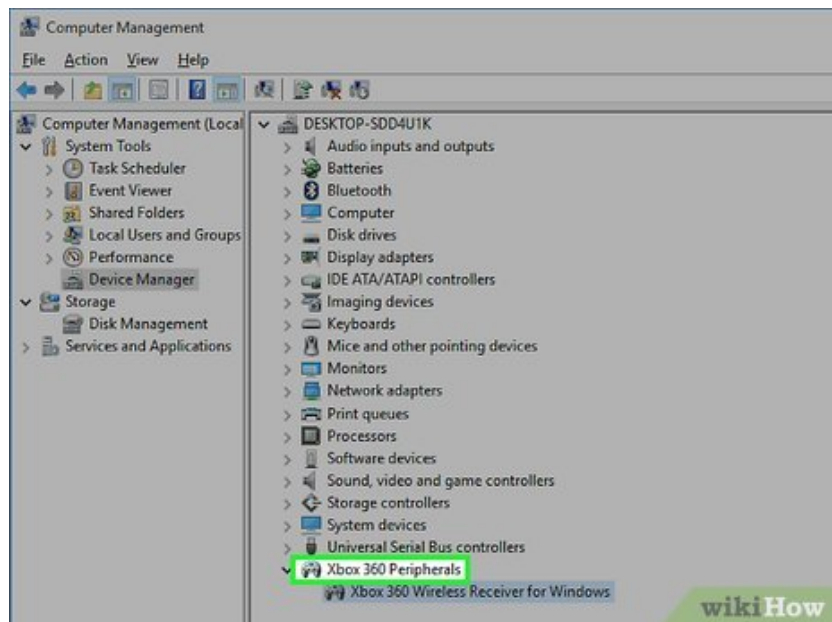
Click **PC Info**. It's near the bottom of the "Settings" column.

6.



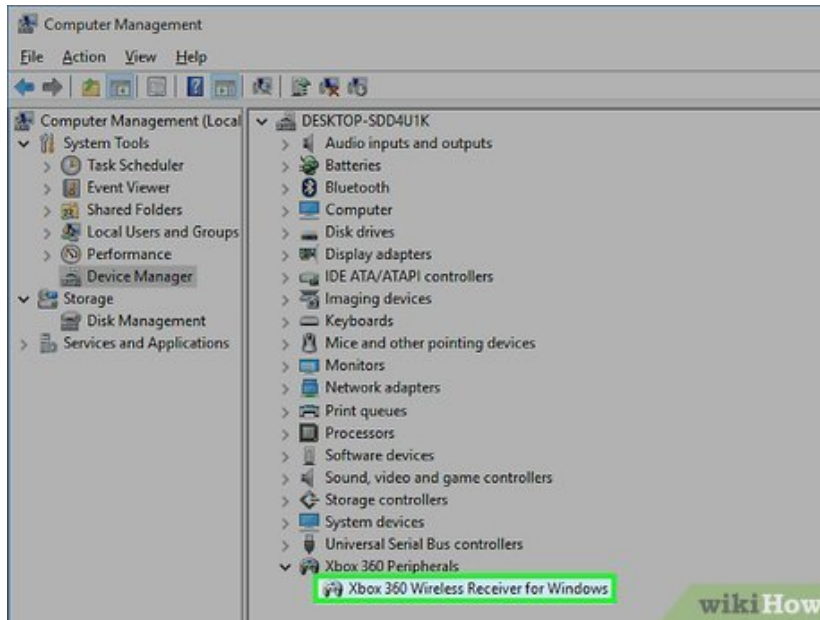
Click **Device Manager**. This option is in the top-left corner of the "PC Info" page.

7.



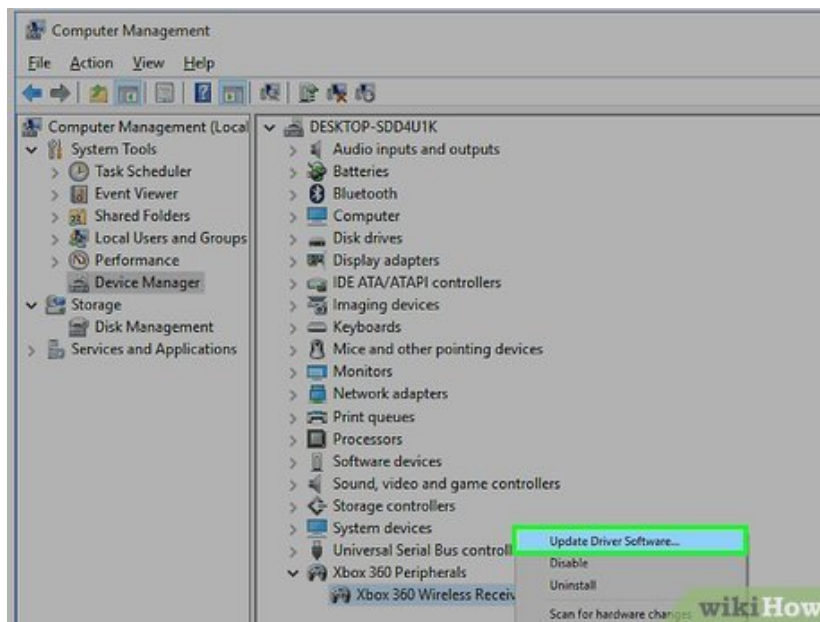
Scroll down and double-click **Xbox 360 Peripherals**. It's at the bottom of the page; double-clicking this option will expand it to show all Xbox 360 accessories. You should see "Xbox 360 Controller for Windows" listed below the "Xbox 360 Peripherals" heading.

8.



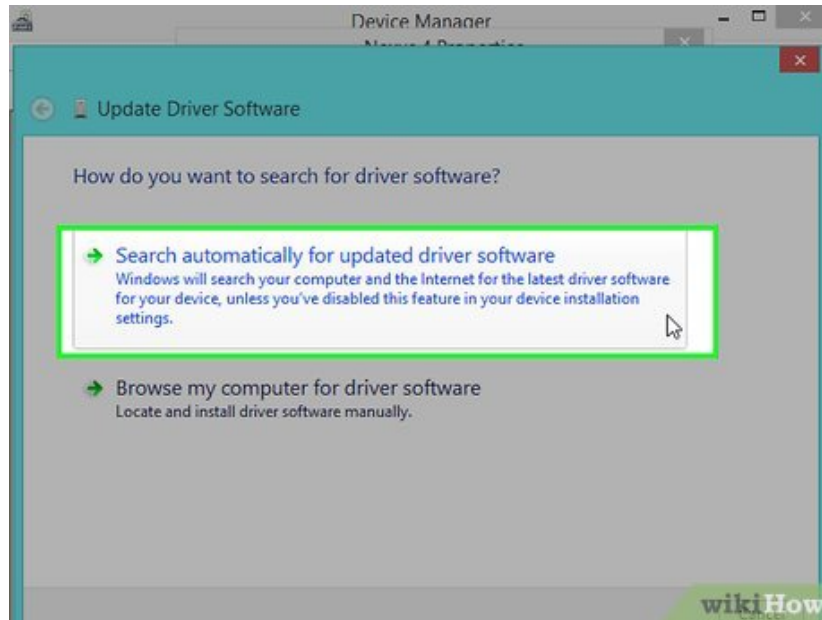
Right-click **Xbox 360 Controller for Windows**. If you don't see this option, try unplugging your controller from its current USB port and plugging it into a different one.

9.



Click **Update Driver Software**. It's the top option in the drop-down menu.

10.



Click **Search automatically for updated driver software**. Doing so will scan for any missing or outdated drivers for your controller. Since you already installed the drivers, you'll likely see a message that says "This device is using the best drivers," in which case your controller is ready to use.

1. If you're prompted to update the drivers, follow the on-screen instructions to do so. After this process is complete, your Xbox 360 controller will be usable with Windows 8!

You finished reading the article "**How to Connect Xbox 360 Wired Controller to PC Windows 8**" edited by the [TipsMake](#) team. We hope this article has provided you with many useful tech tips and tricks. You can search for similar articles on tips and guides. Thank you for reading and for following us regularly.