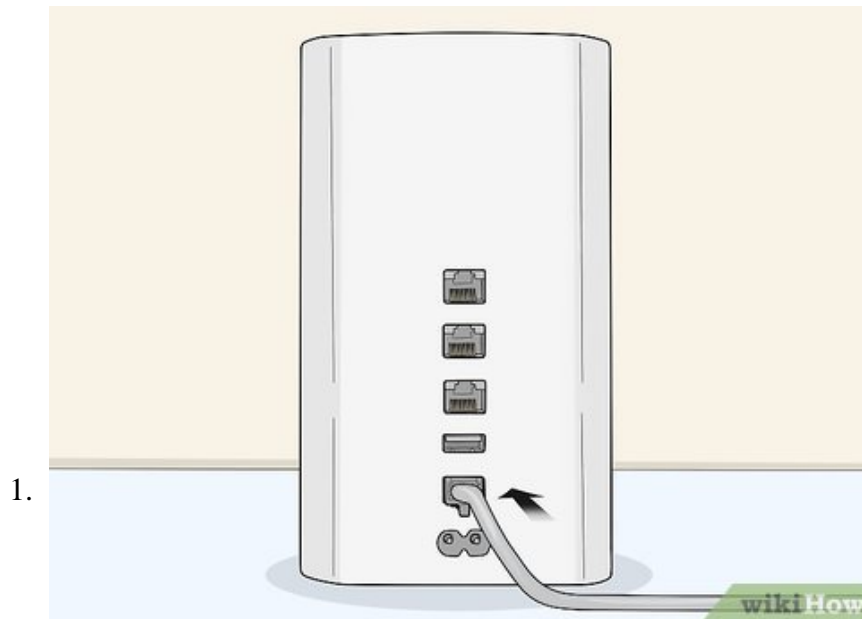


# How to Connect Time Capsule to Mac

This wikiHow teaches you how to connect and set up the AirPort Time Capsule to a Mac computer. The Time Capsule is a two-in-one device that acts as a Wi-Fi router and an external hard drive which automatically backs up all the computers on...

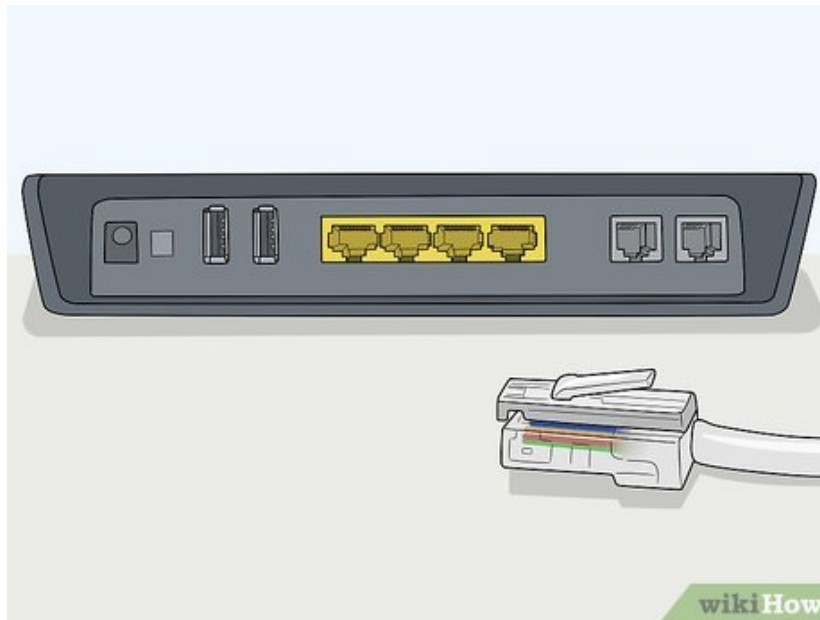
Part 1 of 3:

## Connecting Time Capsule to the Modem



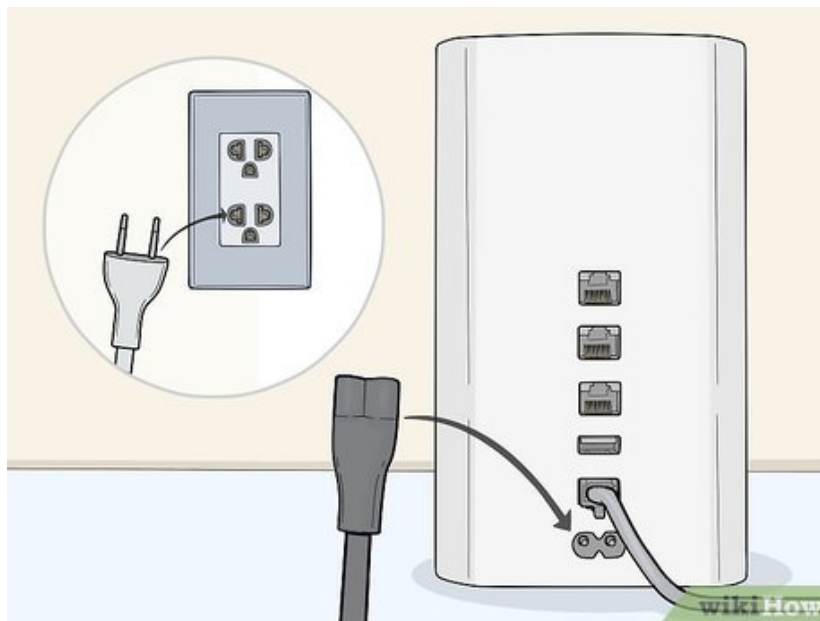
**Connect an Ethernet cable to the Time Capsule.** Use the provided Ethernet cable to connect to the WAN port on the Time Capsule.

2.



**Connect the Ethernet cable to the broadband modem or router.** A typical broadband modem has four WAN ports on the back that you can connect an Ethernet cable too. Connect the other end of the Ethernet cable connected to your Time Capsule to the broadband modem.<sup>[2]</sup>

3.



**Plug the Time Capsule into a power outlet.** Use the AC adapter to plug the Time Capsule into an open power outlet on the wall. Make sure you have a free outlet near your broadband modem to connect your Time Capsule.

1. It's recommended that you plug the Time Capsule (and all your valued electronics) into a surge protector to prevent any damage in the event of an electrical surge.

Part 2 of 3:

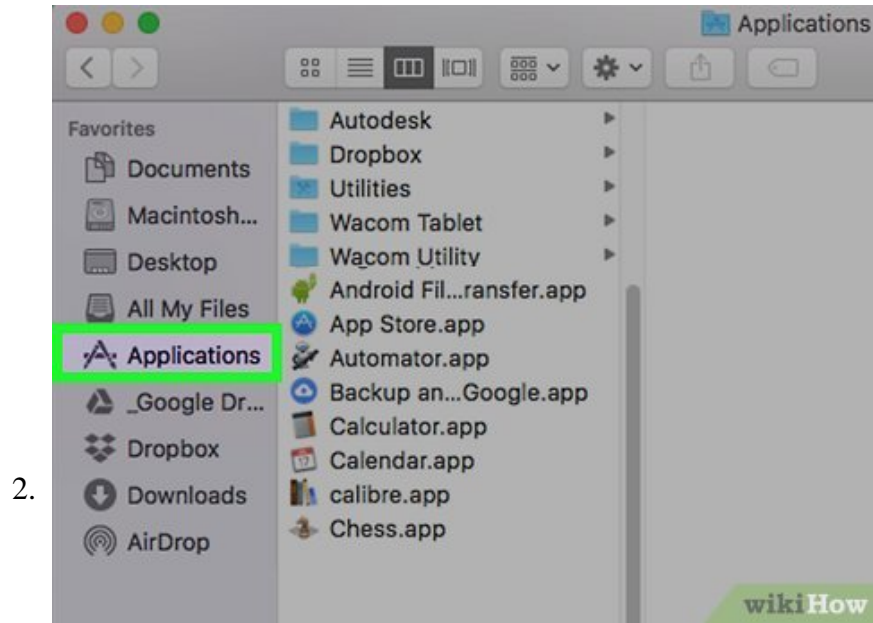
## Setting Up the Wireless Network



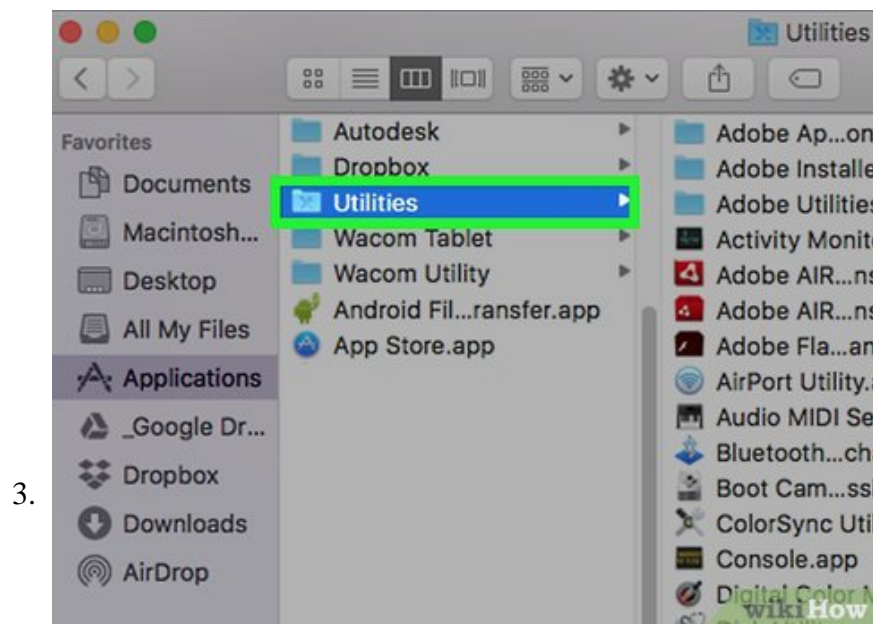
**Open the Finder**



**on your Mac.** The Finder is the app that has a blue and white image with a smiley face. The Finder is used to browse files and applications on your Mac.



Click **Applications**. It's in the sidebar to the left in the Finder. This will display all the applications installed on your Mac.



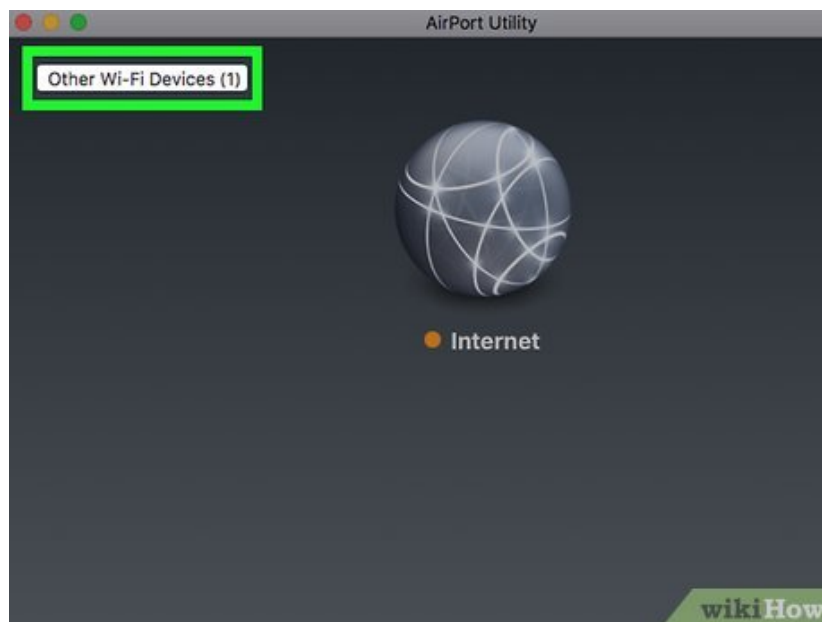
Double-click the **Utilities** folder. It's the blue folder with the icon of a wrench and screwdriver on it at the bottom of the page. This is where all your Mac's system applications are stored.

4.

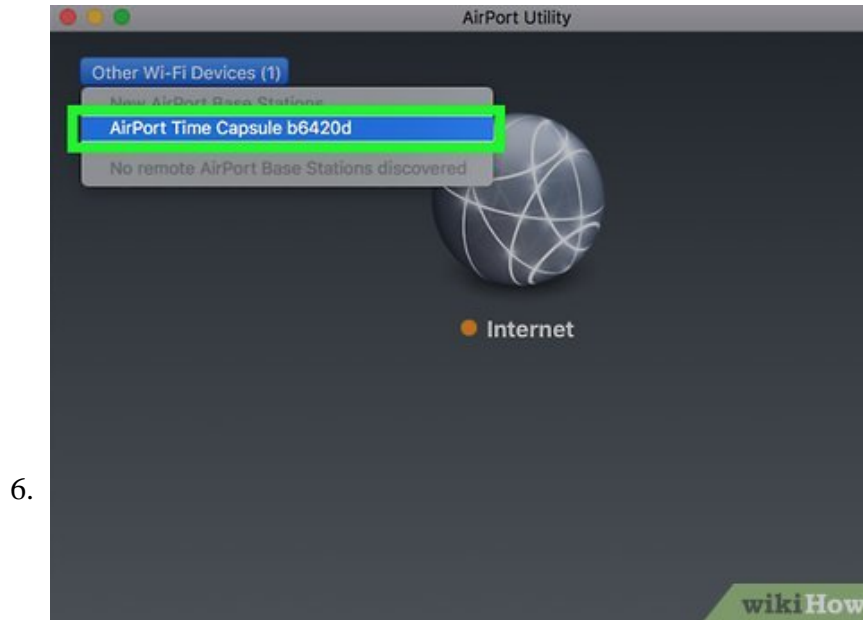


Double-click **AirPort Utility**. It's the app with a blue Wi-Fi symbol on a white background. It's located near the top of the page when displayed alphabetically.

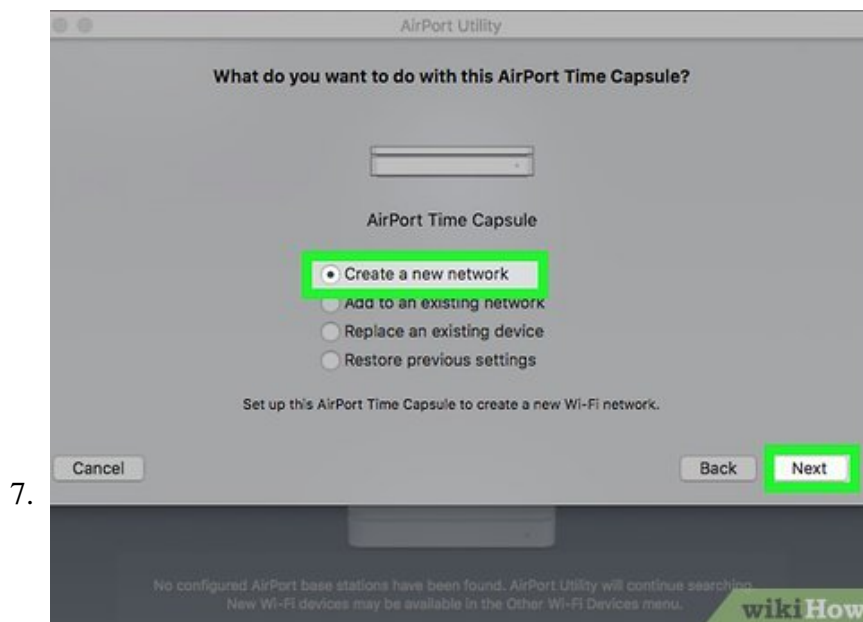
5.



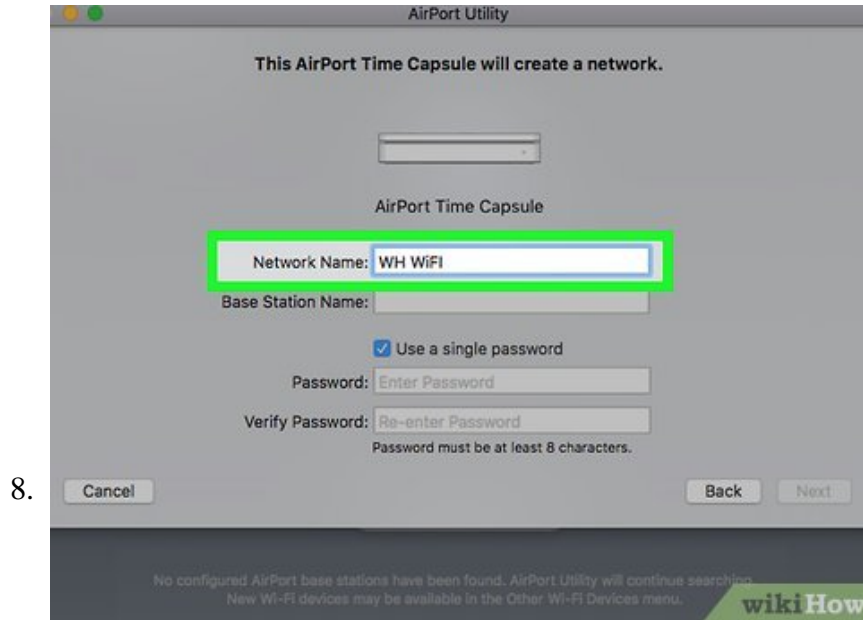
Click **Other wireless devices**. It's in the upper-left corner of the AirPort Utility app.



Click **AirPort Time Capsule**. It's in the menu for Other wireless devices in AirPort Time Capsule. You may see six letters and numbers after "AirPort Time Capsule" like "fea88c" or something similar.



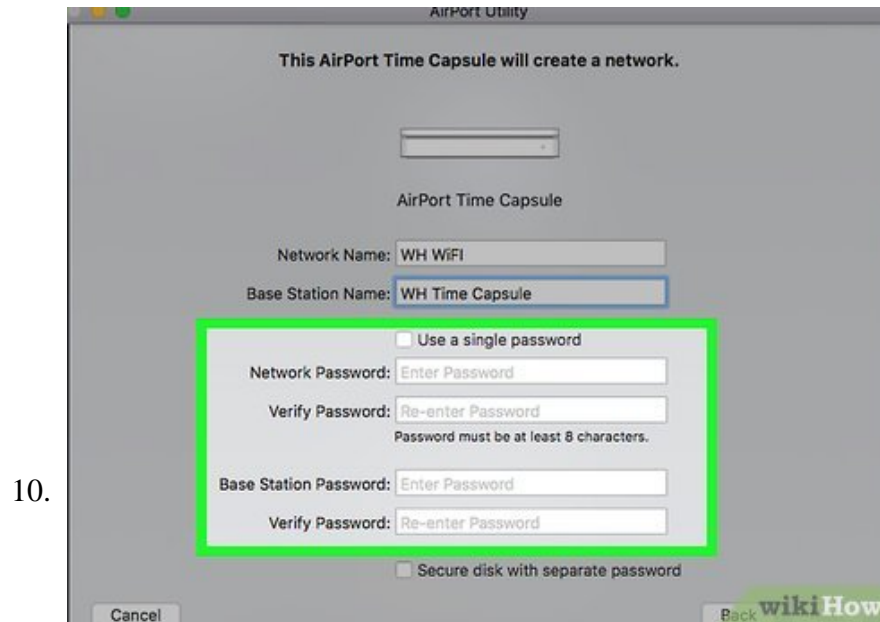
Select **Create New Network** and click **Next**. You will see a list of options when you click on the Time Capsule in AirPort Utility. Click the radial button next to "Create New Network" at the top of the list of options. Click "Next" when you are done.



**Name the network.** Click the text box next to "Network Name" and type a name for the network. You can name the network anything you want. You can name it your last name, or something clever.

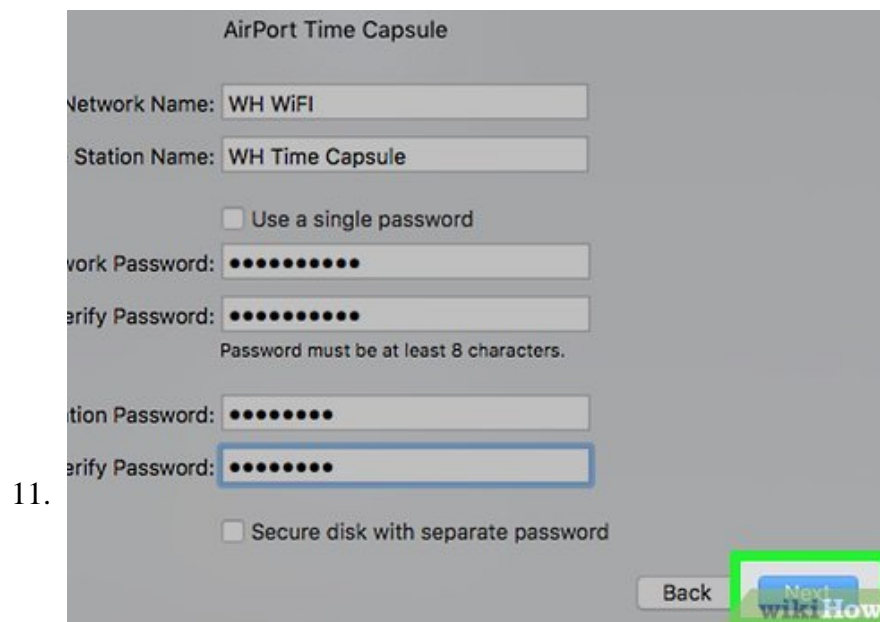


**Name the base station.** Click the box next to "Base Station Name" and type a name. The base station is the name for the Time Capsule. Having a separate name for the Time Capsule is useful if you ever get another Time Capsule to expand your network.



**Create a password.** Use the text boxes next to "Network Password" and "Verify Password" to create a password. Make sure the password is identical for both boxes.

1. To create a separate password for the Time Capsule, uncheck "Use a single password" This will give you two more boxes to create a password for the individual Time Capsule. This is useful if you have more than one Time Capsule and you want to create a password for a guest house or guest room.



Click **Next**. It's in the lower-right corner of the AirPort Utility app.

12.

AirPort Time Capsule

Network Name: WH WiFi

Station Name: WH Time Capsule

Use a single password

Work Password: ●●●●●●●●

Verify Password: ●●●●●●●●

Password must be at least 8 characters.

Station Password: ●●●●●●●●

Verify Password: ●●●●●●●●

Secure disk with separate password

Back [Next](#) [wikiHow](#)

**Restart your modem.** Now you will be asked to reboot your modem. Unplug it for about a minute and plug it back in and wait for it to fully restart.

13.

This AirPort Time Capsule can create a guest Wi-Fi network.

WH Time Capsule

Enable guest network: WH GUEST

Secure guest network

Guest Network Password: Enter Password

Verify Password: Reenter Password

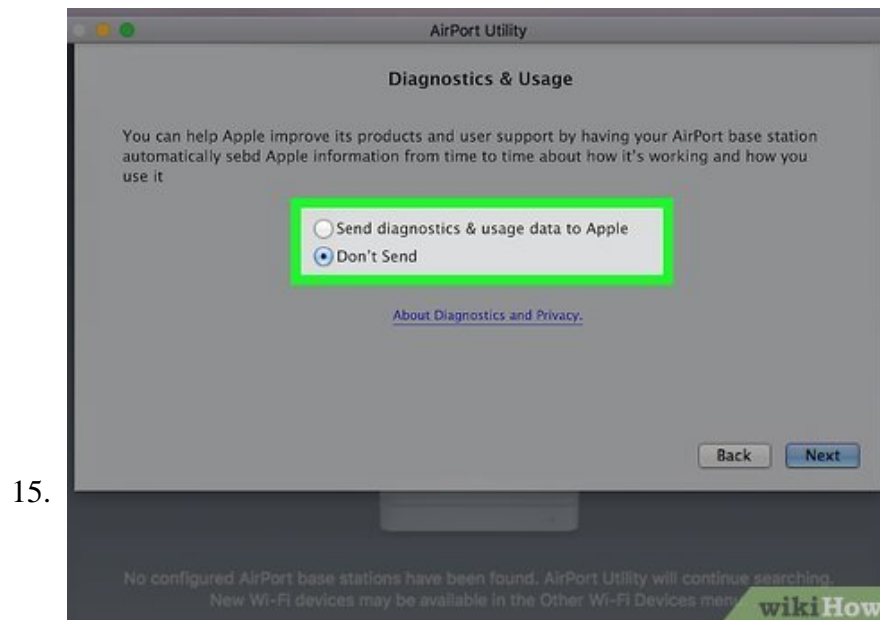
Password must be at least 8 characters.

Back [wikiHow](#)

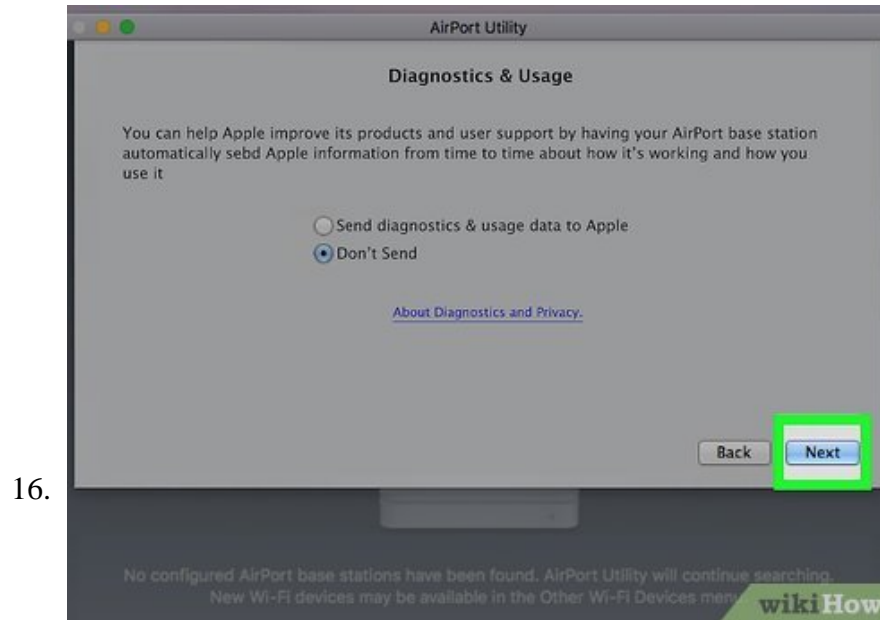
**Create a guest network (optional).** If you wish to enable a guest network, check the checkbox next to "Enable guest network" and then type a name for the guest network. This allows guests to be able to access your network without being able to access all the computers on the network. If you don't want to have a guest network, don't click the checkbox.



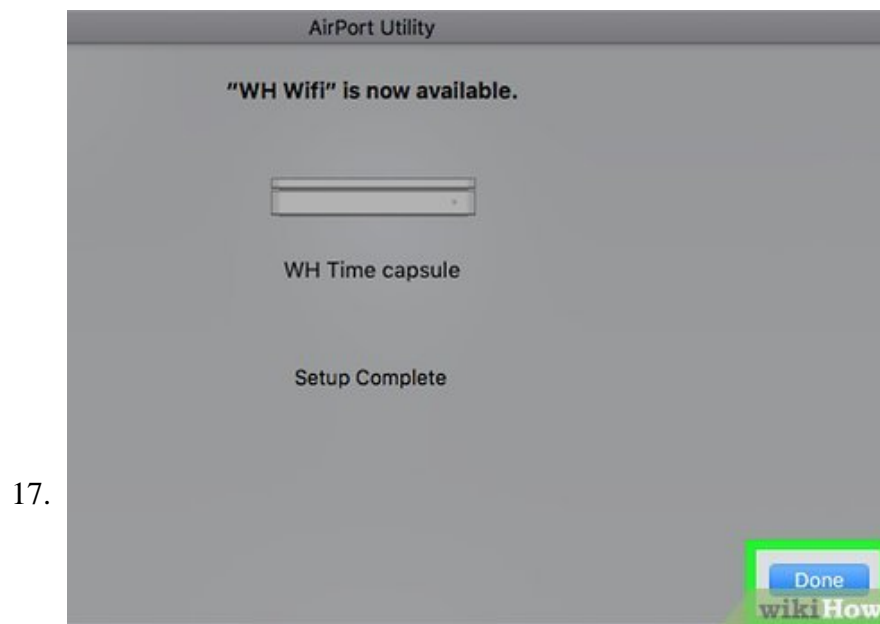
Click **Next**. It's in the lower-right corner of the AirPort Utility app.



**Enable diagnostics & usage data to be sent to Apple (optional).** If you want your Time Capsule to send diagnostics and usage data to Apple, click the radial button next to "Send diagnostics & usage data to Apple". All data sent to Apple is anonymous. If you don't wish to send diagnostics and usage data to Apple, click the radial button next to "Don't Send".



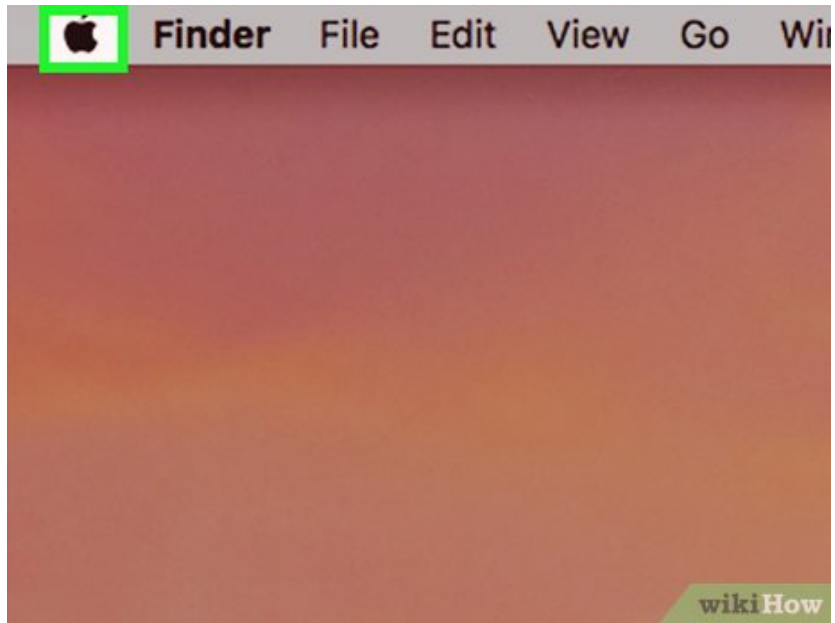
Click **Next**. It's in the lower-right corner of the AirPort Utility app. AirPort Utility will now configure your network.



Click **Done**. Your network setup is now complete.

Part 3 of 3:

## Accessing the Time Capsule Data

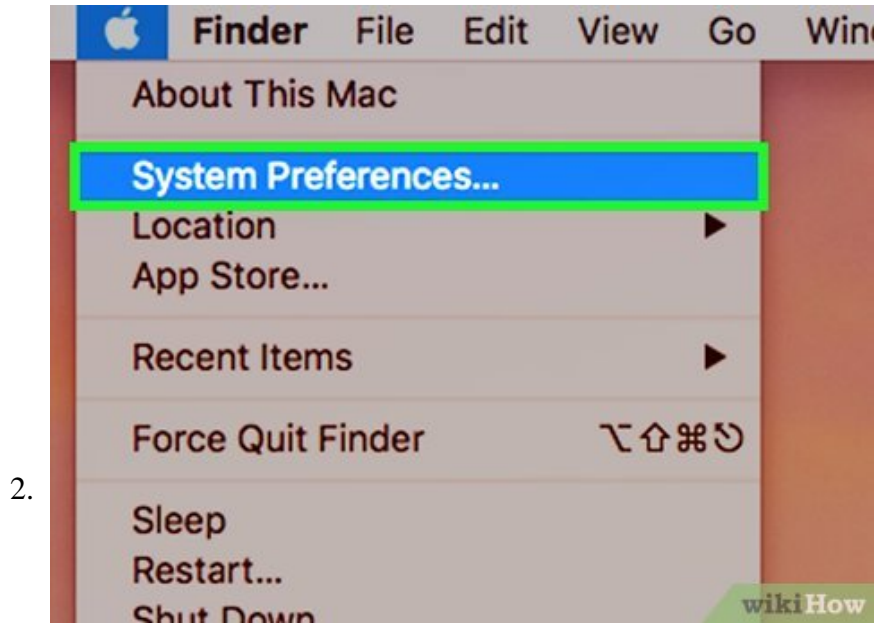


1.

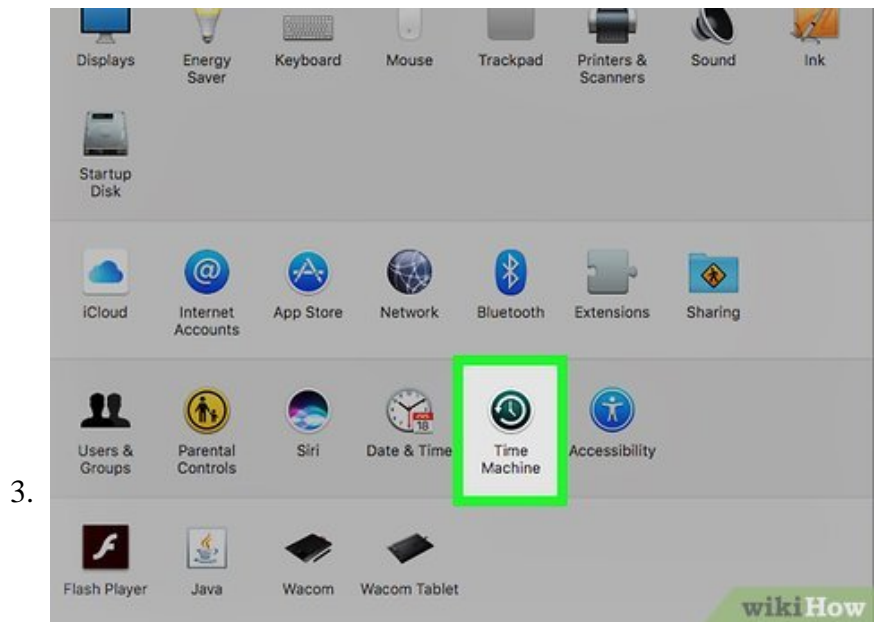
**Click the Apple icon**



. It's in the menu bar in the upper-left corner of the screen.

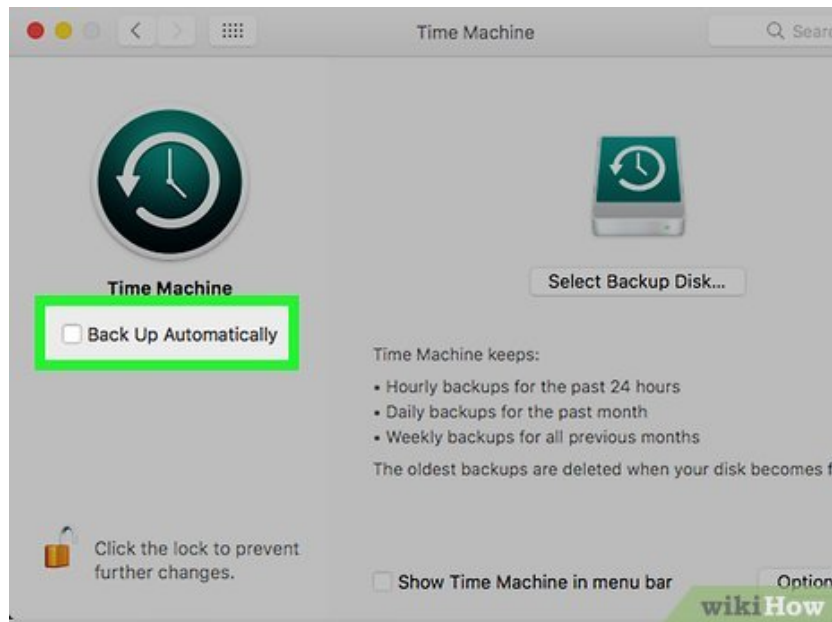


Click **System Preferences...**. This is where you access your system preferences applications.



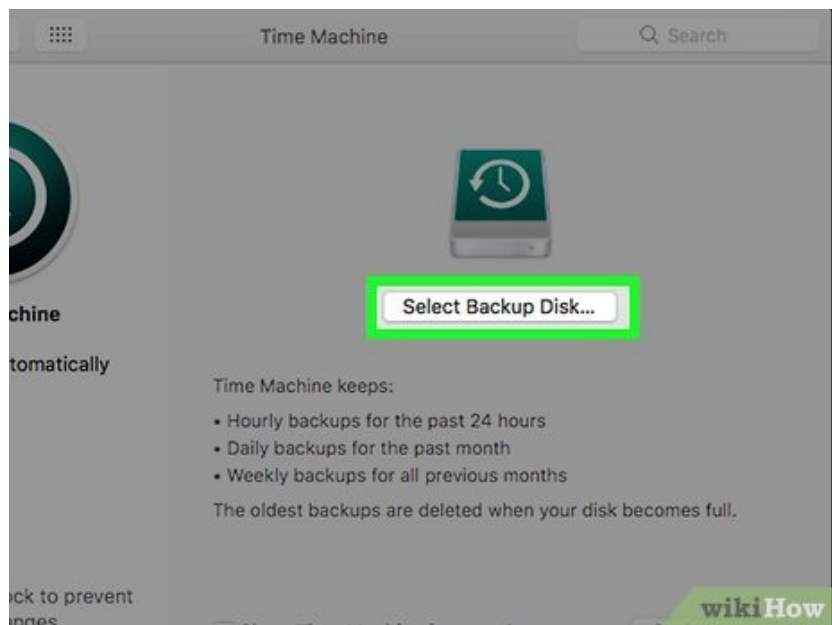
**Open Time Machine.** Time Machine is the app that has a green icon that resembles a clock.

4.



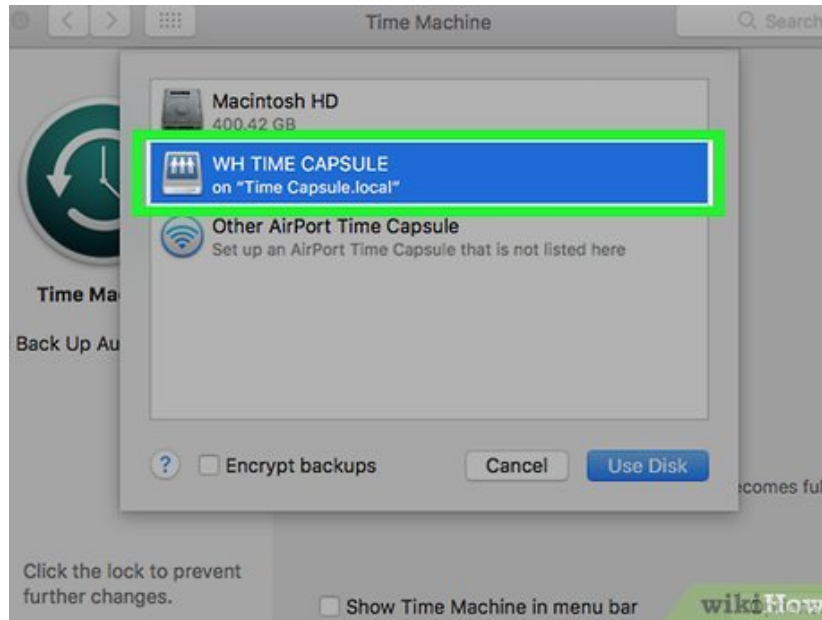
**Check the checkbox for "Back Up Automatically".** Click the checkbox next to "Back Up Automatically". This will ensure that your computer is backed up automatically so that you don't forget to backup your system.

5.



**Click "Select Backup Disk"**. You will see a popup menu with all the Time Capsules connected to your network.

6.



**Select the Time Capsule.** This will select the Time Capsule as your backup disk, and allow access the data portion of your Time Capsule.

You finished reading the article "**How to Connect Time Capsule to Mac**" edited by the [TipsMake](#) team. We hope this article has provided you with many useful tech tips and tricks. You can search for similar articles on tips and guides. Thank you for reading and for following us regularly.