

# How to connect the PS4 controller to a computer

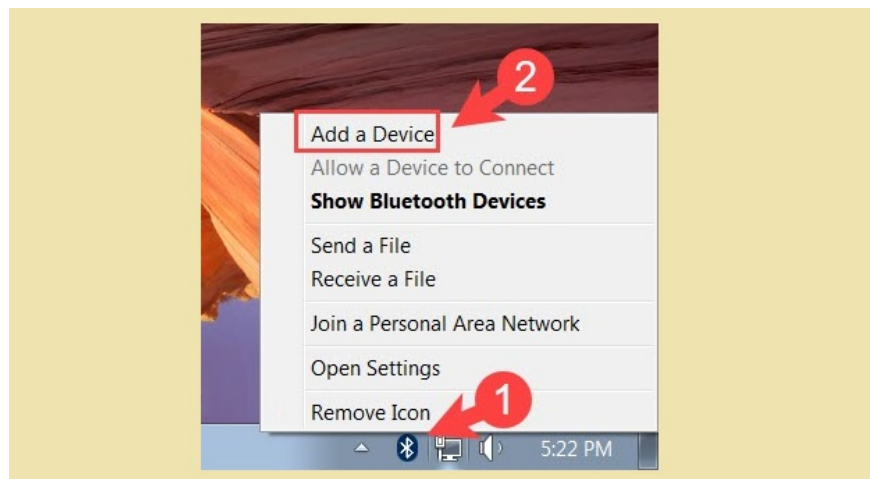
How to connect the PS4 controller to a computer. PS4 controller (Dualshock 4) gives you a more enjoyable and engaging gaming experience. However, connecting the PS4 controller to a computer is not as simple as you think, but must go through some of the steps presented in the following article.

## 1. Connect the PS4 controller to your computer via Bluetooth

Connecting the PS4 controller via Bluetooth is the fastest and most convenient way. If your computer does not have a Bluetooth adapter, you should buy a compact Bluetooth transceiver like the model ORICO Bluetooth Adapter 4.0 (BTA-403) or TPLink UB400 to use.

### 1.1. On Windows 7

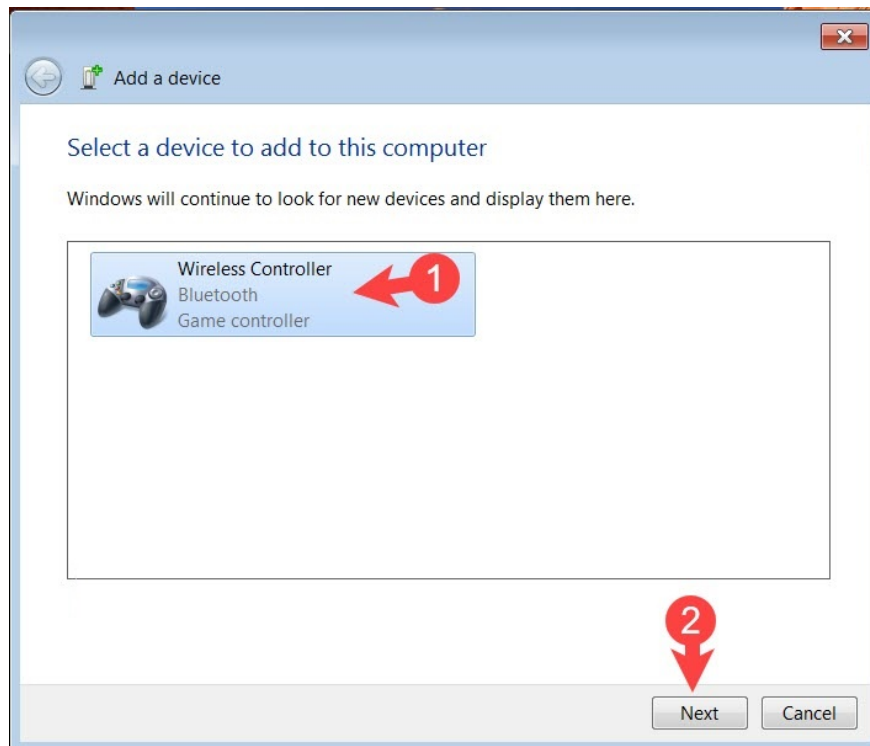
Step 1: Right-click the Bluetooth icon (1) in the system tray => Add a Device (2).



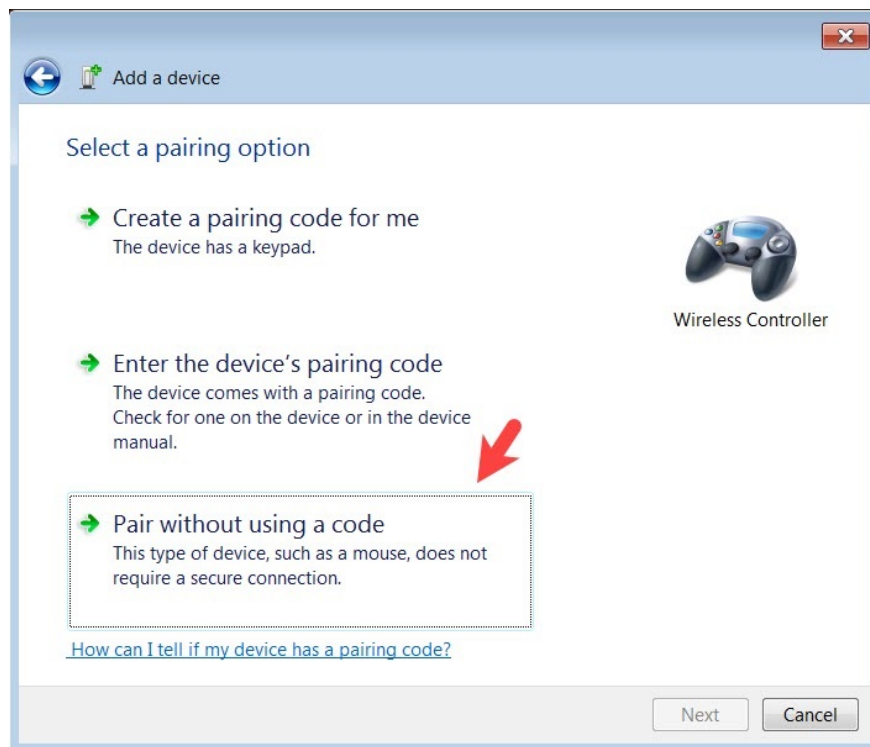
Step 2: You press and hold the PS (1) key and the Share key (2) for about 5-10 seconds or until the led lights in front flash.



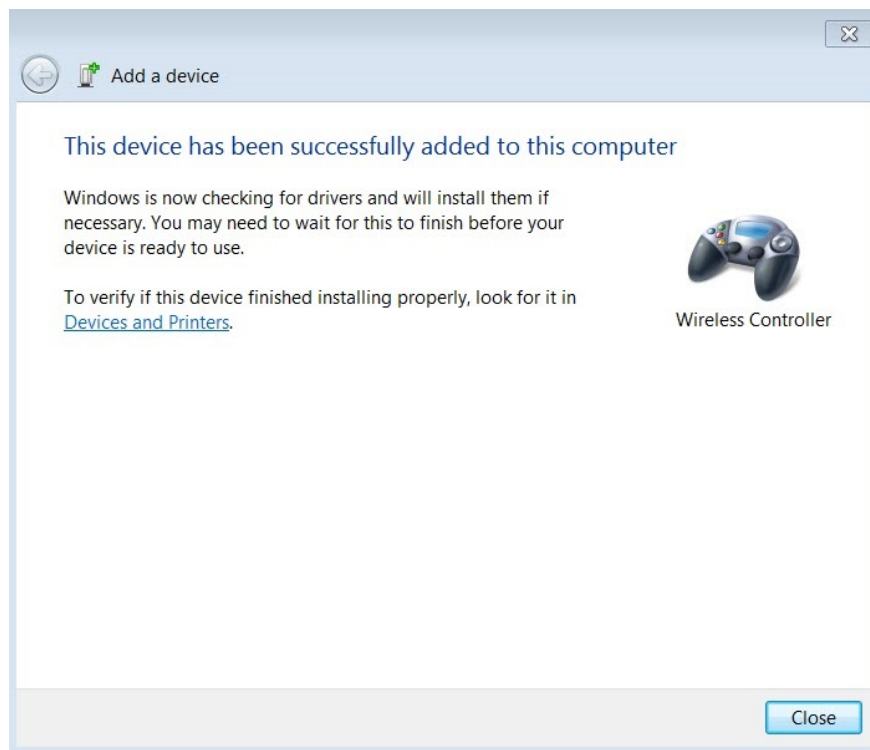
At this point, the Bluetooth display on the computer will show the Wireless controller. You click on Wireless controller (1) => Next (2).



Step 3: You choose Pair without using a code.

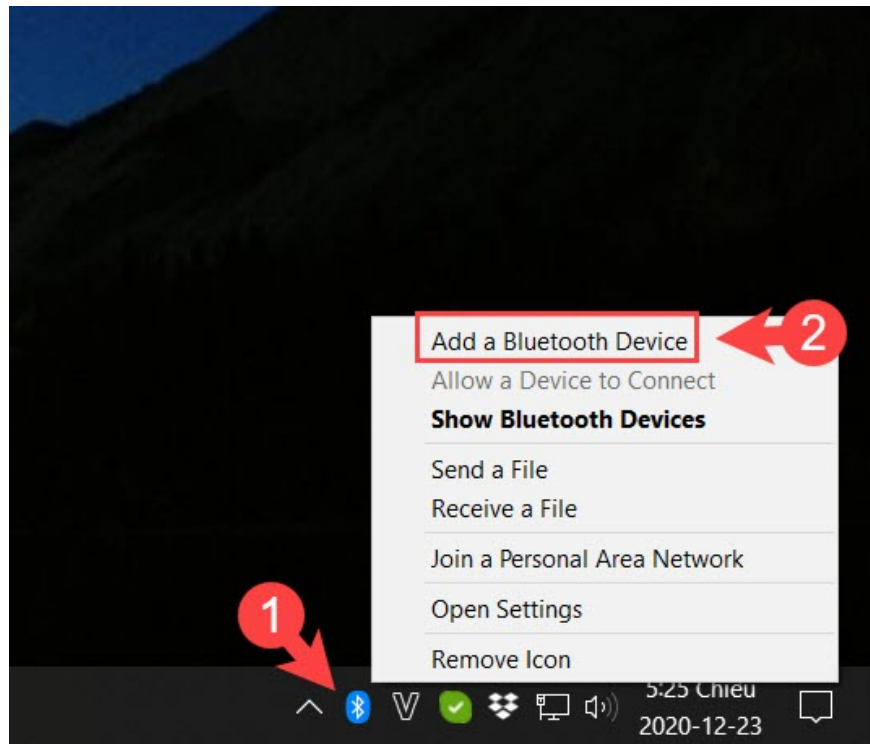


After the message as shown above is finished. Click Close to close.

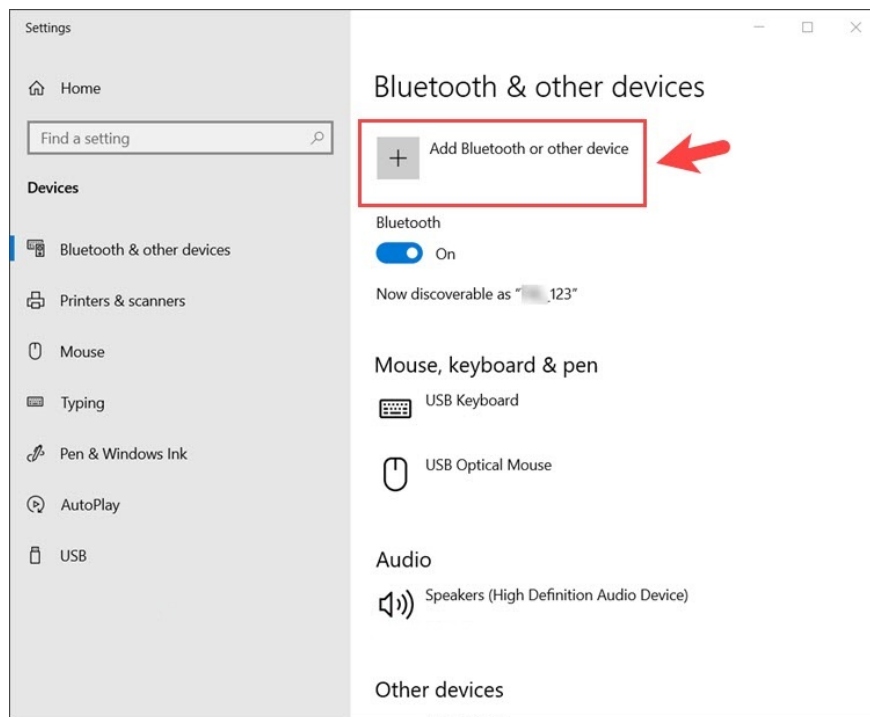


## 1.2. On Windows 10

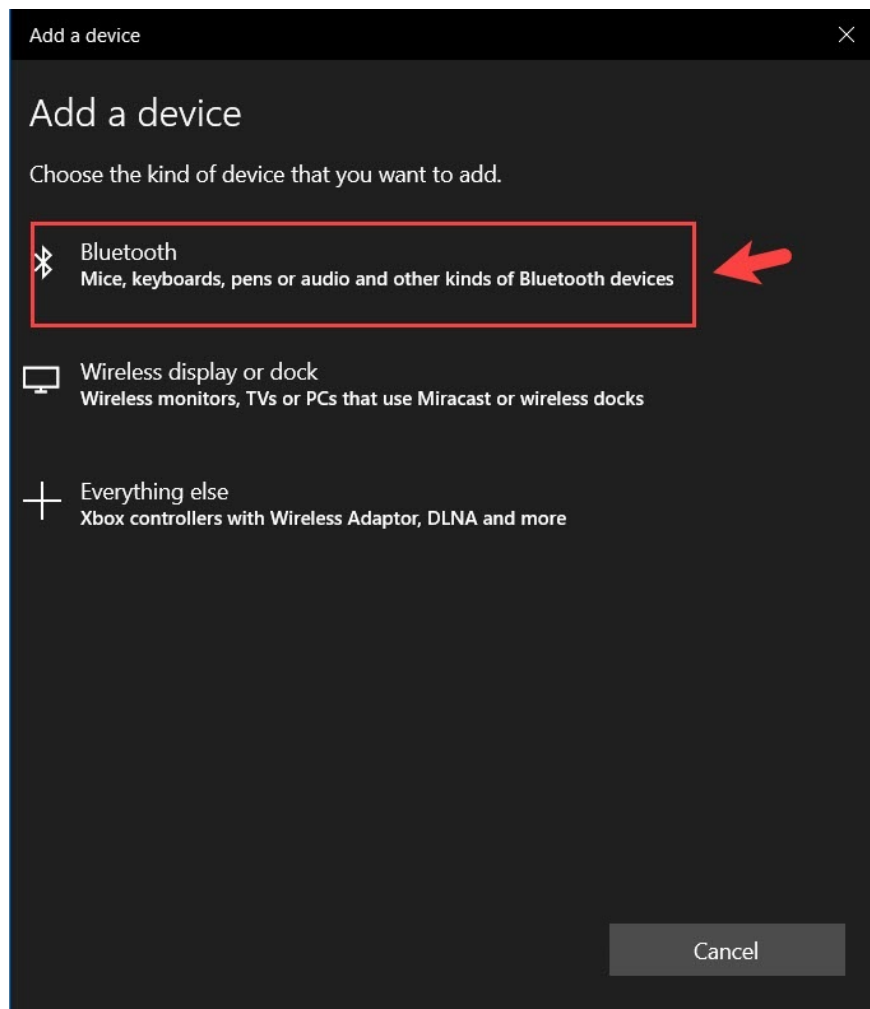
Step 1: Right-click the Bluetooth icon (1) => Add a Bluetooth Device (2).



Step 2: Click on Add Bluetooth or other device.



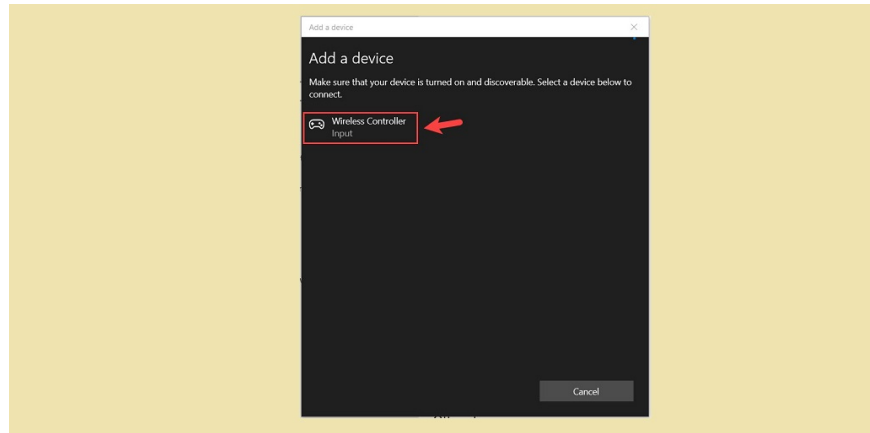
Next, you click on the Bluetooth line.



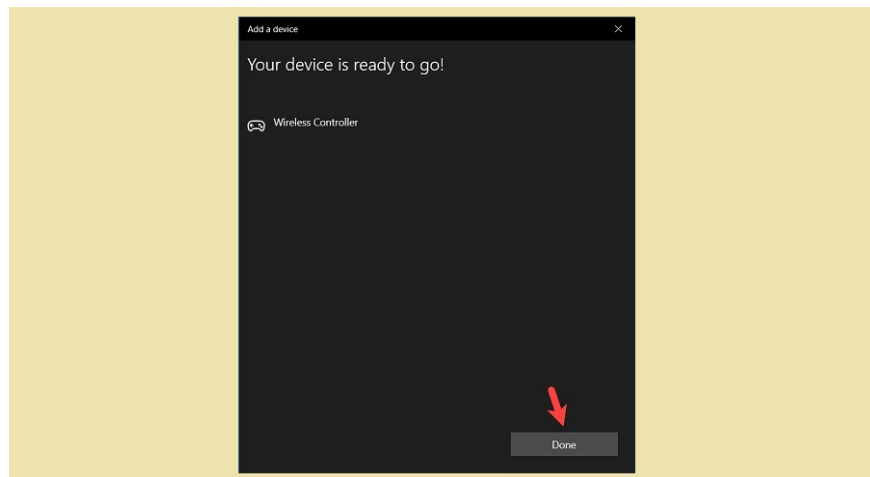
Step 3: You press and hold the PS (1) and Share (2) buttons until the led light blinks to turn on Bluetooth mode.



Next, click Wireless controller on the Bluetooth device search interface.

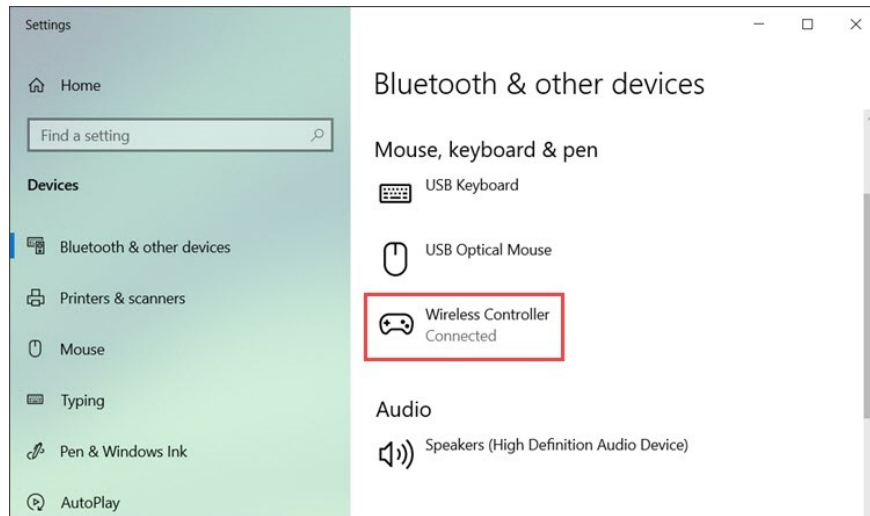


Step 4: Click Done to finish after connecting.



Then, the Connected status appears, meaning your PS4 controller is connected to your computer.

In addition to connecting by Bluetooth, you can connect your computer to your PS4 with a micro USB cable with the micro USB port located below the led light on the PS4 hand. If you 'pay money' and know where to sell, you can buy a DUALSHOCK 4 USB Wireless Adapter to plug into your computer and receive Bluetooth signals from your Dualshock 4.

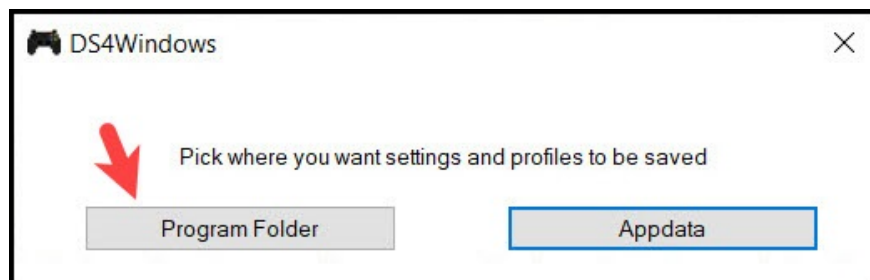


## 2. Configure for dualshock 4 using DS4Windows tool

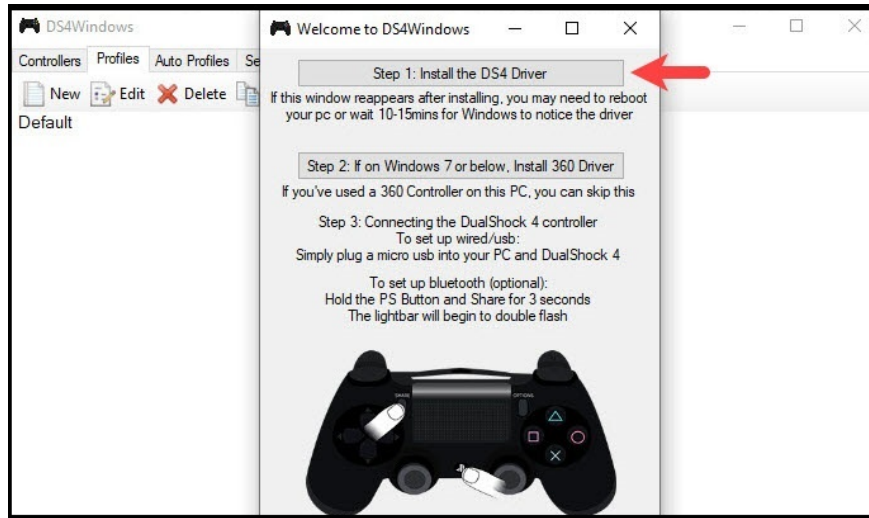
Since the dualshock 4 controller does not support Windows computers, it only supports Xbox 360, xbox one controllers, so we will use the software to 'bypass' and configure the dualshock 4 to be an Xbox controller.

First, you need to download DS4Windows software [here](#).

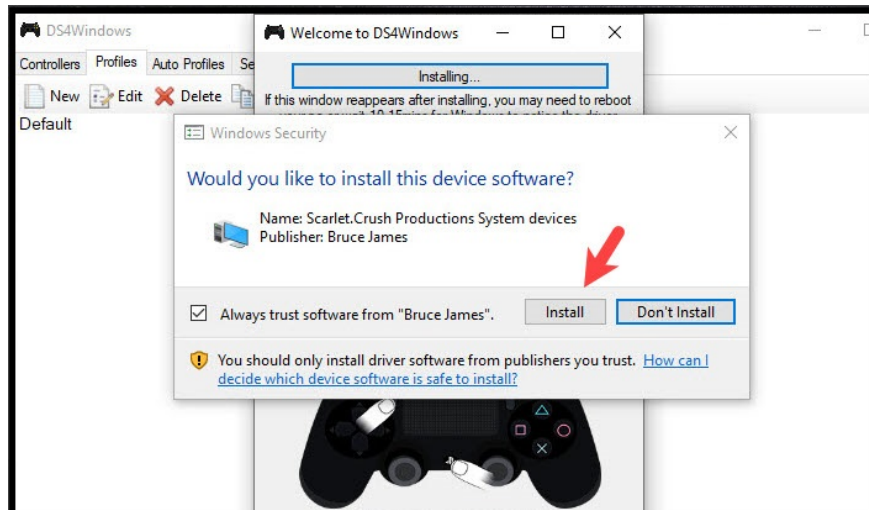
Step 1: Open the software DS4Windows.exe and select the folder containing the installation file of the software. You should choose the Program Folder folder to encapsulate the files in a folder.



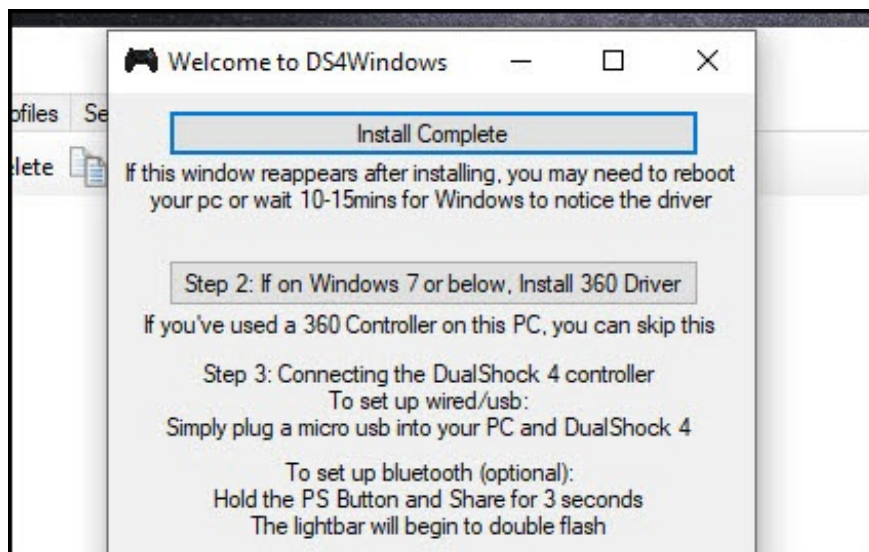
Step 2: Click on Step 1 to start the installation. With Windows 7 and below, after installing Step 1, you need to install more in Step 2 again.



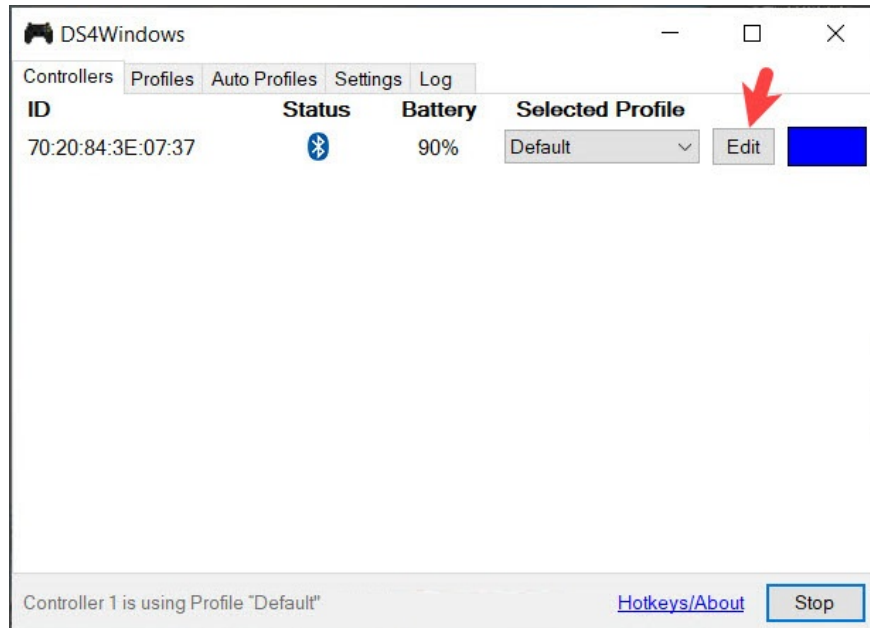
Click Install to install.



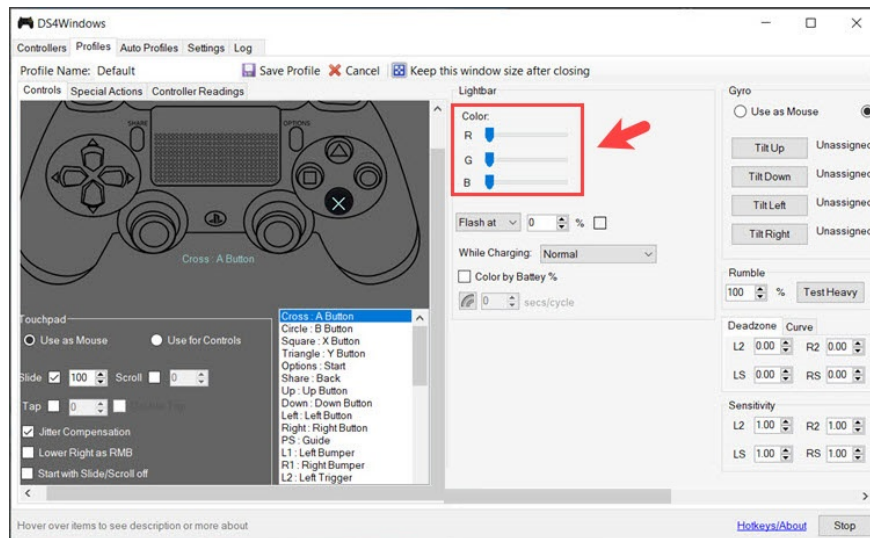
After the installation is complete, click Finish to complete.



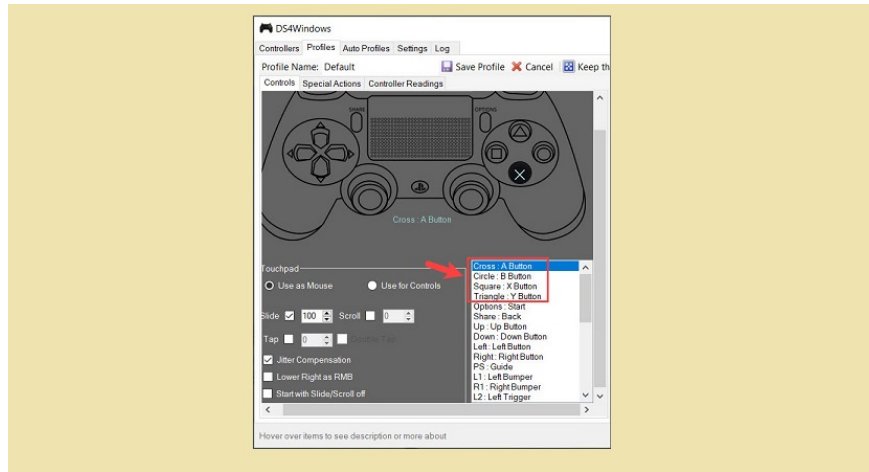
Step 3: You click Edit to edit the configuration for Dualshock 4 controller.



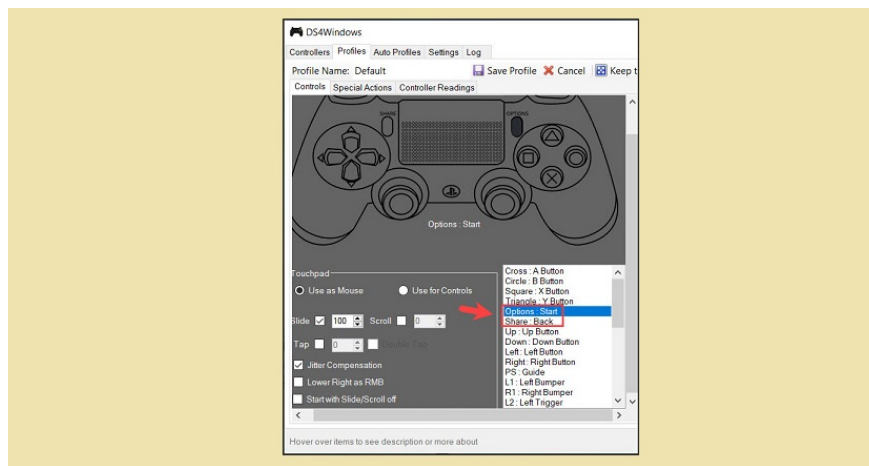
Step 4: To adjust the color of the led lights on the handle, please adjust the color system R, G, B in the Lightbar. To save battery for the handle and avoid glare, please set R, G, B to 0 to turn off the light.



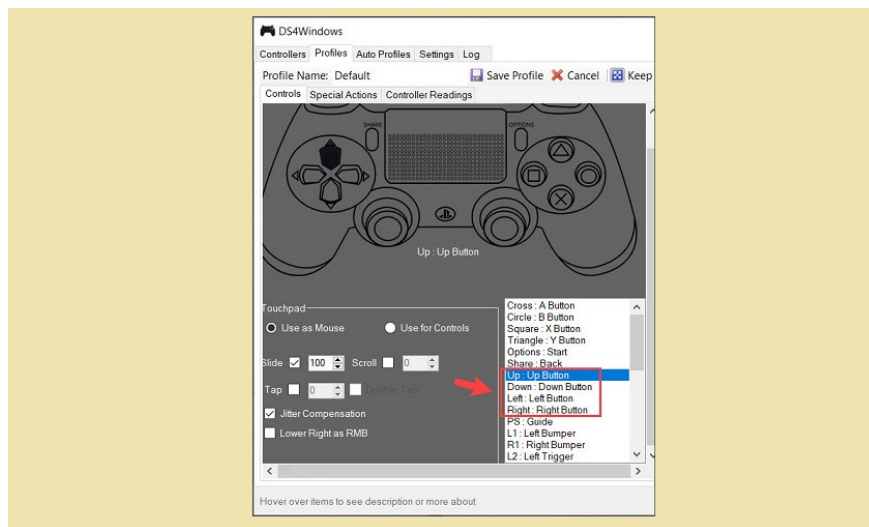
Step 5: You assign the controller button as ABXY (on the Xbox hand) with the XO?" key (dualshock 4).



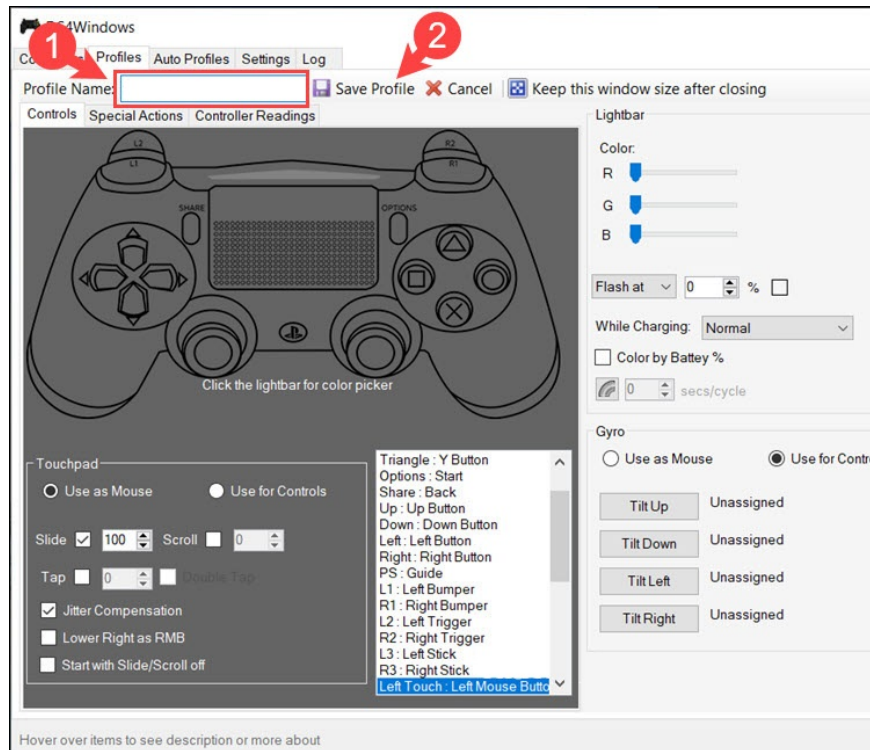
Assign the Options and Share keys, respectively, to the Xbox controller.



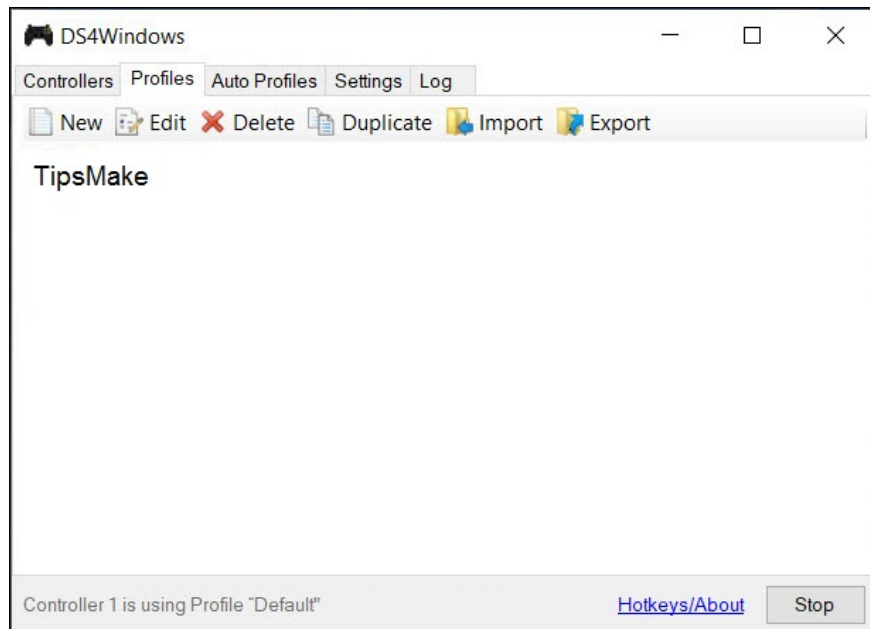
Next, you assign corresponding scroll keys and other remaining function buttons.



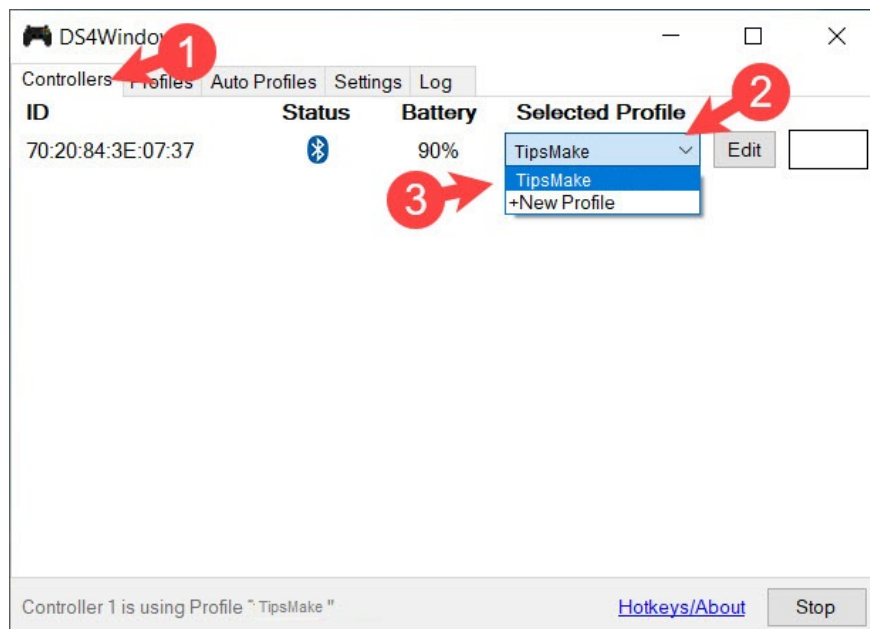
Step 6: You name the Profile (1) => Save Profile (2) to save.



Your new profile is then saved with the given settings.



Step 7: To connect the controller with the Profile you set, click Controllers (1) => Selected Profile (2) => choose the profile (3) you set.



Playing games with the controller is very useful when you play sports games that need fast key combinations such as soccer (PES, Fifa), racing (Need For Speed, Forza) .

Have a nice day!

You finished reading the article "**How to connect the PS4 controller to a computer**" edited by the [TipsMake](#) team. We hope this article has provided you with many useful tech tips and tricks. You can search for similar articles on tips and guides. Thank you for reading and for following us regularly.