

How to connect Surface tablet wirelessly to a TV

All Surface devices usually connect to compatible displays using Miracast. You can also connect via Microsoft Wireless Adapter. Here's how to connect the Surface to the TV using both methods and what you can do once it's all set.

All Surface devices often connect to Miracast-compatible displays, a standard that wirelessly projects the screen of a smartphone, tablet or PC onto a TV without the need for a physical cable. You can also connect via Microsoft Wireless Adapter. Here's how to connect the Surface to the TV using both methods and what you can do once it's all set.

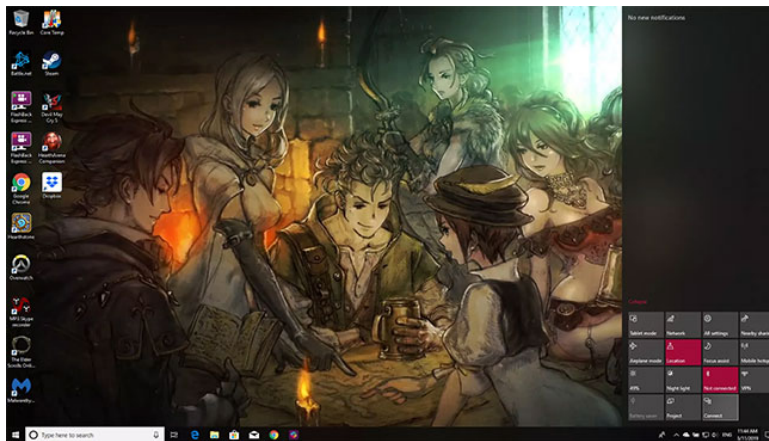
Note : Using Miracast will not cost you any costs. Otherwise Microsoft Wireless Adapter will be sold separately.

How to connect a Surface tablet to a TV using Miracast

1. Make sure your TV supports Miracast. You can do this by visiting the manufacturer's website for TVs or monitors.

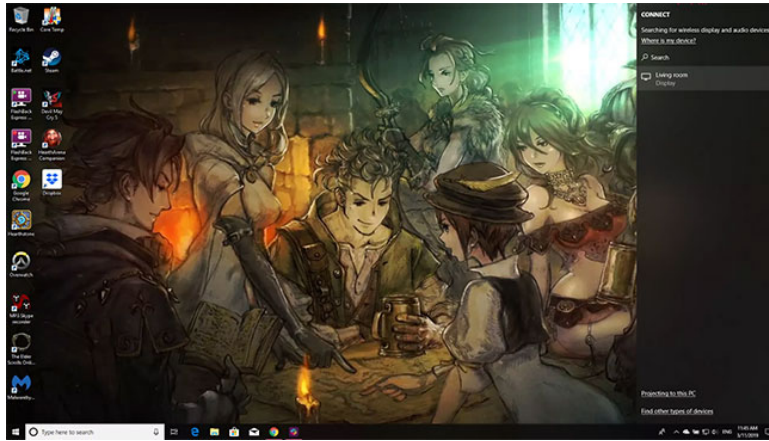
In addition, the Wi-Fi Alliance also has a constantly updated list of devices that support Miracast.

2. On the Surface tablet, select the icon on the right to open **Windows 10 Action Center** , then select **Connect**.



Open Action Center

3. You will see a list of available devices. Find and select the device you want to connect.

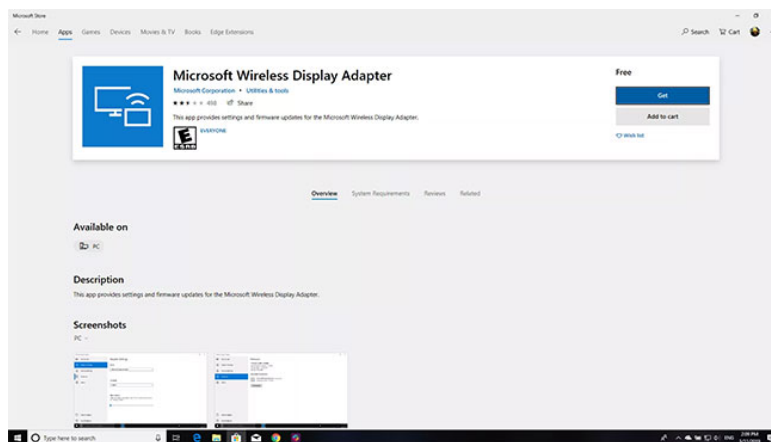


Find and select the device you want to connect

4. Some devices require a PIN or password before proceeding. After entering the required information, you will see the Surface tablet screen on the TV.

How to connect a Surface tablet to a TV using Microsoft Wireless Adapter

1. On a Surface tablet, download and install the Microsoft Wireless Display Adapter application. It's free on Microsoft Store.



Install the Microsoft Wireless Display Adapter application

2. Connect the HDMI end of the Microsoft Wireless Adapter to the HDMI port on the TV.

3. Connect the USB end of the adapter to the USB charging port on the TV.

Note : Microsoft Wireless Display Adapter is powered from a USB connection. If the TV does not have a USB charging port, you can plug the adapter's USB end into any other USB charger, including a Surface Pro or Surface docking station power supply.

4. Change the TV input to match the HDMI port you just plugged in the adapter.
5. On a Surface tablet, open **Action Center** by swiping from the right edge of the screen or selecting the **Action Center** icon on the taskbar.
6. Select **Connect** , then select **Microsoft Wireless Display Adapter** .

You finished reading the article "**How to connect Surface tablet wirelessly to a TV**" edited by the [TipsMake](#) team. We hope this article has provided you with many useful tech tips and tricks. You can search for similar articles on tips and guides. Thank you for reading and for following us regularly.