

How to connect Raspberry Pi remotely to a Windows computer

Perhaps you need to check your email or some other application that you can only access on your PC. Therefore, you will need to configure a remote connection for your Raspberry Pi.

You are working hard on Raspberry Pi but need to access Windows computers. So what to do? But wait, what if the Windows computer is on the other side of the house or even upstairs?

It is not convenient to stop the work in progress and switch to the main computer. What if you could access your computer on the spot? Wouldn't it be great? Yes, you absolutely can do this! Just connect remotely to your Windows computer from Raspberry Pi.

How to connect Raspberry Pi remotely to a Windows computer

1. How to connect Raspbian remote to Windows
 1. Step 1: Configure Windows for remote connection
 2. Step 2: Find the IP address of the Windows device
 3. Step 3: Install RDP software on Raspberry Pi
 4. Step 4: Find and install a remote desktop control application
 5. Step 5: Connect to your PC with Remmina
2. Remotely control a Windows computer with Raspberry Pi

How to connect Raspbian remote to Windows

Perhaps you need to check your email or some other application that you can only access on your PC. Therefore, you will need to configure a remote connection for your Raspberry Pi.

This process is very simple, but you probably don't know how to do it. Do not worry! The article will guide you in detail right now. Here are the main steps:

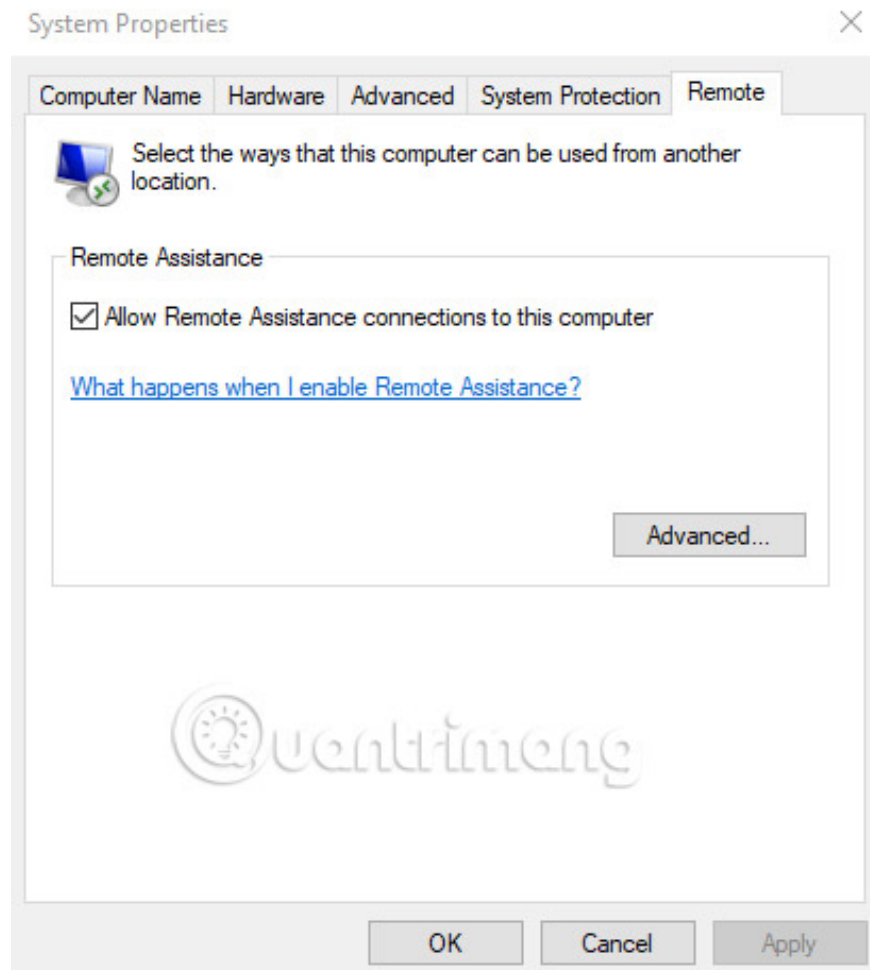
1. Configure Windows to accept remote connections
2. Find the IP address of the Windows computer
3. Install Remote Desktop Protocol (RDP) software on Raspbian
4. Install remote desktop control application on Raspbian
5. Connect to your PC via Raspberry Pi

In just five steps, you can set up a remote connection to your computer from the Raspberry Pi.

Step 1: Configure Windows for remote connection

The first step is to make sure Windows can accept remote connections to it using the RDP protocol. To ensure this, you will need to enable the **Remote Assistance** setting.

Open **Windows Explorer** , then find **This PC** . Right-click, then select **Properties**. In the **System** window , find the **Remote settings** section .



Here, you will see the **Allow Remote Assistance connections to this computer** check box. Select it, then click **Apply** to confirm. Note that there is an **Advanced** button that you should also choose. Select **Allow this computer to be controlled** , then click **OK**.

Click **OK** to close the **Properties** box , and then exit the **System** window .


Step 2: Find the IP address of the Windows device

Next, you need to find the IP address of the Windows computer. You have several options here.

The easiest way is to right-click on the **Start** button and select **Windows PowerShell** . When the blue command line window opens, enter:

```
ipconfig
```

Check your current connection list. Wi-Fi will be listed as **Wireless LAN Adapter** and so will **Ethernet** .



```
Media State . . . . . : Media disconnected
Connection-specific DNS Suffix . : 
Ethernet adapter Local Area Connection 2:

Media State . . . . . : Media disconnected
Connection-specific DNS Suffix . : 
Ethernet adapter Local Area Connection:

Connection-specific DNS Suffix . : home
IPv4 Address. . . . . : 192.168.1.210
Subnet Mask . . . . . : 255.255.255.0
Default Gateway . . . . . : 192.168.1.1

Ethernet adapter Bluetooth Network Connection:

Media State . . . . . : Media disconnected
Connection-specific DNS Suffix . : 
PS C:\Users\atomi>
```

If this is too complicated, the other way is to access your router via a web browser. You will need to check the router's documentation to learn how to do this, but after connecting, you can see the list of devices connected to your home network.

Find the hostname of the computer (via the **System** window that you opened earlier to enable **Remote Assistance**) and you will find the IP address. It usually has **192.168.0.x** or **192.168.1.x** format.

Once you have found the IP address, write down this address.

Step 3: Install RDP software on Raspberry Pi

It's time to turn your attention to Raspberry Pi. With the small computer booted (perhaps with a keyboard and mouse attached) and connected to your local network, open **Terminal** and update Raspbian:

```
sudo apt update
apt upgrade sudo
```

Enter these commands in turn, and follow any prompts displayed. When completed, your Raspbian system will be updated. After completion, restart Pi with the command:

```
sudo reboot
```

When the computer restarts, start a new terminal session. This time, the **xrdp** installation with the command:

```
sudo apt install xrdp
```

Again, follow the prompt that appears on the screen until the software is installed.

Step 4: Find and install a remote desktop control application

Some remote desktop control tools are available for Linux distributions. They can handle one or more different protocols and are used to remotely control another machine.

However, the best option for Raspberry Pi is probably Remmina, which supports RDP, VNC, SPICE, NX, XDMCP, SSH and EXEC.

To install Remmina, go back to the terminal window and enter:

```
sudo apt install remmina
```

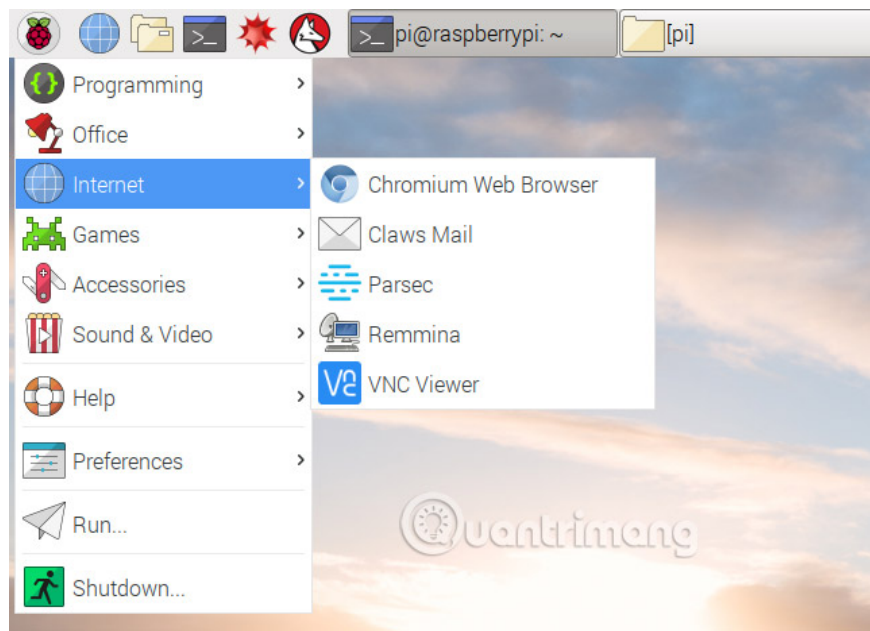
Follow the prompts that appear and wait for the installation process to complete. You can learn more about Remmina at remmina.org.

Step 5: Connect to your PC with Remmina

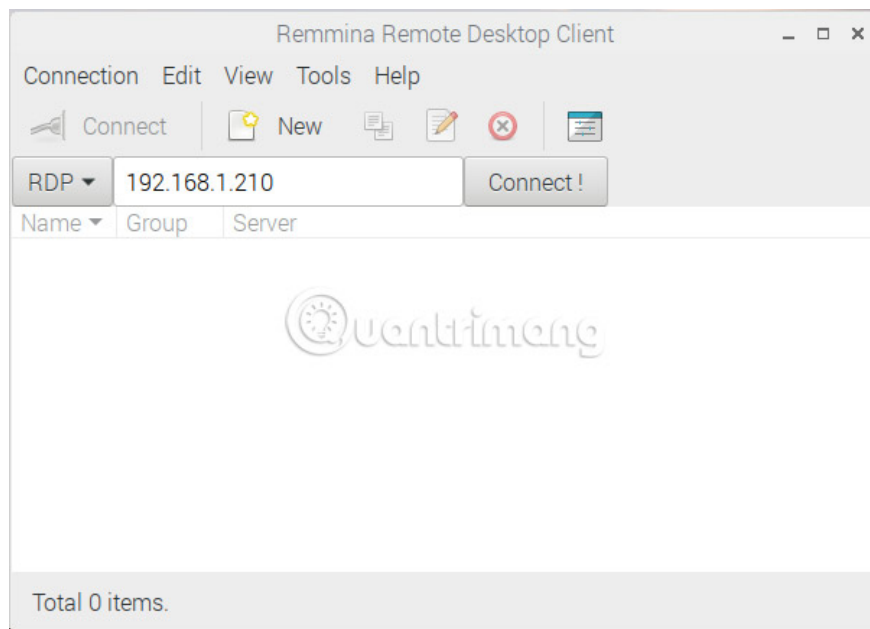
You're ready to start remote access to your Windows computer using your Raspberry Pi. To do this, open Remmina via the unique terminal command:

```
remmina
```

You can even launch it from the Internet menu.



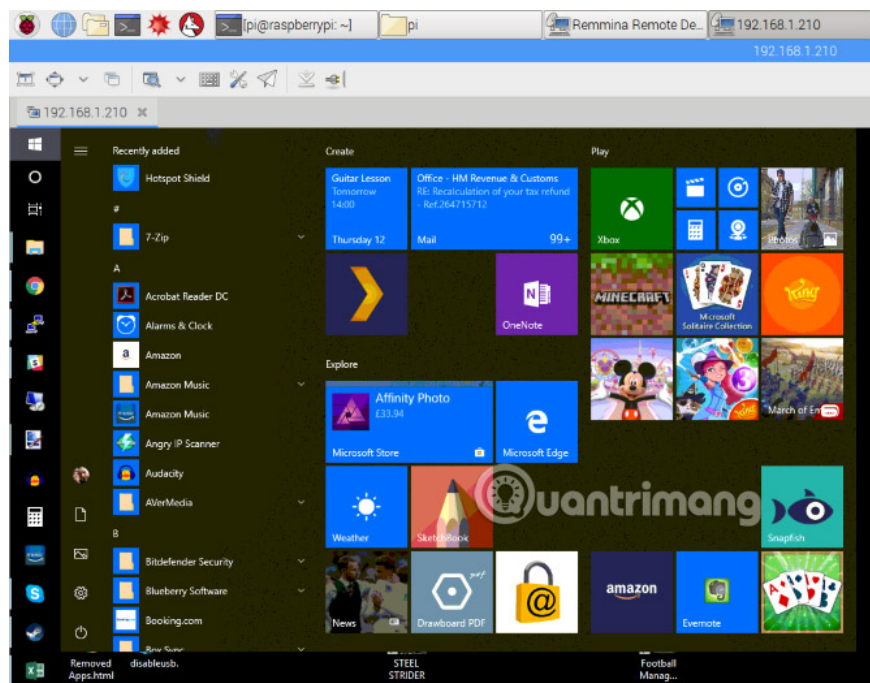
A new window will appear, so find the space to enter the IP address, making sure that RDP is selected as the protocol.



When you are ready, click **Connect** and wait for the connection to be established. After a few minutes, you will access your Windows desktop from within Raspbian (or whatever Raspberry Pi operating system you have chosen).

Twinking connections (including quality adjustments) can be done through the **Edit > Preferences** window.

Remotely control a Windows computer with Raspberry Pi



With your Windows 10 computer, now accessible from Raspberry Pi, options are also available. You can check your email or access the remote PowerShell command line. You may need to access game settings, if you are managing a game server on your Raspberry Pi.

Basically, any task that requires your presence in two places, can be completed. However, you probably shouldn't try playing video games on a PC via the Raspberry Pi in this way. Frame rate will tell you why you should not do this. (If you want to do that, try playing it directly from the PC to the TV via the Raspberry Pi).

Good luck!

See more:

1. 5 great apps that make your Raspberry Pi really useful
2. 7 great ideas using Raspberry Pi as a server
3. 20 great applications from micro-Raspberry Pi computers

You finished reading the article "**How to connect Raspberry Pi remotely to a Windows computer**" edited by the [TipsMake](#) team. We hope this article has provided you with many useful tech tips and tricks. You can search for similar articles on tips and guides. Thank you for reading and for following us regularly.