

How to Connect Printer to Computer, Macbook Extremely Easy at Home

If you do not know how to connect a printer to a computer or Macbook, please see the article below for the most detailed instructions.

When you first buy a printer, you need to connect it to a computer to be able to transfer files and perform printing functions. If you do not know how to connect the printer to a computer or Macbook, please refer to the following article of TipsMake. We'll give you a guide on the best connection steps so you can do it yourself at home.

I. How to connect the printer to the computer via Wifi

Currently, new printer models will have a Wifi connection feature. Here's how to connect a printer to a computer with wireless printers.

1. Printer Setup Guide

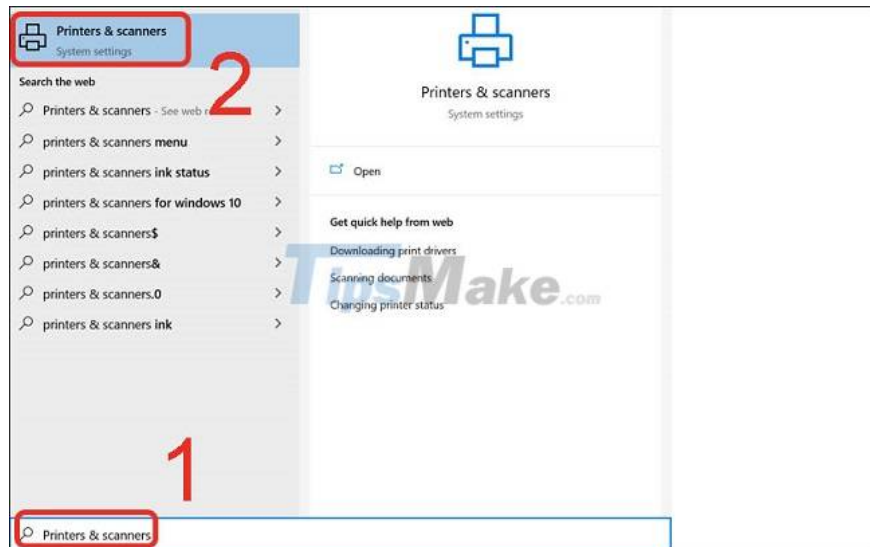
Before making the connection, you need to set up the printer by following these steps:

1. Check the machine's network connection. Then, place both the printer and the computer in a networkable location.
2. Press the power button to turn on the printer and set up the printer's network according to the instructions in the supplied book.

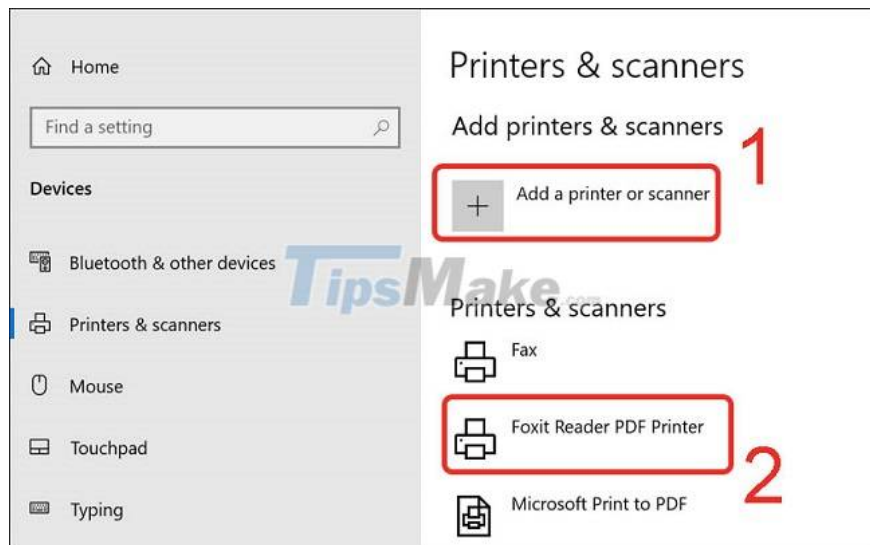
2. How to connect the printer to the computer Windows 8,10,11

Next, you start connecting the printer to the computer. Here is how to connect for Win 8,10,11 lines.

1. Go to the printer screen to connect to Wifi, enter the correct Wifi name and password. It should be noted that the printer and computer must both be connected to the same Wifi network. If connecting via Bluetooth, tap the B icon above or next to the printer.
2. In the search bar, type Printers & scanners and select Printers & scanners.



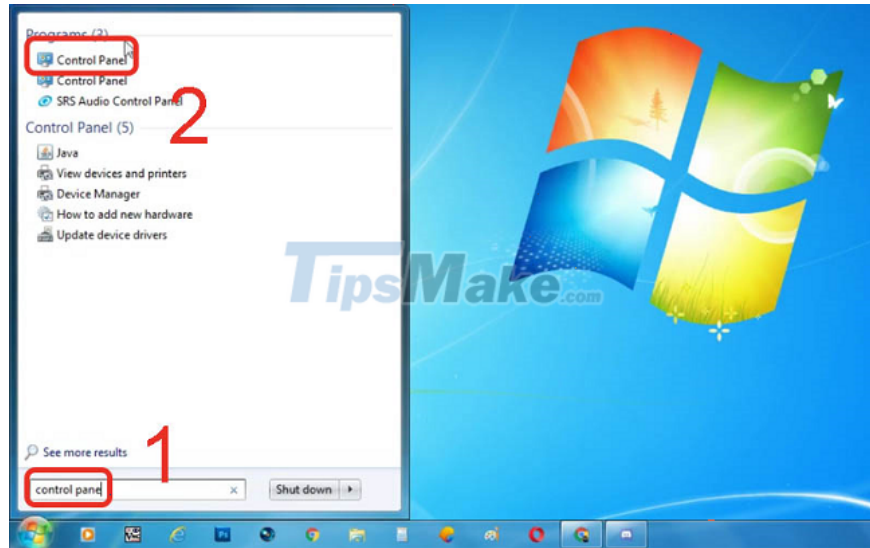
1. Then select Add a printer or scanner and choose the name of your printer.



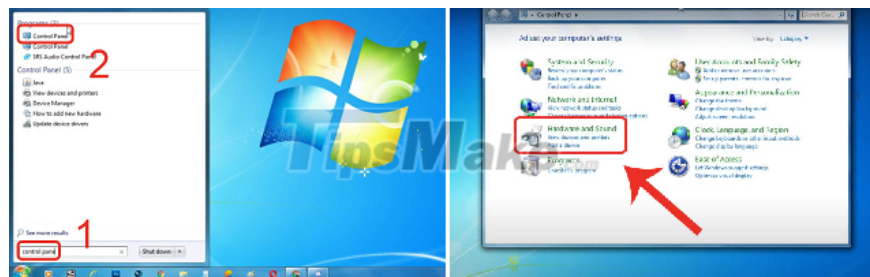
3. How to connect a printer to a Windows 7 computer

With Windows 7 computer models, you can use the following way to connect the printer to the computer:

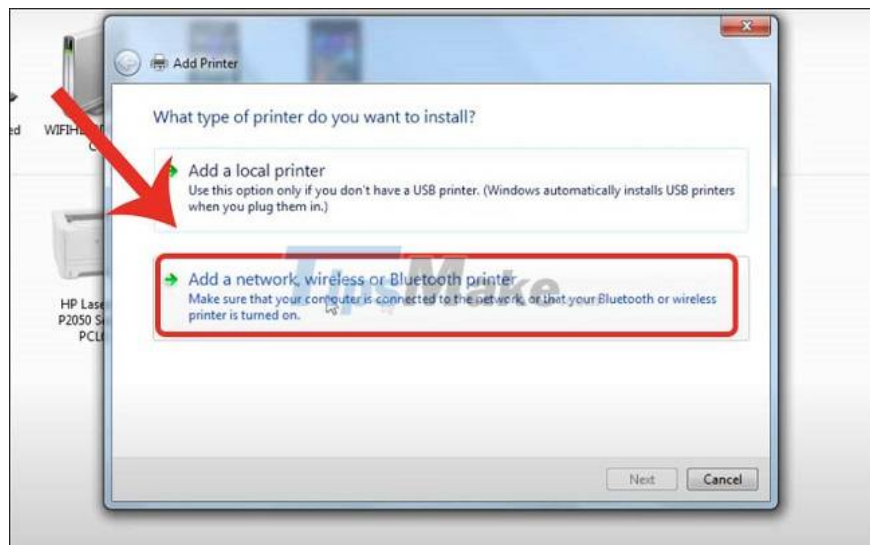
1. Connect the printer, computer to the same Wifi network. In the search bar, click Control Panel and select Control Panel.



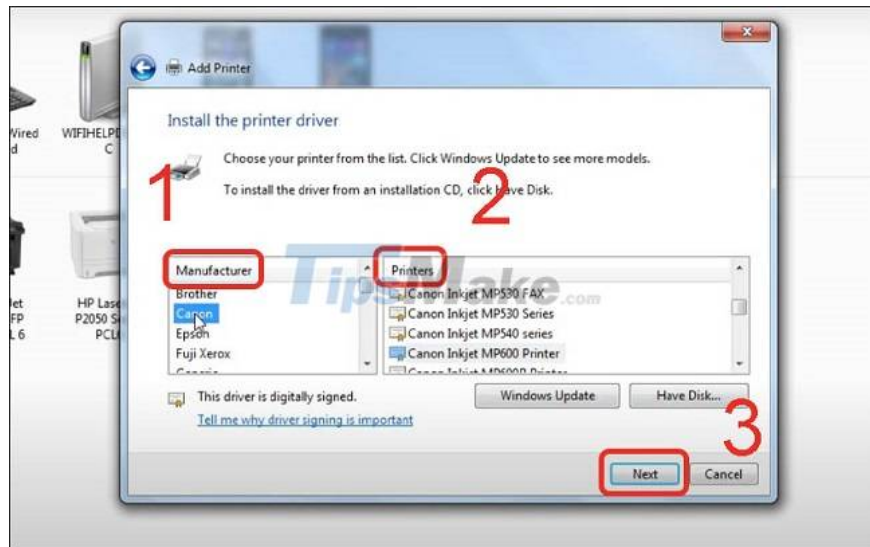
1. Next, select Hardware and Sound and click Devices and Printers.



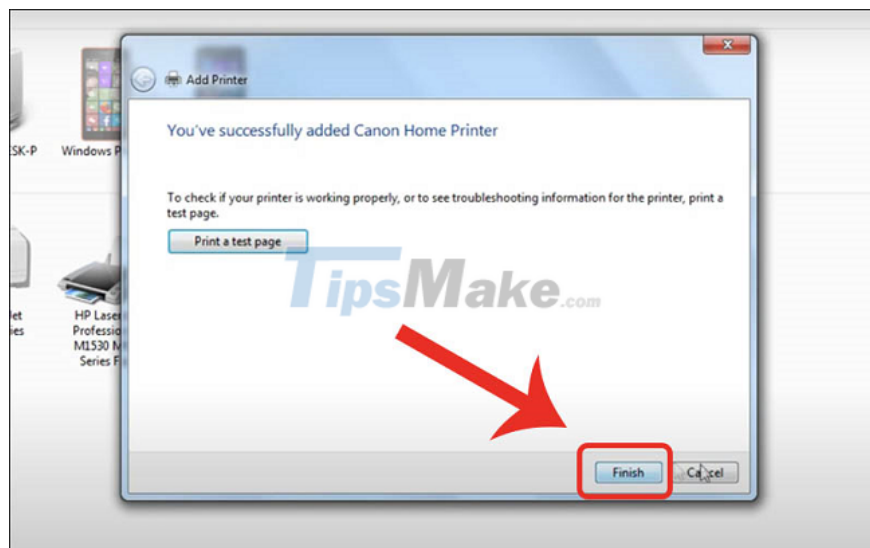
1. Next, select Add a printer. If connecting using Bluetooth, click Add a network, wireless or Bluetooth printer.



1. Select the connection port and click Next. Then, select the printer brand name in Manufacture, in the Printer section select the printer name and press Next.



1. To make it easier to distinguish for later use, give the printer a name and press Next. If you do not want to share the printer, click Do not share this printer and select Next. Finally, press the Finish command to finish.



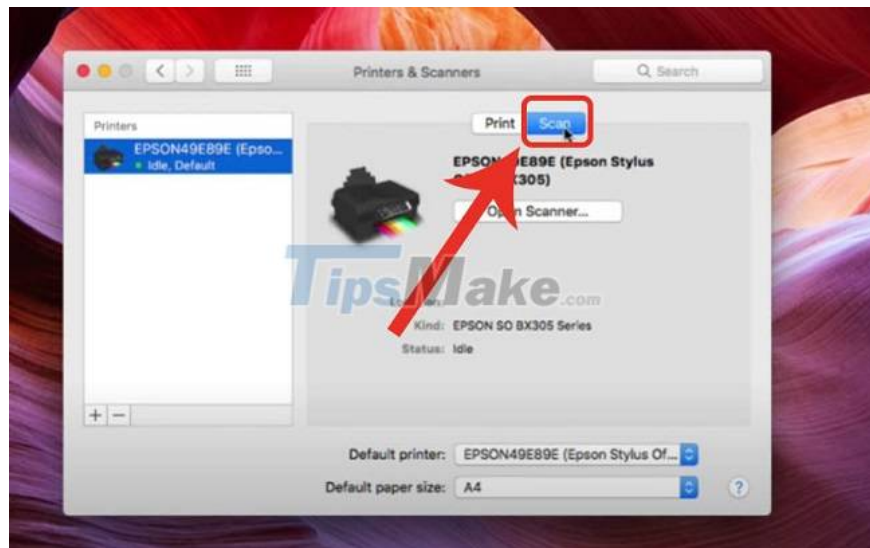
4. How to connect a printer to a Macbook via Wifi

With Macbook models, you can proceed to connect through the following steps:

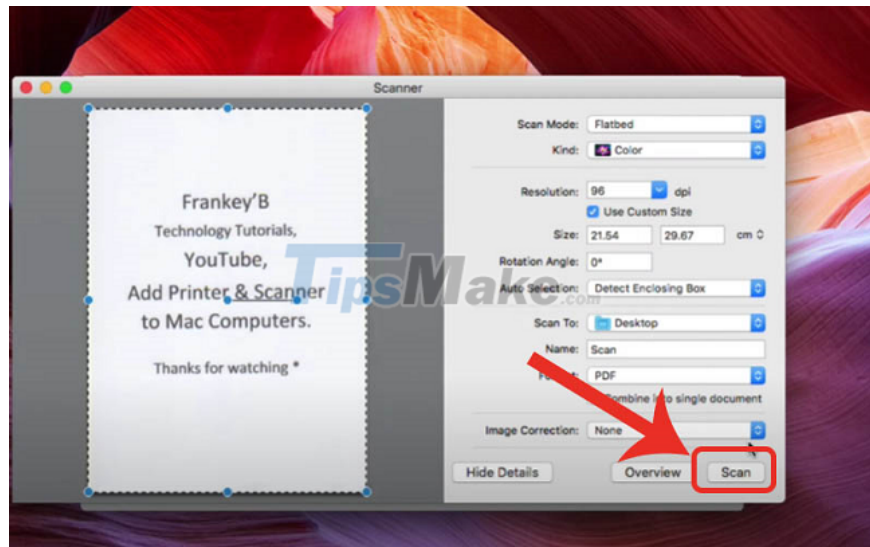
1. Click the Apple icon and select System Preferences. Then, click Printers & Scanners.



1. In the Printers section, select the name of the printer you want to connect to. Then, tick Share this printer on the network.



1. Select the Scan item, adjust the printing parameters, then click Scan.



II. How to connect the printer to the computer via the network cable

For models that are not connected to wifi, the following way to connect the printer to the computer can be applied:

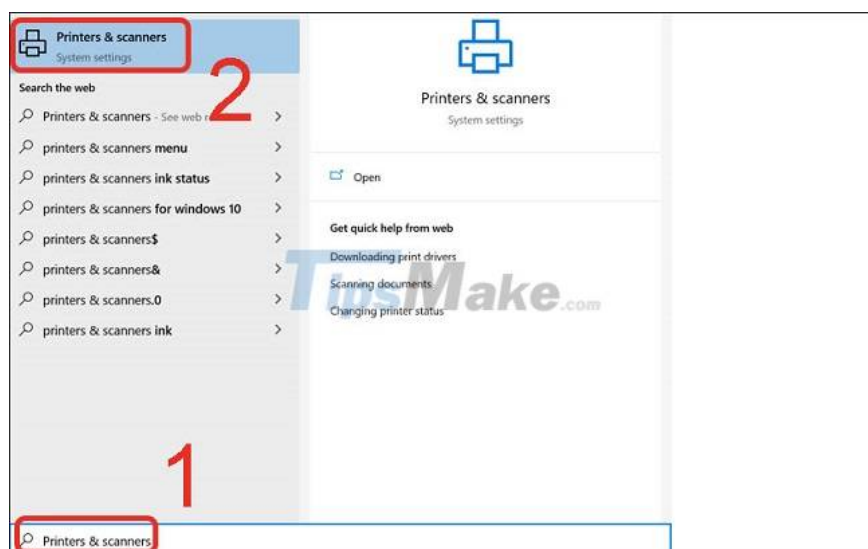
1. How to set up the printer

With a wireless printer, you need to place it near the computer to make sure it matches the length of the connection cable. Turn on the printer and connect the cable to the computer and printer. Just like that, the computer and the printer were automatically set up together.

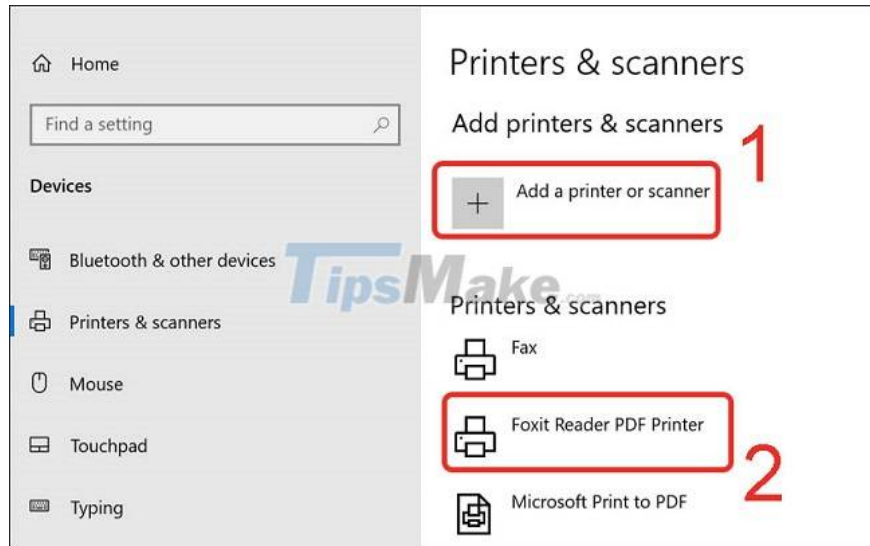
2. How to connect the printer to a Windows computer via a cable

In how to connect the printer to a Windows computer via cable, you will perform the following steps:

1. Use USB to connect the printer to the computer.
2. In the search bar, type Printers & scanners and select Printers & scanners.



1. Select Add a printer or scanner and click on the printer name.



3. How to Connect a Wired Printer to a Macbook

With Macbook, you can proceed to connect a wired printer by following these steps:

1. Press the power button to start the printer working.



1. Use a USB cable to connect the printer to the computer.



1. Finally, click Scan or confirm to connect.

Above, TipsMake has detailed instructions on how to connect the printer to a computer, macbook for both Wifi-connected models and using cables. You can refer to it to apply it to your family's line of machines!

You finished reading the article "**How to Connect Printer to Computer, Macbook Extremely Easy at Home**" edited by the [TipsMake](#) team. We hope this article has provided you with many useful tech tips and tricks. You can search for similar articles on tips and guides. Thank you for reading and for following us regularly.