

How to connect printer 2.0 USB port to USB 3.0 port on Windows 10

The following article will guide you how to connect the USB 2.0 port of the printer to the USB 3.0 port on your computer. If you are having a similar problem, try it now!

If you bought a computer in the last 5 years, at least you will have a USB 3.0 port on the system. If your computer is newer, maybe your computer has all USB ports, it is 3.0 or most of them are 3.0. This is faster because USB 3.0 is a new standard technology that is gradually becoming popular. You want your laptop to have USB 3.0 ports to work with other devices in the future. The only problem is that you cannot dispose of USB 2.0 devices, such as printers. If you have an old printer still using USB 2.0 port, connecting the printer using USB 2.0 to a USB 3.0 port on Windows does not always work well. However, the good news is that you don't need to throw the printer away, you still have a way to continue using it.

1. Differentiate USB 2.0 and USB 3.0
2. Want to know if your computer supports USB 3.0, read this article

There are two methods to help you connect the printer's USB 2.0 port to a USB 3.0 port on Windows. Assuming you don't have a USB 2.0 port to connect to the system, check the USB ports on your device to make sure you have no alternatives. If all of them are USB 3.0 ports, read the article below.

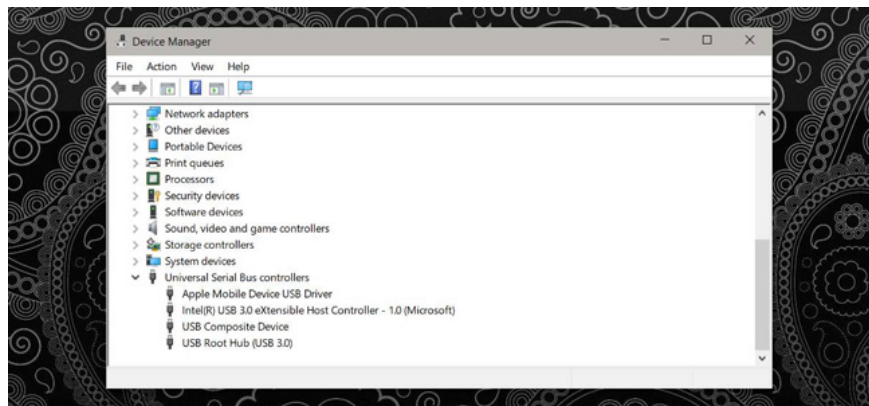


Composite port (AV port)

Maybe you only have USB 3.0 port on your laptop or one of them is Composite port. Composite USB port is a port that supports multiple devices. This is usually the charging port on the system. If you are not sure you have

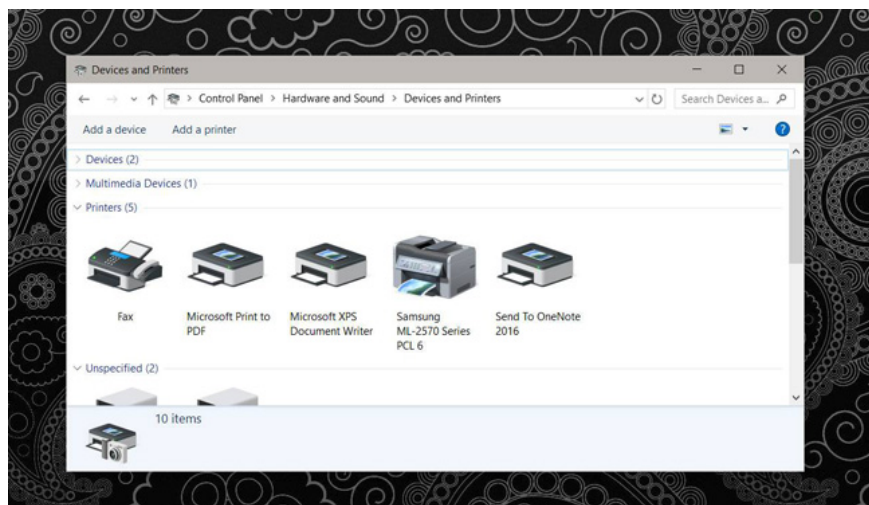
Composite port, try connecting the printer to this port. Usually it will work. Windows will detect and install the correct driver for it.

Also, open **Device Manager** and expand the **Universal Serial Bus Controllers** device . Below this device, you will see a device called **USB Composite Device** . Your task is to find the port mentioned and try starting with the charging port.



Install printer driver

If you do not have a Composite port that supports the printer, or your printer is found but cannot print, you need to install the drivers. If you have a driver installation disc, you can use it, otherwise use another method.



You need to find the disc or download the driver online. This will be very complicated. Drivers may not be available from the manufacturer and you must download them from an archive. Make sure this repository is reliable. Install the printer driver and try printing again.

This is a must, I tried and when connecting the Samsung ML-2571N printer with Composite port, it worked. Installing the driver is not difficult, so I think you should try. Also, if you are choosing to buy a laptop, check the USB ports on the computer you want to buy. All users want to switch to USB 3.0 but we can't buy all new hardware just to use it.

Above is how to connect the USB 2.0 port of the printer to the USB 3.0 port on the computer. If you are having a similar problem, try it now!

You finished reading the article "**How to connect printer 2.0 USB port to USB 3.0 port on Windows 10**" edited by the [TipsMake](#) team. We hope this article has provided you with many useful tech tips and tricks. You can search for similar articles on tips and guides. Thank you for reading and for following us regularly.
