

How to Connect PC to TV Without Wires

Today's TipsMake will show you how to connect your Windows PC to your TV without cables. If you have a Smart TV with built-in Chromecast or Miracast (most modern TVs, but not from Apple), you can usually mirror the content of your PC screen to the TV. If your TV doesn't support Chromecast or Miracast but has the ability to connect to a Wi-Fi network, you can use a streaming device like a Roku or a standalone Chromecast to establish a connection between your TV and PC.

Use Chromecast



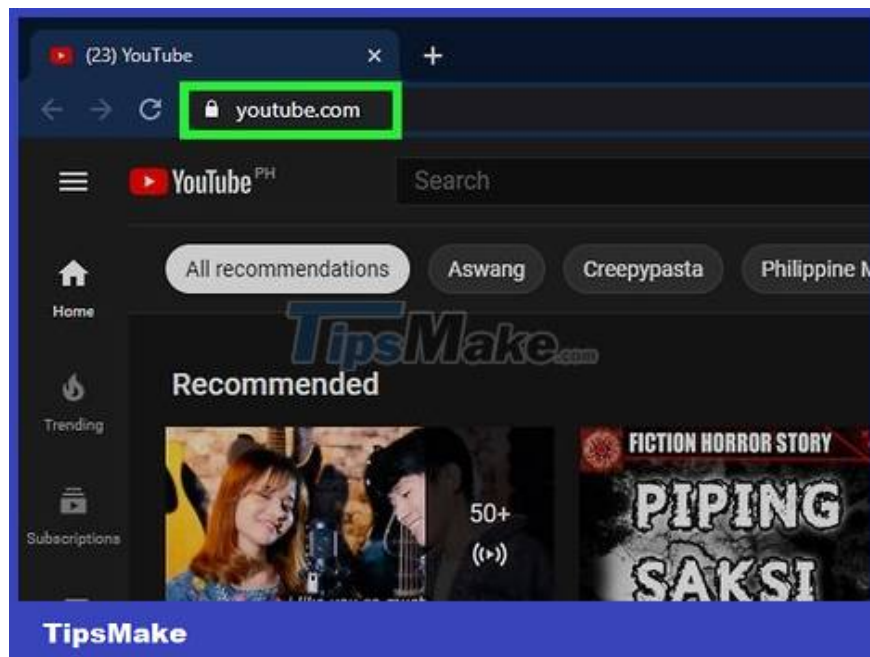
Turn on your Chromecast-enabled TV. If you use an Android TV powered by Chromecast or connected to a Chromecast device, you'll be able to mirror any Windows app that supports Chromecast to the screen. There are many Windows applications that support Chromecast such as Google Chrome, Netflix, Spotify and Plex.

With Google Chrome web browser, you can use it to mirror any website to your TV. These websites include YouTube, Netflix and Facebook. Google Chrome also allows you to mirror your entire Windows PC screen.



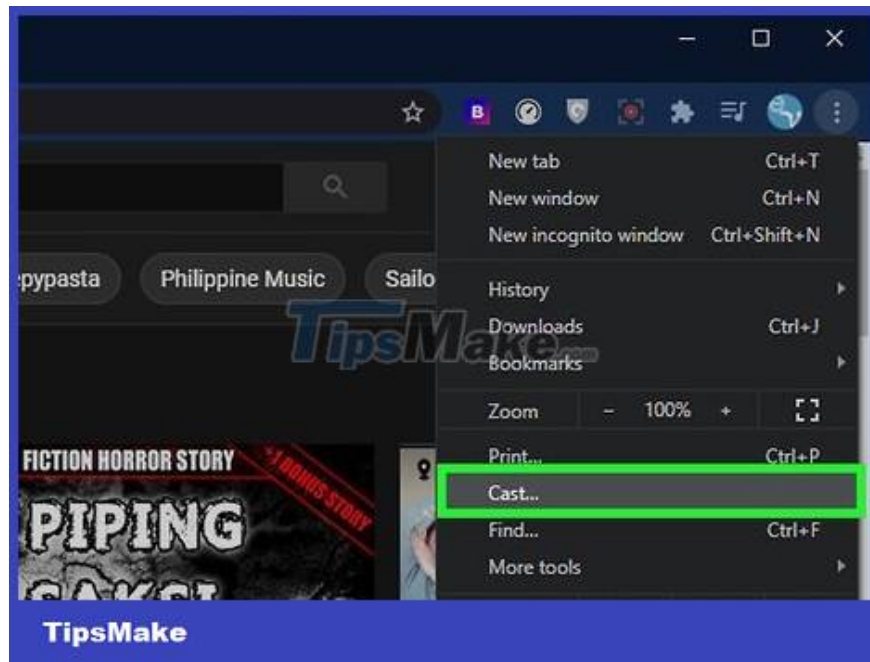
TipsMake

Connect your PC to the same Wi-Fi network as your TV. The TV and PC must be connected to the same network to use Chromecast.



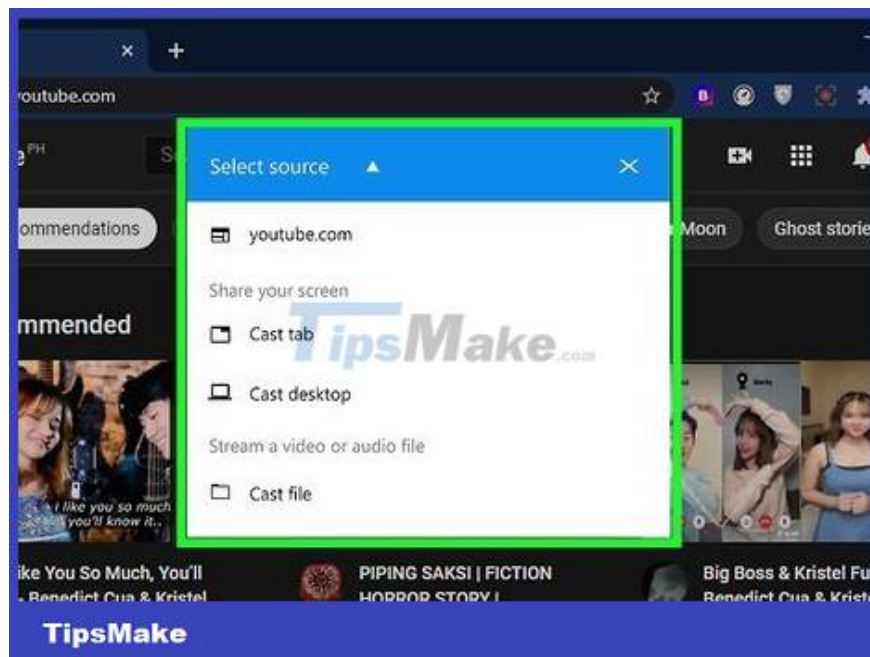
TipsMake

Open the app or website you want to cast on your TV. For example, if you want to watch YouTube on TV, you need to open the Chrome web browser and visit <https://www.youtube.com>.



Select Cast . On Google Chrome, click the three-dot menu in the upper right corner of the screen and select **Cast** . **The location of the Cast** option will vary per app, but is usually represented by a TV icon with three curved lines on the bottom left edge.

If using Netflix, start playing the show or movie you want to show, then press pause for the options buttons to appear. The Cast icon will be at the top or bottom of the screen.

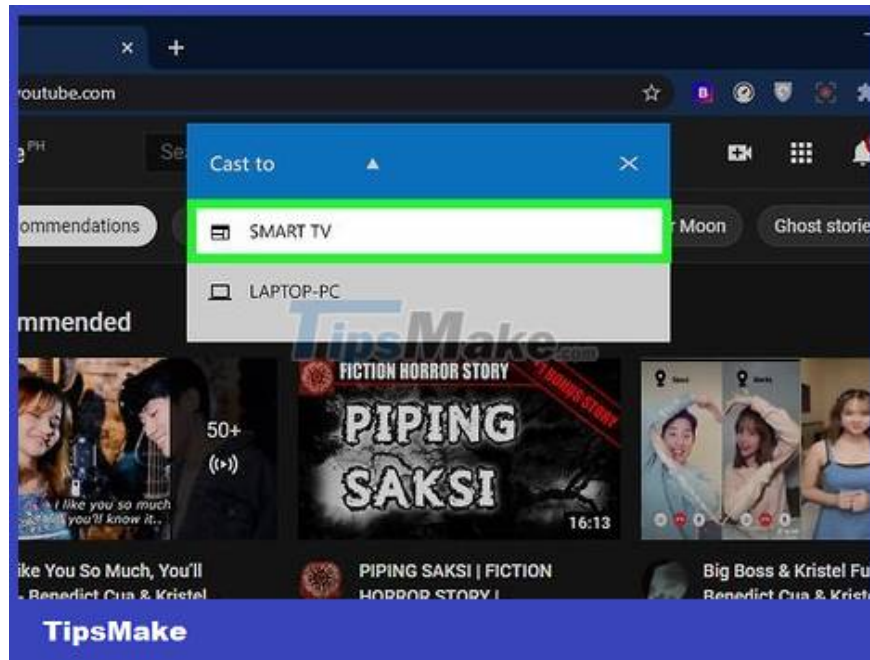


Select the content you want to stream (applies to Google Chrome only). If you use Google Chrome, you can view it in several ways:

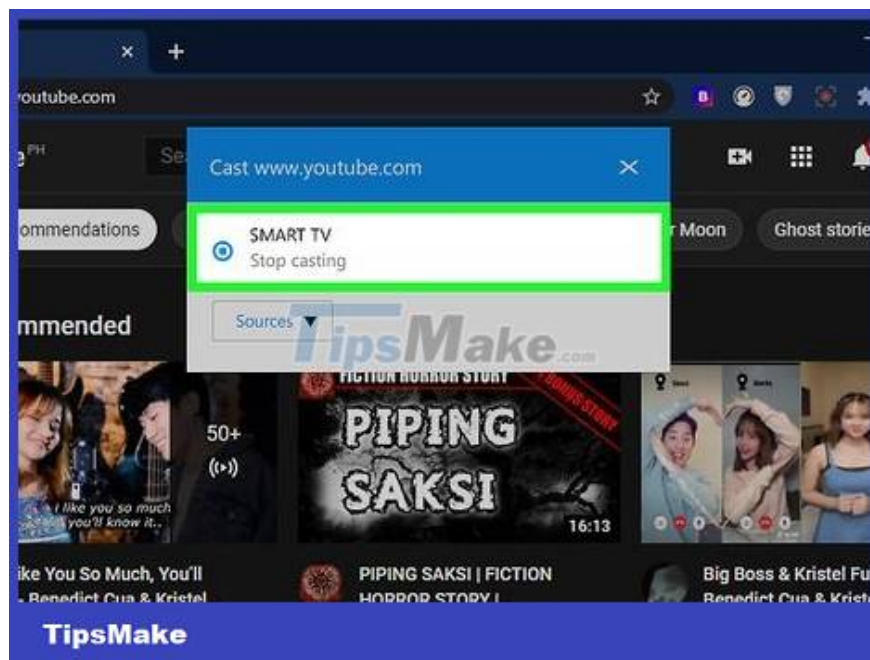
Cast current browser tab: This is the default option so see the next step.

Cast entire screen: Click the down arrow next to "Cast to" and select **Cast desktop** .

Cast music or video files: Click the down arrow next to "Cast to", select **Cast file** , and select the file you want to watch on your TV.



Click on the smart TV located in the list. Once you select, the currently open app, streaming content, file or website will be transmitted to the Smart TV.

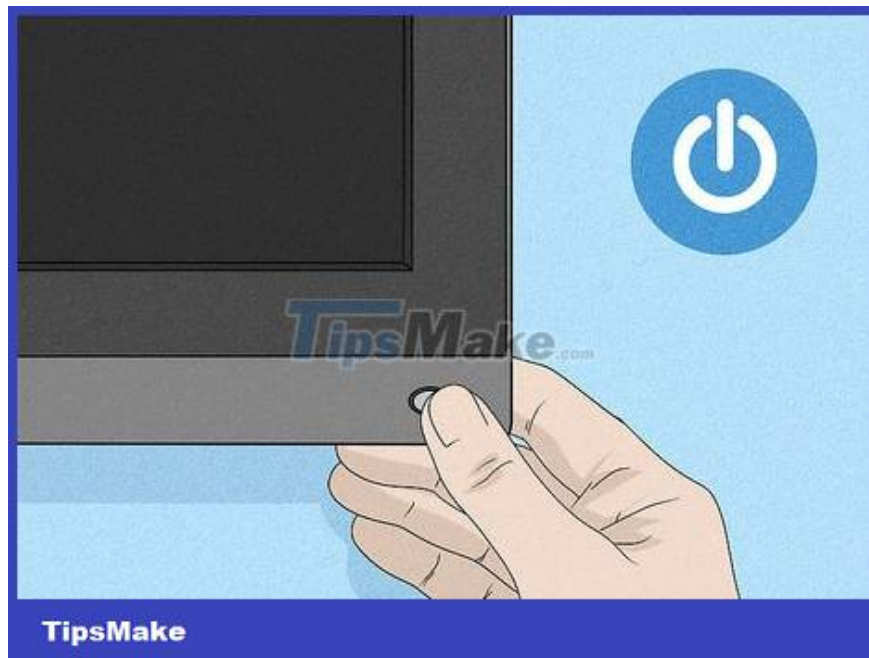


Stop showing it on TV. After you finish watching, you can disconnect your PC from the TV.

On Google Chrome: Click the three-dot menu in the upper right corner and select **Stop casting** .

On another app: Pause the content to let the buttons appear, then click the Cast icon to disconnect.

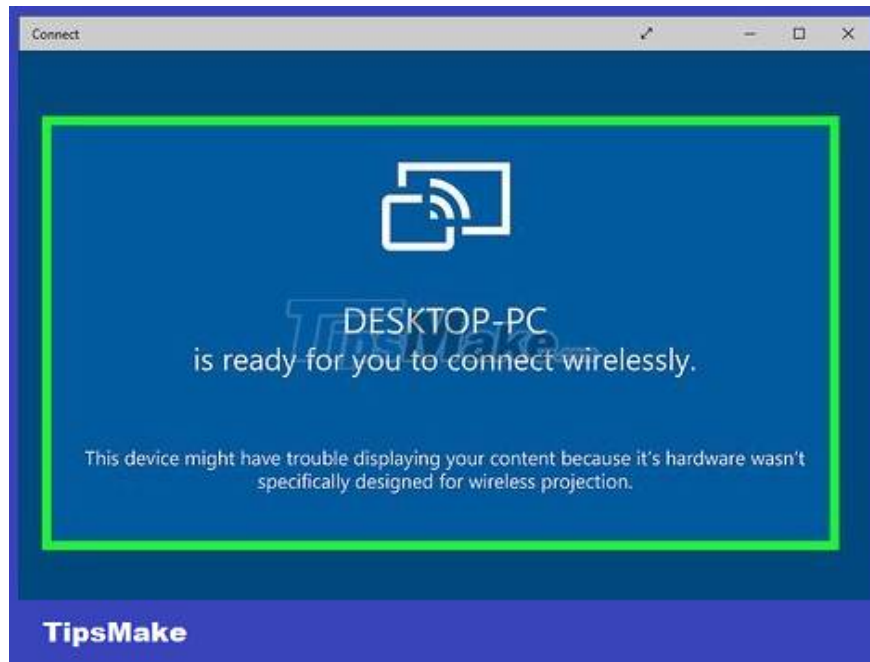
Use Miracast



Turn on your TV that supports Miracast. If your TV has Miracast (or you're using a Miracast-enabled streaming device like Roku and many Amazon Fire TVs), you can connect to the TV using a PC with Miracast built in. Depending on your TV or streaming device, you may need to turn on Miracast (this feature is also called **Screen Mirroring** or **Mirroring**).

Use this link to find a searchable list of all TVs with Miracast built-in.

Use Roku's product comparison tool to see if your Roku model supports screen mirroring (required feature with Miracast).



You need to make sure that your PC supports Miracast. Miracast is available on most Windows 8 and 10 laptops and desktops. To determine if your computer has Miracast:

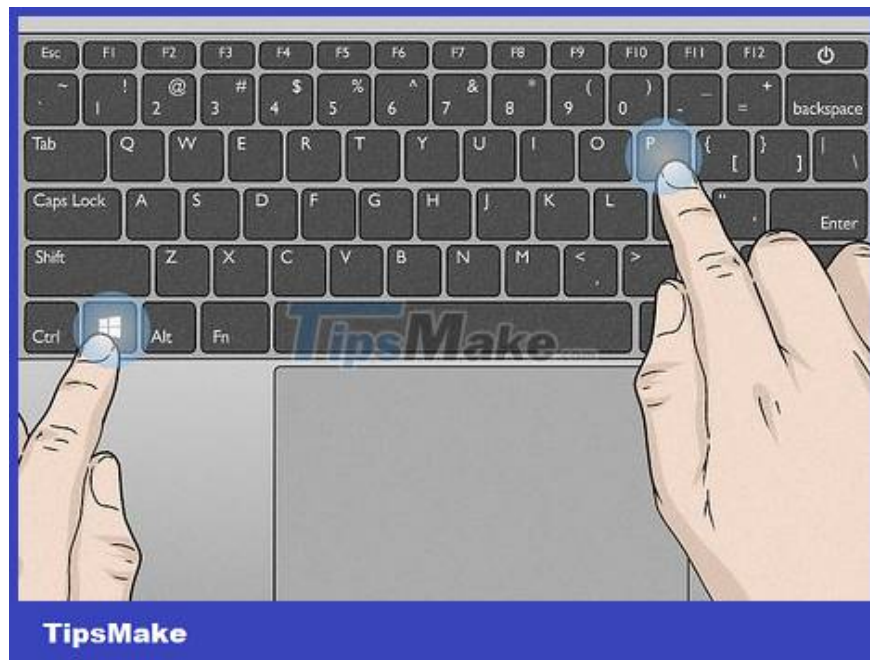
Open the Windows Search search bar and enter `connect`.

Click **Connect** in the search results.

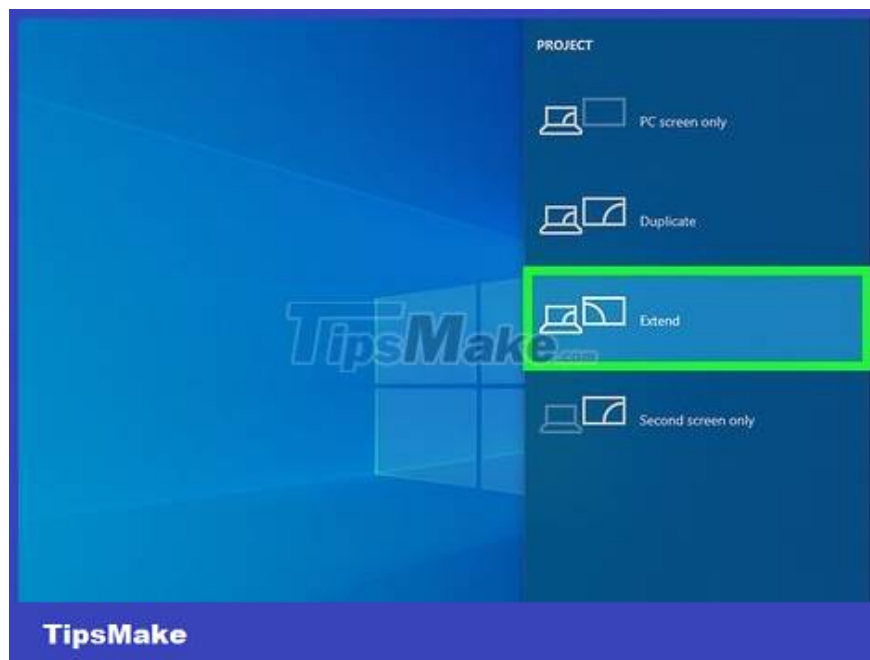
If you see a message that your computer is ready for a wireless connection, you can use Miracast. If instead it says "This device doesn't support Miracast", you need to try something else (or buy a Miracast adapter to plug into the HDMI port on your PC).



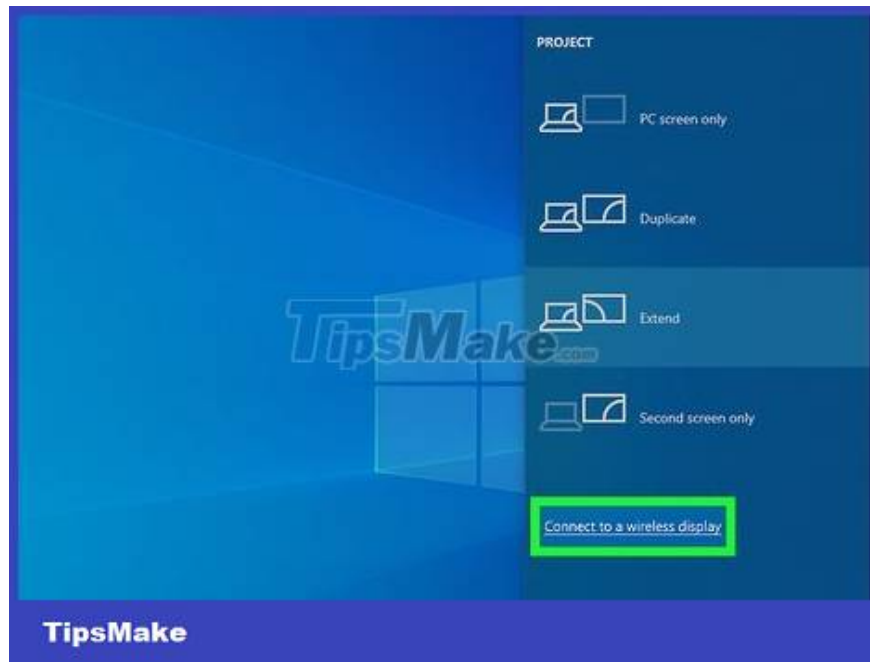
Connect your PC to the same Wi-Fi network as your TV. The TV and PC must be connected to the same network to use Miracast.



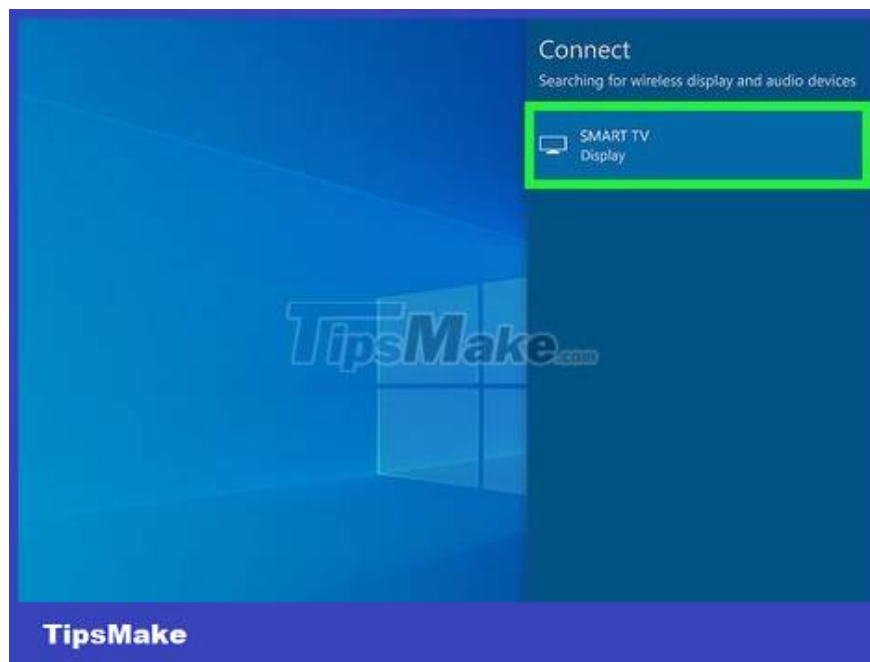
Press ? Win+P on PC. The projection menu opens.



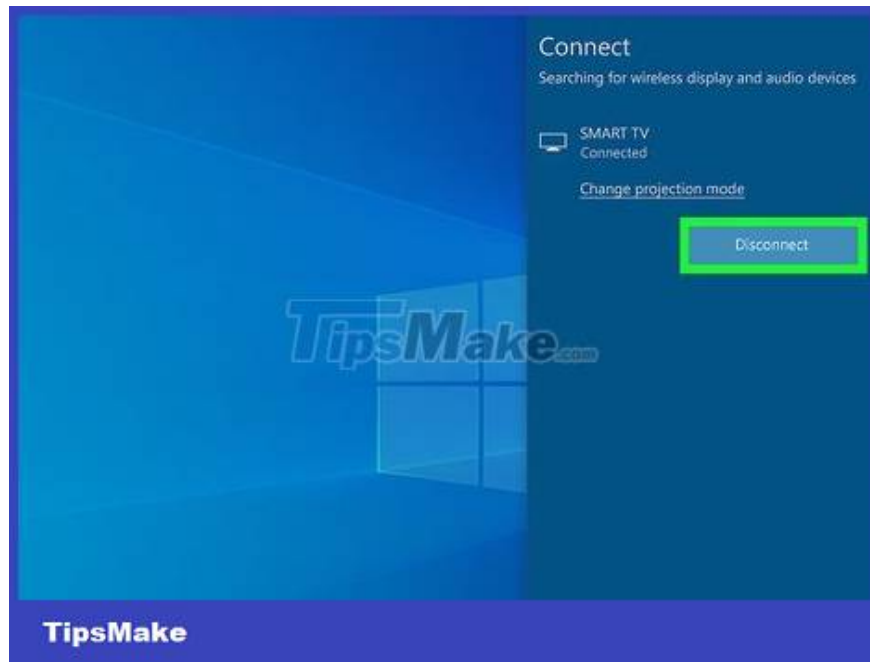
Choose projection method. If you want to view the entire PC screen on the TV and still use the TV, you can choose **Duplicate** . If you just want to use the TV as an additional display for your PC, select **Extend** . If you have multiple screens connected to your PC, you can choose to mirror certain screens.



Click Connect to a wireless display . This option is at the bottom of the list.



Click the TV or streaming device in the list. Depending on the settings, a code may appear on the TV. You will need to enter this code into your computer to pair. Once the pairing process is complete, the wireless connection will be established without any problems.



Stop transmitting through TV. After watching, you can disconnect your PC and TV by:

Click the Notification notification panel with the square chat bubble icon to the right of the clock, usually in the lower right corner of the screen. If there are active notifications, a small number will be displayed on the icon.

Click the Disconnect option next to the name of your TV or streaming device.

You finished reading the article "**How to Connect PC to TV Without Wires**" edited by the [TipsMake](#) team. We hope this article has provided you with many useful tech tips and tricks. You can search for similar articles on tips and guides. Thank you for reading and for following us regularly.