

How to Connect PC to TV with HDMI

This wikiHow teaches you how to connect your PC to a TV using an HDMI cable. Connecting your PC to your TV will enable you to display your computer screen on your TV, so you can watch movies or browse the internet on the big screen. All...

Part 1 of 2:

Connecting the PC to the TV



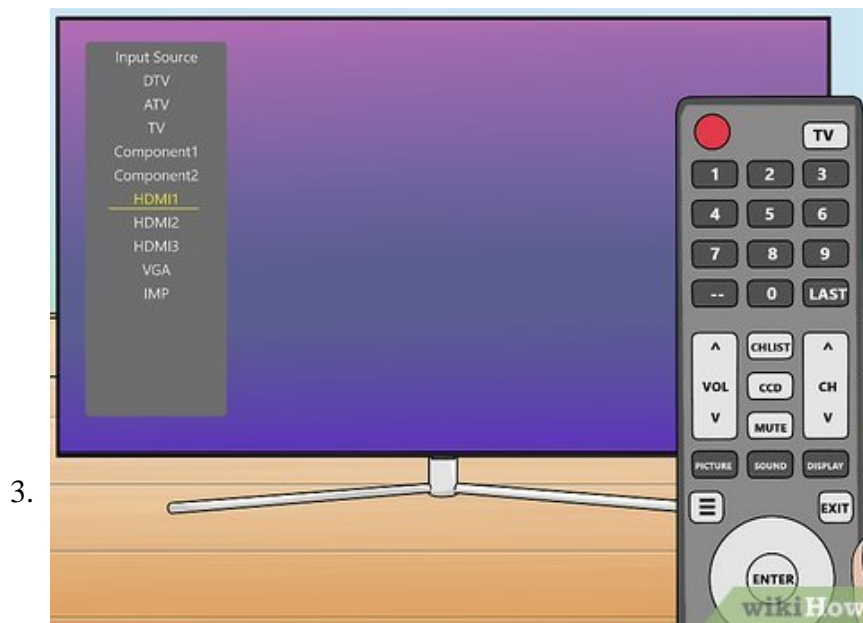
Connect one end of the HDMI cable to the PC. The HDMI slot is usually behind the CPU if you have a desktop computer, or on the side of a keyboard on a laptop.

1. Some PC's may use a regular HDMI port, while others will use an HDMI mini or MiniDisplay port.
2. For HDMI mini and MiniDisplay cables, one end of the cable should be an HDMI mini or MiniDisplay cable which you can plug into your computer, and the other end should be a regular sized HDMI cable.
3. Not all computers have an HDMI port. Some older computer may use a VGA or DVI cable. You can connect these to the HDMI port of a TV using an adapter and a separate audio cable. If you are using a laptop that does not have an HDMI or other video-out port, you can purchase a USB-to-HDMI adapter. You may need to install additional software on your PC.



Connect the other end of the cable to the TV. Find a free HDMI port on your TV and connect the other end of the cable to it. The ports are usually numbered and labeled with "HDMI".

1. Make a note of which HDMI port you are connecting to.
2. Make sure you purchase an HDMI cable that is the right length needed to connect from your PC to your TV. Measure the distance if needed.



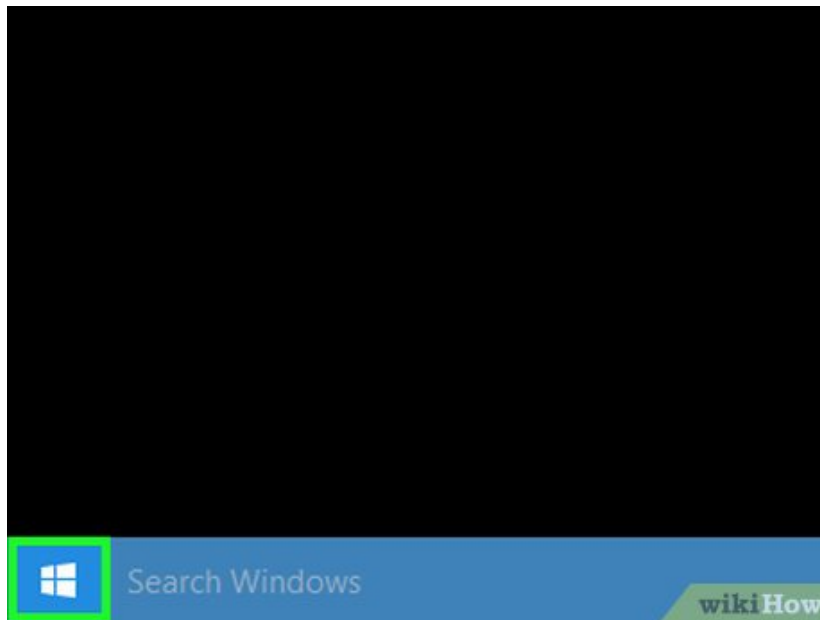
Use the TV remote to select the HDMI source on the TV. Look for a button on the TV or remote that says "Source", or "Input" or something similar. Use this button to select the HDMI port you connected your PC to.

1. After connecting the PC and TV together, sometimes the TV will automatically display what's on your computer monitor. If it is blank, use Method 2 to detect your TV in Windows 10.
2. Use the number labels on the HDMI ports to help you find which HDMI source your computer is connected to.

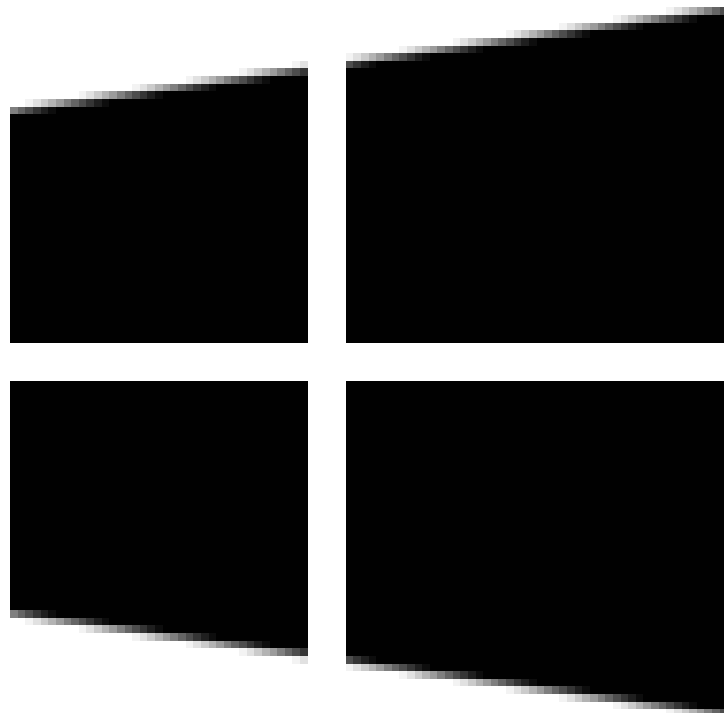
Part 2 of 2:

Detecting Your TV in Windows

1.



Click the Start

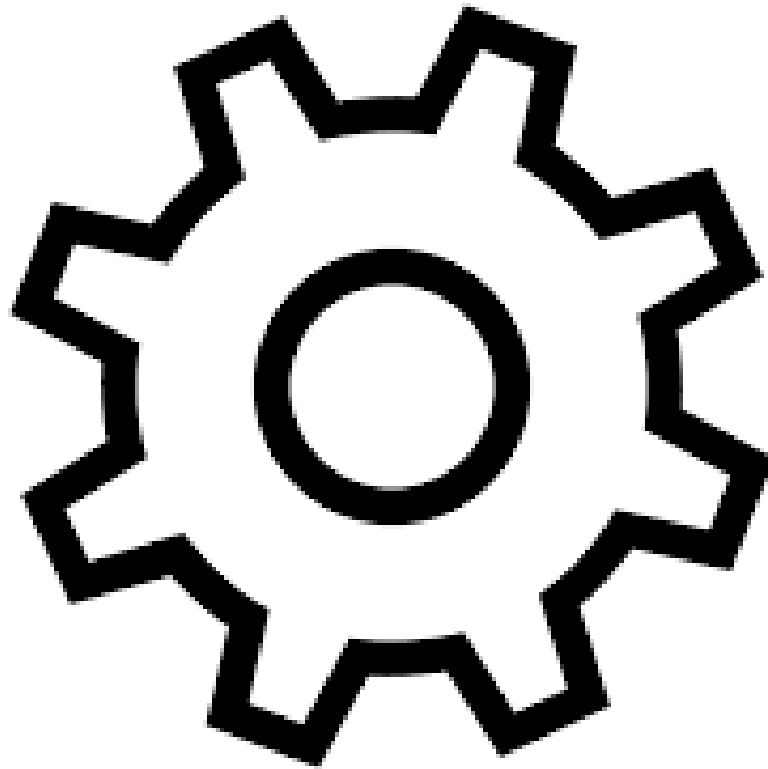


menu on your PC. This is usually found in the bottom left-hand corner of the screen. It has an icon with

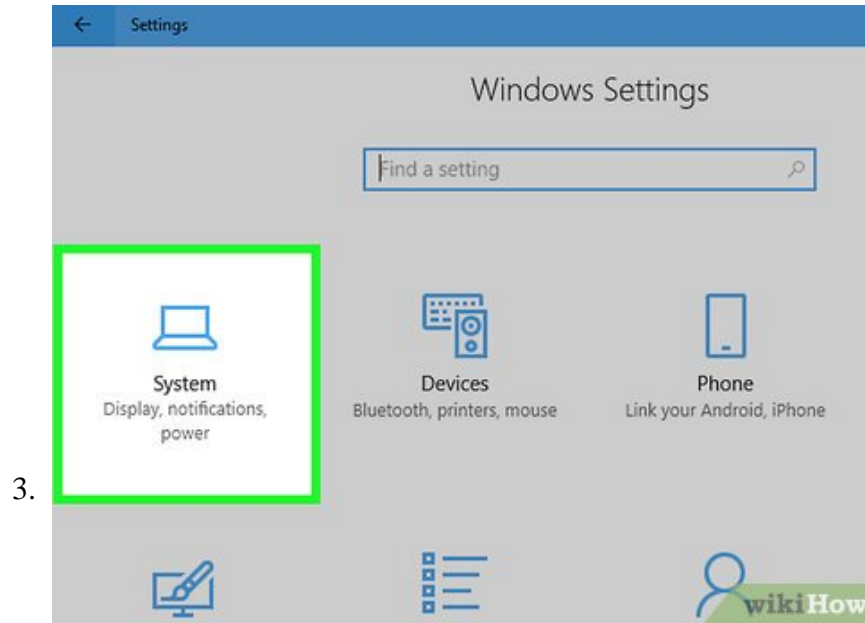
the Windows logo. This displays the Start menu.



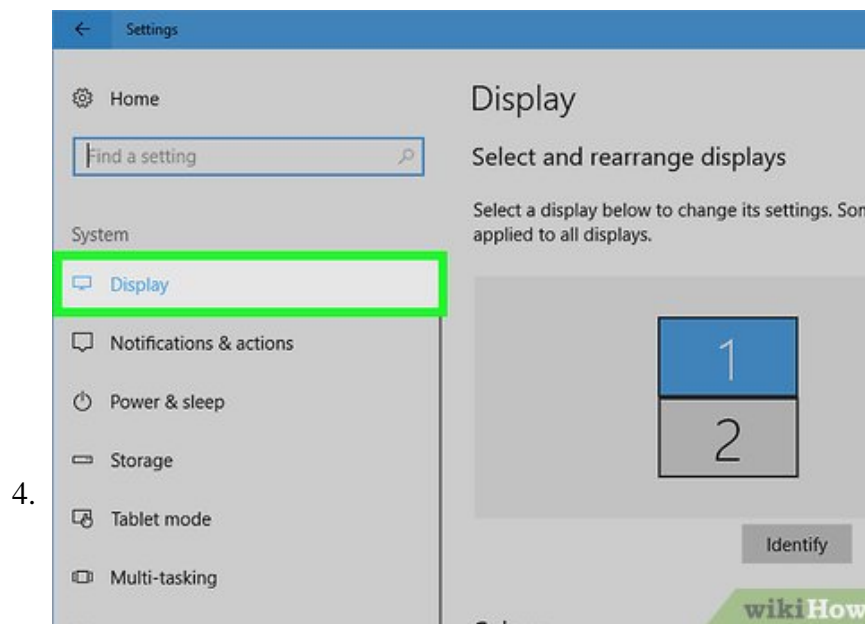
Click the Settings



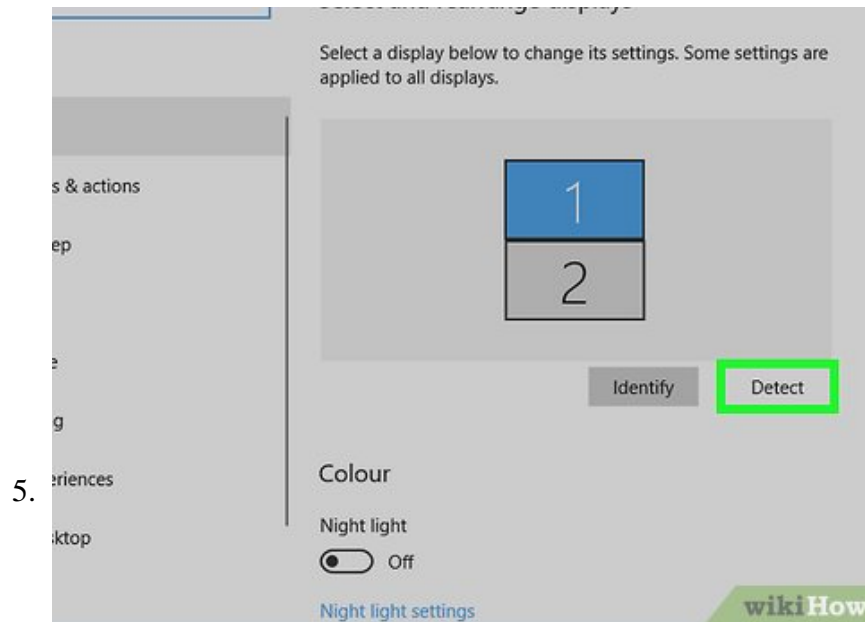
icon. It's the icon that resembles a gear. It's on the left side of the Start menu.



Click **System**. It's the first option in the Windows Settings menu. It's next to an icon that resembles a laptop computer.



Click **Display**. It's the first option in the sidebar menu to the left. This displays your Display settings.



5. **Scroll down and click** . It's at the bottom of the Display Settings menu. Windows will detect any connected displays.

1. Adjust the resolution as needed so it looks good on your TV. If you have an HDTV, select **1920 x 1080** in the "Resolution" drop-down menu. If you have a 4K TV, select up to **3840 x 2160** or highest possible resolution in the "Resolution" drop-down menu.

You finished reading the article "**How to Connect PC to TV with HDMI**" edited by the [TipsMake](#) team. We hope this article has provided you with many useful tech tips and tricks. You can search for similar articles on tips and guides. Thank you for reading and for following us regularly.